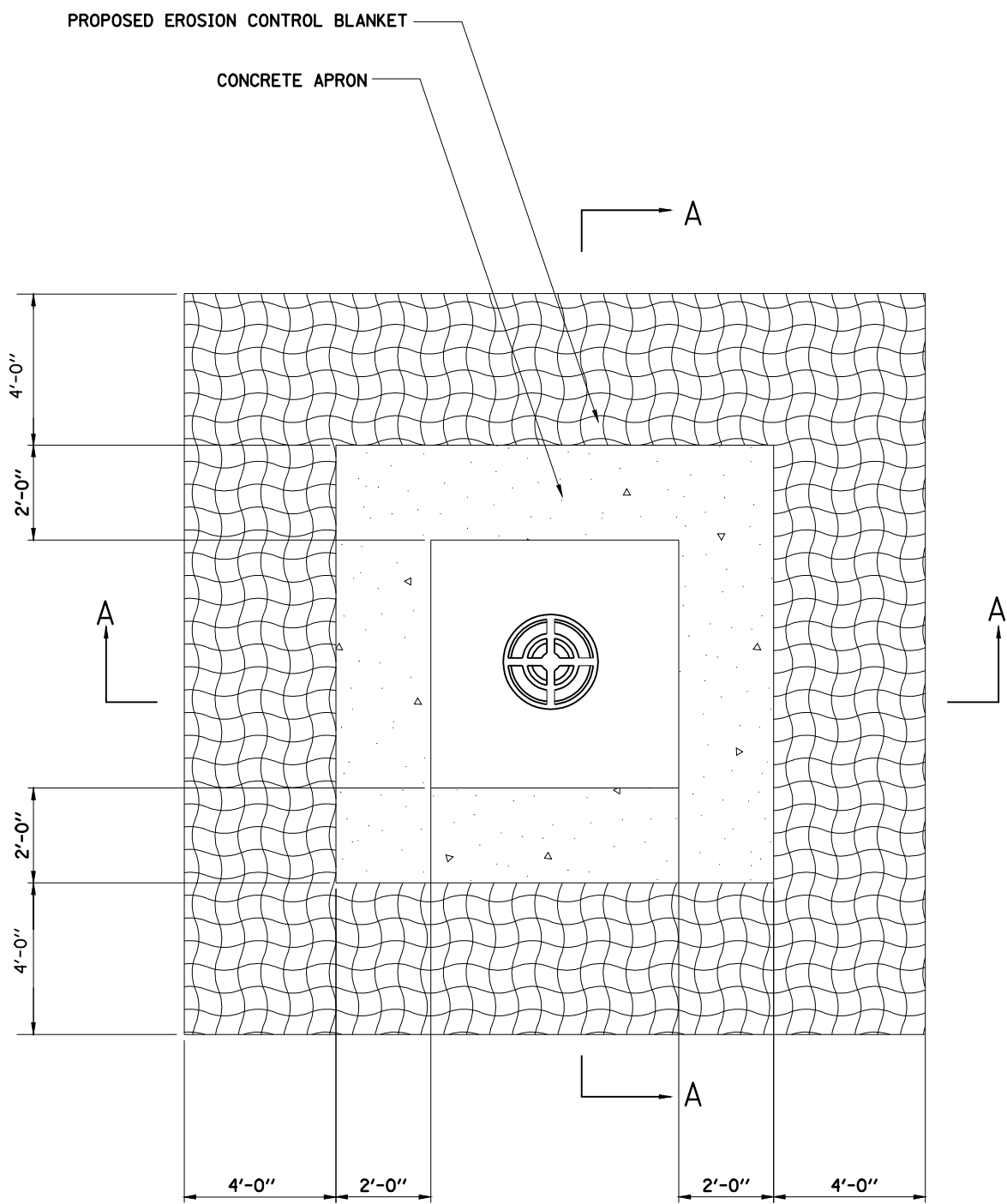
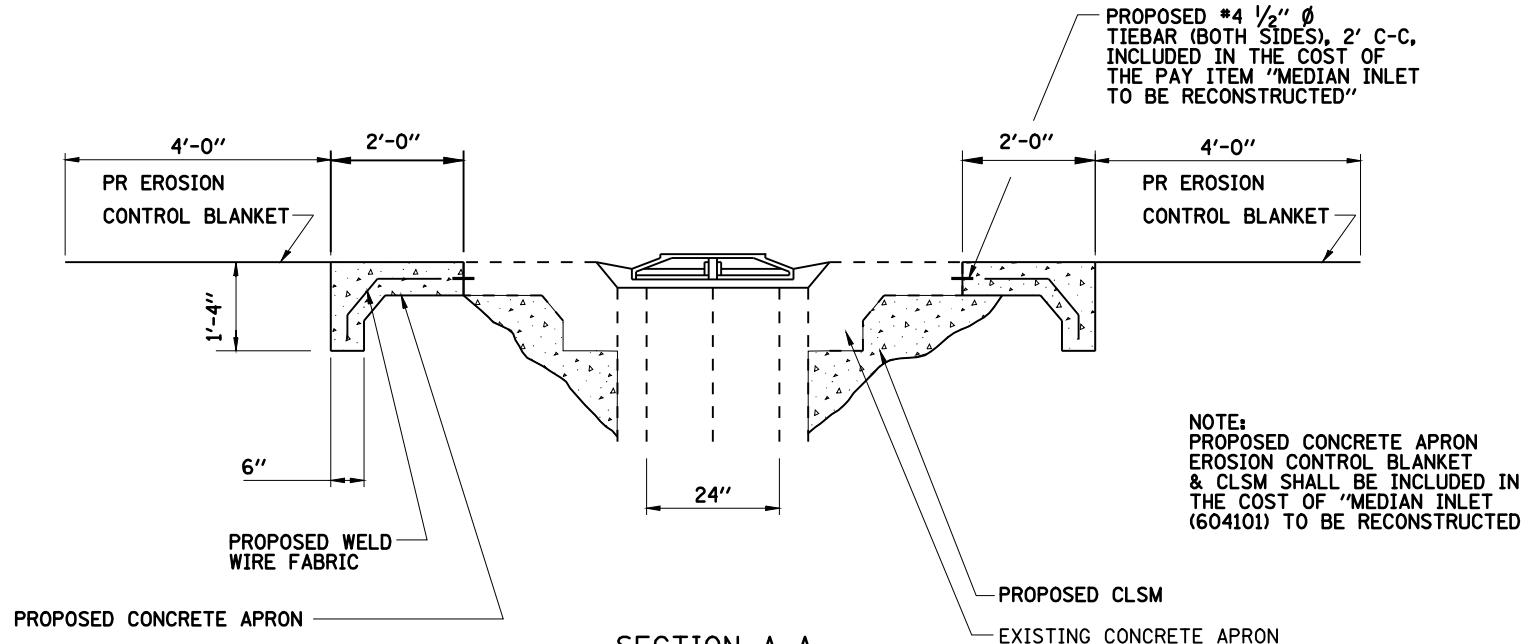


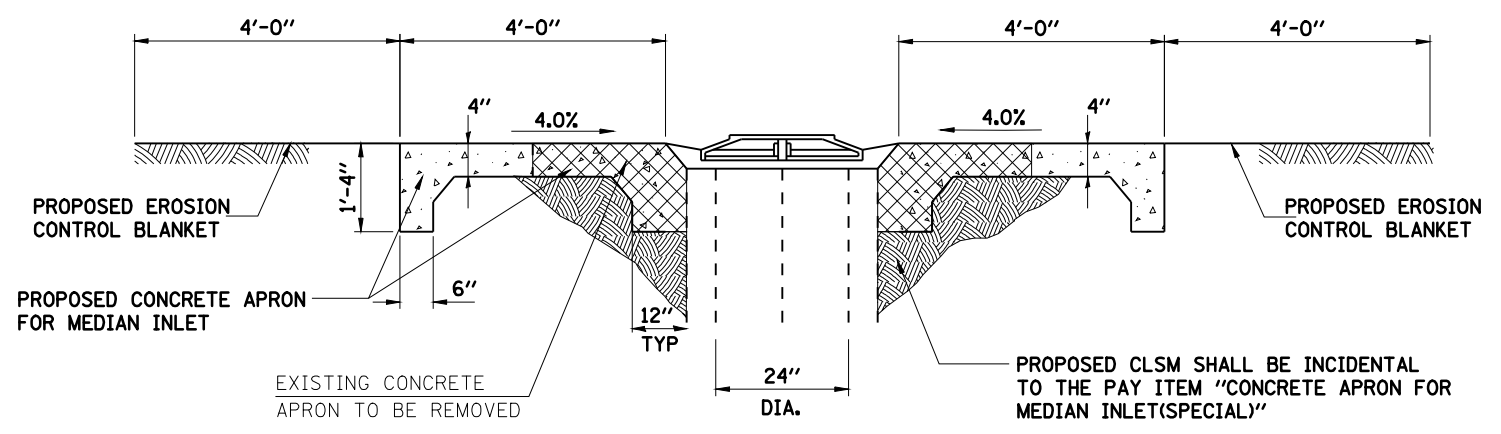
F.A.I. RTE.	SECTION	COUNTY	TOTAL SHEETS	SHEET NO.
172	•	ADAMS	108	87
STA.		TO STA.		
FED. ROAD DIST. NO.	ILLINOIS	FED. AID PROJECT		
• (1-5)RS-1; (1-6)RS				
<b>CONTRACT NO. 72694</b>				



**PLAN-CONCRETE APRON FOR MEDIAN INLET & MEDIAN INLET REPAIR**



**SECTION A-A  
MEDIAN INLET REPAIR DETAIL**



**SECTION A-A  
CONCRETE APRON FOR MEDIAN INLET DETAIL**

NOTE:  
REMOVAL OF THE EXISTING CONCRETE APRON,  
PROPOSED CLSM AND EROSION CONTROL BLANKET  
SHALL BE INCLUDED IN THE COST OF "CONCRETE  
APRON FOR MEDIAN INLET"

REVISIONS	
NAME	DATE

ILLINOIS DEPARTMENT OF TRANSPORTATION

**CONCRETE APRON &  
MEDIAN INLET REPAIR DETAIL**

SCALE: VERT. N.T.S.  
HORIZ. N.T.S.  
DATE 09/10/2004

DRAWN BY JJS  
CHECKED BY LLO