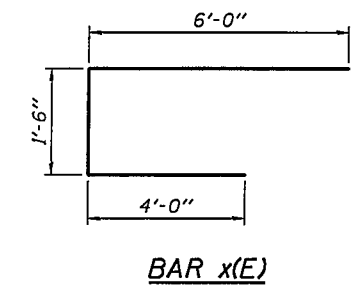
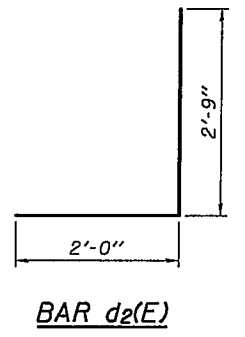
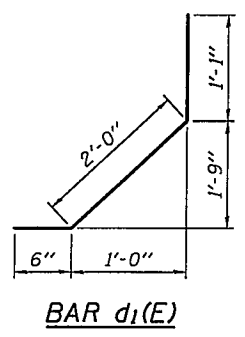
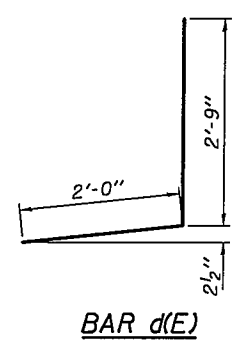
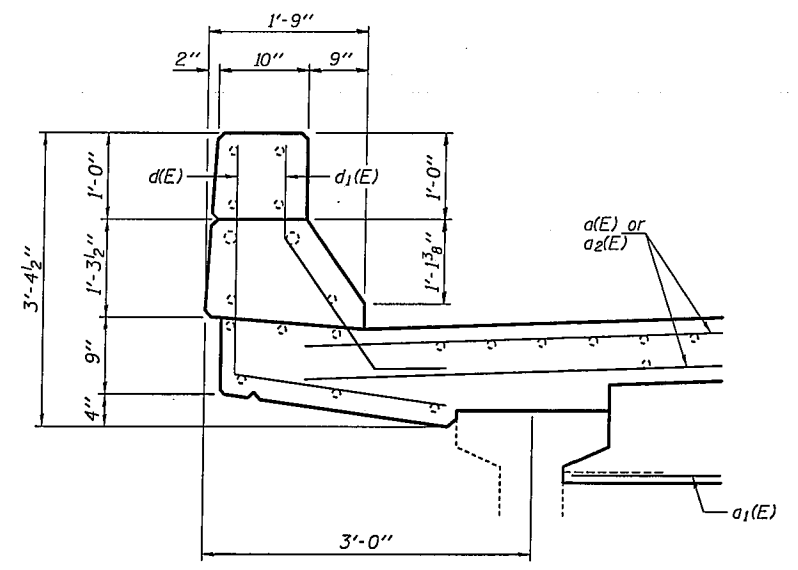
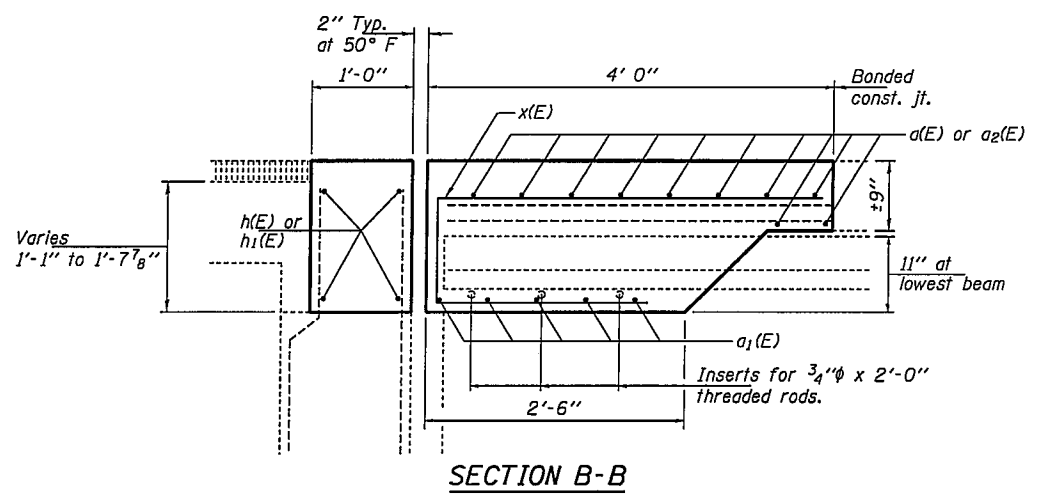
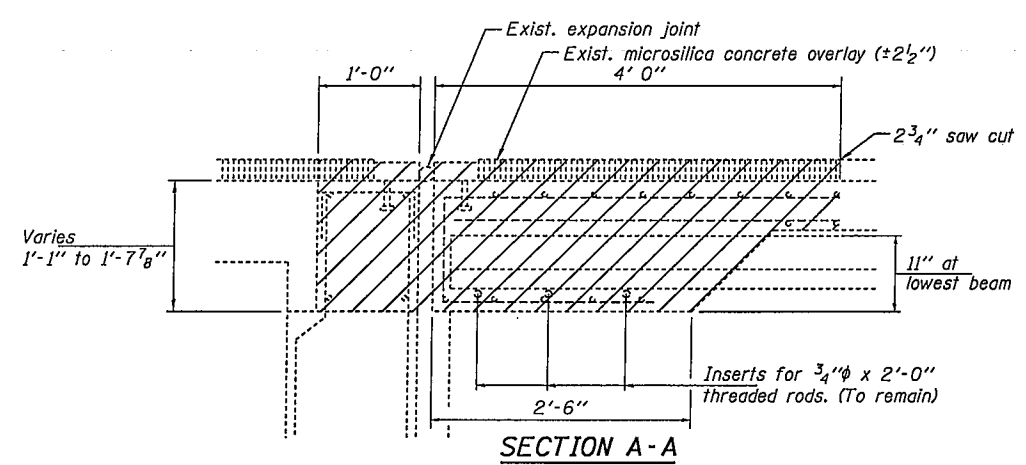


STATE OF ILLINOIS
DEPARTMENT OF TRANSPORTATION



BILL OF MATERIAL

Bar	No.	Size	Length	Shape
d(E)	40	#7	33'-3"	—
a1(E)	120	#6	9'-3"	—
a2(E)	80	#7	22'-6"	—
d1(E)	34	#5	4'-9"	J
d2(E)	22	#5	4'-9"	J
h(E)	16	#6	33'-3"	—
h1(E)	32	#6	22'-0"	—
x(E)	132	#6	11'-6"	—
Bar Splacers			Each	56
Reinforcement Bars, Epoxy Coated			Pound	12520
Concrete Superstructure			Cu. Yd.	70.0

ABUTMENT DETAILS
FAI 172 OVER BN RR
SN 001-0050 & 0051

DESIGNED	VHV
CHECKED	DAB
DRAWN	baliva
CHECKED	VHV DAB

FEBRUARY 9, 2009
EXAMINED *Carl Proyer*
ENGINEER OF STRUCTURAL SERVICES
PASSED *Ralph E. Anderson*
ENGINEER OF BRIDGES AND STRUCTURES

SHEET NO. 5 8 SHEETS	F.A.I. RTE.	SECTION	COUNTY	TOTAL SHEETS	SHEET NO.
	172	(1-5)RS-1: (1-6)RS	ADAMS	108	105
FED. ROAD DIST. NO. ILLINOIS			FED. AID PROJECT		
CONTRACT NO. 72694					