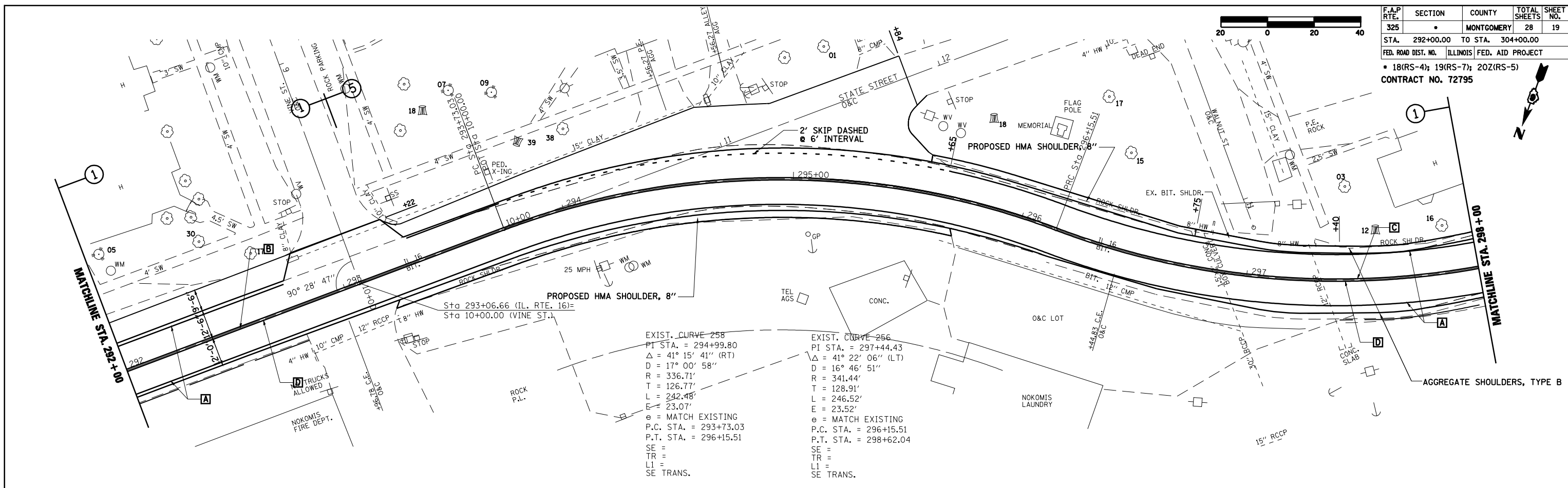
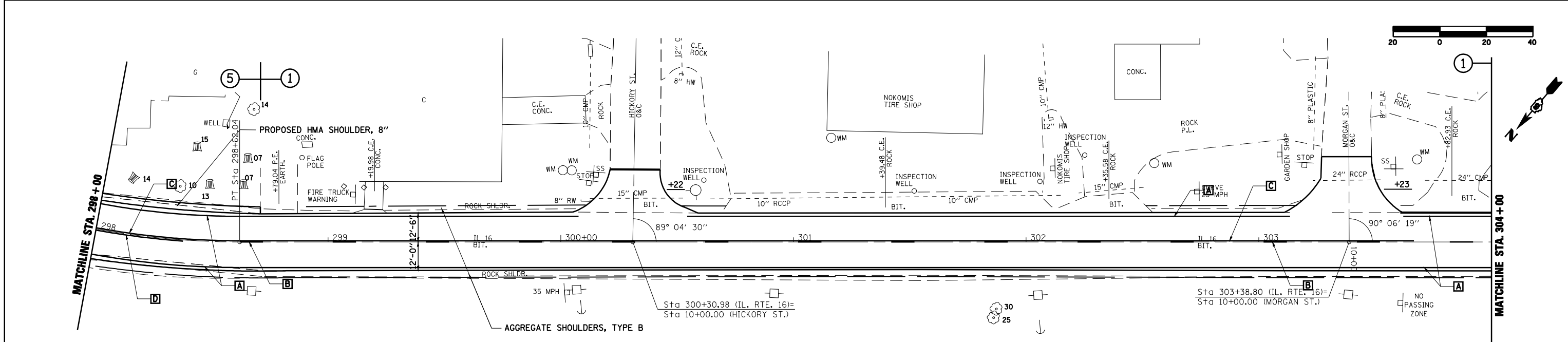


F.A.P. RTE.	SECTION	COUNTY	TOTAL SHEETS	SHEET NO.
325	*	MONTGOMERY	28	19
STA. 292+00.00 TO STA. 304+00.00				
FED. ROAD DIST. NO. ILLINOIS FED. AID PROJECT				
* 18(RS-4); 19(RS-7); 20Z(RS-5)				
CONTRACT NO. 72795				

PLAN	SURVEYED	DATE
	PLOTTED	BY
	NOTED	
	NO. OF WAY CHECKED	
	CADD FILE NAME	



PROFILE	SURVEYED	DATE
	PLOTTED	BY
	NOTED	
	STRUCTURE NOTATIONS CHYD	



THERMOPLASTIC PAVEMENT MARKING LEGEND

- A** 5" SOLID (WHITE)
- B** 5" SKIP-DASH (YELLOW)
- C** 5" SOLID (YELLOW)
- D** 5" DOUBLE YELLOW (WIDE)
- E** 13" ITEM **D** 5" DOUBLE YELLOW (WIDE)

PREFORMED PLASTIC PAVEMENT MARKING, TYP. B LEGEND

- 1** 6" SOLID (WHITE)
- 2** 24" STOP BAR (WHITE)
- 3** 6" CROSSWALKS (WHITE)
- 4** LETTERS & SYMBOLS
- 5** 12" DIAGONAL (WHITE)
- 6** 12" DIAGONAL (YELLOW)

REVISIONS	
NAME	DATE

ILLINOIS DEPARTMENT OF TRANSPORTATION

F.A.P. ROUTE 325
PLAN SHEET 5 OF 7
(PART "A")

DATE 3/2004

DRAWN BY MLO
 CHECKED BY SJK