

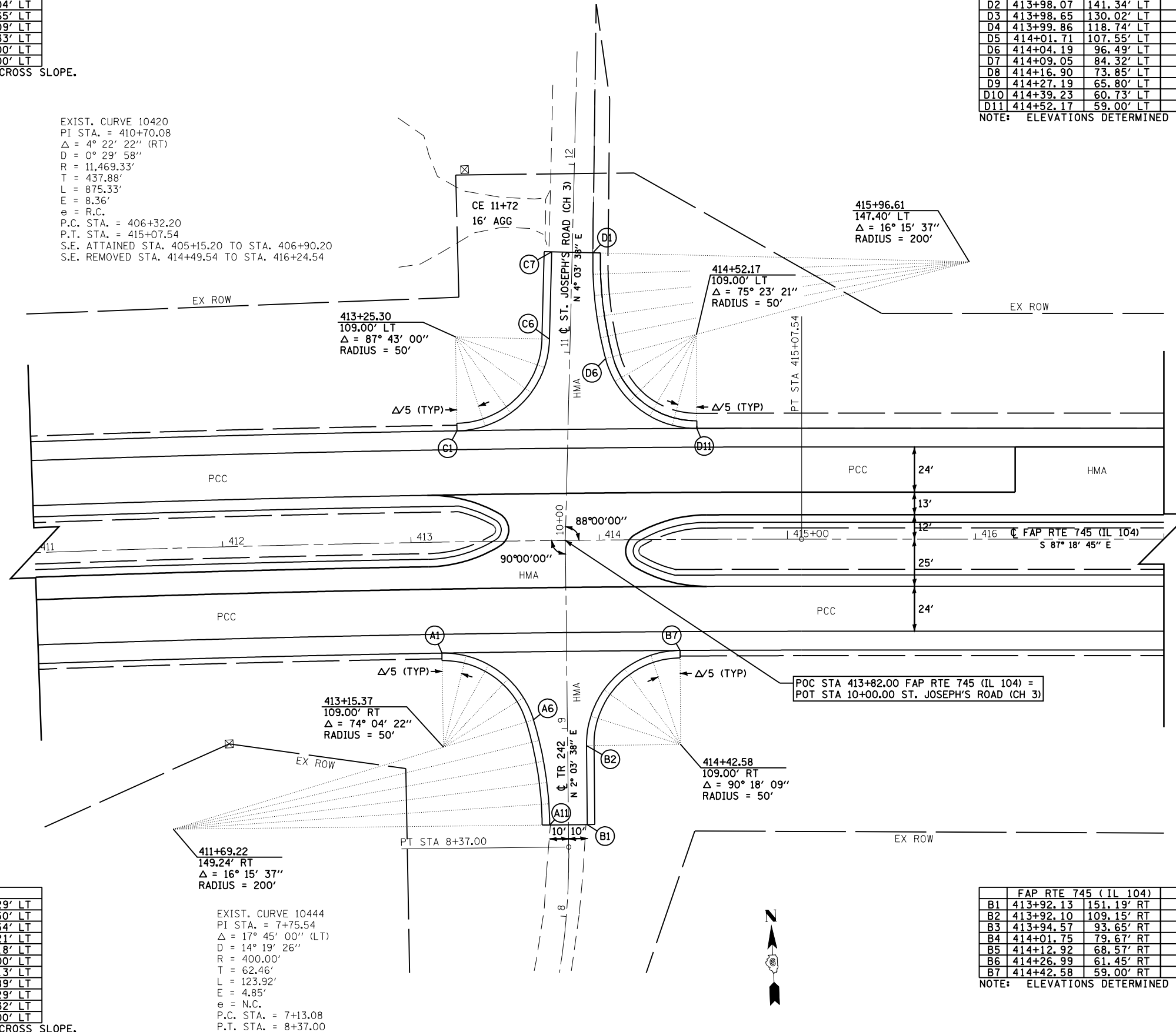
	FAP RTE 745 (IL 104)		ST. JOSEPH'S ROAD	
C1	413+25.30	59.00' LT	10+56.83	59.01' LT
C2	413+40.29	61.33' LT	10+59.76	44.04' LT
C3	413+53.87	68.12' LT	10+67.06	30.65' LT
C4	413+64.77	78.72' LT	10+78.05	20.09' LT
C5	413+71.96	92.14' LT	10+91.72	13.33' LT
C6	413+74.80	107.12' LT	11+06.80	11.00' LT
C7	413+76.43	153.48' LT	11+53.19	11.00' LT

NOTE: ELEVATIONS DETERMINED FROM EXISTING CROSS SLOPE.

EXIST. CURVE 10420
 PI STA. = 410+70.08
 $\Delta = 4^\circ 22' 22''$ (RT)
 $D = 0^\circ 29' 58''$
 $R = 11,469.33'$
 $T = 437.88'$
 $L = 875.33'$
 $E = 8.36'$
 $e = R.C.$
 P.C. STA. = 406+32.20
 P.T. STA. = 415+07.54
 S.E. ATTAINED STA. 405+15.20 TO STA. 406+90.20
 S.E. REMOVED STA. 414+49.54 TO STA. 416+24.54

	FAP RTE 745 (IL 104)		ST. JOSEPH'S ROAD	
D1	413+98.12	152.72' LT	11+53.19	11.00' RT
D2	413+98.07	141.34' LT	11+41.81	11.32' RT
D3	413+98.65	130.02' LT	11+30.51	12.29' RT
D4	413+99.86	118.74' LT	11+19.28	13.89' RT
D5	414+01.71	107.55' LT	11+08.16	16.13' RT
D6	414+04.19	96.49' LT	10+97.19	19.00' RT
D7	414+09.05	84.32' LT	10+85.19	24.29' RT
D8	414+16.90	73.85' LT	10+74.97	32.52' RT
D9	414+27.19	65.80' LT	10+67.25	43.13' RT
D10	414+39.23	60.73' LT	10+62.56	55.39' RT
D11	414+52.17	59.00' LT	10+61.21	68.44' RT

NOTE: ELEVATIONS DETERMINED FROM EXISTING CROSS SLOPE.



	FAP RTE 745 (IL 104)		TR 242	
A1	413+15.37	59.00' RT	9+40.81	66.29' LT
A2	413+28.21	60.66' RT	9+39.22	53.50' LT
A3	413+40.22	65.51' RT	9+34.42	41.54' LT
A4	413+50.59	73.24' RT	9+26.72	31.21' LT
A5	413+58.65	83.35' RT	9+16.63	23.18' LT
A6	413+63.85	95.18' RT	9+04.81	18.00' LT
A7	413+66.72	106.17' RT	8+93.82	15.13' LT
A8	413+68.97	117.30' RT	8+82.70	12.89' LT
A9	413+70.58	128.53' RT	8+71.46	11.29' LT
A10	413+71.55	139.84' RT	8+60.15	10.32' LT
A11	413+71.87	151.19' RT	8+48.81	10.00' LT

NOTE: ELEVATIONS DETERMINED FROM EXISTING CROSS SLOPE.

	FAP RTE 745 (IL 104)		TR 242	
B1	413+92.13	151.19' RT	8+48.81	10.00' RT
B2	413+92.10	109.15' RT	8+90.84	10.00' RT
B3	413+94.57	93.65' RT	9+06.34	12.46' RT
B4	414+01.75	79.67' RT	9+20.32	19.61' RT
B5	414+12.92	68.57' RT	9+31.39	30.74' RT
B6	414+26.99	61.45' RT	9+38.46	44.75' RT
B7	414+42.58	59.00' RT	9+40.84	60.26' RT

NOTE: ELEVATIONS DETERMINED FROM EXISTING CROSS SLOPE.

