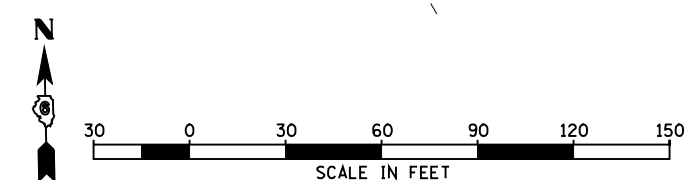
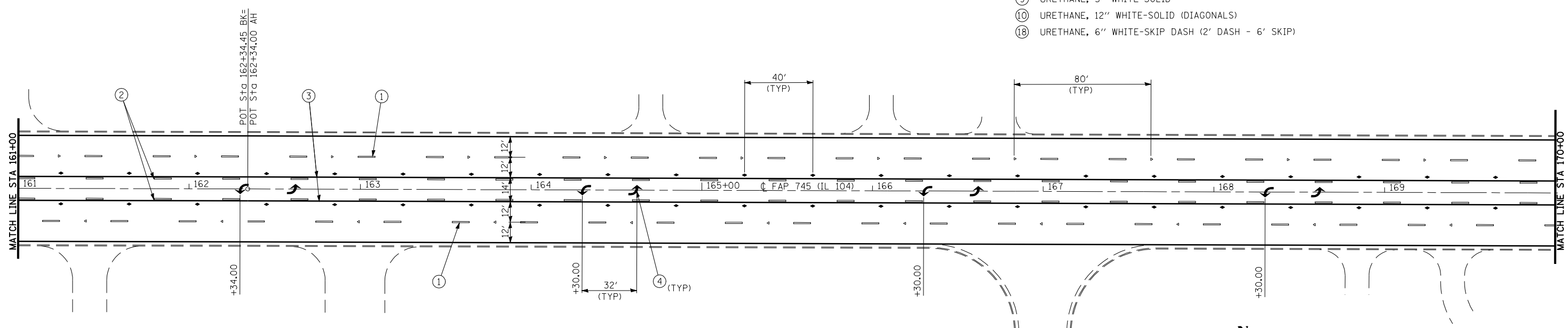


- LEGEND:
- ▷ ONE-WAY CRYSTAL RAISED REFLECTIVE PAVEMENT MARKER
  - ◄ TWO-WAY AMBER RAISED REFLECTIVE PAVEMENT MARKER
  - ▶ ONE-WAY AMBER RAISED REFLECTIVE PAVEMENT MARKER
  - ① PREFORMED PLASTIC, TYPE B-INLAID, 5" WHITE-SKIP DASH
  - ② URETHANE, 5" YELLOW-SKIP DASH
  - ③ URETHANE, 5" YELLOW-SOILD
  - ④ PREFORMED PLASTIC, TYPE B-INLAID, WHITE-LEFT TURN ARROWS
  - ⑤ URETHANE, 5" YELLOW-DOUBLE SOILD
  - ⑥ URETHANE, 6" WHITE-SOLID
  - ⑦ PREFORMED PLASTIC, TYPE B-INLAID, 24" WHITE-SOILD (STOP BAR)
  - ⑧ URETHANE, 12" YELLOW-SOLID (DIAGONALS)
  - ⑨ URETHANE, 5" WHITE-SOLID
  - ⑩ URETHANE, 12" WHITE-SOLID (DIAGONALS)
  - ⑪ URETHANE, 6" WHITE-SKIP DASH (2' DASH - 6' SKIP)
- LEGEND: (CONT)
- ⑪ PAINT, 5" WHITE-SKIP DASH
  - ⑫ PAINT, 5" YELLOW-SOLID
  - ⑬ PAINT, 5" WHITE-SOLID



FILE NAME =	USER NAME = laughlinr1	DESIGNED <i>EBB</i>	REVISED -	<b>STATE OF ILLINOIS DEPARTMENT OF TRANSPORTATION</b>	<b>PAVEMENT MARKING PLAN</b>			F.A.P. RTE.	SECTION	COUNTY	TOTAL SHEETS	SHEET NO.	
et:\pwwork\pwidot\LAUGHLINRL\dms23418\pmtMark_02.dgn		DRAWN <i>BGJ</i>	REVISED -		745	103 (RS-12, 104 (RS-5))	ADAMS	109	62	CONTRACT NO. 72877			
	PLOT SCALE = 59.9999' / IN.	CHECKED -	REVISED -		SCALE: 1"=30'			SHEET NO. 2 OF 23 SHEETS		STA. 152+00 TO STA. 170+00		FED. ROAD DIST. NO. ILLINOIS FED. AID PROJECT	
	PLOT DATE = Jan-23-2009 11:53:13AM	DATE -	REVISED -										