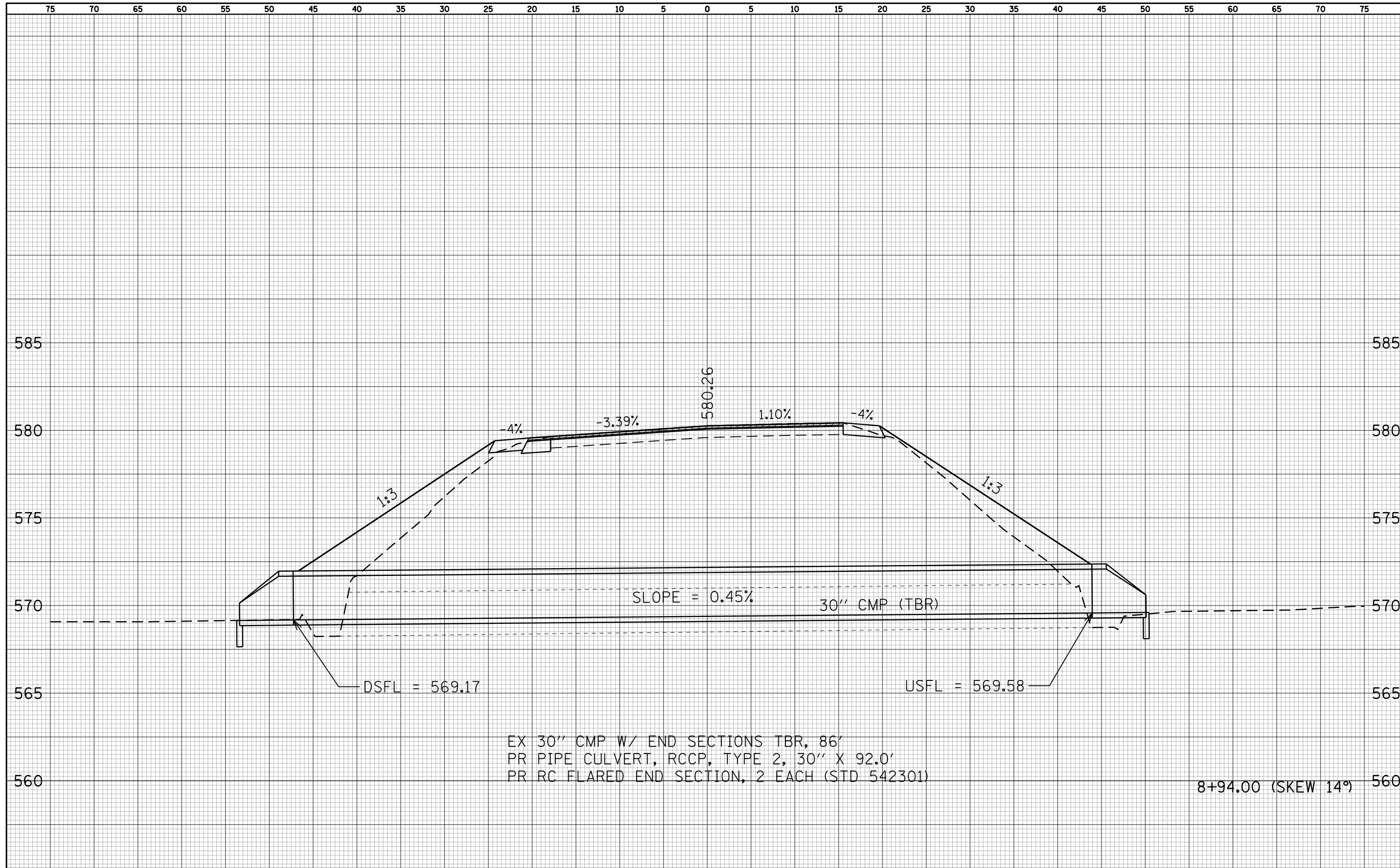


DATE	
BY	
SURVEYED	
PLOTTED	
TEMPLATE	
AREAS	
CHECKED	
FINAL SURVEY	
NOTE BOOK	
NO.	

DATE	
BY	
SURVEYED	
PLOTTED	
TEMPLATE	
AREAS	
CHECKED	
ORIGINAL SURVEY	
NOTE BOOK	
NO.	



EX 30" CMP W/ END SECTIONS TBR, 86'
 PR PIPE CULVERT, RCCP, TYPE 2, 30" X 92.0'
 PR RC FLARED END SECTION, 2 EACH (STD 542301)

8+94.00 (SKEW 14°) 560

FILE NAME =	USER NAME = laughlinr1	DESIGNED -	REVISD -	STATE OF ILLINOIS DEPARTMENT OF TRANSPORTATION	ROCK QUARRY ROAD (TR 383) CROSS SECTION SHEET	F.A. RTE.	SECTION	COUNTY	TOTAL SHEETS	SHEET NO.
es:\pwork\pwidot\LAUGHLINR1\dms23418\001.Sheet.dgn	PLOT SCALE = 10.0000 ' / IN.	CHECKED -	REVISD -			745	103(RS-12), 104(RS-5)	ADAMS	109	97
PLOT DATE = Jan-23-2009 11:55:08AM	CHECKED -	DRAWN -	REVISD -			CONTRACT NO. 72877				
						SCALE: 1"=5'	SHEET NO. 3 OF 4 SHEETS	STA. 8+94.00	TO STA. 8+94.00	FED. ROAD DIST. NO.