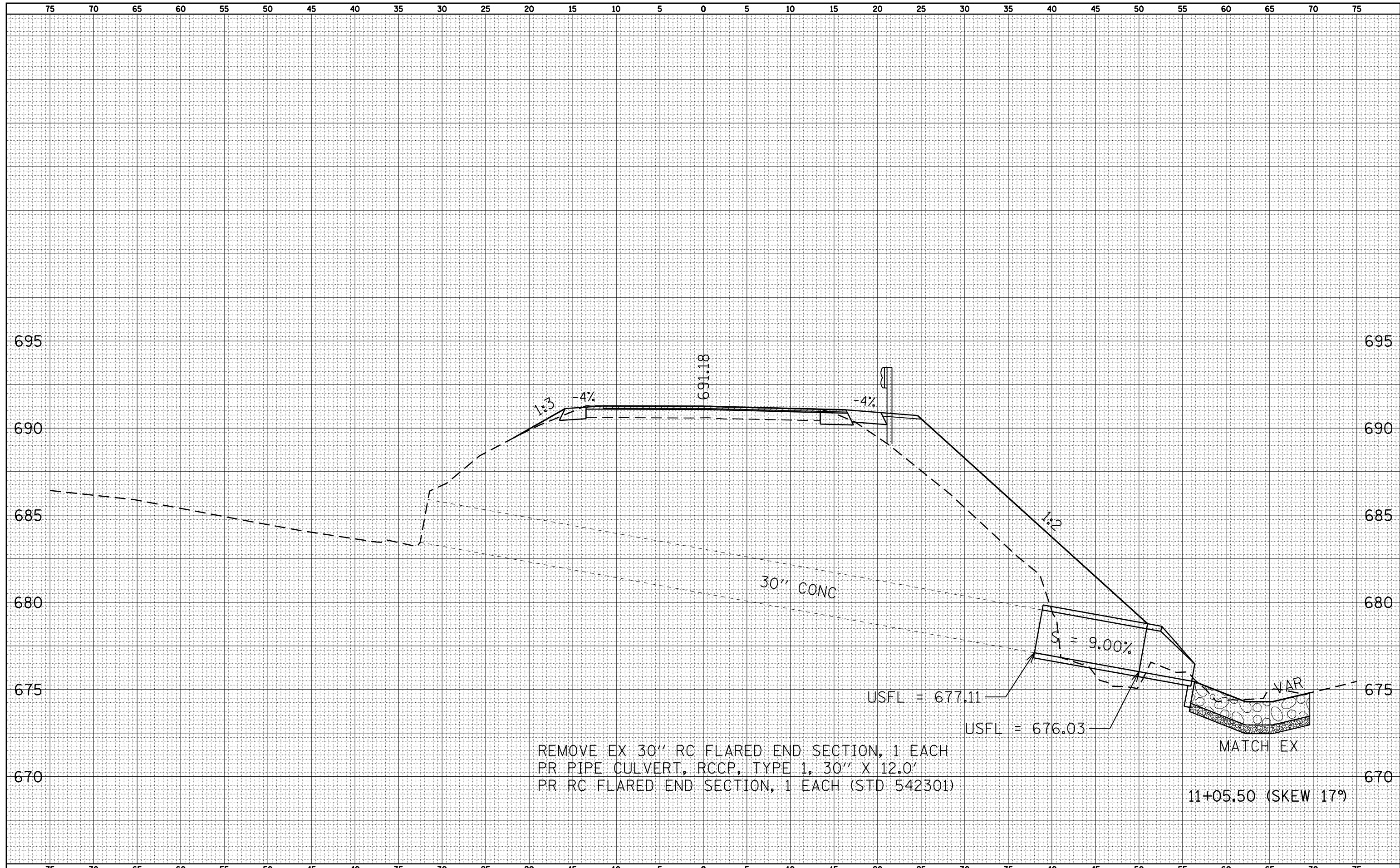


| | |
|--------------|--|
| DATE | |
| BY | |
| SURVEYED | |
| PLOTTED | |
| TEMPLATE | |
| AREAS | |
| CHECKED | |
| FINAL SURVEY | |
| NOTE BOOK | |
| NO. | |

| | |
|-----------------|--|
| DATE | |
| BY | |
| SURVEYED | |
| PLOTTED | |
| TEMPLATE | |
| AREAS | |
| CHECKED | |
| ORIGINAL SURVEY | |
| NOTE BOOK | |
| NO. | |



REMOVE EX 30" RC FLARED END SECTION, 1 EACH
 PR PIPE CULVERT, RCCP, TYPE 1, 30" X 12.0'
 PR RC FLARED END SECTION, 1 EACH (STD 542301)

11+05.50 (SKEW 17°)

| | | | | | | | | | | | | | |
|---|------------------------|------------|------------|---|---|----------------------|-------|-------------------------|---------|---------------|------------------|--------------------|--|
| FILE NAME = | USER NAME = laughlinr1 | DESIGNED - | REVISIED - | STATE OF ILLINOIS DEPARTMENT OF TRANSPORTATION | ST. JOSEPH'S / ELLINGTON ROAD (CH 3) CROSS SECTION SHEET | | | F.A. RTE. | SECTION | COUNTY | TOTAL SHEETS | SHEET NO. | |
| es:\pwork\pwidot\LAUGHLINRL\dms23418\004.Sheets.dgn | | CHECKED - | REVISIED - | | 745 | 103(RS-12, 104(RS-5) | ADAMS | 109 | 105 | | | | |
| PLOT SCALE = 10.0000' / IN. | | DRAWN - | REVISIED - | | SCALE: 1"=5' | | | SHEET NO. 2 OF 6 SHEETS | | STA. 11+05.50 | TO STA. 11+05.50 | CONTRACT NO. 72877 | |
| PLOT DATE = Jan-23-2009 11:55:31AM | | CHECKED - | REVISIED - | | FED. ROAD DIST. NO. ILLINOIS FED. AID PROJECT | | | | | | | | |