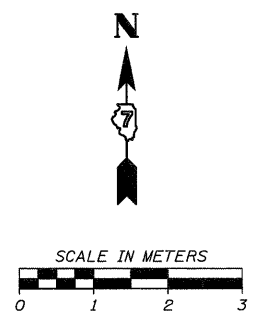
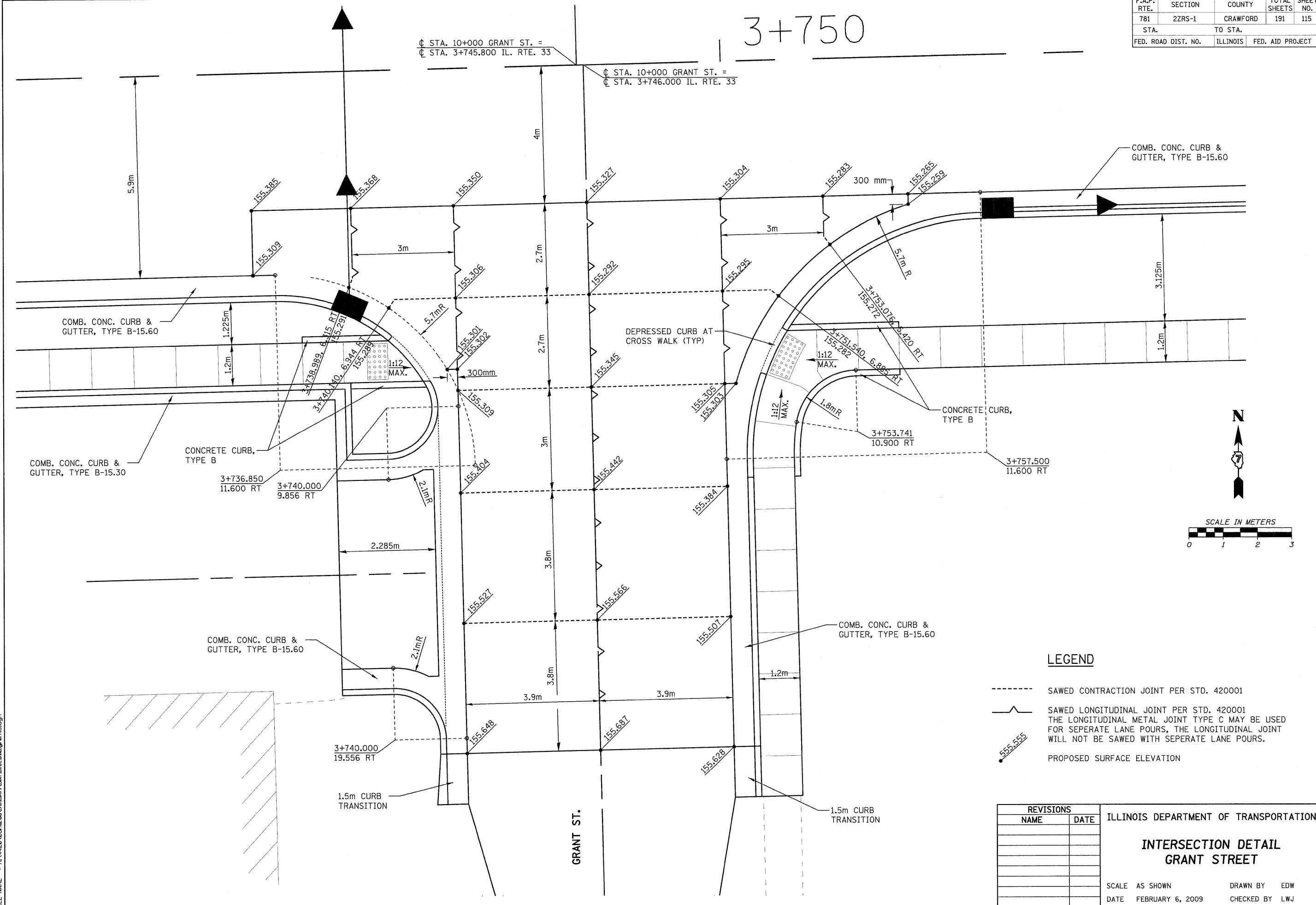


F.A.P. RTE.	SECTION	COUNTY	TOTAL SHEETS	SHEET NO.
781	2ZRS-1	CRAWFORD	191	115
STA.		TO STA.		
FED. ROAD DIST. NO.		ILLINOIS	FED. AID PROJECT	

3+750

± STA. 10+000 GRANT ST. =
± STA. 3+745.800 IL. RTE. 33

± STA. 10+000 GRANT ST. =
± STA. 3+746.000 IL. RTE. 33



LEGEND

- SAWED CONTRACTION JOINT PER STD. 420001
- ~ SAWED LONGITUDINAL JOINT PER STD. 420001
THE LONGITUDINAL METAL JOINT TYPE C MAY BE USED FOR SEPARATE LANE POURS, THE LONGITUDINAL JOINT WILL NOT BE SAWED WITH SEPARATE LANE POURS.
- 555.555 PROPOSED SURFACE ELEVATION

REVISIONS		ILLINOIS DEPARTMENT OF TRANSPORTATION
NAME	DATE	
		INTERSECTION DETAIL GRANT STREET
		SCALE AS SHOWN DATE FEBRUARY 6, 2009
		DRAWN BY EDW CHECKED BY LWJ

PLOT DATE = 2/6/2009
 FILE NAME = H:\4420\4420.dwg

H. M. & G. NO. 4420