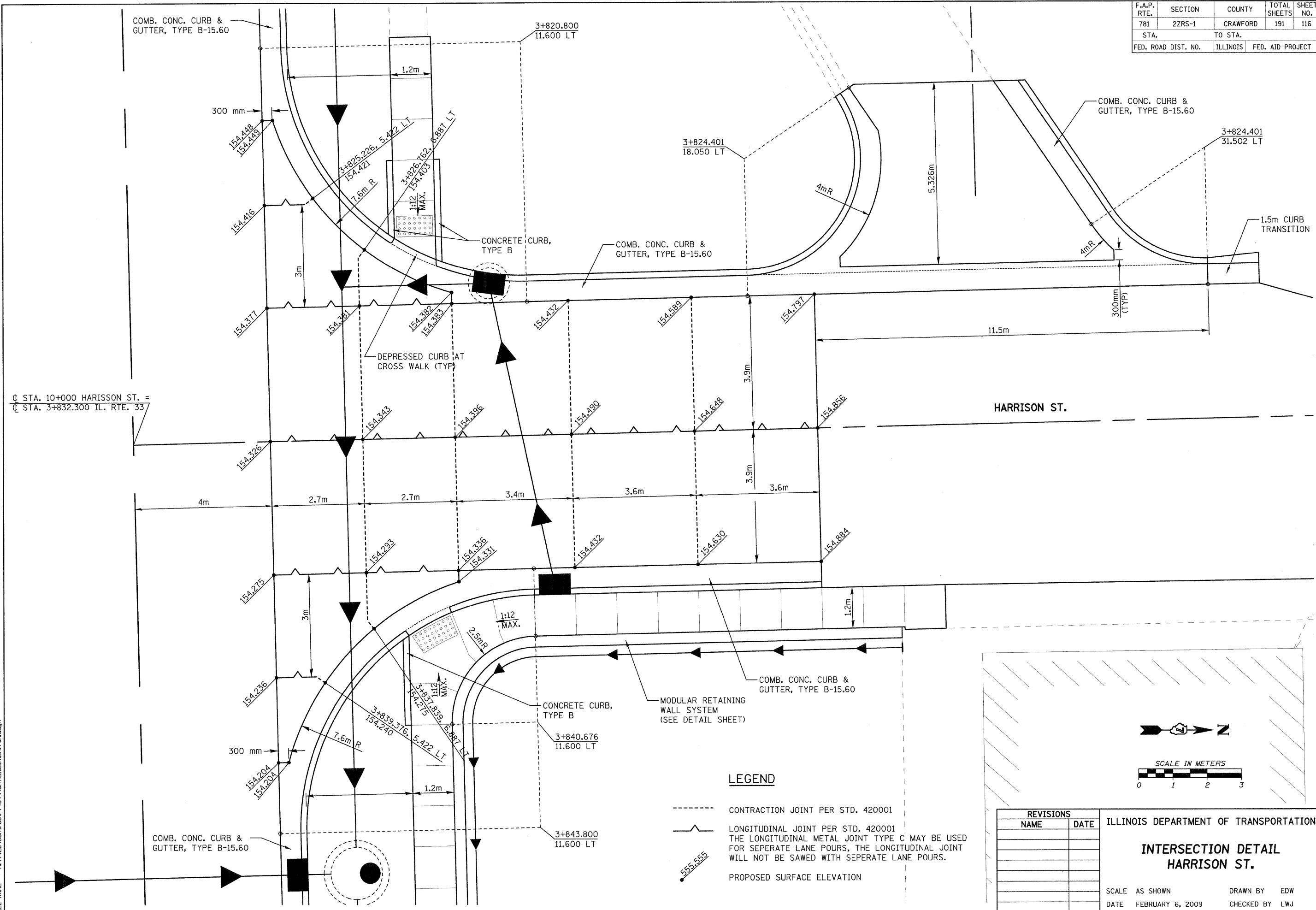


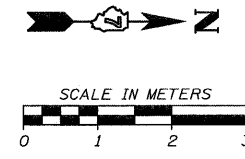
F.A.P. RTE.	SECTION	COUNTY	TOTAL SHEETS	SHEET NO.
781	2ZRS-1	CRAWFORD	191	116
STA.		TO STA.		
FED. ROAD DIST. NO.		ILLINOIS	FED. AID PROJECT	



Ⓞ STA. 10+000 HARRISON ST. =
 Ⓞ STA. 3+832.300 IL. RTE. 33

LEGEND

- CONTRACTION JOINT PER STD. 420001
- |- LONGITUDINAL JOINT PER STD. 420001
THE LONGITUDINAL METAL JOINT TYPE C MAY BE USED FOR SEPERATE LANE POURS, THE LONGITUDINAL JOINT WILL NOT BE SAWED WITH SEPERATE LANE POURS.
- 555.555 PROPOSED SURFACE ELEVATION



REVISIONS		ILLINOIS DEPARTMENT OF TRANSPORTATION
NAME	DATE	
		INTERSECTION DETAIL HARRISON ST. SCALE AS SHOWN DRAWN BY EDW DATE FEBRUARY 6, 2009 CHECKED BY LWJ

PLOT DATE = 2/5/2009
 FILE NAME = H:\4420\Contract 74349\SH1_116.mxd

H. M. & G. NO. 4420