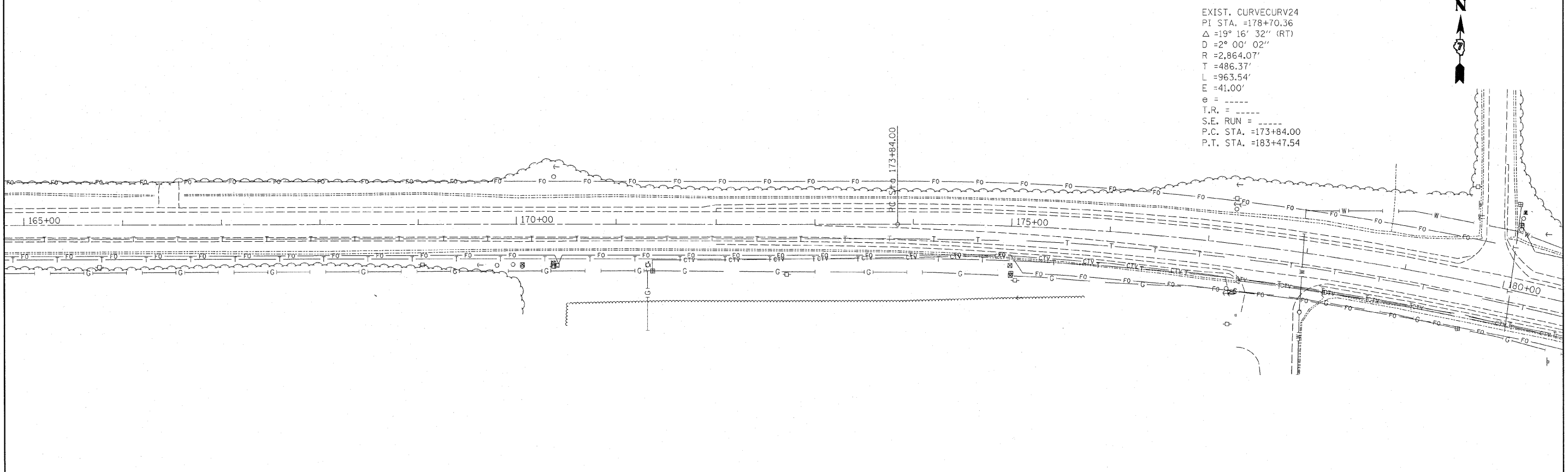


EXIST. CURVE CURV24  
 PI STA. =178+70.36  
 $\Delta$  =19° 16' 32" (RT)  
 D =2° 00' 02"  
 R =2,864.07'  
 T =486.37'  
 L =963.54'  
 E =41.00'  
 e = ----  
 T.R. = ----  
 S.E. RUN = ----  
 P.C. STA. =173+84.00  
 P.T. STA. =183+47.54



FILE NAME = c:\pwork\p\idot\STEFFENK\123229\0	USER NAME = steffenk 74379-shr-plan.dgn	DESIGNED - DRAWN -	REVISED - REVISED -	<b>STATE OF ILLINOIS DEPARTMENT OF TRANSPORTATION</b>	<b>PLAN SHEETS</b>			F.A.P. RTE. 773	SECTION .	COUNTY Cumberland	TOTAL SHEETS 26	SHEET NO. 23
	PLOT SCALE = 50.0000' / IN.	CHECKED -	REVISED -		SCALE: 1"=50'	SHEET NO. 6 OF 9 SHEETS	STA. 150+00 TO STA. 180+00	CONTRACT NO. 74379				
	PLOT DATE = 2/6/2009	DATE -	REVISED -		ILLINOIS FED. AID PROJECT							
*110RS-1,(111,111)RS-2,F-ZRS-1												