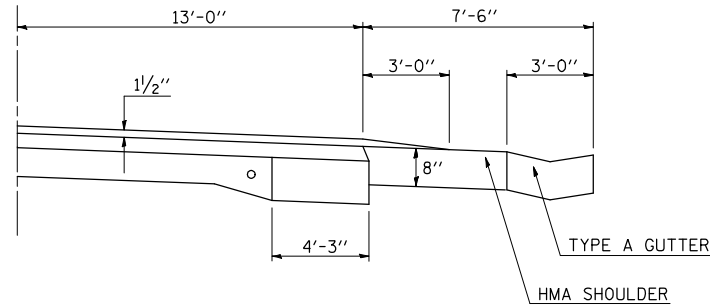


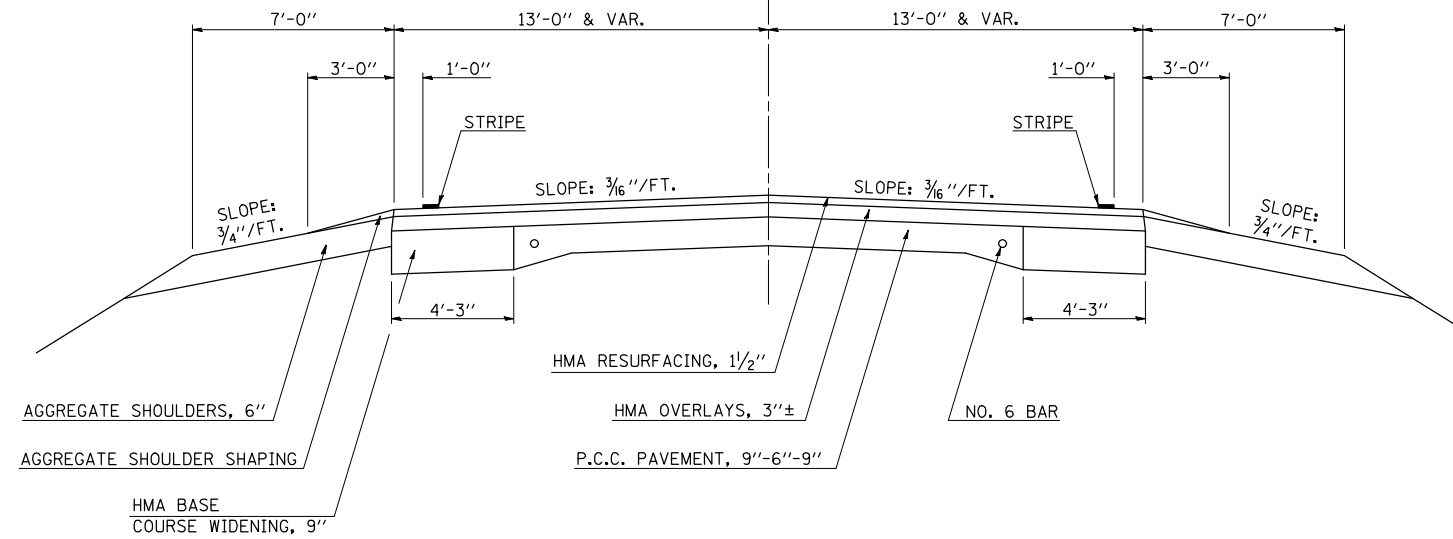
DETAIL

LT. STA. 716+00.00 TO LT. STA. 723+30.00
 RT. STA. 716+85.00 TO RT. STA. 719+50.00
 LT. STA. 740+40.00 TO LT. STA. 752+20.00
 RT. STA. 740+80.00 TO RT. STA. 754+16.00



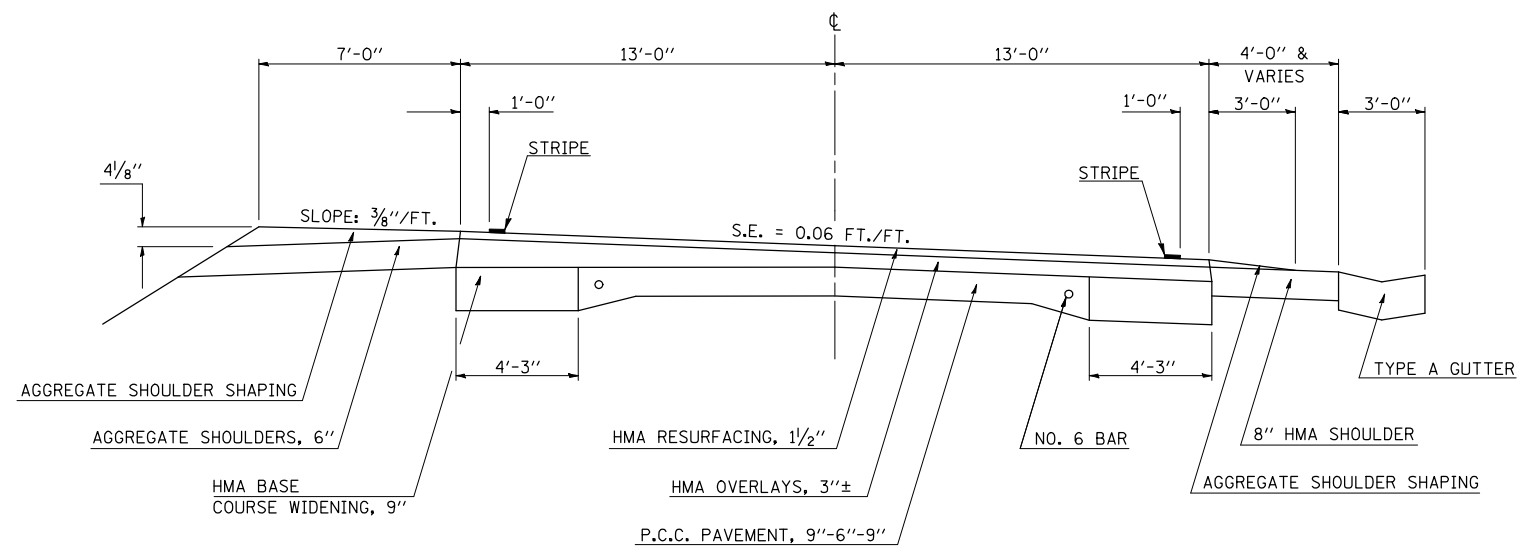
(A) EXISTING TYPICAL CROSS SECTION

STATION	TO	STATION
626+00.00		729+89.30 (BRIDGE OMISSION)
732+02.55		754+16.00
776+27.00		816+08.60 (BK)
813A+97.10 (AH)		814A+11.10
820+50.00		869+11.40 (RAILROAD OMISSION)
869+20.30		1000+39.00
1014+94.00		1024+57.00
116+08.60		121+64.00
(Bismarck Rd.)		(Bismarck Rd.)



(B) EXISTING TYPICAL CROSS SECTION

STATION	TO	STATION
754+16.00		760+00.00



FILE NAME =	USER NAME = piersonbr	DESIGNED - BJM	REVISED -
ct:\pw\work\PIWIDOT\PIERSONBR\d0107117\90914details.dgn		DRAWN - BBP	REVISED -
		CHECKED - BJM	REVISED -
		DATE - 11/28/07	REVISED -

STATE OF ILLINOIS
 DEPARTMENT OF TRANSPORTATION

EXISTING TYPICAL CROSS SECTIONS

SCALE: NONE	SHEET NO.	OF	SHEETS	STA.	TO	STA.
-------------	-----------	----	--------	------	----	------

F.A.P. RTE.	SECTION	COUNTY	TOTAL SHEETS	SHEET NO.
711	116RS-3	VERMILION	51	9
FED. ROAD DIST. NO. ILLINOIS FED. AID PROJECT			CONTRACT NO. 90914	