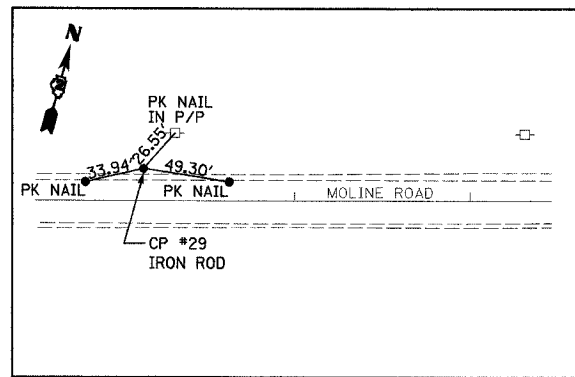
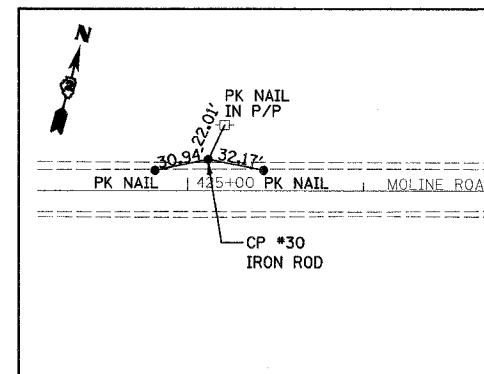


FAS ROUTE	SECTION	COUNTY	TOTAL SHEETS	SHEET NO
1197	105-T	WHITESIDE	59	7
STA. 429+00		TO STA. 425+38		

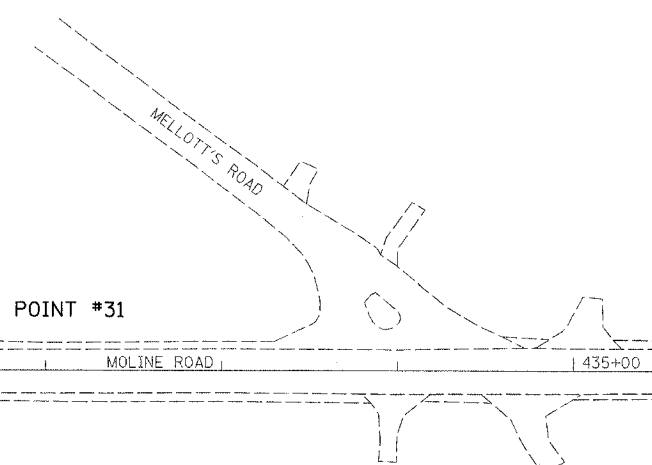
EXISTING CONDITIONS:
CONTRACT 64421



CONTROL POINT #29
STA 415+14, 18.2' LT
N 1853460.7384
E 2396440.5818



CONTROL POINT #30
STA 425+11.84 17.9' LT
N 18540660147
E 23972336807

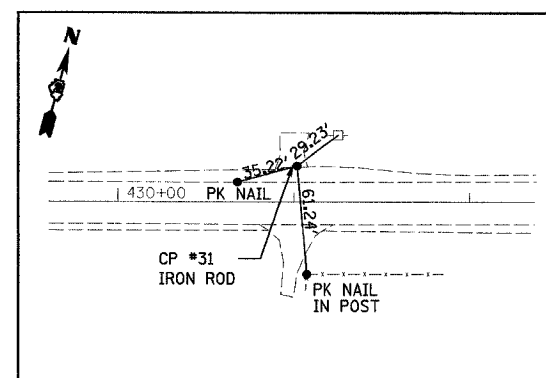


CONTROL POINT #30

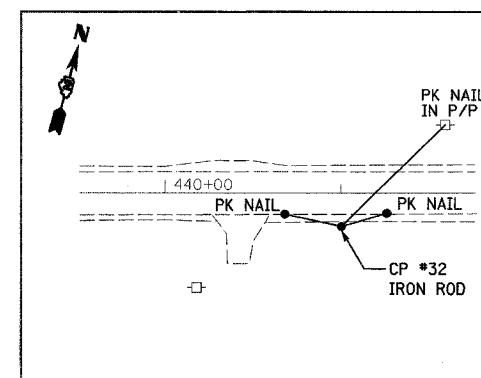
CONTROL POINT #31

CONTROL POINT #32

BM 410



CONTROL POINT #31
STA 431+01.81 20.7' LT
N 18544261706
E 23977009665



CONTROL POINT #32
STA 441+00 18.6' RT
N 18550009663
E 239858185368

NOTE:
BASIS OF BEARINGS AND COORDINATES IS ILLINOIS STATE PLANE (NAD83) WEST ZONE. GROUND VALUES SHOWN (COMBINED GRID FACTOR FOR PROJECT AREA 0.999929977). NGS MONUMENTS BUR40-1A & BUR40-1B WERE USED FOR CONTROL.

BENCHMARKS

BM 409 "□" CUT ON S.W. WINGWALL OF BRIDGE
STA. 428+05.35 21.4' RT
ELEV. 623.39'

BM 410 "□" CUT ON CONCRETE HEADWALL
@ PRIVATE ENTRANCE 23601 MOLINE ROAD
STA. 440+57.6 23.5' LT
ELEV. 629.34'

REVISIONS	
NAME	DATE

ILLINOIS DEPARTMENT OF TRANSPORTATION
FAS 1197 (MOLINE ROAD)
SECTION 105-T
WHITESIDE COUNTY
ALIGNMENT & TIES
BENCHMARKS
DRAWN BY: HLC

PLAN	SUBMITTED	DATE
NO.	BY	
	DATE	
	BY	
	DATE	
	BY	
	DATE	
	BY	
	DATE	

11/3/2004
DATE TIME
BY
BY
BY
BY
BY
BY
BY
BY