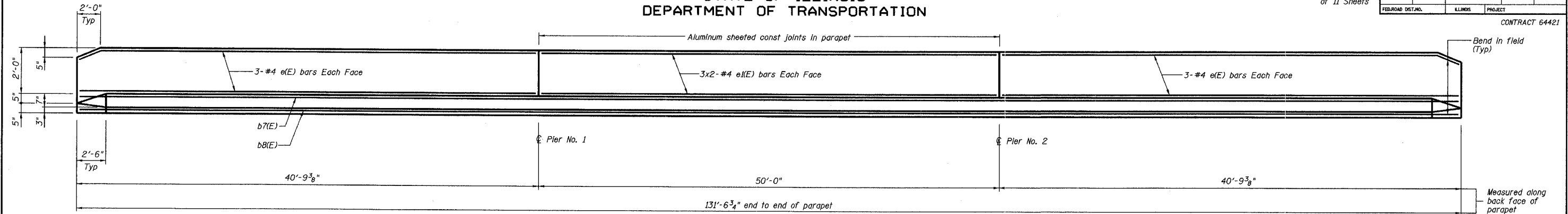


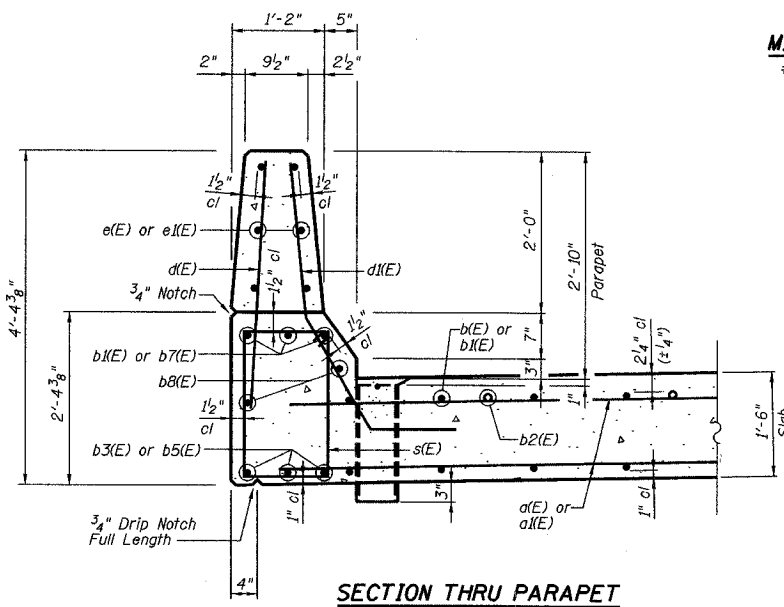
STATE OF ILLINOIS  
DEPARTMENT OF TRANSPORTATION

Sheet No. 6  
of 11 Sheets

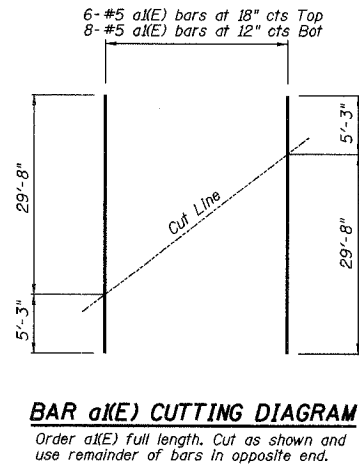
ROUTE NO.	SECTION	COUNTY	TOTAL SHEETS	SHEET NO.
FAS 1197	105BR-2	WHITESIDE	59	21
FEDROAD DIST. NO.	ILLINOIS	PROJECT	CONTRACT 64421	



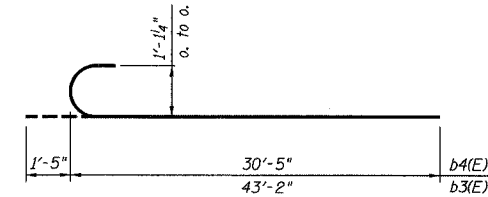
INSIDE ELEVATION OF PARAPET



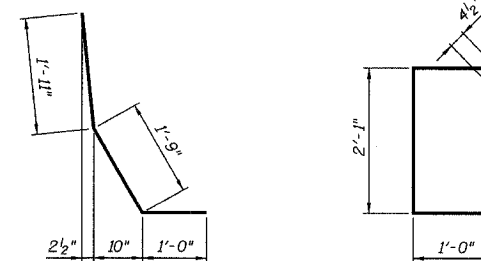
MIN BAR LAP  
#4 bars = 1'-4"



BAR a(E) CUTTING DIAGRAM  
Order a(E) full length. Cut as shown and use remainder of bars in opposite end.

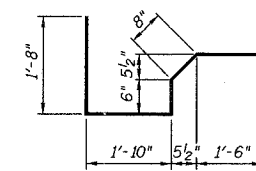


BARS b3(E) AND b4(E)

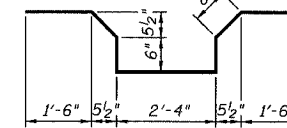


BAR d(E)

BAR s(E)



BAR x(E)

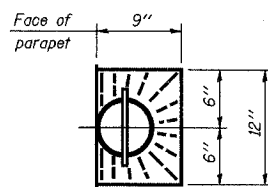


BAR x(E)

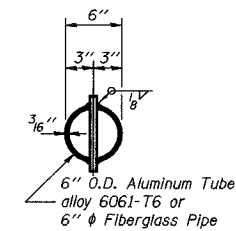
SUPERSTRUCTURE  
BILL OF MATERIAL

Bar	No.	Size	Length	Shape
a(E)	8	#5	36'-2"	—
a(E)	217	#5	34'-11"	—
b(E)	62	#5	21'-4"	—
b(E)	74	#10	49'-3"	—
b2(E)	60	#10	15'-4"	—
b3(E)	60	#10	44'-7"	—
b4(E)	46	#10	31'-10"	—
b5(E)	90	#10	21'-2"	—
b6(E)	23	#10	29'-2"	—
b7(E)	12	#10	25'-10"	—
b8(E)	16	#5	34'-8"	—
c(E)	264	#4	3'-0"	—
d(E)	288	#5	4'-8"	—
e(E)	24	#4	40'-6"	—
e(E)	24	#4	25'-7"	—
s(E)	264	#4	6'-11"	—
x(E)	72	#5	6'-2"	—
x(E)	72	#5	7'-8"	—
Reinforcement Bars, Epoxy Coated		Pound	65,280	
Concrete Superstructure		Cu. Yds.	293.4	

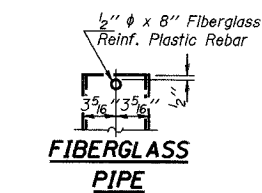
Reinforcement bars designated (E) shall be epoxy coated.  
Bars indicated thus 1 x 3-#5 etc. indicates 1 line of bars with 3 lengths per line.



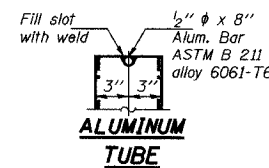
TOP PLAN



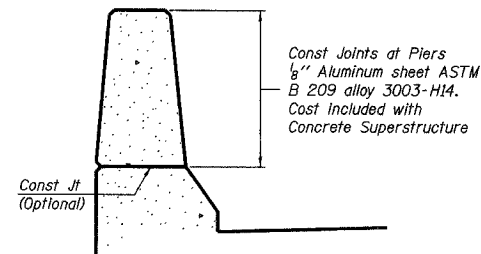
TOP PLAN  
(Showing Aluminum Tube)



FIBERGLASS PIPE



ALUMINUM TUBE



PARAPET JOINT DETAILS

Notes:  
The exterior surfaces of the Fiberglass Floor Drain shall be painted with a vinyl enamel coat. The color shall be Munsell Standard 10Y 7/1 Light Gray. The exterior surfaces of the drains shall be cleaned according to Steel Structures Painting Council's Spec SSPC-SPI prior to painting. Painting of the Fiberglass Floor Drains will not be required when the exterior surfaces of the furnished drains are coated by the manufacturer with silver pigments or a pigment that matches the color of the concrete slab. Fiberglass pipe shall conform to ASTM D2996, with short-time rupture strength hoop tensile stress of 30,000 psi minimum. The surface of the Fiberglass pipe shall be free of bond inhibiting agents. Fiberglass to have prewash as per MIL-P-15328 prior to painting.

SUPERSTRUCTURE DETAILS

REVISIONS NO. DATE INITIALS		MOLINE ROAD OVER UNNAMED TRIBUTARY TO ROCK RIVER		DRAWN BY: R King DATE: 8/04
		FAS ROUTE 1197 SECTION 105BR-2		CHECKED BY: CMV DATE: 8/04
		STA 229+67.50 SN 098-0110		DATE: CWC DATE: 8/04
		WHITESIDE COUNTY		PROJECT NO.: 4858-3
		HOMER L. CHASTAIN & ASSOCIATES, LLP CONSULTING ENGINEERS 184-001397		SHEET NO.: