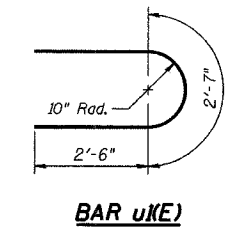
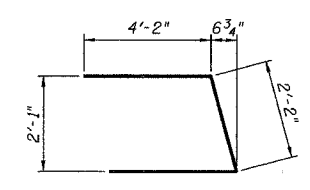
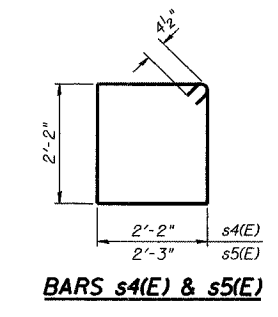
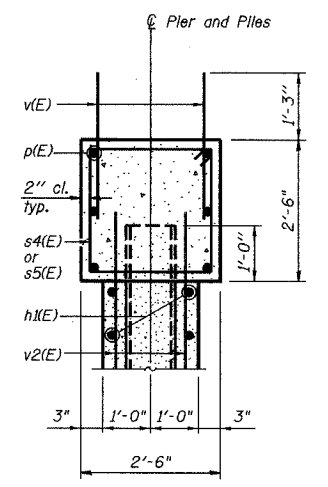
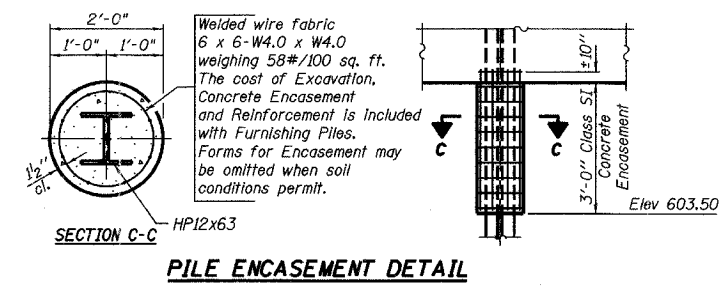
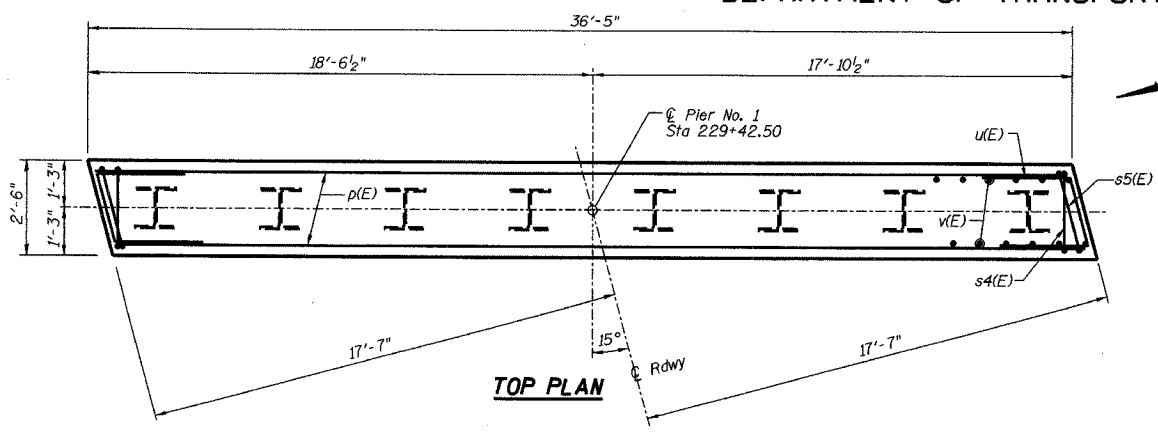


STATE OF ILLINOIS
DEPARTMENT OF TRANSPORTATION

ROUTE NO.	SECTION	COUNTY	TOTAL SHEETS	SHEET NO.
FAS 197	105BR-2	WHITESIDE	59	24
FEDERAL DISTRICT		ILLINOIS	PROJECT	
CONTRACT 64421				

PILE DATA

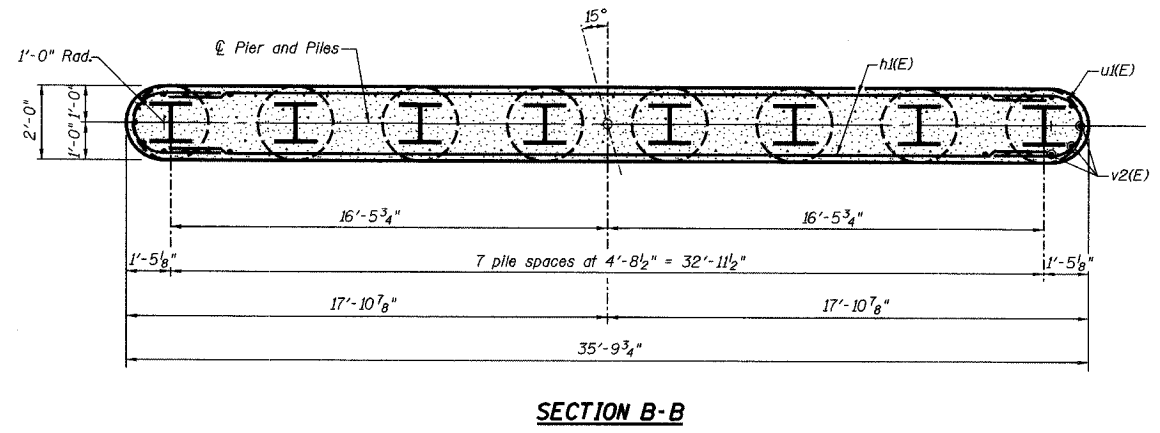
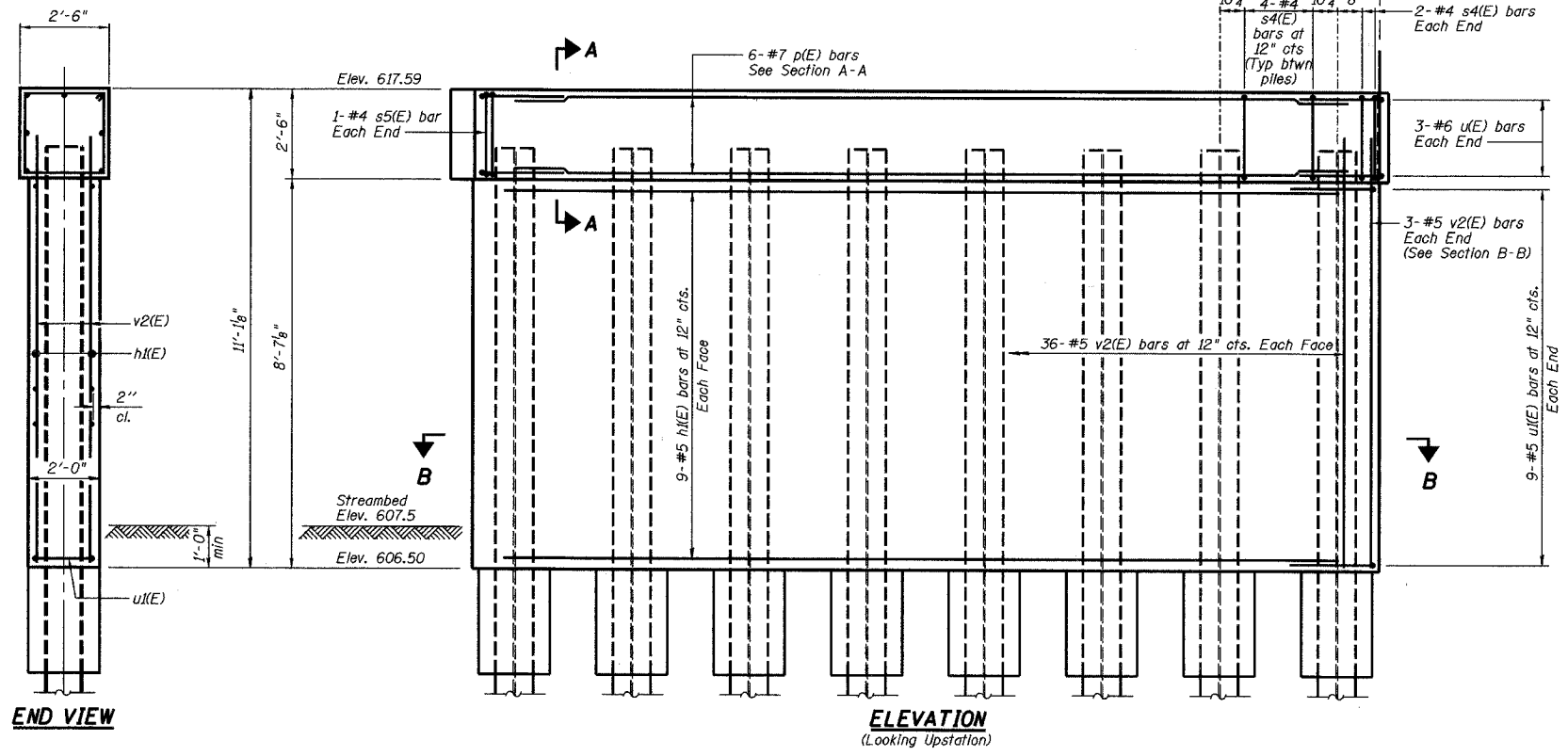
Type: HP12x63
Capacity: Driven to refusal
Est. Length: 50'
No. Required: 8



BILL OF MATERIAL

Bar	No.	Size	Length	Shape
h1(E)	18	#5	33'-0"	—
p(E)	6	#7	36'-1"	—
s4(E)	32	#4	9'-5"	□
s5(E)	2	#4	9'-7"	□
u(E)	6	#6	10'-6"	J
u1(E)	18	#5	7'-7"	J
v(E)	76	#5	3'-5"	—
v2(E)	78	#5	9'-9"	—
Structure Excavation		Cu. Yd.	42	
Concrete Structures		Cu. Yd.	31.0	
Reinforcement Bars, Epoxy Coated		Pound	2580	
Furnishing Steel Piles HP12x63		Foot	400	
Driving Steel Piles		Foot	400	
Underwater Structure Excavation Protection - Location 1		Each	1	

Reinforcement Bars designated (E) shall be epoxy coated.



REVISIONS		PIER NO. 1 DETAILS		DRAWN BY DATE	
No.	DATE	INITIALS	MOLINE ROAD OVER UNNAMED TRIBUTARY TO ROCK RIVER		R King 8/04
1			FAS ROUTE 197 SECTION 105BR-2		CHECKED BY DATE
2			STA 229+67.50 WHITESIDE COUNTY		CMW 8/04
3			HOMER L. CHASTAIN & ASSOCIATES, LLP		DATE BY DATE
4			CONSULTING ENGINEERS		CWC 8/04
5			184-001397		BOOK NUMBER
6			PROJECT No. 4858-3		
7			SHEET No.		
8					
9					
10					
11					
12					