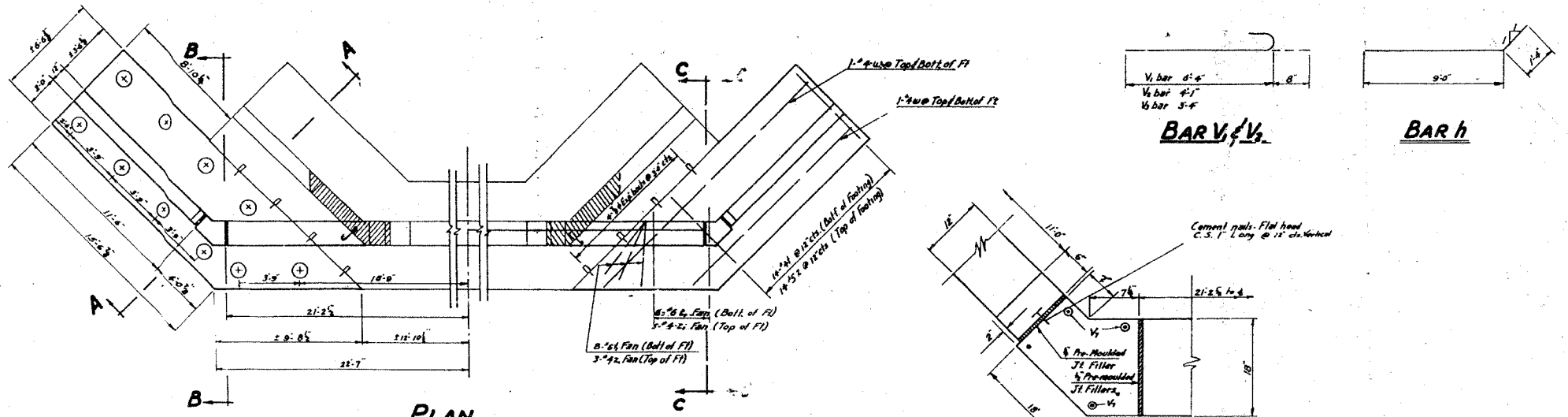
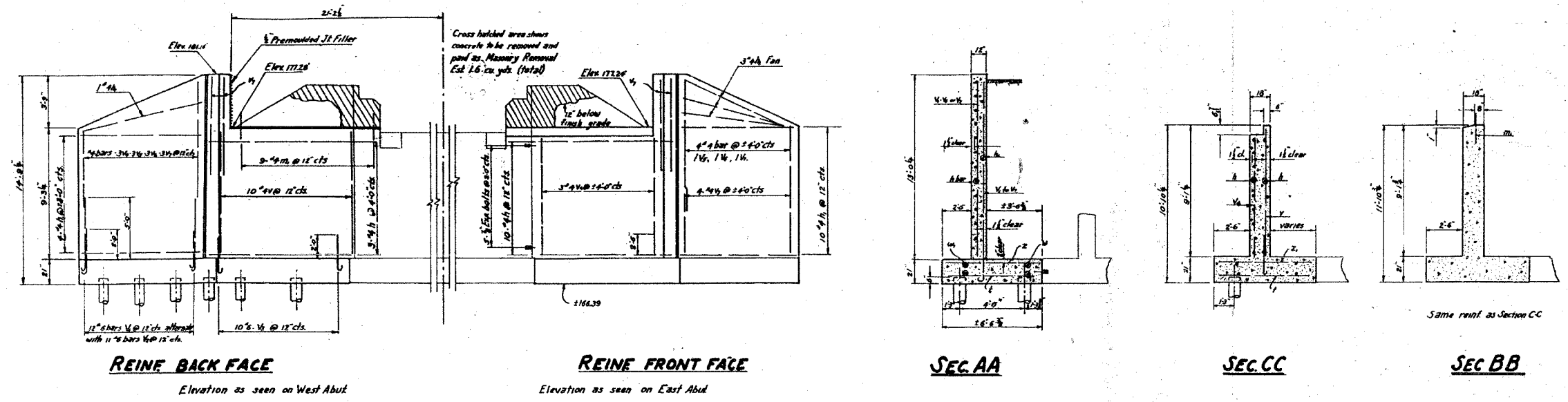


FILE NO.	SECTION	COUNTY	TOTAL SHEETS	SHEET NO.
1197	105 BR-2	WHITESIDE	59	34
STA.	TO STA.			
EXISTING CONDITIONS:				
CONTRACT 64421				

FOR INFORMATION ONLY

STATE OF ILLINOIS  
DEPARTMENT OF PUBLIC WORKS & BUILDINGS  
DIVISION OF HIGHWAYS

PROJECT NO.	SECTION	COUNTY	TOTAL SHEETS	SHEET NO.	SHEET NO. 3
S.A. 186	105 BY	Whiteside	9	8	3 SHEETS
P.A.					
FED. ROAD DIST. NO. 1	ILLINOIS	FED. AID PROJECT			



**BILL OF MATERIALS  
2 ABUTMENTS**

Bars	No.	Size	Length	Shape
V	40	4	7'-0"	—
V <sub>1</sub>	48	6	7'-0"	—
V <sub>2</sub>	48	6	4'-8"	—
V <sub>3</sub>	40	6	4'-0"	—
V <sub>4</sub>	24	4	8'-6"	—
V <sub>5</sub>	16	4	7'-6"	—
V <sub>6</sub>	18	4	6'-9"	—
V <sub>7</sub>	52	4	8'-8"	—
f	56	4	6'-3"	—
h	56	6	4'-6"	—
Z	56	5	6'-3"	—
Z <sub>1</sub>	32	4	4'-6"	—
h	52	4	10'-6"	—
h	72	4	11'-0"	—
w	8	4	18'-3"	—
w	8	4	16'-0"	—
m <sub>1</sub>	18	4	5'-0"	—
Class x Concrete				Cu yds 71.4
Reinf Bars				lbs 3950
Expansion Bolts				Each 36
Masonry Removal				Cu yds 2.0
Untreated Timber Piles Ln.Ft.				780
Test Piles				Each one

D. SIGNED: Ed. J. ...  
 CHECKED: ...  
 DR. IN: E. M. F. ...  
 C. ED. ...

EXAMINED: ...  
 PASSED: ...  
 APPROVED: ...

NAR. 4 19 55

**DETAIL OF EXPANSION BOLT**

**FILE DATA**

12' Untreated Piles  
 Est. Length 20.0  
 Min. Capacity 20 Tons  
 No. Required 40

**ABUTMENTS  
SBI RT 86 SEC 105 BY  
WHITESIDE COUNTY  
STA. 229+82**

SBI RT 86 SEC 105 BY WHITESIDE CO. DIST. 2