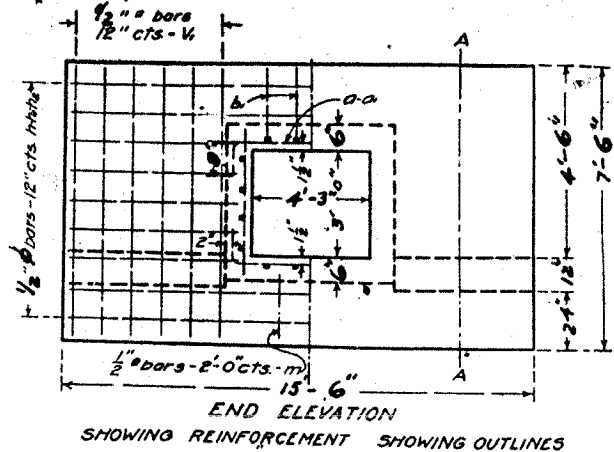


DIST. NO.	SECTION	COUNTY	TOTAL SHEETS	SHEET NO.
1197	105 BR-2	WHITESIDE	59	35
STA. TO STA.				
EXISTING CONDITIONS:				
FOR INFORMATION ONLY CONTRACT 64421				

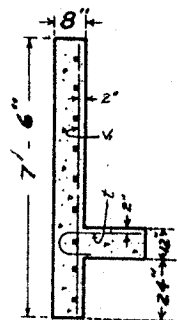
FED. ROAD DIST. NO.	STATE	FED. AID PROJ. NO.	FISCAL YEAR	SHEET NO.	TOTAL SHEETS
7	ILL	121	1928	74	93

Route 86, Section A-105 Whiteside Co



END ELEVATION  
SHOWING REINFORCEMENT SHOWING OUTLINES

ILD TOPS OF HEAD-WALLS  
LEL TO GRADE LINE.



SECTION A-A

**BILL OF MATERIAL**

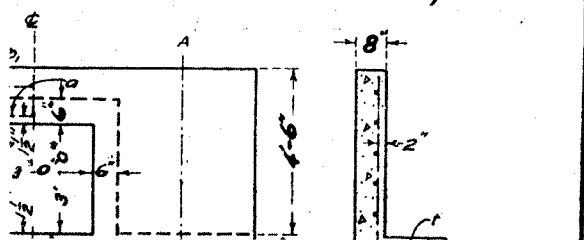
Bars	No.	Size	Length
V	186	1/2"	37.9'
V	24	1/2"	72.0'
H	6	1/2"	15.0'
H	10	1/2"	25.0'
H	10	1/2"	6.0'
a	482	1/2"	55.0'
a	28	1/2"	6.6'
b	32	1/2"	25.0'
b	20	1/2"	20.6'
l	24	1/2"	6.6'
m	2	1/2"	5.0'
Steel-Lbs.			3870
Concrete-Cu Yds.			31.6

Class A concrete to be used throughout. Proportions 1:2 1/2:4. Use 'm' bars in downstream headwall only.

Sta. 398+00  
S.A.I. Route 86 Sec. 105

FED. ROAD DIST. NO.	STATE	FED. AID PROJ. NO.	FISCAL YEAR	SHEET NO.	TOTAL SHEETS
7	ILL	121	1928	74	93

Route 86, Section A-105A  
Whiteside County

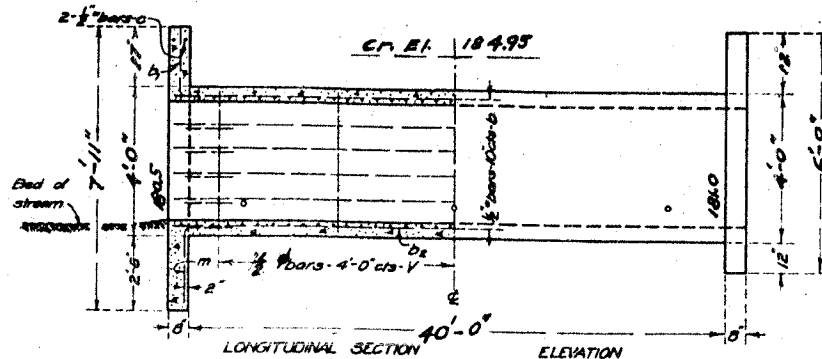


P.C. 427+50 El. 183.89  
V.C. 200' Ext 0.79  
Grades -1.60% & +1.543%

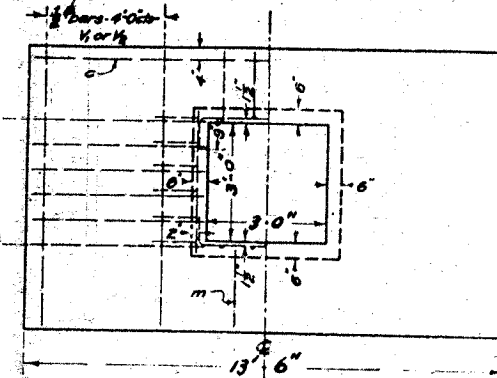
STATE OF ILLINOIS  
STATE HIGHWAY DEPARTMENT  
**REINFORCED CONCRETE BOX CULVERT**

FED. ROAD DIST. NO.	STATE	FED. AID PROJ. NO.	FISCAL YEAR	SHEET NO.	TOTAL SHEETS
7	ILL	121	1928	74	93

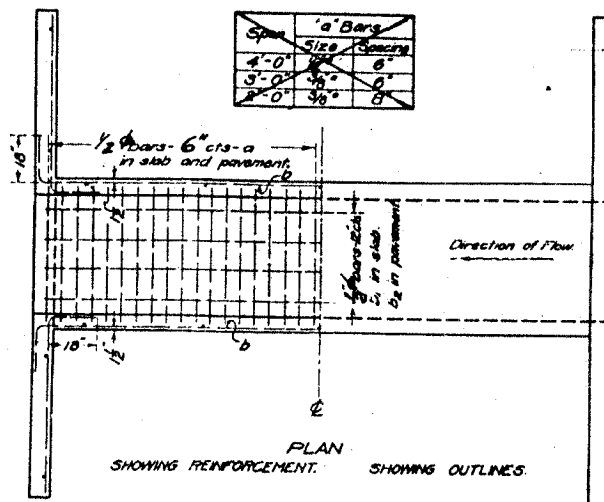
Route 86, Section A-105 Whiteside Co.



LONGITUDINAL SECTION  
ELEVATION



END ELEVATION  
SHOWING REINFORCEMENT SHOWING OUTLINES



PLAN  
SHOWING REINFORCEMENT SHOWING OUTLINES.

Note:  
Fill over box should be limited to 4'-0".  
Maximum Clearance = 4'-0"  
Use 'm' bars in downstream headwall only.

ADJUST HEIGHT OF HEAD WALLS TO BE 18 INCHES ABOVE SHOULDER ELEVATION.

BUILD TOPS OF HEAD-WALLS PARALLEL TO GRADE LINE.

**BILL OF MATERIAL**

Bars	No.	Size	Length
V	22	1/2"	37.9'
V	4	1/2"	72.6'
H	20	1/2"	6.6'
a	164	1/2"	5.0'
b	20	1/2"	23.0'
b	6	1/2"	22.6'
c	6	1/2"	21.6'
m	2	1/2"	5.0'
Steel-Lbs.			1370
Concrete-Cu Yds.			14.6

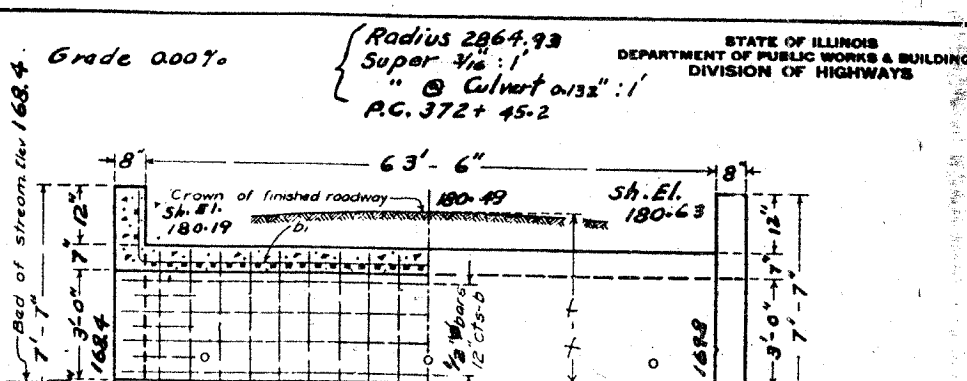
Class A concrete to be used throughout  
Proportions 1-2 1/2-4

Sta. 428+10  
Rte 86 sec. 105  
Whiteside County

STANDARD SPECIFICATIONS FOR CONSTRUCTION OF PUBLIC WORKS  
DIVISION OF HIGHWAYS  
APPROVED  
H. H. Pender  
CHIEF ENGINEER  
PASSED  
W. H. Pender  
SUPERVISOR OF DESIGN

11-11-12

618



FED. ROAD DIST. NO.	STATE	FED. AID PROJ. NO.	FISCAL YEAR	SHEET NO.	TOTAL SHEETS
7	ILL	121	1928	74	93

Route 86, Section A-105 Whiteside Co.

