

DEPARTMENT OF TRANSPORTATION
DIVISION OF HIGHWAYS

**PROPOSED
HIGHWAY PLANS**

ROUTE FAS 1252 (IL 29)

SECTION (R4)CR-3

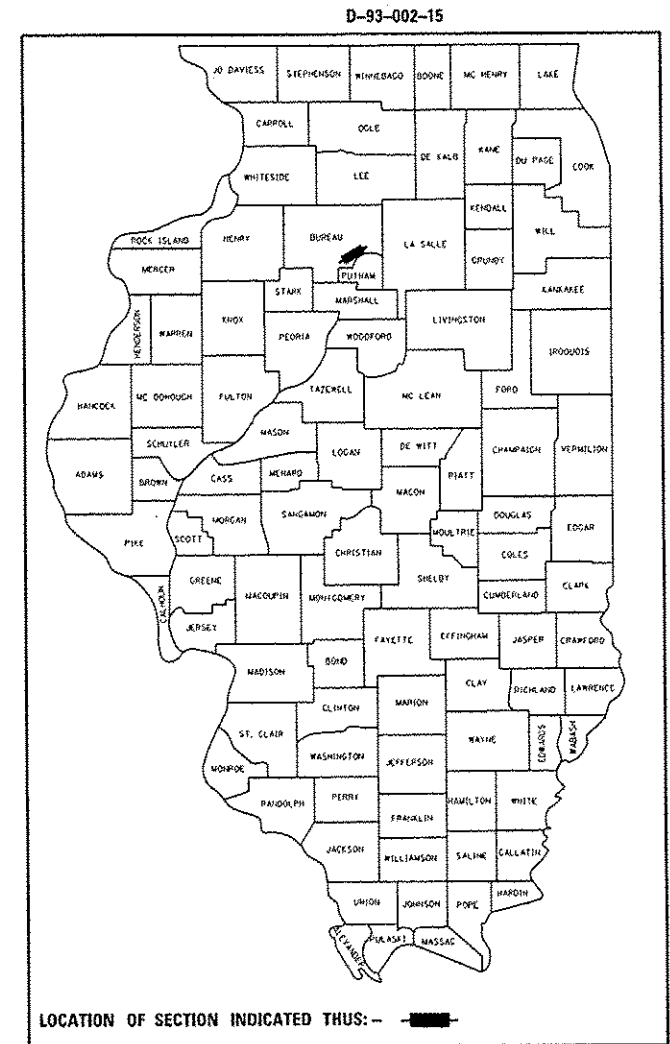
BOX CULVERT REMOVAL & REPLACEMENT

BUREAU COUNTY

C-93-123-15

PROJECT LOCATION

EXISTING STRUCTURE NO. 006-2539
PROPOSED STRUCTURE NO. 006-2595
0.1 MI. WEST OF DEPUE ROAD



RURAL
MAJOR COLLECTOR
FAS 1252 (IL 29)
2013

ADT	1050
P.V.	96.29%
S.U.	1.90%
M.U.	1.81%

STATE OF ILLINOIS
DEPARTMENT OF TRANSPORTATION
DIVISION OF HIGHWAYS

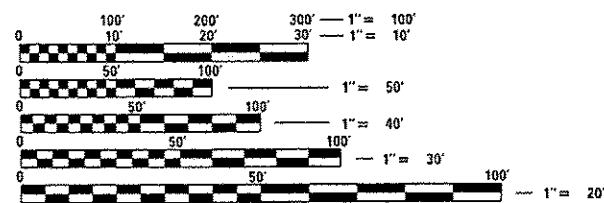
SUBMITTED *Feb. 5 2016*
Paul Coetzee
DEPUTY DIRECTOR OF HIGHWAYS, REGION ENGINEER
March 10 2016
Mawoon M. Addis PE
ENGINEER OF DESIGN AND ENVIRONMENT
March 10 2016
Cher Osman PE
DIRECTOR OF HIGHWAYS, CHIEF ENGINEER

**PRINTED BY THE AUTHORITY
OF THE STATE OF ILLINOIS**

- INDEX OF SHEETS**
- COVER SHEET
 - GENERAL NOTES
 5. SUMMARY OF QUANTITIES
 - TYPICAL SECTIONS
 - SCHEDULES
 - PRE-STAGE CONSTRUCTION DETAILS
 - TRAFFIC CONTROL AND PROTECTION, STANDARD 701321-STAGE I
 - TRAFFIC CONTROL AND PROTECTION, STANDARD 701321-STAGE I
 - MISCELLANEOUS DETAILS
 - SITE PLAN
 - PLAN AND ELEVATION FOR STRUCTURE NO. 006-2535
 16. BOX CULVERT DETAILS FOR STRUCTURE NO. 006-2595
 18. ROCK FILL/SLOPE MATRESS DETAILS
 19. CLASS B PATCHING DETAILS

STANDARDS

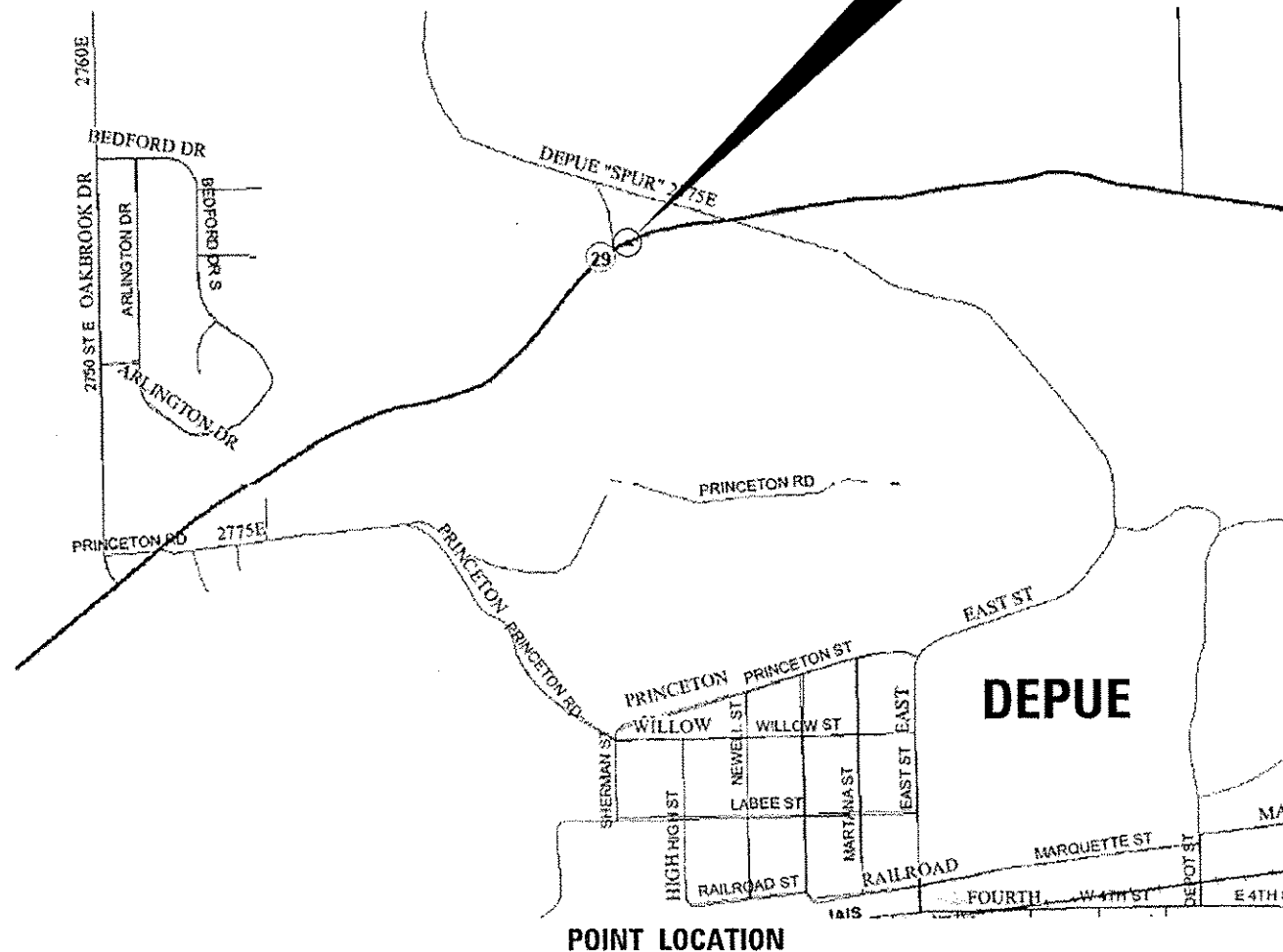
- | | |
|-----------|--|
| 000001-06 | STANDARD SYMBOLS, ABBREVIATIONS AND PATTERNS |
| 001001-02 | AREAS OF REINFORCEMENT BARS |
| 001006 | DECIMAL OF AN INCH AND OF A FOOT |
| 280001-07 | TEMPORARY EROSION CONTROL SYSTEMS |
| 420001-08 | PAVEMENT JOINTS |
| 442101-07 | CLASS B PATCHES |
| 630001-10 | STEEL PLATE BEAM GUARDRAIL |
| 630101-09 | GUARDRAIL MOUNTED ON EXISTING CULVERTS |
| 701001-02 | OFF-ROAD OPERATIONS 2L, 2W, MORE THAN 15' (4.5 m) AWAY |
| 701006-05 | OFF-ROAD OPERATIONS 2L, 2W, 15' (4.5 m) TO 24" (600 mm) FROM PAVEMENT EDGE |
| 701201-04 | LANE CLOSURE, 2L, 2W, DAY ONLY, FOR SPEEDS ≥ 45 MPH |
| 701206-03 | LANE CLOSURE, 2L, 2W, NIGHT ONLY, FOR SPEEDS ≥ 45 MPH |
| 701301-04 | LANE CLOSURE, 2L, 2W, SHORT TIME OPERATIONS |
| 701311-03 | LANE CLOSURE, 2L, 2W, MOVING OPERATIONS - DAY ONLY |
| 701321-15 | LANE CLOSURE, 2L, 2W, BRIDGE REPAIR WITH BARRIER |
| 701901-05 | TRAFFIC CONTROL DEVICES |
| 704001-08 | TEMPORARY CONCRETE BARRIER |



FULL SIZE PLANS HAVE BEEN PREPARED USING STANDARD ENGINEERING SCALES. REDUCED SIZED PLANS WILL NOT CONFORM TO STANDARD SCALES. IN MAKING MEASUREMENTS ON REDUCED PLANS, THE ABOVE SCALES MAY BE USED.

J.U.L.I.E.
JOINT UTILITY LOCATION INFORMATION FOR EXCAVATION
1-800-892-0123
OR 811

PROJECT ENGINEER: JOE KANNEL P.E.
UNIT CHIEF: RON WOODSHANK
TOWNSHIP: SELBY
CONTRACT NO. 66E91



GENERAL NOTES

PLAN DIMENSIONS AND DETAILS RELATIVE TO EXISTING PLANS ARE SUBJECT TO NOMINAL CONSTRUCTION VARIATIONS. THE CONTRACTOR SHALL FIELD VERIFY EXISTING DIMENSIONS AND DETAILS AFFECTING NEW CONSTRUCTION AND MAKE NECESSARY APPROVED ADJUSTMENTS PRIOR TO CONSTRUCTION OR ORDERING OF MATERIALS. SUCH VARIATIONS SHALL NOT BE CAUSE FOR ADDITIONAL COMPENSATION FOR A CHANGE IN SCOPE OF WORK; HOWEVER, THE CONTRACTOR WILL BE PAID FOR THE QUANTITY ACTUALLY FURNISHED AT THE UNIT PRICE BID FOR THE WORK.

ALL EXCAVATED MATERIAL, WHICH INCLUDES DIGGING OR GRADING OF ANY SOIL OR FILL MATERIAL, WITH THE EXCEPTION OF AGGREGATE FILLS, MUST BE INCORPORATED WITHIN THE IDOT RIGHT OF WAY DUE TO ENVIRONMENTAL DOCUMENTATION REQUIREMENTS.

ALL ELEVATIONS REFERRING TO U.S.G.S. MEAN SEA LEVEL DATUM.

ABANDONED UNDERGROUND UTILITIES THAT CONFLICT WITH CONSTRUCTION SHALL BE DISPOSED OF OUTSIDE THE LIMITS OF THE RIGHT OF WAY ACCORDING TO ARTICLE 202.03 OF THE STANDARD SPECIFICATIONS AND AS DIRECTED BY THE ENGINEER. THIS WORK WILL NOT BE PAID FOR SEPARATELY, BUT WILL BE INCLUDED IN THE COST OF EARTH EXCAVATION.

ANY REFERENCE TO A STANDARD IN THESE PLANS SHALL BE INTERPRETED TO MEAN THE EDITION AS INDICATED BY THE SUBNUMBER SHOWN IN THE LIST OF STANDARDS OR THE COPY INCLUDED IN THESE PLANS.

THE CONTRACTOR SHALL CONTACT JULIE AT LEAST 48 HOURS PRIOR TO EXCAVATION TO DETERMINE WHICH UTILITIES ARE IN THE AREA.

PERIMETER EROSION BARRIER SHALL BE INSTALLED AT LOCATIONS SHOWN ON THE PLANS OR AS DIRECTED BY THE ENGINEER.

COMMITMENTS

STATE OF ILLINOIS
DEPARTMENT OF TRANSPORTATION
DISTRICT THREE
AS BUILT INFORMATION

SUPERVISING CONSTRUCTION FIELD ENGINEER

RESIDENT ENGINEER / TECHNICIAN

START & END DATES
OF CONSTRUCTION:

INSPECTORS:

DATE: February 5, 2016

PREPARED BY: Tom Benoit
DISTRICT STUDIES & PLANS ENGINEER

EXAMINED BY: David [Signature]
DISTRICT CONSTRUCTION ENGINEER

[Signature]
DISTRICT MATERIALS ENGINEER

Bruce A. Anderson [Signature]
DISTRICT OPERATIONS ENGINEER

STATE OF ILLINOIS
DEPARTMENT OF TRANSPORTATION

GENERAL NOTES

FILE NAME =	USER NAME = woodshankr1	DESIGNED - RW	REVISED -	STATE OF ILLINOIS DEPARTMENT OF TRANSPORTATION	GENERAL NOTES	F.A.S. RTE.	SECTION	COUNTY	TOTAL SHEETS	SHEET NO.	
p:\NLRB\REGIONTEG\illinois.gov\PI001\Documents\IDOT Office\District 3\Projects\036	EDRAWN\data\036\RW\sh-t-details.dgn	CHECKED - EP	REVISED -			1252	(R4)CR-3	BUREAU	19	2	
PLOT SCALE = 100.0000 1 / in.	DATE - 10/23/2015					CONTRACT NO. 66E91		ILLINOIS FED. AID PROJECT			
Default	PLOT DATE = 2/1/2016					SCALE:	SHEET 1	OF 1	SHEETS	STA.	TO STA.

CODE NO.	ITEM	UNIT	TOTAL QUANTITY	CONSTR. CODE
				DE MISCELLANEOUS 100% STATE BOX CULVERT 0040 S. N. 006-2595
20200600	EXCAVATING AND GRADING EXISTING SHOULDER	UNIT	6.4	6.4
20400800	FURNISHED EXCAVATION	CU YD	50	50
21001000	GEOTECHNICAL FABRIC FOR GROUND STABILIZATION	SO YD	130	130
28000400	PERIMETER EROSION BARRIER	FOOT	300	300
28401000	SLOPE MATTRESS 12"	SO YD	64	64
28401600	SLOPE MATTRESS 18"	SO YD	2	2
28401700	SLOPE MATTRESS 24"	SO YD	6	6
31101400	SUBBASE GRANULAR MATERIAL, TYPE B 6"	SO YD	213	213
44201025	CLASS B PATCHES, TYPE IV, 14 INCH	SO YD	107	107
44201299	DOWEL BARS 1 1/2"	EACH	40	40
44213200	SAW CUTS	FOOT	112	112
44213204	TIE BARS 3/4"	EACH	16	16
48101200	AGGREGATE SHOULDERS, TYPE B	TON	30	30
48203037	HOT-MIX ASPHALT SHOULDERS, 10"	SO YD	456	456

14

CODE NO.	ITEM	UNIT	TOTAL QUANTITY	CONSTR. CODE
				DE MISCELLANEOUS
				100% STATE
				BOX CULVERT
				0040
				S.N. 006-2595
50100300	REMOVAL OF EXISTING STRUCTURES NO. 1	EACH	1	1
50100400	REMOVAL OF EXISTING STRUCTURES NO. 2	EACH	1	1
50200100	STRUCTURE EXCAVATION	CU YD	330	330
50800205	REINFORCEMENT BARS, EPOXY COATED	POUND	7400	7400
50800530	MECHANICAL SPLICERS	EACH	33	33
54003000	CONCRETE BOX CULVERTS	CU YD	40	40
63301210	REMOVE AND REERECT STEEL PLATE BEAM GUARDRAIL, TYPE A	FOOT	150	150
67100100	MOBILIZATION	LSUM	1	1
70100405	TRAFFIC CONTROL AND PROTECTION, STANDARD 701321	EACH	1	1
70106500	TEMPORARY BRIDGE TRAFFIC SIGNALS	EACH	1	1
70300220	TEMPORARY PAVEMENT MARKING - LINE 4"	FOOT	1378	1378
70300280	TEMPORARY PAVEMENT MARKING - LINE 24"	FOOT	24	24
70301000	WORK ZONE PAVEMENT MARKING REMOVAL	SO FT	455	455
70400100	TEMPORARY CONCRETE BARRIER	FOOT	620	620

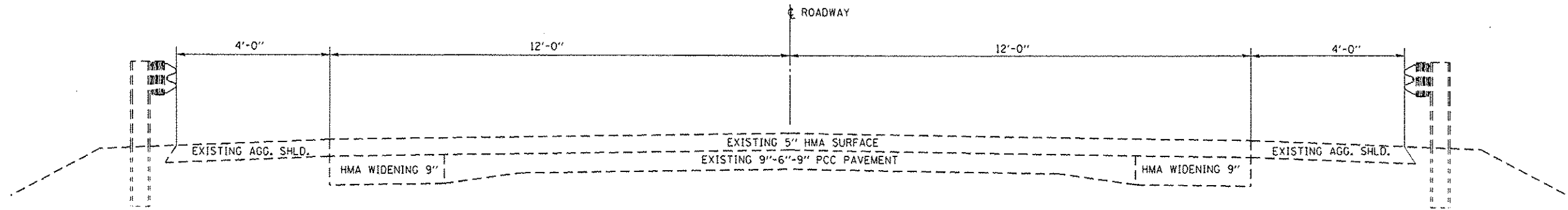
14

*SPECIALITY ITEMS

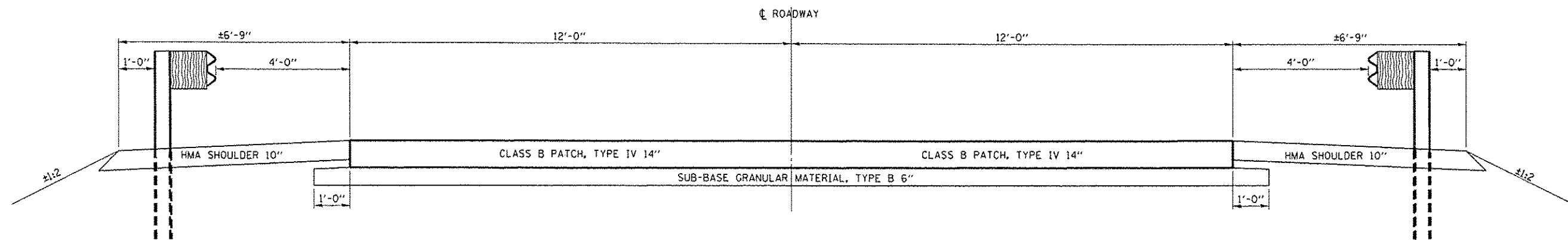
FILE NAME *	USER NAME * woodshark-1	DESIGNED - RW	REVISED -	STATE OF ILLINOIS DEPARTMENT OF TRANSPORTATION	SUMMARY OF QUANTITIES	RTE.	SECTION	COUNTY	TOTAL SHEETS	SHEET NO.
o:\1\1084EBIDINTEG\Illinois.gov\PI001\Documents\1001\Office\District 3\Projects\0303\DRAWING\0303RW\shd_details.dgn	DRAWN	0303RW	shd_details.dgn			1252	(R4)CR-3	BUREAU	19	4
PLOT SCALE * 1/8"=1'-0"	CHECKED - EP	REVISED -	REVISED -			CONTRACT NO. 66E91				
PLOT DATE * 2/1/2016	DATE - 10/23/2015	REVISED -	REVISED -			[ILLINOIS] FED. AID PROJECT				
Default:				SCALE:	SHEET 2 OF 4 SHEETS	STA.	TO STA.			

CODE NO.	ITEM	UNIT	TOTAL QUANTITY	CONSTR. CODE
				DE MISCELLANEOUS 100% STATE BOX CULVERT 0040 S. N. 006-2595
70400200	RELOCATE TEMPORARY CONCRETE BARRIER	FOOT	1378	1378
70600251	IMPACT ATTENUATORS, TEMPORARY (NON- REDIRECTIVE, NARROW), TEST LEVEL 3	EACH	4	4
70600352	IMPACT ATTENUATORS, RELOCATE (NON- REDIRECTIVE, NARROW), TEST LEVEL 3	EACH	2	2
* 78009004	MODIFIED URETHANE PAVEMENT MARKING - LINE 4"	FOOT	2314	2314
78300100	PAVEMENT MARKING REMOVAL	SQ FT	620	620
X5860110	GRANULAR BACKFILL FOR STRUCTURES	CU YD	230	230
* X6330103	REMOVE AND RE-ERECT TRAFFIC BARRIER TERMINAL, TYPE 1 SPECIAL, TANGENT	EACH	4	4
X7040125	PINNING TEMPORARY CONCRETE BARRIER	EACH	102	102
X7200201	WIDTH RESTRICTION SIGNING	LSUM	1	1
Z0030850	TEMPORARY INFORMATION SIGNING	SQ FT	48	48
* Z0054404	ROCK FILL - EMBANKMENT	CU YD	10	10
* Z0054406	ROCK FILL - FOUNDATION	CU YD	40	40
Z0058668	GRADING AND SHAPING FORESLOPES	SO YD	245	245

* SPECIALTY ITEM



EXISTING TYPICAL SECTION
STA. 67 + 86.00



PROPOSED TYPICAL SECTION
STA. 67 + 86.00

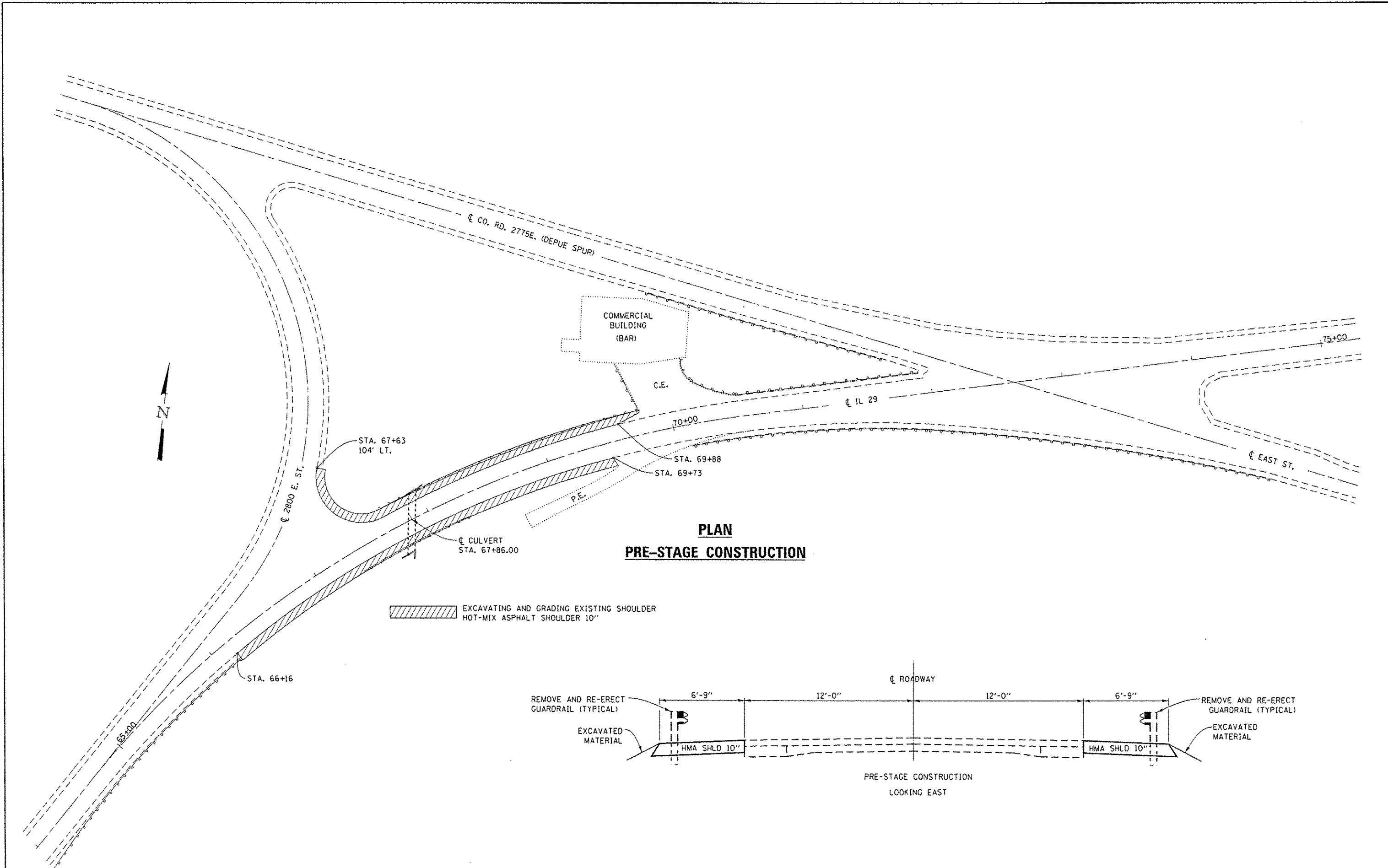
HMA MIXTURE REQUIREMENT TABLE		
LOCATION(S):	HMA SHOULDERS	
	BOTTOM LIFT(S)	TOP LIFT (2")
MIXTURE USE(S):	BINDER	SURFACE
BINDER GRADE (PG):	PG64-22	PG64-22
DESIGN AIR VOIDS:	4.0% @ N50	4.0% @ N50
MIXTURE COMPOSITION: (MIXTURE GRADATION)	IL 19.0	
FRICTION AGGREGATE:		C
MIXTURE WEIGHT:	112 LB/SY/IN	112 LB/SY/IN
QUALITY MANAGEMENT PROGRAM:	QC/OA	QC/OA
SUBLOT SIZE:	N/A	N/A
DENSITY TEST METHOD:	CORES	CORES

SCHEDULE - PAVEMENT MARKING

LOCATION	PAVEMENT MARKING REMOVAL	TEMPORARY PAVEMENT LINE 4"	TEMPORARY PAVEMENT LINE 24"	WORK ZONE PAVEMENT MARKING REMOVAL	MODIFIED URETHANE PAVEMENT MARKING LINE 4"	
	SO FT	FOOT	FOOT	SO FT	YELLOW	WHITE
STAGE I	530	626	24	207		605
STAGE II	90	752		248	1276	433
SUBTOTAL					1276	1038
TOTAL	620	1378	24	455	2314	

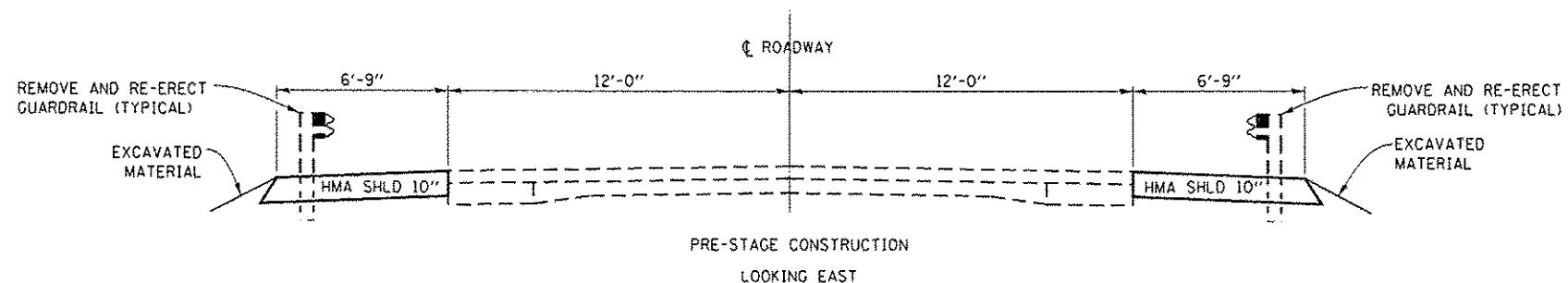
SCHEDULE - TEMPORARY CONCRETE BARRIER

LOCATION	TEMPORARY CONCRETE BARRIER	RELOCATE TEMPORARY CONCRETE BARRIER	PINNING TEMPORARY CONCRETE BARRIER
	SO FT	FOOT	FOOT
STAGE I	530	626	75
STAGE II	90	752	27
SUBTOTAL			
TOTAL	620	1378	102

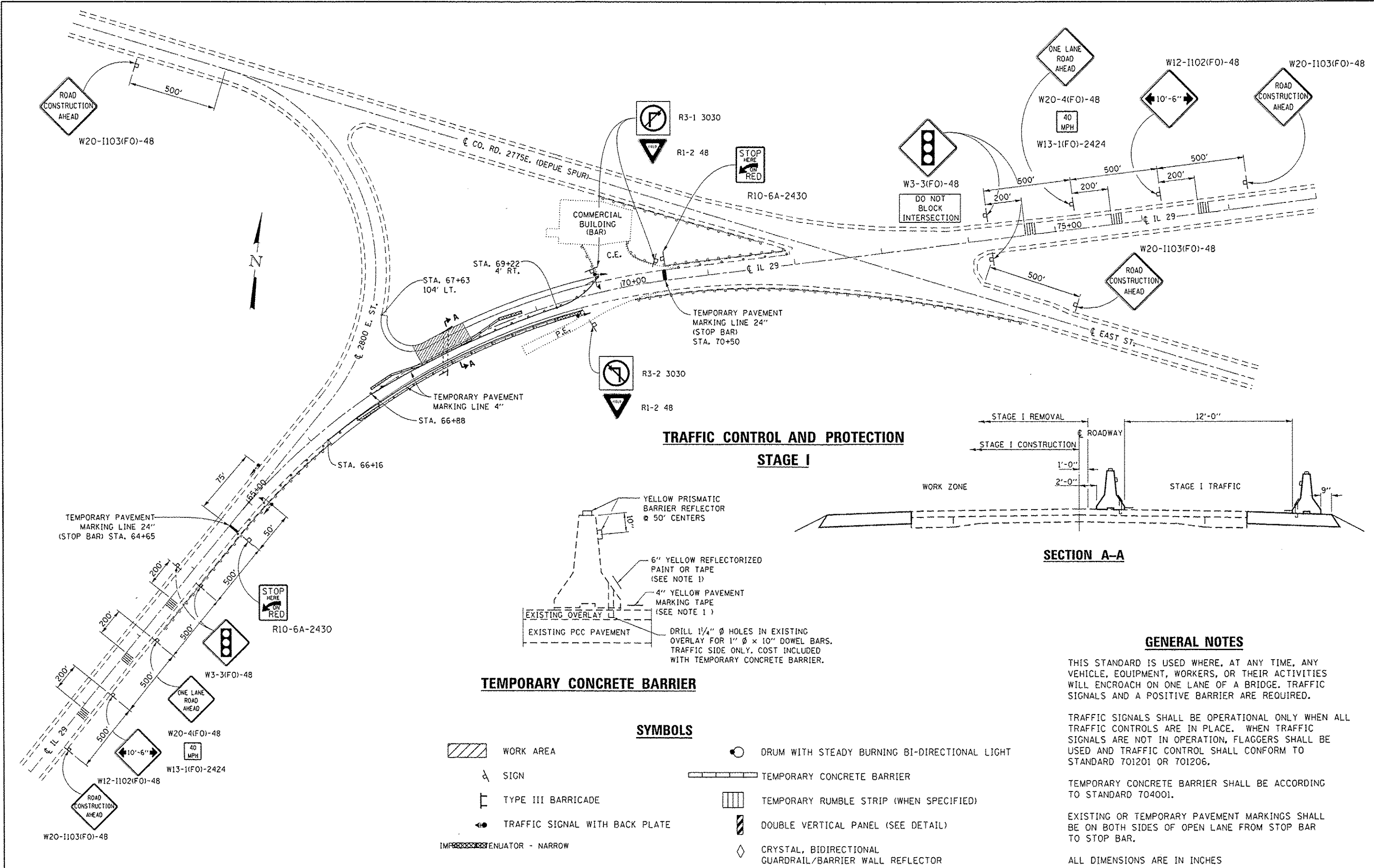


**PLAN
PRE-STAGE CONSTRUCTION**

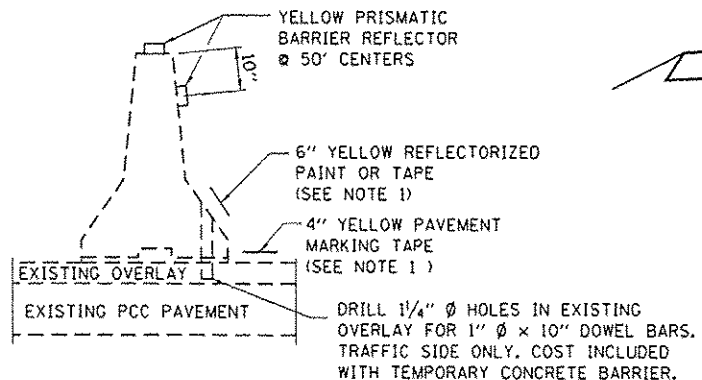
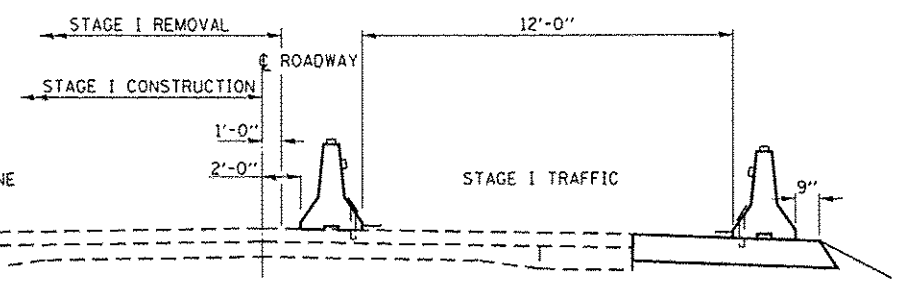
EXCAVATING AND GRADING EXISTING SHOULDER
HOT-MIX ASPHALT SHOULDER 10"



FILE NAME p:\11084EB\INTEG\Illinois.gov\PI\DOT\Documents\DOT Offices\District 3\Projects\036\DRAWN\036RW1-shd-details.dgn	USER NAME woodshankr1	DESIGNED - RW	REVISED -	STATE OF ILLINOIS DEPARTMENT OF TRANSPORTATION	PRE-STAGE CONSTRUCTION DETAILS	F.A.S. RTE. 1252	SECTION (R4)CR-3	COUNTY BUREAU	TOTAL SHEETS 19	SHEET NO. 8
	PLOT SCALE 1/8" = 1'-0"	CHECKED - EP	REVISED -			SCALE	SHEET 1 OF 1 SHEETS	STA. TO STA.	CONTRACT NO. 66E91 ILLINOIS FED. AID PROJECT	
Default	PLOT DATE 2/1/2016	DATE 10/23/2015	REVISED -							



**TRAFFIC CONTROL AND PROTECTION
STAGE I**



TEMPORARY CONCRETE BARRIER

SYMBOLS

- WORK AREA
- SIGN
- TYPE III BARRICADE
- DRUM WITH STEADY BURNING BI-DIRECTIONAL LIGHT
- TEMPORARY CONCRETE BARRIER
- TEMPORARY RUMBLE STRIP (WHEN SPECIFIED)
- DOUBLE VERTICAL PANEL (SEE DETAIL)
- CRYSTAL, BIDIRECTIONAL GUARDRAIL/BARRIER WALL REFLECTOR
- IMPERMEABLE ATTENUATOR - NARROW

GENERAL NOTES

THIS STANDARD IS USED WHERE, AT ANY TIME, ANY VEHICLE, EQUIPMENT, WORKERS, OR THEIR ACTIVITIES WILL ENCOACH ON ONE LANE OF A BRIDGE. TRAFFIC SIGNALS AND A POSITIVE BARRIER ARE REQUIRED.

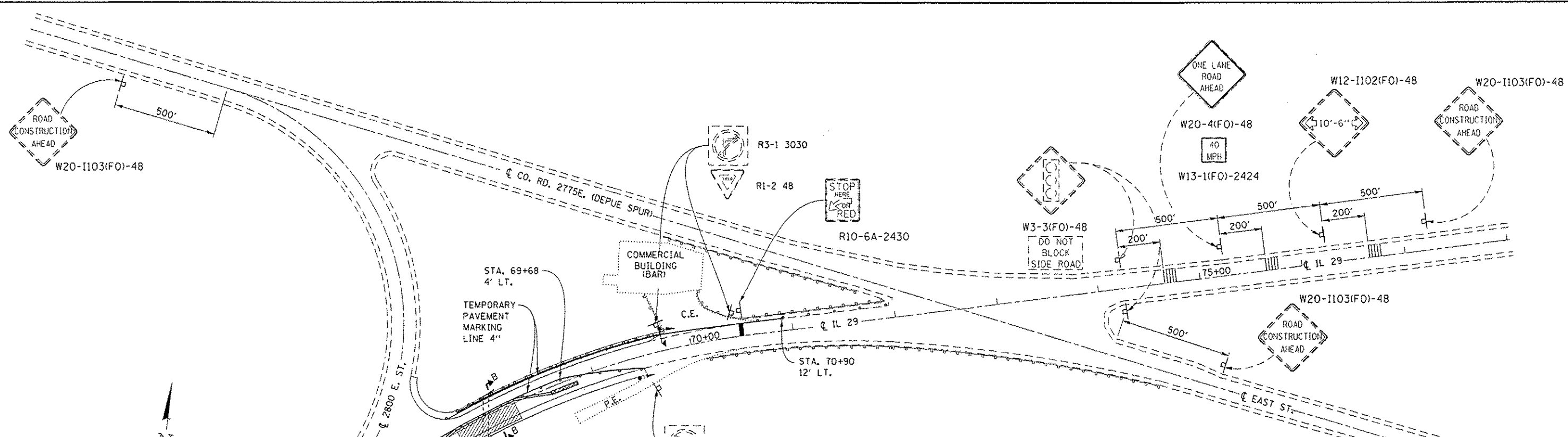
TRAFFIC SIGNALS SHALL BE OPERATIONAL ONLY WHEN ALL TRAFFIC CONTROLS ARE IN PLACE. WHEN TRAFFIC SIGNALS ARE NOT IN OPERATION, FLAGGERS SHALL BE USED AND TRAFFIC CONTROL SHALL CONFORM TO STANDARD 701201 OR 701206.

TEMPORARY CONCRETE BARRIER SHALL BE ACCORDING TO STANDARD 704001.

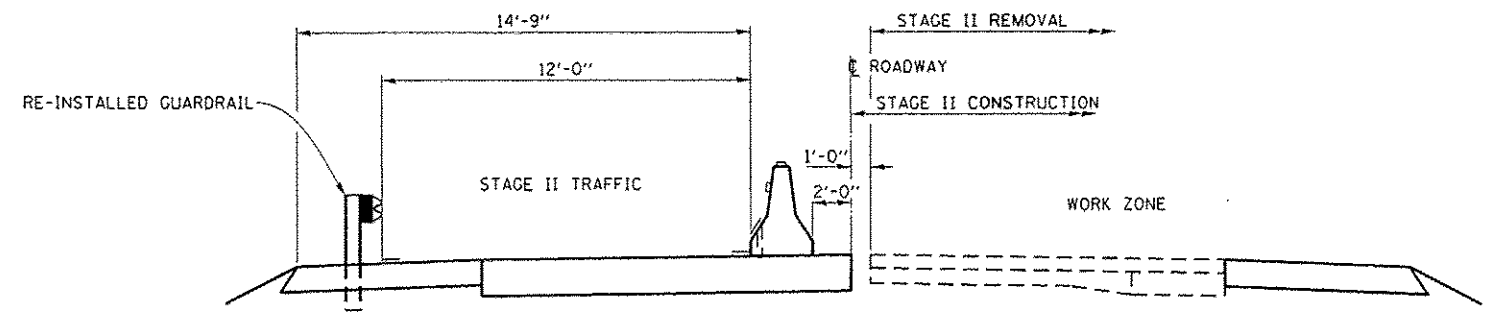
EXISTING OR TEMPORARY PAVEMENT MARKINGS SHALL BE ON BOTH SIDES OF OPEN LANE FROM STOP BAR TO STOP BAR.

ALL DIMENSIONS ARE IN INCHES

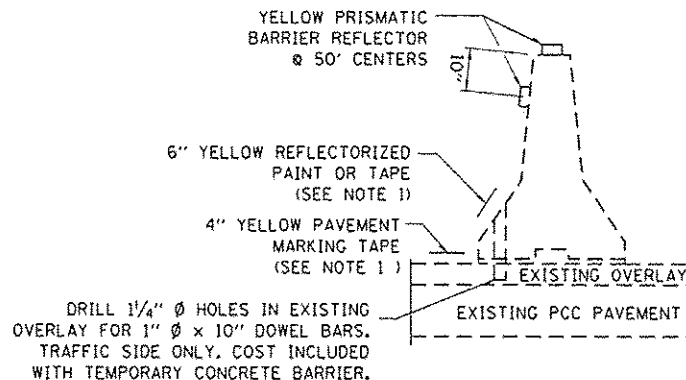
FILE NAME =	USER NAME = woodshank1	DESIGNED - RW	REVISED -	STATE OF ILLINOIS DEPARTMENT OF TRANSPORTATION	TRAFFIC CONTROL AND PROTECTION STANDARD 701321 - STAGE I	F.A.S. RTE.	SECTION	COUNTY	TOTAL SHEETS	SHEET NO.	
PROJECT =	PROJECT OFFICE =	DRAWN =	REVISED -			1252	(R4)CR-3	BUREAU	18	9	
PLOT SCALE = 1/8" = 1' / in.	CHECKED - EP	REVISED -	DATE - 10/23/2015			SCALE:	SHEET 1 OF 1 SHEETS	STA.	TO STA.	CONTRACT NO. 66E91	ILLINOIS FED. AID PROJECT
PLOT DATE = 2/1/2016	DATE - 10/23/2015	REVISED -									



**TRAFFIC CONTROL AND PROTECTION
STAGE II**



SECTION B-B



TEMPORARY CONCRETE BARRIER

SYMBOLS

- WORK AREA
- SIGN
- TYPE III BARRICADE
- TRAFFIC SIGNAL WITH BACK PLATE
- DRUM WITH STEADY BURNING BI-DIRECTIONAL LIGHT
- TEMPORARY CONCRETE BARRIER
- TEMPORARY RUMBLE STRIP (WHEN SPECIFIED)
- DOUBLE VERTICAL PANEL (SEE DETAIL)
- CRYSTAL, BIDIRECTIONAL GUARDRAIL/BARRIER WALL REFLECTOR

GENERAL NOTES

THIS STANDARD IS USED WHERE, AT ANY TIME, ANY VEHICLE, EQUIPMENT, WORKERS, OR THEIR ACTIVITIES WILL ENCROACH ON ONE LANE OF A BRIDGE. TRAFFIC SIGNALS AND A POSITIVE BARRIER ARE REQUIRED.

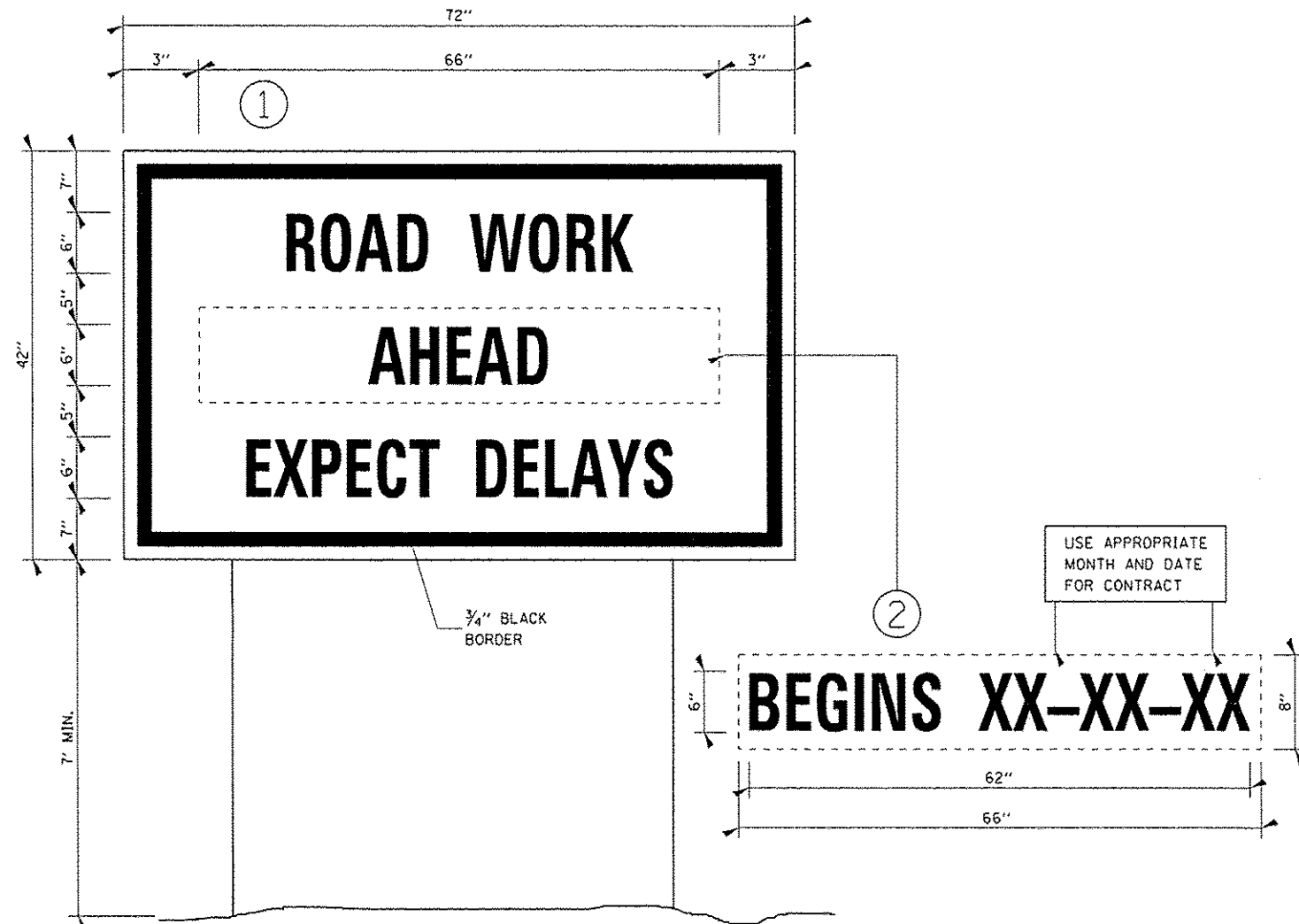
TRAFFIC SIGNALS SHALL BE OPERATIONAL ONLY WHEN ALL TRAFFIC CONTROLS ARE IN PLACE. WHEN TRAFFIC SIGNALS ARE NOT IN OPERATION, FLAGGERS SHALL BE USED AND TRAFFIC CONTROL SHALL CONFORM TO STANDARD 701201 OR 701206.

TEMPORARY CONCRETE BARRIER SHALL BE ACCORDING TO STANDARD 704001.

EXISTING OR TEMPORARY PAVEMENT MARKINGS SHALL BE ON BOTH SIDES OF OPEN LANE FROM STOP BAR TO STOP BAR.

ALL DIMENSIONS ARE IN INCHES

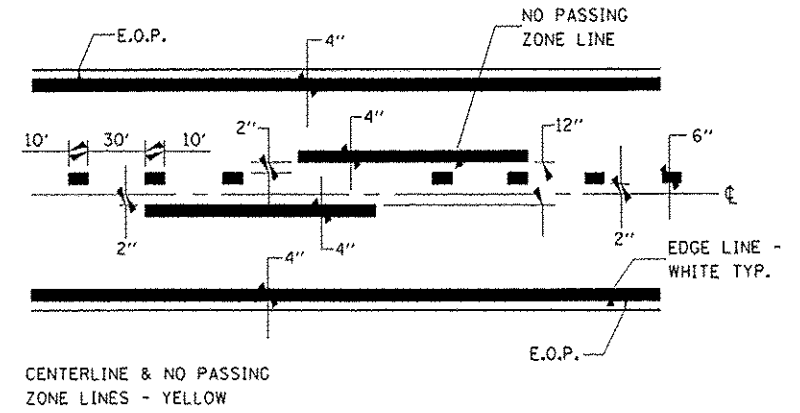
FILE NAME	USER NAME	DESIGNED - RW	REVISED -	STATE OF ILLINOIS DEPARTMENT OF TRANSPORTATION	TRAFFIC CONTROL AND PROTECTION STANDARD 701321 - STAGE II	F.A.S. RTE.	SECTION	COUNTY	TOTAL SHEETS	SHEET NO.	
PROJECT	PROJECT	CHECKED - EP	REVISED -			1252	(R4)CR-3	BUREAU	19	10	
PLOT SCALE	DATE	DATE	DATE			CONTRACT NO. 66E91					
PLOT DATE	DATE	DATE	DATE			ILLINOIS FED. AID PROJECT					



TEMPORARY INFORMATION SIGNING

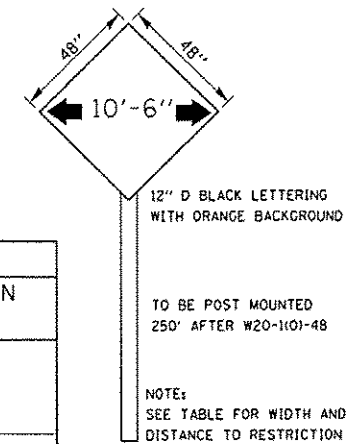
NOTES:

1. USE 6" D BLACK LETTERING ON FLOURESENT ORANGE BACKGROUND.
2. ERECT SIGNS AT LOCATIONS IN ADVANCE OF THE "ROAD CONSTRUCTION AHEAD" SIGNS AS DIRECTED BY THE ENGINEER.
3. ERECT SIGN ① WITH INSTALLED PANEL ② A MINIMUM OF ONE WEEK PRIOR TO THE START OF THE LANE CLOSURE.
4. REMOVE PANEL ② ON THAT DATE.
5. SEE SPECIAL PROVISION "TEMPORARY INFORMATION SIGNING" FOR ADDITIONAL INFORMATION.
6. WILL BE PAID FOR PER SQ FT AS "TEMPORARY INFORMATION SIGNING". EACH SIGN = 21 SQ FT AND THE DATE PANEL ② WILL NOT BE MEASURED SEPARATELY FOR PAYMENT.



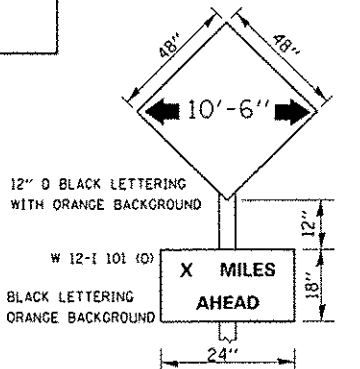
PAVEMENT MARKING

TABLE OF WIDTH RESTRICTION SIGNS			
NO. OF SIGNS	TYPE OF SIGN	LOCATION	WIDTH RESTRICTION & MILES AHEAD
1	WIDTH RESTRICTION WITH W12-1101(O)	US ROUTE 6 WB AT INTERSECTION IL ROUTE 29	10'-6" 5 MILES AHEAD
1	WIDTH RESTRICTION WITH W12-1101(O)	IL ROUTE 29 NB AT INTERSECTION IL ROUTE 26	10'-6" 4.2 MILES AHEAD



NOTE:
THE CONTRACTOR SHALL FURNISH ERECT AND MAINTAIN THE ABOVE SIGNS.

THE CONTRACTOR SHALL NOTIFY THE BUREAU OF OPERATIONS, MR. BOB ETZENBACH, PHONE (815) 434-8511 THREE WEEKS PRIOR TO STAGE CONSTRUCTION.



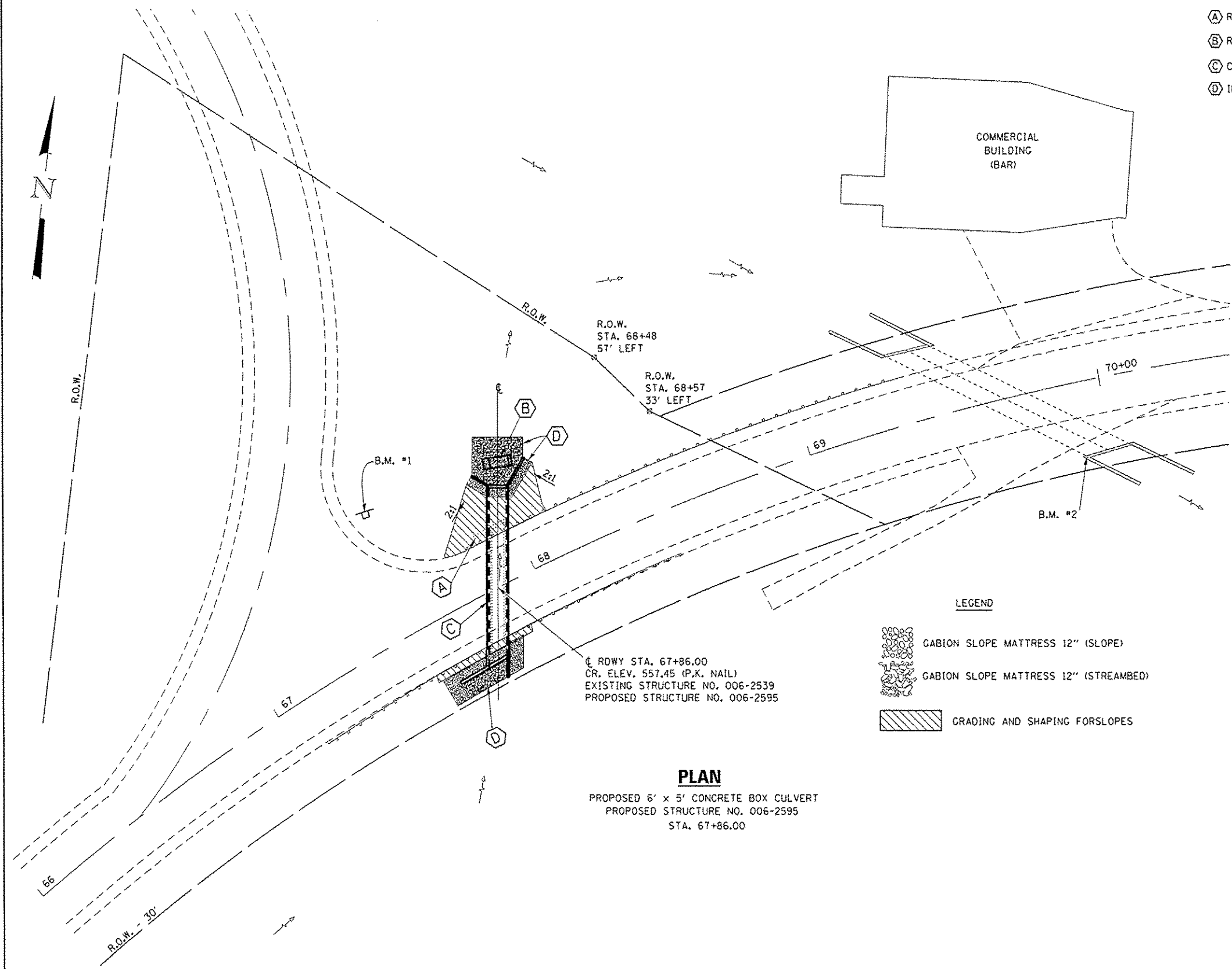
WIDTH RESTRICTION DETAILS

B.M. #1 SURVEY SPIKE IN 4"x4' POST OF STOP SIGN AT SOUTHEAST CORNER OF INTERSECTION WITH 2800 E. ST. STA. 68+68, 50' LT. ELEV. 560.53

B.M. #2 CHISLED "□" SOUTHWEST CORNER OF S.N. 006-2540, STA. 68+64, 26' RT. ELEV. 546.89

SEQUENCE OF OPERATIONS

- (A) REMOVE STRUCTURE NO. 1 (EXISTING 5'x4' CONCRETE BOX CULVERT INCLUDING WING WALLS)
- (B) REMOVE STRUCTURE NO. 2 (EXISTING CONCRETE/BRICK DISSIPATOR)
- (C) CONSTRUCT 6'x5' CAST-IN-PLACE CONCRETE BOX CULVERT WITH WING WALLS
- (D) INSTALL SLOPE MATTRESS AND SLOPE AND STREAM BED AS SHOWN.



TOTAL BILL OF MATERIAL

ITEM	UNIT	QUANTITY
REMOVAL OF EXISTING STRUCTURES NO. 1	EACH	1
REMOVAL OF EXISTING STRUCTURES NO. 2	EACH	1
STRUCTURE EXCAVATION	CU YD	330
REINFORCEMENT BARS, EPOXY COATED	POUND	7490
MECHANICAL SPLICERS	EACH	33
CONCRETE BOX CULVERTS	CU YD	40
GRANULAR BACKFILL FOR STRUCTURES	CU YD	230
ROCK FILL - EMBANKMENT	CU YD	10
ROCK FILL - FOUNDATION	CU YD	40

LEGEND

-
-
-

PLAN

PROPOSED 6' x 5' CONCRETE BOX CULVERT
 PROPOSED STRUCTURE NO. 006-2595
 STA. 67+86.00

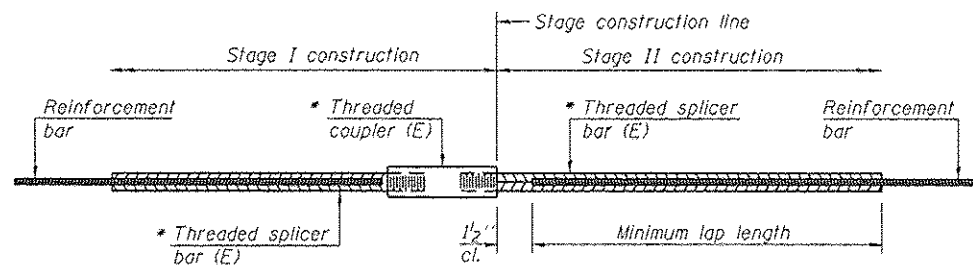
GENERAL NOTES

CONSTRUCTION OF THE PROPOSED CONCRETE BOX CULVERT, SHALL BE ACCORDING TO APPLICABLE PORTIONS OF SECTION 503 AND ARTICLE 540.05 OF THE STANDARD SPECIFICATIONS. PRECAST CONCRETE BOX CULVERTS SHALL NOT BE PERMITTED.

CONSTRUCTION OF SLOPE MATTRESS SHALL BE ACCORDING TO SECTION 284 OF THE STANDARD SPECIFICATIONS AND AS DIRECTED BY THE ENGINEER.

FILTER FABRIC FOR SLOPE MATTRESS SHALL BE ACCORDING TO SECTION 282 OF THE STANDARD SPECIFICATIONS.

FILE NAME =	USER NAME = woodshark1	DESIGNED - RW	REVISED -	STATE OF ILLINOIS DEPARTMENT OF TRANSPORTATION	SITE PLAN	F.A.S. RTE. 1252	SECTION (R4)CR-3	COUNTY BUREAU	TOTAL SHEETS 19	SHEET NO. 12
CONTRACT NO. 66E91	SCALE: SHEET 1 OF 1 SHEETS	DATE - 10/23/2015	REVISED -			TO STA.	ILLINOIS FED. AID PROJECT			
DESIGNED - RW	CHECKED - EP	DATE - 10/23/2015	REVISED -							
PLLOT SCALE = 1/80.0463" = 1" =										

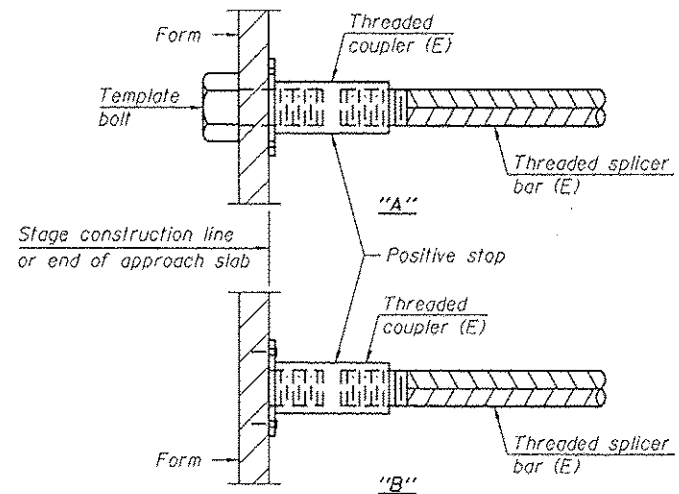


STANDARD BAR SPLICER ASSEMBLY

Threaded splicer bar length = min. lap length + 1/2" + thread length

* Epoxy not required on Bar Splicer Assembly components used in conjunction with black bars.

Location	Bar size	No. assemblies required	Minimum lap length

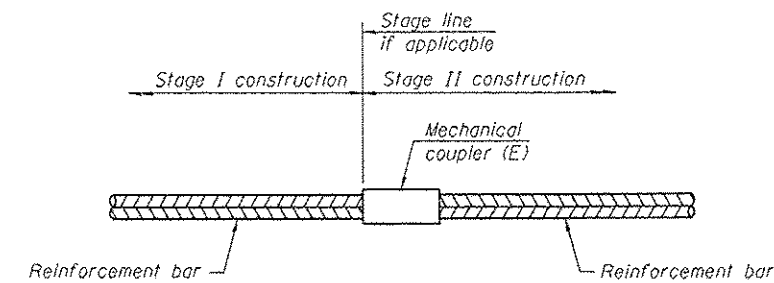


INSTALLATION AND SETTING METHODS

"A" : Set bar splicer assembly by means of a template bolt.

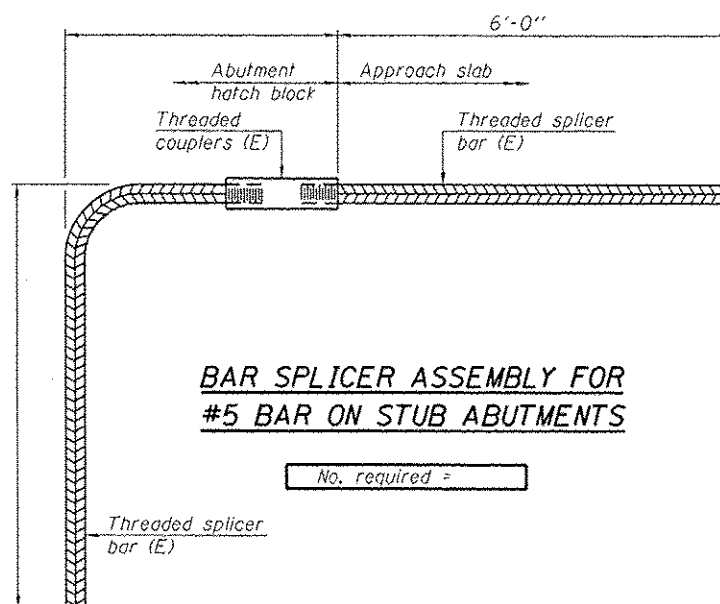
"B" : Set bar splicer assembly by nailing to wood forms or cementing to steel forms.

(E) : Indicates epoxy coating.



STANDARD MECHANICAL SPLICER

Location	Bar size	No. assemblies required
TOP SLAB	5	9
BOTTOM SLAB	4	14
EAST WALL	5	5
WEST WALL	5	5



BAR SPLICER ASSEMBLY FOR #5 BAR ON STUB ABUTMENTS

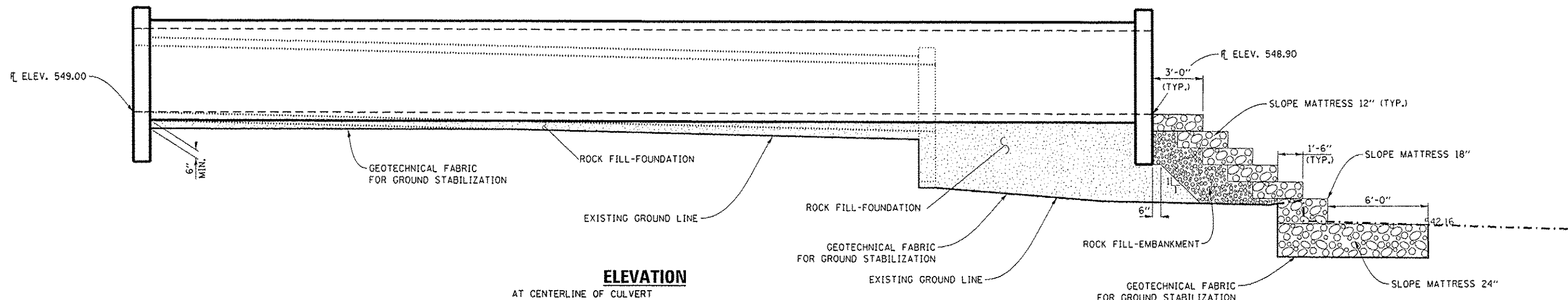
No. required =

NOTES

Splicer bars shall be deformed with threaded ends and have a minimum 60 ksi yield strength.

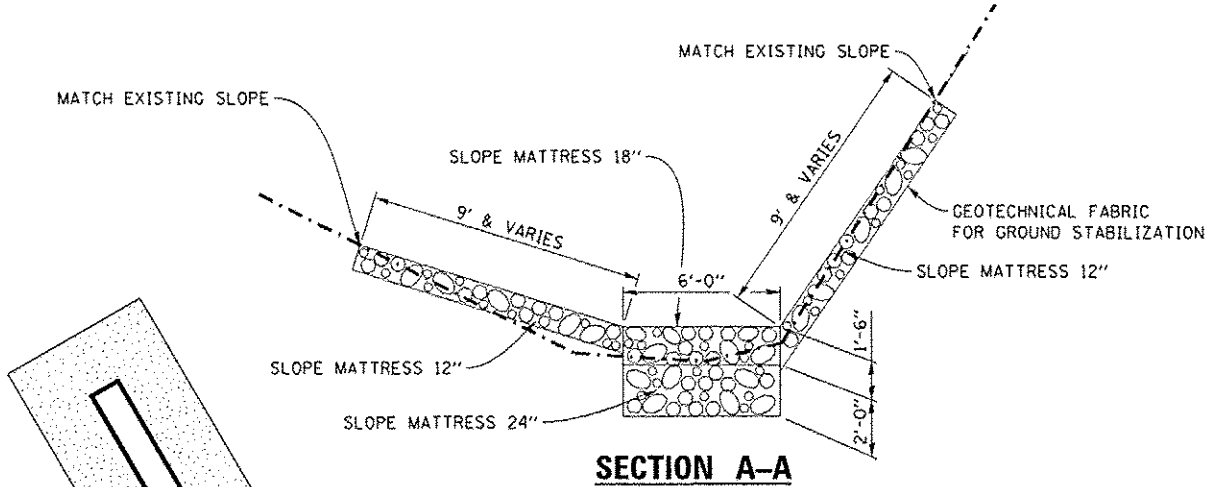
All reinforcement shall be lapped and tied to the splicer bars. Bar splicer assemblies shall be epoxy coated according to the requirements for reinforcement bars. See Section 508 of the Standard Specifications. See approved list of bar splicer assemblies and mechanical splicers for alternatives.

BSD-1 6-8-15

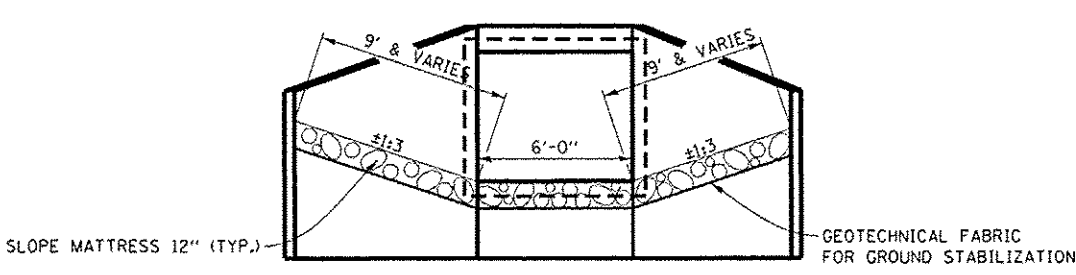


ELEVATION

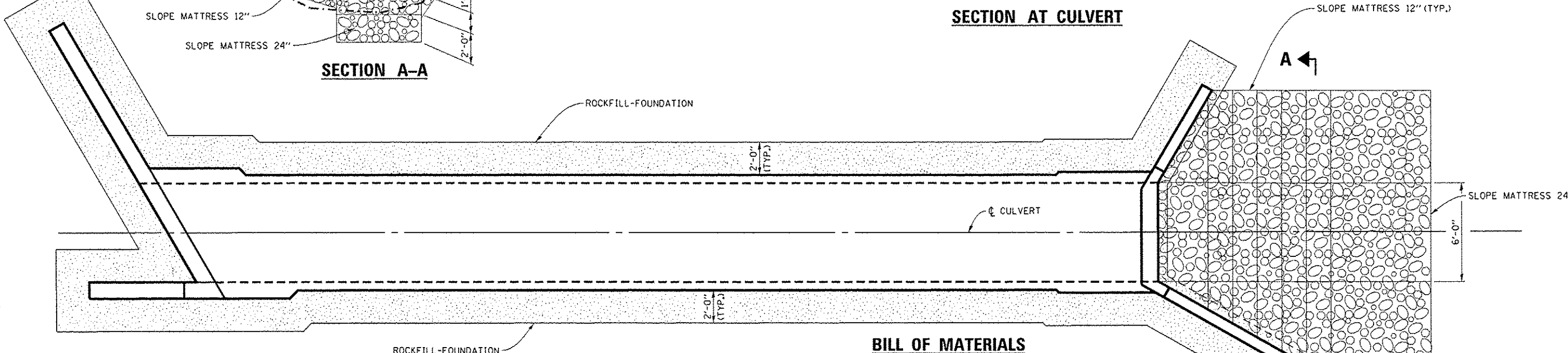
AT CENTERLINE OF CULVERT



SECTION A-A



SECTION AT CULVERT



PLAN

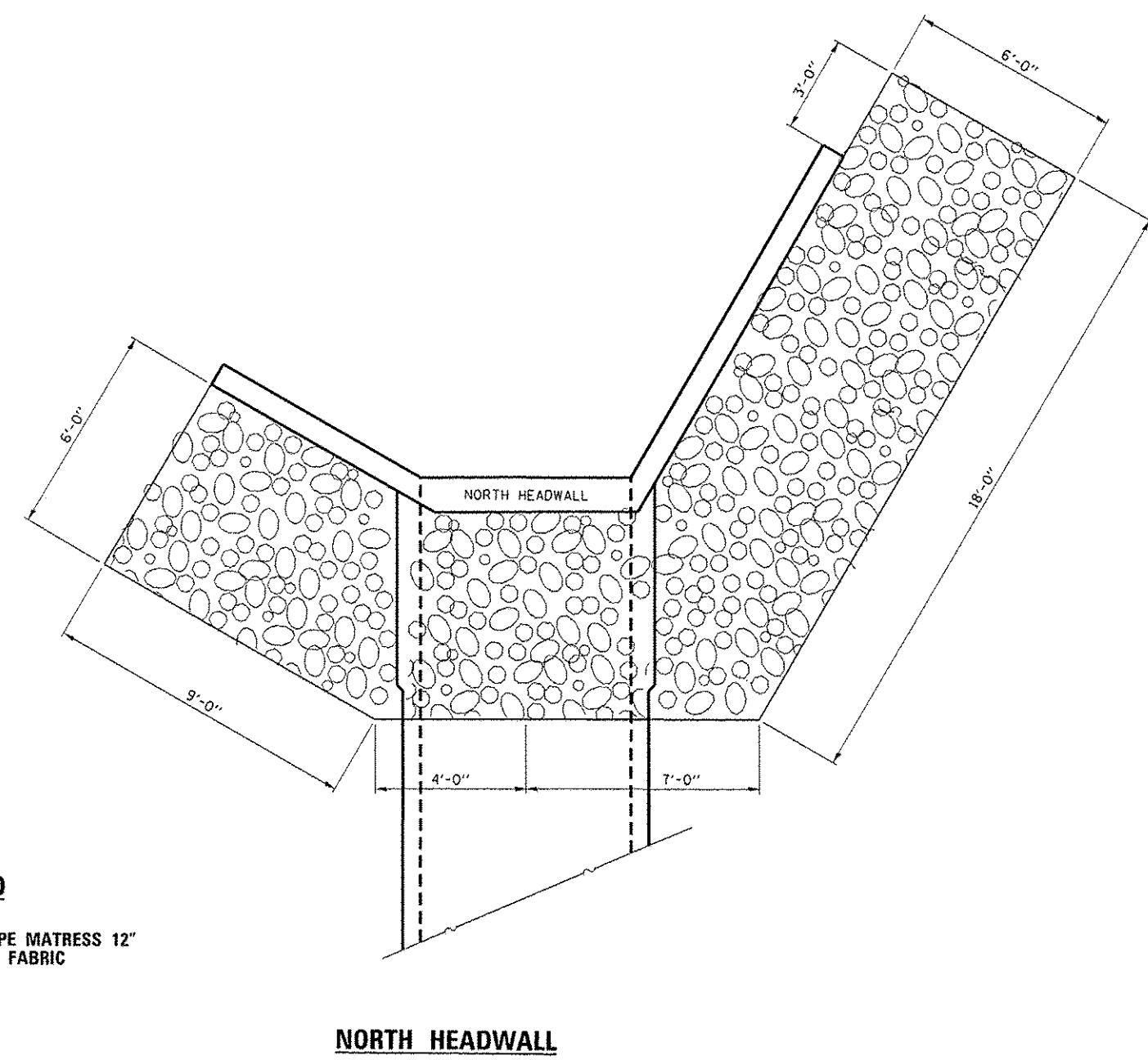
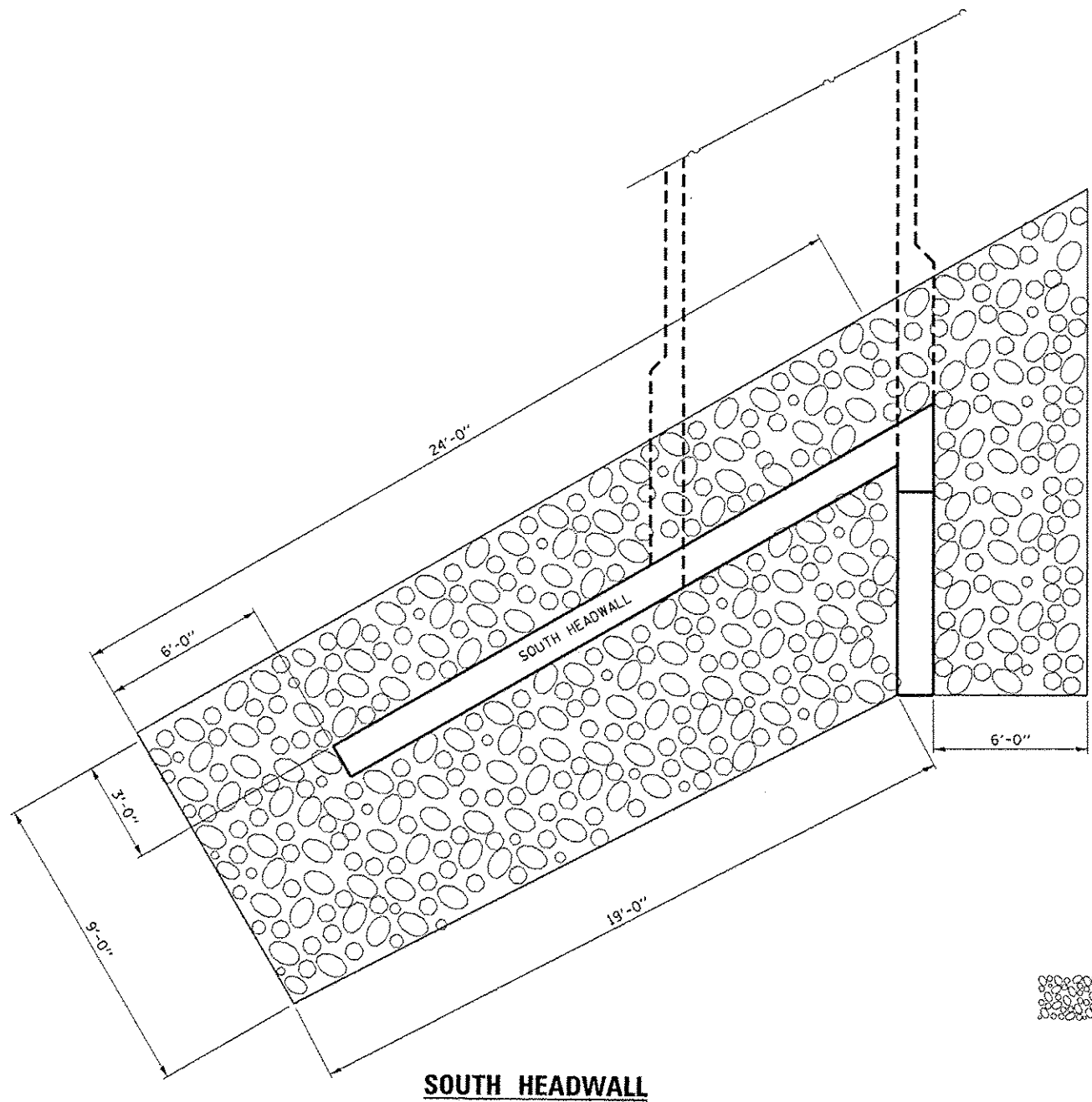
BILL OF MATERIALS

ITEM	UNIT	TOTAL
SLOPE MATTRESS 12"	SQ. YD.	64
SLOPE MATTRESS 18"	SQ. YD.	2
SLOPE MATTRESS 24"	SQ. YD.	6
GEOTECHNICAL FOR GROUND STABILIZATION	SQ. YD.	130

NOTE:
QUANTITY OF SLOPE MATTRESS SHALL BE MEASURED IN SQUARE YARDS PER THE SURFACE AREA OF EACH INDIVIDUAL BASKET SET IN PLACE..

STATE OF ILLINOIS
DEPARTMENT OF TRANSPORTATION

ROCK FILL/SLOPE MATTRESS DETAILS



LEGEND
 GABION SLOPE MATRESS 12" WITH FILTER FABRIC

SOUTH HEADWALL

NORTH HEADWALL

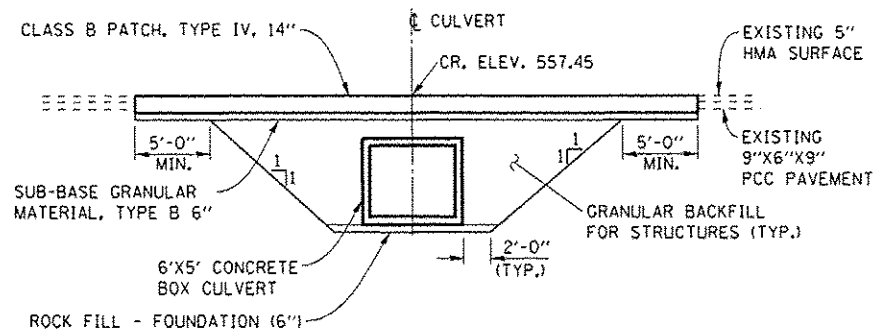
STATE OF ILLINOIS
 DEPARTMENT OF TRANSPORTATION

ROCK FILL/SLOPE MATRESS DETAILS

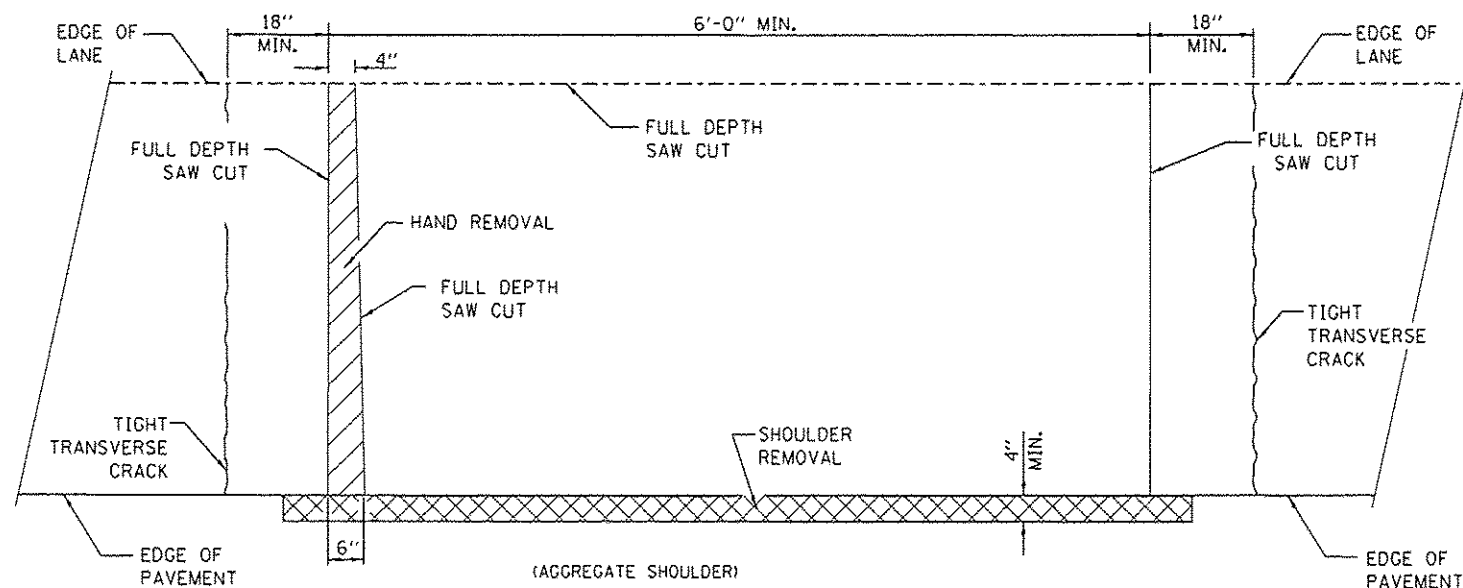
FILE NAME	USER NAME : woodshankr1	DESIGNED - RW	REVISED -
PROJECT	PROJECT	CHECKED - EP	REVISED -
DATE	DATE - 10/23/2015	REVISED -	

SCALE:	SHEET 2 OF 2 SHEETS	STA.	TO STA.
--------	---------------------	------	---------

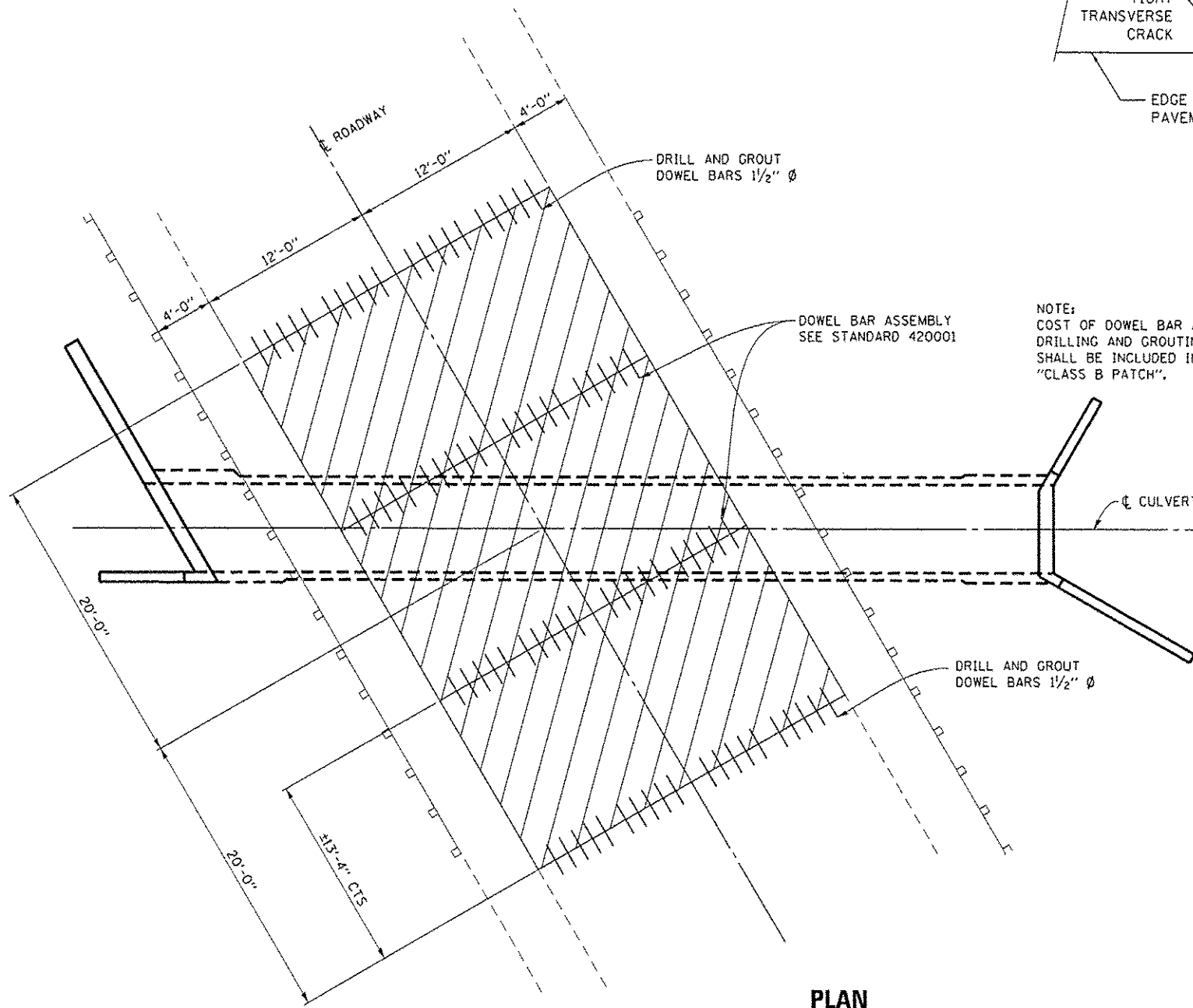
F.A.S. RTE.	SECTION	COUNTY	TOTAL SHEETS	SHEET NO.
1252	(R4)CR-3		19	18
CONTRACT NO. 66E91			ILLINOIS FED. AID PROJECT	



PROPOSED ROADWAY SECTION
AT CENTERLINE OF ROADWAY



PAVEMENT SAWING DETAIL

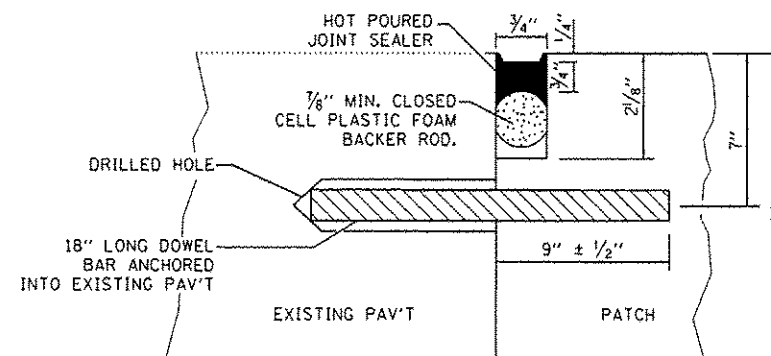


PLAN

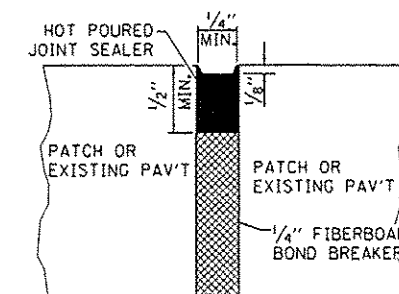
NOTE:
COST OF DOWEL BAR ASSEMBLIES AND
DRILLING AND GROUTING DOWEL BARS
SHALL BE INCLUDED IN THE COST OF THE
"CLASS B PATCH".

CLASS B PATCH

DOWEL BAR TABLE		
PAVEMENT THICKNESS	DOWEL BAR DIAMETER	HOLE DIAMETER
8" OR GREATER	1 1/2"	1 5/8"
7" THRU 7 5/8"	1 1/4"	1 3/8"
LESS THAN 7"	1"	1 1/8"



TRANSVERSE JOINT



CENTERLINE JOINT