

STATE OF ILLINOIS  
DEPARTMENT OF TRANSPORTATION  
DIVISION OF HIGHWAYS

**PROPOSED  
HIGHWAY PLANS**

FAU ROUTE 5605 (US 6)  
SECTION (17 RS-4) I  
PROJECT ACHSIP-5605 (002)  
HIGH FRICTION SURFACE TREATMENT  
BUREAU COUNTY

C-93-009-16

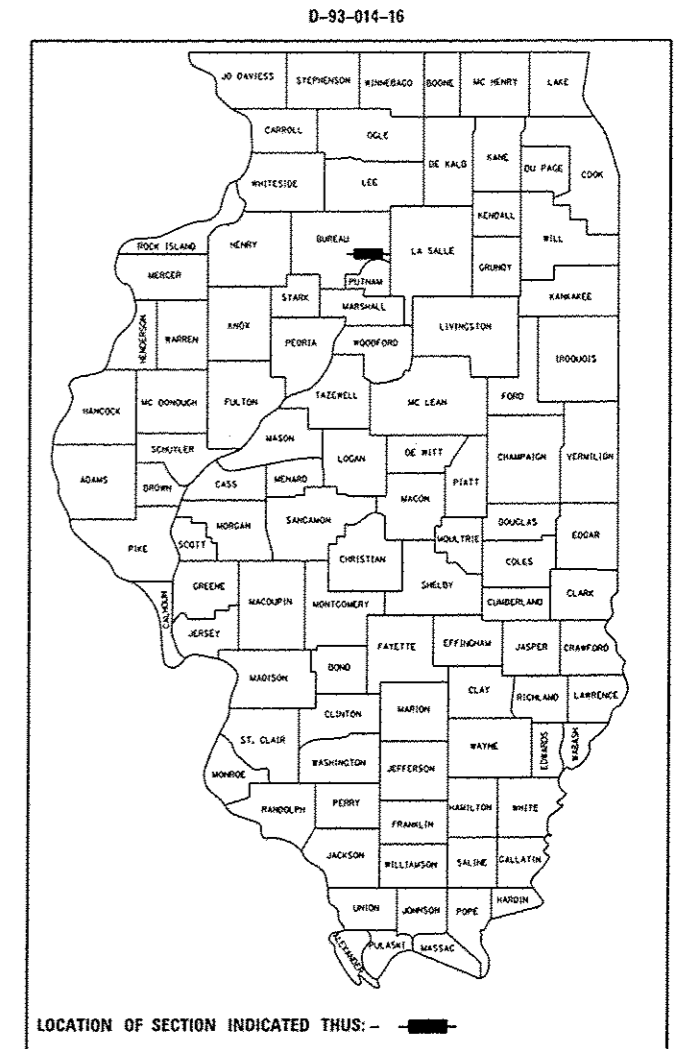
F.A.U. RTE.	SECTION	COUNTY	TOTAL SHEETS	SHEET NO.
5605	(17 RS-4) I	BUREAU	9	1
		ILLINOIS	CONTRACT NO. 66F04	

INDEX OF SHEETS

- 1 COVER SHEET
- 2 GENERAL NOTES
- 3-4 SUMMARY OF QUANTITIES
- 5 TYPICAL SECTIONS
- 6 SCHEDULES
- 7-9 DETAILS

STANDARDS

- 000001-06 STANDARD SYMBOLS, ABBREVIATIONS AND PATTERNS
- 001006 DECIMAL OF AN INCH AND OF A FOOT
- 701427-04 LANE CLOSURE, MULTILANE INTERMITTENT OR MOVING OPERATION, FOR SPEEDS ≤ 40 MPH
- 701601-09 URBAN LANE CLOSURE, MULTILANE, 1W OR 2W WITH NONTRAVERSABLE MEDIAN
- 701701-10 URBAN LANE CLOSURE, MULTILANE INTERSECTION
- 701901-05 TRAFFIC CONTROL DEVICES
- 781001-04 TYPICAL APPLICATIONS RAISED REFLECTIVE PAVEMENT MARKERS



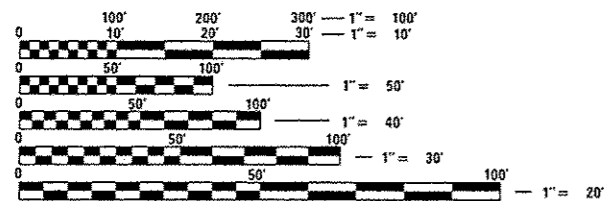
URBAN PRINCIPAL ARTERIAL  
2013 ADT = 11,600  
P.V. = 93.8% S.U. = 5.0% M.U. = 1.2%

STATE OF ILLINOIS  
DEPARTMENT OF TRANSPORTATION  
DIVISION OF HIGHWAYS

SUBMITTED January 28, 2016  
Paul Loete, P.E.  
DEPUTY DIRECTOR OF HIGHWAYS, REGION ENGINEER

March 18, 2016  
Maween M. Addis, P.E.  
ENGINEER OF DESIGN AND ENVIRONMENT

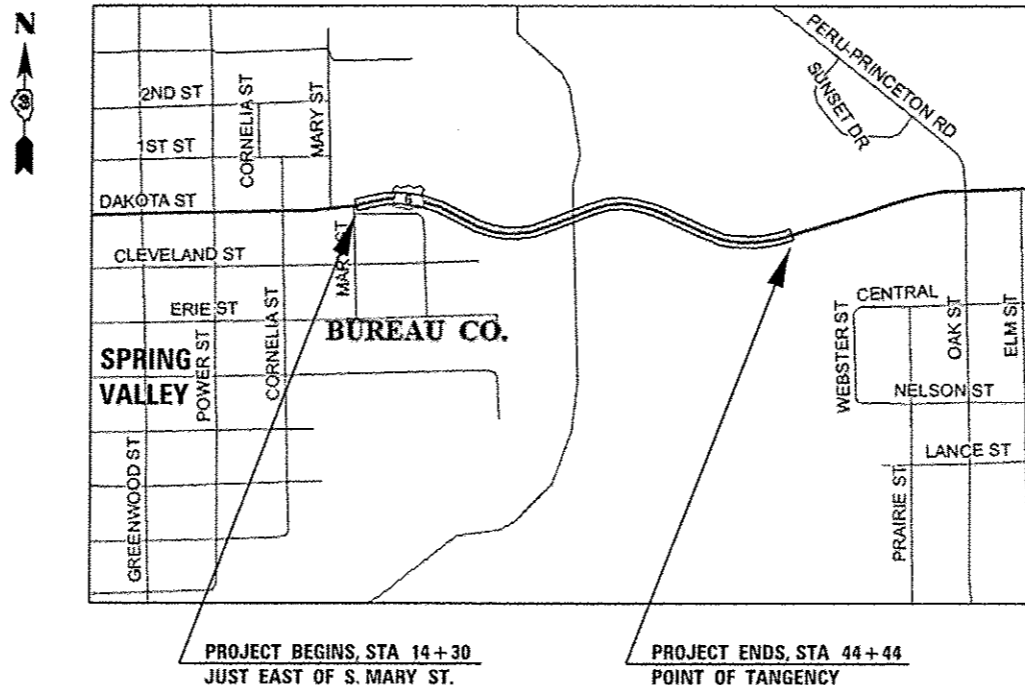
March 18, 2016  
Omer Osman, P.E.  
DIRECTOR OF HIGHWAYS, CHIEF ENGINEER



FULL SIZE PLANS HAVE BEEN PREPARED USING STANDARD ENGINEERING SCALES. REDUCED SIZED PLANS WILL NOT CONFORM TO STANDARD SCALES. IN MAKING MEASUREMENTS ON REDUCED PLANS, THE ABOVE SCALES MAY BE USED.

J.U.L.I.E.  
JOINT UTILITY LOCATION INFORMATION FOR EXCAVATION  
1-800-892-0123  
OR 811

PROJECT ENGINEER: JOE KANNEL, P.E.  
UNIT CHIEF: MARC BUDZYNSKI  
DISTRICT 3 NO. (815) 434-6131  
CONTRACT NO. 66F04



GROSS & NET LENGTH = 3,014 FT. = 0.571 MILES

PRINTED BY THE AUTHORITY  
OF THE STATE OF ILLINOIS



CONSTR. CODE

90% FED  
10% STATE

CODE NO.	ITEM	UNIT	TOTAL QUANTITY	ROADWAY
				0021 URBAN
40600290	BITUMINOUS MATERIALS (TACK COAT)	PCUND	6980	6980
40600400	MIXTURE FOR CRACKS, JOINTS, AND FLANGEWAYS	TON	4.6	4.6
40600527	LEVELING BINDER (HAND METHOD), IL-9.5FG, N50	TON	7.8	7.8
40600627	LEVELING BINDER (MACHINE METHOD), IL-9.5FG, N50	TON	1303	1303
40600990	TEMPORARY RAMP	SQ YD	106.8	106.8
44000155	HOT-MIX ASPHALT SURFACE REMOVAL, 1 1/2"	SQ YD	15510	15510
45100200	CRACK FILLING	POUND	50	50
67100100	MOBILIZATION	LSUM	1.0	1.0
70102630	TRAFFIC CONTROL AND PROTECTION, STANDARD 701601	LSUM	1.0	1.0
70102637	TRAFFIC CONTROL AND PROTECTION, STANDARD 701701	EACH	1	1
70300210	TEMPORARY PAVEMENT MARKING LETTERS AND SYMBOLS	SQ FT	31.2	31.2
70300220	TEMPORARY PAVEMENT MARKING - LINE 4"	FOOT	12626	12626
70300240	TEMPORARY PAVEMENT MARKING - LINE 6"	FOOT	1507	1507
70300250	TEMPORARY PAVEMENT MARKING - LINE 8"	FOOT	140	140

14

FILE NAME =	USER NAME = budzyhakjm	DESIGNED -	REVISED -	<b>STATE OF ILLINOIS DEPARTMENT OF TRANSPORTATION</b>	<b>SUMMARY OF QUANTITIES</b>				F.A.U. RTE.	SECTION	COUNTY	TOTAL SHEETS	SHEET NO.
p:\1\IL04E01DINTEG\illinois.gov\FWIDOT\Documents\2007 Offices\District 3\Projects\030	DRAWN Data\0306F04\shtr-detail.dgn	REVISION	REVISION						5605	(17 RS-4) I	BUREAU	9	3
PLOT SCALE = 100.0000' / 1"	CHECKED -	REVISION	REVISION		SCALE: SHEET OF SHEETS STA. TO STA.				CONTRACT NO. 66F04				
PLOT DATE = 2/1/2016	DATE -	REVISION	REVISION						[ILLINOIS] FED. AID PROJECT				

CONSTR. CODE

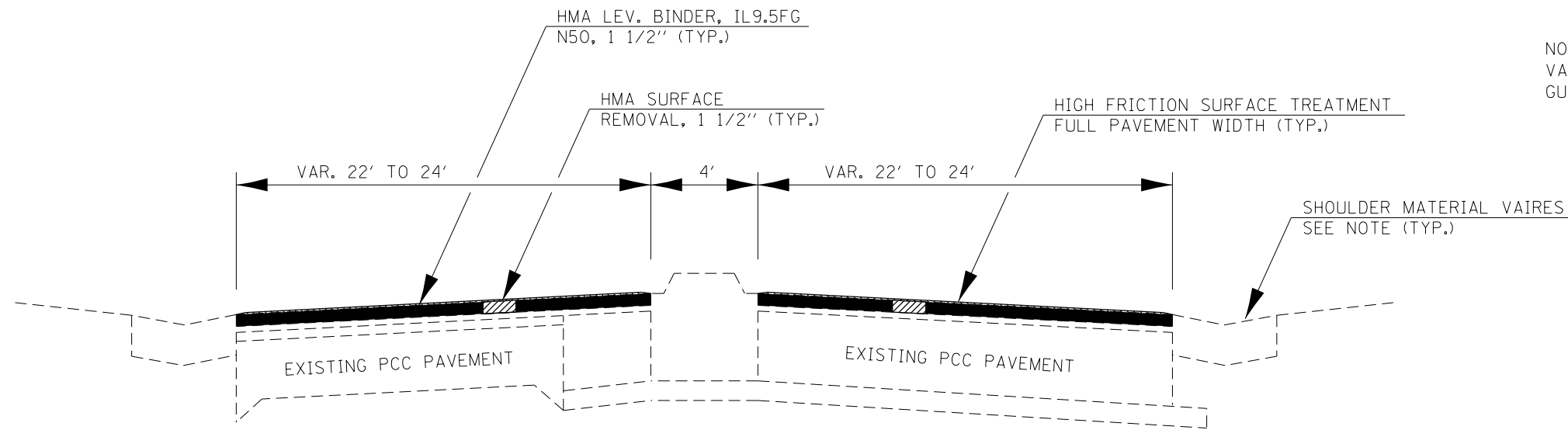
90% FED  
10% STATE

CODE NO.	ITEM	UNIT	TOTAL QUANTITY	ROADWAY
				0021 URBAN
70300260	TEMPORARY PAVEMENT MARKING - LINE 12"	FOOT	88	88
* 78003130	PREFORMED PLASTIC PAVEMENT MARKING, TYPE B - LINE 6"	FOOT	1507	1507
* 78003140	PREFORMED PLASTIC PAVEMENT MARKING, TYPE B - LINE 8"	FOOT	140	140
* 78009000	MODIFIED URETHANE PAVEMENT MARKING - LETTERS AND SYMBOLS	SQ FT	31.2	31.2
* 78009004	MODIFIED URETHANE PAVEMENT MARKING - LINE 4"	FOOT	12626	12626
* 78009012	MODIFIED URETHANE PAVEMENT MARKING - LINE 12"	FOOT	88	88
* 78100100	RAISED REFLECTIVE PAVEMENT MARKER	EACH	92	92
78300100	PAVEMENT MARKING REMOVAL	SQ FT	5174	5174
78300200	RAISED REFLECTIVE PAVEMENT MARKER REMOVAL	EACH	92	92
X0327693	HIGH FRICTION SURFACE TREATMENT	SQ YD	17390	17390
X7810400	TEMPORARY RAISED PAVEMENT MARKER	EACH	152	152
* X7830074	GROOVING FOR RECESSED PAVEMENT MARKING 7"	FOOT	1507	1507
* X7830076	GROOVING FOR RECESSED PAVEMENT MARKING 9"	FOOT	140	140
X0030850	TEMPORARY INFORMATION SIGNING	SQ FT	42	42

\* SPECIALTY ITEM

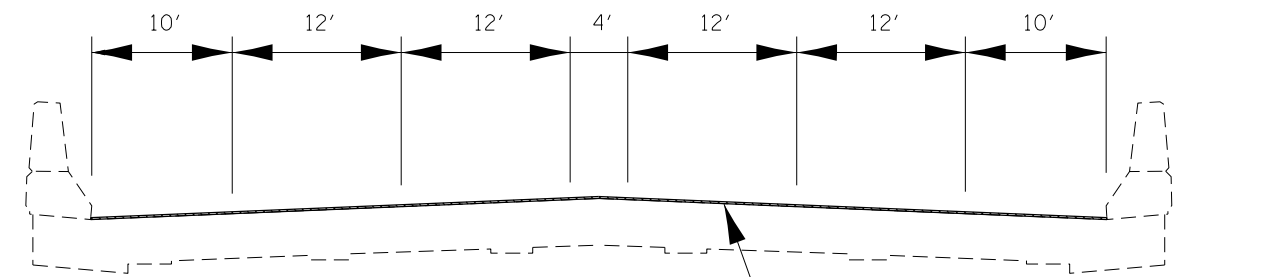
FILE NAME *	USER NAME * budzinski	DESIGNED -	REVISED -	<b>STATE OF ILLINOIS DEPARTMENT OF TRANSPORTATION</b>	<b>SUMMARY OF QUANTITIES</b>				F.A.U. RTE.	SECTION	COUNTY	TOTAL SHEETS	SHEET NO.
path\11084E81DINTE6.illinois.gov\FW1007\Documents\1007 Offices\District 3\Projects\0368\DRAWINGData\0368F04-shr-details.dgn		CHECKED -	REVISED -						5605	(17 RS+4) I	BUREAU	9	4
PLOT SCALE * 1/8"=1'-0"		DATE -	REVISED -		SCALE:	SHEET	OF	SHEETS	STA.	TO STA.	ILLINOIS FED. AID PROJECT		
PLOT DATE * 2/1/2016					CONTRACT NO. 66F04								

NOTE: SHOULDER MATERIAL ON BOTH SIDES VARIES BETWEEN CONCRETE "V" TYPE GUTTER AND HOT-MIX ASPHALT



**PROPOSED TYPICAL SECTION**

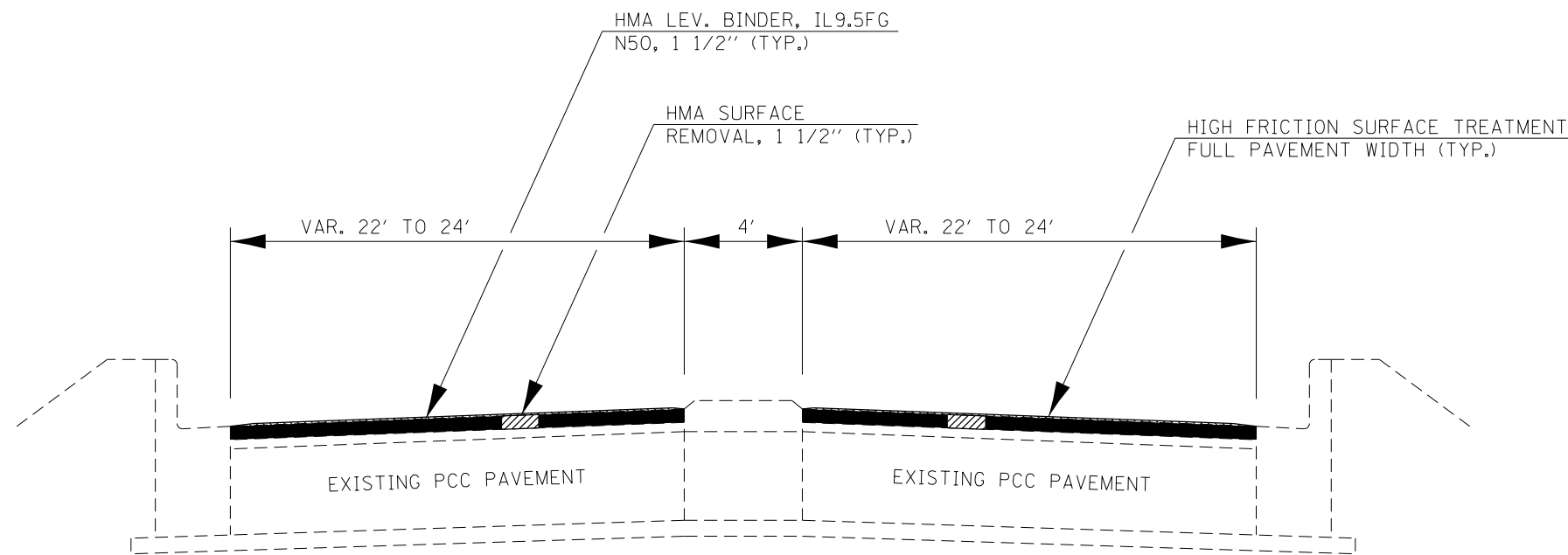
STA. 14+30 TO STA. 28+25



HIGH FRICTION SURFACE TREATMENT FULL PAVEMENT WIDTH (TYP.)

**PROPOSED TYPICAL SECTION**

STA. 28+25 TO STA. 30+60



**PROPOSED TYPICAL SECTION**

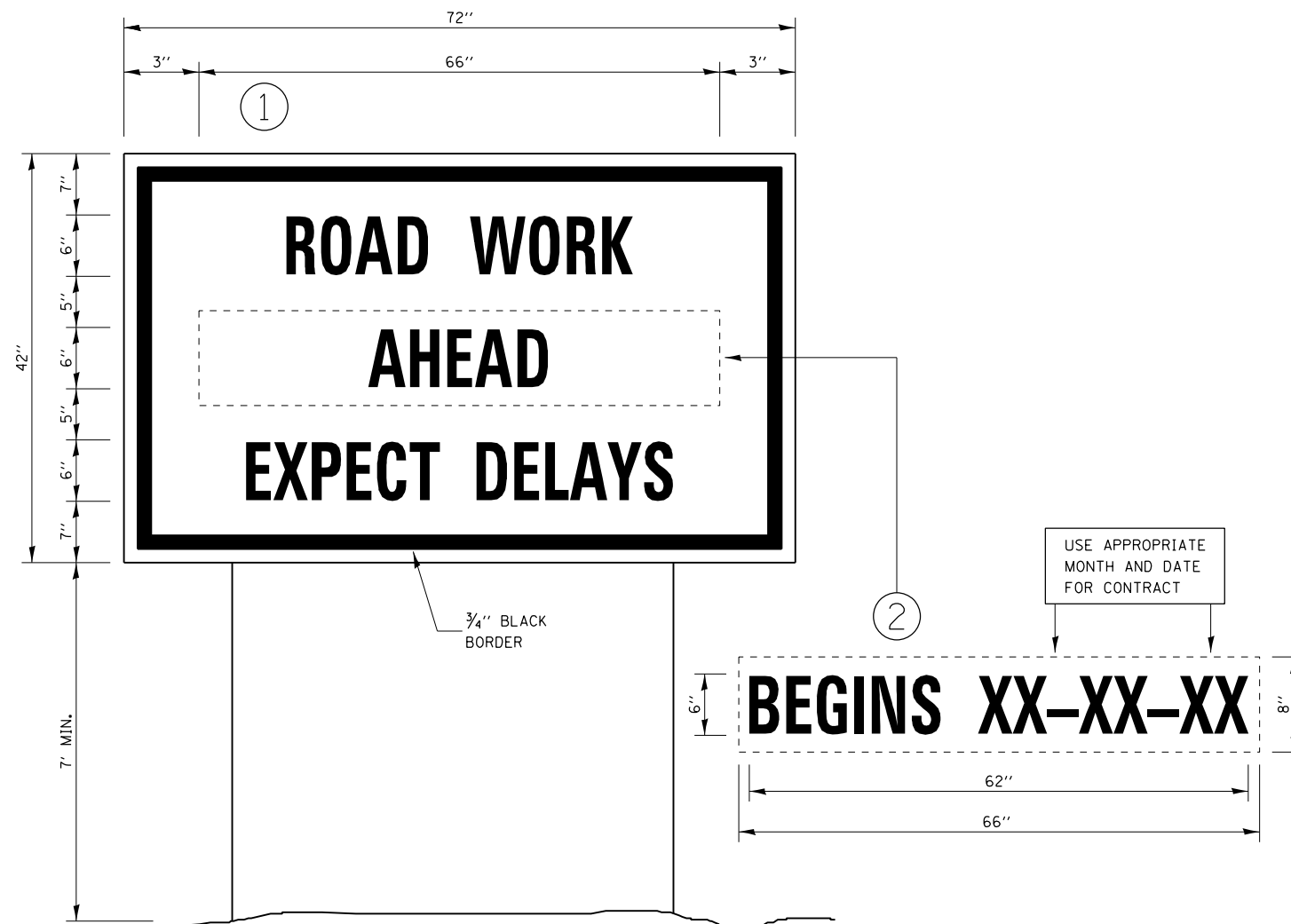
STA 30+60 TO STA 44+44

FILE NAME =	USER NAME = budzynskim	DESIGNED -	REVISED -	<b>STATE OF ILLINOIS DEPARTMENT OF TRANSPORTATION</b>	<b>TYPICAL SECTIONS</b>			F.A.U. RTÉ.	SECTION	COUNTY	TOTAL SHEETS	SHEET NO.
p:\11\084EBIDINTEG.illinois.gov\PIWIDOT\Documents\DOT Offices\District 3\Projects\0366\DRAWING\B366F04-shd-details.dgn	PLOT SCALE = 100.0000' / 1in.	CHECKED -	REVISED -					5605	(17 RS-4) I	BUREAU	9	5
PLOT DATE = 2/1/2016	DATE -	REVISED -	REVISED -		CONTRACT NO. 66F04			ILLINOIS FED. AID PROJECT				
					SCALE:	SHEET	OF	SHEETS	STA.	TO	STA.	

RESURFACING AND HIGH FRICTION SURFACE TREATMENT SCHEDULE												
LOCATION			LENGTH	AREA	LEV BIND (MM) IL-9.5FG N50 1 1/2"	LEV BIND (HM) IL-9.5FG N50	HMA SURF REM 1 1/2"	BIT MATLS PR CT	MIX FOR CR, JTS, FLGWYS	TEMPORARY RAMP	CRACK FILLING	HIGH FRICTION SURFACE TREATMENT
STA	TO	STA	FOOT	SQ YD	TON	TON	SQ YD	POUND	TON	SQ YD	POUND	SQ YD
14+30	TO	28+25	1395	8130	683	4.1	8130	3659	2.4	26.7	25	8130
28+25	TO	30+60	235	1880						53.4		1880
30+60	TO	44+44	1384	7380	620	3.7	7380	3321	2.2	26.7	25	7380
<b>TOTAL</b>			<b>3014</b>	<b>17390</b>	<b>1303</b>	<b>7.8</b>	<b>15510</b>	<b>6980</b>	<b>4.6</b>	<b>106.8</b>	<b>50</b>	<b>17390</b>

PAVEMENT MARKING SCHEDULE												
LOCATION			LENGTH	MODIFIED URETHANE			LETTERS & SYMBOLS	PREFORMED PLASTIC, TYPE B		RAISED REF PAVEMENT MKR		RAISED REF PVT MKR REM
				4"	12"	FOOT		6"	8"	EACH	EACH	
STA	TO	STA	FOOT	YELLOW FOOT	WHITE FOOT		YELLOW FOOT	SQ FT	WHITE FOOT			WHITE FOOT
14+30	TO	28+25	1395	3360	2790	88	31.2	698	140	36	20	56
28+25	TO	30+60	235	470	470	0	0	118	0	0	0	0
30+60	TO	44+44	1384	2768	2768	0	0	692	0	36	0	36
<b>TOTAL</b>			<b>3014</b>	<b>12626</b>		<b>88</b>	<b>31.2</b>	<b>1507</b>	<b>140</b>	<b>92</b>		<b>92</b>

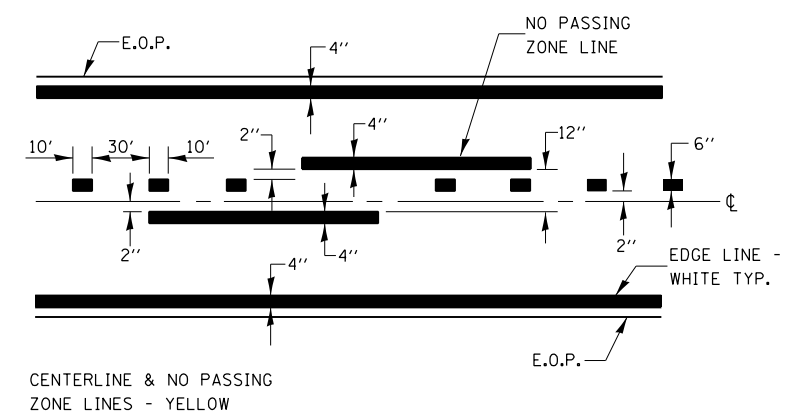
TEMPORARY PAVEMENT MARKING SCHEDULE											
LOCATION			LENGTH	TEMPORARY PAVEMENT MARKINGS					LETTERS & SYMBOLS	PAVEMENT MARKING REMOVAL	TEMP RAISED PVMT MKR
				4"	6"	8"	12"	FOOT			
STA	TO	STA	FOOT	YELLOW FOOT	WHITE FOOT	WHITE FOOT	WHITE FOOT		YELLOW FOOT	SQ FT	SQ FT
14+30	TO	28+25	1395	3360	2790	698	140	88	31.2	2611	70
28+25	TO	30+60	235	470	470	118	0	0	0	372	12
30+60	TO	44+44	1384	2768	2768	692	0	0	0	2191	70
<b>TOTAL</b>			<b>3014</b>	<b>12626</b>		<b>1507</b>	<b>140</b>	<b>88</b>	<b>31.2</b>	<b>5174</b>	<b>152</b>



### TEMPORARY INFORMATION SIGNING

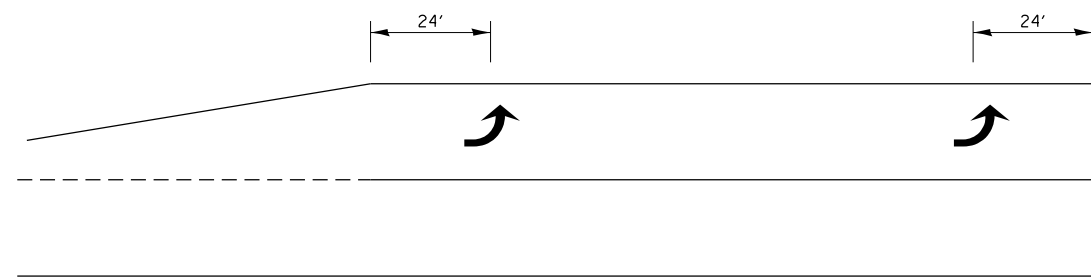
#### NOTES:

1. USE 6" D BLACK LETTERING ON FLOURESENT ORANGE BACKGROUND.
2. ERECT SIGNS AT LOCATIONS IN ADVANCE OF THE "ROAD CONSTRUCTION AHEAD" SIGNS AS DIRECTED BY THE ENGINEER.
3. ERECT SIGN ① WITH INSTALLED PANEL ② A MINIMUM OF ONE WEEK PRIOR TO THE START OF THE LANE CLOSURE.
4. REMOVE PANEL ② ON THAT DATE.
5. SEE SPECIAL PROVISION "TEMPORARY INFORMATION SIGNING" FOR ADDITIONAL INFORMATION.
6. WILL BE PAID FOR PER SQ FT AS "TEMPORARY INFORMATION SIGNING". EACH SIGN = 21 SQ FT AND THE DATE PANEL ② WILL NOT BE MEASURED SEPARATELY FOR PAYMENT.



### PAVEMENT MARKING

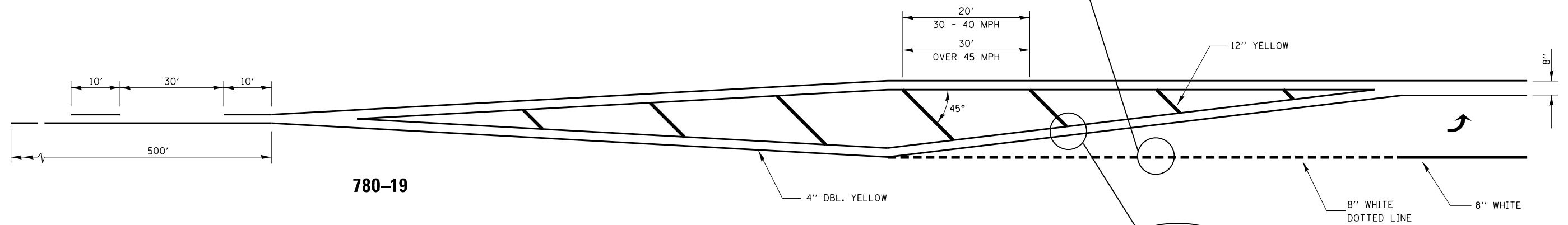
FILE NAME =	USER NAME = budzynskim	DESIGNED -	REVISED -	<b>STATE OF ILLINOIS DEPARTMENT OF TRANSPORTATION</b>	<b>DETAILS</b>	F.A.U. RTE.	SECTION	COUNTY	TOTAL SHEETS	SHEET NO.	
p:\11\084EBIDINTEG.illinois.gov\PWIDOT\Documents\DOT Offices\District 3\Projects\0366\Drawings\04-shd-details.dgn		CHECKED -	REVISED -			5605	(17 RS-4) I	BUREAU	9	7	
PLOT SCALE = 100.0000' / 1in.		DATE -	REVISED -			CONTRACT NO. 66F04					
PLOT DATE = 2/1/2016						ILLINOIS FED. AID PROJECT					
SCALE:						SHEET OF SHEETS STA. TO STA.					



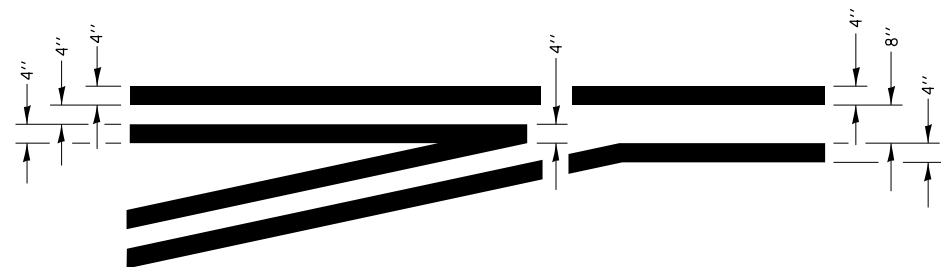
100' TO 149'

**TYPICAL PLACEMENT OF ARROWS  
IN TURN LANES**

780-10



780-19



**TYPICAL APPLICATION  
LEFT TURN LANES**

780-1

FILE NAME =	USER NAME = budzynskim	DESIGNED -	REVISED -
pw:\ll\084EBIDINTEG.illinois.gov\PIWIDOT\Documents\DOT Offices\District 3\Projects\0366\DRAWING\B366F04-shd-details.dgn		CHECKED -	REVISED -
		DATE -	REVISED -

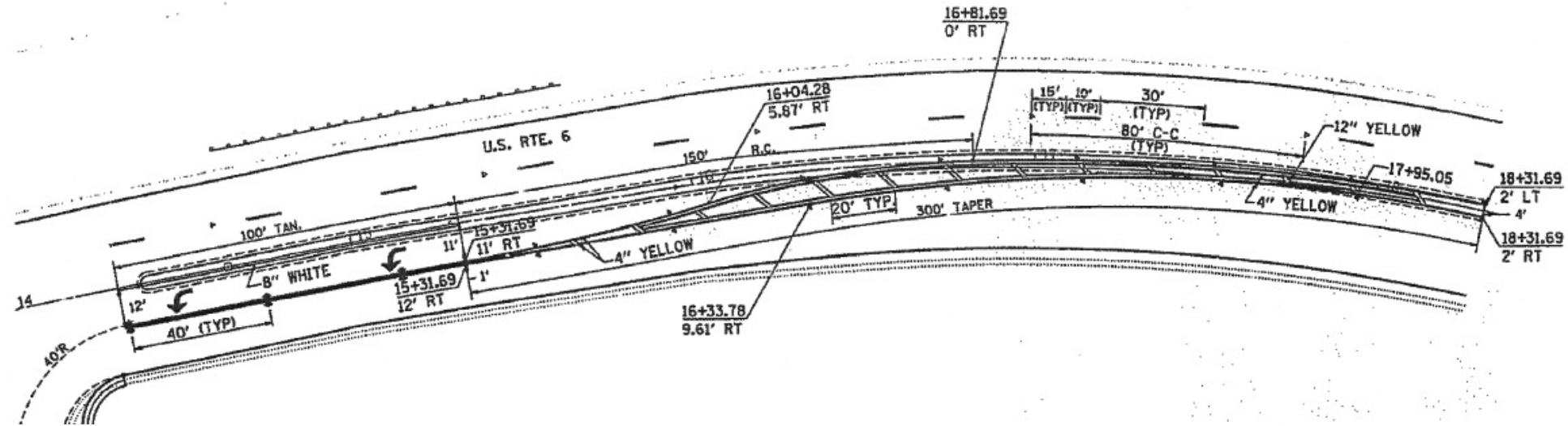
**STATE OF ILLINOIS  
DEPARTMENT OF TRANSPORTATION**

<b>DETAILS</b>			
SCALE:	SHEET	OF SHEETS	STA. TO STA.

F.A.U. RTE.	SECTION	COUNTY	TOTAL SHEETS	SHEET NO.
5605	(17 RS-4) I	BUREAU	9	8
CONTRACT NO. 66F04				
ILLINOIS FED. AID PROJECT				



# FOR INFORMATION ONLY



FILE NAME =	USER NAME = budzynskim	DESIGNED -	REVISED -
p:\11\084EBIDINTEG.illinois.gov\PIWIDOT\Documents\DOT Offices\District 3\Projects\0366\Drawings\04-shr-details.dgn		CHECKED -	REVISED -
		DATE -	REVISED -

STATE OF ILLINOIS  
DEPARTMENT OF TRANSPORTATION

DETAILS

SCALE: SHEET OF SHEETS STA. TO STA.

F.A.U. RTE.	SECTION	COUNTY	TOTAL SHEETS	SHEET NO.
5605	(17 RS-4) I	BUREAU	9	9
				CONTRACT NO. 66F04
ILLINOIS FED. AID PROJECT				