

STATE OF ILLINOIS
DEPARTMENT OF TRANSPORTATION
DIVISION OF HIGHWAYS

**PROPOSED
HIGHWAY PLANS**

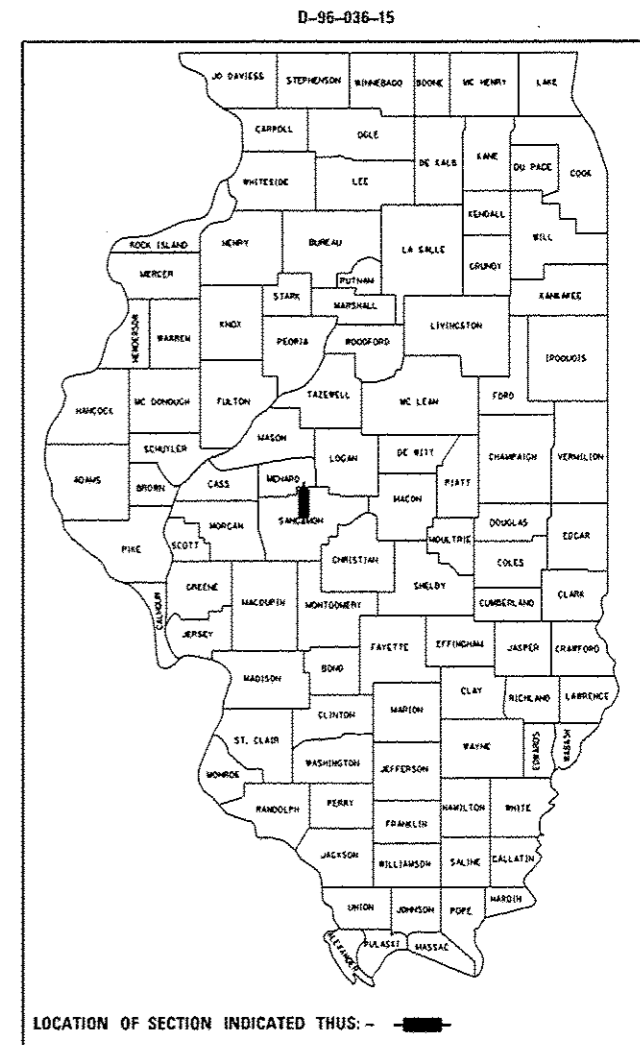
FAP ROUTE 658 (IL 29 / J D JONES PKWY)
SECTION (102)I-5

HANDRAIL REPLACEMENT
SANGAMON COUNTY

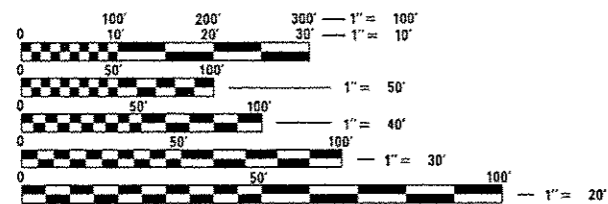
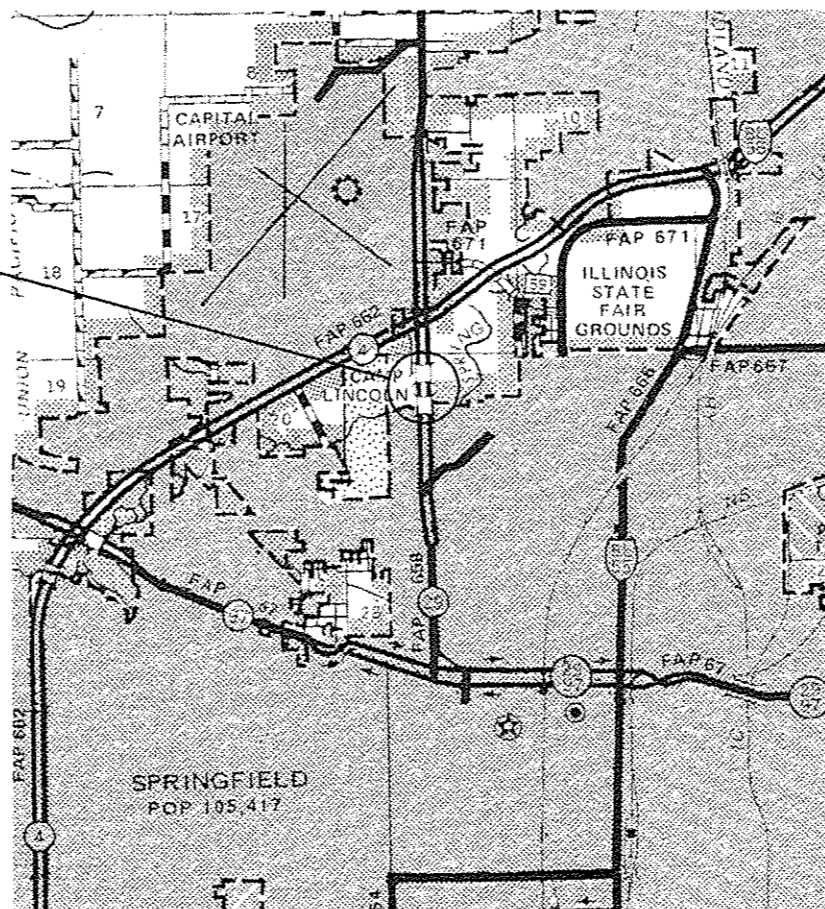
C-96-036-15

FOR INDEX OF SHEETS, SEE SHEET NO. 2

F.A.P. RTE.	SECTION	COUNTY	TOTAL SHEETS	SHEET NO.
658	(102)I-5	SANGAMON	6	1
ILLINOIS			CONTRACT NO. 72H61	



PROJECT LOCATION
SN 084-0168 & 084-0169
IL 29 / J D JONES PKWY
0.34 MI & 0.5 M I S OF IL 4



FULL SIZE PLANS HAVE BEEN PREPARED USING STANDARD ENGINEERING SCALES. REDUCED SIZED PLANS WILL NOT CONFORM TO STANDARD SCALES. IN MAKING MEASUREMENTS ON REDUCED PLANS, THE ABOVE SCALES MAY BE USED.

J.U.L.I.E.
JOINT UTILITY LOCATION INFORMATION FOR EXCAVATION
1-800-892-0123
OR 811

BRIDGE MAINTENANCE ENGINEER (ACTING): BRANDON DUDLEY - (217)785-9290
BRIDGE INSPECTION ENGINEER: DAVE COPENBARGER - (217)785-5306

GROSS LENGTH = 923.58 FT. = 0.175 MILE
NET LENGTH = 216.00 FT. = 0.061 MILE

CONTRACT NO. 72H61

STATE OF ILLINOIS
DEPARTMENT OF TRANSPORTATION
DIVISION OF HIGHWAYS

SUBMITTED January 28 2015
Roger Z. Dushak
DEPUTY DIRECTOR OF HIGHWAYS, REGION ENGINEER

March 13 2016
Maureen M. Addis PE/EA
ENGINEER OF DESIGN AND ENVIRONMENT

March 13 2016
Orin C. Copen PE/EA
DIRECTOR OF HIGHWAYS, CHIEF ENGINEER

**PRINTED BY THE AUTHORITY
OF THE STATE OF ILLINOIS**

INDEX OF SHEETS

- 1 COVER SHEET & INDEX
- 2 GENERAL NOTES, STANDARDS, SUMMARY OF QUANTITIES
- 3-4 SN 084-0168 PLAN SHEETS
- 5-6 SN 084-0169 PLAN SHEETS

HIGHWAY STANDARDS

000001-06
 701601-09
 701901-04
 725001
 782006

URBAN
CONSTR. CODE
100% STATE
ROADWAY
0014
S.N.

GENERAL NOTES


1. THIS SECTION SHALL BE CONSTRUCTED IN ACCORDANCE WITH THE PLANS, THE STANDARD SPECIFICATION FOR ROAD AND BRIDGE CONSTRUCTION ADOPTED JANUARY 1, 2012, THE SUPPLEMENTAL SPECIFICATIONS AND RECURRING SPECIAL PROVISIONS, AND THE SPECIAL PROVISIONS INCLUDED IN THESE PLANS.
2. ANY REFERENCE TO THE STANDARDS IN THE PLANS SHALL BE INTERPRETED TO BE THE EDITION, AS INDICATED BY THE SUB-NUMBER, LISTED IN THE INDEX OF SHEETS, OR THE COPY OF THE STANDARD INCLUDED IN THE PLANS.
3. PLAN DIMENSIONS AND DETAILS RELATIVE TO EXISTING PLANS ARE SUBJECT TO NOMINAL CONSTRUCTION VARIATIONS. THE CONTRACTOR SHALL FIELD VERIFY EXISTING DIMENSIONS AND DETAILS AFFECTING NEW CONSTRUCTION AND MAKE NECESSARY APPROVED ADJUSTMENTS PRIOR TO CONSTRUCTION OR ORDERING OF MATERIALS. SUCH VARIATIONS SHALL NOT BE CAUSE FOR ADDITIONAL COMPENSATION FOR A CHANGE IN THE SCOPE OF WORK, HOWEVER, THE CONTRACTOR WILL BE PAID FOR THE QUANTITY ACTUALLY FURNISHED AT THE UNIT PRICE BID OFR THE WORK.

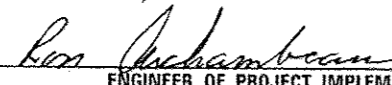
CODE NO.	ITEM	UNIT	TOTAL QUANTITY	
50300255	CONCRETE SUPERSTRUCTURE	CU YD	26.2	26.2
50800205	REINFORCEMENT BARS, EPOXY COATED	POUND	4500	4500
67100100	MOBILIZATION	L SUM	1	1
70102630	TRAFFIC CONTROL AND PROTECTION, STANDARD 701601	L SUM	1	1
* 78200530	BARRIER WALL MARKERS, TYPE C	EACH	10	10

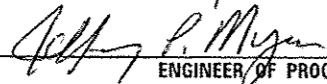
5

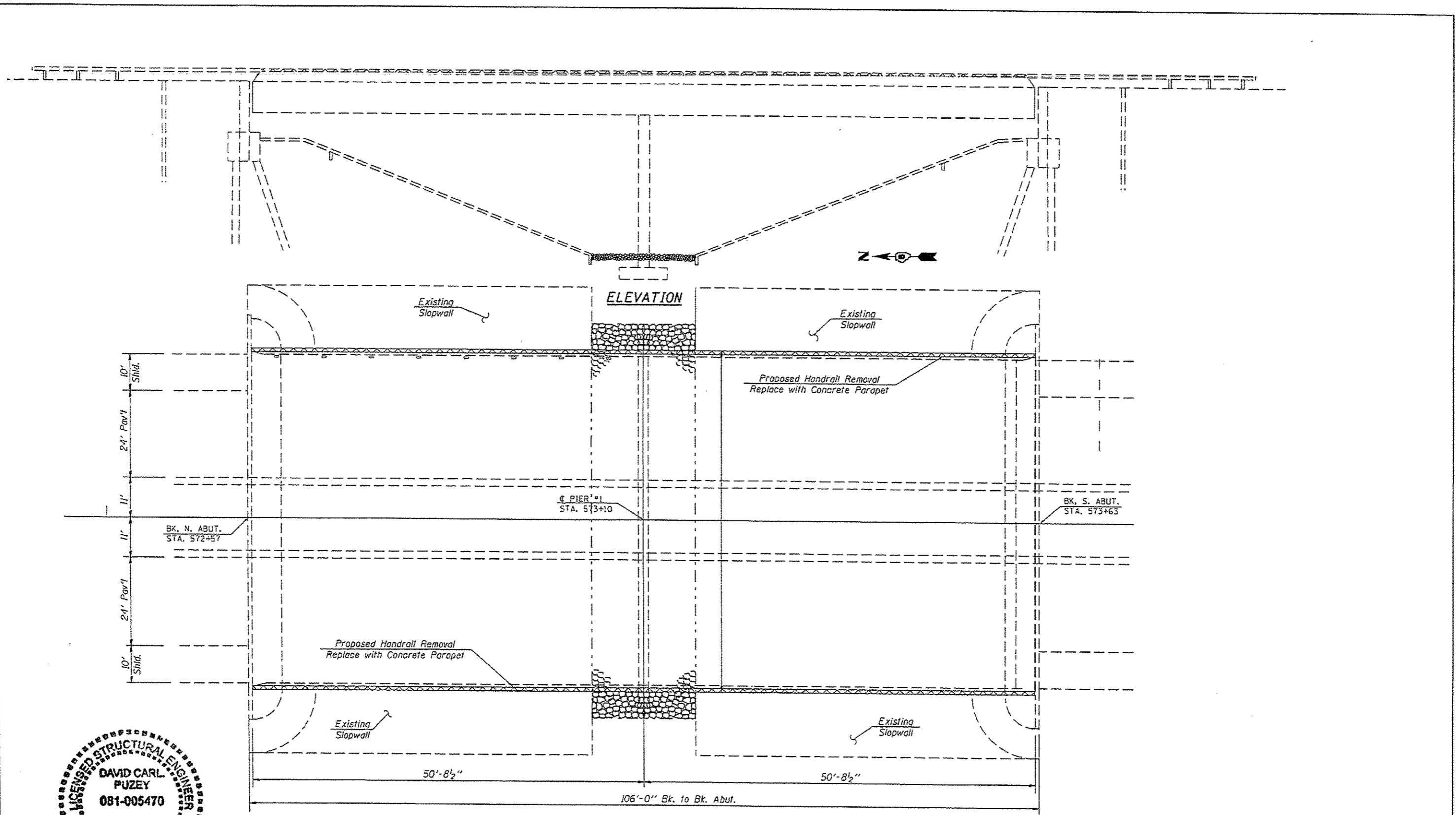
* SPECIALTY ITEM

**STATE OF ILLINOIS
 DEPARTMENT OF TRANSPORTATION
 DIVISION OF HIGHWAYS
 DISTRICT 6**

EXAMINED JANUARY 22nd 20 15

 ENGINEER OF OPERATIONS

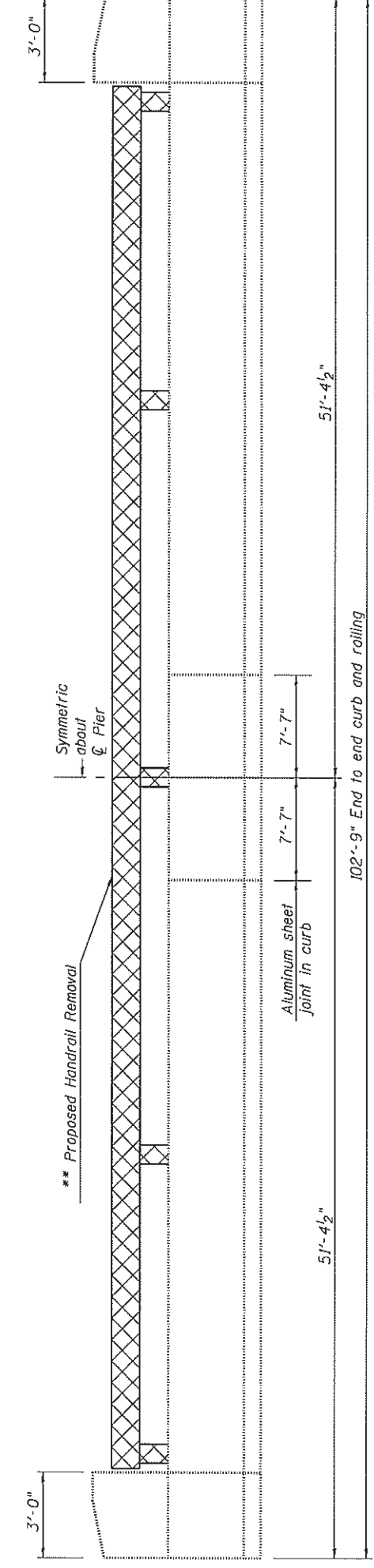
EXAMINED January 13 20 15

 ENGINEER OF PROJECT IMPLEMENTATION

EXAMINED January 13 20 15

 ENGINEER OF PROGRAM DEVELOPMENT

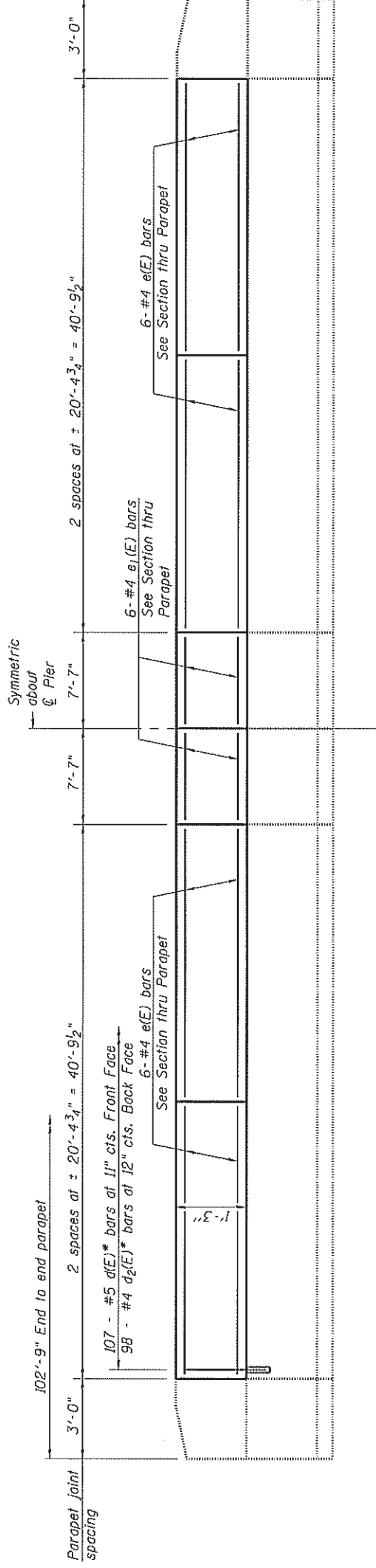


David Carl Puzey 3/1/16
Expires 11/30/16

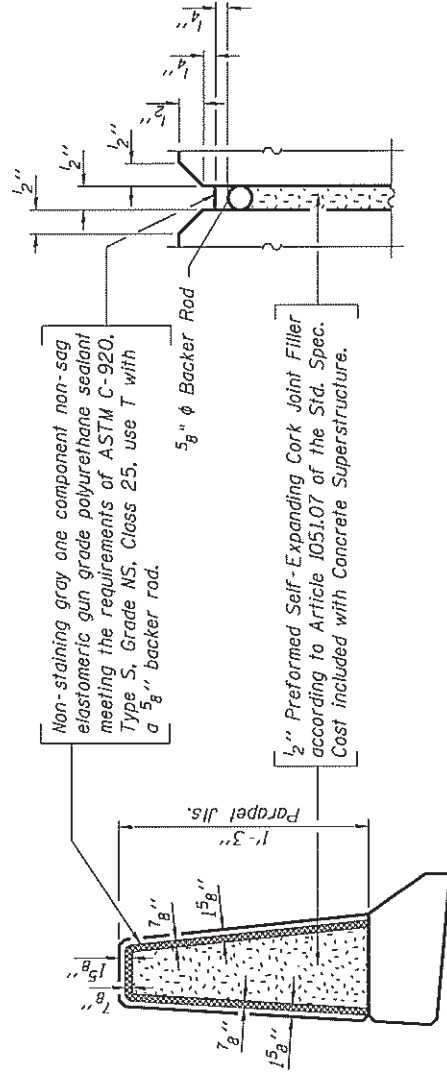
FILE NAME : S:\Bridges\Bridgplans\CA0172H61 - 084-0168 & 084-0169 parapet rehab\plan\sheet3.dgn	USER NAME : r.stroughsh	DESIGNED - <u>BMD</u>	REVISED - _____	STATE OF ILLINOIS DEPARTMENT OF TRANSPORTATION	SUPERSTRUCTURE DETAILS STRUCTURE NO. 084-0168		F.A.P. RTE. 65B	SECTION (102)-5	COUNTY SANGAMON	TOTAL SHEETS 6	SHEET NO. 3	
Default	PLOT SCALE : 1/22.0223 / in	CHECKED - _____	REVISED - _____		SCALE: _____	SHEET 3 OF 6 SHEETS	STA. _____ TO STA. _____	CONTRACT NO. 72H61				
	PLOT DATE : Jan-27-2015 09:44:11AM	DATE - <u>DAC</u>	REVISED - _____		ILLINOIS FED. AID PROJECT							



INSIDE ELEVATION OF EXISTING PARAPET



INSIDE ELEVATION OF PROPOSED PARAPET



PARAPET JOINT DETAILS

Note:
The last 5 feet of parapet on each end is to be transitioned to match existing end sections. Transition must happen smoothly with no snag points on the top and front face.

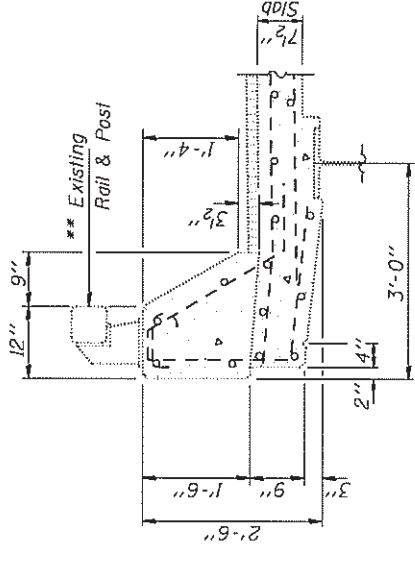
* Denotes bar to be epoxy grouted in accordance with Section 584 of the Standard Specifications. Minimum embedment is 9". Cost to be included with Reinforcement Bars, Epoxy Coated.

** Costs associated with removal and disposal of existing handrail shall be included in the cost for Concrete Superstructure.

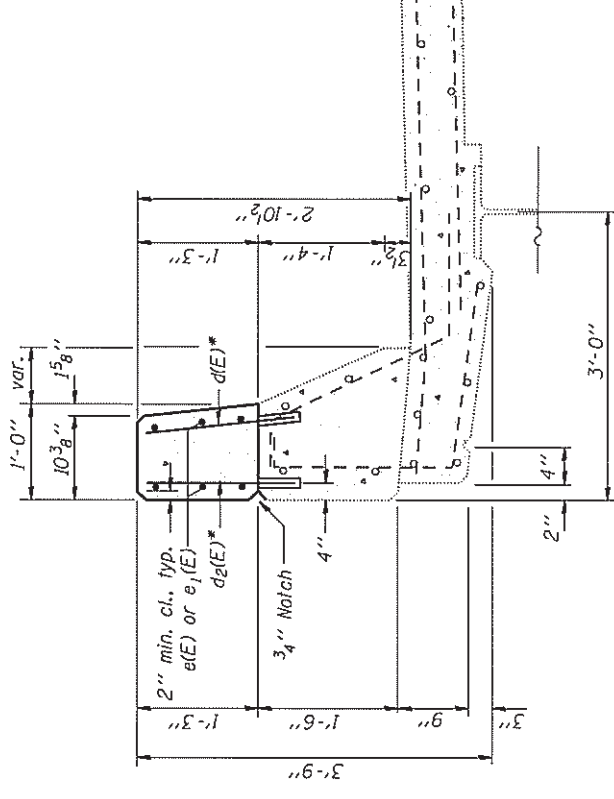
TWO PARAPET WALLS BILL OF MATERIAL

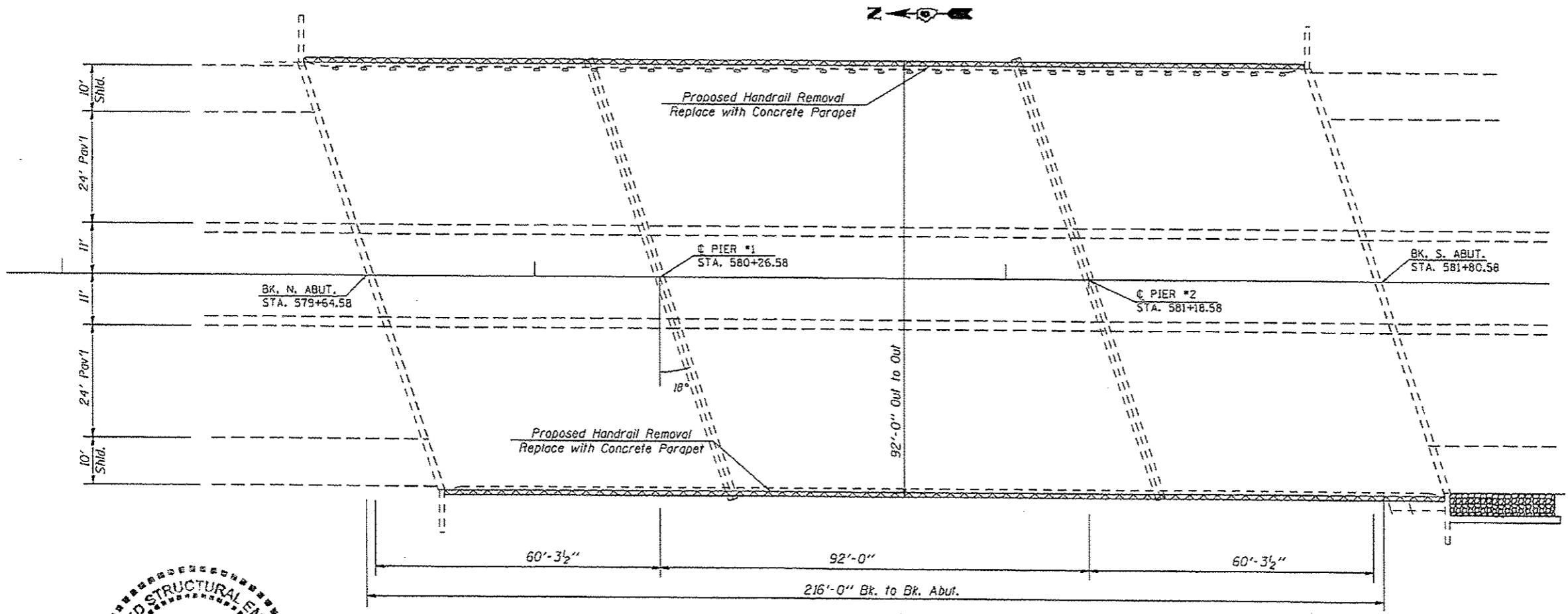
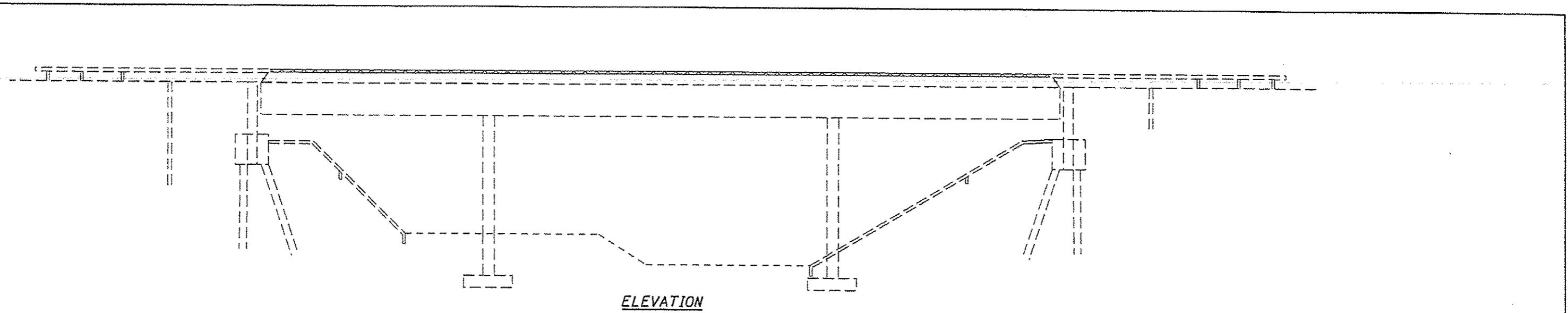
Bar	No.	Size	Length	Shape
d(E)	214	#5	1'-11"	
d2(E)	196	#4	1'-11"	
e(E)	48	#4	20'-0"	
e1(E)	24	#4	7'-3"	
Concrete Superstructure			Cu. Yd.	8.4
Reinforcement Bars, Epoxy Coated			Lbs.	1440
Barrier Wall Markers			Each	4

Reinforcement bars designated (E) shall be epoxy coated.
Barrier Wall Markers shall be placed on the top of wall only.



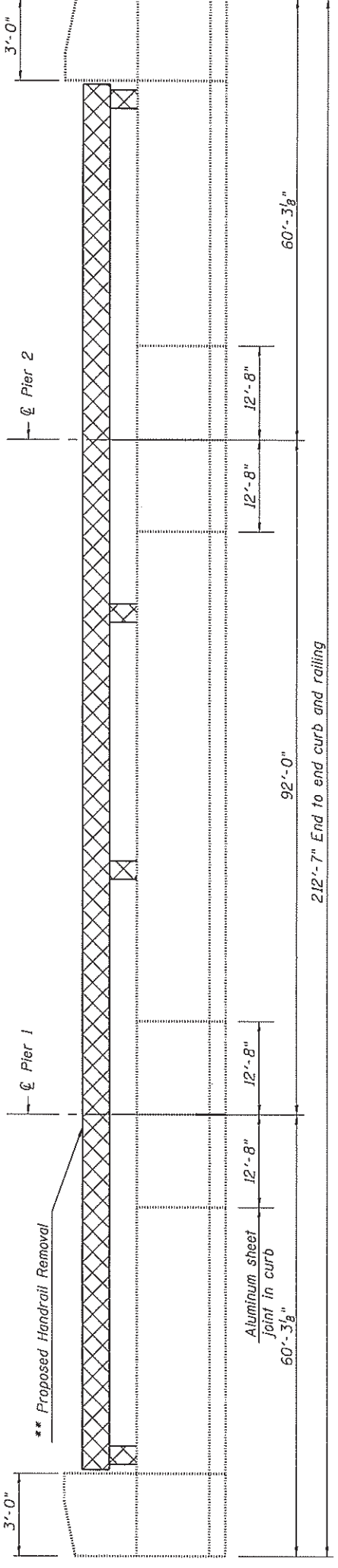
EXISTING CURB SECTION



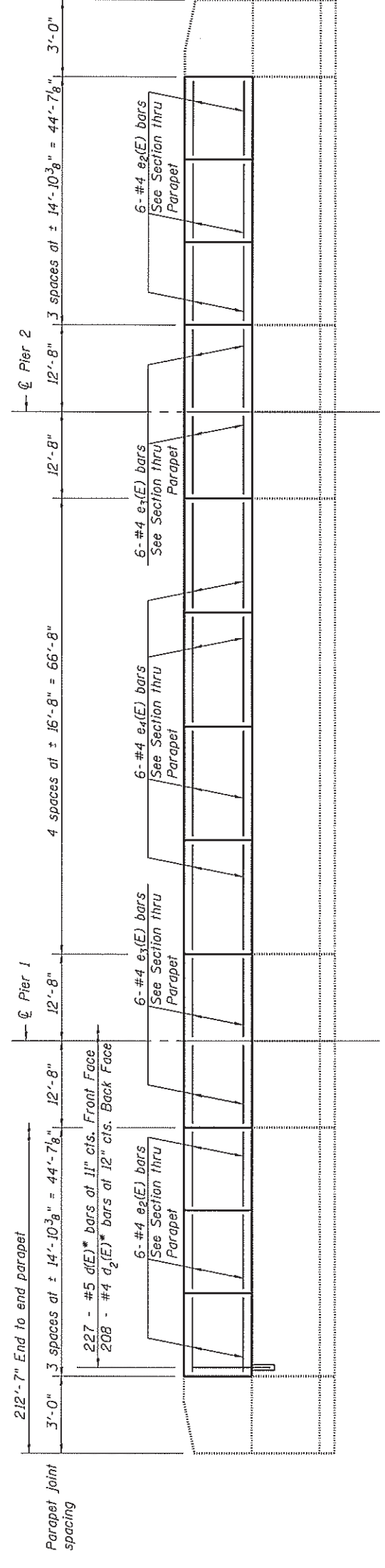


David Carl Puzey 3/1/16
Expires 1/30/16

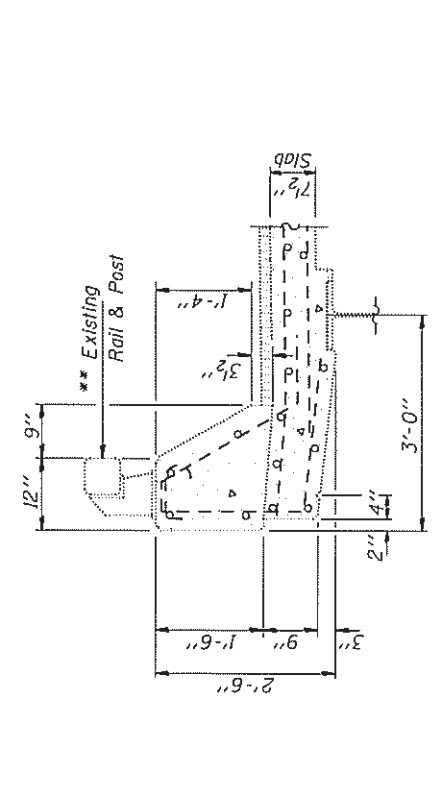
FILE NAME *	USER NAME * atoughan	DESIGNED - BHD	REVISED - _____	STATE OF ILLINOIS DEPARTMENT OF TRANSPORTATION	SUPERSTRUCTURE DETAILS STRUCTURE NO. 084-0169	F.A.P. RTE. #	SECTION	COUNTY	TOTAL SHEETS	SHEET NO.	
Default	S:\Bridges\Bridges\084-0169-01 - 084-0169 & 084-0169 parapet rehab\plans\sheet.dgn	DRAWN - _____	REVISED - _____			658	(1021)-5	SANGAMON	6	5	
	PLOT SCALE = 1/8" = 1'-0"	CHECKED - _____	REVISED - _____			SCALE: _____	SHEET 5	OF 6 SHEETS	STA. _____	TO STA. _____	CONTRACT NO. 72H61
	PLOT DATE = Jan-27-2015 08:48:26AM	DATE - DAC	REVISED - _____			ILLINOIS FED. AID PROJECT					



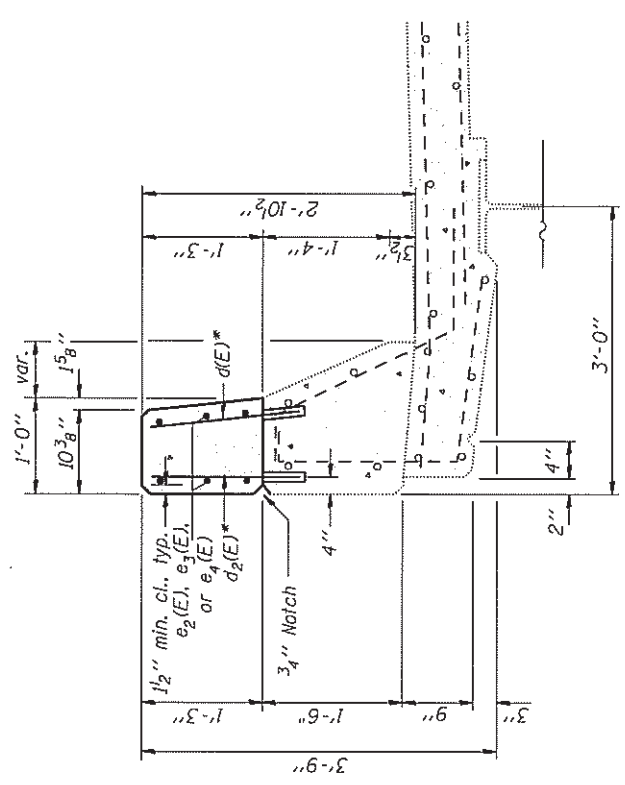
INSIDE ELEVATION OF EXISTING PARAPET



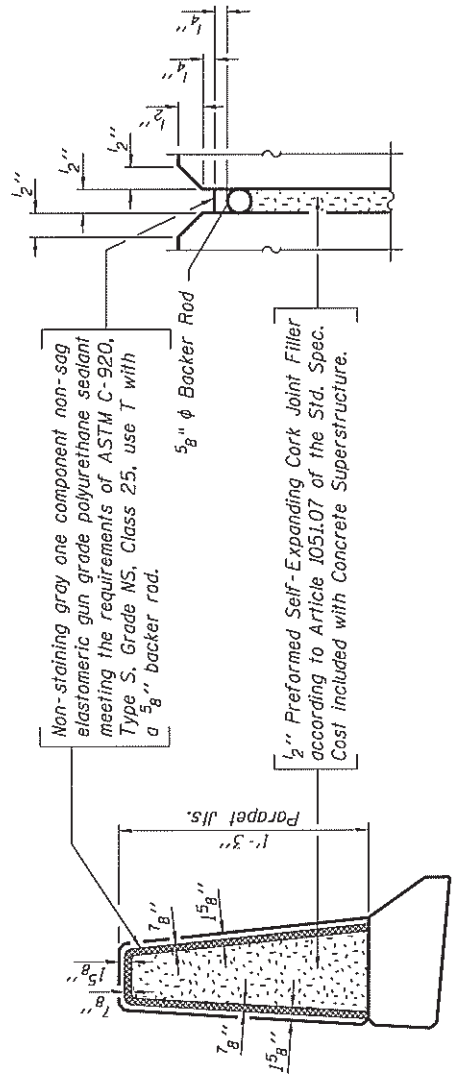
INSIDE ELEVATION OF PROPOSED PARAPET



EXISTING CURB SECTION



SECTION THRU PARAPET



PARAPET JOINT DETAILS

Note:
The last 5 feet of parapet on each end is to be transitioned to match existing end sections. Transition must happen smoothly with no snag points on the top and front face.

* Denotes bar to be epoxy grouted in accordance with Section 584 of the Standard Specifications. Minimum embedment is 9". Cast to be included with Reinforcement Bars, Epoxy Coated.

** Costs associated with removal and disposal of existing handrail shall be included in the cost for Concrete Superstructure.

**TWO PARAPET WALLS
BILL OF MATERIAL**

Bar	No.	Size	Length	Shape
d(E)	454	#5	1'-11"	
d ₂ (E)	416	#4	1'-11"	
e ₂ (E)	72	#4	14'-6"	
e ₃ (E)	48	#4	12'-4"	
e ₄ (E)	48	#4	16'-4"	
Concrete Superstructure			Cu. Yd.	17.8
Reinforcement Bars, Epoxy Coated			Lbs.	3060
Barrier Wall Markers			Each	6

Reinforcement bars designated (E) shall be epoxy coated.
Barrier Wall markers shall be placed on the top of wall only.