

STATE OF ILLINOIS
DEPARTMENT OF TRANSPORTATION
DIVISION OF HIGHWAYS

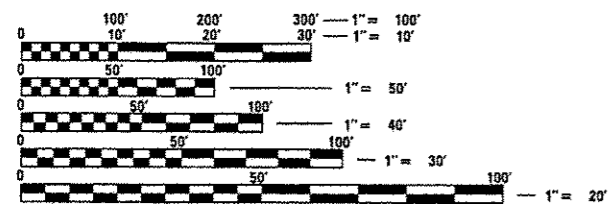
**PROPOSED
HIGHWAY PLANS**

FAS ROUTE 739 (ELDRED ROAD)
SECTION 501,502RS-6
OIL AND CHIP
GREENE COUNTY

C-98-044-15

F.A.S. RTE.	SECTION	COUNTY	TOTAL SHEETS	SHEET NO.
739	501,502RS-6	GREENE	5	1
		ILLINOIS	CONTRACT NO. 76H94	

FOR INDEX OF SHEETS, SEE SHEET NO. 2

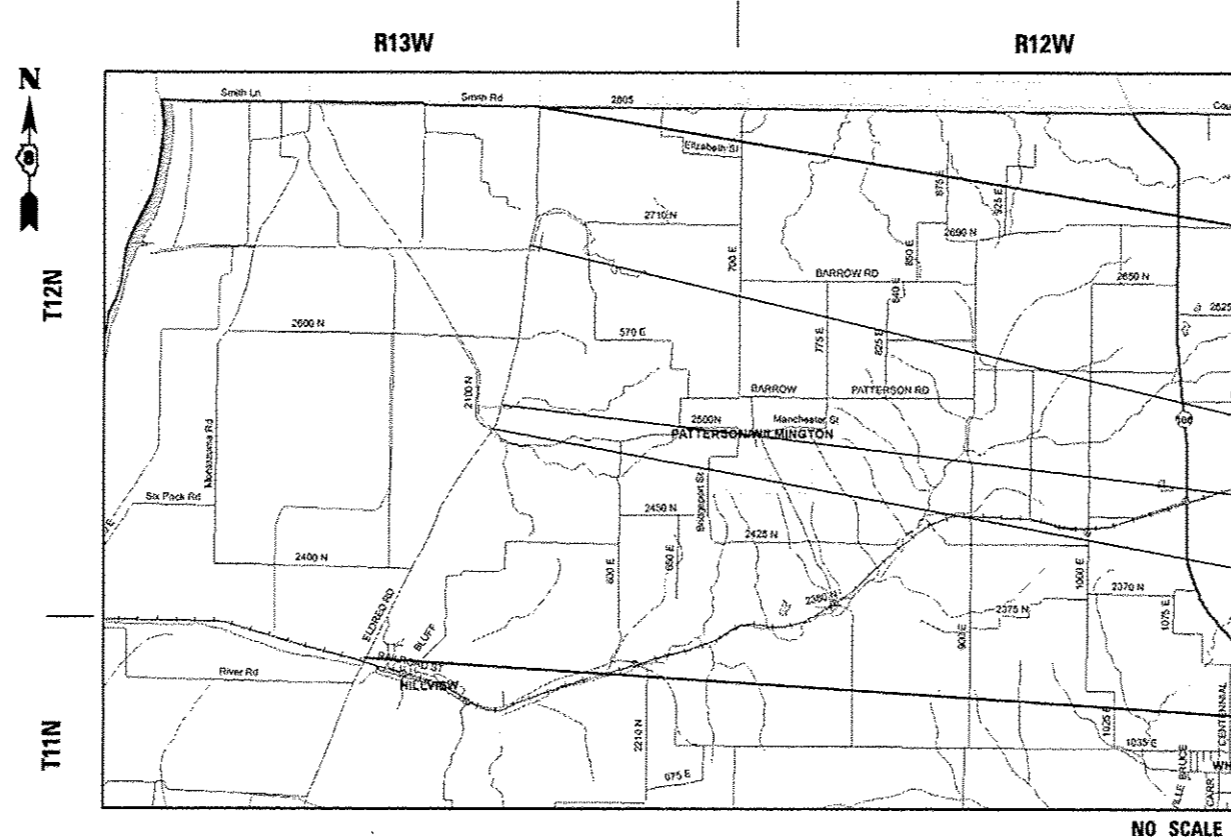


FULL SIZE PLANS HAVE BEEN PREPARED USING STANDARD ENGINEERING SCALES. REDUCED SIZED PLANS WILL NOT CONFORM TO STANDARD SCALES. IN MAKING MEASUREMENTS ON REDUCED PLANS, THE ABOVE SCALES MAY BE USED.

J.U.L.I.E.
JOINT UTILITY LOCATION INFORMATION FOR EXCAVATION
1-800-892-0123
OR 811

PROJECT ENGINEER: HERVE GELIN (618) 346-3179
PROJECT MANAGER: BILLIE OWEN (618) 346-3329

CONTRACT NO. 76H94



BEGIN PROJECT
GREENE COUNTY/SCOTT COUNTY LINE
LAT: 39.52131
LONG: -90.52004

- OMISSION SN 031-0003
- OMISSION SN 031-0004
- OMISSION SN 031-0005

END PROJECT
KCS RAILROAD
LAT: 39.45288
LONG: -90.54891

GROSS LENGTH = 27,034 FT. = 5.12 MILE
NET LENGTH = 26,717 FT. = 5.06 MILE

NO SCALE

STATE OF ILLINOIS
DEPARTMENT OF TRANSPORTATION
DIVISION OF HIGHWAYS

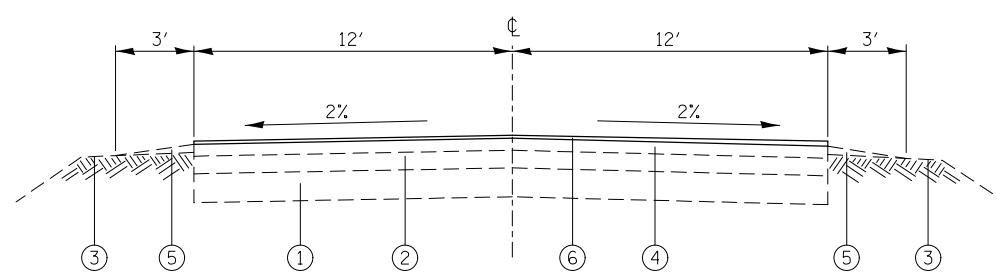
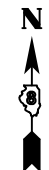
SUBMITTED *Feb 10 2016*

Jeffrey Z. K...
DEPUTY DIRECTOR OF HIGHWAYS, REGION 5 ENGINEER

March 13 2016
Marcus M. Addis PE
ENGINEER OF DESIGN AND ENVIRONMENT

March 13 2016
Amir Osman PE
DIRECTOR OF HIGHWAYS, CHIEF ENGINEER

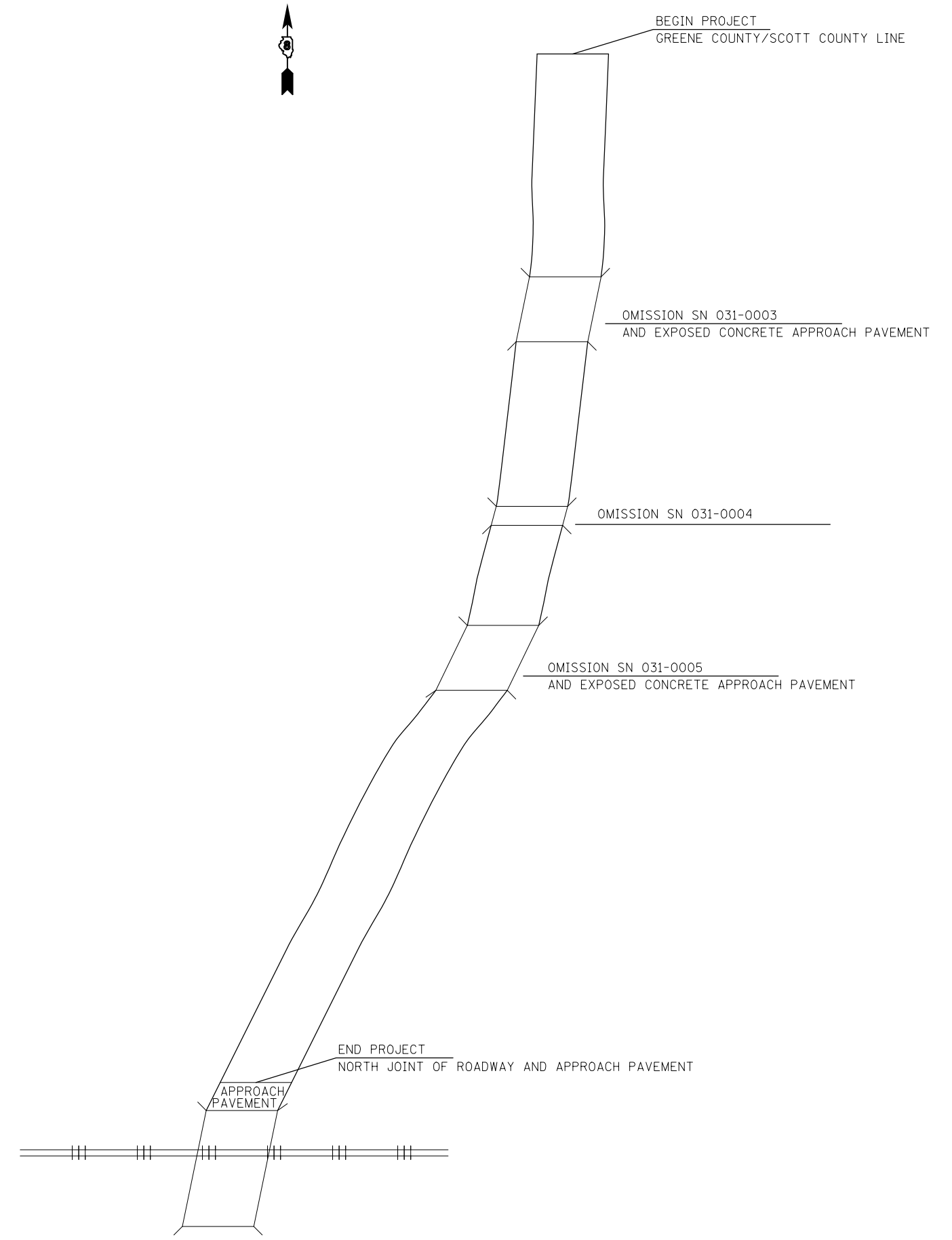
PRINTED BY THE AUTHORITY
OF THE STATE OF ILLINOIS



TYPICAL SECTION
MI. 0.00 TO MI. 5.12

LEGEND

- ① EXISTING PAVEMENT
- ② EXISTING BITUMINOUS A-3 MODIFIED TREATMENT, VARIES
- ③ EXISTING EARTH SHOULDER
- ④ EXISTING HOT-MIX ASPHALT SURFACE COURSE, VARIES 2 1/4" TO 7 1/2"
- ⑤ EXISTING AGGREGATE WEDGE SHOULDER, TYPE B
- ⑥ PROPOSED HOT-MIX ASPHALT SURFACE TREATMENT, CLASS A-2



FILE NAME =	USER NAME = chollandeske	DESIGNED -	REVISED -	STATE OF ILLINOIS DEPARTMENT OF TRANSPORTATION	TYPICAL SECTIONS LOCATION MAP				F.A.S. RTE.	SECTION	COUNTY	TOTAL SHEETS	SHEET NO.
pw:\IL\084EBIDINTEG.illinois.gov\PWIDOT\Documents\IDOT Offices\District 8\Projects\0876\Drawings\EA\Drawings\0876H94-typical.dwg		CHECKED -	REVISED -		739	501,502RS-6	GREENE	5	4				
Default	PLOT SCALE = 100.0000' / 1in.	DATE -	REVISED -		CONTRACT NO. 76H94								
	PLOT DATE = 2/10/2016				ILLINOIS FED. AID PROJECT								
				SCALE: NONE	SHEET	OF	SHEETS	STA.	TO	STA.			

