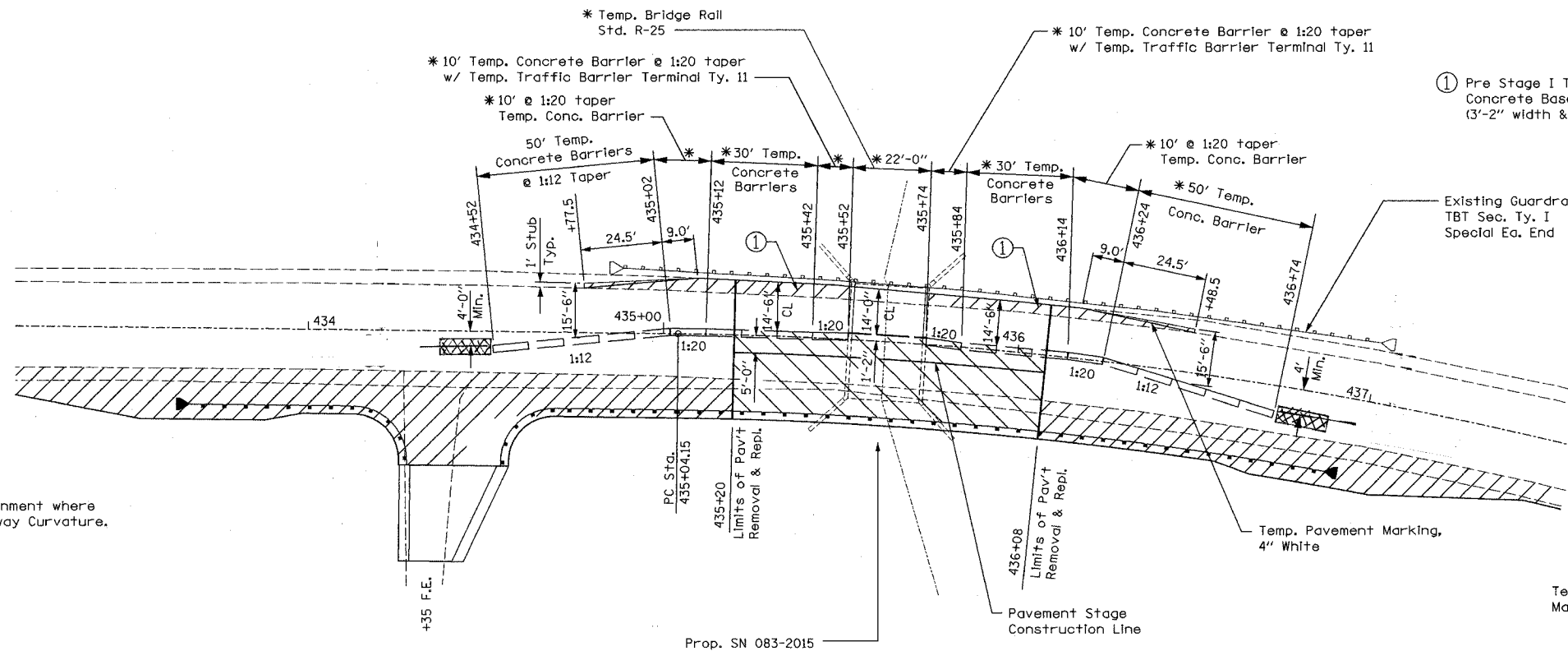
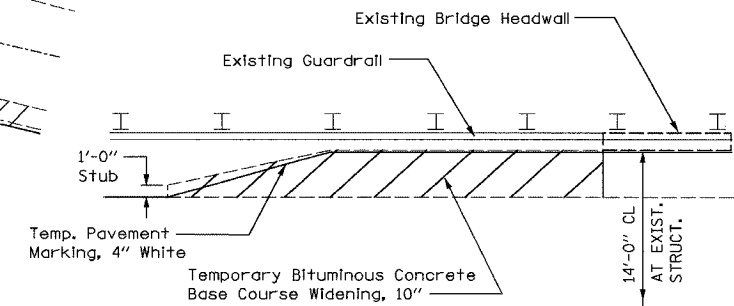
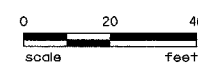


F.A.P. RTE.	SECTION	COUNTY	TOTAL SHEETS	SHEET NO.
778	(2-B)-1	SALINE	74	9
FED. ROAD DIST. NO. 9 ILLINOIS FED. AID PROJECT				

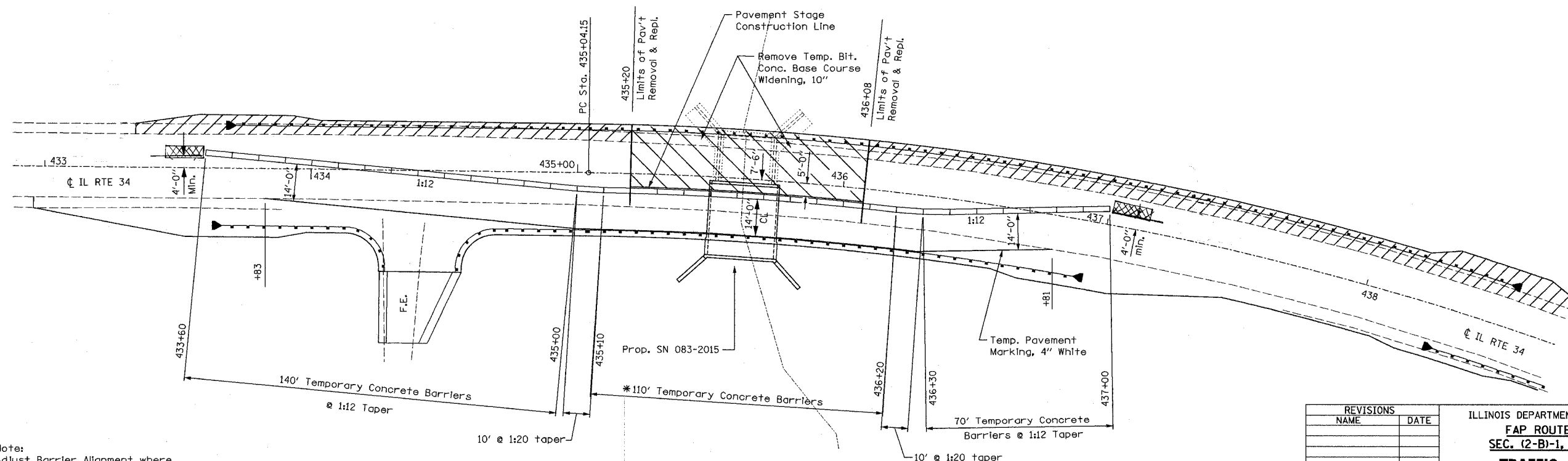


**STAGE I @ SN 083-2015**

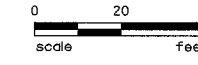
① Pre Stage I Temporary Bituminous Concrete Base Course Widening, 10" (3'-2" width & varies to 1'-0" Stub)



**TEMPORARY SHOULDER WIDENING DETAIL**



**STAGE II @ SN 083-2015**



REVISIONS	
NAME	DATE

ILLINOIS DEPARTMENT OF TRANSPORTATION  
 FAP ROUTE 778 (IL 34)  
 SEC. (2-B)-1, SALINE COUNTY  
**TRAFFIC CONTROL &  
 CONSTRUCTION STAGING DETAILS**

SCALE: VERT. \_\_\_\_\_  
 HORIZ. \_\_\_\_\_  
 DATE \_\_\_\_\_ DRAWN BY \_\_\_\_\_  
 CHECKED BY \_\_\_\_\_

Note:  
 \* Adjust Barrier Alignment where Indicated to Roadway Curvature.

Note:  
 \* Adjust Barrier Alignment where Indicated to Roadway Curvature.