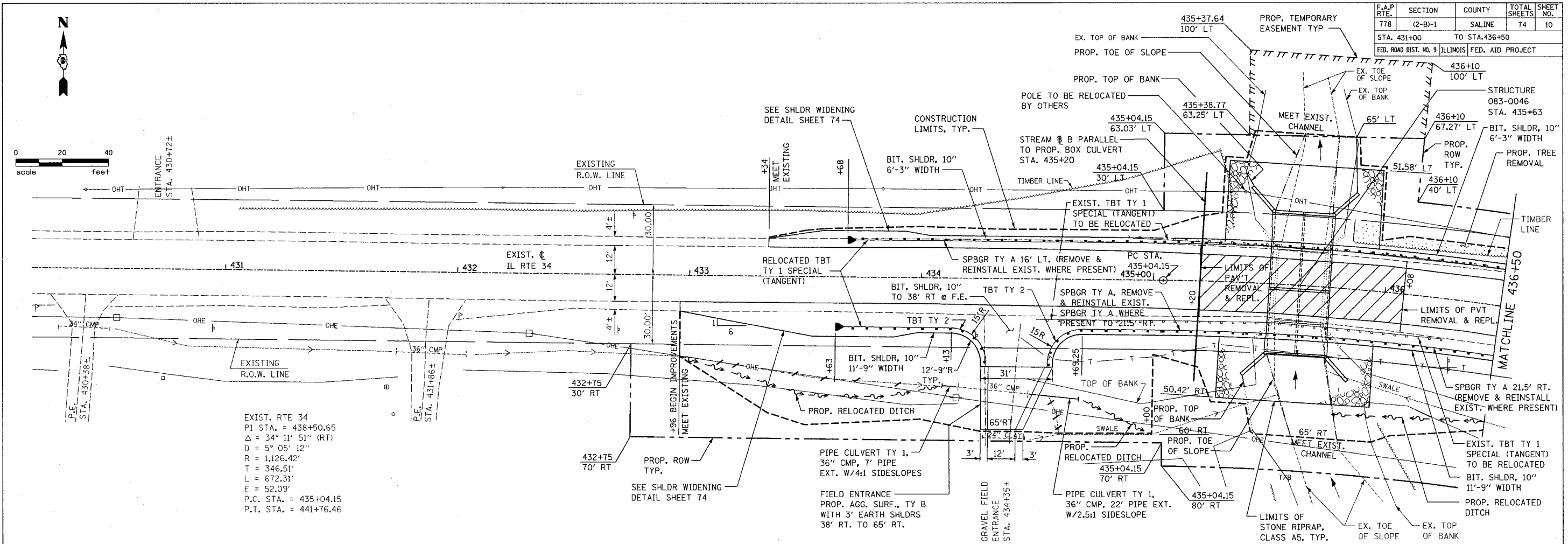
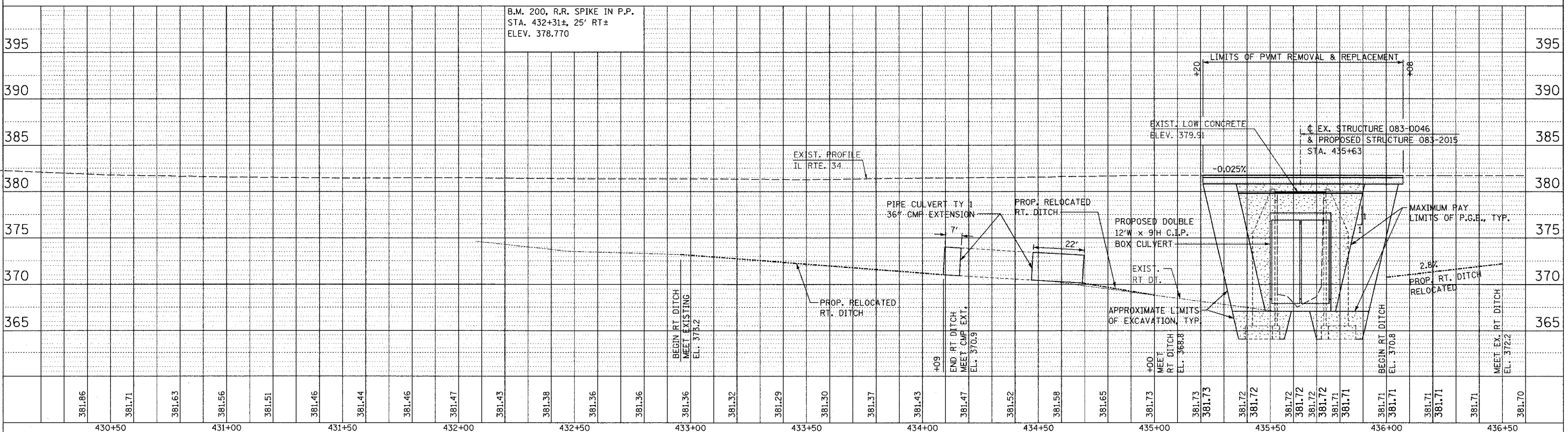


F.A.P. RTE.	SECTION	COUNTY	TOTAL SHEETS	SHEET NO.
778	(2-B)-1	SALINE	74	10
STA. 431+00 TO STA. 436+50				
FED. ROAD DIST. NO. 9 ILLINOIS FED. AID PROJECT				



EXIST. RTE 34
 PI STA. = 438+50.65
 $\Delta = 34^\circ 11' 51''$ (RT)
 $D = 5^\circ 05' 12''$
 $R = 1,126.42'$
 $T = 346.51'$
 $L = 672.31'$
 $E = 52.09'$
 P.C. STA. = 435+04.15
 P.T. STA. = 441+76.46

B.M. 200, R.R. SPIKE IN P.P.
 STA. 432+31±, 25' RT±
 ELEV. 378.770



DATE	BY	REVISION
		PLAN SURVEYED, PLOTTED, CHECKED, REVISIONS, DATE, FILE NAME

DATE	BY	REVISION
		PROFILE SURVEYED, PLOTTED, CHECKED, REVISIONS, DATE, FILE NAME

IL 34 PLAN & PROFILE