

Bench Mark: R.R. Spike In P.P. Sta. 432+31±, 25' Rt. El. 378.77

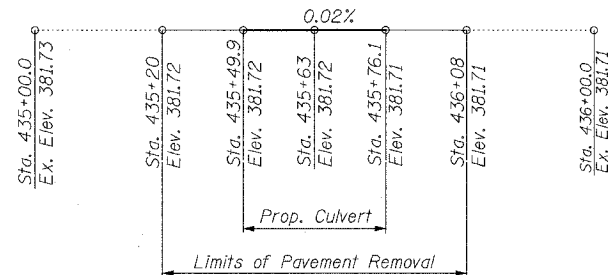
Existing Structure: S.N. 083-0046 built in 1923 as a single span closed abutment structure with a reinforced concrete slab measuring 20'-0" clear face to face of abutments, and out to out deck width of 32'-4", and 0° skew. Structure to be removed and replaced.

Traffic to be maintained utilizing stage construction

No Salvage

STATE OF ILLINOIS
DEPARTMENT OF TRANSPORTATION

| | | | | | |
|-----------------------|----------|------------------|--------------|-----------|-------------|
| ROUTE NO. | SECTION | COUNTY | TOTAL SHEETS | SHEET NO. | SHEET NO. 1 |
| F.A.P. 778 | (2-B)-1 | SALINE | 74 | 13 | 8 SHEETS |
| FED. ROAD DIST. NO. 1 | ILLINOIS | FED. AID PROJECT | | | |



PROFILE GRADE
(Along Centerline of Roadway)

EXIST. RTE 34
PI STA. = 438+50.65
Δ = 34° 11' 51" (RT)
D = 5° 05' 12"
R = 1,126.42'
T = 346.51'
L = 672.31'
E = 52.09'
P.C. STA. = 435+04.15
P.T. STA. = 441+76.46

HORIZONTAL CURVE DATA

LOADING HS20-44

Allow 50#/sq ft for future wearing surface.

DESIGN SPECIFICATIONS

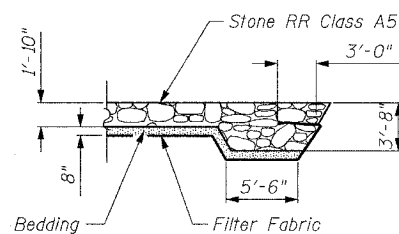
AASHTO (1996) with 1997 thru 2002 Interims

DESIGN STRESSES

FIELD UNITS
f'c = 3,500 psi
fy = 60,000 psi (Reinf.)

STATION 435+63
BUILT 200 BY
STATE OF ILLINOIS
F.A.P. 778 SEC. (2-B)-1
LOADING HS20
STR. NO. 083-2015

NAME PLATE
See Std. 515001

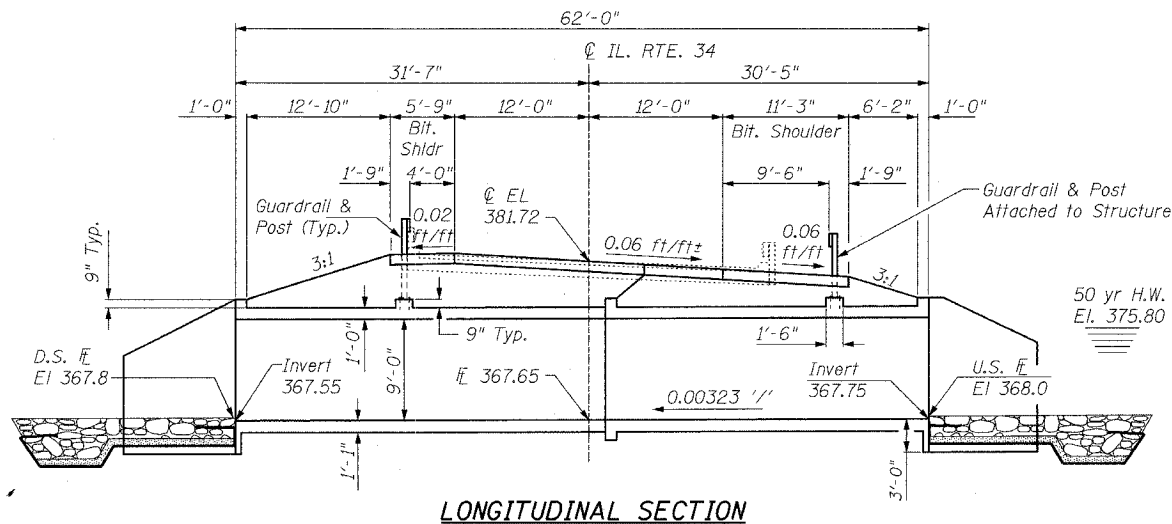


SECTION A-A FLANK DETAIL

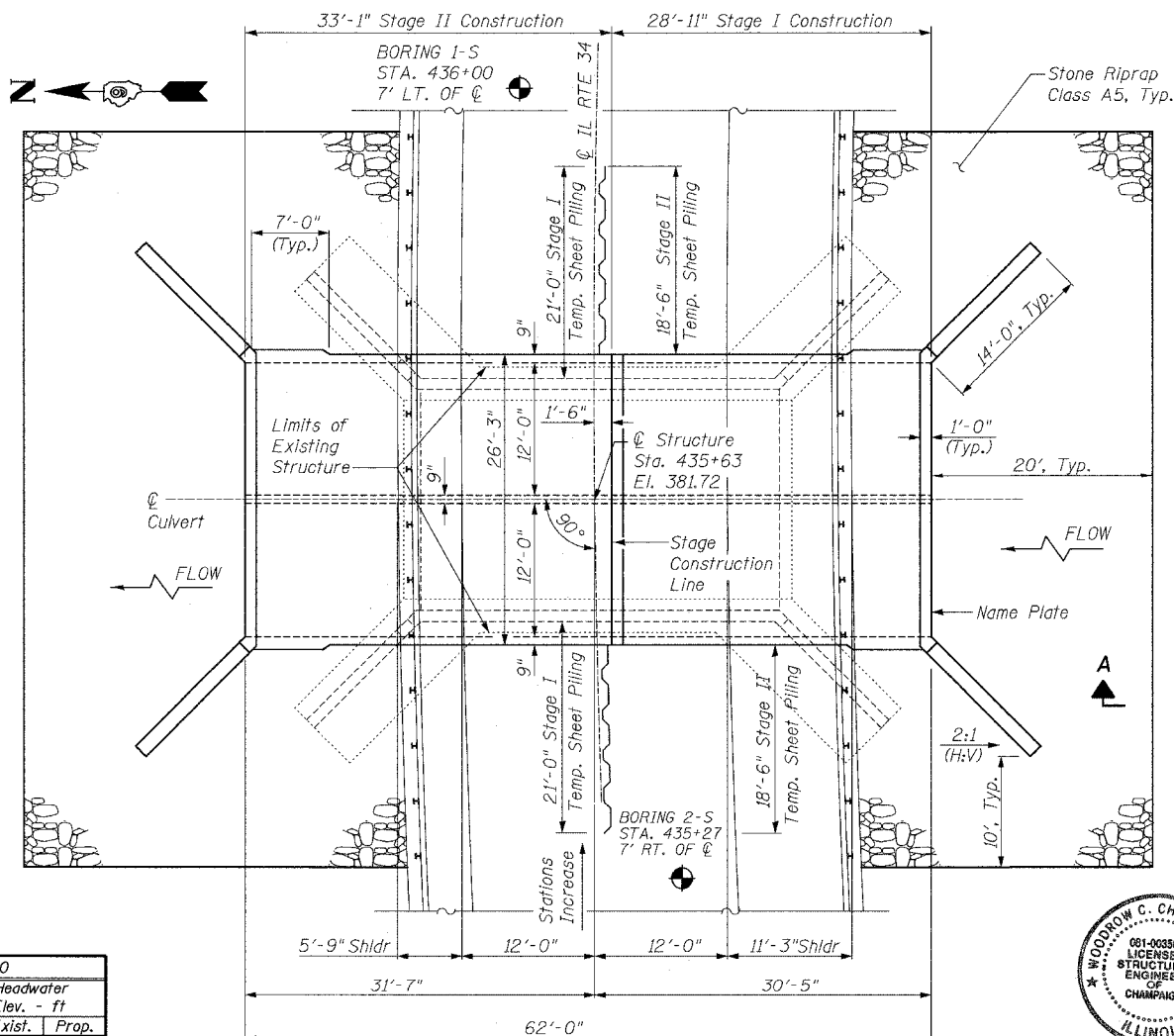
WATERWAY INFORMATION

| | | | |
|----------|--|-----|--|
| DESIGNED | | SBM | |
| CHECKED | | KMN | |
| DRAWN | | MSJ | |
| CHECKED | | WCC | |

| Drainage Area = 1.17 mi ² | | Low Grade Elev. 381.29 ft | | Sta. 440+40 | | | | | |
|--------------------------------------|-----------|---------------------------|----------------|-------------|-----------|-------|----------------------|--------|--------|
| Flood | Freq. Yr. | Q ft ³ /s | Opening Sq. ft | | Head - ft | | Headwater Elev. - ft | | |
| | | | Exist. | Prop. | Exist. | Prop. | Exist. | Prop. | |
| Design | 50 | 1070 | 145.5 | 187.2 | 375.80 | 2.40 | 0.80 | 378.20 | 376.60 |
| Base | 100 | 1230 | 149.5 | 192.0 | 376.00 | 2.10 | 1.00 | 378.10 | 377.00 |
| Overtopping | | | | | | | | | |
| Max. Calc. | 500 | 1630 | 157.5 | 201.6 | 376.40 | 3.60 | 2.10 | 380.00 | 378.50 |



LONGITUDINAL SECTION



PLAN

GENERAL NOTES

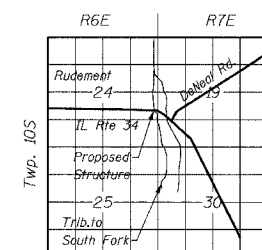
1. Reinforcement bars shall conform to the requirements of AASHTO M 31, M 42 or M 53 Grade 60.
2. Layout of slope protection system may be varied in the field to suit ground conditions as directed by the Engineer.
3. All construction joints shall be bonded.
4. Excavation behind existing abutment walls shall be done before removing the existing superstructure. The contractor shall sawcut the existing abutments at the stage removal line before Stage I removal.
5. Precast alternate is not allowed.

TOTAL BILL OF MATERIAL

| ITEM | UNIT | TOTAL |
|---|---------|-------|
| Stone Riprap, Class A5 | Sq. Yd. | 409 |
| Filter Fabric for use with Riprap | Sq. Yd. | 409 |
| Removal of Existing Structures | Each | 1 |
| Reinforcement Bars | Pound | 38610 |
| Temporary Sheet Piling | Sq. Ft. | 1053 |
| Temporary Bridge Rail | Foot | 22 |
| Name Plates | Each | 1 |
| Concrete Box Culverts | Cu. Yd. | 210.5 |
| Steel Plate Beam Guardrail Attached to Structures | Foot | 69 |
| Bar Splicers | Each | 135 |

APPROVED
FOR STRUCTURAL ADEQUACY ONLY

Ralph E. Anderson
ENGINEER OF BRIDGES AND STRUCTURES



LOCATION SKETCH



Woodrow C. Chenaault, Jr. 11-19-03
WOODROW C. CHENAULT, JR., S.E.
ILLINOIS REGISTERED STRUCTURAL ENGINEER
ILLINOIS NO. 3567 EXPIRES NOVEMBER 30, 2004

GENERAL PLAN & ELEVATION
IL. ROUTE 34 OVER UNNAMED TRIBUTARY
TO SOUTH FORK SALINE RIVER
FAP ROUTE 778 - SEC. (2-B)-1
SALINE COUNTY
STATION 435+63
STRUCTURE NO. 083-2015