

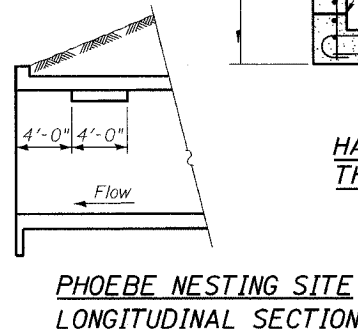
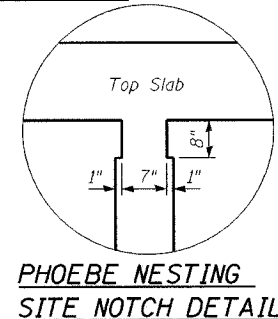
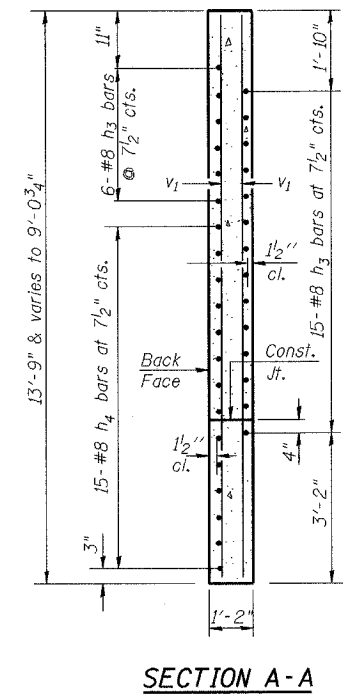
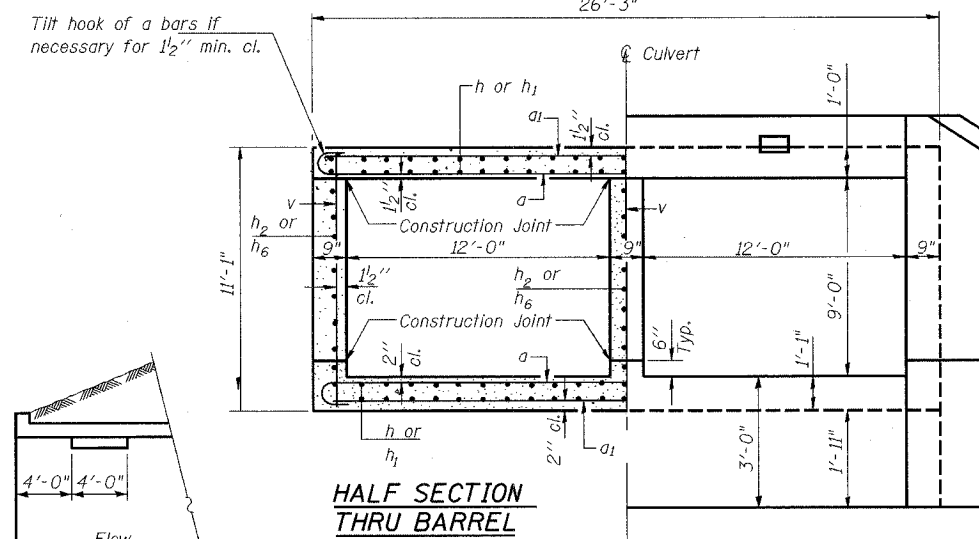
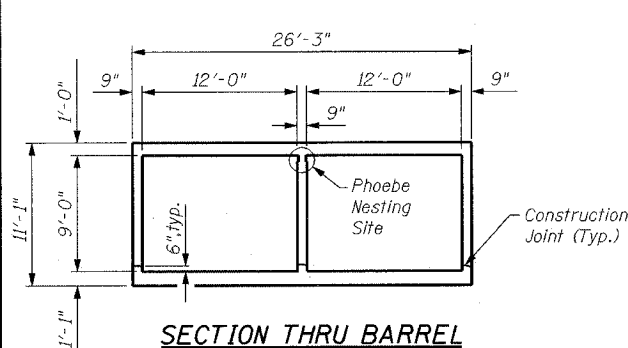
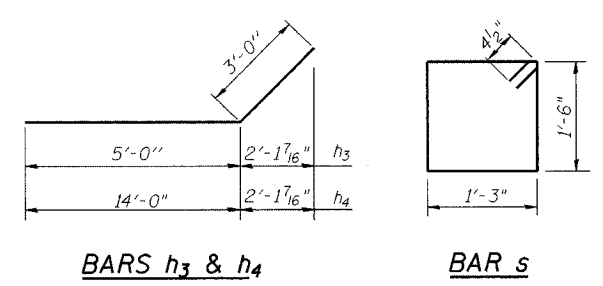
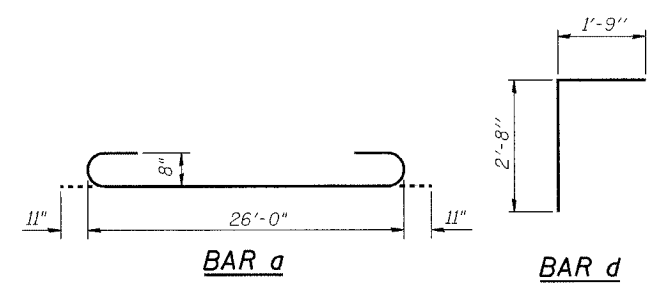
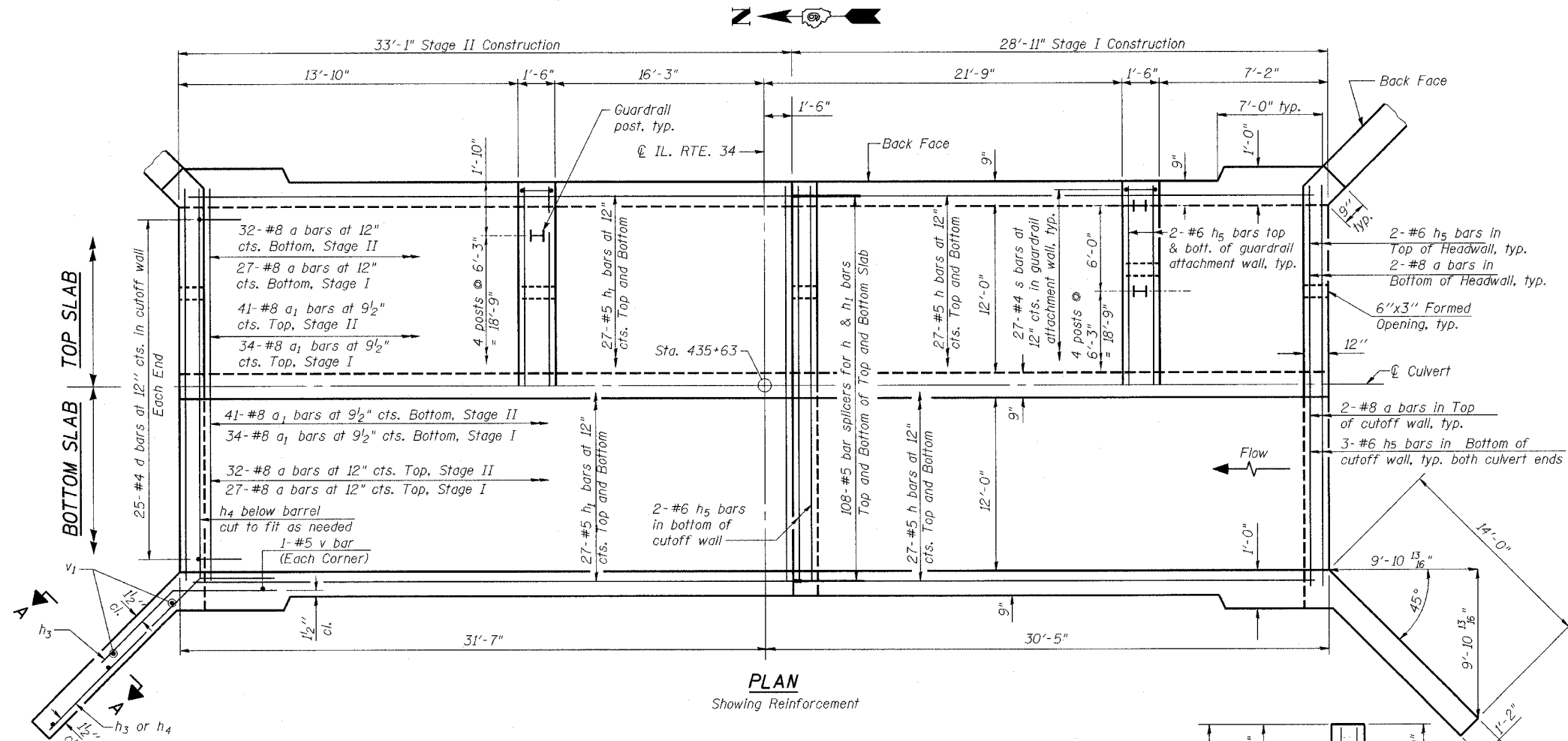
STATE OF ILLINOIS
DEPARTMENT OF TRANSPORTATION

ROUTE NO. F.A.P. 778	SECTION (2-B)-1	COUNTY SALINE	TOTAL SHEETS 74	SHEET 17	SHEET NO. 5 8 SHEETS
FED. ROAD DIST. NO. 4		ILLINOIS	FED. AID PROJECT		

Note:
A distance of half the length of the wingwall but not less than six (6) feet of the barrel shall be poured monolithically with the wingwalls.
See Sheet 6 for details of headwall & guardrail attachment wall reinforcement.

BILL OF MATERIAL

Bar	No.	Size	Length	Shape
a	134	#8	27'-10"	
a ₁	150	#8	25'-3"	
d	50	#4	4'-5"	
h	108	#5	28'-7"	
h ₁	108	#5	32'-9"	
h ₂	27	#6	28'-7"	
h ₃	84	#8	8'-0"	
h ₄	60	#8	17'-0"	
h ₅	22	#6	25'-11"	
h ₆	27	#6	32'-9"	
v	283	#5	10'-9"	
v ₁	16	#5	13'-5"	
s	54	#4	6'-3"	
Concrete Box Culverts			Cu. Yd.	210.5
Reinforcement Bars			Pound	38610



BOX CULVERT SECTIONS & DETAILS
IL. ROUTE 34 OVER UNNAMED TRIBUTARY
TO SOUTH FORK SALINE RIVER
FAP ROUTE 778 - SEC. (2-B)-1
SALINE COUNTY
STATION 435+63
STRUCTURE NO. 083-2015

DESIGNED	SBM
CHECKED	KMN
DRAWN	MSJ
CHECKED	WCC