

F.A.P. RTE.	SECTION	COUNTY	TOTAL SHEETS	SHEET NO.
778	(2B-1)-1	SALINE	74	29
FED. ROAD DIST. NO. 9 ILLINOIS FED. AID PROJECT				

**LEGEND**

- ① EXIST. BIT. CONC. SURFACE CSE., 8 3/4"
- ② EXIST. P.C.C. PAVEMENT
- ③ EXIST. BIT. BASE COURSE WIDENING, 9"
- ④ EXIST. P.C.C. GUTTER
- ⑤ EXIST. AGGREGATE WEDGE SHOULDER
- ⑥ PROP. BIT. SHOULDER, 10"
- ⑦ PROP. BIT. CONC. SURFACE CSE. SUPERPAVE, MIX C, N90, 1 1/2"
- ⑧ PROP. BIT. CONC. BINDER CSE. SUPERPAVE, IL-19, N90, 1 1/2"
- ⑨ PROP. P.C.C. BASE COURSE, 9 1/2"
- ⑩ PROP. POROUS GRANULAR EMBANKMENT
- ⑪ PROP. AGGREGATE SHOULDER, TYPE B, 6"
- ⑫ PROP. AGGREGATE BASE CSE., TYPE A, OUTSIDE LIMITS OF EXIST. PAVEMENT
- ⑬ PROP. AGGREGATE BASE CSE., TYPE A, VAR. DEPTH PLACED OVER EXIST. PAVEMENT

NOTE:  
CLEAR ZONE FOR OBSTRUCTION REMOVAL ON ROUTE 34 IS 18 FT BEYOND EDGE OF PAVEMENT EXTENDING OUT TO WINGWALLS AT PROPOSED BOX CULVERT.  
ON DENEAL RD CLEAR ZONE EXTENDS TO TOP OF PROPOSED DITCH BACKSLOPE.

**BITUMINOUS MIXTURE REQUIREMENTS**

LOCATION(S):	BITUMINOUS SURFACE COURSE
MIXTURE USE(S):	BITUMINOUS CONCRETE SURFACE COURSE, SUPERPAVE, MIX C, N 90
AC/PG:	PG64-22
RAP % (MAX):	10
DESIGN AIR VOIDS:	4.0%, 90 GYRATION SUPERPAVE DESIGN
MIXTURE COMPOSITION (GRADATION MIXTURE):	IL-9.5mm OR IL 12.5mm
FRICTION AGGREGATE:	C SURFACE

LOCATION(S):	BITUMINOUS BINDER COURSE
MIXTURE USE(S):	BITUMINOUS CONCRETE BINDER COURSE, SUPERPAVE, N 90, IL-19.0
AC/PG:	PG64-22
RAP % (MAX):	10
DESIGN AIR VOIDS:	4.0%, 90 GYRATION SUPERPAVE DESIGN
MIXTURE COMPOSITION (GRADATION MIXTURE):	IL-19.0
FRICTION AGGREGATE:	NONE

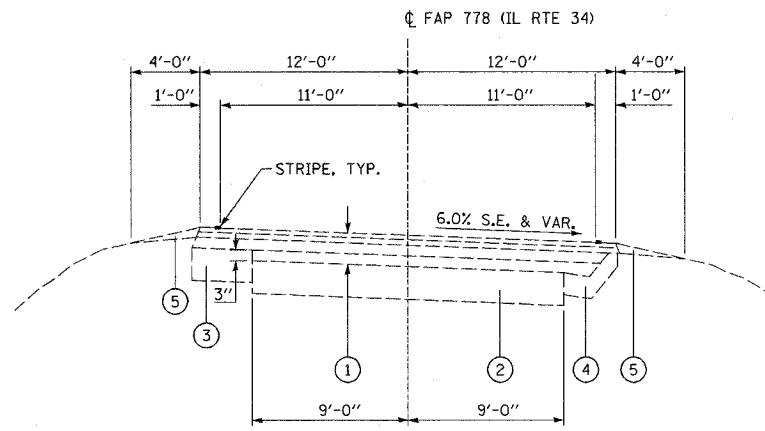
LOCATION(S):	BITUMINOUS SHOULDERS, 10"
MIXTURE USE(S):	BITUMINOUS SHOULDERS, SUPERPAVE
AC/PG:	PG58-22
RAP % (MAX):	50
DESIGN AIR VOIDS:	2.0%, 30 GYRATION SUPERPAVE DESIGN
MIXTURE COMPOSITION (GRADATION MIXTURE):	BITUMINOUS AGGREGATE MIXTURE, SUPERPAVE
FRICTION AGGREGATE:	NONE

LOCATION(S):	BITUMINOUS CONCRETE BASE COURSE WIDENING, 10"
MIXTURE USE(S):	BITUMINOUS CONCRETE BASE COURSE WIDENING, SUPERPAVE
AC/PG:	PG64-22
RAP % (MAX):	50
DESIGN AIR VOIDS:	2.0%, 50 GYRATION SUPERPAVE DESIGN
MIXTURE COMPOSITION (GRADATION MIXTURE):	BITUMINOUS BASE COURSE, SUPERPAVE
FRICTION AGGREGATE:	NONE

REVISIONS	
NAME	DATE

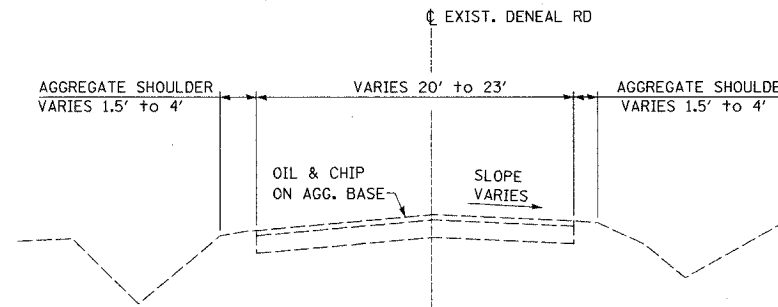
ILLINOIS DEPARTMENT OF TRANSPORTATION  
**FAP ROUTE 778 (IL 34)**  
**SEC. (2B-1)-1, SALINE COUNTY**  
**EXISTING & PROPOSED**  
**TYPICAL SECTIONS**

SCALE: VERT. \_\_\_\_\_  
HORIZ. \_\_\_\_\_  
DATE \_\_\_\_\_ DRAWN BY \_\_\_\_\_  
CHECKED BY \_\_\_\_\_

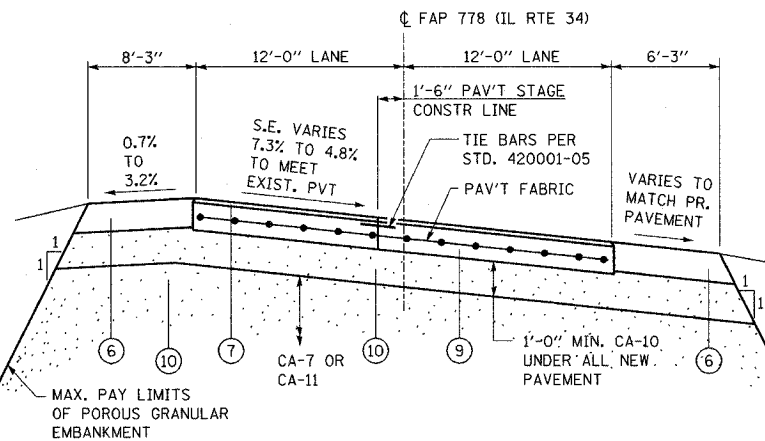


**EXISTING IL RTE 34 SECTION**  
LOOKING EAST

STA. 435+75± TO STA. 441+38±  
STA. 441+63± TO STA. 444+59

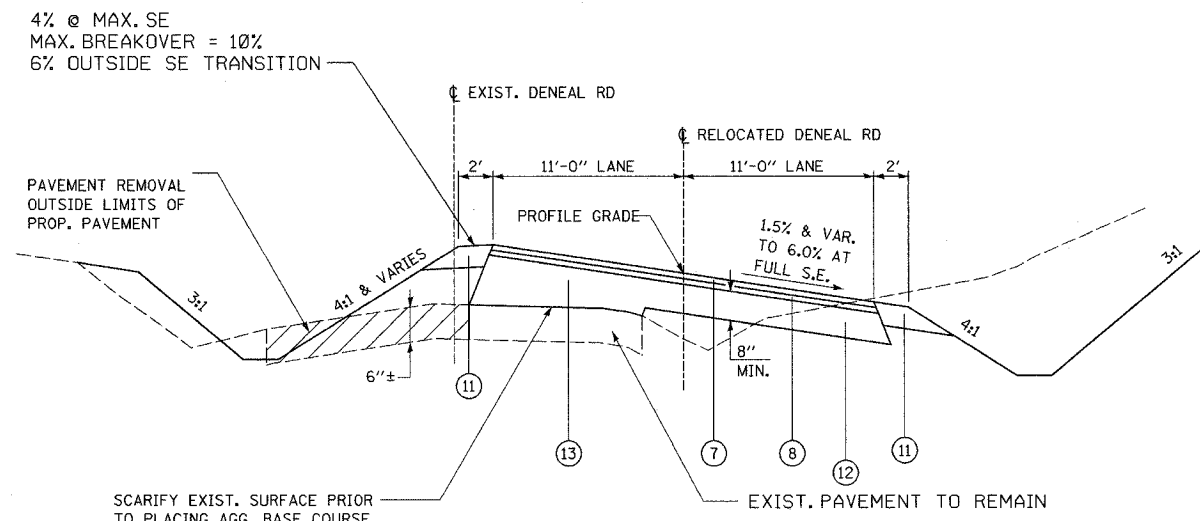


**EXISTING DENEAL ROAD SECTION**



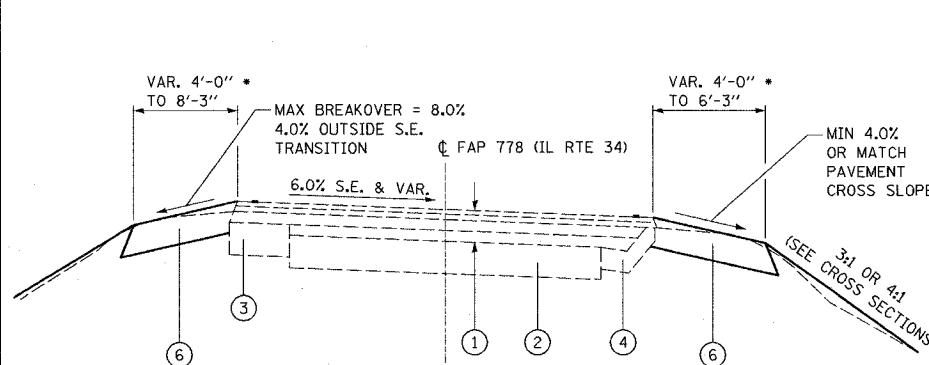
**PROPOSED IL RTE 34 SECTION**  
EXISTING PAVEMENT & SHOULDERS REMOVAL & REPLACEMENT  
LOOKING EAST

STA. 441+16 TO STA. 441+64



**PROPOSED DENEAL ROAD SECTION**

STA. 24+20 TO STA. 27+60  
ABOVE EXIST PAVEMENT TO REMAIN

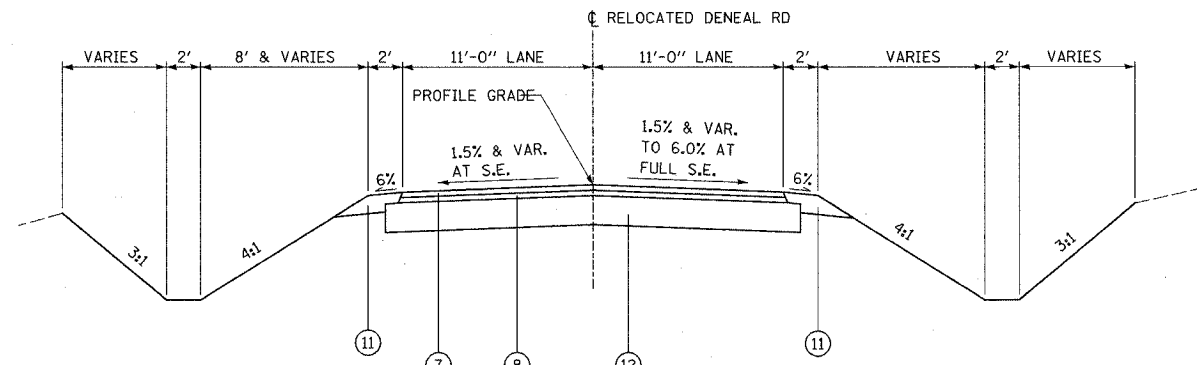


**PROPOSED IL RTE 34 SECTION**  
SHOULDER REMOVAL & REPLACEMENT  
LOOKING EAST

• SHOULDER WIDTHS VARY @ TRAFFIC BARRIER TERMINAL TYPE 1 SPECIAL. SEE DETAIL SH. 74

LEFT SHOULDER:  
STA. 439+00 TO 441+16  
STA. 441+64 TO 444+59

RIGHT SHOULDER:  
STA. 438+00 TO 441+16  
STA. 441+64 TO 443+39.50



**PROPOSED DENEAL ROAD SECTION**

STA. 20+20 TO STA. 24+20  
OUTSIDE EXISTING PAVEMENT