

STATE OF ILLINOIS
DEPARTMENT OF TRANSPORTATION

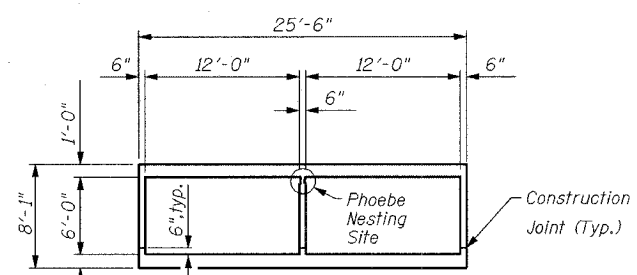
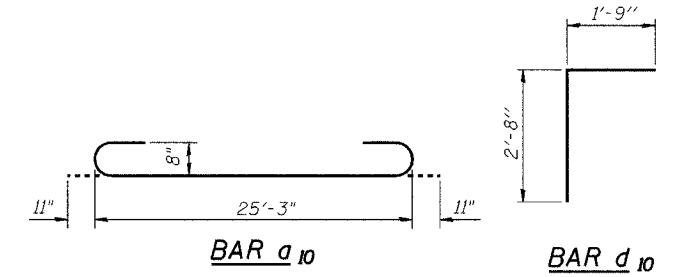
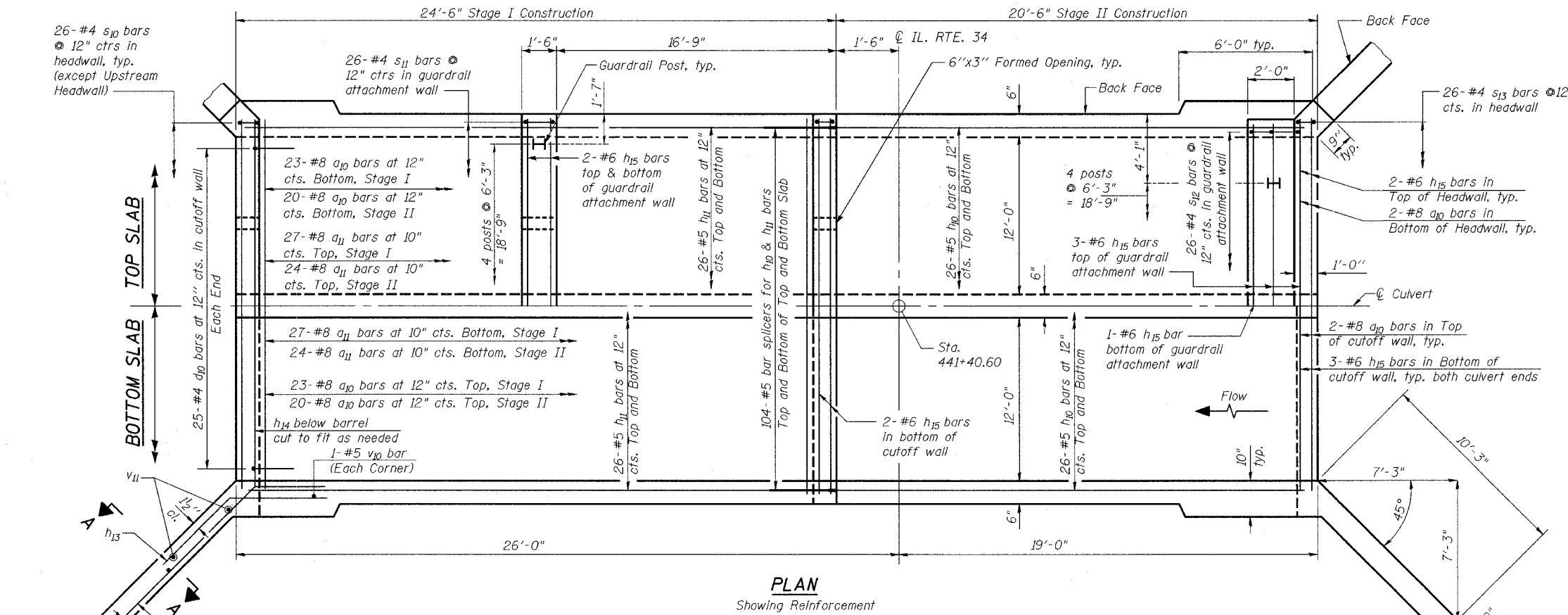
ROUTE NO.	SECTION	COUNTY	SHEET NO.	SHEET NO.
F.A.P. 778	(2B-1)-1	SALINE	74	47
FED. ROAD DIST. NO. 9		ILLINOIS	FED. AID PROJECT	

8 SHEETS

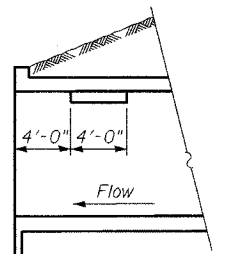
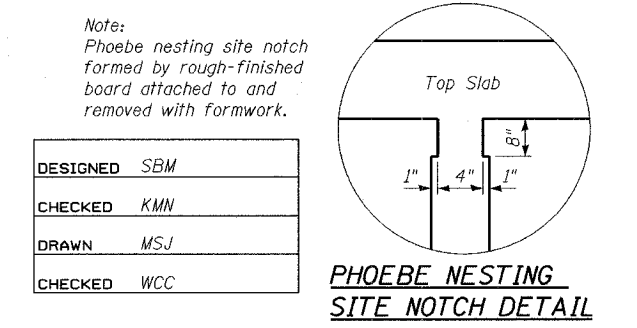
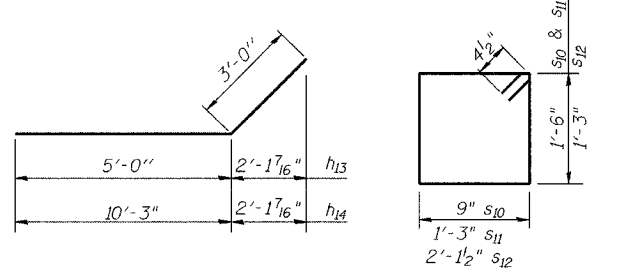
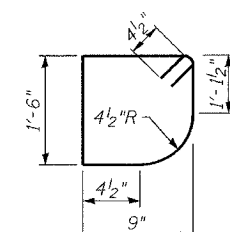
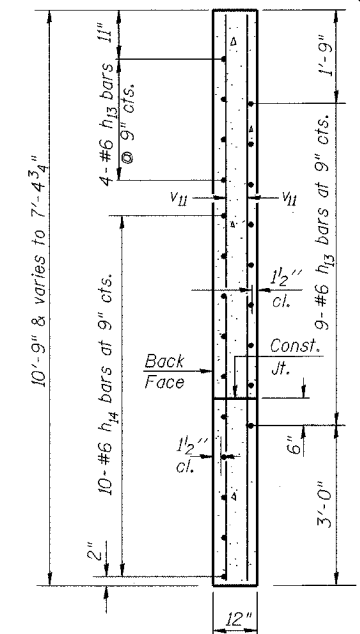
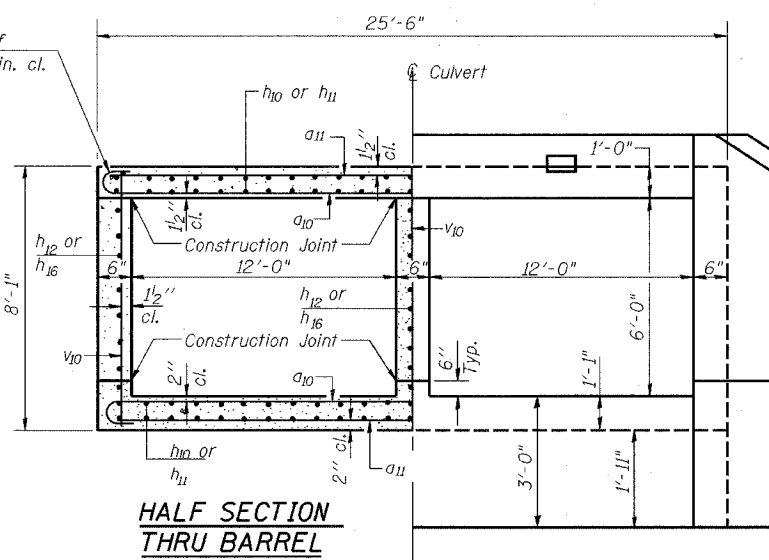
Note:
A distance of half the length of the wingwall but not less than six (6) feet of the barrel shall be poured monolithically with the wingwalls.
See sheet 6 for details of headwall & guardrail attachment wall reinforcement.

BILL OF MATERIAL

Bar	No.	Size	Length	Shape
a ₁₀	98	#8	27'-1"	U
a ₁₁	102	#8	24'-6"	—
d ₁₀	50	#4	4'-5"	L
h ₁₀	104	#5	20'-3"	—
h ₁₁	104	#5	24'-3"	—
h ₁₂	18	#5	20'-3"	—
h ₁₃	52	#6	8'-0"	—
h ₁₄	40	#6	13'-3"	—
h ₁₅	22	#6	25'-3"	—
h ₁₆	18	#5	24'-3"	—
v ₁₀	184	#4	7'-9"	—
v ₁₁	16	#4	10'-5"	—
s ₁₀	52	#4	5'-3"	□
s ₁₁	26	#4	6'-3"	□
s ₁₂	26	#4	7'-6"	□
s ₁₃	26	#4	5'-1"	□
Concrete Box Culverts			Cu. Yd.	127.0
Reinforcement Bars			Pound	23400



Tilt hook of a bars if necessary for 1/2" min. cl.



BOX CULVERT SECTIONS & DETAILS
IL. ROUTE 34 OVER UNNAMED TRIBUTARY
TO SOUTH FORK SALINE RIVER
FAP ROUTE 778 - SEC. (2B-1)-1
SALINE COUNTY
STATION 441+40.60
STRUCTURE NO. 083-2016

DESIGNED	SBM
CHECKED	KMN
DRAWN	MSJ
CHECKED	WCC