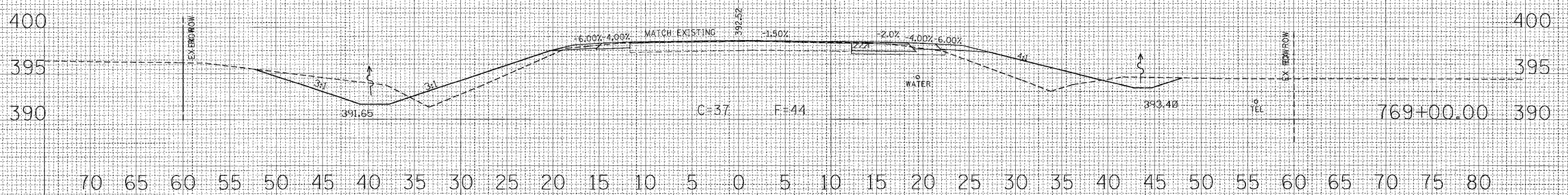
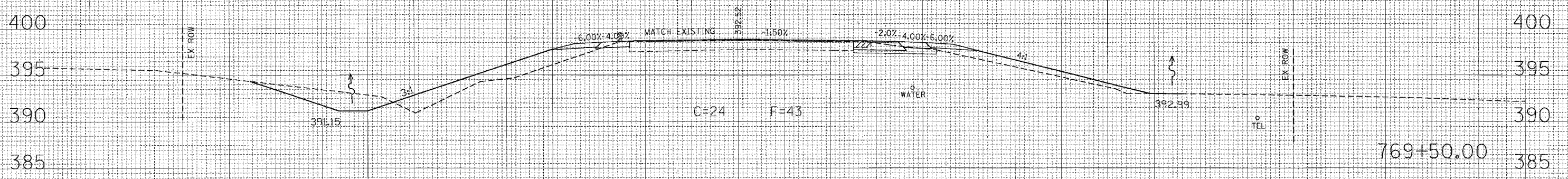
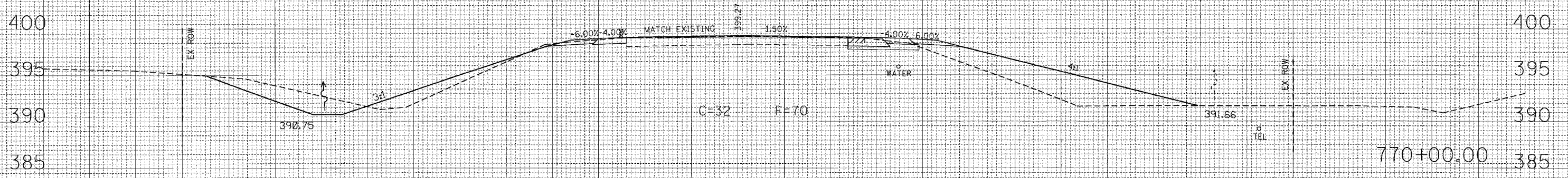


F.A.P. RTE.	SECTION	COUNTY	TOTAL SHEETS	SHEET NO.
322	4-1	JACKSON	26	24
STA. 770+00.00		TO STA. 769+00.00		
FED. ROAD DIST. NO.		ILLINOIS FED. AID PROJECT		
CONTRACT NO. 98807				

70 65 60 55 50 45 40 35 30 25 20 15 10 5 0 5 10 15 20 25 30 35 40 45 50 55 60 65 70 75 80

C
FAP 322
(US 51)



FINAL SURVEY PLOTTED
NOTE BOOK TEMPLATE
AREAS CHECKED

ORIGINAL SURVEY PLOTTED
NOTE BOOK TEMPLATE
AREAS CHECKED