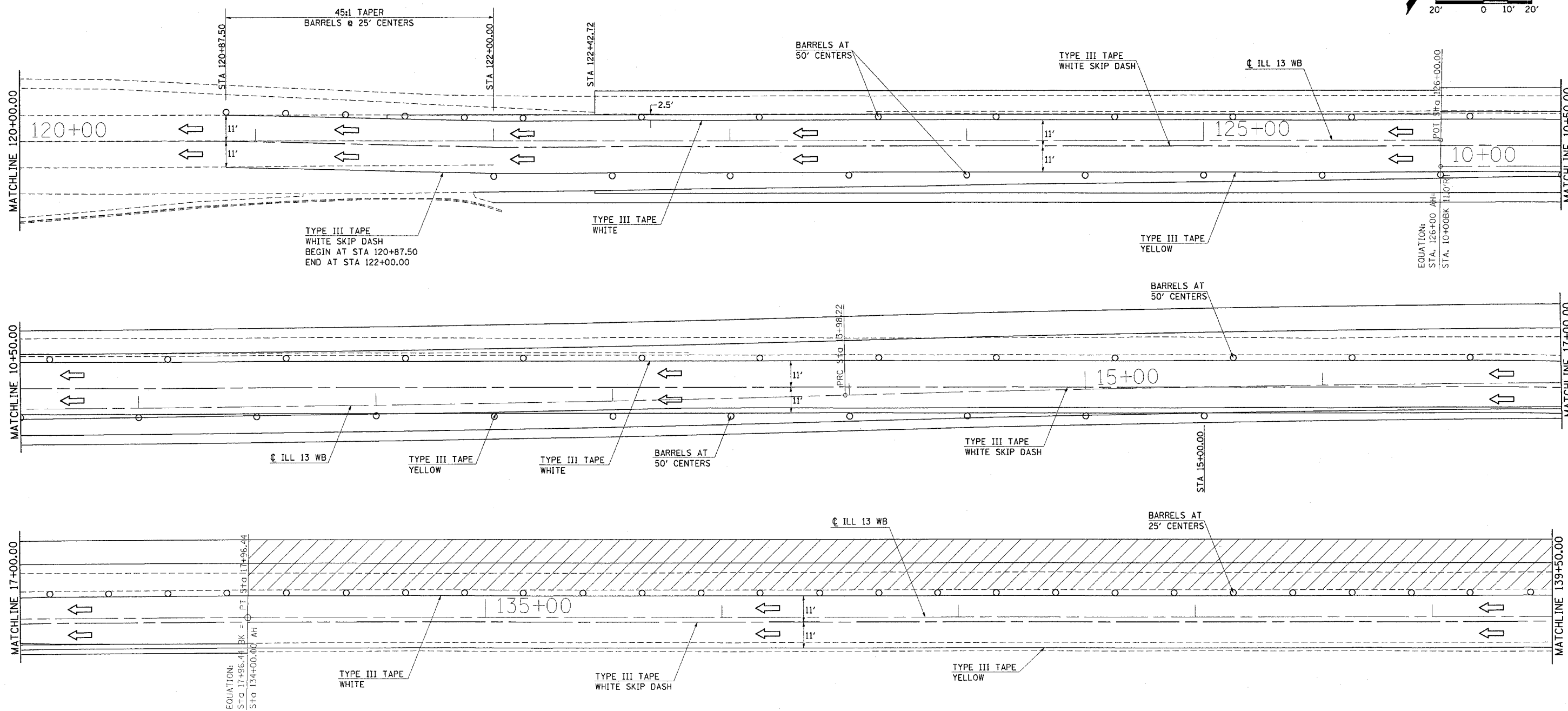
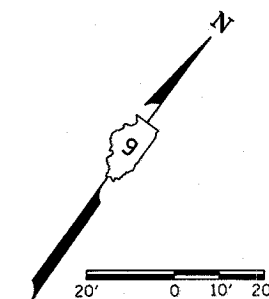


F.A.R. RTE	SECTION	COUNTY	TOTAL SHEETS	SHEET NO
331	5-(2,3)-1,15-2	JACKSON	94	31
STA.		TO STA.		
FED. ROAD DIST. NO.	ILLINOIS	FED. AID PROJECT		

STAGE 4

1. SHIFT WB TRAFFIC TO MEDIAN SHOULDER AS SHOWN. VERTICAL BARRICADES MAY BE USED IN LIEU OF BARRELS IN TANGENT SECTIONS.
2. CONSTRUCT P.C.C. PAVEMENT FROM STA 134+00.00 TO STA 142+16.03 LT.
3. CONSTRUCT BITUMINOUS SHOULDERS FROM STA 122+42.72 TO STA 142+16.03 LT.
THE CONTRACTOR HAS THE OPTION TO COMPLETE THIS WORK DURING STAGE 5 SHOULDER OPERATIONS.



The File # 154545 2004
 c:\projects\980493\980493.dwg
 DMS: D904933:980493.dwg
 PLOT: D904933:980493.dwg
 LVS: 27
 LVS: 27
 LVS: 27

EQUATION:
 STA 17+96.44 BK = PI STA 17+96.44
 STA 134+00.00 AH