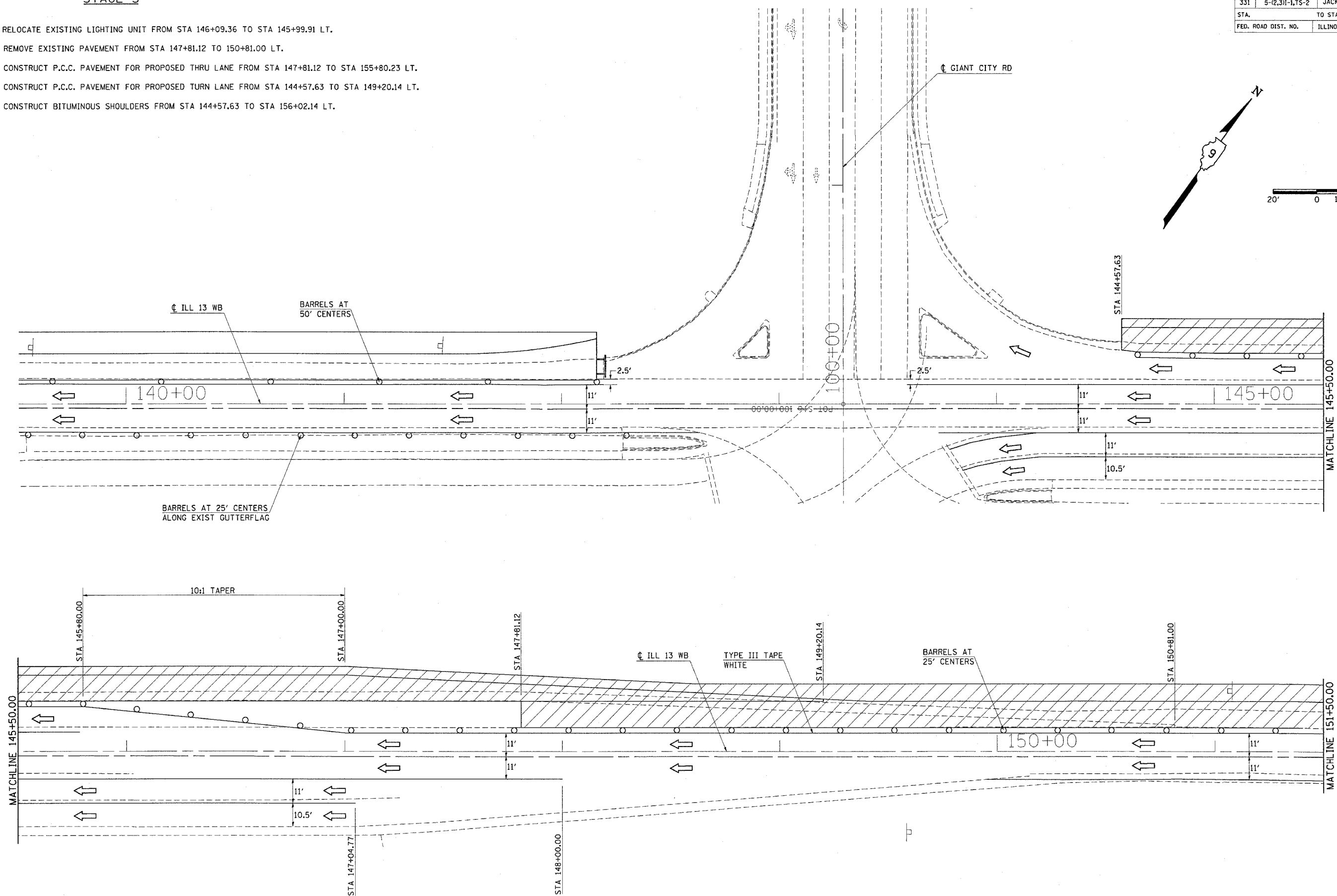


F.A.P. RTE	SECTION	COUNTY	TOTAL SHEETS	SHEET NO
331	5-(2,3)I-1,7S-2	JACKSON	94	34
STA.		TO STA.		
FED. ROAD DIST. NO.	ILLINOIS	FED. AID PROJECT		

STAGE 5

1. RELOCATE EXISTING LIGHTING UNIT FROM STA 146+09.36 TO STA 145+99.91 LT.
2. REMOVE EXISTING PAVEMENT FROM STA 147+81.12 TO 150+81.00 LT.
3. CONSTRUCT P.C.C. PAVEMENT FOR PROPOSED THRU LANE FROM STA 147+81.12 TO STA 155+80.23 LT.
4. CONSTRUCT P.C.C. PAVEMENT FOR PROPOSED TURN LANE FROM STA 144+57.63 TO STA 149+20.14 LT.
5. CONSTRUCT BITUMINOUS SHOULDERS FROM STA 144+57.63 TO STA 156+02.14 LT.



Thu, Feb 19, 15:54:32, 2004
 c:\projects\5804903\shogling.dgn LV:2-63
 DMS:\D904903\904903\main32\STAGE5 LV:2-7,25:21,28
 PWS:\D904903\904903\main32\STAGE5 LV:2-7,25:21,28