

F.A.P. RTE	SECTION	COUNTY	TOTAL SHEETS	SHEET NO
331	5-(2,3) I-1, TS-2	JACKSON	94	36
STA.		TO STA.		
FED. ROAD DIST. NO.	ILLINOIS	FED. AID PROJECT		

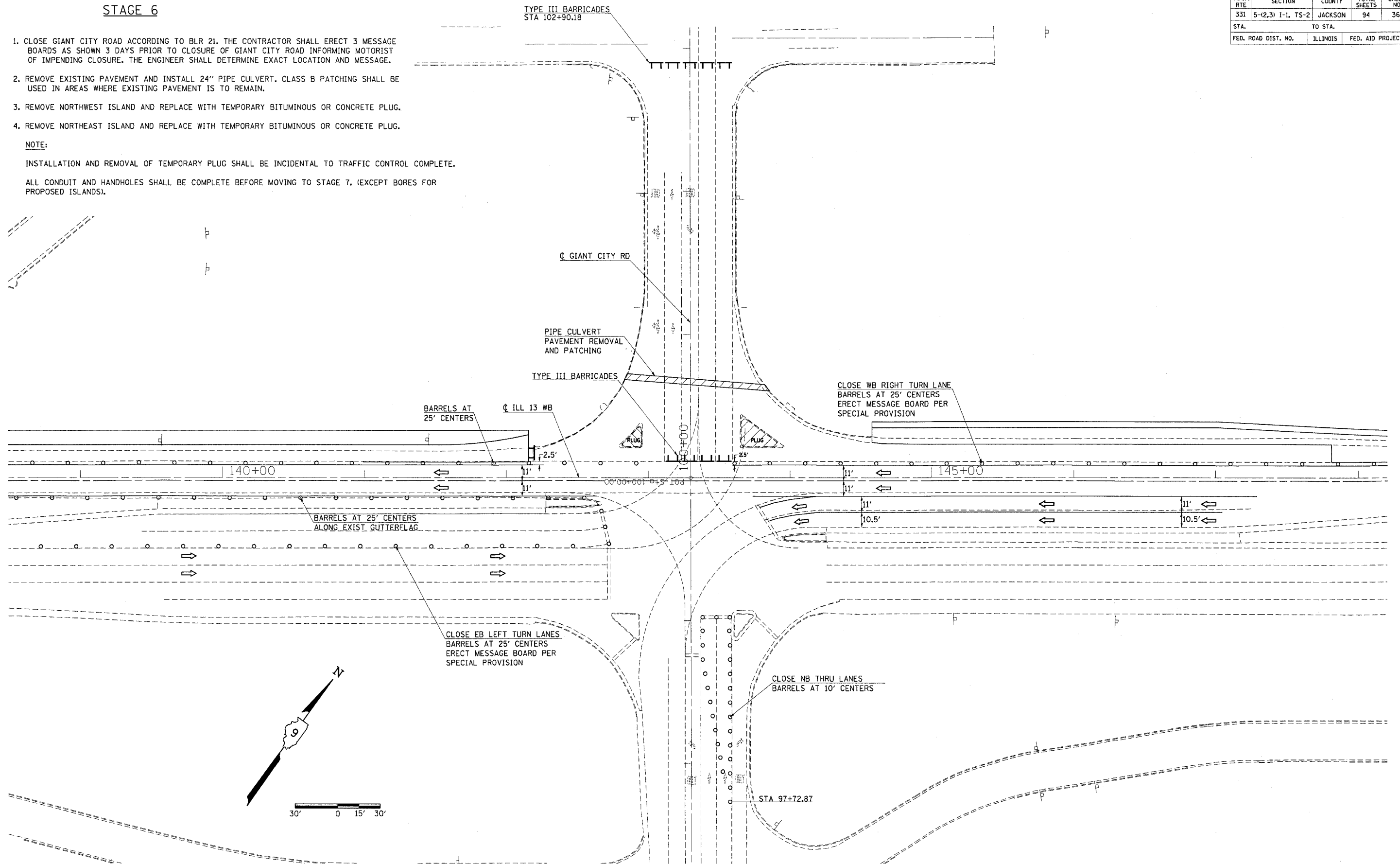
**STAGE 6**

1. CLOSE GIANT CITY ROAD ACCORDING TO BLR 21. THE CONTRACTOR SHALL ERECT 3 MESSAGE BOARDS AS SHOWN 3 DAYS PRIOR TO CLOSURE OF GIANT CITY ROAD INFORMING MOTORIST OF IMPENDING CLOSURE. THE ENGINEER SHALL DETERMINE EXACT LOCATION AND MESSAGE.
2. REMOVE EXISTING PAVEMENT AND INSTALL 24" PIPE CULVERT. CLASS B PATCHING SHALL BE USED IN AREAS WHERE EXISTING PAVEMENT IS TO REMAIN.
3. REMOVE NORTHWEST ISLAND AND REPLACE WITH TEMPORARY BITUMINOUS OR CONCRETE PLUG.
4. REMOVE NORTHEAST ISLAND AND REPLACE WITH TEMPORARY BITUMINOUS OR CONCRETE PLUG.

**NOTE:**

INSTALLATION AND REMOVAL OF TEMPORARY PLUG SHALL BE INCIDENTAL TO TRAFFIC CONTROL COMPLETE.

ALL CONDUIT AND HANDHOLES SHALL BE COMPLETE BEFORE MOVING TO STAGE 7. (EXCEPT BORES FOR PROPOSED ISLANDS).



Mon Feb 23 08:40 2004  
 c:\projects\980493\etg\stage6.dwg  
 DWG: 980493\stage6.dwg LVS: 12/28