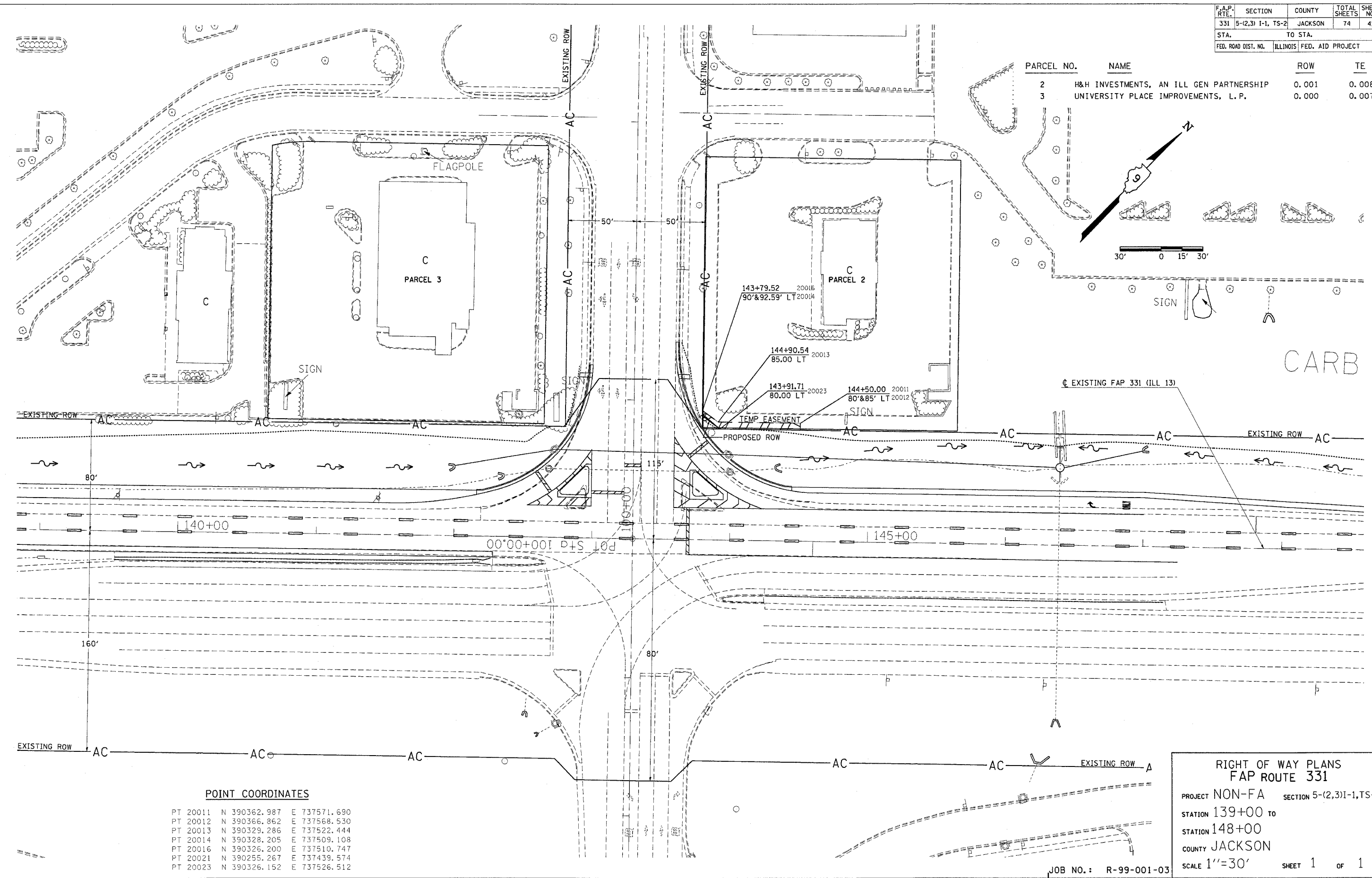


REVISED BY \_\_\_\_\_ DATE \_\_\_\_\_

DRAWN BY \_\_\_\_\_ DATE \_\_\_\_\_

F.A.P. RTE.	SECTION	COUNTY	TOTAL SHEETS	SHEET NO.
331	5-(2,3) I-1, TS-2	JACKSON	74	41
STA.		TO STA.		
FED. ROAD DIST. NO.	ILLINOIS FED. AID PROJECT			

PARCEL NO.	NAME	ROW	TE
2	H&H INVESTMENTS, AN ILL GEN PARTNERSHIP	0.001	0.008
3	UNIVERSITY PLACE IMPROVEMENTS, L.P.	0.000	0.007



**POINT COORDINATES**

PT 20011	N	390362.987	E	737571.690
PT 20012	N	390366.862	E	737568.530
PT 20013	N	390329.286	E	737522.444
PT 20014	N	390328.205	E	737509.108
PT 20016	N	390326.200	E	737510.747
PT 20021	N	390255.267	E	737439.574
PT 20023	N	390326.152	E	737526.512

**RIGHT OF WAY PLANS**  
**FAP ROUTE 331**

PROJECT NON-FA SECTION 5-(2,3)I-1,TS-2  
 STATION 139+00 TO  
 STATION 148+00  
 COUNTY JACKSON  
 SCALE 1"=30' SHEET 1 OF 1

JOB NO.: R-99-001-03

The Mer. Id. 092850 2004  
 Date 09/03/03 14:00:00  
 DMS: D904903.L400A000J10Nerow.mxd LV=178-17-6-3  
 DMS: D904903.L400A000J10Nerow.mxd LV=178-17-6-3  
 DMS: D904903.L400A000J10Nerow.mxd LV=178-17-6-3