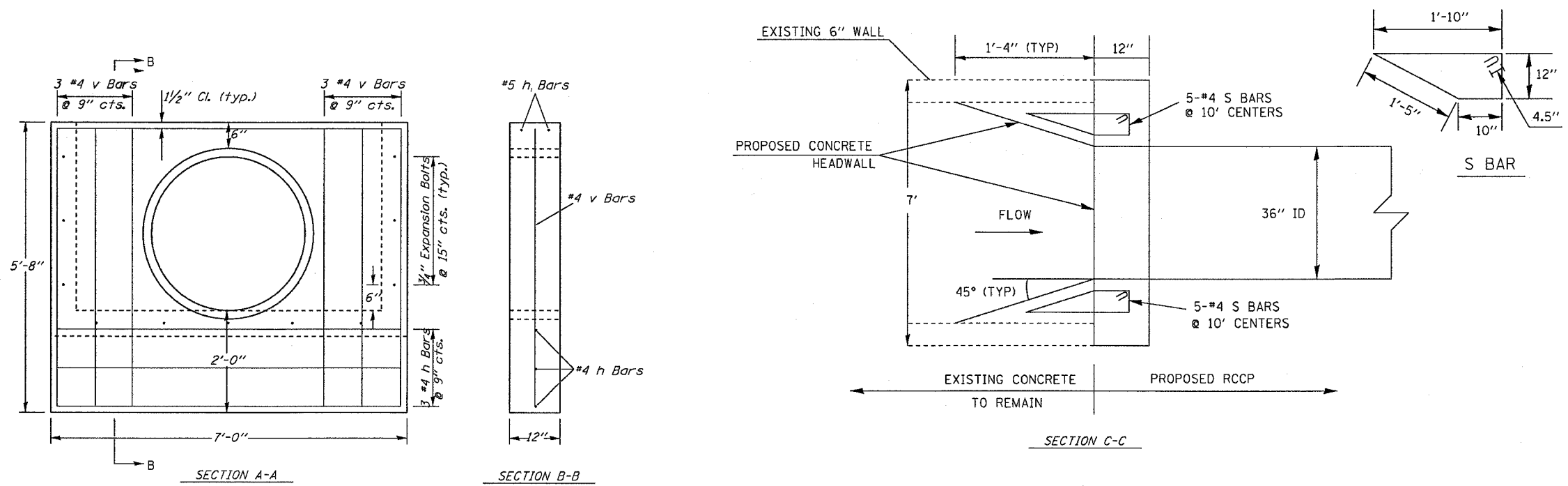
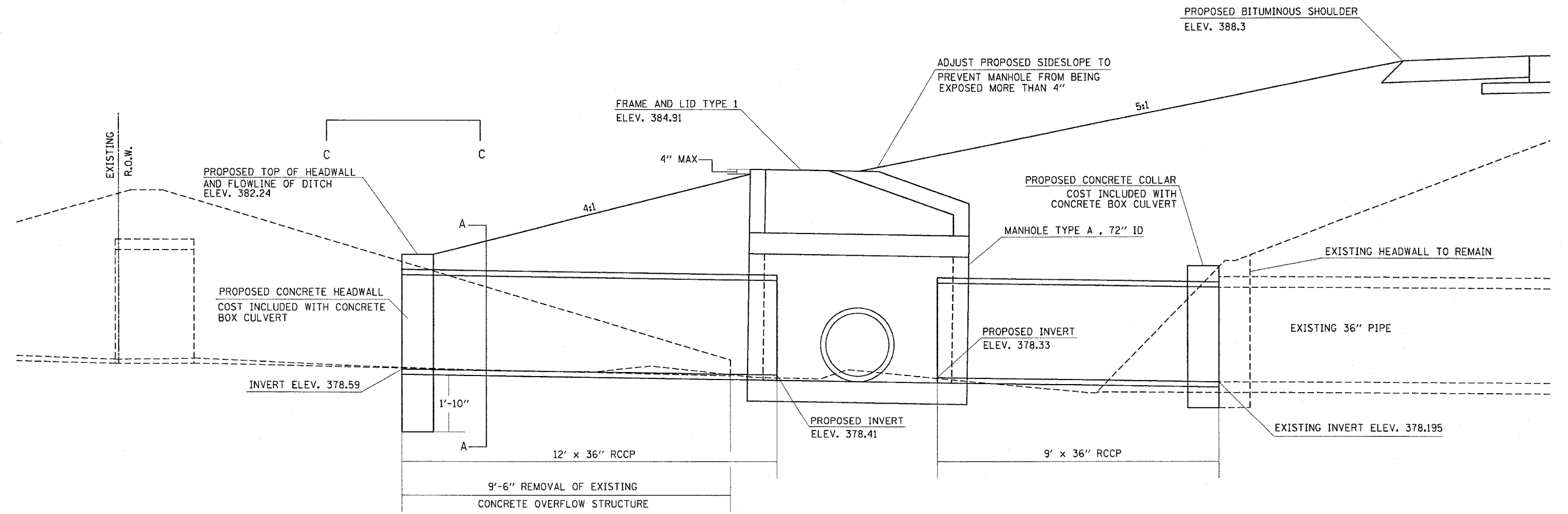


F.A.P. RTE.	SECTION	COUNTY	TOTAL SHEETS	SHEET NO.
331	5-(2,3)	I-1, TS-2	94	59
STA.	TO STA.			
FED. ROAD DIST. NO.	ILLINOIS	FED. AID PROJECT		



**BILL OF MATERIAL**  
(HEADWALL AND COLLAR)

BAR	NO.	SIZE	LENGTH	SHAPE
h	3	#4	6'-9"	—
h <sub>1</sub>	2	#5	6'-9"	—
v	6	#4	5'-5"	—
s	10	#4	5'-10"	∇
REINFORCEMENT BARS			Pound	90
EXPANSION BOLTS 3/4"			Each	19
CONC. BOX CULVERTS			Cu Yd	1.8
CONCRETE REMOVAL			Cu Yd	2.2



Mon Feb 23 14:46:05 2004  
 C:\p2\projects\331\331\331.dwg  
 LV-2-54-56-63