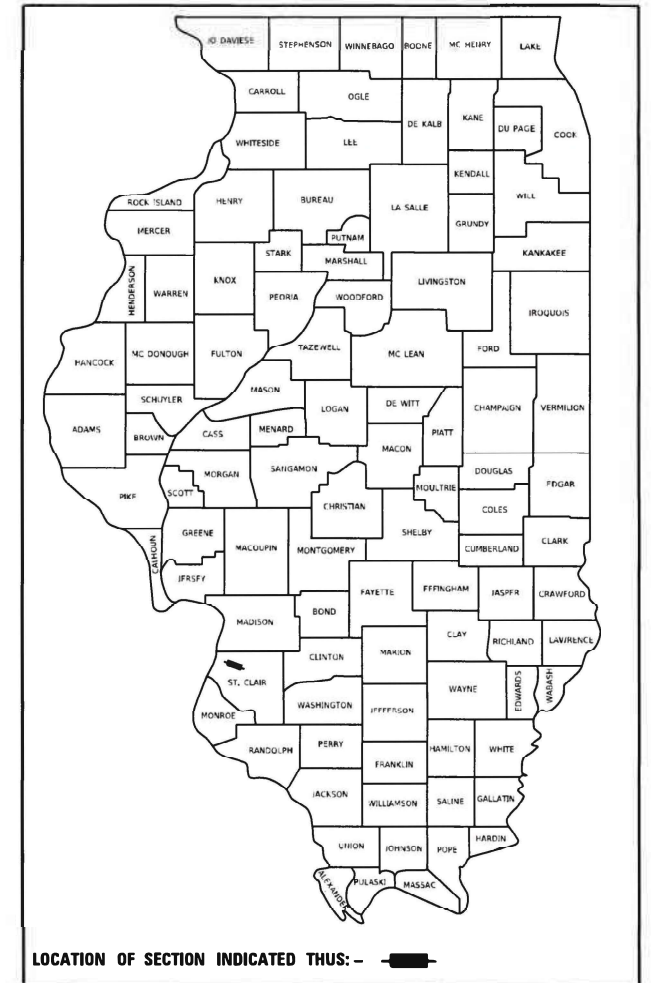


STATE OF ILLINOIS
DEPARTMENT OF TRANSPORTATION

F.A.U. RTE.	SECTION	COUNTY	TOTAL SHEETS	SHEET NO.
9166	33-2BR-2	ST. CLAIR	33	1
		ILLINOIS	CONTRACT NO. 76N39	

D-98-066-20



FOR INDEX OF SHEETS, SEE SHEET NO. 2

LOCATION	TRAFFIC DATA
2018 ADT	ST. CLAIR AVE. 12000 (ACTUAL)
2041 ADT	13500 (ESTIMATED)
MU%	1.2
SU%	3.1

PROPOSED HIGHWAY PLANS

FAU ROUTE 9166 (ST. CLAIR AVENUE)
SECTION 33-2BR-2
PROJECT STP-99H6(648)
BRIDGE REPAIR AND HMA OVERLAY
ST. CLAIR COUNTY

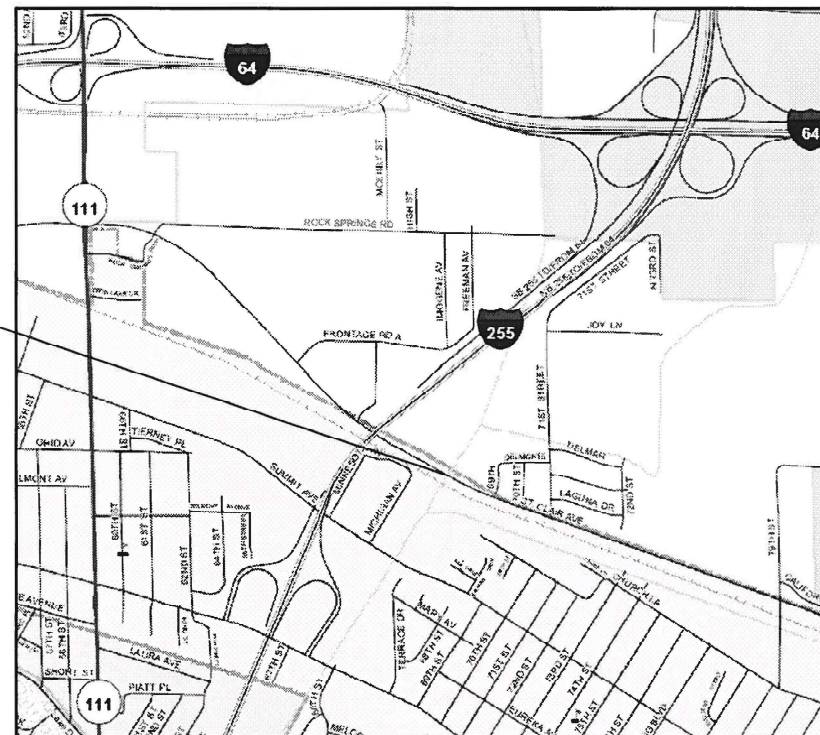
C-98-080-20

R 9 W

ST. CLAIR AVE OVER
HARDING DITCH
LAT: 38.607808°N
LONG: 90.078192°W

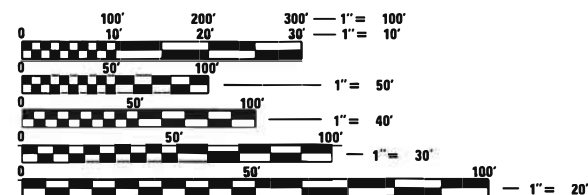
SN 082-0033
Sta. 86+18.00

SN 082-0034
Sta. 86+15.00



LOCATION MAP
(NOT TO SCALE)

GROSS LENGTH = 526.17 FT. = 0.1 MILE
NET LENGTH = 526.17 FT. = 0.1 MILE



FULL SIZE PLANS HAVE BEEN PREPARED USING STANDARD ENGINEERING SCALES. REDUCED SIZED PLANS WILL NOT CONFORM TO STANDARD SCALES. IN MAKING MEASUREMENTS ON REDUCED PLANS, THE ABOVE SCALES MAY BE USED.

J.U.L.I.E.
JOINT UTILITY LOCATION INFORMATION FOR EXCAVATORS
1-800-892-0123
OR 811

PROJECT ENGINEER: HERVE GELIN (618)-346-3179
PROJECT DESIGNER: THOMAS JEFFERSON (618)-346-3412

CONTRACT NO. 76N39

STATE OF ILLINOIS
DEPARTMENT OF TRANSPORTATION

SUBMITTED Jan 22 20 21
K Roberts REGIONAL ENGINEER

March 19, 2021
S. E. A. Etk ENGINEER OF DESIGN AND ENVIRONMENT

March 19, 2021
James J. ... DIRECTOR OF HIGHWAYS PROJECT IMPLEMENTATION

PRINTED BY THE AUTHORITY
OF THE STATE OF ILLINOIS

INDEX OF SHEETS

1 COVER SHEET
 2 INDEX OF SHEETS, HIGHWAY STANDARDS, GENERAL NOTES, COMMITMENTS, MIXTURE REQUIREMENTS
 3-5 SUMMARY OF QUANTITIES
 6-9 TYPICAL SECTIONS
 10-11 SCHEDULE OF QUANTITIES
 12-13 WIDENING PLANS
 14-18 BRIDGE PLANS, SN 082-0033
 19-33 BRIDGE PLANS, SN 082-0034

HIGHWAY STANDARDS

000001-08 STANDARD SYMBOLS, ABBREVIATIONS AND PATTERNS
 001001-02 AREAS OF REINFORCEMENT BARS
 001006 DECIMAL OF AN INCH AND OF A FOOT
 701423-10 LANE CLOSURE, MULTILANE, WITH BARRIER, FOR SPEEDS ≥ 45 MPH TO 55 MPH
 701901-08 TRAFFIC CONTROL DEVICES
 704001-08 TEMPORARY CONCRETE BARRIER
 780001-05 TYPICAL PAVEMENT MARKINGS
 781001-04 TYPICAL APPLICATIONS RAISED REFLECTIVE PAVEMENT MARKINGS
 701326-04 LANE CLOSURE, 2L, 2W, PAVEMENT WIDENING, FOR SPEEDS ≥ 45 MPH

GENERAL NOTES

- ① ILLINOIS STATE LAW REQUIRES A 48-HOUR NOTICE BE GIVEN TO ALL UTILITIES WITHIN THE PROJECT AREA BEFORE DIGGING. FIELD MARKING OF FACILITIES MAY BE OBTAINED BY CONTACTING J.U.L.I.E. OR FOR NON-MEMBERS, THE UTILITY COMPANY DIRECTLY. MEMBERS OF J.U.L.I.E. CALL TOLL FREE (800) 892-0123 OR 811 AND ARE INDICATED BY *. NON- J.U.L.I.E. MEMBERS MUST BE NOTIFIED INDIVIDUALLY.
- ② NO SURVEY WAS PERFORMED FOR THIS PROJECT. THE PLANS WERE CREATED USING MICROFILM AND FIELD MEASUREMENTS.
- ③ THE PROPOSED PAVEMENT MARKING SHALL MATCH THE LOCATIONS OF THE EXISTING PAVEMENT MARKING, AS DIRECTED BY THE ENGINEER.
- ④ TWO CHANGEABLE MESSAGE SIGNS SHALL BE PLACED 14 DAYS IN ADVANCE OF CONSTRUCTION. EXACT LOCATION OF CHANGEABLE MESSAGE SIGNS SHALL BE DETERMINED BY THE ENGINEER.
- ⑥ THE DEPARTMENT STRONGLY ENCOURAGES THE PRIME CONTRACTOR AND THEIR APPROVED SUB-CONTRACTORS TO HIRE MINORITY, WOMEN AND DISADVANTAGED INDIVIDUALS FROM ITS FEDERALLY FUNDED HIGHWAY CONSTRUCTION CAREERS TRAINING PROGRAM (HCCTP) TO HELP MEET WORKFORCE AND TRAINEE GOALS. THIS PROGRAM IS TRAINING MINORITIES, WOMEN AND DISADVANTAGED INDIVIDUALS IN HIGHWAY CONSTRUCTION-RELATED SKILLS, E.G., MATH FOR THE TRADES, JOB READINESS, TECHNICAL SKILLS IN COURSEWORK (CARPENTRY, CONCRETE FLATWORK, BLUEPRINT READING, SITE PLANS, SITE WORK, TOOLS USE, ETC.) AND OSHA 10 HOUR CERTIFICATION, TO PREPARE THEM FOR A CAREER IN THE HIGHWAY CONSTRUCTION TRADES. GRADUATES ARE WELL-TRAINED AND READY TO BECOME PRODUCTIVE ENTRY-LEVEL CONSTRUCTION WORKERS. CONTACT THE DISTRICT 8 EEO OFFICE AT 618-346-3360 AND/OR THE HCCTP COORDINATOR AT 618-874-6528 TO LEARN MORE ABOUT THE PROGRAM AND FOR ASSISTANCE IN METTING WORKFORCE AND TRAINEE GOALS.

COMMITMENTS

NONE

MIXTURE REQUIREMENTS

ROUTE	FAU 9166
SECTION	32-2BR-2
COUNTY	St. Clair
CONTRACT	76N39

DESCRIPTION:	Bridge Joint Repair and HMA Overlay w/ Bridge Repairs on St. Clair Ave over Harding Ditch - SN 082-0033, 0034
---------------------	--

ADT (Construction Yr)	12000
MU%:	1
SU%:	3
20 YR. ESAL'S:	1.29

MIXTURE USE	POLY SURFACE	BINDER			
AC/PG	SBS PG 76-22	PG 64-22			
RAP % (MAX)	SEE SPECIAL	SEE SPECIAL			
DESIGN AIR VOIDS	4.0% @ Ndes=70	4.0% @ Ndes=70			
MIX COMPOSITION (Gradation)	IL 9.5	IL 19.0			
FRICTION AGG	MIXTURE "D"	MIXTURE "B"			
QUALITY MGMT PROGRAM	QC/QA	QC/QA			

MODEL: \$MODELNAME
 FILE NAME: pw\pblmcom.dwg
 PROJECT: I:\DOT\Documents\DOT_Offices\District 8\Project\UDF\9166\CADData\CADsheets\UDF\9166-32-2BR-2-12-21-21.dgn

REV. - MS

USER NAME = jeffersonts DESIGNED - _____ DRAWN - _____ CHECKED - _____ DATE - _____ PLOT SCALE = 100.0676' / in. PLOT DATE = 1/27/2021	REVISED - _____ REVISED - _____ REVISED - _____ REVISED - _____	STATE OF ILLINOIS DEPARTMENT OF TRANSPORTATION	INDEX OF SHEETS, HIGHWAY STANDARDS, GENERAL NOTES COMMITMENTS, MIXTURE REQUIREMENTS	F.A.U. RTE. 9166 SECTION 33-2BR-2 COUNTY ST. CLAIR TOTAL SHEETS 33 SHEET NO. 2 CONTRACT NO. 76N39	SCALE: _____ SHEET _____ OF _____ SHEETS STA. _____ TO STA. _____ ILLINOIS FED. AID PROJECT
--	--	---	--	--	--

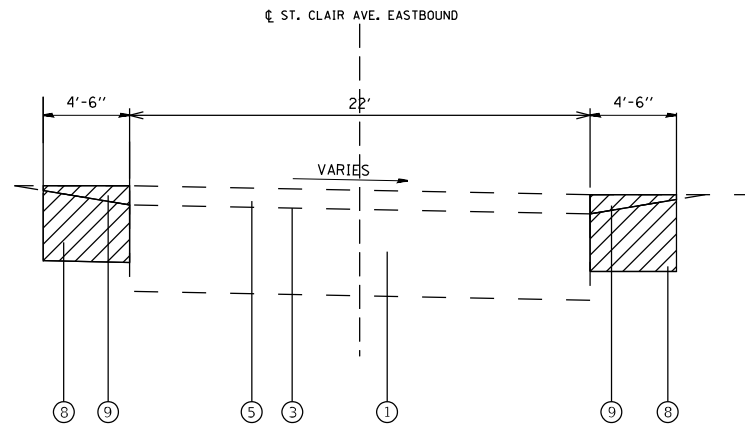
MODEL: \\MODEL\MAME\...
 FILE NAME: ...

CODE NO.	ITEM	UNIT	TOTAL QUANTITY	CONSTRUCTION CODE	
				BRIDGE 0047	BRIDGE 0059
				082-0033	082-0034
				80% FED	
				20% STATE	
				URBAN	
70100500	TRAFFIC CONTROL AND PROTECTION, STANDARD 701326	L SUM	1	0.5	0.5
70107025	CHANGEABLE MESSAGE SIGN	CAL DA	116	58	58
70300220	TEMPORARY PAVEMENT MARKING - LINE 4"	FOOT	8519	4052	4467
70400100	TEMPORARY CONCRETE BARRIER	FOOT	525	250	275
70400200	RELOCATE TEMPORARY CONCRETE BARRIER	FOOT	475	250	225
70600250	IMPACT ATTENUATORS, TEMPORARY (NON- REDIRECTIVE), TEST LEVEL 3	EACH	2	1	1
70600350	IMPACT ATTENUATORS, RELOCATE (NON- REDIRECTIVE), TEST LEVEL 3	EACH	2	1	1
* 78001110	PAINT PAVEMENT MARKING - LINE 4"	FOOT	8948	4256	4692
* 78100100	RAISED REFLECTIVE PAVEMENT MARKER	EACH	45	23	22
* 78200010	BARRIER WALL REFLECTORS, TYPE B	EACH	21	10	11
78300200	RAISED REFLECTIVE PAVEMENT MARKER REMOVAL	EACH	49	23	26
X5870015	BRIDGE DECK CONCRETE SEALER	SQ FT	547	176	371
X7030005	TEMPORARY PAVEMENT MARKING REMOVAL	SQ FT	2843	1354	1489
Z0001903	STRUCTURAL STEEL REMOVAL	POUND	3030		3030

* SPECIALTY ITEM

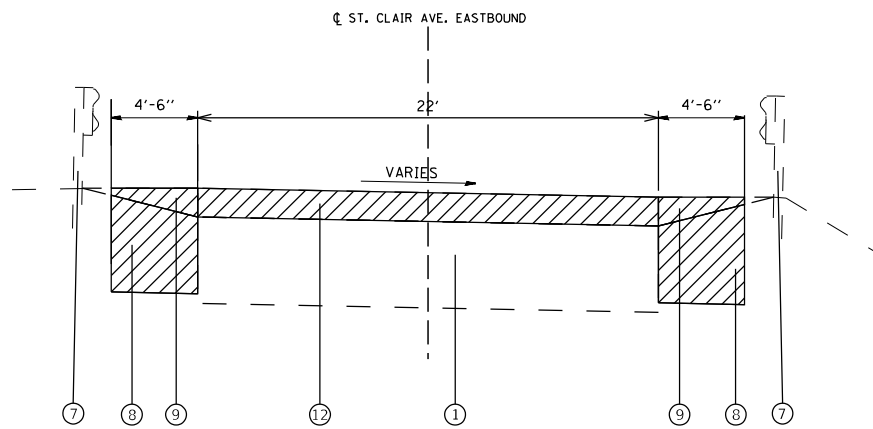
REV. - MS

USER NAME = jeffersonts	DESIGNED - _____	REVISED - _____	STATE OF ILLINOIS DEPARTMENT OF TRANSPORTATION	SUMMARY OF QUANTITIES		F.A.U. RTE.	SECTION	COUNTY	TOTAL SHEETS	SHEET NO.
PLOT SCALE = 100.0597' / in.	DRAWN - _____	REVISED - _____				9166	33-2BR-2	ST. CLAIR	33	4
PLOT DATE = 1/27/2021	CHECKED - _____	REVISED - _____		SCALE: _____ SHEET ___ OF ___ SHEETS STA. _____ TO STA. _____		CONTRACT NO. 76N39				
	DATE - _____	REVISED - _____		ILLINOIS FED. AID PROJECT						



EXISTING ROADWAY TYPICAL

STA. 88+55.92 TO STA. 86+47.47
 STA. 85+88.58 TO STA. 83+80.08



EXISTING ROADWAY TYPICAL

STA. 86+47.42 TO STA. 86+43.42
 STA. 85+92.58 TO STA. 85+88.58

LEGEND

- ① EXISTING PAVEMENT
- ② EXISTING BASE COURSE WIDENING - 8"
- ③ EXISTING BITUMINOUS MATERIALS (TACK COAT)
- ④ EXISTING HMA OVERLAY - 2"
- ⑤ EXISTING HMA OVERLAY - 3"
- ⑥ EXISTING BRIDGE APPROACH SHOULDERS
- ⑦ EXISTING GUARDRAIL
- ⑧ PROPOSED EARTH EXCAVATION WIDENING
- ⑨ PROPOSED AGGREGATE SHOULDER REMOVAL
- ⑩ PROPOSED BASE COURSE WIDENING
- ⑪ PROPOSED BITUMINOUS MATERIAL (TACK COAT)
- ⑫ PROPOSED HMA REMOVAL - 5"
- ⑬ PROPOSED HMA OVERLAY - 2"
- ⑭ PROPOSED HMA OVERLAY - 5"

REMOVAL

MODEL: \\MODEL\NAMES
 FILE: \\NAME: P:\pub\120201\mtdat\llr\ds\app\PIV\DOT\Documents\DOT_Offices\Dat\ctt_B\Projects\0776\33\CADD\Drawings\CADD\Drawings\0776\33\33-21-11-11-11.dgn

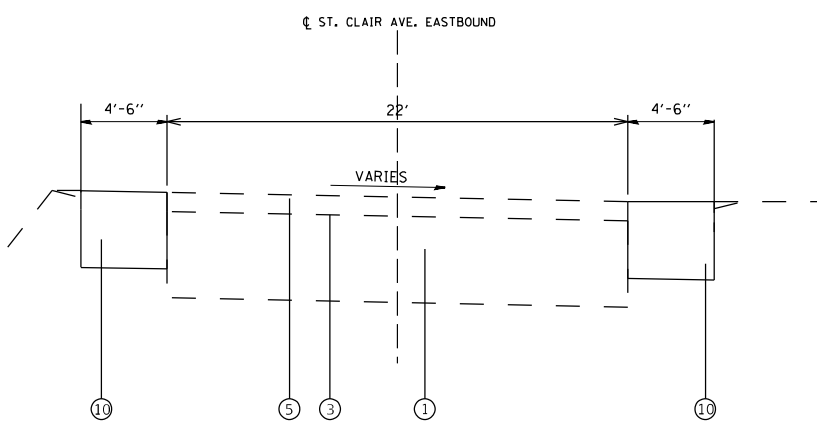
USER NAME = jeffersons	DESIGNED - _____	REVISED - _____
PLOT SCALE = 99.9913 * / in.	DRAWN - _____	REVISED - _____
PLOT DATE = 1/27/2021	CHECKED - _____	REVISED - _____
	DATE - _____	REVISED - _____

**STATE OF ILLINOIS
 DEPARTMENT OF TRANSPORTATION**

TYPICAL SECTIONS

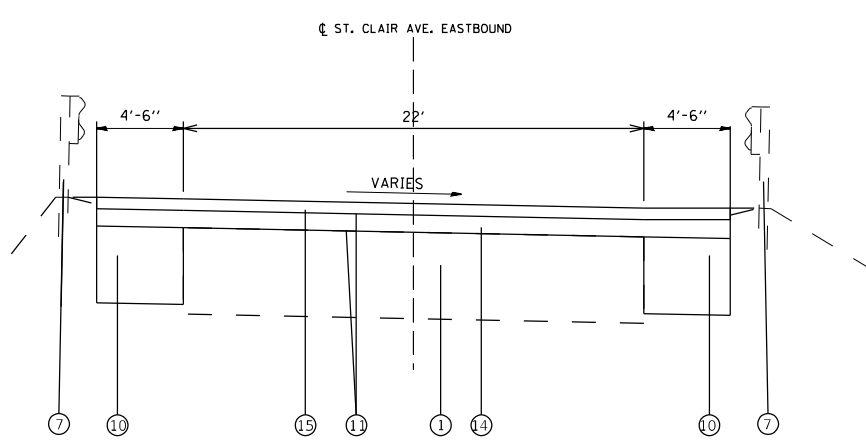
SCALE: _____ SHEET ____ OF ____ SHEETS STA. _____ TO STA. _____

F.A.U. RTE.	SECTION	COUNTY	TOTAL SHEETS	SHEET NO.
9166	33-2BR-2	ST. CLAIR	33	6
CONTRACT NO. 76N39				
ILLINOIS FED. AID PROJECT				



PROPOSED ROADWAY TYPICAL

STA. 88+55.92 TO STA. 86+47.47
 STA. 85+88.58 TO STA. 83+80.08



PROPOSED ROADWAY TYPICAL

STA. 86+47.42 TO STA. 86+43.42
 STA. 85+92.58 TO STA. 85+88.58

LEGEND

- ① EXISTING PAVEMENT
- ② EXISTING BASE COURSE WIDENING - 8"
- ③ EXISTING BITUMINOUS MATERIALS (TACK COAT)
- ④ EXISTING HMA OVERLAY - 2"
- ⑤ EXISTING HMA OVERLAY - 3"
- ⑥ EXISTING BRIDGE APPROACH SHOULDERS
- ⑦ EXISTING GUARDRAIL
- ⑧ PROPOSED EARTH EXCAVATION WIDENING
- ⑨ PROPOSED AGGREGATE SHOULDER REMOVAL
- ⑩ PROPOSED BASE COURSE WIDENING - 8"
- ⑪ PROPOSED BITUMINOUS MATERIAL (TACK COAT)
- ⑫ PROPOSED HMA REMOVAL - 5"
- ⑬ PROPOSED HMA OVERLAY - 2"
- ⑭ PROPOSED HMA BINDER COURSE - 2"
- ⑮ PROPOSED HMA SURFACE COURSE - 3"

REMOVAL

MODEL: s:\MODEL\NAME FILE NAME: p:\p\Illinois\gov\PI\DOT\Documents\DOT_Offices\District_8\Projects\0876N39\CAD\Plan\CAD\Sheet\0876N39-11-1-1\typical.dgn

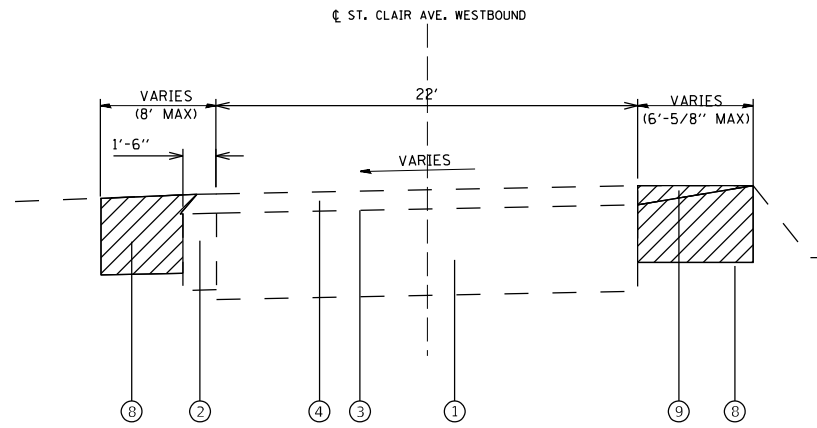
USER NAME = jeffersorts	DESIGNED - _____	REVISED - _____
	DRAWN - _____	REVISED - _____
PLOT SCALE = 100.0040' / in.	CHECKED - _____	REVISED - _____
PLOT DATE = 1/27/2021	DATE - _____	REVISED - _____

**STATE OF ILLINOIS
 DEPARTMENT OF TRANSPORTATION**

TYPICAL SECTIONS

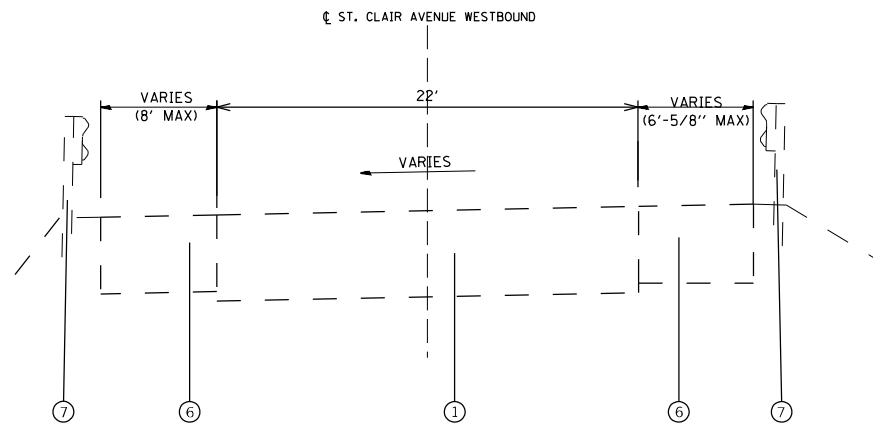
SCALE: _____ SHEET ____ OF ____ SHEETS STA. _____ TO STA. _____

F.A.U. RTE.	SECTION	COUNTY	TOTAL SHEETS	SHEET NO.
9166	33-2BR-2	ST. CLAIR	33	7
CONTRACT NO. 76N39				
ILLINOIS FED. AID PROJECT				



EXISTING ROADWAY TYPICAL

STA. 89+03.25 TO STA. 86+63.75 (LEFT)
 STA. 85+69.75 TO STA. 83+29.75 (LEFT)
 STA. 88+50.53 TO STA. 86+63.25 (RIGHT)
 STA. 85+69.75 TO STA. 83+82.47 (RIGHT)



EXISTING APPROACH TYPICAL

STA. 86+63.25 TO STA. 86+43.25
 STA. 85+89.75 TO STA. 85+69.75

LEGEND

- ① EXISTING PAVEMENT
- ② EXISTING BASE COURSE WIDENING - 8"
- ③ EXISTING BITUMINOUS MATERIALS (TACK COAT)
- ④ EXISTING HMA OVERLAY - 2"
- ⑤ EXISTING HMA OVERLAY - 3"
- ⑥ EXISTING BRIDGE APPROACH SHOULDERS
- ⑦ EXISTING GUARDRAIL
- ⑧ PROPOSED EARTH EXCAVATION WIDENING
- ⑨ PROPOSED AGGREGATE SHOULDER REMOVAL
- ⑩ PROPOSED BASE COURSE WIDENING - 8"
- ⑪ PROPOSED BITUMINOUS MATERIAL (TACK COAT)
- ⑫ PROPOSED HMA REMOVAL - 5"
- ⑬ PROPOSED HMA OVERLAY - 2"
- ⑭ PROPOSED HMA OVERLAY - 5"

REMOVAL

MODEL: \\MODELS\NAME: FILE: NAME: PROJECT: 076N39\PROJECTS\DOT - OFFICE\District: B\Projects\076N39\CADD\DATA\CAD\Projects\076N39-11-11-typical.dgn

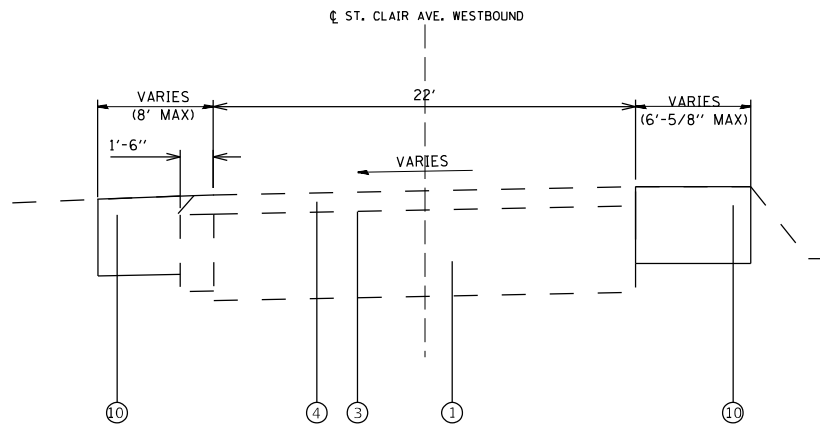
USER NAME = jeffersonts	DESIGNED - _____	REVISED - _____
	DRAWN - _____	REVISED - _____
PLOT SCALE = 100.0948' / in.	CHECKED - _____	REVISED - _____
PLOT DATE = 1/27/2021	DATE - _____	REVISED - _____

**STATE OF ILLINOIS
DEPARTMENT OF TRANSPORTATION**

TYPICAL SECTIONS

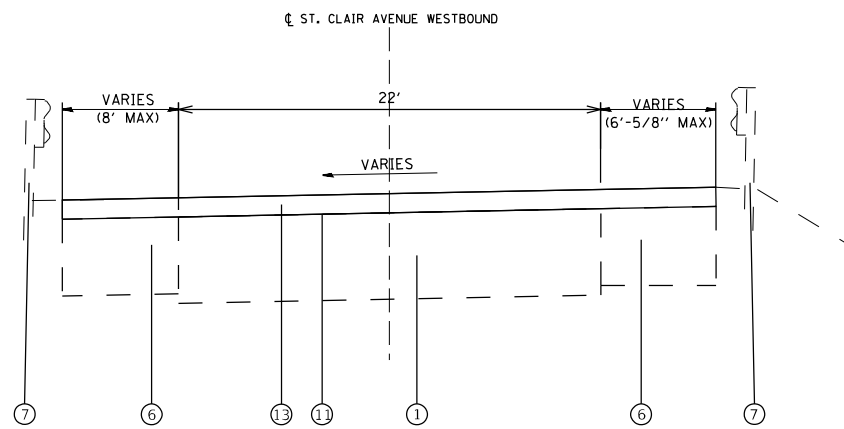
SCALE: _____ SHEET ____ OF ____ SHEETS STA. _____ TO STA. _____

F.A.U. RTE.	SECTION	COUNTY	TOTAL SHEETS	SHEET NO.
9166	33-2BR-2	ST. CLAIR	33	8
CONTRACT NO. 76N39				
ILLINOIS FED. AID PROJECT				



PROPOSED ROADWAY TYPICAL

STA. 89+03.25 TO STA. 86+63.75 (LEFT)
 STA. 85+69.75 TO STA. 83+29.75 (LEFT)
 STA. 88+50.53 TO STA. 86+63.25 (RIGHT)
 STA. 85+69.75 TO STA. 83+82.47 (RIGHT)



PROPOSED APPROACH TYPICAL

STA. 86+63.25 TO STA. 86+43.25
 STA. 85+89.75 TO STA. 85+69.75

LEGEND

- ① EXISTING PAVEMENT
- ② EXISTING BASE COURSE WIDENING - 8"
- ③ EXISTING BITUMINOUS MATERIALS (TACK COAT)
- ④ EXISTING HMA OVERLAY - 2"
- ⑤ EXISTING HMA OVERLAY - 3"
- ⑥ EXISTING BRIDGE APPROACH SHOULDERS
- ⑦ EXISTING GUARDRAIL
- ⑧ PROPOSED EARTH EXCAVATION WIDENING - 8"
- ⑨ PROPOSED AGGREGATE SHOULDER REMOVAL
- ⑩ PROPOSED BASE COURSE WIDENING
- ⑪ PROPOSED BITUMINOUS MATERIAL (TACK COAT)
- ⑫ PROPOSED HMA REMOVAL - 5"
- ⑬ PROPOSED HMA OVERLAY - 2"
- ⑭ PROPOSED HMA OVERLAY - 5"

REMOVAL

MODEL: 41001.DWG
 FILE: 41001.DWG
 PROJECT: 41001.DWG
 USER: jeffersons
 DATE: 1/27/2021

USER NAME = jeffersons	DESIGNED - _____	REVISED - _____
PLOT SCALE = 99.9681' / in.	DRAWN - _____	REVISED - _____
PLOT DATE = 1/27/2021	CHECKED - _____	REVISED - _____
	DATE - _____	REVISED - _____

**STATE OF ILLINOIS
 DEPARTMENT OF TRANSPORTATION**

TYPICAL SECTIONS

SCALE: _____ SHEET ____ OF ____ SHEETS STA. _____ TO STA. _____

F.A.U. RTE.	SECTION	COUNTY	TOTAL SHEETS	SHEET NO.
9166	33-2BR-2	ST. CLAIR	33	9
ILLINOIS FED. AID PROJECT			CONTRACT NO. 76N39	

WIDENING SCHEDULE						
LT/RT	STATION	TO	STATION	EARTH EXCAVATION	HMA BASE COURSE	
				WIDENING	WIDENING - 8"	
				CU YD	SQ YD	
ST. CLAIR AVENUE - EASTBOUND (S.N. 082-0033)						
RT	88+55.92	TO	86+43.42	38.37	106.25	
	86+43.42	TO	85+92.58	WIDENING OMISSION		
	85+92.58	TO	83+80.08	38.37	106.25	
LT	88+55.92	TO	86+43.42	38.37	106.25	
	86+43.42	TO	85+92.58	WIDENING OMISSION		
	85+92.58	TO	83+80.08	38.37	106.25	
ST. CLAIR AVENUE - WESTBOUND (S.N. 082-0034)						
RT	88+50.53	TO	86+63.25	45.09	93.64	
	86+63.25	TO	85+69.75	WIDENING OMISSION		
	85+69.75	TO	83+82.47	45.09	93.64	
LT	89+03.25	TO	86+63.25	77.04	120.00	
	86+63.25	TO	85+69.75	WIDENING OMISSION		
	85+69.75	TO	83+29.75	77.04	120.00	
TOTAL				399.00	853.00	

RESURFACING SCHEDULE							
STATION	TO	STATION	POLY HMA SURFACE	HMA BINDER	HMA SURFACE REMOVAL	WATERPROOFING	BITUMINOUS MATERIALS
			COURSE, IL-9.5, MIX "D", N70	COURSE, IL-9.5, MIX "B", N70			
			TONS	TONS	SQ YD	SQ YD	POUNDS
ST. CLAIR AVENUE - EASTBOUND (S.N. 082-0033)							
86+47.42	TO	86+43.42	1.64	2.46	14.67		6.60
86+43.42	TO	85+92.58	RESURFACING OMISSION				
85+92.58	TO	85+88.58	1.64	2.46	14.67		6.60
ST. CLAIR AVENUE - WESTBOUND (S.N. 082-0034)							
86+63.25	TO	86+43.25	8.27				15.61
86+43.25	TO	85+89.75	13.83			197.5	44.44
85+89.75	TO	85+69.75	8.27				15.61
TOTAL			35.0	5.0	30.0	198.0	92.0

MODEL - SHORDELNAMES
 FILE NAME - p:\data\m2021\p21\illinois\p21\DOT\Documents\DOT - Offices\Dis\ict - B\Project\082-0033\CADD\Drawings\082-0033-111-111-111.dgn

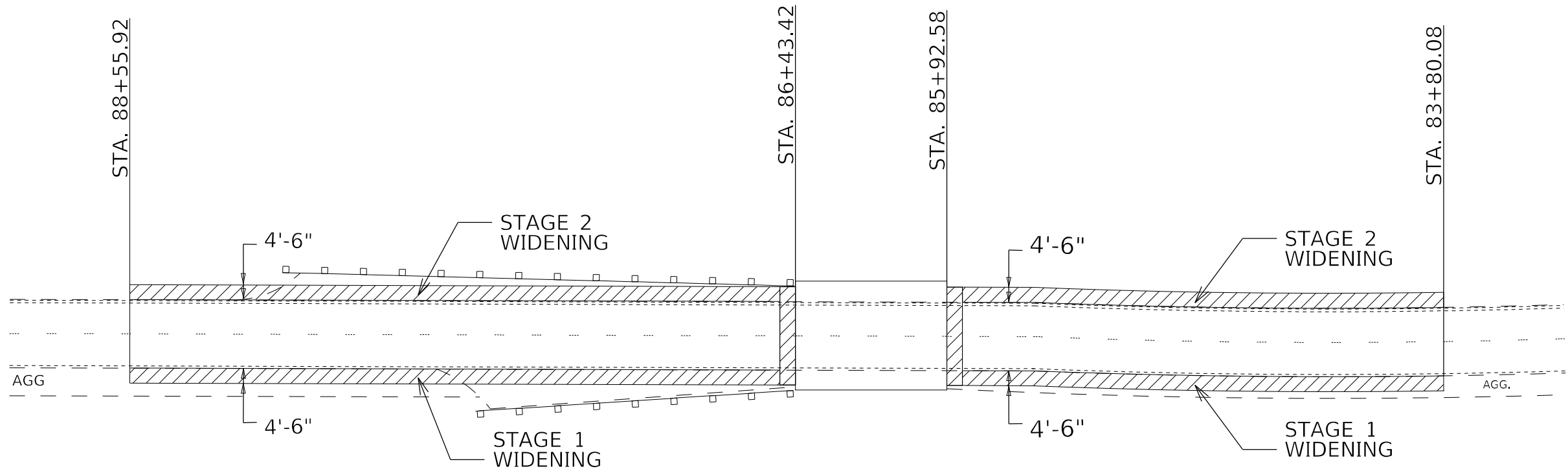
USER NAME = jeffersants	DESIGNED - _____	REVISED - _____
	DRAWN - _____	REVISED - _____
PLOT SCALE = 100.0755' / in.	CHECKED - _____	REVISED - _____
PLOT DATE = 1/27/2021	DATE - _____	REVISED - _____

**STATE OF ILLINOIS
DEPARTMENT OF TRANSPORTATION**

WIDENING AND RESURFACING SCHEDULES

SCALE: _____ SHEET ___ OF ___ SHEETS STA. _____ TO STA. _____

F.A.U. RTE.	SECTION	COUNTY	TOTAL SHEETS	SHEET NO.
9166	33-2BR-2	ST. CLAIR	33	10
CONTRACT NO. 76N39				
ILLINOIS FED. AID PROJECT				



 CONSTRUCTION AREA

MODEL: s:\MODELS\NAME: FILE NAME: p:\pub\trn\road\illinois\gov\PWIDOT\Documents\DOT Offices\District 8\Projects\833\833-CAD\Drawings\833-2BR-2.dwg

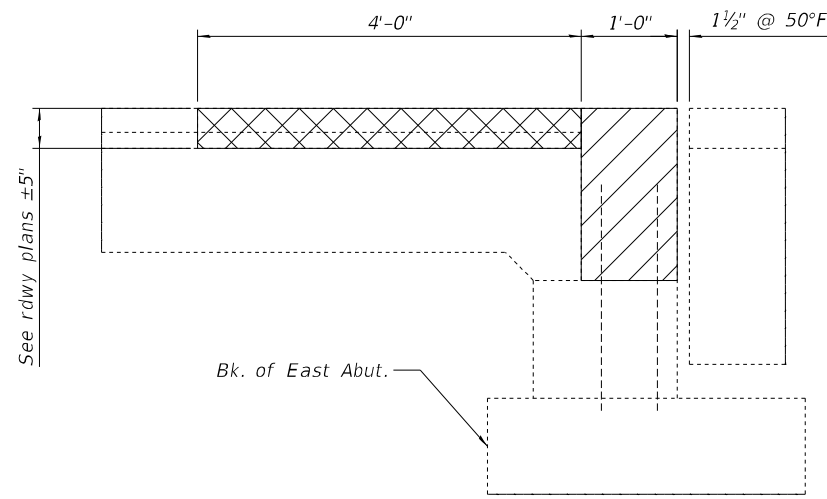
USER NAME = jeffersorts	DESIGNED - _____	REVISD - _____
	DRAWN - _____	REVISD - _____
PLOT SCALE = 99.9321' / in.	CHECKED - _____	REVISD - _____
PLOT DATE = 1/27/2021	DATE - _____	REVISD - _____

**STATE OF ILLINOIS
DEPARTMENT OF TRANSPORTATION**

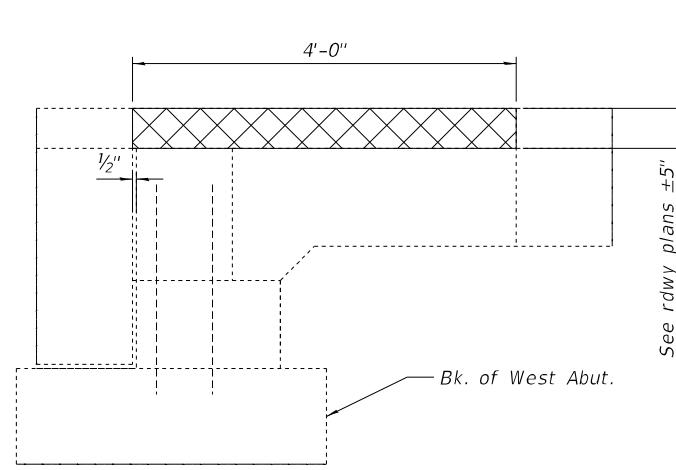
**WIDENING PLAN
SN 082-0033**

SCALE: _____ SHEET ____ OF ____ SHEETS STA. _____ TO STA. _____

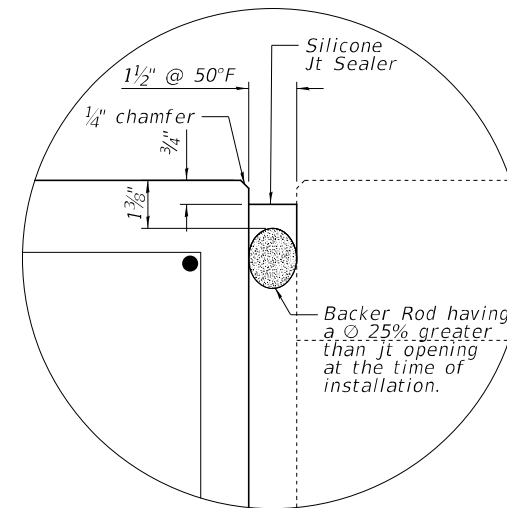
F.A.U. RTE. 9166	SECTION 33-2BR-2	COUNTY ST. CLAIR	TOTAL SHEETS 33	SHEET NO. 12
CONTRACT NO. 76N39			ILLINOIS FED. AID PROJECT	



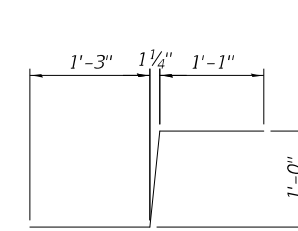
SECTION A-A



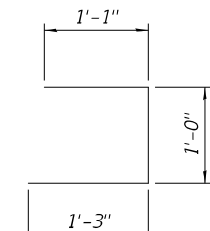
SECTION B-B



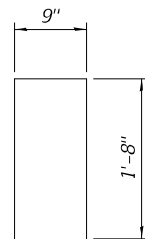
DETAIL "A"



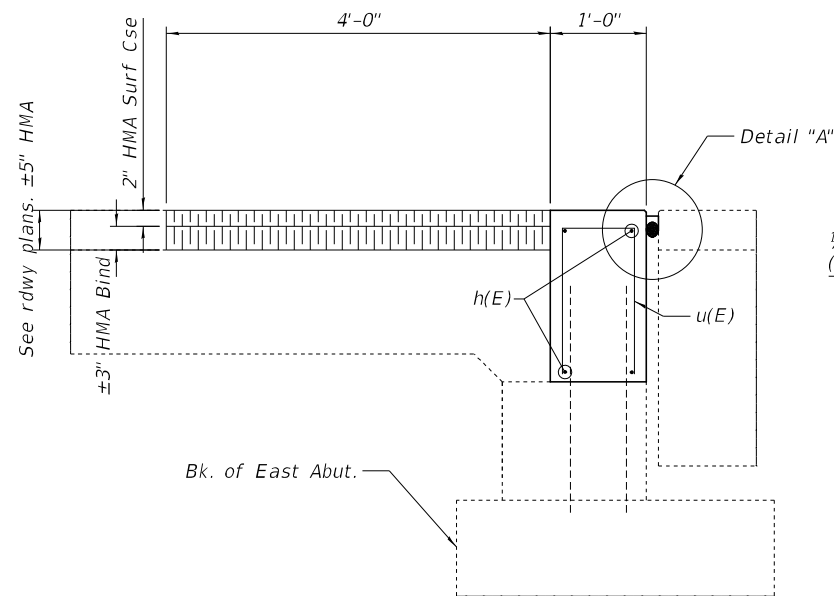
BAR d1(E)



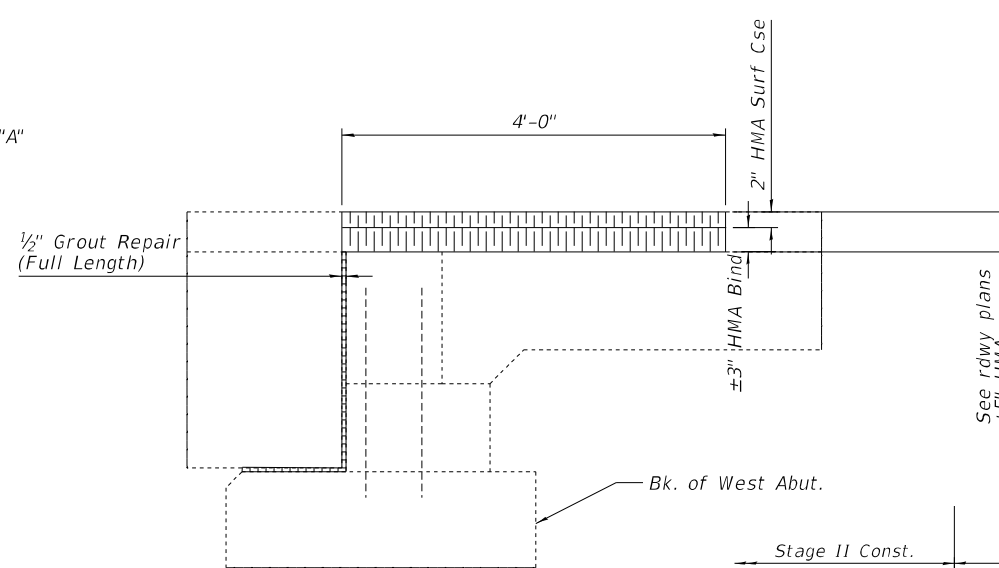
BAR d2(E)



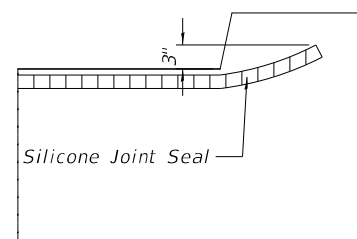
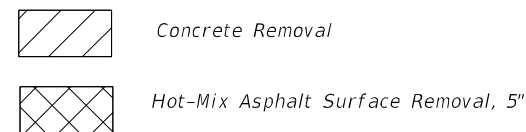
BAR u(E)



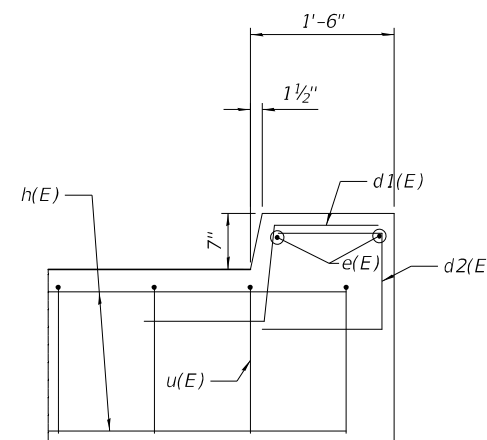
SECTION C-C



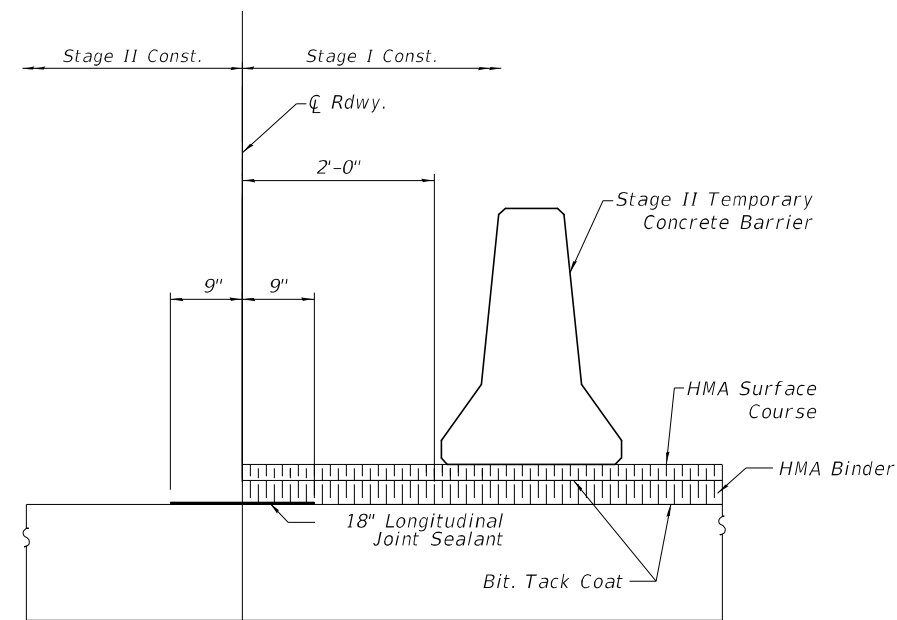
SECTION D-D



TYPICAL END OF SEAL TREATMENT



CURB SECTION



LJS AT STAGELINE

BILL OF MATERIAL

Bar	No.	Size	Length	Shape
d1(E)	4	#5	3'-6"	┌
d2(E)	4	#5	3'-4"	└
e(E)	4	#5	0'-9"	—
h(E)	8	#5	17'-9"	—
u(E)	36	#5	4'-1"	▭
Concrete Removal			Cu. Yd.	2.5
Concrete Superstructure			Cu. Yd.	2.5
Reinforcement Bars, Epoxy Coated			Pound	330

MODEL: 02/20/2021 7:51:39-003
FILE NAME: p:\projects\082-0033-003\082-0033-003\082-0033-003.dgn

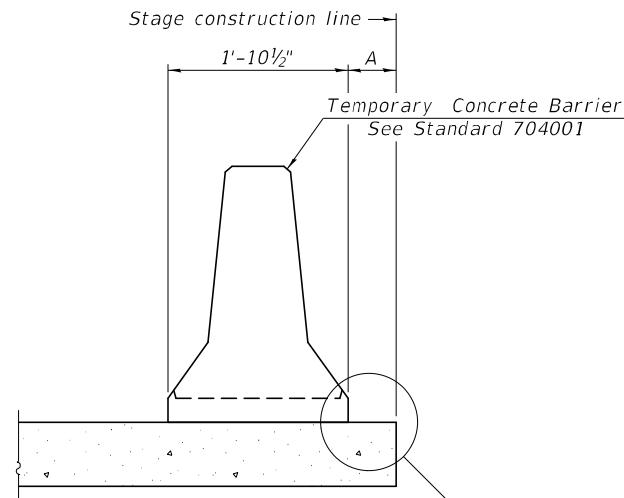
USER NAME = vlrsonay	DESIGNED - AYV	REVISED -
DRAWN - AYV	REVISIONS -	
PLOT SCALE = 2:0.0000 "/>		

STATE OF ILLINOIS
DEPARTMENT OF TRANSPORTATION

JOINT & LJS AT STAGELINE DETAILS
SN 082 - 0033

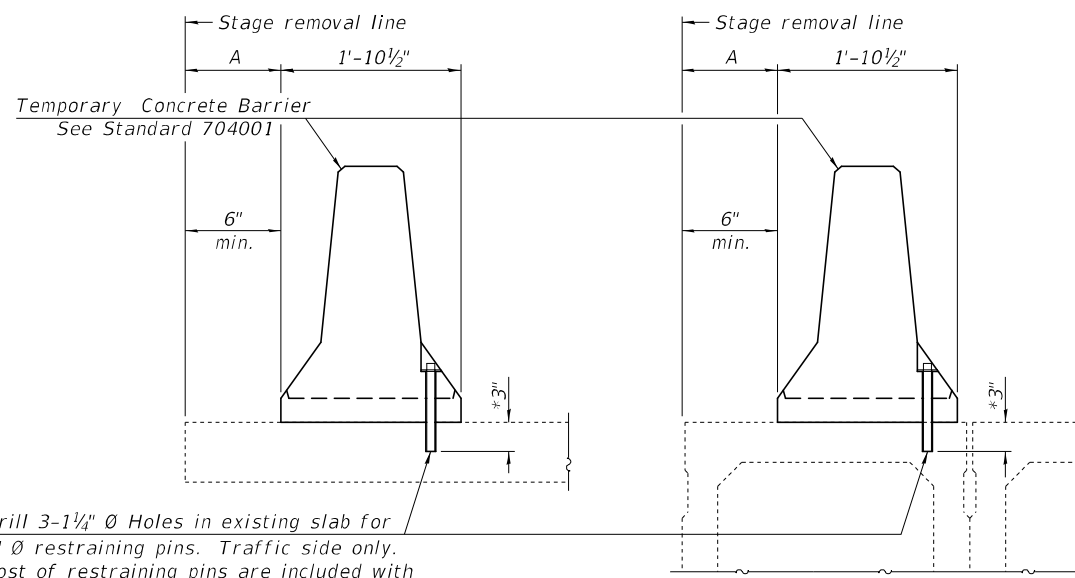
SCALE: SHEET 3 OF 5 SHEETS STA. TO STA.

F.A.U. RTE.	SECTION	COUNTY	TOTAL SHEETS	SHEET NO.
9166	33-2BR-2	ST. CLAIR	33	16
ILLINOIS FED. AID PROJECT			CONTRACT NO. 76N39	



When "A" is 3'-1" or less, the temporary concrete barrier shall be restrained to the new slab according to Detail I, II or III. No restraint is required when "A" is greater than 3'-1".

NEW SLAB OR NEW DECK BEAM

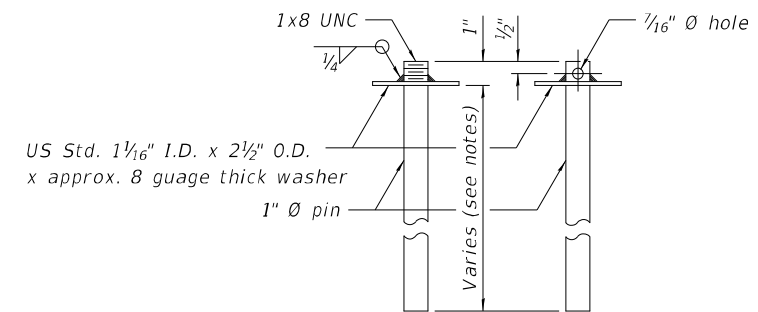


Drill 3-1/4" Ø Holes in existing slab for 1" Ø restraining pins. Traffic side only. Cost of restraining pins are included with Temporary Concrete Barrier. No restraint is required when "A" is greater than 3'-1".

EXISTING SLAB

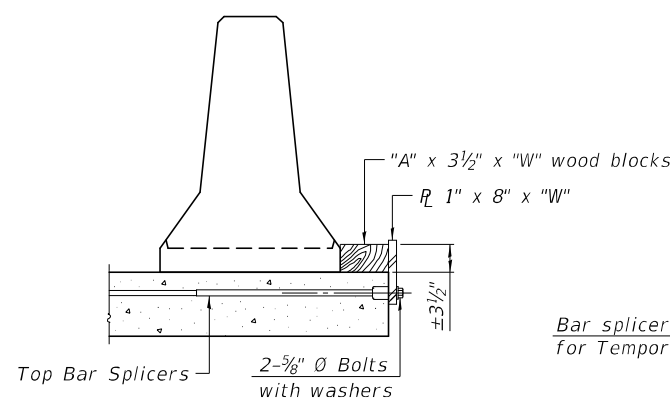
* When hot-mix asphalt wearing surface is present, embedment shall be 3" plus the wearing surface depth.

EXISTING DECK BEAM

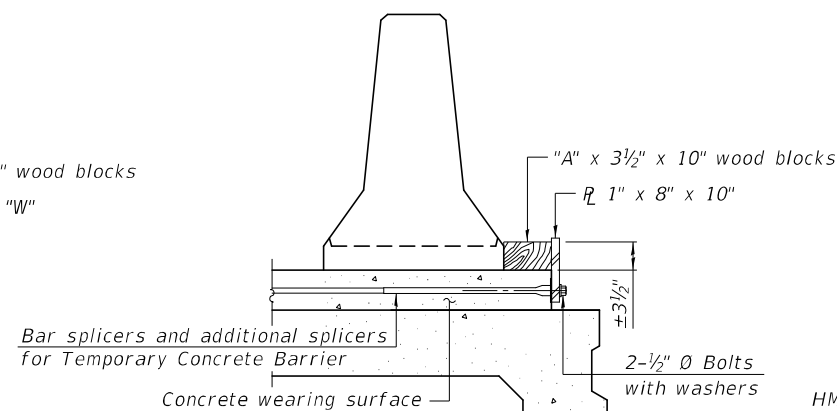


RESTRAINING PIN

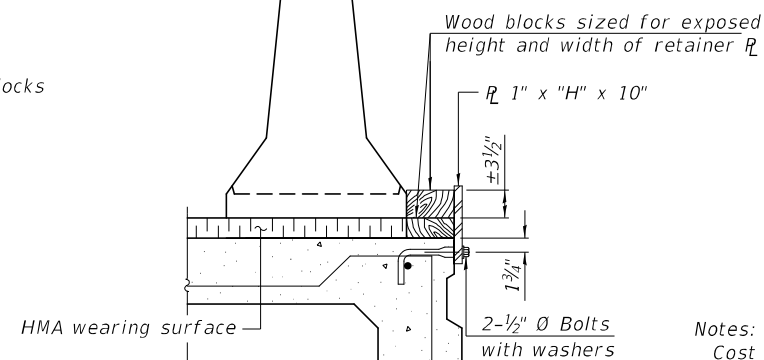
SECTIONS THRU SLAB OR DECK BEAM



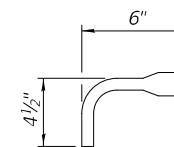
DETAIL I



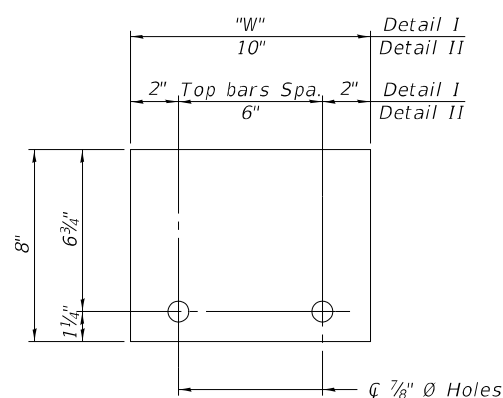
DETAIL II



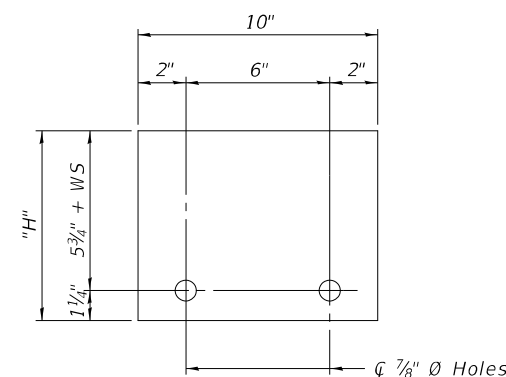
DETAIL III



BAR SPLICER FOR #4 BAR - DETAIL III



STEEL RETAINER 1" x 8" x "W"
(Detail I and II)



STEEL RETAINER 1" x "H" x 10"
(Detail III)

Notes:

Cost of retainer assembly is included with Temporary Concrete Barrier. A retainer assembly shall be located at the approximate center of each temporary concrete barrier.

The retainer plate shall not be removed until the concrete on the adjacent stage is ready to be poured. For Detail III applications the retainer plate shall not be removed until just prior to placing the adjacent beam.

When the 'A' dimension is less than 1 1/2', the wood block shall be omitted and the barrier shall be placed in direct contact with the steel retainer plate. For deck beam applications the minimum required 'A' distance is 6' to accommodate the shear key clamping device.

Detail I - Installation for a new bridge deck or bridge slab.

Detail II - Installation for a new deck beam with an initial concrete wearing surface. Additional bar splicers shall be provided at 6'-0" centers and paired with the bar splicers of the concrete wearing surface reinforcement to accommodate the installation of the retainer assemblies. The cost of the additional bar splicers is included with the concrete wearing surface.

Detail III - Installation for a new deck beam with no initial wearing surface or with an initial hot-mix asphalt (HMA) wearing surface present. The deck beam directly beneath the temporary concrete barrier shall be fabricated with bar splicer inserts in the side of the beam, as detailed, to accommodate the installation of the retainer assemblies. A pair of bar splicers, 6" apart, shall be placed at 6'-0" centers along the length of the beam. The cost of the bar splicers is included with the deck beam.

R-27 2-17-2017

USER NAME = vlrsonay	DESIGNED - AYW	REVISED -
DRAWN - AYW	REVISIONS -	
PLOT SCALE = 0:2.0000' = 1" / in.	CHECKED -	REVISED -
PLOT DATE = 1/22/2021	DATE -	REVISED -

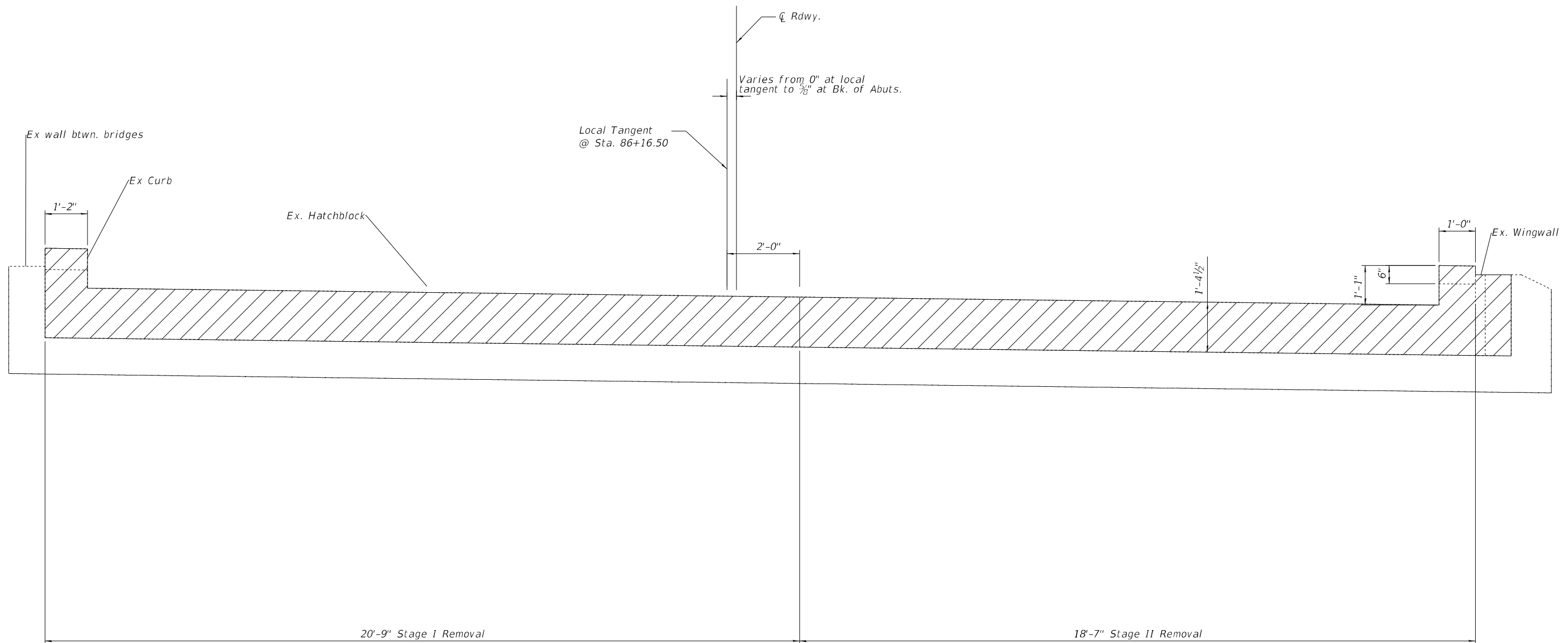
STATE OF ILLINOIS
DEPARTMENT OF TRANSPORTATION

TEMPORARY CONCRETE BARRIER FOR STAGE CONSTRUCTION
STRUCTURE NO. 082 - 0033

SCALE: SHEET 5 OF 5 SHEETS STA. TO STA.

F.A.U. RTE.	SECTION	COUNTY	TOTAL SHEETS	SHEET NO.
9166	33-2BR-2	ST. CLAIR	33	18
			CONTRACT NO. 76N39	
		ILLINOIS	FED. AID PROJECT	

MODEL: 02/03/19-78199-005
FILE NAME: p:\illinois\contract\illinois\gov\PHWDOT\Documents\IBDOT_Offices\District 8\Projects\082-0033\2017-2018\27.dgn



W. Abut shown, Looking West
(E. Abut similar)

MODEL: 02/20/2024 7:51:35 AM
FILE NAME: P:\Illinois\GIS\DOT\Documents\DOT_Offices\District 8\Projects\082-0034\CADD\Structures\0820034-76N39.dgn

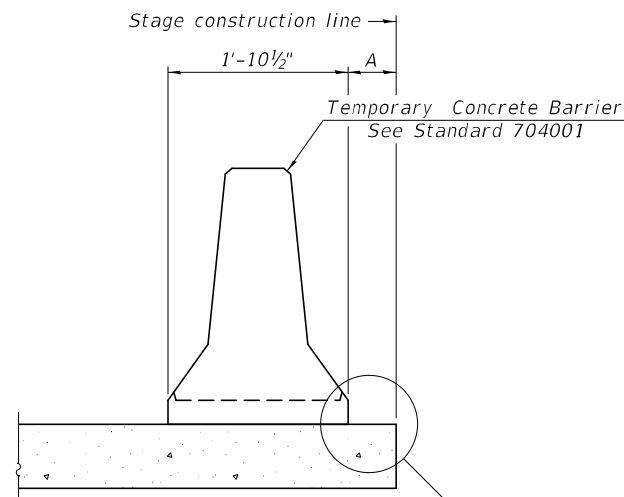
USER NAME = vlrsonay	DESIGNED - AYV	REVISED -
	DRAWN - AYV	REVISED -
PLOT SCALE = 2:10,000 1" / in.	CHECKED -	REVISED -
PLOT DATE = 11/13/2020	DATE -	REVISED -

**STATE OF ILLINOIS
DEPARTMENT OF TRANSPORTATION**

**ELEVATION HATCHBLOCK, CURB & WINGWALL REMOVAL
SN 082-0034**

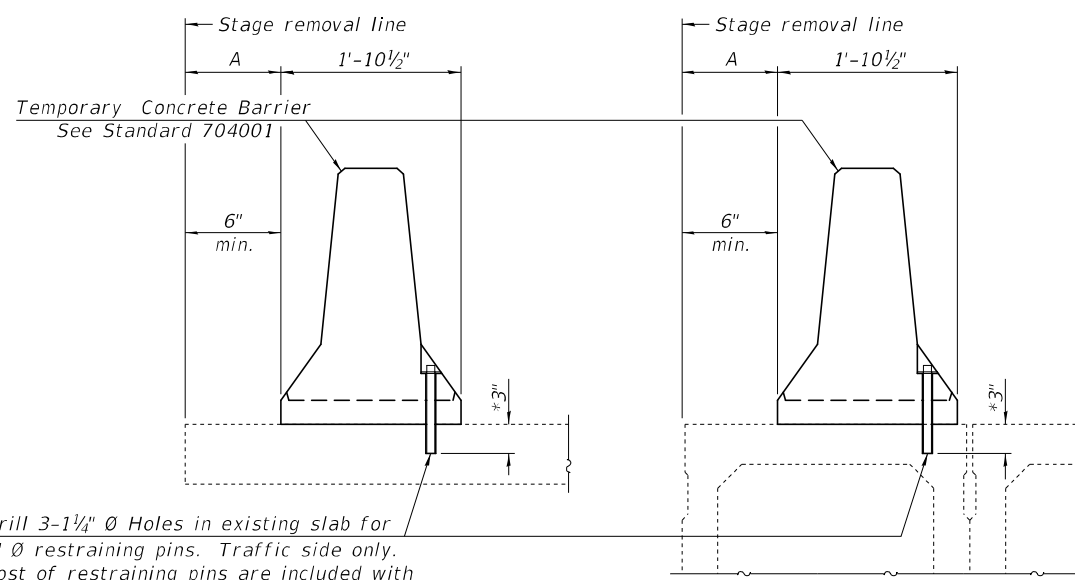
SCALE: SHEET 4 OF 15 SHEETS STA. TO STA.

F.A.U. RTE.	SECTION	COUNTY	TOTAL SHEETS	SHEET NO.
9166	33-2BR-2	ST. CLAIR	33	22
CONTRACT NO. 76N39			ILLINOIS FED. AID PROJECT	



When "A" is 3'-1" or less, the temporary concrete barrier shall be restrained to the new slab according to Detail I, II or III. No restraint is required when "A" is greater than 3'-1".

NEW SLAB OR NEW DECK BEAM



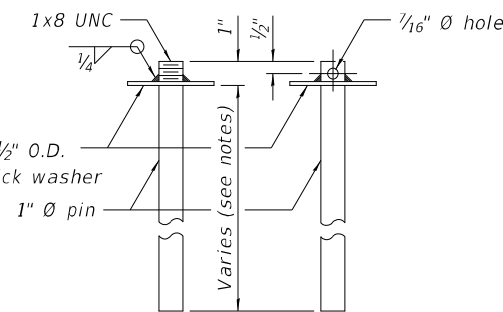
Drill 3-1/4" Ø Holes in existing slab for 1" Ø restraining pins. Traffic side only. Cost of restraining pins are included with Temporary Concrete Barrier. No restraint is required when "A" is greater than 3'-1".

EXISTING SLAB

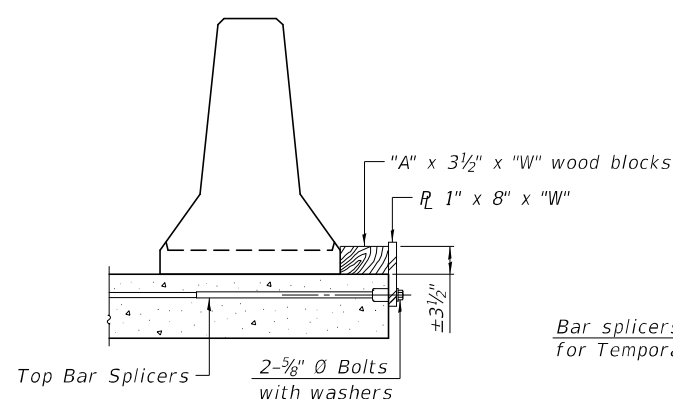
* When hot-mix asphalt wearing surface is present, embedment shall be 3" plus the wearing surface depth.

EXISTING DECK BEAM

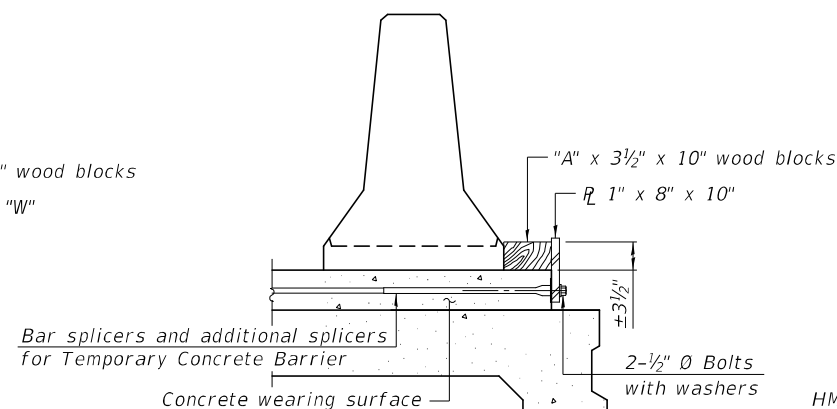
SECTIONS THRU SLAB OR DECK BEAM



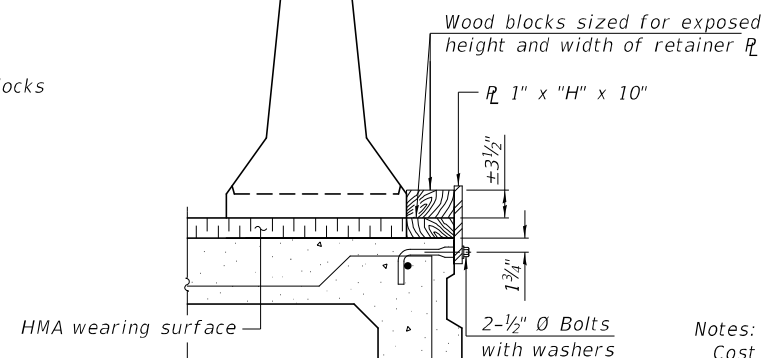
RESTRAINING PIN



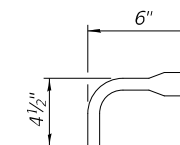
DETAIL I



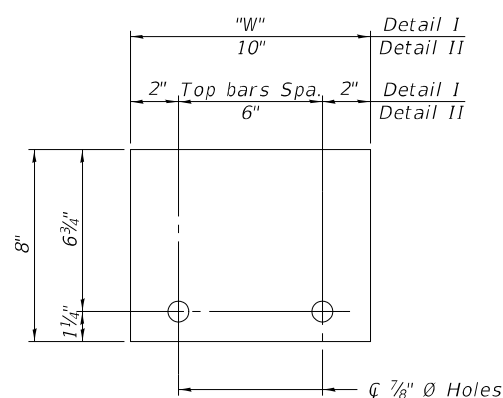
DETAIL II



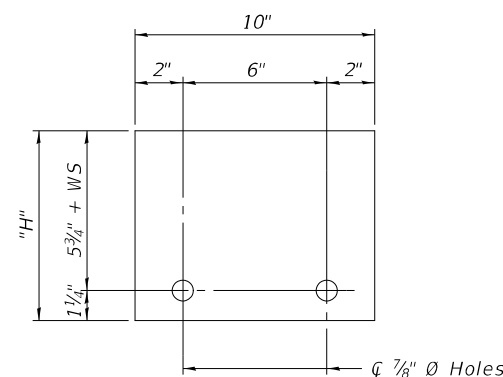
DETAIL III



BAR SPLICER FOR #4 BAR - DETAIL III



STEEL RETAINER R 1" x 8" x "W"
(Detail I and II)



STEEL RETAINER R 1" x "H" x 10"
(Detail III)

Notes:
 Cost of retainer assembly is included with Temporary Concrete Barrier.
 A retainer assembly shall be located at the approximate center of each temporary concrete barrier.
 The retainer plate shall not be removed until the concrete on the adjacent stage is ready to be poured. For Detail III applications the retainer plate shall not be removed until just prior to placing the adjacent beam.
 When the 'A' dimension is less than 1 1/2', the wood block shall be omitted and the barrier shall be placed in direct contact with the steel retainer plate.
 For deck beam applications the minimum required 'A' distance is 6' to accommodate the shear key clamping device.

Detail I - Installation for a new bridge deck or bridge slab.
 Detail II - Installation for a new deck beam with an initial concrete wearing surface. Additional bar splicers shall be provided at 6'-0" centers and paired with the bar splicers of the concrete wearing surface reinforcement to accommodate the installation of the retainer assemblies. The cost of the additional bar splicers is included with the concrete wearing surface.
 Detail III - Installation for a new deck beam with no initial wearing surface or with an initial hot-mix asphalt (HMA) wearing surface present. The deck beam directly beneath the temporary concrete barrier shall be fabricated with bar splicer inserts in the side of the beam, as detailed, to accommodate the installation of the retainer assemblies. A pair of bar splicers, 6" apart, shall be placed at 6'-0" centers along the length of the beam. The cost of the bar splicers is included with the deck beam.

R-27

8-11-2017

USER NAME	vlrsonay	DESIGNED -	AYV	REVISED -	
DRAWN		DRAWN -	AYV	REVISED -	
PLOT SCALE	= 0:2.0000' = 1" / in.	CHECKED -		REVISED -	
PLOT DATE	= 11/13/2020	DATE -		REVISED -	

STATE OF ILLINOIS
DEPARTMENT OF TRANSPORTATION

TEMPORARY CONCRETE BARRIER FOR STAGE CONSTRUCTION
STRUCTURE NO. 082-0034

SCALE: SHEET 7 OF 15 SHEETS STA. TO STA.

F.A.U. RTE.	SECTION	COUNTY	TOTAL SHEETS	SHEET NO.
9166	33-2BR-2	ST. CLAIR	33	25
			CONTRACT NO. 76N39	
		ILLINOIS FED. AID PROJECT		

MODEL: 0820034-76N39-007
FILE NAME: p:\illinois\0820034-76N39\CADD\Structures\0820034-76N39.dgn

Bench Mark: Chiseled "d" on top of west abutment, N.E. corner of the eastbound bridge over Harding Ditch, Elev. 422.35

Existing Structure: 082-0034 is 53'-10" long by 33'-10" wide, built as S.B.I. Rte. 12, Sec. 33-RB in 1940.
The existing R.C. Girder superstructure shall be replaced with a new 7 $\frac{1}{2}$ " slab on wide flange beams.
Stage construction shall be used, so as to maintain one way traffic during reconstruction.

No Salvage.

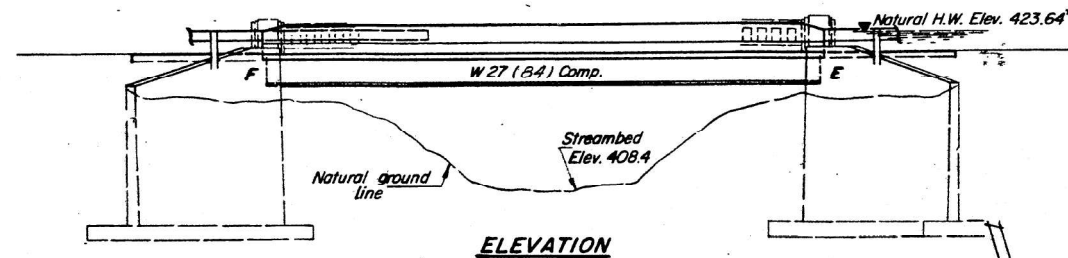
STATE OF ILLINOIS
DEPARTMENT OF TRANSPORTATION

PROJECT NO.	33-2BR-2	SECTION	ST. CLAIR	NO. OF SHEETS	6	SHEET NO.	11
-------------	----------	---------	-----------	---------------	---	-----------	----

FOR INFORMATION ONLY

GENERAL NOTES

Calculated weight of Structural Steel = 9,240 lbs. (M 183)
= 25,790 lbs. (M 223) Gr. 50
The zinc-silicate and vinyl paint system shall be used for shop and field painting of Structural Steel except where otherwise noted.
Field welding of construction accessories will not be permitted to the bottom flange of beams. Field welding in other areas will be permitted only when approved by the Engineer.
Anchor bolts shall be set before bolting diaphragms over supports.
The main load carrying member components subject to tensile stress shall conform to the Supplemental Requirements for Notch Toughness Zone 2. These Components are the wide flange beams.
Reinforcement bars shall conform to the requirements of AASHTO M-31 or M-53 Grade 60.
Plan dimensions and details relative to existing structure have been taken from existing plans and are subject to nominal construction variations. It shall be the Contractor's responsibility to verify such dimensions and details in the field and make necessary approved adjustments prior to construction or ordering of materials. Such variations shall not be cause for additional compensation for a change in the scope of the work, however, the Contractor will be paid for the quantity actually furnished at the unit price bid for the work.

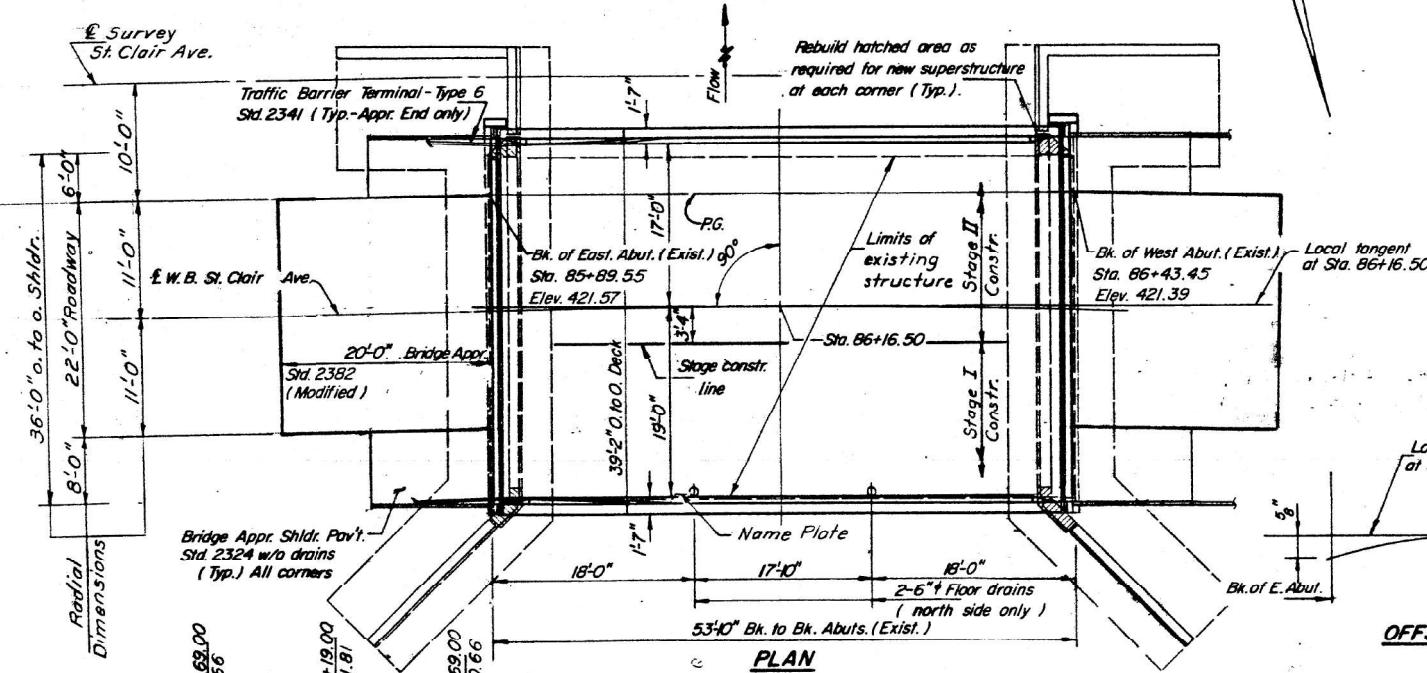


STA. 86+16.50
BUILT 198 BY
STATE OF ILLINOIS
F.A.U. RT. 9166 SEC. 33-1BR-1
PROJECT BHM-5011(10)
LOADING HS20
STR. No. 082-0034

NAME PLATE
See Std. 2113

TOTAL BILL OF MATERIAL

Item	Unit	Super	Sub	Total
Removal of Existing Superstructures	Each	1		1
Concrete Removal	Cu. Yd.		9	9
Structure Excavation	Cu. Yd.		17	17
Floor Drains	Each	2		2
Protective Coat	Sq. Yd.	249		249
Class X Concrete	Cu. Yd.	63.4	10.6	74.0
Structural Steel	L. Sum	1		1
Stud Shear Connectors	Each	1,056		1,056
Reinforcement Bars	Lbs.		2,190	2,190
Reinforcement Bars (Epoxy Coated)	Lbs.	13,250		13,250
Name Plates	Each	1		1
Preformed Joint Seal (1/4")	Lin. Ft.	39		39
Preformed Joint Seal (2 1/2")	Lin. Ft.	39		39
Elastomeric Bearing Assembly, Type I	Each		6	6
Repair Concrete Structures	Sq. Ft.		10	10



OFFSET SKETCH

SURVEY E ST. CLAIR Ave.
CURVE DATA No. 5

$\Delta = 26^{\circ}44'00''$
 $D = 0^{\circ}48'00''$
 $R = 7161.98'$
 $T = 1701.82'$
 $L = 3341.67'$
 $E = 199.42'$
 $S.E. = 0.0125' / \%$
 $P.I. Sta. 92+81.20$
 $P.C. Sta. 75+79.38$
 $P.T. Sta. 109+21.05$

WATERWAY INFORMATION

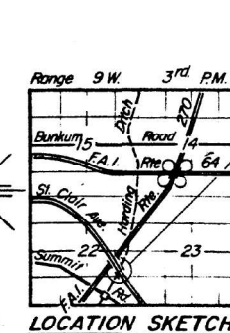
Drainage Area =		Low Grade Elev.		Sta.	
Flood	Freq. Yr.	Opening C.F.S.	Sq. Ft. Prop.	Head-Fl. Exist.	Headwater-EI. Prop.
Design	50	1945	296	296	423.64
Base	100	1945	296	296	423.64
Overtopping					
Max. Calc.	500	1945	296	296	423.64

DESIGN SPECIFICATIONS
AASHTO (1983) (New Constr.)

LOADING HS 20-44
Allow 25" / sq.ft. for future wearing surface.

DESIGN STRESSES

$f_c = 3,500$ psi
 $f_y = 60,000$ psi (Reinf.)
 $f_y = 50,000$ psi (Struct. SH.) (AASHTO M223, Grade 50) E_{ms}
 $f_y = 36,000$ psi (Structural Steel)



LOCATION SKETCH

GENERAL PLAN
W.B. St. CLAIR Ave. Over Harding Ditch
F.A.U. Rte. 9166 SECTION 33-1BR-1
St. CLAIR COUNTY
Sta. 86+16.50
STRUCTURE NUMBER 082-0034

DESIGNED	Mork Maday
CHECKED	[Signature]
DRAWN	FMS
CHECKED	[Signature]

March 19, 1985
EXAMINED [Signature]
PASSED [Signature]
APPROVED [Signature]
DIRECTOR OF HIGHWAYS



STATE OF ILLINOIS
DEPARTMENT OF TRANSPORTATION

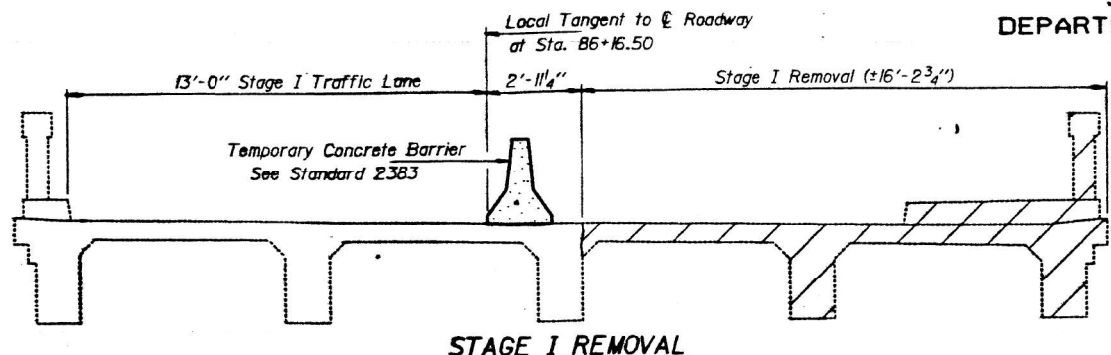
FOR INFORMATION ONLY - GP&E, 1986 RECONSTRUCTION
SN 082-0034

F.A.U. RTE.	SECTION	COUNTY	TOTAL SHEETS	SHEET NO.
9166	33-2BR-2	ST. CLAIR	33	27
CONTRACT NO. 76N39			ILLINOIS FED. AID PROJECT	

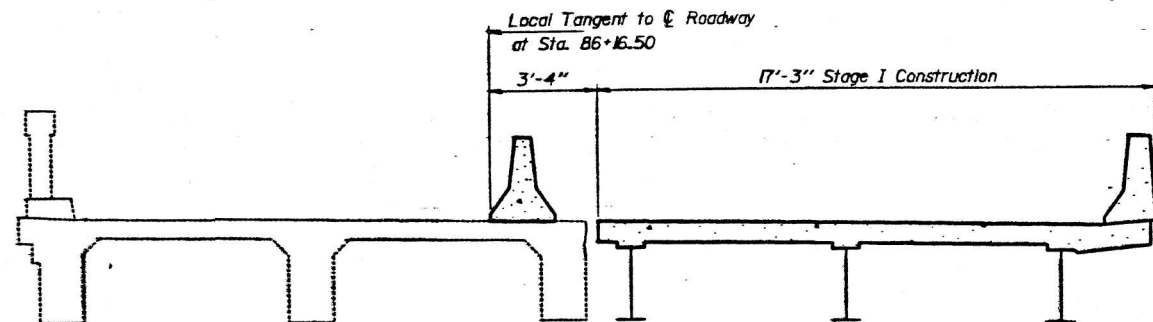
USER NAME = vlnsonay	DESIGNED - AYW	REVISED -
PLOT SCALE = 0.2,0000 "/> <td>DRAWN - AYW</td> <td>REVISED -</td>	DRAWN - AYW	REVISED -
PLOT DATE = 11/13/2020	CHECKED -	REVISED -
	DATE -	REVISED -

STATE OF ILLINOIS
DEPARTMENT OF TRANSPORTATION

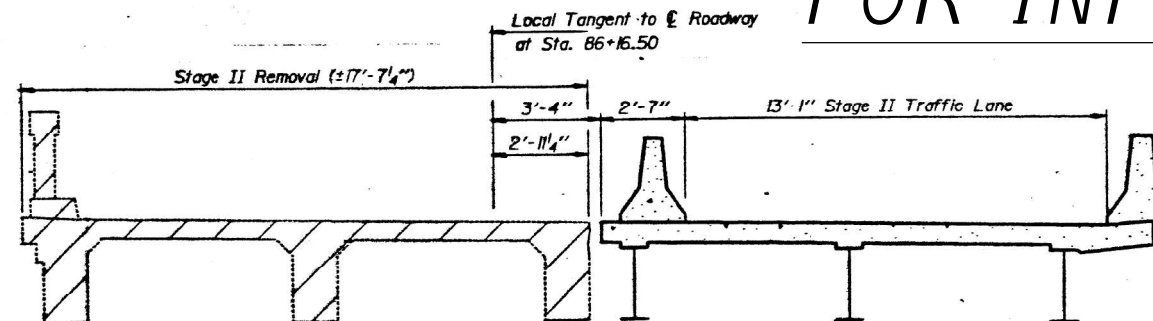
PROJECT NO.	SECTION	COUNTY	SHEET NO.	TOTAL SHEETS
33-184-1	ST. CLAIR	16	7	11 SHEETS



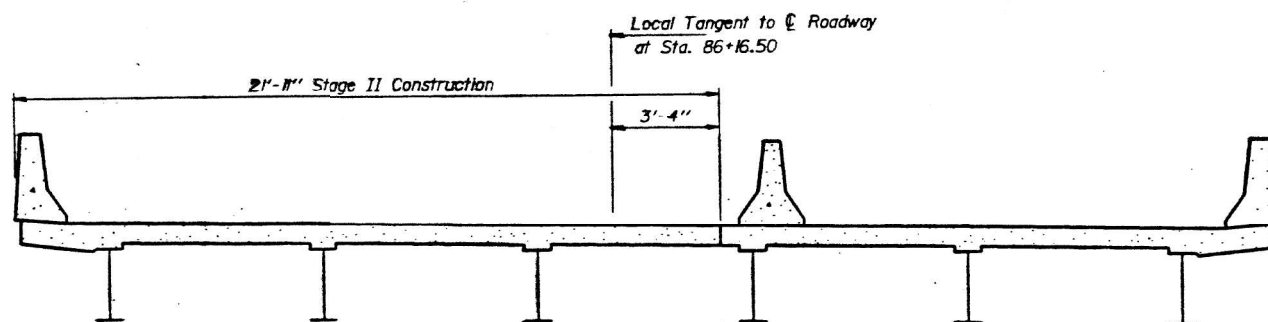
STAGE I REMOVAL



STAGE I CONSTRUCTION

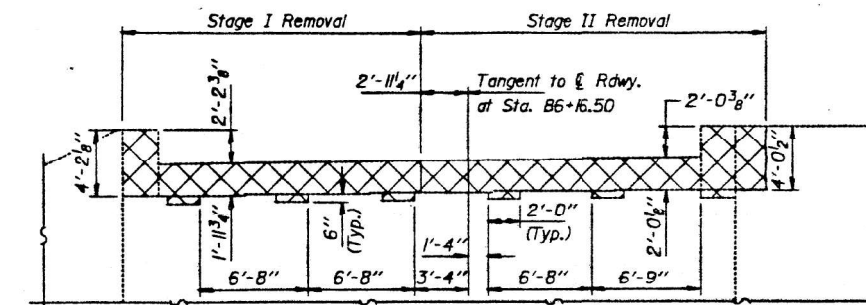


STAGE II REMOVAL

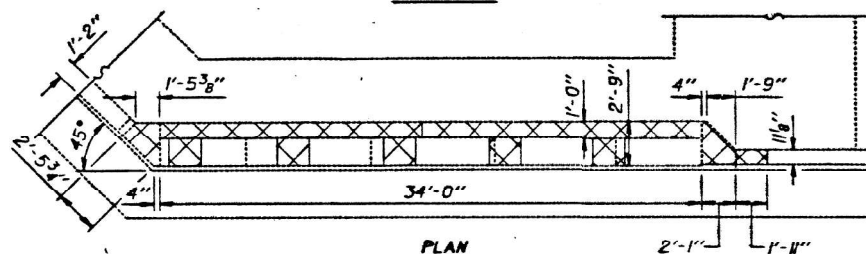


STAGE II CONSTRUCTION

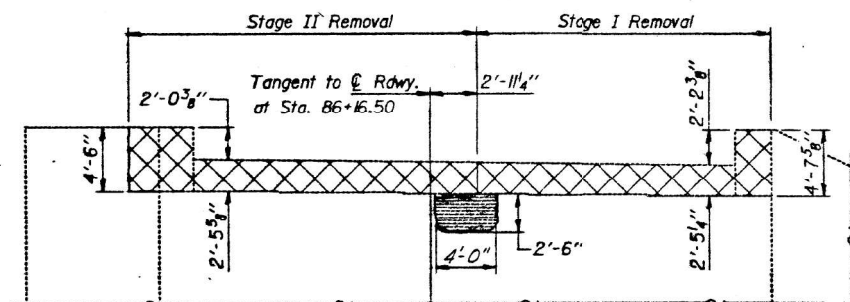
FOR INFORMATION ONLY



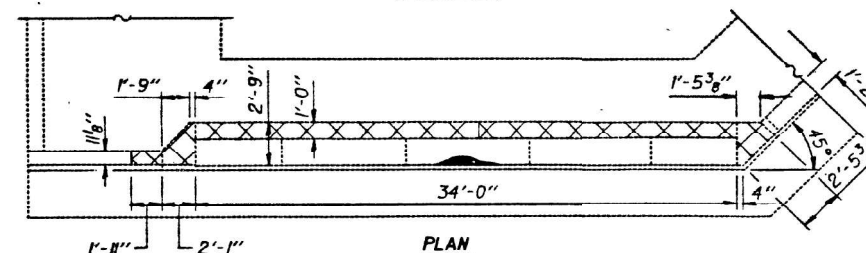
ELEVATION



PLAN
EAST ABUTMENT



ELEVATION



PLAN
WEST ABUTMENT
CONCRETE REMOVAL

DESIGNED	Mark Maday	EXAMINED	James J. Reiburn
CHECKED	A. L. Brown	PREPARED	James J. Reiburn
DRAWN	R. P. Summer	APPROVED	James J. Reiburn
CHECKED	A. L. B.		

March 19 1985

Notes: All cross sections are looking West.
Hatched area indicates "Removal of Existing Superstructures."
Cross hatched area indicates "Concrete Removal". Reinforcement extending into removed area shall be cleaned and incorporated into the new construction. Quantities of Concrete Removal are billed on Sheets 9 & 10.
Shaded area indicates "Repair Concrete Structures".
Quantity of Temporary Concrete Barrier included with Roadway Plans.

STAGE CONSTRUCTION DETAILS
F.A.U. RT. 9166 SEC. 33-1BR-1
ST. CLAIR COUNTY
STA. 86+16.50

MODEL: 02/20/2014 7:51:39 AM
FILE NAME: p:\admin\constr\illinois\p\p\DOT\Documents\DOT - Office\Drawings\Projects\0820034-76N39.dgn

USER NAME	= vlnsonay	DESIGNED	- AYW	REVISED	-
		DRAWN	- AYW	REVISED	-
PLOT SCALE	= 0:2.0000 "/ in.	CHECKED	-	REVISED	-
PLOT DATE	= 11/13/2020	DATE	-	REVISED	-

STATE OF ILLINOIS
DEPARTMENT OF TRANSPORTATION

F.I.O. - PARTIAL REMOVAL OF SUBSTRUCTURE (1986 RECONSTRUCTION)
SN 082 - 0034

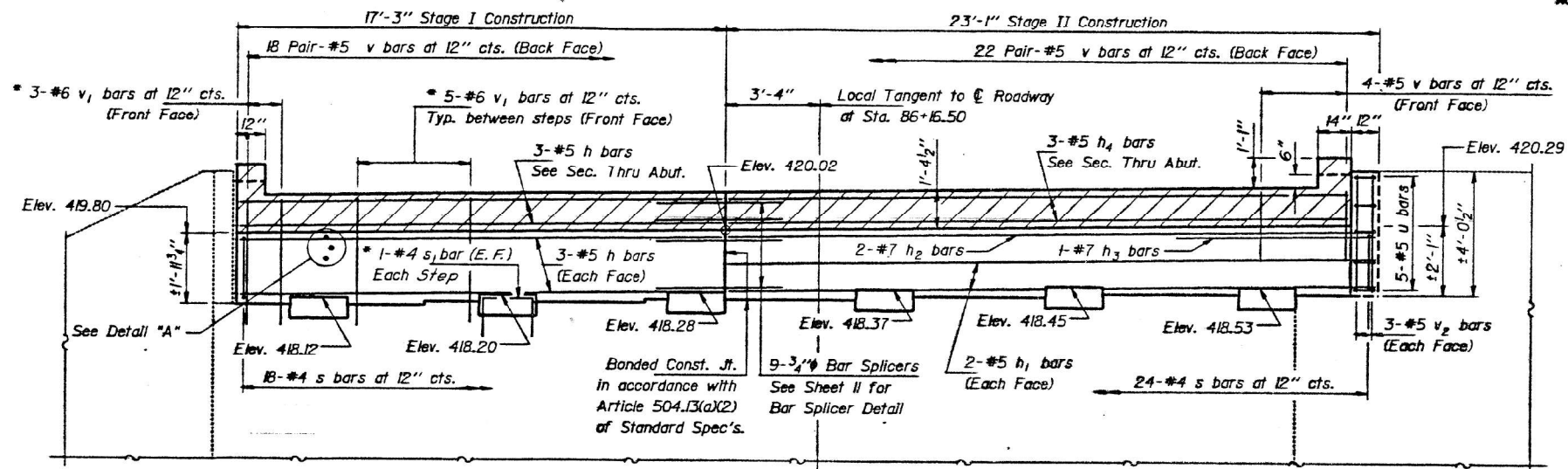
SCALE: SHEET 10 OF 15 SHEETS STA. TO STA.

F.A.U. RTE.	SECTION	COUNTY	TOTAL SHEETS	SHEET NO.
9166	33-2BR-2	ST CLAIR	33	28
			CONTRACT NO. 76N39	
		ILLINOIS	FED. AID PROJECT	

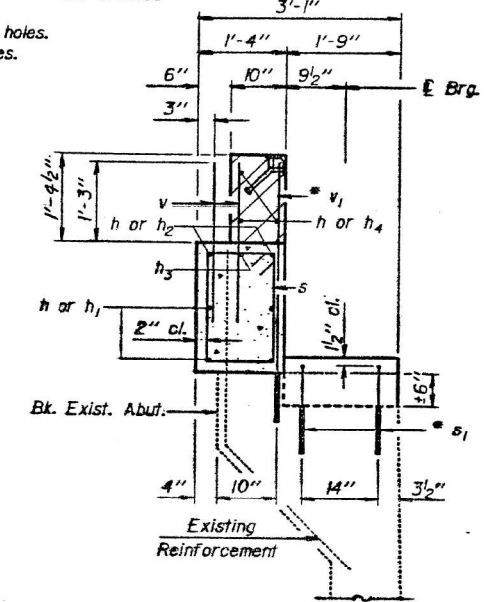
STATE OF ILLINOIS
DEPARTMENT OF TRANSPORTATION

PROJECT NO.	SECTION	SHEET NO.	TOTAL SHEETS
ST. CLAIR	16	14	11 SHEETS

Notes: All edges shall have standard $\frac{3}{4}$ " chamfers.
Hatched area to be poured after superstructure forms have been removed. Quantity of Class X Concrete is billed with Superstructure on Sheet 5.
Epoxy grout v_1 bars in $1\frac{1}{2}$ " x 9" holes.
Epoxy grout s_1 bars in $\frac{3}{4}$ " x 11" holes.
See special provisions.

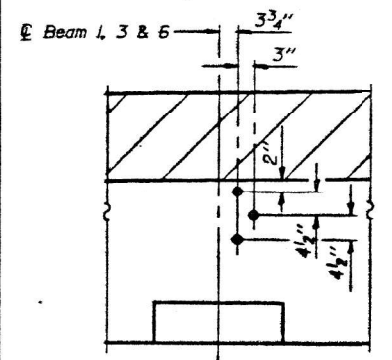


ELEVATION



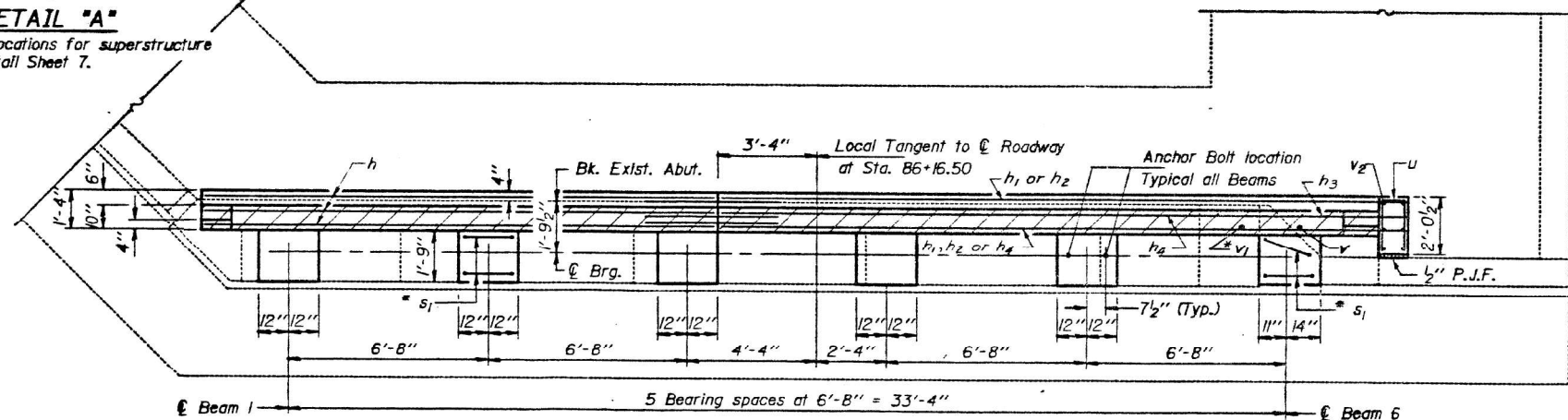
SEC. THRU ABUT.

FOR INFORMATION ONLY

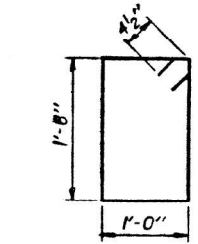


DETAIL "A"

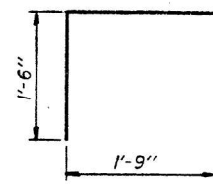
Anchor bolt locations for superstructure retainer see detail Sheet 7.



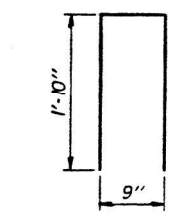
PLAN



BAR s



BAR s1



BAR u

BILL OF MATERIAL

Bar	No.	Size	Length	Shape
h	9	#5	17'-0"	—
h1	4	#5	22'-10"	—
h2	2	#7	22'-10"	—
h3	1	#7	7'-0"	—
h4	3	#5	21'-10"	—
s	42	#4	6'-1"	□
s1	12	#4	4'-9"	□
v	84	#5	2'-6"	—
v1	28	#6	4'-0"	—
v2	6	#5	3'-9"	—
u	5	#5	4'-5"	—
Reinforcement Bars			Lbs.	1070
Class X Concrete			Cu. Yds.	4.9
Concrete Removal			Cu. Yds.	4

EAST ABUTMENT
F.A.U. RT. 9166 SEC. 33-IBR-1
ST. CLAIR COUNTY
STA. 86+16.50

DESIGNED Mark Maday
CHECKED G. L. Brown
DRAWN R. P. Summer
CHECKED G. L. B.
EXAMINED James J. Robinson
PASSED James J. Robinson
APPROVED James J. Robinson
DIRECTOR OF HIGHWAYS

USER NAME = vlnsonay	DESIGNED - AYW	REVISED -
PLOT SCALE = 0.2,0000 "/> <td>DRAWN - AYW</td> <td>REVISED -</td>	DRAWN - AYW	REVISED -
PLOT DATE = 11/13/2020	CHECKED -	REVISED -
	DATE -	REVISED -

STATE OF ILLINOIS
DEPARTMENT OF TRANSPORTATION

F.I.O - E Abut., 1986 RECONSTRUCTION
SN 082 - 0034

SCALE: SHEET 11 OF 15 SHEETS STA. TO STA.

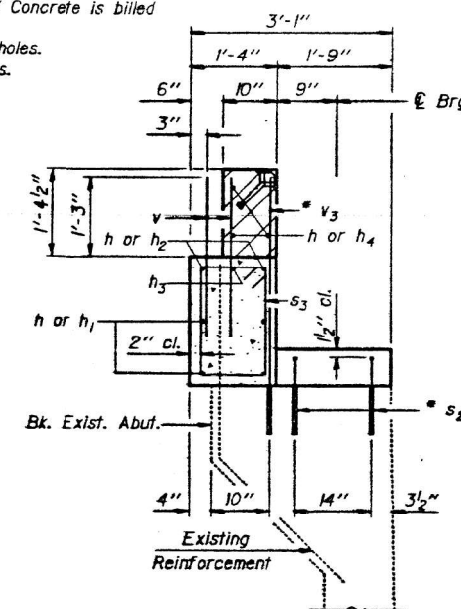
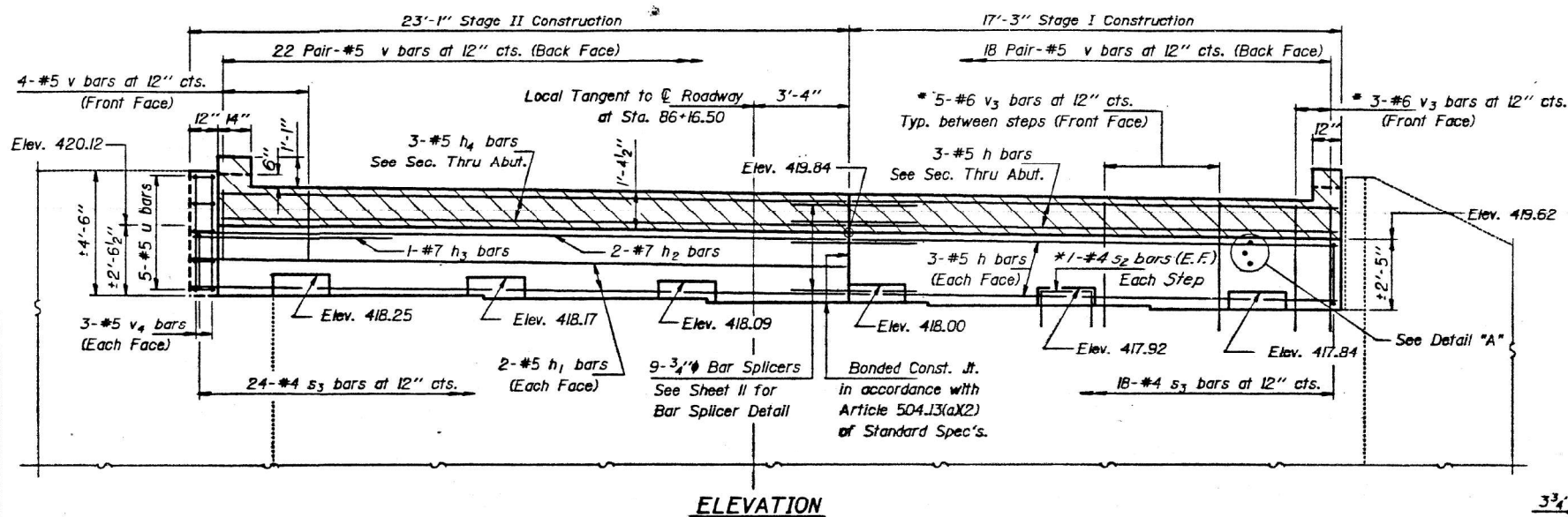
F.A.U. RTE.	SECTION	COUNTY	TOTAL SHEETS	SHEET NO.
9166	33-2BR-2	ST CLAIR	33	29
CONTRACT NO. 76N39				
ILLINOIS FED. AID PROJECT				

MODEL: 02/20/2020 7:59:39 AM FILE NAME: p:\planning\constr\illinois\gov\p\w\DOT\Documents\IBDOT Office\Drawings\Project\082-0034-76N39.dwg

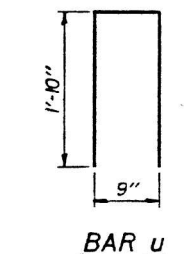
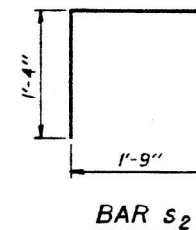
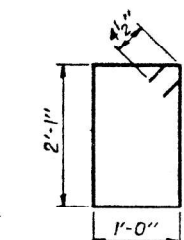
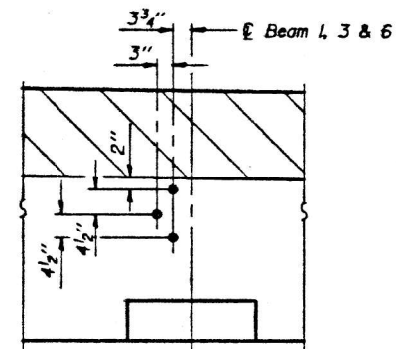
STATE OF ILLINOIS
DEPARTMENT OF TRANSPORTATION

PROJECT NO.	SECTION	SHEET NO.	TOTAL SHEETS
33-2BR-1	ST. CLAIR	16	15
SHEET NO. 10			11 SHEETS

Notes: All edges shall have standard $\frac{3}{4}$ " chamfers.
Hatched area to be poured after superstructure forms have been removed. Quantity of Class X Concrete is billed with Superstructure on Sheet 5.
* Epoxy grout v_3 bars in $1' \times 9''$ holes.
Epoxy grout s_2 bars in $\frac{3}{4}'' \times 11''$ holes.
See special provisions.

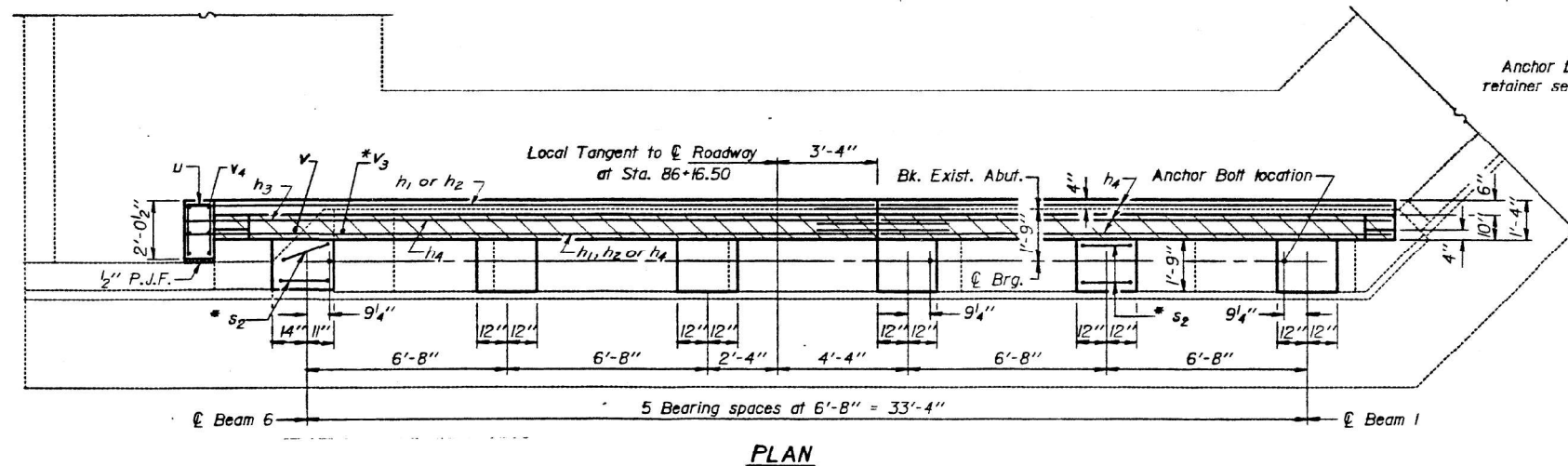


FOR INFORMATION ONLY



BILL OF MATERIAL

Bar	No.	Size	Length	Shape
h	9	#5	17'-0"	—
h_1	4	#5	22'-10"	—
h_2	2	#7	22'-10"	—
h_3	1	#7	7'-0"	—
h_4	3	#5	21'-10"	—
s_2	12	#4	4'-5"	□
s_3	42	#4	6'-11"	□
v	84	#5	2'-6"	—
v_3	28	#6	4'-5"	—
v_4	6	#5	4'-3"	—
u	5	#5	4'-5"	□
Reinforcement Bars			Lbs.	1,120
Class X Concrete			Cu. Yds.	5.7
Concrete Removal			Cu. Yds.	5



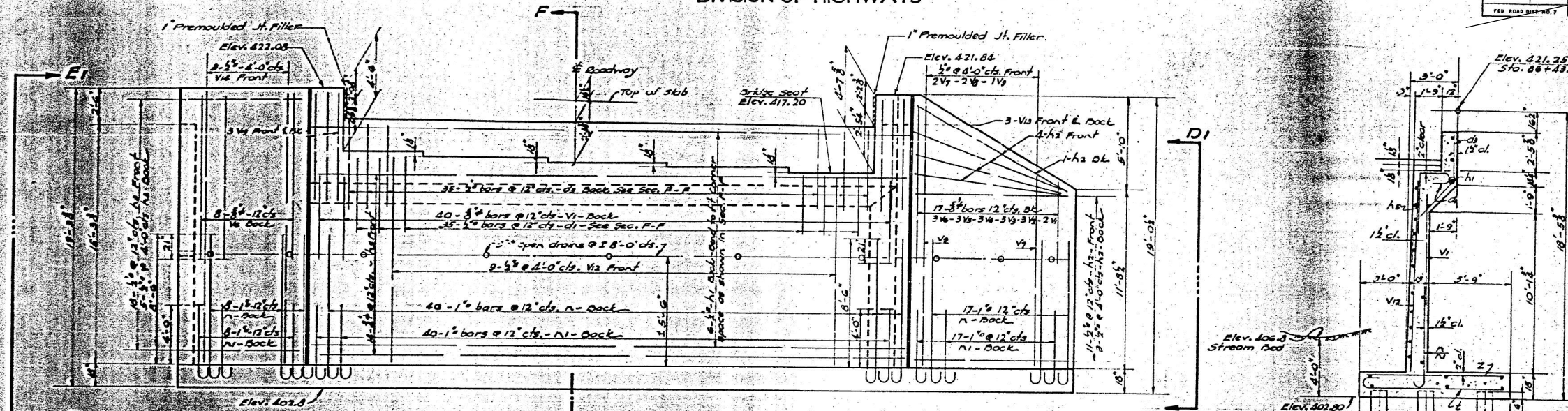
DESIGNED Mark Maday
CHECKED R. P. Summer
DRAWN R. P. Summer
CHECKED R. P. Summer

March 19 1985
EXAMINED James J. Robinson
PASSED James J. Robinson
APPROVED James J. Robinson
DIRECTOR OF HIGHWAYS

WEST ABUTMENT
F.A.U. RT. 9166 SEC. 33-IBR-1
ST. CLAIR COUNTY
STA. 86+16.50

MODEL: 02/20/2014 7:51:35-017
FILE NAME: p:\planning\concrete\illinois\gov\p\w\DOT\Documents\IBDOT Office\Drawings\Projects\087639\30\Drawings\Structures\0820034-76N39.dwg

USER NAME = vlnsonay	DESIGNED - AYW	REVISED -	F.I.O - W. ABUT. (1986 RECONSTRUCTION)	F.A.U. RTE. = 9166	SECTION = 33-2BR-2	COUNTY = ST CLAIR	TOTAL SHEETS = 33	SHEET NO. = 30
PLOT SCALE = 0:2.0000 " = 1'	DRAWN - AYW	REVISED -	SN 082 - 0034	CONTRACT NO. 76N39		ILLINOIS FED. AID PROJECT		
PLOT DATE = 11/13/2020	CHECKED -	REVISED -	STATE OF ILLINOIS DEPARTMENT OF TRANSPORTATION	SCALE:	SHEET 12 OF 15 SHEETS	STA.	TO STA.	



ELEVATION OF WEST ABUTMENT

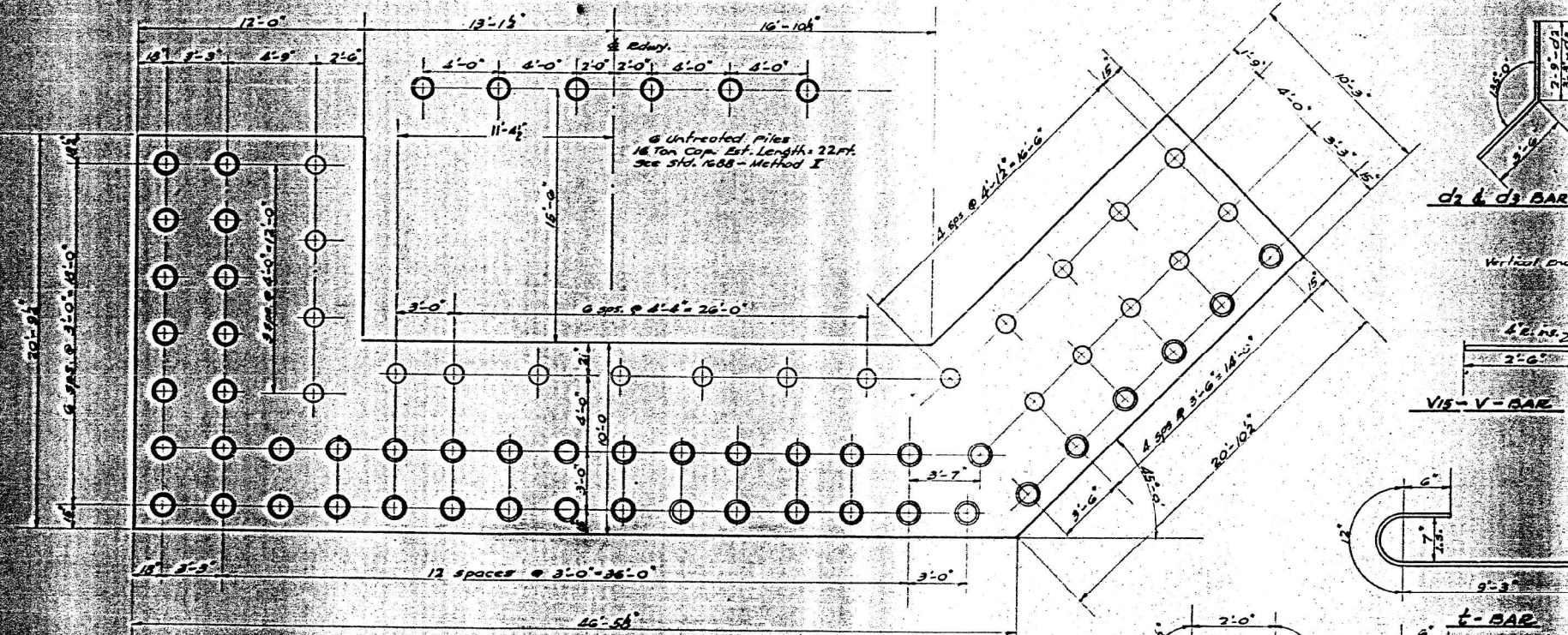
For View E-E see E-E on sheet 3 which is Opp. Hand.

For View D-D see D-D on sheet 3 which is Opp. Hand

SECTION F-F @ ROADWAY

BILL OF MATERIAL - SUBSTRUCTURE TOTAL FOR TWO ABUTS.

Bar No	Size	Length	Bar No	Size	Length
d1	70	5'-0"	v2	18	5'
d2	35	6'-3"	v3	24	6'-3"
d3	35	6'-9"	v4	6	17'-0"
h1	24	20'-6"	v5	28	11'-3"
h2	33	16'-9"	v6	130	10'-9"
h3	46	8'-0"	v7	80	9'-9"
h4	42	16'-9"	v8	66	13'-0"
h5	56	20'-0"	v9	130	6'-3"
v	28	6'-9"	b	160	10'-9"
v1	84	7'-0"	b1	80	10'-0"
v2	6	7'-9"	b2	50	8'-3"
v3	6	8'-6"			
v4	6	9'-6"	w	12	16'-0"
v5	6	10'-3"	w1	24	23'-0"
v6	22	11'-0"	w2	12	20'-0"
v7	4	12'-0"	Class X Concrete Cu. Yds. 185.9		
v8	4	14'-0"	Reinforcement Bars Lbs. 28280		
v9	2	16'-6"	Unfr. Piling - 18 y. Lin. Ft. 672		
v10	28	9'-3"	Unfr. Piling - 22 y. Lin. Ft. 2288		
v11	8	15'-0"	Test Piles Each 2		



PILE PLAN WEST ABUTMENT EAST ABUTMENT OPP. HAND

- 10 Ton Piles - Est. Length = 16 ft. 21 Req'd. Ea. Abut.
- 16 Ton Piles - Est. Length = 22 ft. 46 Req'd. Ea. Abut.

STANDARD	COMPUTER	<i>M. Schick</i>	DESIGNED	<i>J. F. Smith</i>
	CHECKED	<i>C. M. Hoffman</i>	DRAWN	<i>F. Schick</i>
	DRAWN	<i>M. Schick</i>	CHECKED	<i>Smith</i>
SPECIAL	ASSEMBLED	<i>Smith</i>	APPROVED	<i>Smith</i>
	CHECKED			

FOR INFORMATION ONLY

HARDING DITCH
S.B.I. RT. 12-SEC. 33-RB
ST. CLAIR COUNTY
STA. 86 + 16.5

MODEL: 02/03/24-78139-015
FILE NAME: p:\p\illinois\gov\p\DOT\Documents\DOT Office\District 9\Project\08768139\3D\00Data\Structure\0820034-78139.dwg

USER NAME = vlnsonay
DESIGNED - AYW
DRAWN - AYW
PLOT SCALE = 0:2.0000 "/>

REVISOR -
REVISOR -
REVISOR -
REVISOR -

STATE OF ILLINOIS
DEPARTMENT OF TRANSPORTATION

F.I.O. - ABUT, 1940 CONSTRUCTION, SHEET 2
SN 082 - 0034

SCALE: SHEET 15 OF 15 SHEETS STA. TO STA.

F.A.U. RTE.	SECTION	COUNTY	TOTAL SHEETS	SHEET NO.
9166	33-2BR-2	ST CLAIR	33	33
CONTRACT NO. 76N39				
ILLINOIS FED. AID PROJECT				