

STATE OF ILLINOIS DEPARTMENT OF TRANSPORTATION PLANS FOR PROPOSED SURFACE TRANSPORTATION PROGRAM-BRIDGE BUREAU COUNTY SECTION 12-00241-00-BR F.A.S. 1246 (CH 24) OVER BRANCH OF POND CREEK PROJECT NO. S43W(369) JOB NUMBER C-93-003-21

F.A.S. RTE.	SECTION	COUNTY	TOTAL SHEETS	SHEET NO.
1246	12-00241-00-BR	BUREAU	23	1
FED. ROAD DIST. NO. 7		ILLINOIS	CONTRACT NO. 87764	

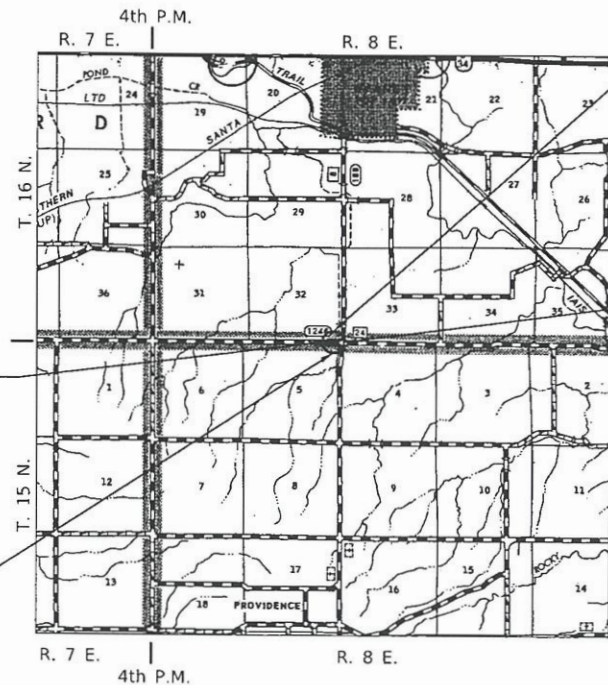
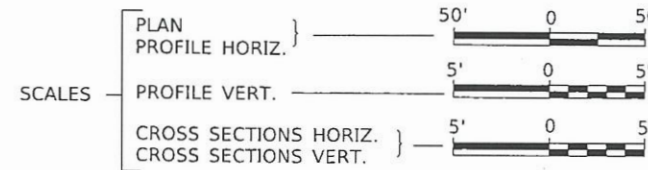
INDEX OF SHEETS

SHEET NO.	DESCRIPTION
1	COVER SHEET
2	GENERAL NOTES, TYPICAL SECTIONS, PAVEMENT DESIGN INFORMATION, DETAILS
3	SUMMARY OF QUANTITIES, SCHEDULES OF QUANTITIES
4	TRAFFIC CONTROL PLAN
5	EROSION CONTROL PLAN
6	PLAN AND PROFILE
7-18	STRUCTURE PLANS
19-23	CROSS SECTIONS



HIGHWAY STANDARDS (INCLUDED IN PROPOSAL)

- 000001-08 STANDARD SYMBOLS, ABBREVIATIONS AND PATTERNS
- 280001-07 TEMPORARY EROSION CONTROL SYSTEMS
- 515001-04 NAME PLATE FOR BRIDGES
- 630301-09 SHOULDER WIDENING FOR TYPE 1 (SPECIAL) GUARDRAIL TERMINALS
- 701001-02 OFF-RD OPERATIONS, 2L, 2W, MORE THAN 15' (4.5m) AWAY
- 701006-05 OFF-RD OPERATIONS, 2L, 2W, 15' (4.5m) TO 24" (600mm) FROM PAVEMENT EDGE
- 701011-04 OFF-RD MOVING OPERATIONS, 2L, 2W, DAY ONLY
- 701301-04 LANE CLOSURE, 2L, 2W, SHORT TIME OPERATIONS
- 701901-08 TRAFFIC CONTROL DEVICES
- 725001-01 OBJECT AND TERMINAL MARKERS
- BLR 21-9 TYPICAL APPLICATION OF TRAFFIC CONTROL DEVICES FOR CONSTRUCTION ON RURAL LOCAL HIGHWAYS
- BLR 26-3 STEEL PLATE BEAM GUARDRAIL 29" (731mm) HEIGHT
- BLR 27-1 TRAFFIC BARRIER TERMINAL TYPE 5A



PROPOSED STRUCTURE SN 006-3104
SINGLE SPAN 21" PPC DECK BEAM SUPERSTRUCTURE ON CONCRETE SPILL-THRU PILE BENT ABUTMENTS, 48'-0" BK TO BK, AND 30'-0" O TO O DECK, NO SKEW

EXISTING STRUCTURE NO. 006-3100
THREE SPAN PRECAST NELSON BEAM BRIDGE ON TIMBER PILE BENT PIERS AND TIMBER PILE BENT ABUTMENTS, ALL WITH CONCRETE CAPS, ±52'-0" BK TO BK, AND 30'-0" O TO O DECK, NO SKEW. (TO BE REMOVED)

UTILITY COMPANIES

AMEREN ILLINOIS
LASALLE, ILLINOIS

FRONTIER COMMUNICATIONS
ROSEVILLE, ILLINOIS

AT&T
OAK BROOK, ILLINOIS

J.U.L.I.E.
JOINT UTILITY LOCATION INFORMATION FOR EXCAVATION
1-800-892-0123
OR 811

CONTRACT NO. 87764

NET LENGTH OF PROJECT = 309.68 FEET = 0.059 MILES
DESIGN CLASSIFICATION: MAJOR COLLECTOR (NON-URBAN)
DESIGN ADT: 330 (2021)
DESIGN SPEED: 40 MPH

Hutchison Engineering, Inc.
JACKSONVILLE-SHOREWOOD
PEORIA-QUAD CITIES

2021 JOB#3547

DATE: 2/15/21
STEPHAN T. MIERZWA
REGISTERED PROFESSIONAL ENGINEER OF ILLINOIS
EXP: 11/30/2021
SIGNATURE
ENGINEER'S SEAL

PLANS DESIGNED IN ACCORDANCE WITH BUREAU OF LOCAL ROADS AND STREETS MANUAL GUIDELINES FOR TWO LANE RURAL COLLECTORS - RECONSTRUCTION

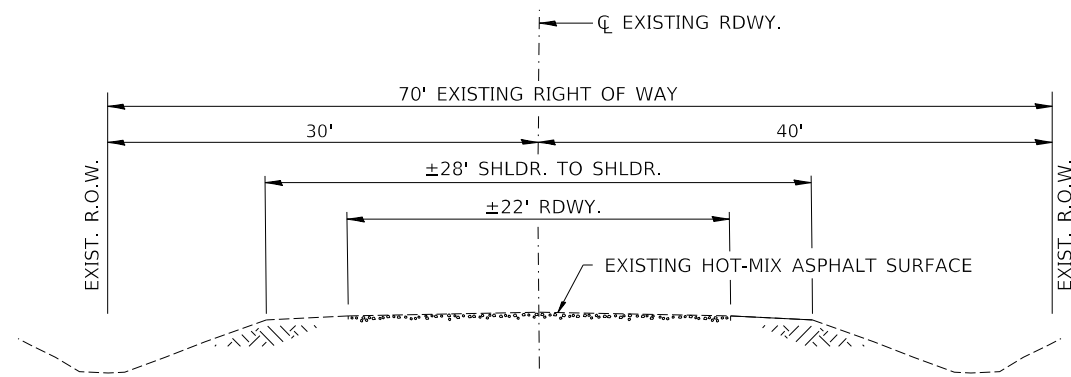
APPROVED *February 19th* 2021
BUREAU COUNTY ENGINEER

PASSED *FEBRUARY 22* 2021
DISTRICT THREE ENGINEER OF LOCAL ROADS & STREETS

Released For Bid Based on Limited Review *FEBRUARY 22* 2021
REGION TWO ENGINEER
STATE OF ILLINOIS
DEPARTMENT OF TRANSPORTATION

HOT-MIX ASPHALT MIXTURE REQUIREMENTS

	HMA SURFACE
LOCATION(S):	ENTIRE PROJECT
PG GRADE:	PG 64-22
DESIGN AIR VOIDS:	4.0% @ N50
MIXTURE COMPOSITION:	IL-9.5
FRICTION AGGREGATE:	MIXTURE C
MIXTURE WEIGHT:	112#/SQ YD/IN
QUALITY MANAGEMENT PROGRAM:	QC/QA
SUBLOT SIZE:	N/A
DENSITY TEST METHOD:	LR 1030

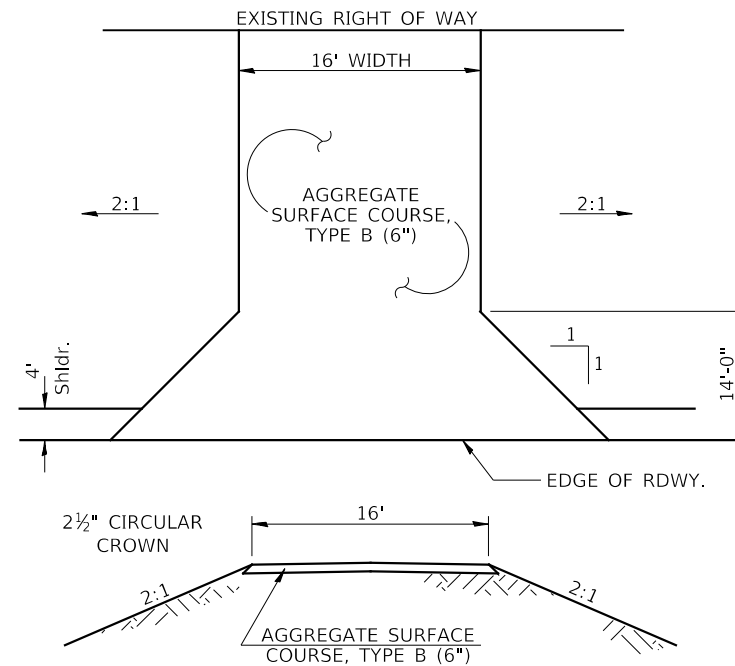


EXISTING TYPICAL SECTION

(LOOKING EAST)

COMMITMENTS

THERE ARE NO COMMITMENTS FOR THIS PROJECT.



PROPOSED FIELD ENTRANCES

STA 18+80 RT
STA 19+30 LT
STA 20+84 RT

GENERAL NOTES

ANY ADDITIONAL REMOVAL OF EXISTING HOT-MIX ASPHALT SURFACE AND GRAVEL OR CRUSHED STONE BASE COURSE WHICH MAY BE NECESSARY FOR THE CONSTRUCTION OF THE NEW BRIDGE SHALL BE REMOVED AS STRUCTURE EXCAVATION AND NO COMPENSATION WILL BE ALLOWED FOR ADDITIONAL LABOR OR EQUIPMENT REQUIRED.

ALL WASTE OR UNDESIRABLE MATERIAL AS IDENTIFIED BY THE ENGINEER SHALL BE DISPOSED OF OUTSIDE THE LIMITS OF THE RIGHT OF WAY AT THE CONTRACTOR'S EXPENSE.

ALL EXISTING PRIVATELY OWNED UTILITIES REQUIRING ADJUSTMENT WILL BE MADE BY THE UTILITY COMPANY INVOLVED. WHERE NO PROVISIONS HAVE BEEN MADE FOR ADJUSTMENTS ON THE PLANS, NO ADDITIONAL COMPENSATION WILL BE ALLOWED DUE TO DELAYS OR INCONVENIENCES CAUSED BY THE SAID UTILITY ADJUSTMENTS.

THE PROFILE GRADE ELEVATIONS SHOWN ON THE PLAN AND PROFILE SHEETS AND IN THE STATION CROSS SECTIONS ARE TO THE TOP OF THE FINISHED SURFACE.

ALL EXISTING DRAINAGE STRUCTURES NOT BEING REMOVED BY THE CONTRACTOR THAT ARE DAMAGED DURING CONSTRUCTION SHALL BE REPLACED AT THE CONTRACTOR'S EXPENSE.

ANY REFERENCE TO STANDARDS THROUGHOUT THE PLANS SHALL BE INTERPRETED TO BE THE LATEST STANDARDS OF THE ILLINOIS DEPARTMENT OF TRANSPORTATION.

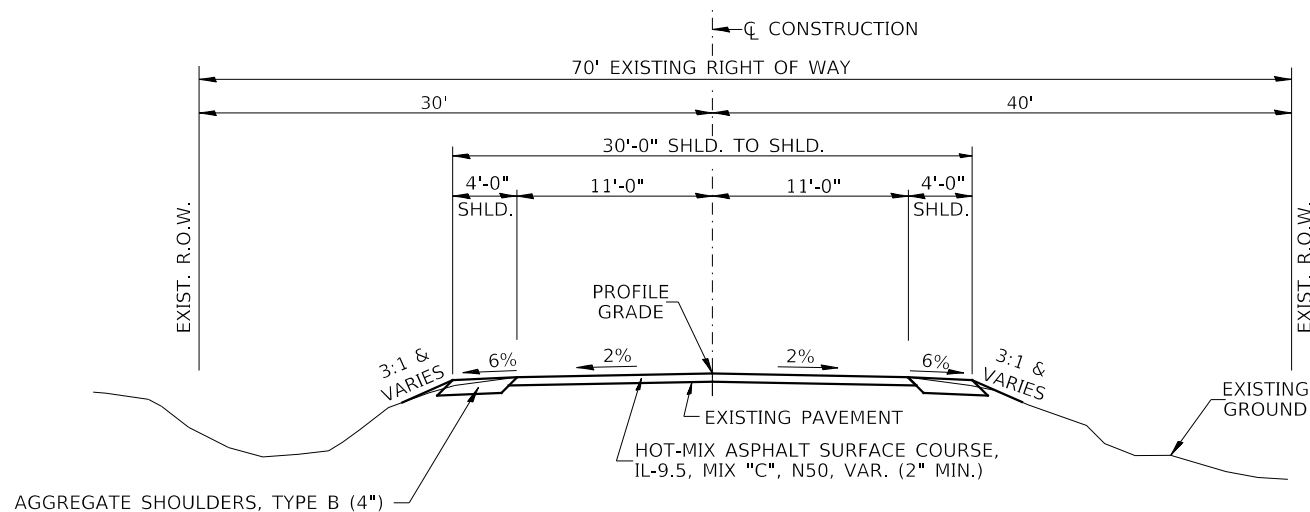
THE LOCATION OF UNDERGROUND UTILITIES SHOWN ON THE PLANS REPRESENTS THE BEST KNOWLEDGE OF THE COUNTY. IT SHALL BE THE CONTRACTOR'S RESPONSIBILITY TO VERIFY LOCATIONS OF UNDERGROUND INSTALLATIONS BEFORE STARTING CONSTRUCTION OPERATIONS. THE CONTRACTOR SHALL INDEMNIFY THE COUNTY, ITS OFFICERS AND EMPLOYEES AGAINST ALL CLAIMS DUE TO DAMAGE TO CORPORATE OR PRIVATE PROPERTY RESULTING FROM HIS CONSTRUCTION OPERATIONS AS DESCRIBED IN ARTICLES 107.20 AND 107.26 OF THE STANDARD SPECIFICATIONS.

THE CONTRACTOR MAY BE REQUIRED TO CONDUCT SOME OF HIS GRADING AND TRENCHING OPERATIONS AROUND TRANSMISSION POLES AND UNDER TRANSMISSION LINES. THE ADDED COST OF SO DOING SHALL BE INCLUDED IN THE COST OF EARTH EXCAVATION.

WHERE SECTION OR SUBSECTION MONUMENTS ARE ENCOUNTERED, THE ENGINEER SHALL BE NOTIFIED BEFORE SUCH MONUMENTS ARE REMOVED. THE CONTRACTOR SHALL PROTECT AND PRESERVE PROPERTY MARKERS UNTIL THE OWNER, AN AUTHORIZED SURVEYOR, OR AGENT, HAS WITNESSED OR OTHERWISE REFERENCED THEIR LOCATION.

THE FINAL SURFACE OF ALL DISTURBED/EMBANKMENT AREAS SHALL BE SEEDED. THE TOP 4 INCHES OF THE SEEDED AREAS SHALL BE COHESIVE VEGETATION SUSTAINING SOIL SUBJECT TO THE APPROVAL OF THE ENGINEER. THE COST OF SHAPING THE SLOPES AND PROVIDING VEGETATION SUSTAINING SOIL WILL NOT BE PAID FOR SEPARATELY BUT SHALL BE INCLUDED IN THE COST OF EARTH EXCAVATION. TOPSOIL MAY BE STRIPPED AND STOCKPILED FROM THE SITE OR HAULED IN FROM AN ALTERNATE LOCATION AS APPROVED BY THE ENGINEER.

ALL ELEVATIONS SHOWN REFER TO U.S.G.S. MEAN SEA LEVEL DATUM.



PROPOSED TYPICAL SECTION

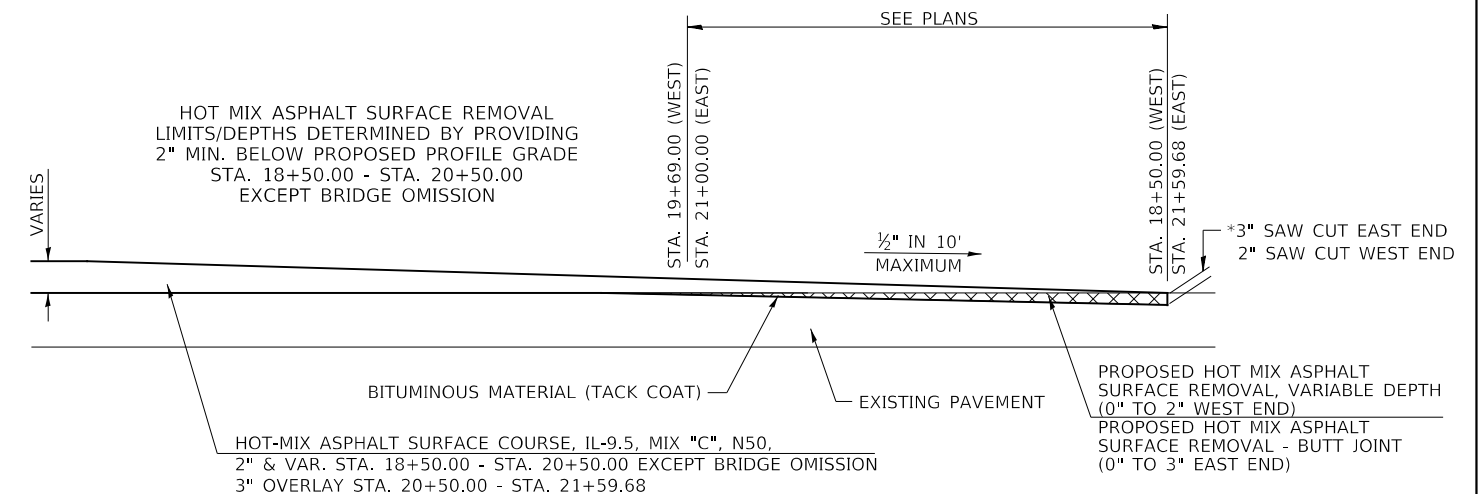
(LOOKING EAST)

STA. 18+50.00 TO STA. 19+76.00
STA. 20+24.00 TO STA. 21+59.68

EXCEPT TRANSITIONS

BRIDGE OMISSION
STA. 19+76.00 TO STA. 20+24.00

CONSTRUCT GUARDRAIL SHOULDER WIDENING IN ACCORDANCE WITH STD 630301



PAVEMENT REMOVAL DETAIL

*COST INCLUDED IN SURFACE REMOVAL.

FILE NAME =	USER NAME = SMierzwa	DESIGNED - S.T.M.	REVISED -
V:\3547 - CH 24 over Branch of Pond Creek (Bureau)\Updated Plans - December 2020\3547\001.dgn		DRAWN - J.P.S.	REVISED -
		CHECKED - S.T.M.	REVISED -
		DATE - 2/14/2021	REVISED -

**BUREAU COUNTY
COUNTY HIGHWAY 24 OVER
BRANCH OF POND CREEK**

**GENERAL NOTES, TYPICAL SECTIONS,
PAVEMENT DESIGN INFORMATION, DETAILS**

SCALE: NONE SHEET NO. 1 OF 1 SHEETS STA. 18+50.00 TO STA. 21+59.68

F.A.S. RTE.	SECTION	COUNTY	TOTAL SHEETS	SHEET NO.
1246	12-00241-00-BR	BUREAU	23	2
CONTRACT NO. 87764				
FED. ROAD DIST. NO. 7 ILLINOIS		FED. AID PROJECT NO. 543W(369)		

SUMMARY OF QUANTITIES				
	CODE NO.	ITEM	UNIT	QUANTITY
	SP 20200100	EARTH EXCAVATION	CU YD	35
	20300100	CHANNEL EXCAVATION	CU YD	50
	SP 20700220	POROUS GRANULAR EMBANKMENT	CU YD	29.6
	BDE 25100630	EROSION CONTROL BLANKET	SQ YD	968
	BDE 28000400	PERIMETER EROSION BARRIER	FOOT	580
	40200800	AGGREGATE SURFACE COURSE, TYPE B	TON	45
	40600290	BITUMINOUS MATERIALS (TACK COAT)	POUND	363
	40600982	HOT-MIX ASPHALT SURFACE REMOVAL - BUTT JOINT	SQ YD	295
	BDE 40604050	HOT-MIX ASPHALT SURFACE COURSE, 1L-9.5, MIX "C", N50	TON	134
	48101200	AGGREGATE SHOULDERS, TYPE B	TON	34
	SP 50100100	REMOVAL OF EXISTING STRUCTURES	EACH	1
	BDE 50300225	CONCRETE STRUCTURES	CU YD	24.3
	BDE 50300280	CONCRETE ENCASEMENT	CU YD	2.6
	50400405	PRECAST PRESTRESSED CONCRETE DECK BEAMS (21" DEPTH)	SQ FT	1,385
	50800105	REINFORCEMENT BARS	POUND	2,760
	51200957	FURNISHING METAL SHELL PILES 12"X0.250"	FOOT	280
	51202305	DRIVING PILES	FOOT	280
	51203200	TEST PILE METAL SHELLS	EACH	2
	51500100	NAME PLATES	EACH	1
	58100200	WATERPROOFING MEMBRANE SYSTEM	SQ YD	160
	58300100	PORTLAND CEMENT MORTAR FAIRING COURSE	FOOT	125
Δ	BDE 63100075	TRAFFIC BARRIER TERMINAL, TYPE 5A	EACH	2
Δ	BDE 63100167	TRAFFIC BARRIER TERMINAL, TYPE 1 (SPECIAL) TANGENT	EACH	2
	67100100	MOBILIZATION	L SUM	1
Δ	72501000	TERMINAL MARKER - DIRECT APPLIED	EACH	4
	SP X2501100	SEEDING, CLASS 3 (SPECIAL)	ACRE	0.2
	SP X2810208	STONE RIPRAP, CLASS A4 (SPECIAL)	TON	300
	SP X4401198	HOT-MIX ASPHALT SURFACE REMOVAL, VARIABLE DEPTH	SQ YD	291
	SP X7010216	TRAFFIC CONTROL AND PROTECTION, (SPECIAL)	L SUM	1
Δ	BDE XX006199	STEEL BRIDGE RAIL, TYPE SM (SPECIAL)	FOOT	96
	CS Z0013798	CONSTRUCTION LAYOUT	L SUM	1

SP: SEE SPECIAL PROVISIONS
 BDE: SEE BUREAU OF DESIGN AND ENVIRONMENT CHECK SHEET
 CS: SEE CHECK SHEET FOR RECURRING SPECIAL PROVISIONS
 NOTE: PAVEMENT MARKING DONE BY OTHERS
 Δ SPECIALTY ITEMS

CONSTRUCTION CODE TYPE: 0010
 BRIDGE CODE TYPE: X080

HOT-MIX ASPHALT SURFACE REMOVAL, VARIABLE DEPTH			
STATION TO STATION	WIDTH	LENGTH	SQ YD
18+50.00 - 19+69.00	22.00'	119.00'	291
TOTAL			291

HOT-MIX ASPHALT SURFACE REMOVAL - BUTT JOINT			
STATION TO STATION	WIDTH	LENGTH	SQ YD
21+00.00 - 21+59.68	VARIES	59.68'	295
TOTAL			295

AGGREGATE SHOULDERS, TYPE B				
STATION TO STATION	SIDE	WIDTH	LENGTH	TON
18+50.00 - 19+00.00	LEFT	3.09' AVG.	50.00'	4
18+50.00 - 18+59.00	RIGHT	1.68' AVG.	9.00'	1
19+00.00 - 19+10.00	LEFT	4.00'	10.00'	1
19+00.00 - 19+76.00	RIGHT	4.00'	76.00'	7
19+50.00 - 19+76.00	LEFT	4.00'	26.00'	2
20+24.00 - 21+00.00	LEFT	4.00'	76.00'	7
20+24.00 - 20+64.00	RIGHT	4.00'	40.00'	4
21+00.00 - 21+63.39	LEFT	2.23' AVG.	83.60'	4
21+04.87 - 21+52.78	RIGHT	2.47' AVG.	66.26'	4
TOTAL				34

EARTHWORK SUMMARY					
STATION TO STATION	EARTH EXCAVATION	CHANNEL EXCAVATION	STRUCTURE EXCAVATION	FILL	WASTE (SHORTAGE)
	CU YD	CU YD	CU YD	CU YD	CU YD
RDWY 18+50.00 - 19+76.00	19			4	10
RDWY 20+24.00 - 21+59.68	14			17	(7)
CHANNEL		50			
STRUCTURE			95		
TOTAL	33	50	95	21	3
USE	35	50	*95	-	3

*STRUCTURE EXCAVATION SHALL BE COMPLETED IN ACCORDANCE WITH SECTION 502 OF THE STANDARD SPECIFICATIONS. INDIVIDUAL PAYMENT FOR STRUCTURE EXCAVATION WILL NOT BE MADE, BUT SHALL BE IN ACCORDANCE WITH SECTION 502.13.

PERIMETER EROSION BARRIER		
STATION TO STATION	SIDE	FOOT
18+50 - 19+76	LEFT	130
18+50 - 19+76	RIGHT	130
20+24 - 21+62	LEFT	165
20+24 - 21+51	RIGHT	155
TOTAL		580




EROSION CONTROL BLANKET				
STATION TO STATION	SIDE	WIDTH	LENGTH	AREA (SQ YD)
18+50 - 19+22	LEFT	VARIES	72'	120
18+50 - 18+73	RIGHT	VARIES	23'	58
18+88 - 19+76	RIGHT	VARIES	88'	239
19+38 - 19+76	LEFT	VARIES	38'	58
20+24 - 21+43	LEFT	VARIES	119'	174
20+24 - 20+79	RIGHT	VARIES	55'	143
20+88 - 21+51	RIGHT	VARIES	63'	145
21+44 - 21+62	LEFT	VARIES	18'	31
TOTAL				968

AGGREGATE SURFACE COURSE, TYPE B				
STATION TO STATION	THICKNESS	WIDTH	LENGTH	TON
ENTRANCE - 18+80 RT	0.50'	16' & VAR.	14.00'	15
ENTRANCE - 19+30 LT	0.50'	16' & VAR.	14.00'	15
ENTRANCE - 20+84 RT	0.50'	16' & VAR.	14.00'	15
TOTAL				45

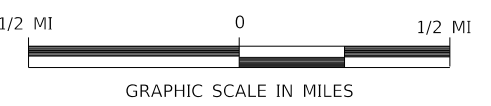
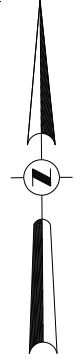
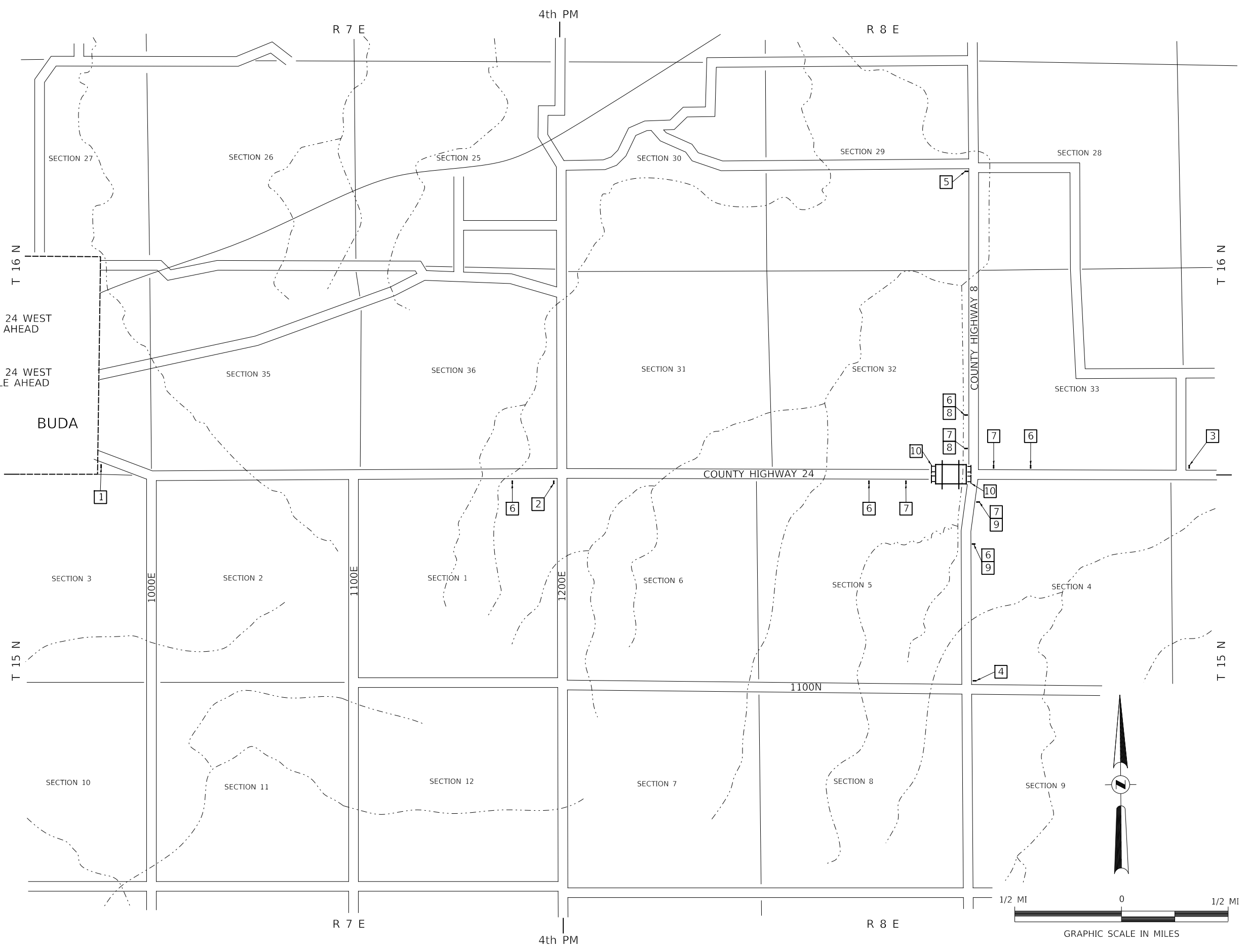
PAVEMENT SCHEDULE					
STATION TO STATION	WIDTH	THICKNESS	LENGTH	BITUMINOUS MATERIALS (TACK COAT)	HOT-MIX ASPHALT SURFACE CSE
				0.05 LBS/SQ FT	112#/SQ YD/IN
18+50.00 - 19+76.00	22.34' AVG.	---	126.00'	141	
20+24.00 - 20+50.00	22.48' AVG.	---	26.00'	29	
20+50.00 - 21+00.00	23.32' AVG.	---	50.00'	58	
21+00.00 - 21+59.68	VARIES	---	59.68'	135	
18+50.00 - 19+76.00	22.17' AVG.	0.17' AVG.	126.00'		35
BRIDGE DECK	30.00'	0.15' AVG.	48.00'		17
20+24.00 - 20+50.00	22.24' AVG.	0.24' AVG.	26.00'		10
20+50.00 - 21+00.00	23.16' AVG.	0.25'	50.00'		22
21+00.00 - 21+59.68	VARIES	0.25'	59.68'		50
TOTAL				363	134

TRAFFIC BARRIER TERMINAL, TYPE 5A		
STATION TO STATION	SIDE	EACH
19+62.75 - 19+76.00	RIGHT	1
20+24.00 - 20+37.25	LEFT	1
TOTAL		2

TRAFFIC BARRIER TERMINAL, TYPE 1 (SPECIAL) TANGENT		
STATION TO STATION	SIDE	EACH
19+12.75 - 19+62.75	RIGHT	1
20+37.25 - 20+87.25	LEFT	1
TOTAL		2

- 1 ROAD CLOSED
4 1/2 MILES AHEAD
LOCAL TRAFFIC ONLY
R11-3 ROAD CLOSED
4 1/2 MILES AHEAD
LOCAL TRAFFIC ONLY
- 2 ROAD CLOSED
2 MILES AHEAD
LOCAL TRAFFIC ONLY
R11-3 ROAD CLOSED
2 MILES AHEAD
LOCAL TRAFFIC ONLY
- 3 ROAD CLOSED
1 MILE AHEAD
LOCAL TRAFFIC ONLY
R11-3 ROAD CLOSED
1 MILE AHEAD
LOCAL TRAFFIC ONLY
- 4 COUNTY HIGHWAY 24 WEST
CLOSED 1 MILE AHEAD
M3-1 COUNTY HIGHWAY 24 WEST
CLOSED 1 MILE AHEAD
- 5 COUNTY HIGHWAY 24 WEST
CLOSED 1 1/2 MILE AHEAD
M3-1 COUNTY HIGHWAY 24 WEST
CLOSED 1 1/2 MILE AHEAD
- 6 ROAD CLOSED
AHEAD
W20-3 ROAD CLOSED
AHEAD
- 7 ROAD CLOSED
500 FT
W20-3 ROAD CLOSED
500 FT
- 8  AS SHOWN
M5-1R
- 9  AS SHOWN
M5-1L
- 10  TYPE III BARRICADES

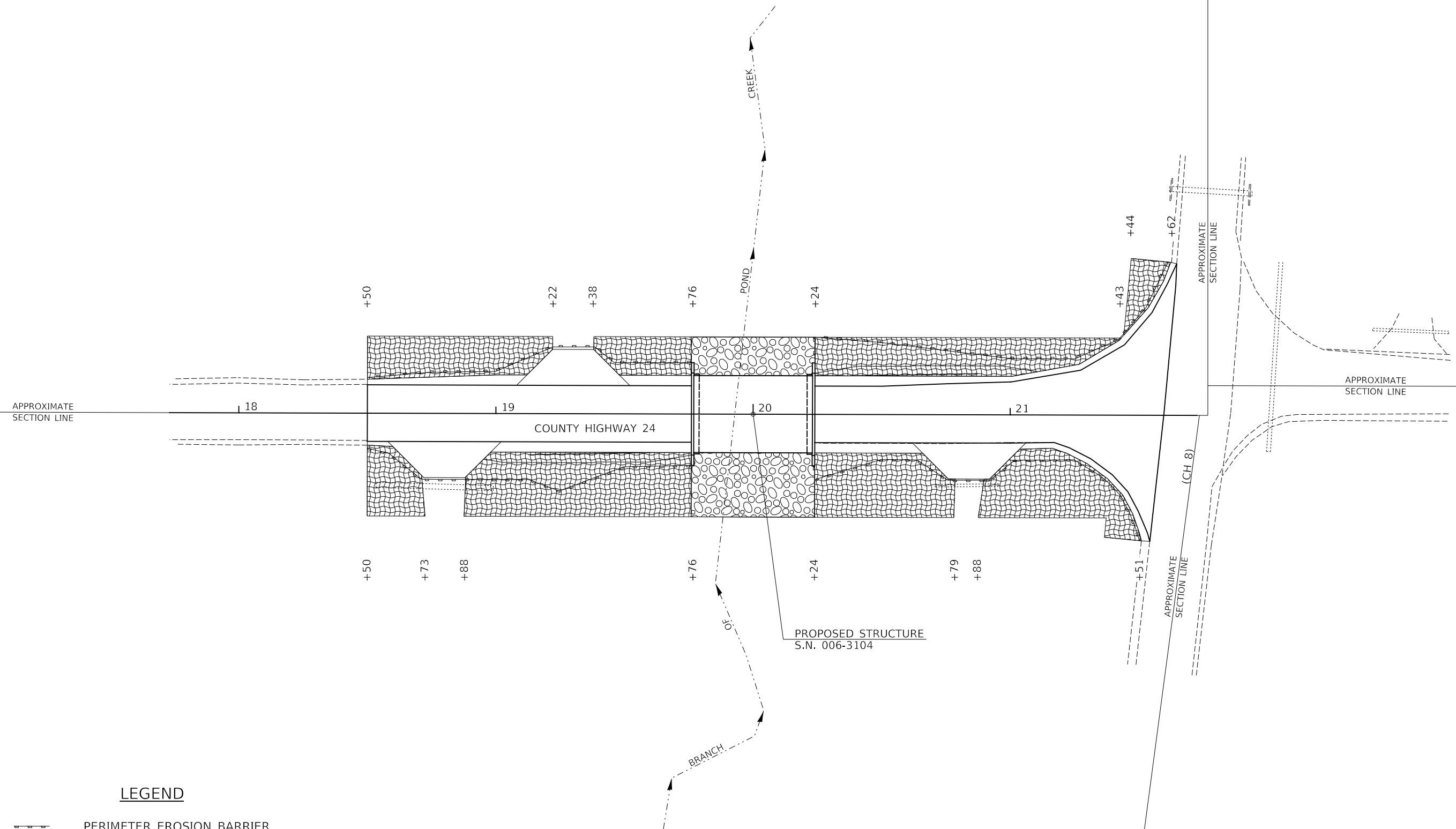
SEE STANDARD BLR 21
AND SPECIAL PROVISIONS




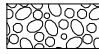
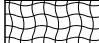
FILE NAME =	USER NAME = SMerzwa	DESIGNED - S.T.M.	REVISED -	BUREAU COUNTY COUNTY HIGHWAY 24 OVER BRANCH OF POND CREEK	TRAFFIC CONTROL PLAN			F.A.S. RTE. 1246	SECTION 12-00241-00-BR	COUNTY BUREAU	TOTAL SHEETS 23	SHEET NO. 4
V:\3547 - CH 24 over Branch of Pond Creek (Bureau)\Updated Plans - December 2020\3547h001.dgn		DRAWN - M.M.O.	REVISED -		SCALE: NONE	SHEET NO. 1 OF 1 SHEETS	STA. 18+50.00 TO STA. 21+59.68	FED. ROAD DIST. NO. 7	ILLINOIS	FED. AID PROJECT NO. 543W(369)		
		CHECKED - S.T.M.	REVISED -									
		DATE - 2/14/2021	REVISED -									

T 16 N, R 8 E, 4th PM
SECTION 32

T 16 N, R 8 E, 4th PM
SECTION 33

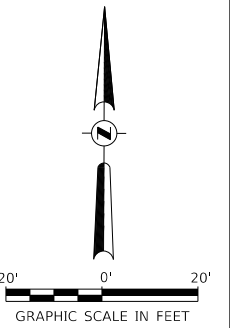


LEGEND

-  PERIMETER EROSION BARRIER
-  PROPOSED RIPRAP PLACEMENT
-  EROSION CONTROL BLANKET

T 15 N, R 8 E, 4th PM
SECTION 5

T 15 N, R 8 E, 4th PM
SECTION 4



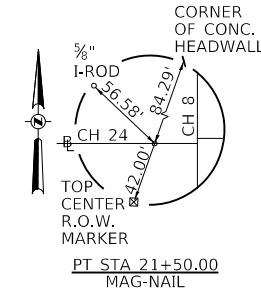
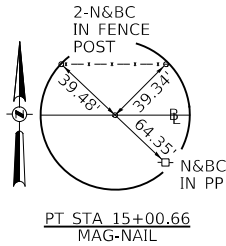
**BUREAU COUNTY
COUNTY HIGHWAY 24 OVER
BRANCH OF POND CREEK**

EROSION CONTROL PLAN

FILE NAME = V:\3547 - CH 24 over Branch of Pond Creek (Bureau)\Updated Plans - December 2020\35475001.dgn	USER NAME = SMierzwa	DESIGNED - S.T.M.	REVISED - -	SCALE: 1"=20' SHEET NO. 1 OF 1 SHEETS STA. 18+50.00 TO STA. 21+59.68	F.A.S. RTE. 1246 SECTION 12-00241-00-BR COUNTY ILLINOIS TOTAL SHEETS 23 SHEET NO. 5 CONTRACT NO. 87764 FED. AID PROJECT NO. 543W(369)
PLOT SCALE = 40.0000' / in.	CHECKED - S.T.M.	REVISED - -			
PLOT DATE = 2/14/2021	DATE - 2/14/2021	REVISED - -			

DATE	
BY	
SURVEYED	
PLOTTED	
ALIGNMENT CHECKED	
CONSTRUCTION CHECKED	
FILE NAME	
NO.	
PLAN	
NOTE BOOK	
NO.	

DATE	
BY	
SURVEYED	
PLOTTED	
GRADES CHECKED	
STRUCTURE NOTATIONS CHECKED	
FILE NAME	
NO.	
PROFILE	
NOTE BOOK	
NO.	



T 16 N, R 8 E, 4th PM
SECTION 32

T 16 N, R 8 E, 4th PM
SECTION 33

T 15 N, R 8 E, 4th PM
SECTION 5

T 15 N, R 8 E, 4th PM
SECTION 4

APPROXIMATE SECTION LINE

APPROXIMATE SECTION LINE

- LEGEND**
- TRANSITION TO OR FROM EXISTING TO PROPOSED TYPICAL PAVEMENT
 - PROPOSED HOT MIX ASPHALT SURFACE REMOVAL, VARIABLE DEPTH / BUTT JOINT
 - PROPOSED RIPRAP PLACEMENT

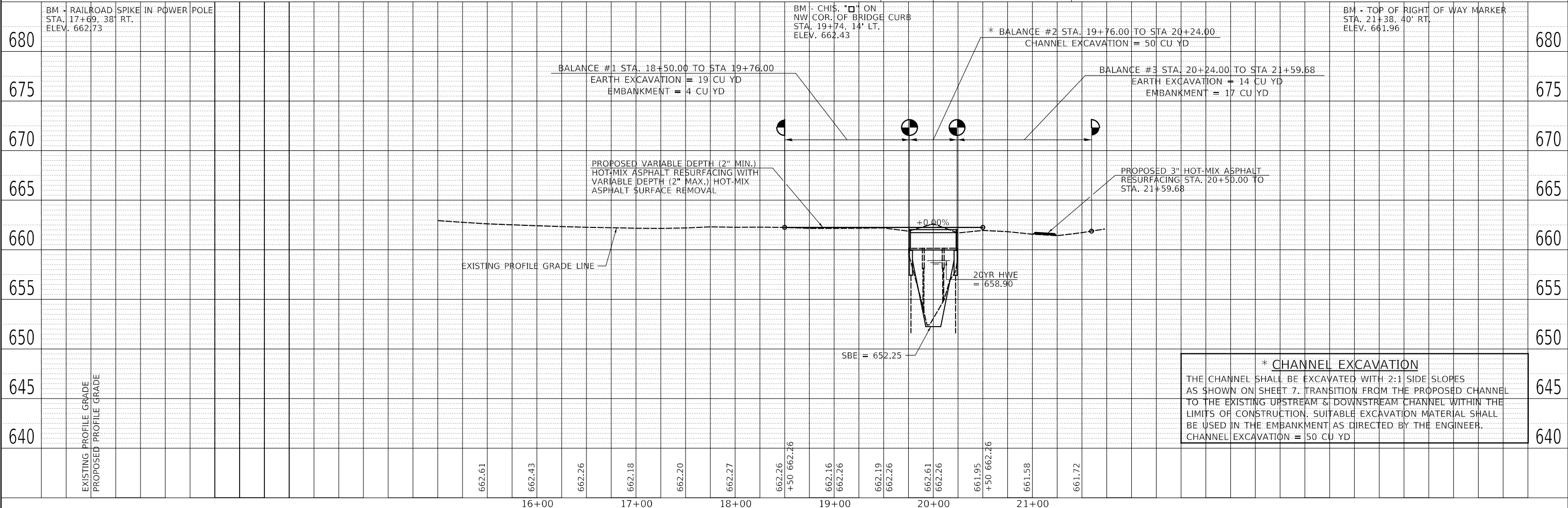
HAROLD PETERSON, ET UX

SECTION 12-00241-00-BR
BEGINS
STATION 18+50.00

SECTION 12-00241-00-BR
ENDS
STATION 21+59.68

PROPOSED TRAFFIC BARRIER TERMINALS,
TYPE 5A AND TYPE 1 (SPECIAL) TANGENT

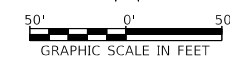
PROPOSED STRUCTURE SN 006-3104
STATION 20+00.00
SEE SHEETS #7 THRU #18 FOR DETAILS
SEE SHEET #7 FOR HYDRAULICS



*** CHANNEL EXCAVATION**
THE CHANNEL SHALL BE EXCAVATED WITH 2:1 SIDE SLOPES AS SHOWN ON SHEET 7. TRANSITION FROM THE PROPOSED CHANNEL TO THE EXISTING UPSTREAM & DOWNSTREAM CHANNEL WITHIN THE LIMITS OF CONSTRUCTION. SUITABLE EXCAVATION MATERIAL SHALL BE USED IN THE EMBANKMENT AS DIRECTED BY THE ENGINEER.
CHANNEL EXCAVATION = 50 CU YD

FILE NAME =	USER NAME = SMierzwa	DESIGNED - S.T.M.	REVISED -	BUREAU COUNTY COUNTY HIGHWAY 24 OVER BRANCH OF POND CREEK	PLAN AND PROFILE			F.A.S. RTE.	SECTION	COUNTY	TOTAL SHEETS	SHEET NO.
V:\3547 - CH 24 over Branch of Pond Creek (Bureau)\Updated Plans - December 2020\3547p001.dgn	PLOT SCALE = 100.0000' / in.	DRAWN - M.M.O.	REVISED -					1246	12-00241-00-BR	BUREAU	23	6
SMODELNAMES	PLOT DATE = 2/14/2021	CHECKED - S.T.M.	REVISED -					CONTRACT NO. 87764				
		DATE - 2/14/2021	REVISED -					FED. ROAD DIST. NO. 7 ILLINOIS FED. AID PROJECT NO. 543W(369)				

SCALE: 1"=50' SHEET 1 OF 1 SHEETS STA. 18+50.00 TO STA. 21+59.68



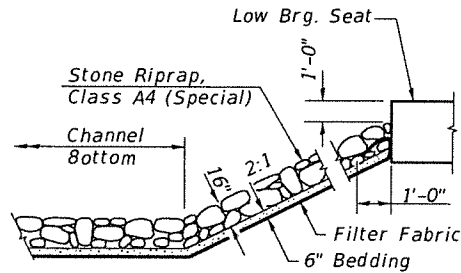
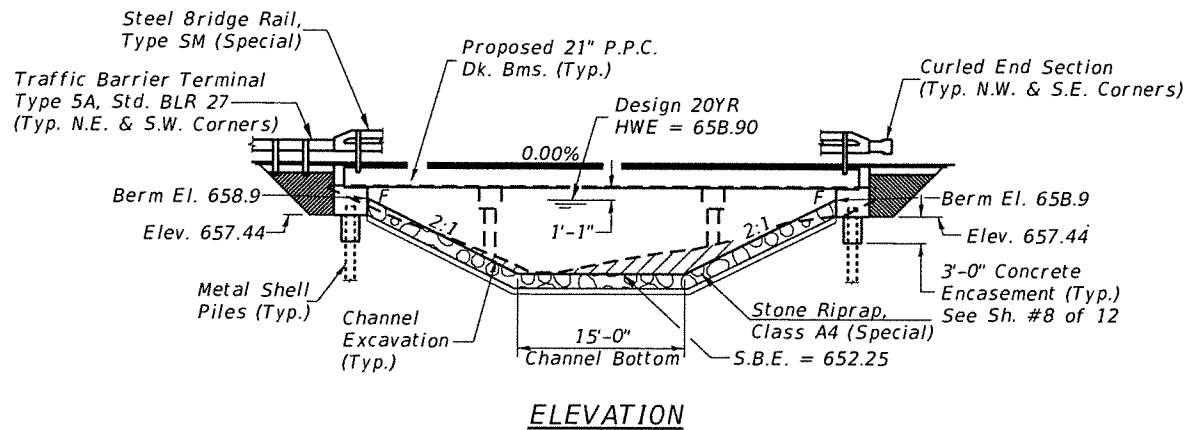
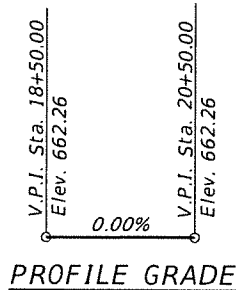
B.M.: RR Spike in Power Pole Top of Right of Way Marker
 Sta. 17+69, 38' Rt. Sta. 21+38, 40' Rt.
 Elev. 662.73 Elev. 661.96

Existing Structure:

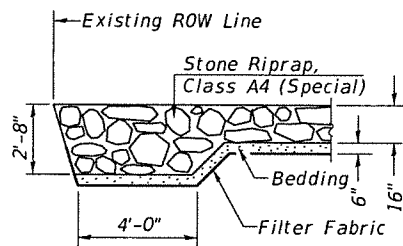
Three span precast Nelson beam bridge on timber pile bent piers with concrete caps and timber pile bent abutments with concrete caps. The structure is ±52'-0" back to back of abutments, 30'-0" out to out deck, and is not skewed. Str. No. 006-3100

Salvage: None

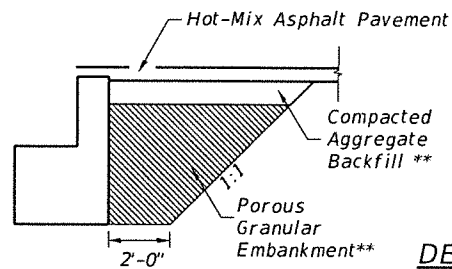
Road to be closed to traffic during construction.



STONE RIPRAP DETAIL



SECTION A-A



SECTION B-B
 **See Special Provisions

*Terminal Marker-Direct Applied to be placed on Curled End Sections in accordance with Std. 725001

DESIGN SCOUR ELEVATION TABLE

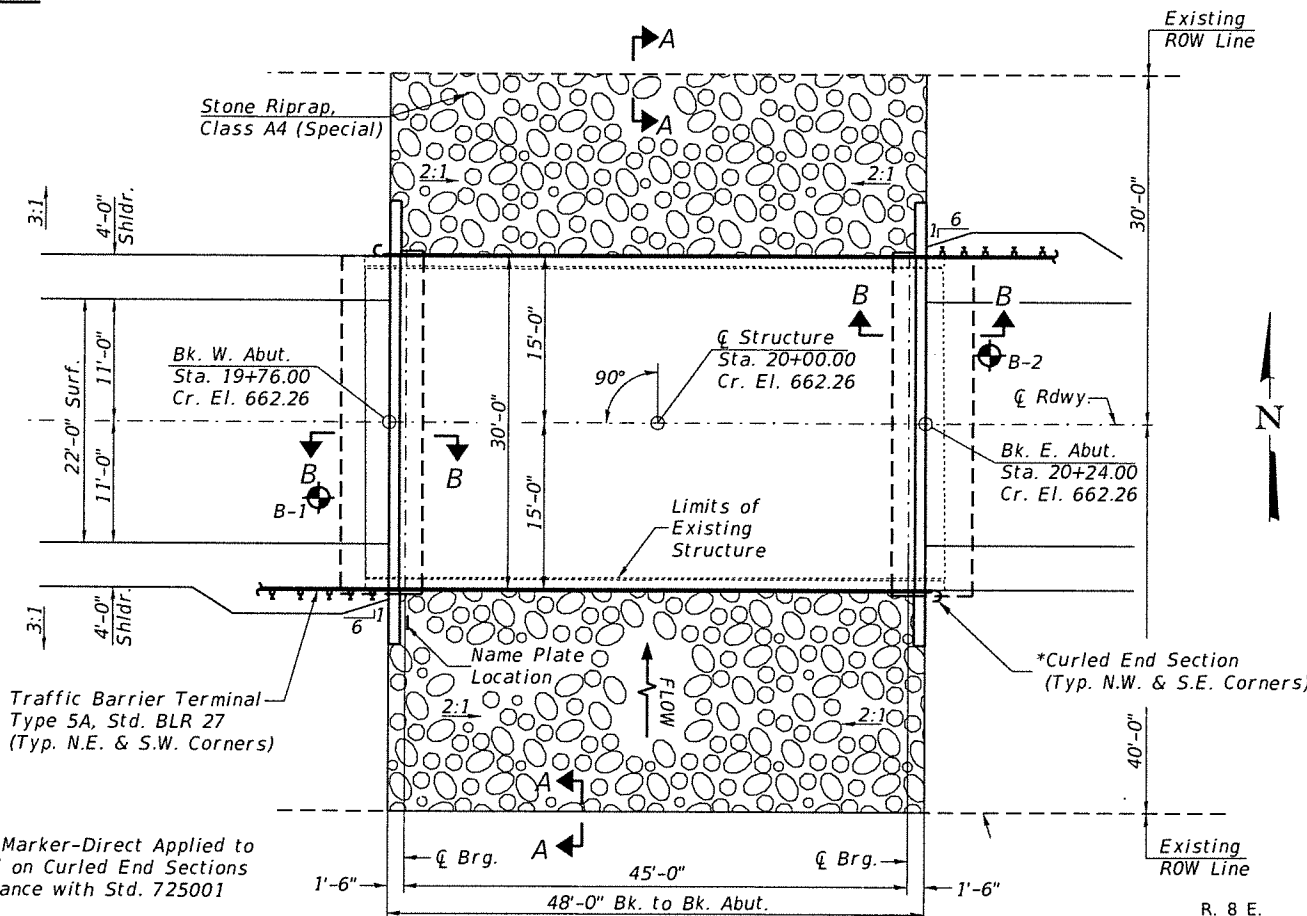
Design Scour Elevations (ft.)		Item 113
W. Abut.	E. Abut.	
0100	657.4	B
0200	657.4	
Design	657.4	
Check	657.4	

WATERWAY INFORMATION

Drainage Area = 1.53 Sq. Mi. Low Grade Elev. = 661.68 @ Sta. 21+25.00

Flood	Freq. Yr.	O.C.F.S.	Opening Sq. Ft.		Head - Ft.		Headwater El.		
			Exist.	Prop.	Exist.	Prop.	Exist.	Prop.	
Design	20	1.114	162	189	658.90	0.88	0.02	659.78	658.92
Base	100	1.680	196	222	659.68	2.15	0.38	661.83	660.06

ELEVATION



PLAN

DESIGN SPECIFICATIONS

2020 AASHTO LRFD Bridge Design Specifications, 9th Edition

DESIGN STRESSES

(FIELD UNITS) $f'_c = 3,500$ p.s.i. $f_y = 60,000$ p.s.i. (Rein.)
 (PRECAST PRESTRESSED UNITS) $f'_c = 6,000$ p.s.i. $f'_{ci} = 5,000$ p.s.i. $f'_s = 270,000$ p.s.i. ($1/2$ " Strands) $f'_{si} = 201,960$ p.s.i. ($1/2$ " Strands)

LOADING HL-93

Allow 50#/sq. ft. for future wearing surface.

GENERAL NOTES

The Contractor shall drive test piles to 110% of the nominal required bearing specified in production locations at the substructures specified or approved by the Engineer before ordering the remainder of the piles. For Soil Boring Logs, See Sheets 9-12 of 12. A Corrosion Inhibitor shall be used in the concrete for Precast Prestressed Concrete Deck Beams according to Articles 1020.05(b)(10) and 1021.07 of the Standard Specifications. Reinforcement Bars designated (E) shall be epoxy coated. Layout of the slope protection system may be varied in the field to suit ground conditions as directed by the Engineer. The top surface of the beams shall be finished according to the IDOT Manual for Fabrication of Precast Prestressed Concrete Products.

BRANCH OF POND CREEK
 BUILT 202 BY
 BUREAU COUNTY
 SEC. 12-00241-00-BR
 C.H. 24 STATION 20+00.00
 F.A. PROJ. NO. S43W(369)
 STR. NO. 006-3104 LOADING HL-93

NAME PLATE

Locate Name Plate at S.W. Wingwall Corner of Bridge (See Std. 515001)

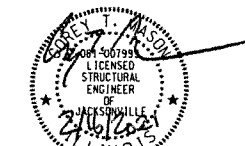
TOTAL BILL OF MATERIAL

ITEM	UNIT	SUPER	SUB	TOTAL
Channel Excavation	CU YD	—	50	50
Stone Riprap, Class A4 (Special)	TON	—	300	300
Removal of Existing Structures	EACH	—	—	1
Concrete Structures	CU YD	—	—	24.3
Precast Prestressed Concrete Deck Beams (21" Depth)	SO FT	1,385	—	1,385
Reinforcement Bars	POUND	—	—	2,760
Steel Bridge Rail, Type SM (Special)	FOOT	96	—	96
Furnishing Metal Shell Piles 12"x0.250"	FOOT	—	280	280
Driving Piles	FOOT	—	280	280
Test Pile Metal Shells	EACH	—	2	2
Concrete Encasement	CU YD	—	2.6	2.6
Name Plates	EACH	—	1	1
Waterproofing Membrane System	SO YD	160	—	160
Portland Cement Mortar Fairing Course	FOOT	125	—	125
Hot-Mix Asphalt Surface Course, 1L-9.5, Mix "C", N50	TON	17	—	17
Porous Granular Embankment	CU YD	—	29.6	29.6
Terminal Marker - Direct Applied	EACH	2	—	2

① See Special Provisions

I certify that to the best of my knowledge, information and belief, this bridge design is structurally adequate for the design loading shown on the plans. The design is an economical one for the style of structure and complies with requirements of the current AASHTO Standard Specification for Highway Bridges. This design complies with all requirements of the current AASHTO Guide Specifications for Seismic Design of highway bridges.

W. J. ...
 Illinois Structural No. 7999
 Expires 11/30/2022



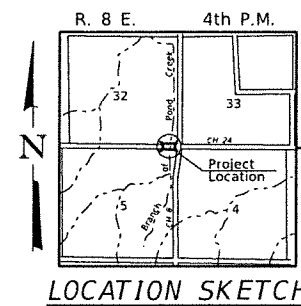
GENERAL PLAN & ELEVATION

BUREAU COUNTY

SECTION 12-00241-00-BR

COUNTY HIGHWAY 24 OVER

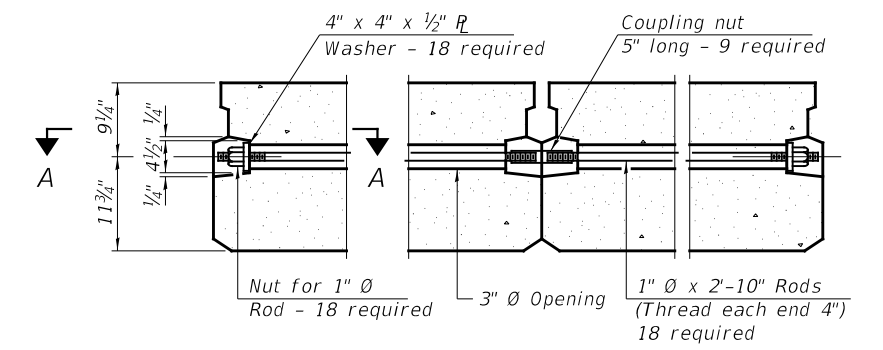
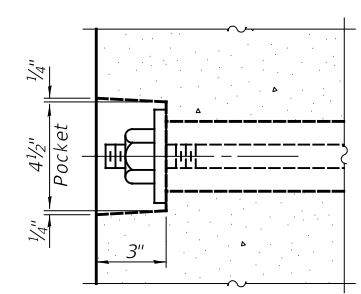
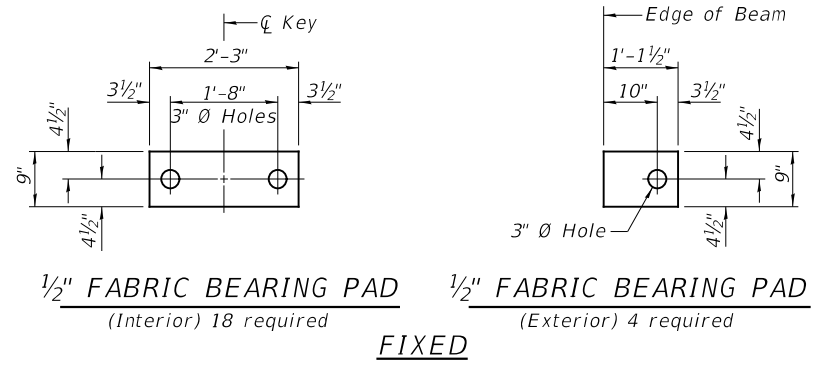
BRANCH OF POND CREEK



LOCATION SKETCH

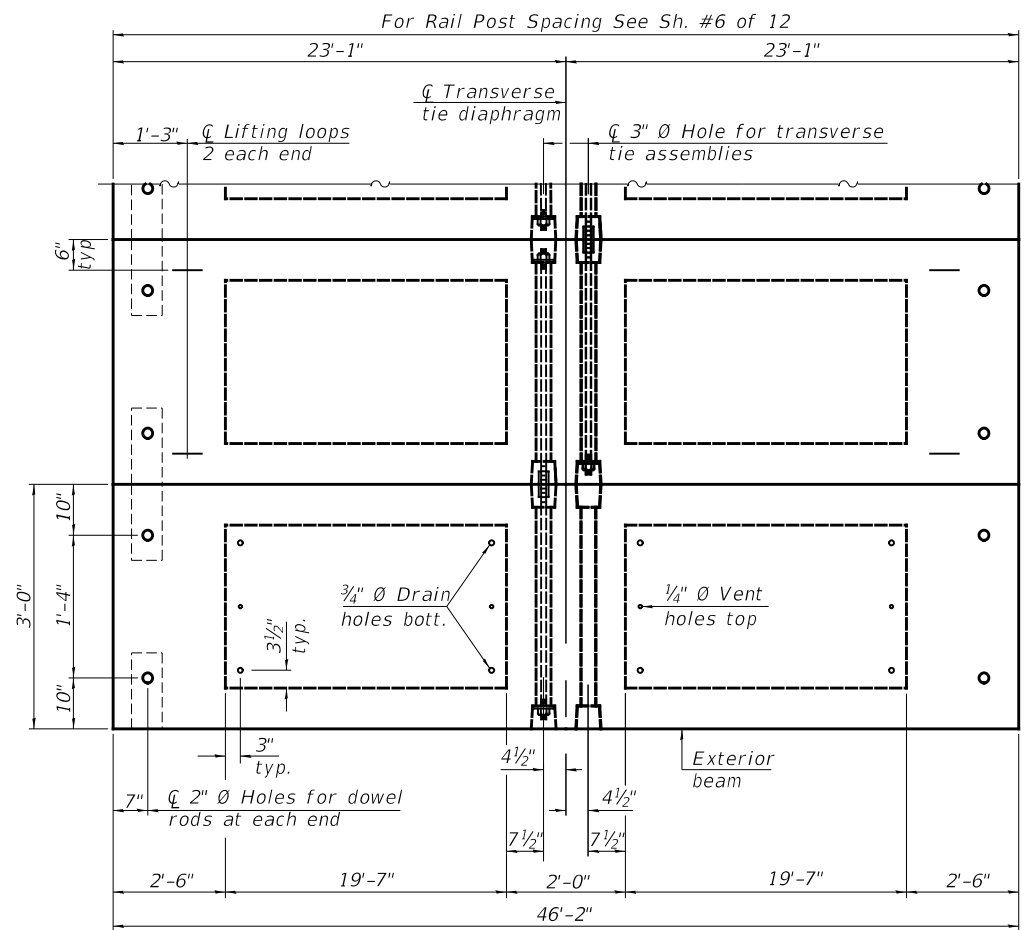
DESIGNED	S.T.M.
CHECKED	C.T.M./J.E.H.
DRAWN	S.T.M.
CHECKED	C.T.M./J.E.H.

SHEET NO. 1 12 SHEETS	F.A.S. RTE.	SECTION	COUNTY	TOTAL SHEETS	SHEET NO.
	1246	12-00241-00-BR	BUREAU	23	7
		S.N. 006-3104	CONTRACT NO. 87764		
		FED. ROAD DIST. NO. 7 ILLINOIS	FED. AID PROJECT NO. S43W(369)		

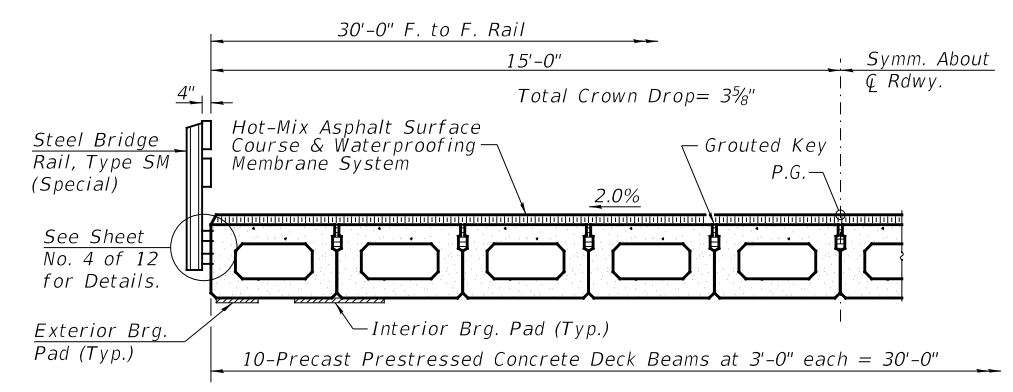


SECTION A-A

TYPICAL TRANSVERSE TIE ASSEMBLY



PLAN VIEW



HALF CROSS SECTION

BILL OF MATERIAL

ITEM	UNIT	QUANTITY
Precast Prestressed Concrete Deck Beams (21" Depth)	SQ FT	1,385

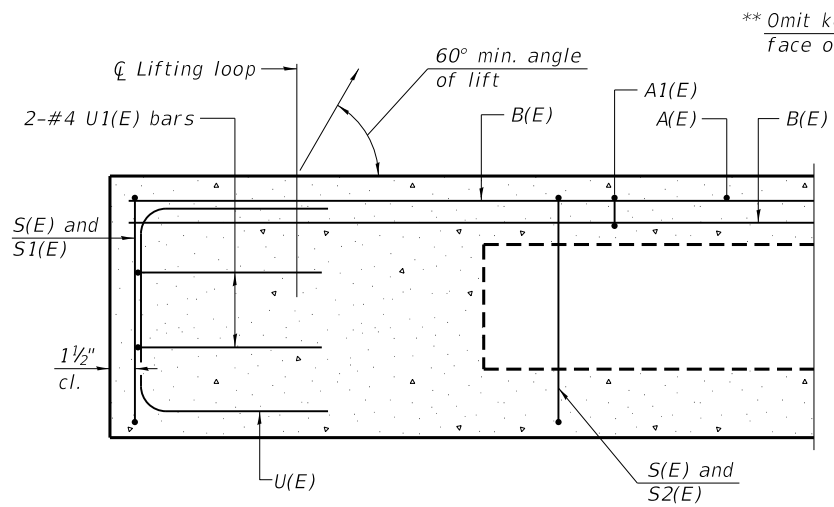
Note: Connect beams in pairs with the transverse tie configuration shown.

NOTES

Prestressing steel shall be uncoated high strength, low relaxation 7-wire strand, Grade 270. The nominal diameter shall be 1/2" and the nominal cross-sectional area shall be 0.153 sq. in. The 1" rods in the transverse tie assembly shall be tightened to a snug fit and the threads set. Pockets on exterior faces of bridge shall be filled with grout after transverse tie assembly is in place. Two 1/8" fabric adjusting shims of the dimensions of the exterior bearing pad shall be provided for each bearing pad location. A minimum 2 1/2" diameter lifting pin shall be used to engage the lifting loops during handling. Corrosion Inhibitor, per Article 1020.05(b)(10) and 1021.07 of the Standard Specifications, shall be used in the concrete for precast prestressed concrete deck beams. Compressive strength of prestressed concrete, f'c, shall be 6000 psi. Compressive strength of prestressed concrete at release, f'ci, shall be 5000 psi.

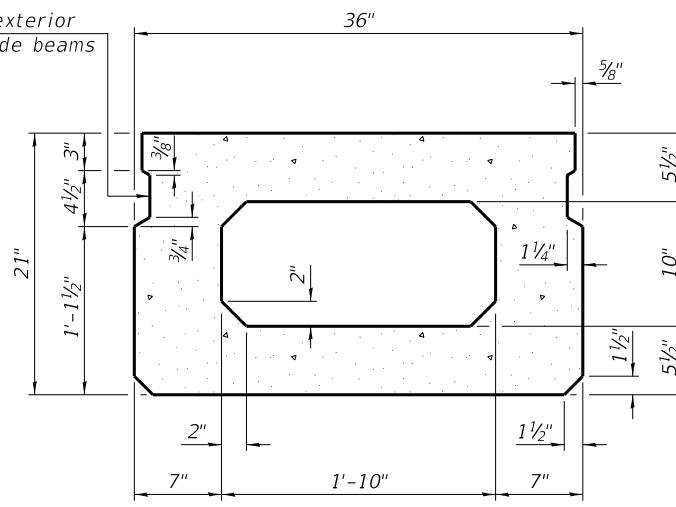
SUPERSTRUCTURE
BUREAU COUNTY
SECTION 12-00241-00-BR
COUNTY HIGHWAY 24 OVER
BRANCH OF POND CREEK

SHEET NO. 2	F.A.S. RTE.	SECTION	COUNTY	TOTAL SHEETS	SHEET NO.
	1246	12-00241-00-BR	BUREAU	23	8
12 SHEETS	S.N. 006-3104		CONTRACT NO. 87764		
FED. ROAD DIST. NO. 7		ILLINOIS	FED. AID PROJECT NO. S43W(369)		

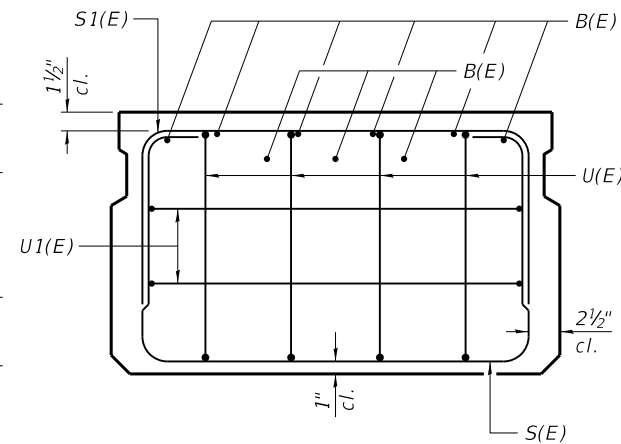


SECTION A-A

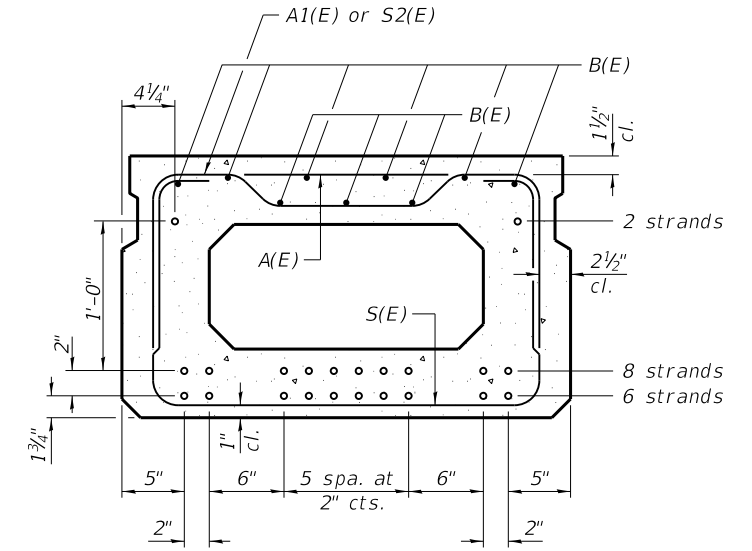
** Omit key on exterior face of outside beams



SECTION B-B
(Showing Dimensions)



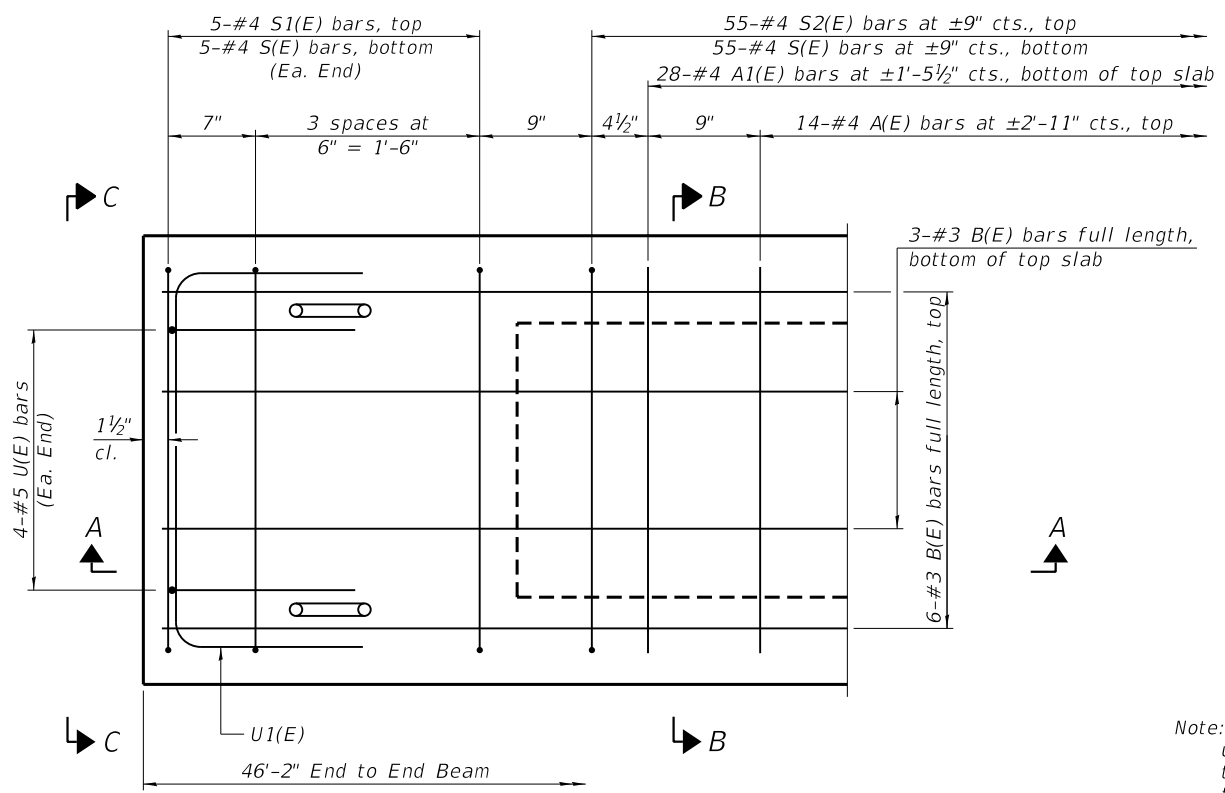
VIEW C-C



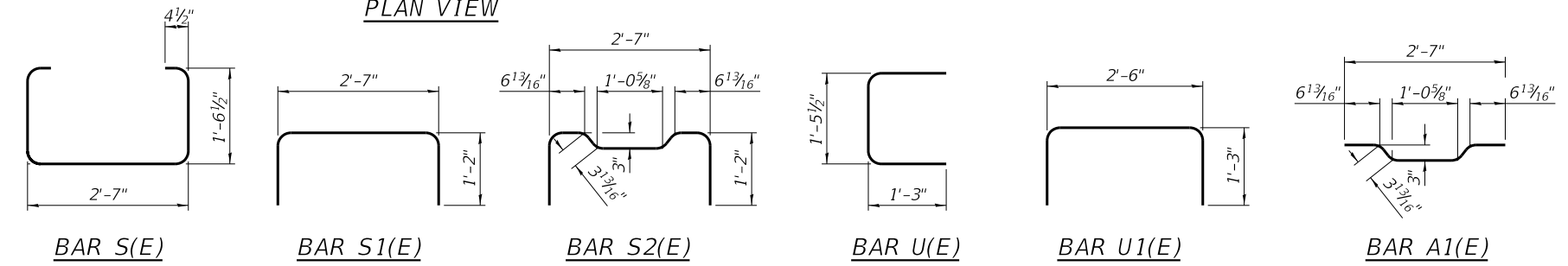
SECTION B-B

16-1/2" Ø Strands Each Strand Stressed to 30,900 Lbs.
6-Strands 1 3/4" up, 8-Strands 3 3/4" up, 2-Strands 15 3/4" up
Note: Place the number of strands specified in each row symmetrically about the centerline of beam in the permissible strand locations shown.

** Rail post anchor devices (Sheet 4 of 12) to be cast into exterior face of outside beams.



PLAN VIEW



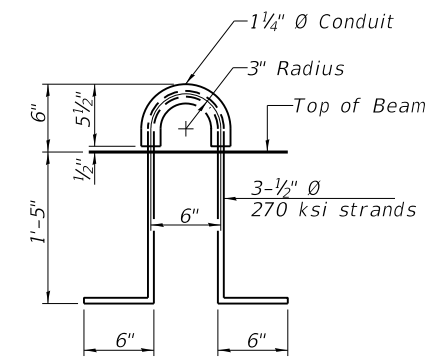
BAR LIST
ONE BEAM ONLY
(For information only)

BAR	NO.	SIZE	LENGTH	SHAPE
A(E)	14	#4	2'-7"	—
A1(E)	28	#4	2'-10"	~
B(E)	9	#3	*45'-11"	—
S(E)	65	#4	6'-5"	⌋
S1(E)	10	#4	4'-11"	⌋
S2(E)	55	#4	5'-2"	⌋
U(E)	8	#5	4'-0"	⌋
U1(E)	4	#4	5'-0"	⌋

Note: See Sheet No. 2 of 12 for additional details and Bill of Material.

*Total length, lap as necessary.

Note: Spacing of S(E) and S2(E) bars may be adjusted up to 4" in the immediate area of the transverse tie diaphragms to miss the block outs for the transverse ties.



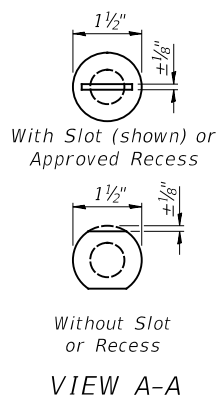
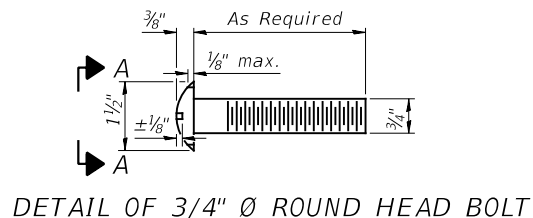
LIFTING LOOP DETAIL

MINIMUM BAR LAP
#3 bar = 1'-6"

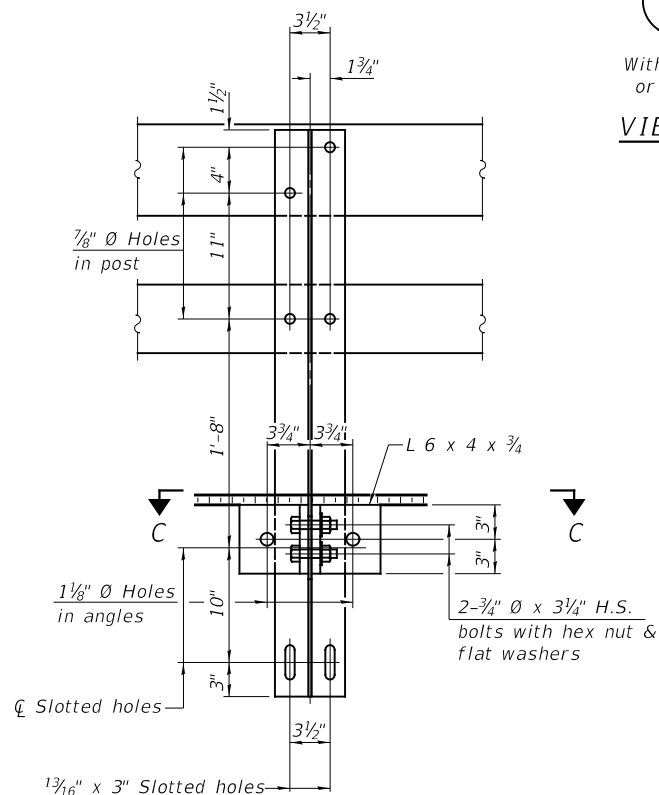
SUPERSTRUCTURE DETAILS
BUREAU COUNTY
SECTION 12-00241-00-BR
COUNTY HIGHWAY 24 OVER
BRANCH OF POND CREEK

SHEET NO. 3 12 SHEETS	F.A.S. RTE. 1246	SECTION 12-00241-00-BR	COUNTY BUREAU	TOTAL SHEETS 23	SHEET NO. 9
	S.N. 006-3104		CONTRACT NO. 87764		
FED. ROAD DIST. NO. 7 ILLINOIS			FED. AID PROJECT NO. S43W(369)		

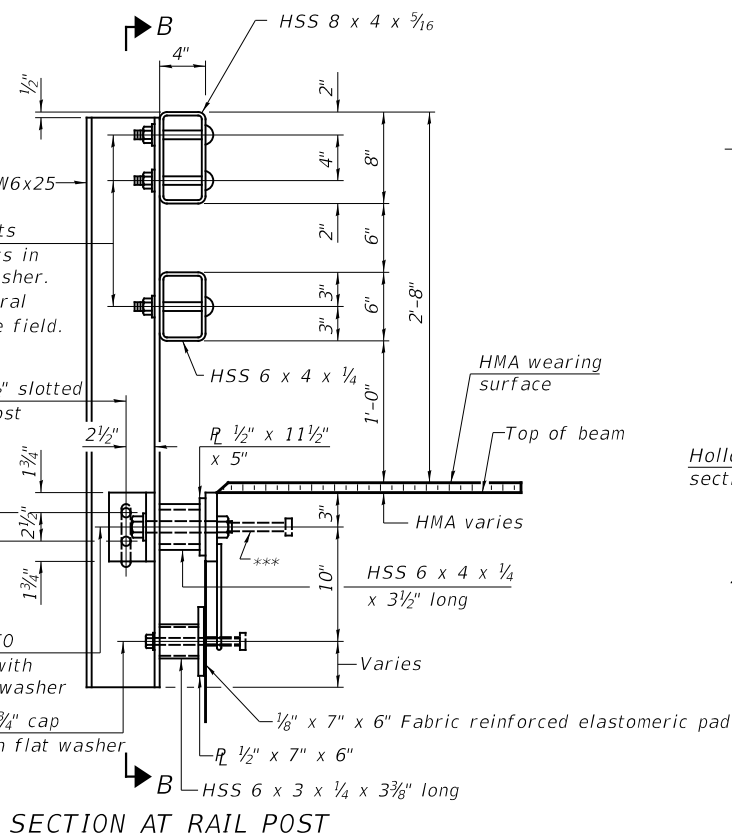
FOR RAIL POST SPACING SEE SH.#6 OF 12



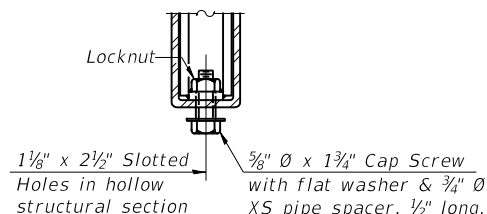
4- $\frac{3}{4}$ " \varnothing x 6" Round Head Bolts
(With slot or approved recess in head) with locknut & flat washer.
 $\frac{7}{8}$ " \varnothing holes in hollow structural section may be drilled in the field.



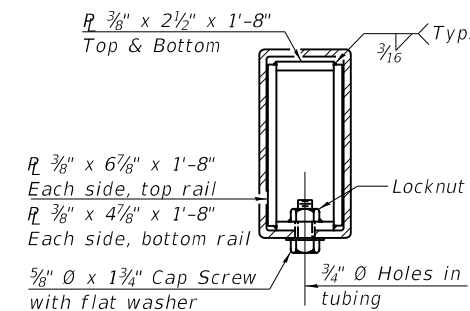
SECTION B-B



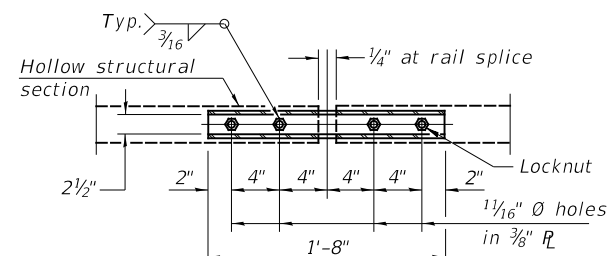
SECTION AT RAIL POST



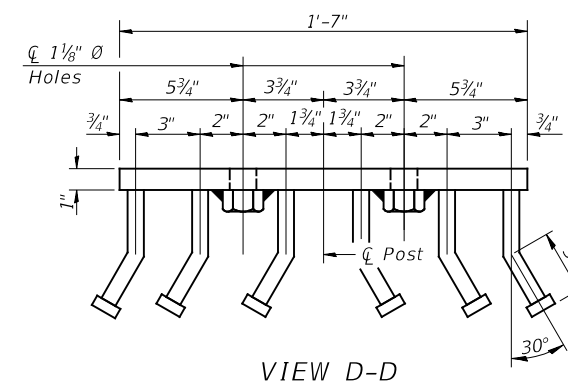
RAIL SPLICE CONNECTION AT EXPANSION JT.



SECTION AT RAIL SPLICE



PLAN-BOTT. SPLICE R TYPICAL

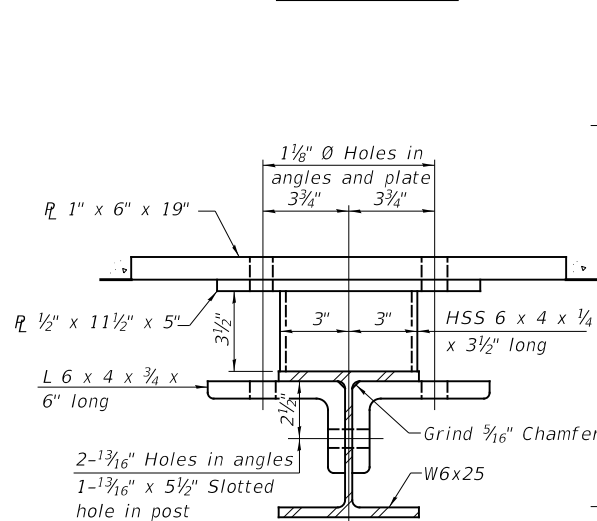


VIEW D-D

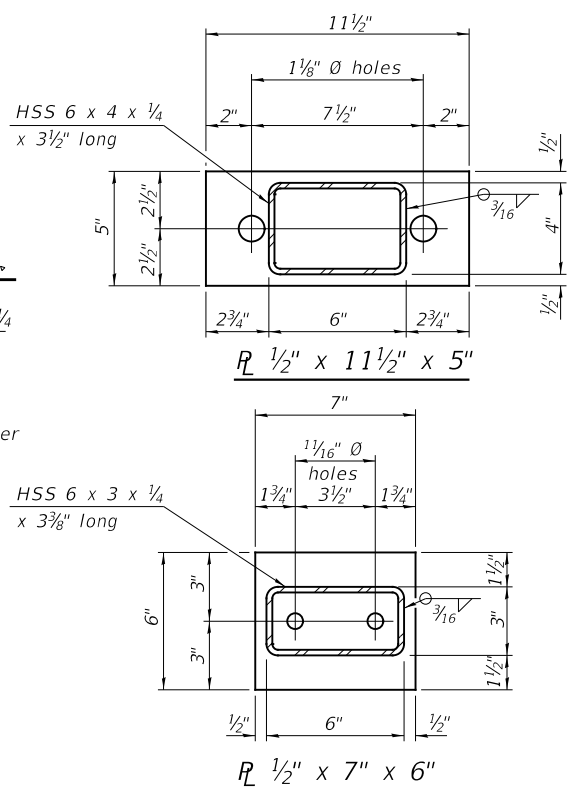
Notes:
All field drilled holes shall be coated with an approved zinc rich paint before erection.
For multi-span bridges, sufficient $\frac{1}{4}$ " x 6" x 1'-2" galvanized steel shims shall be provided to align rail between adjacent spans. Cost included with Steel Bridge Rail, Type SM (Special).
All steel rail members shall be galvanized according to Article 509.05 of the Standard Specifications.
*** The studs of the anchor devices shall be placed below the top reinforcement bars and the outermost longitudinal reinforcement bar shall be placed directly above the studs of the rail post anchor device.

BILL OF MATERIAL

ITEM	UNIT	QUANTITY
Steel Bridge Rail, Type SM (Special)	FOOT	96



SECTION C-C



ANCHOR DEVICE

*Threaded areas shall be plugged or blocked off during casting of beam. Galvanized after fabrication.
**Whenever the lower insert assemblies interfere with strand locations, the #3 bars shall be cut and adjusted in order to allow raising or lowering of the lower inserts. Maximum adjustment not to exceed $\frac{1}{2}$ ".

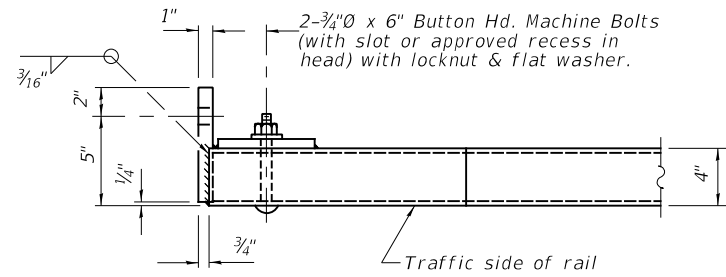
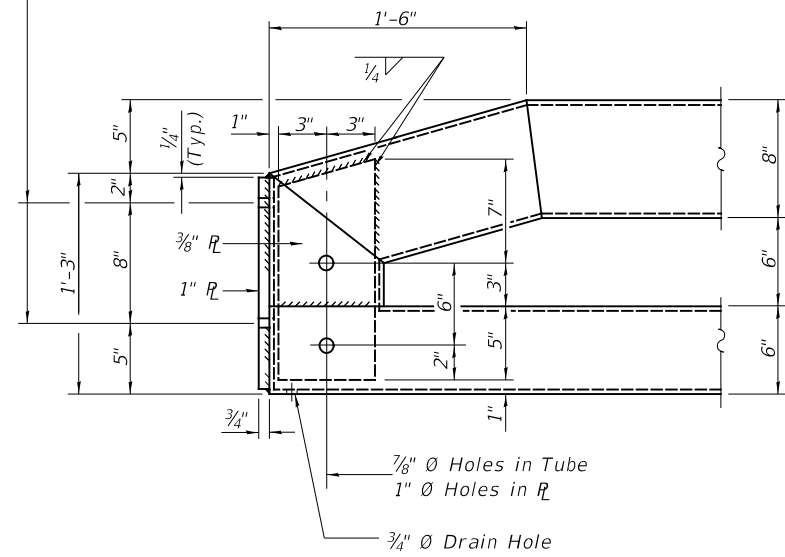
(Sheet 1 of 2)

STEEL BRIDGE RAIL
TYPE SM (SPECIAL)
BUREAU COUNTY
SECTION 12-00241-00-BR
COUNTY HIGHWAY 24 OVER
BRANCH OF POND CREEK

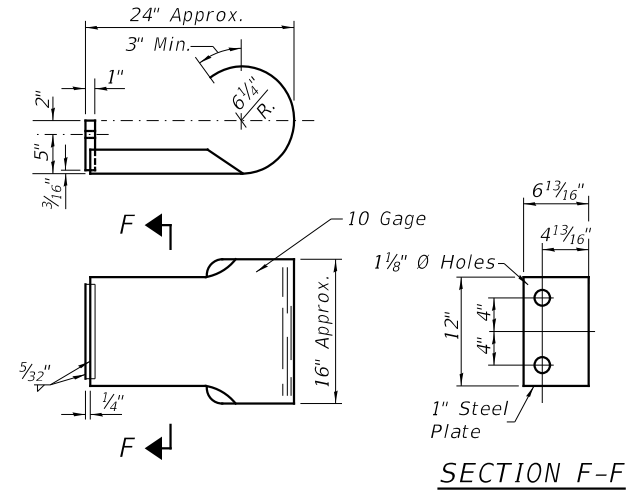
SHEET NO.	F.A.S. RTE.	SECTION	COUNTY	TOTAL SHEETS	SHEET NO.
4	1246	12-00241-00-BR	BUREAU	23	10
12 SHEETS		S.N. 006-3104		CONTRACT NO. 87764	
FED. ROAD DIST. NO. 7 ILLINOIS			FED. AID PROJECT NO. S43W(369)		

FOR RAIL POST SPACING SEE SH.#6 OF 12

1 1/8" Ø Holes for 1" Ø x 4" Round Head Bolts.
Provide 2 flat washers & locknuts for curled end section connection & connection shown on Std. BLR 27.



END OF RAIL DETAILS



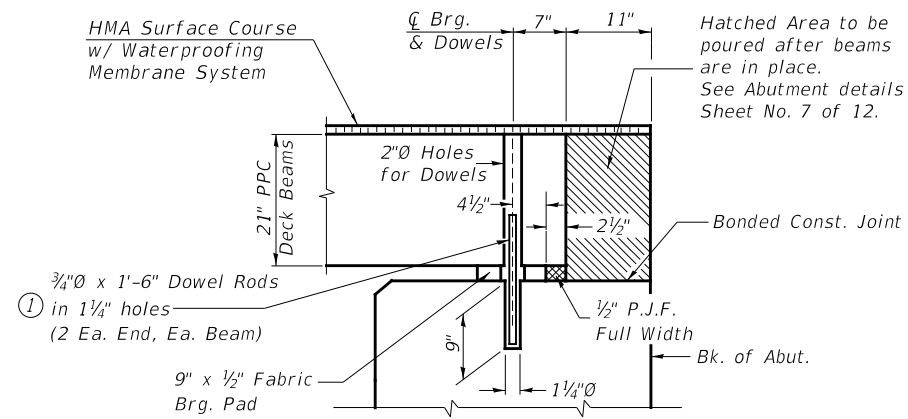
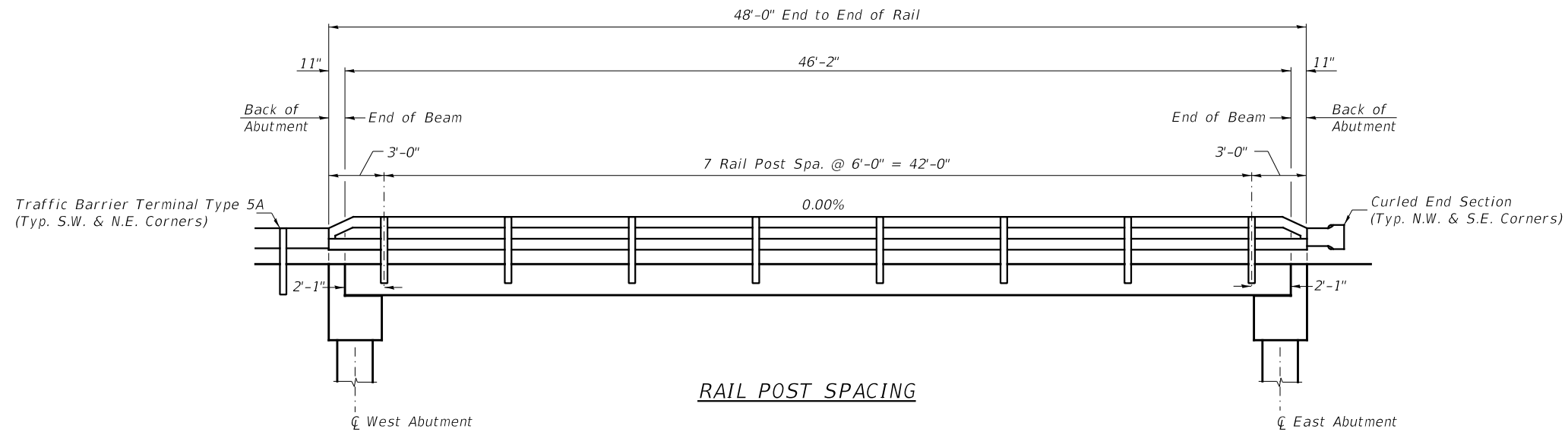
CURLED END SECTION

(2 Req'd) Cost Included with Steel Bridge Rail, Type SM (Special).
Terminal Markers - Direct Applied shall be placed on end of each Curled End Section. (Typ. N.W. & S.E. Corners)

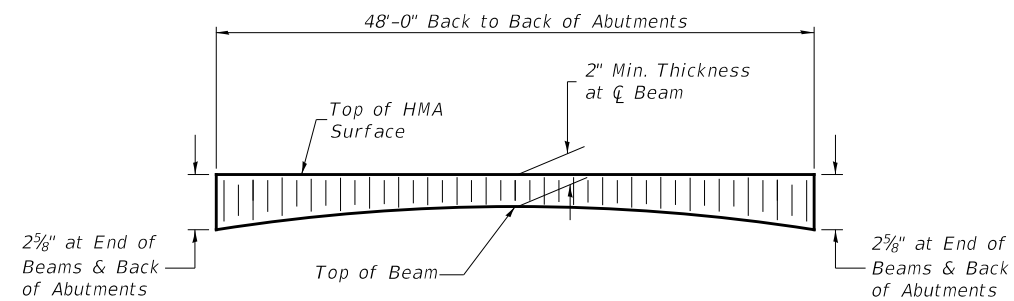
STEEL BRIDGE RAIL,
TYPE SM (SPECIAL)
BUREAU COUNTY
SECTION 12-00241-00-BR
COUNTY HIGHWAY 24 OVER
BRANCH OF POND CREEK

(Sheet 2 of 2)

SHEET NO. 5 12 SHEETS	F.A.S. RTE. 1246	SECTION 12-00241-00-BR	COUNTY BUREAU	TOTAL SHEETS 23	SHEET NO. 11
	S.N. 006-3104		CONTRACT NO. 87764		
	FED. ROAD DIST. NO. 7	ILLINOIS	FED. AID PROJECT NO. S43W(369)		

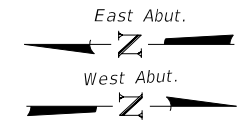
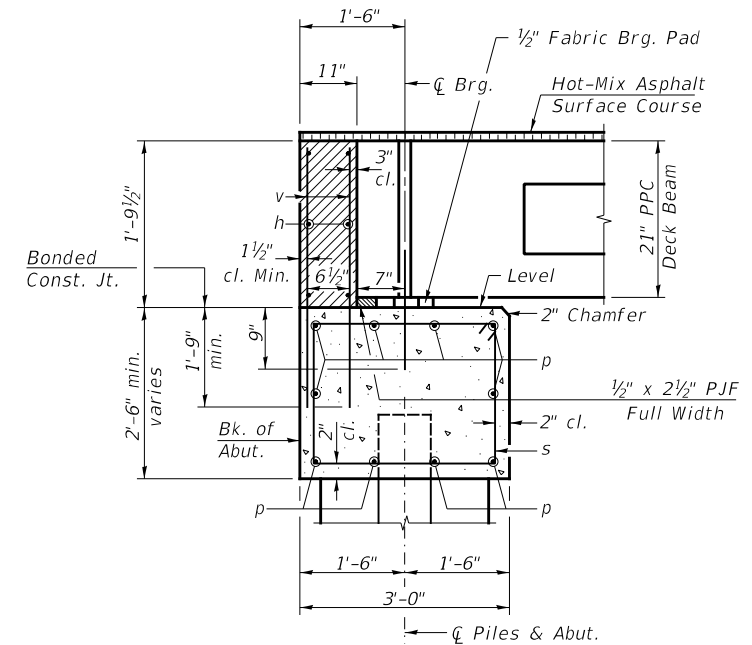
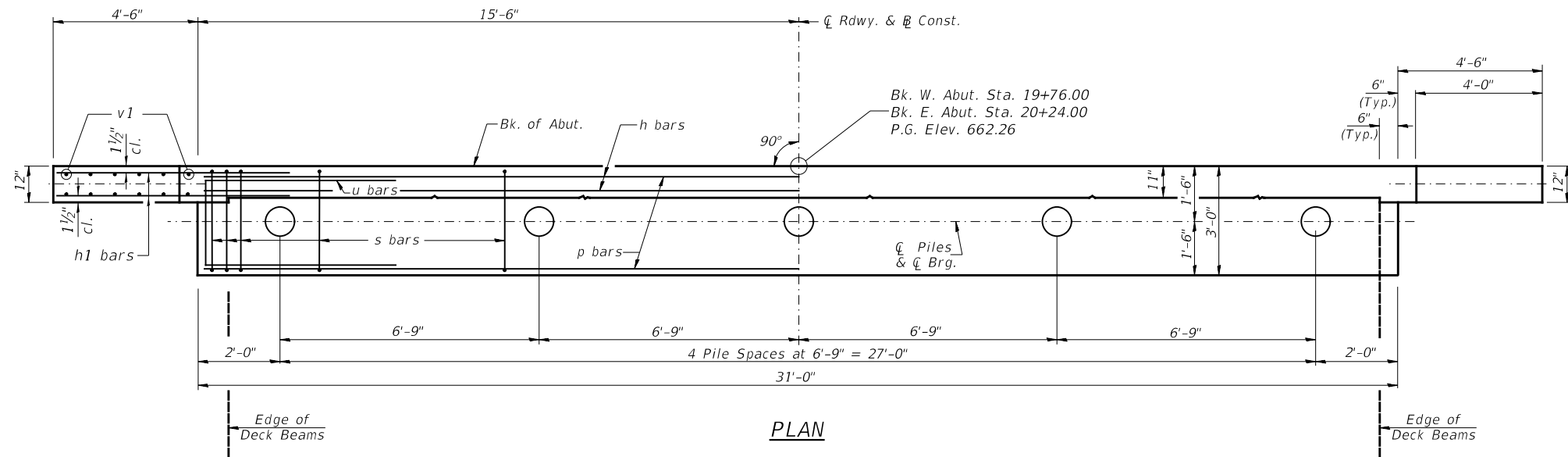


① Dowel Rods to be grouted after beams are in place and allowed to cure (Min. 24 hr.) prior to grouting the shear keys.



**RAIL POST SPACING AND
SUPERSTRUCTURE DETAILS
BUREAU COUNTY
SECTION 12-00241-00-BR
COUNTY HIGHWAY 24 OVER
BRANCH OF POND CREEK**

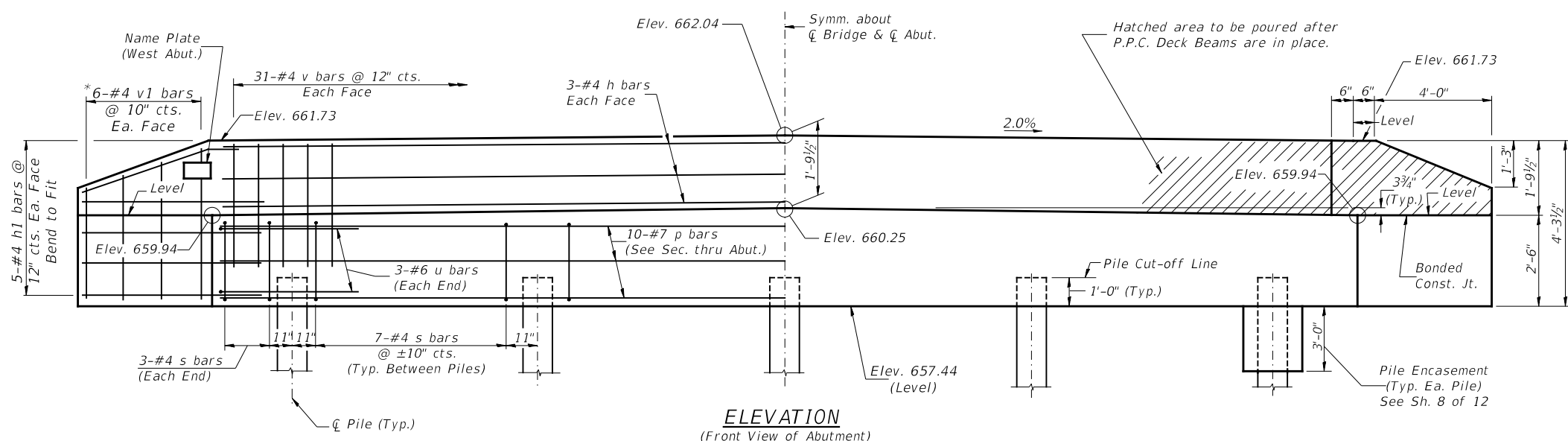
SHEET NO. 6 12 SHEETS	F.A.S. RTE. 1246	SECTION 12-00241-00-BR	COUNTY BUREAU	TOTAL SHEETS 23	SHEET NO. 12
	S.N. 006-3104		CONTRACT NO. 87764		
FED. ROAD DIST. NO. 7		ILLINOIS	FED. AID PROJECT NO. S43W(369)		



SECTION THRU ABUT.

TWO ABUTMENTS
BILL OF MATERIAL

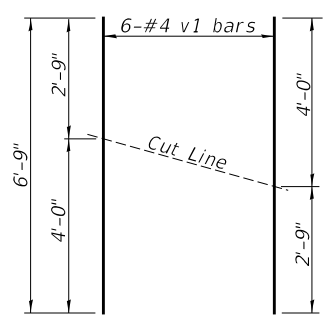
BAR	NO.	SIZE	LENGTH	SHAPE	
h	12	#4	30'-9"	—	
h1	40	#4	6'-6"	—	
p	20	#7	30'-9"	—	
s	68	#4	10'-5"	□	
u	12	#6	11'-7"	□	
v	124	#4	3'-6"	—	
v1	24	#4	6'-9"	—	
Concrete Structures				CU YD	24.3
Concrete Encasement				CU YD	2.6
Reinforcement Bars				POUND	2,760
Furnishing Metal Shell Piles 12"x0.250"				FOOT	280
Driving Piles				FOOT	280
Test Pile Metal Shells				EACH	2
Name Plates				EACH	1



ELEVATION
(Front View of Abutment)

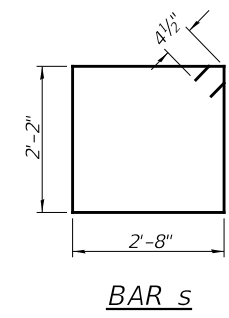
PILE DATA

Type & Size: Metal Shell 12"x0.250" walls
 Nominal Required Bearing: 209 kips
 Factored Resistance Available: 115 kips
 Est. Length: 35' West Abutment
 35' East Abutment
 No. Req'd.: 10 (Includes 1 Test Pile at Each Abut.)

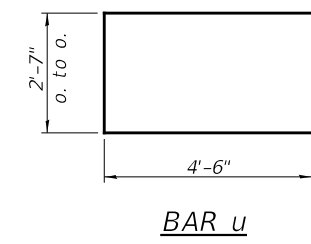


BAR CUTTING DIAGRAM

*Order v1 bars full length. Cut as shown and use remainder of bars in opposite face.



BAR s



BAR u

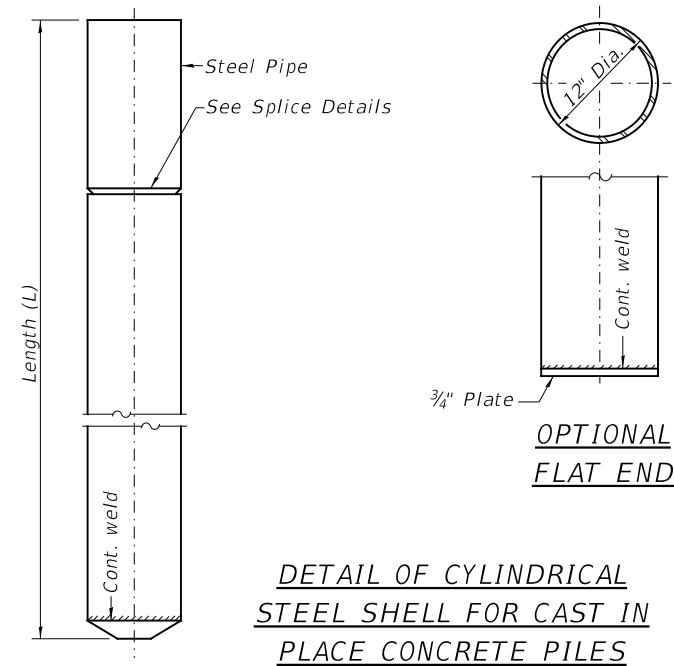
NOTES

- The backwall and the portion of the wingwalls above the bonded construction joint shall be cast against the in-place beam.
- All edges shall have standard 3/4" chamfer.

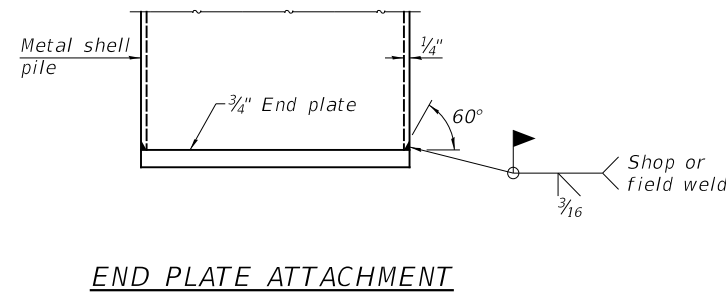
ABUTMENTS
BUREAU COUNTY
SECTION 12-00241-00-BR
COUNTY HIGHWAY 24 OVER
BRANCH OF POND CREEK

SHEET NO. 7 12 SHEETS	F.A.S. RTE. 1246	SECTION 12-00241-00-BR	COUNTY BUREAU	TOTAL SHEETS 23	SHEET NO. 13
	S.N. 006-3104		CONTRACT NO. 87764		
FED. ROAD DIST. NO. 7		ILLINOIS	FED. AID PROJECT NO. S43W(369)		

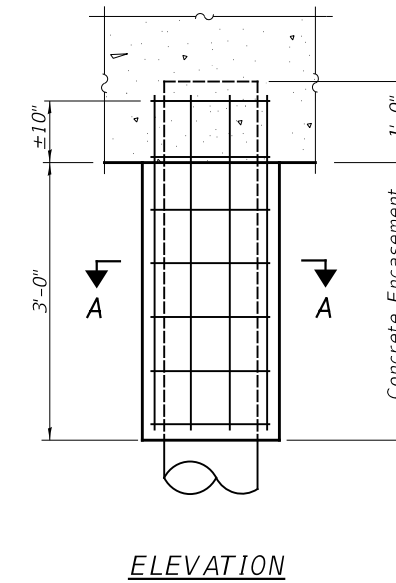
Notes: Driving and bearing ends of pipe shall be cut square. The thickness of the shell shall be 0.25 inches with a tolerance of 5%. The shell shall be according to Article 1006.05(a) of the Standard Specifications, and shall be ASTM A252 Grade 3.



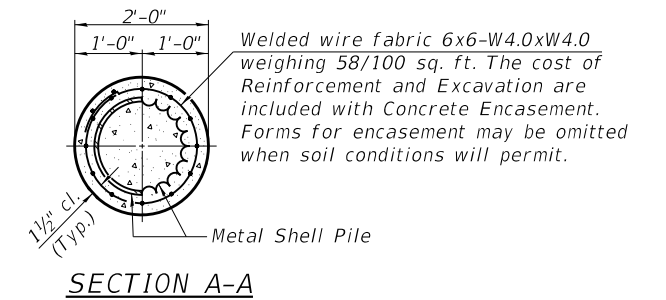
DETAIL OF CYLINDRICAL STEEL SHELL FOR CAST IN PLACE CONCRETE PILES



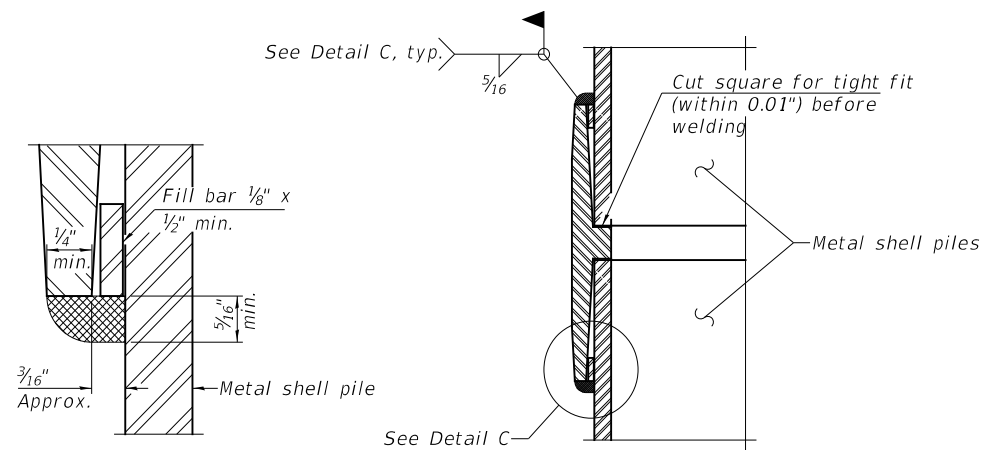
END PLATE ATTACHMENT



ELEVATION



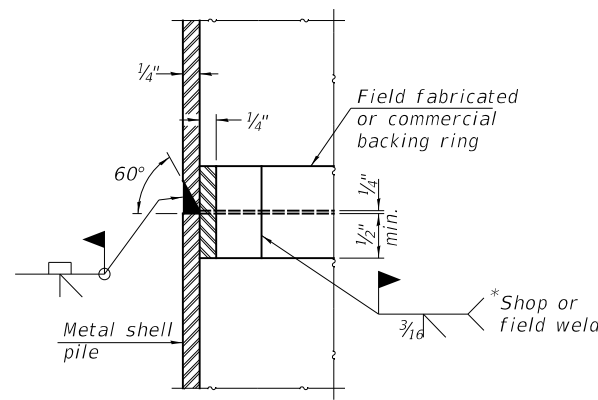
DETAIL OF METAL SHELL PILE ENCASEMENT AT ABUTMENTS



DETAIL C

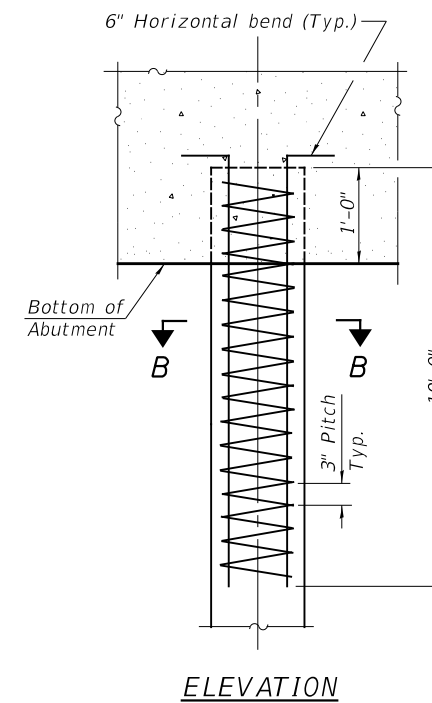
WELDED COMMERCIAL SPLICE

Notes:
The 1/8" x 1/2" min. fill bar may be constructed of 2 bars with a 1/8" max. gap between them.
Pile segments shall be driven to solid contact with splicer before welding.



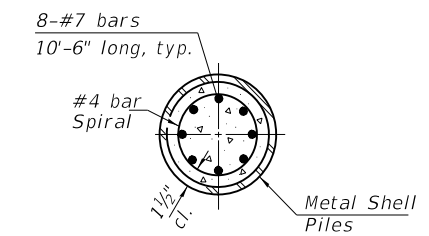
COMPLETE PENETRATION WELD SPLICE

* Field fabricated backing ring may be made from pile shell by removing segment to allow reducing circumference and vertically rejoin with partial joint penetration weld.



ELEVATION

REINFORCEMENT AT ABUTMENTS



The cost of Reinforcement is included with Furnishing Metal Shell Piles 12"x0.250"

METAL SHELL PILE DETAILS

BUREAU COUNTY

SECTION 12-00241-00-BR

COUNTY HIGHWAY 24 OVER

BRANCH OF POND CREEK

Note:
The metal shell piles shall be according to Article 1006.05 of the Standard Specifications.

SHEET NO. 8 12 SHEETS	F.A.S. RTE. 1246	SECTION 12-00241-00-BR	COUNTY BUREAU	TOTAL SHEETS 23	SHEET NO. 14
	S.N. 006-3104		CONTRACT NO. 87764		
FED. ROAD DIST. NO. 7		ILLINOIS	FED. AID PROJECT NO. S43W(369)		

Midwest Testing Services, Inc.
3705 Progress Blvd.
Peru, IL 61354

BORING LOG
Sheet 1 of 4

Phone: 815-223-6696
Fax: 815-223-6659
e-mail: mts37@comcast.net

Client: Hutchison Engineering, Inc.
Project Name: CH 24 (FAS) 1246 Section 12-00214-00-BR
Project Site: Bureau County, Il.

Boring No. B-1
Surface Elev. 662.10
Auger Depth 76' Rotary Depth NA
Start Date 12/05/15 Finish Date 12/05/15

Location: 8' Right of Station 19+70

DRILLED BY
Randy Safranski
Diedrich D-120

(DEPTH) ELEV.	DESCRIPTION OF MATERIALS	Graphic Log	Depth in feet	SAMPLES					DRY DENSITY (PCF)	REMARKS
				Sample No.	Sample Type	Qu (TSF)	N Value (Blows)	Bulge / Shear		
662.10										
661.10			1							
660.10	Medium Brown Gravely Clay (Fill)		2							
659.10			3	1	SS	---	13	---	12	
658.10			4							
657.10			5	2	SS	1.4	6	B	23	
656.10	Stiff Black Clay		6							
655.10			7							
654.10			8	3	SS	1.2	5	B	24	
653.10	Stiff Brown Clay With Gravel Seams		9							
652.10			10	4	SS	1.5	7	B	27	
651.10			11							
650.10			12							
649.10	Very Stiff Brownish Gray Clay		13	5	SS	2.0	12	B	19	
648.10			14							
647.10			15	6	SS	2.1	12	B	18	
646.10			16							
645.10	Medium Brown Fine And Coarse Sand		17							
644.10			18	7	SS	---	14	---	---	
643.10			19							
642.10	Very Stiff Gray Clay		20	8	SS	2.0	13	B	17	

Groundwater Data: Ststic water level after auger removal - Elevation 653.0.
Comments:

Midwest Testing Services, Inc.
3705 Progress Blvd.
Peru, IL 61354

BORING LOG
Sheet 2 of 4

Phone: 815-223-6696
Fax: 815-223-6659
e-mail: mts37@comcast.net

Client: Hutchison Engineering, Inc.
Project Name: CH 24 (FAS) 1246 Section 12-00214-00-BR
Project Site: Bureau County, Il.

Boring No. B-1
Surface Elev. 662.10
Auger Depth 76' Rotary Depth NA
Start Date 12/05/15 Finish Date 12/05/15

Location: 8' Right of Station 19+70

DRILLED BY
Randy Safranski
Diedrich D-120

(DEPTH) ELEV.	DESCRIPTION OF MATERIALS	Graphic Log	Depth in feet	SAMPLES					DRY DENSITY (PCF)	REMARKS
				Sample No.	Sample Type	Qu (TSF)	N Value (Blows)	Bulge / Shear		
641.10										
640.10			22							
639.10			23	9	SS	2.0	12	B	19	
638.10			24							
637.10			25							
636.10			26	10	SS	2.3	13	B	19	
635.10			27							
634.10			28	11	SS	2.1	12	B	20	
633.10	Very Stiff Gray Clay Till With Occasional Gravel		29							
632.10			30							
631.10			31	12	SS	3.2	22	B	15	
630.10			32							
629.10			33	13	SS	2.8	17	B	18	
628.10			34							
627.10			35							
626.10			36	14	SS	3.0	18	B	18	
625.10			37							
624.10			38							
623.10			39							
622.10			40							
621.10	Hard Gray Clay Till		41	15	SS	4.5	26	S	17	

Groundwater Data: Ststic water level after auger removal - Elevation 653.0.
Comments:

SOIL BORING LOGS
BUREAU COUNTY
SECTION 12-00241-00-BR
COUNTY HIGHWAY 24 OVER
BRANCH OF POND CREEK

SHEET NO. 9	F.A.S. RTE.	SECTION	COUNTY	TOTAL SHEETS	SHEET NO.
	1246	12-00241-00-BR	BUREAU	23	15
12 SHEETS	S.N. 006-3104		CONTRACT NO. 87764		
FED. ROAD DIST. NO. 7		ILLINOIS	FED. AID PROJECT NO. S43W(369)		

Midwest Testing Services, Inc.
3705 Progress Blvd.
Peru, IL 61354

BORING LOG
Sheet 3 of 4

Phone: 815-223-6696
Fax: 815-223-6659
e-mail: mts37@comcast.net

Client: Hutchison Engineering, Inc.
Project Name: CH 24 (FAS) 1246 Section 12-00214-00-BR
Project Site: Bureau County, Il.

Boring No. B-1
Surface Elev. 662.10
Auger Depth 76' Rotary Depth NA
Start Date 12/05/15 Finish Date 12/05/15

Location: 8' Right of Station 19+70

DRILLED BY
Randy Safranski
Diedrich D-120

(DEPTH) ELEV.	DESCRIPTION OF MATERIALS	Graphic Log	Depth in feet	SAMPLES						DRILLED BY
				Sample No.	Sample Type	Qu (TSF)	N Value (Blows)	Bulge / Shear	Moisture (%)	
620.10	Hard Gray Clay Till		43						Randy Safranski Diedrich D-120	
619.10			44							
618.10			45	16	SS	4.3	32	S		12
617.10			46							
616.10	Dense Brown And Gray Coarse Gravel		47						Randy Safranski Diedrich D-120	
615.10			48							
614.10			49							
613.10			50	17	SS	---	36	---		----
612.10	Hard Gray Clay Till		51						Randy Safranski Diedrich D-120	
611.10			52							
610.10			53							
609.10			54							
608.10	Hard Gray Clay Till		55						Randy Safranski Diedrich D-120	
607.10			56	18	SS	4.4	30	S		12
606.10			57							
605.10			58							
604.10	Hard Gray Clay Till		59						Randy Safranski Diedrich D-120	
603.10			60							
602.10			61	19	SS	4.8	35	S		10
601.10			62							
600.10										

Groundwater Data: Ststic water level after auger removal - Elevation 653.0.
Comments:

Midwest Testing Services, Inc.
3705 Progress Blvd.
Peru, IL 61354

BORING LOG
Sheet 4 of 4

Phone: 815-223-6696
Fax: 815-223-6659
e-mail: mts37@comcast.net

Client: Hutchison Engineering, Inc.
Project Name: CH 24 (FAS) 1246 Section 12-00214-00-BR
Project Site: Bureau County, Il.

Boring No. B-1
Surface Elev. 662.10
Auger Depth 76' Rotary Depth NA
Start Date 12/05/15 Finish Date 12/05/15

Location: 8' Right of Station 19+70

DRILLED BY
Randy Safranski
Diedrich D-120

(DEPTH) ELEV.	DESCRIPTION OF MATERIALS	Graphic Log	Depth in feet	SAMPLES						DRILLED BY
				Sample No.	Sample Type	Qu (TSF)	N Value (Blows)	Bulge / Shear	Moisture (%)	
599.10	Hard Gray Clay Till		64						Randy Safranski Diedrich D-120	
598.10			65	20	SS	4.1	29	S		12
597.10			66							
596.10			67							
595.10	Hard Gray Clay Till		68						Randy Safranski Diedrich D-120	
594.10			69							
593.10			70	21	SS	4.7	37	S		12
592.10			71							
591.10	Hard Gray Clay Till		72						Randy Safranski Diedrich D-120	
590.10			73							
589.10			74							
588.10			75							
587.10	Hard Gray Clay Till		76	22	SS	4.5	36	S	11	
586.10			77							
585.10			78							
584.10			79							
583.10	Hard Gray Clay Till		80						Randy Safranski Diedrich D-120	
582.10			81							
581.10			82							
580.10			83							
579.10										

Groundwater Data: Ststic water level after auger removal - Elevation 653.0.
Comments:

SOIL BORING LOGS
BUREAU COUNTY
SECTION 12-00241-00-BR
COUNTY HIGHWAY 24 OVER
BRANCH OF POND CREEK

SHEET NO. 10	F.A.S. RTE.	SECTION	COUNTY	TOTAL SHEETS	SHEET NO.
	1246	12-00241-00-BR	BUREAU	23	16
12 SHEETS	S.N. 006-3104		CONTRACT NO. 87764		
FED. ROAD DIST. NO. 7		ILLINOIS	FED. AID PROJECT NO. S43W(369)		

Midwest Testing Services, Inc.
3705 Progress Blvd.
Peru, IL 61354

BORING LOG
Sheet 1 of 4

Phone: 815-223-6696
Fax: 815-223-6659
e-mail: mts37@comcast.net

Client: Hutchison Engineering, Inc.
Project Name: CH 24 (FAS) 1246 Section 12-00214-00-BR
Project Site: Bureau County, Il.

Boring No. B-2
Surface Elev. 662.10
Auger Depth 76' Rotary Depth NA
Start Date 12/05/15 Finish Date 12/05/15

Location: 6' Left of Station 20+30

DRILLED BY: Randy Safranski
Diedrich D-120

(DEPTH) ELEV.	DESCRIPTION OF MATERIALS	Graphic Log	Depth in feet	SAMPLES					DRILLED BY	REMARKS
				Sample No.	Sample Type	Qu (TSF)	N Value (Blows)	Bulge / Shear		
662.10										
661.10	Medium Brown Gravelly Clay (Fill)		1							
660.10			2							
659.10			3	1	SS	---	16	---	10	
658.10	Stiff Black Clay		4							
657.10			5	2	SS	1.3	6	B	23	
656.10	Stiff Brownish Gray Clay		6							
655.10			7							
654.10			8	3	SS	1.5	7	B	21	
653.10			9							
652.10			10	4	SS	1.1	5	B	22	
651.10	Medium Brown Fine Sand And Fine Gravel		11							
650.10			12							
649.10			13	5	SS	1.9	10	B	20	
648.10		14								
647.10		15	6	SS	---	17	---	---		
646.10		16								
645.10		17								
644.10		18	7	SS	---	21	---	---		
643.10		19								
642.10		20	8	SS	----	10	---	---		

Groundwater Data: Ststic water level after auger removal - Elevation 653.5.
Comments:

Midwest Testing Services, Inc.
3705 Progress Blvd.
Peru, IL 61354

BORING LOG
Sheet 2 of 4

Phone: 815-223-6696
Fax: 815-223-6659
e-mail: mts37@comcast.net

Client: Hutchison Engineering, Inc.
Project Name: CH 24 (FAS) 1246 Section 12-00214-00-BR
Project Site: Bureau County, Il.

Boring No. B-2
Surface Elev. 662.10
Auger Depth 76' Rotary Depth NA
Start Date 12/05/15 Finish Date 12/05/15

Location: 6' Left of Station 20+30

DRILLED BY: Randy Safranski
Diedrich D-120

(DEPTH) ELEV.	DESCRIPTION OF MATERIALS	Graphic Log	Depth in feet	SAMPLES					DRILLED BY	REMARKS
				Sample No.	Sample Type	Qu (TSF)	N Value (Blows)	Bulge / Shear		
641.10										
640.10	Very Stiff Gray Clay Till With Occasional Gravel		22							
639.10			23	9	SS	2.6	15	B	16	
638.10			24							
637.10			25							
636.10			26	10	SS	2.3	13	B	18	
635.10			27							
634.10			28	11	SS	2.4	13	B	18	
633.10			29							
632.10			30							
631.10			31	12	SS	2.9	17	B	16	
630.10			32							
629.10			33	13	SS	2.5	14	B	18	
628.10			34							
627.10			35							
626.10			36	14	SS	2.2	12	B	12	
625.10		37								
624.10	Very Stiff Gary Clay Till		38							
623.10			39							
622.10			40							
621.10			41	15	SS	3.6	23	B	4	
620.10			42							

Groundwater Data: Ststic water level after auger removal - Elevation 653.5.
Comments:

SOIL BORING LOGS
BUREAU COUNTY
SECTION 12-00241-00-BR
COUNTY HIGHWAY 24 OVER
BRANCH OF POND CREEK

SHEET NO. 11	F.A.S. RTE.	SECTION	COUNTY	TOTAL SHEETS	SHEET NO.
	1246	12-00241-00-BR	BUREAU	23	17
12 SHEETS	S.N. 006-3104		CONTRACT NO. 87764		
FED. ROAD DIST. NO. 7		ILLINOIS	FED. AID PROJECT NO. S43W(369)		

Midwest Testing Services, Inc.
3705 Progress Blvd.
Peru, IL 61354

BORING LOG
Sheet 3 of 4

Phone: 815-223-6696
Fax: 815-223-6659
e-mail: mts37@comcast.net

Client: Hutchison Engineering, Inc.
Project Name: CH 24 (FAS) 1246 Section 12-00214-00-BR
Project Site: Bureau County, Il.

Boring No. B-2
Surface Elev. 662.10
Auger Depth 76' Rotary Depth NA
Start Date 12/05/15 Finish Date 12/05/15

Location: 6' Left of Station 20+30

(DEPTH) ELEV.	DESCRIPTION OF MATERIALS	Graphic Log	Depth in feet	SAMPLES					DRILLED BY	REMARKS			
				Sample No.	Sample Type	Qu (TSF)	N Value (Blows)	Bulge / Shear			Moisture (%)	Dry Density (PCF)	
620.10	Hard Gray Clay Till		43	16	SS	4.1	28	B	13	Randy Safranski Diedrich D-120			
619.10				Very Dense To Dense Brown And Gray Fine To Coarse Gravel	44								
618.10						45							
617.10													
616.10	Very Dense To Dense Brown And Gray Fine To Coarse Gravel		46	17	SS	---	52	---	---				
615.10				47									
614.10					48								
613.10													
612.10	Hard Gray Clay Till		49	18	SS	---	41	---	---				
611.10				50									
610.10					51								
609.10													
608.10	Hard Gray Clay Till		52										
607.10				53									
606.10					54								
605.10													
604.10	Hard Gray Clay Till		55	19	SS	5.1	38	S	11				
603.10				56									
602.10					57								
601.10													
600.10			58										

Groundwater Data: Ststic water level after auger removal - Elevation 653.5.
Comments:

Midwest Testing Services, Inc.
3705 Progress Blvd.
Peru, IL 61354

BORING LOG
Sheet 4 of 4

Phone: 815-223-6696
Fax: 815-223-6659
e-mail: mts37@comcast.net

Client: Hutchison Engineering, Inc.
Project Name: CH 24 (FAS) 1246 Section 12-00214-00-BR
Project Site: Bureau County, Il.

Boring No. B-2
Surface Elev. 662.10
Auger Depth 76' Rotary Depth NA
Start Date 12/05/15 Finish Date 12/05/15

Location: 6' Left of Station 20+30

(DEPTH) ELEV.	DESCRIPTION OF MATERIALS	Graphic Log	Depth in feet	SAMPLES					DRILLED BY	REMARKS		
				Sample No.	Sample Type	Qu (TSF)	N Value (Blows)	Bulge / Shear			Moisture (%)	Dry Density (PCF)
599.10	Hard Gray Clay Till		64	20	SS	4.6	25	B	12	Randy Safranski Diedrich D-120		
598.10				65								
597.10					66							
596.10												
595.10	Hard Gray Clay Till		67									
594.10				68								
593.10					69							
592.10												
591.10	Hard Gray Clay Till		70	21	SS	5.0	29	S	11			
590.10				71								
589.10					72							
588.10												
587.10	Hard Gray Clay Till		73	22	SS	5.2	33	S	10			
586.10				74								
585.10					75							
584.10												
583.10	Hard Gray Clay Till		76									
582.10				77								
581.10					78							
580.10												
579.10			79									

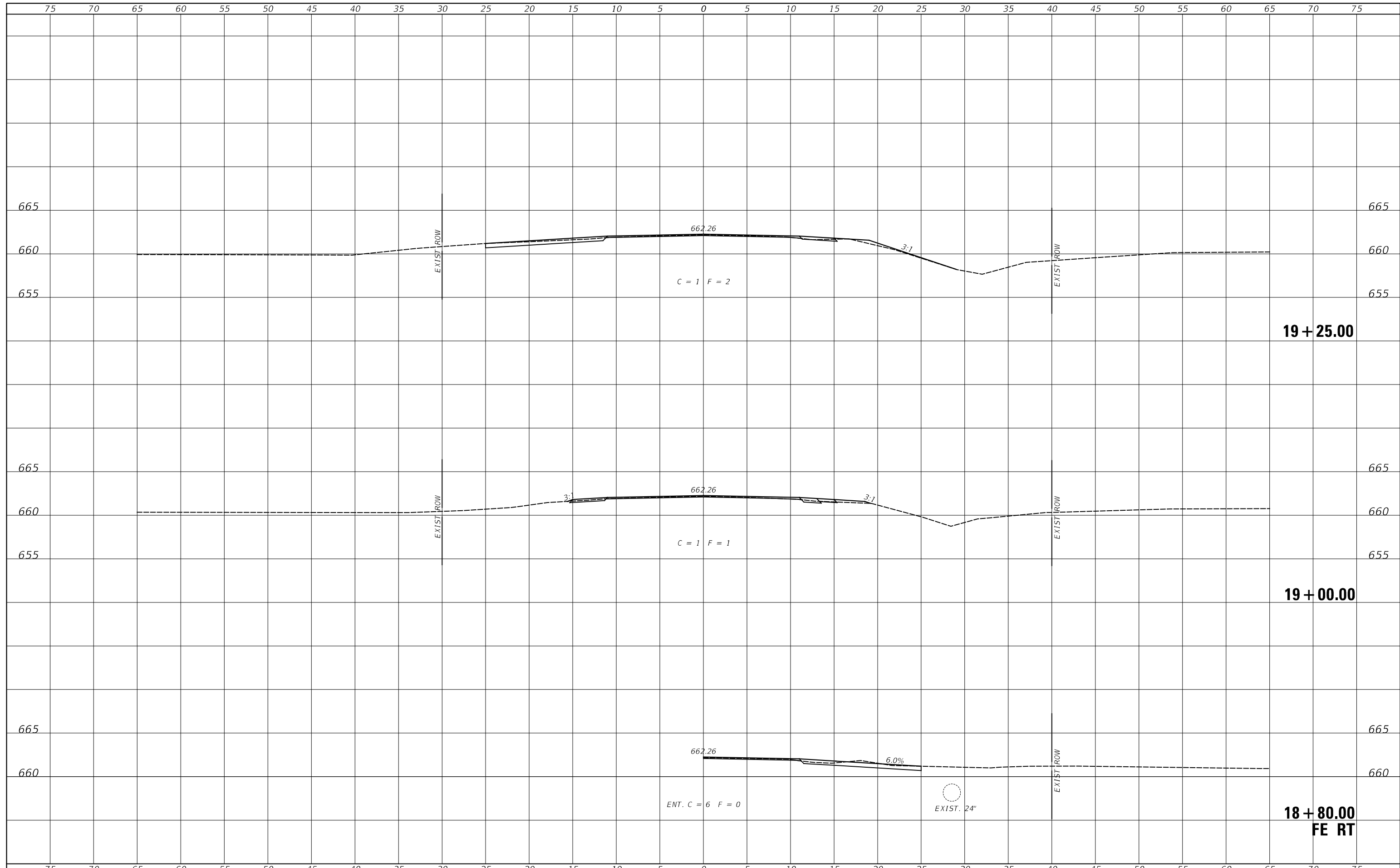
Groundwater Data: Ststic water level after auger removal - Elevation 653.5.
Comments:

SOIL BORING LOGS
BUREAU COUNTY
SECTION 12-00241-00-BR
COUNTY HIGHWAY 24 OVER
BRANCH OF POND CREEK

SHEET NO. 12	F.A.S. RTE.	SECTION	COUNTY	TOTAL SHEETS	SHEET NO.
	1246	12-00241-00-BR	BUREAU	23	18
12 SHEETS	S.N. 006-3104		CONTRACT NO. 87764		
FED. ROAD DIST. NO. 7 ILLINOIS			FED. AID PROJECT NO. S43W(369)		

FINAL SURVEY NO.	SURVEYED	DATE
NOTE BOOK	PLOTTED	
	TEMPLATE	
	AREAS CHECKED	

ORIGINAL SURVEY NO.	SURVEYED	DATE
NOTE BOOK	PLOTTED	
	TEMPLATE	
	AREAS CHECKED	

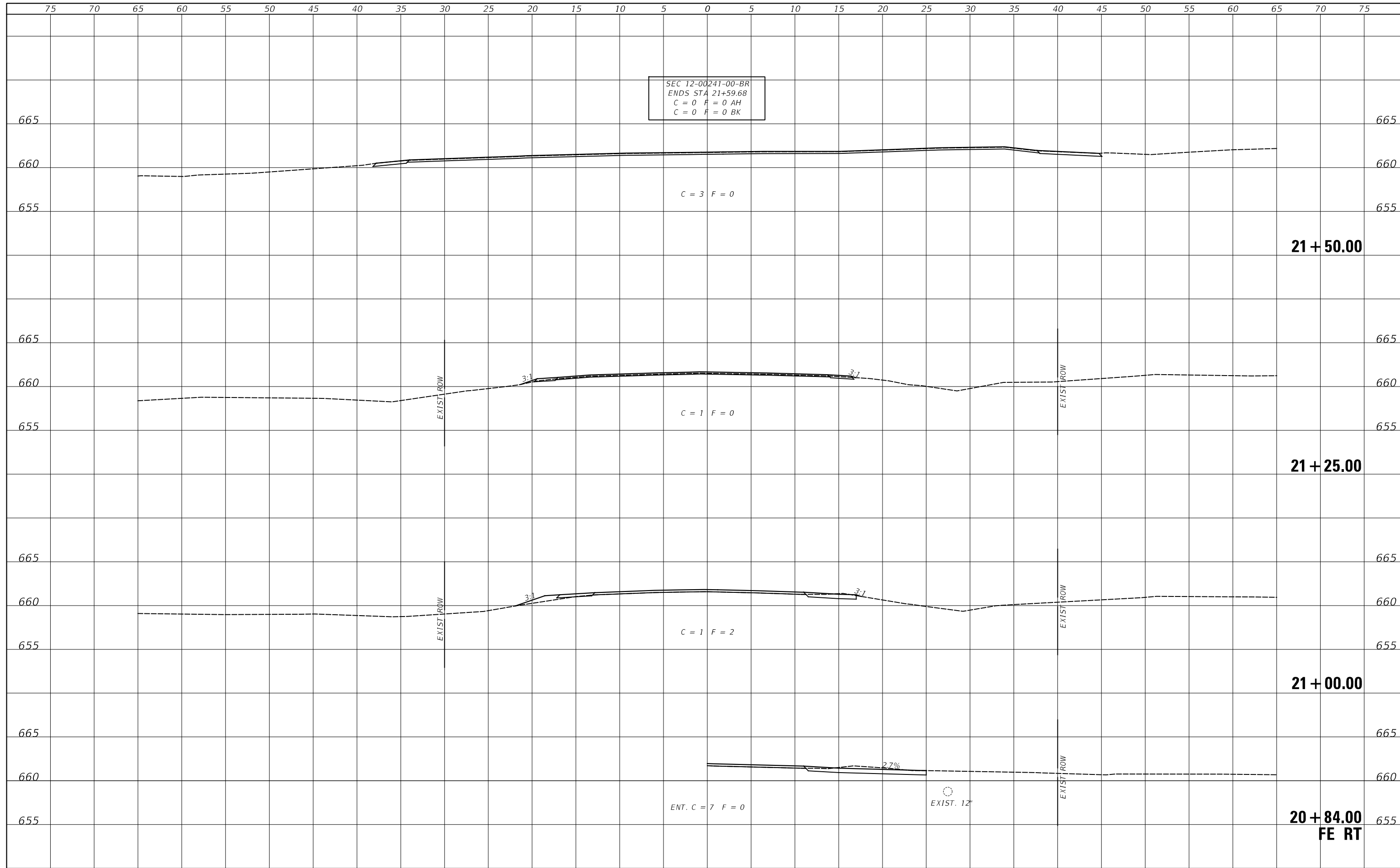


FILE NAME = V:\3547 - CH 24 over Branch of Pond Creek (Bureau)\Updated Plans - December 2020\3547xshs.dgn	USER NAME = smierzwa	DESIGNED - S.T.M.	REVISED -	BUREAU COUNTY COUNTY HIGHWAY 24 OVER BRANCH OF POND CREEK	CROSS SECTIONS				F.A.S. RTE. 1246	SECTION 12-00241-00-BR	COUNTY BUREAU	TOTAL SHEETS 23	SHEET NO. 20
SMODELNAMES	PLOT SCALE = 10.0000 ' / in.	CHECKED - S.T.M.	REVISED -		SCALE: 1"=5'	SHEET 2	OF 5 SHEETS	STA. 18+80.00	TO STA. 19+25.00	CONTRACT NO. 87764			
	PLOT DATE = 2/14/2021	DATE - 2/14/2021	REVISED -		FED. ROAD DIST. NO. 7 ILLINOIS FED. AID PROJECT NO. 543W(369)								

DATE	
BY	
SURVEYED	
PLOTTED	
TEMPLATE	
AREAS	
CHECKED	
FINAL SURVEY	
NOTE BOOK	
NO.	

DATE	
BY	
SURVEYED	
PLOTTED	
TEMPLATE	
AREAS	
CHECKED	
ORIGINAL SURVEY	
NOTE BOOK	
NO.	

SEC 12-00241-00-BR
 ENDS STA 21+59.68
 C = 0 F = 0 AH
 C = 0 F = 0 BK



FILE NAME =	USER NAME = smierzwa	DESIGNED - S.T.M.	REVISED -	BUREAU COUNTY COUNTY HIGHWAY 24 OVER BRANCH OF POND CREEK	CROSS SECTIONS			F.A.S. RTE.	SECTION	COUNTY	TOTAL SHEETS	SHEET NO.
V:\3547 - CH 24 over Branch of Pond Creek (Bureau)\Updated Plans - December 2020\3547xshs.dgn	DRAWN - M.M.O.	REVISED -	1246					12-00241-00-BR	BUREAU	23	23	
PLOT SCALE = 10.0000 ' / in.	CHECKED - S.T.M.	REVISED -	CONTRACT NO. 87764									
PLOT DATE = 2/14/2021	DATE - 2/14/2021	REVISED -	SCALE: 1"=5'		SHEET 5	OF 5 SHEETS	STA. 20+84.00	TO STA. 21+50.00	FED. ROAD DIST. NO. 7	ILLINOIS	FED. AID PROJECT NO. 543W(369)	