

STATE OF ILLINOIS
DEPARTMENT OF TRANSPORTATION

F.A.P. RTE.	SECTION	COUNTY	TOTAL SHEETS	SHEET NO.
377	2003-065N	COOK	220	1
ILLINOIS CONTRACT NO. 62633			* 220 + 1 = 221 TOTAL SHEETS	

FOR INDEX OF SHEETS, SEE SHEET NO. 2

FOR LIST OF HIGHWAY STANDARDS, SEE SHEET NO. 2

IMPROVEMENTS ARE LOCATED IN THE VILLAGE OF SKOKIE.

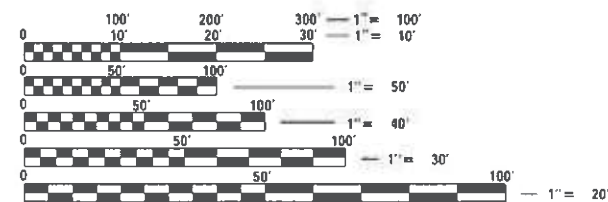
PROPOSED HIGHWAY PLANS

FAP ROUTE 377 (IL 58 / DEMPSTER ST)
AT NILES CENTER RD & US 41 (SKOKIE BLVD)
SECTION 2003-065N
PROJECT NHPP UH3S(286)
INTERSECTION IMPROVEMENT
COOK COUNTY

TRAFFIC DATA - IL 58 (DEMPSTER ST)
FUNCTIONAL CLASSIFICATION: PRINCIPAL ARTERIAL
2017 ADT = 31600
P.V. = 93.97% S.U. = 4.50% M.U. = 1.53%
POSTED SPEED = 35 MPH
DESIGN SPEED = 40 MPH

TRAFFIC DATA - NILES CENTER RD
FUNCTIONAL CLASSIFICATION: MAJOR COLLECTOR
2017 ADT = 7650
P.V. = N/A S.U. = N/A M.U. = N/A
POSTED SPEED = 30 MPH
DESIGN SPEED = 30 MPH

TRAFFIC DATA - US 41 (SKOKIE BLVD)
FUNCTIONAL CLASSIFICATION: PRINCIPAL ARTERIAL
2017 ADT = 22400
P.V. = 96.69% S.U. = 2.93% M.U. = 0.38%
POSTED SPEED = 35 MPH
DESIGN SPEED = 40 MPH



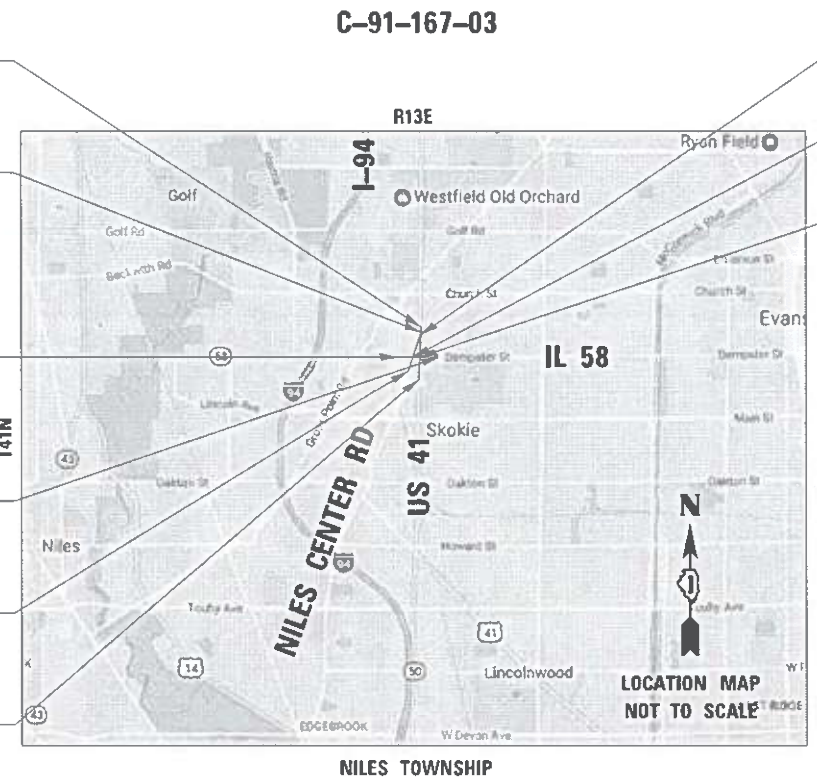
FULL SIZE PLANS HAVE BEEN PREPARED USING STANDARD ENGINEERING SCALES. REDUCED SIZED PLANS WILL NOT CONFORM TO STANDARD SCALES. IN MAKING MEASUREMENTS ON REDUCED PLANS, THE ABOVE SCALES MAY BE USED.

J.U.L.I.E.
JOINT UTILITY LOCATION INFORMATION FOR EXCAVATION
1-800-892-0123
OR 811

PROJECT ENGINEER: KARI SMITH, PE (847) 705-4437
PROJECT MANAGER: FAWAD AQUEEL, PE (847) 705-4247

CONTRACT NO. 62633

- END US 41 IMPROVEMENT
29 + 37.93
- END NCR IMPROVEMENT
122 + 81.91
- BEGIN IL 58 IMPROVEMENT
34 + 91.16
- END IL 58 IMPROVEMENT
49 + 37.34
- BEGIN NCR IMPROVEMENT
109 + 39.01
- BEGIN US 41 IMPROVEMENT
13 + 35.86



GROSS LENGTH IL 58 = 1446.00 FT. = 0.274 MILE
NET LENGTH IL 58 = 1446.00 FT. = 0.274 MILE
GROSS LENGTH NCR = 1342.90 FT. = 0.254 MILE
NET LENGTH NCR = 1342.90 FT. = 0.254 MILE
GROSS LENGTH US 41 = 1602.07 FT. = 0.303 MILE
NET LENGTH US 41 = 1602.07 FT. = 0.303 MILE

- STA. 119 + 41.46 NCR
- STA. 24 + 92.20 US 41
- STA. 40 + 49.04 IL-58
- STA. 113 + 47.68 NCR
- STA. 19 + 60.42 US 41
- STA. 43 + 16.21 IL-58

RYAN GALL
062-064397
LICENSED PROFESSIONAL ENGINEER OF ILLINOIS

Signed: *[Signature]*
Date: 01/20/2021
License Expires: 11/30/2021
The seal shown above is valid for Sheets 01-74, 90-144, 196-220.

DAVID W. BLOCK
062-050966
Licensed Professional Engineer of ILLINOIS

Signed: *[Signature]*
Date: 01/22/2021
License Expires: 11/30/2021
The seal shown above is valid for Sheets 75-76, 169-189



EFK Moen
Civil Engineering Design

STATE OF ILLINOIS
DEPARTMENT OF TRANSPORTATION

SUBMITTED January 21, 2021

[Signature]
REGIONAL ENGINEER

March 19, 2021

[Signature]
ENGINEER OF DESIGN AND ENVIRONMENT

March 19, 2021

[Signature]
DIRECTOR OF HIGHWAYS PROJECT IMPLEMENTATION

PRINTED BY THE AUTHORITY
OF THE STATE OF ILLINOIS

INDEX OF SHEETS

- 1 COVER SHEET
- 2 INDEX OF SHEETS AND HIGHWAY STANDARDS
- 3-5 GENERAL NOTES
- 6-22 SUMMARY OF QUANTITIES
- 23-29 TYPICAL SECTIONS
- 30 SCHEDULES OF QUANTITIES
- 31-32 ALIGNMENT, TIES, AND BENCHMARKS
- 33-34 ROADWAY REMOVAL PLANS
- 35-36 ROADWAY PLANS
- 37-60 SUGGESTED STAGES OF CONSTRUCTION AND TRAFFIC CONTROL PLANS
- 61-63 EROSION AND SEDIMENT CONTROL PLANS
- 64-74 DRAINAGE AND UTILITY PLANS AND PROFILES
- 75A-75-76 WATER MAIN PLANS
- 77-81 SUE PLANS
- 82-89 PLAT OF HIGHWAYS
- 90-101 INTERSECTION DETAILS AND ELEVATIONS
- 102-129 PEDESTRIAN RAMP IMPROVEMENT DETAILS
- 130-131 PAVEMENT MARKING PLANS
- 132-134 LANDSCAPING PLANS
- 135-144 SIGNING PLANS
- 145-168 TRAFFIC SIGNAL DETAILS
- 169-189 LIGHTING DETAILS
- 190-195 SOIL BORING LOGS
- 196 BD01-DRIVEWAY DETAILS
- 197 BD07-DETAIL OF STORM SEWER CONNECTION TO EXISTING SEWER
- 198 BD08-DETAILS FOR FRAMES AND LIDS ADJUSTMENT WITH MILLING
- 199 BD22-PAVEMENT PATCHING FOR HMA SURFACED PAVEMENT
- 200 BD24-CURB OR CURB AND GUTTER REMOVAL AND REPLACEMENT
- 201 BD32-BUTT JOINTS AND HMA TAPER
- 202 BD36-FIRE HYDRANT TO BE MOVED DETAILS
- 203 TC10-TRAFFIC CONTROL AND PROTECTION FOR SIDE ROADS, INTERSECTIONS, AND DRIVEWAYS
- 204 TC11-RAISED REFLECTIVE PAVEMENT MARKINGS (SNOW-PLOW RESISTANT)
- 205 TC13-DISTRICT ONE TYPICAL PAVEMENT MARKINGS
- 206 TC14-TRAFFIC CONTROL AND PROTECTION AT TURN BAYS (TO REMAIN OPEN TO TRAFFIC)
- 207 TC16-SHORT TERM PAVEMENT MARKING LETTERS AND SYMBOLS
- 208 TC22-ARTERIAL ROAD INFORMATION SIGN
- 209 TC26-DRIVEWAY ENTRANCE SIGNING
- 210-220 CROSS SECTIONS

LIST OF ILLINOIS DOT HIGHWAY STANDARDS

- 000001-08 STANDARD SYMBOLS, ABBREVIATIONS AND PATTERNS
- 280001-07 TEMPORARY EROSION CONTROL SYSTEMS
- 424001-11 PERPENDICULAR CURB RAMPS FOR SIDEWALKS
- 424011-04 CORNER PARALLEL CURB RAMPS FOR SIDEWALKS
- 424021-06 DEPRESSED CORNER FOR SIDEWALKS
- 424026-03 ENTRANCE / ALLEY PEDESTRIAN CROSSINGS
- 424031-02 MEDIAN PEDESTRIAN CROSSINGS
- 442201-03 CLASS C AND D PATCHES
- 601001-05 PIPE UNDERDRAINS
- 602001-02 CATCH BASIN, TYPE A
- 602011-02 CATCH BASIN, TYPE C
- 602401-07 PRECAST MANHOLE TYPE A 4' DIAMETER
- 602402-03 PRECAST MANHOLE TYPE A 5' DIAMETER
- 602406-11 PRECAST MANHOLE TYPE A 6' DIAMETER
- 602601-06 PRECAST REINFORCED CONCRETE FLAT SLAB TOP
- 602701-02 MANHOLE STEPS
- 604001-05 FRAME AND LIDS, TYPE 1
- 604086-05 FRAME AND GRATE, TYPE 23
- 606001-07 CONCRETE CURB TYPE B AND COMBINATION CONCRETE CURB AND GUTTER
- 606301-04 PC CONCRETE ISLANDS AND MEDIANS
- 701006-05 OFF-RD OPERATIONS, 2L, 2W, 15' TO 24" FROM PAVEMENT EDGE
- 701011-04 OFF-RD MOVING OPERATIONS, 2L, 2W, DAY ONLY
- 701101-05 OFF-RD OPERATIONS, MULTILINE, 15' TO 24" FROM PAVEMENT EDGE
- 701301-04 LANE CLOSURE, 2L, 2W, SHORT TIME OPERATIONS
- 701311-03 LANE CLOSURE, 2L, 2W, MOVING OPERATIONS - DAY ONLY
- 701427-05 LANE CLOSURE, MULTILANE, INTERMITTENT OR MOVING OPERATION, FOR SPEEDS = 40 MPH
- 701501-06 URBAN LANE CLOSURE, 2L, 2W, UNDIVIDED
- 701601-09 URBAN LANE CLOSURE, MULTILANE, 1W OR 2W WITH NONTRAVERSABLE MEDIAN
- 701606-10 URBAN SINGLE LANE CLOSURE, MULTILANE, 2W WITH MOUNTABLE MEDIAN
- 701701-10 URBAN LANE CLOSURE, MULTILANE INTERSECTION
- 701801-06 SIDEWALK, CORNER OR CROSSWALK CLOSURE
- 701901-08 TRAFFIC CONTROL DEVICES
- 720001-01 SIGN PANEL MOUNTING DETAILS
- 720006-04 SIGN PANEL ERECTION DETAILS
- 720011-01 METAL POSTS FOR SIGNS, MARKERS AND DELINEATORS
- 720016-04 MAST ARM MOUNTER STREET NAME SIGNS
- 728001-01 TELESCOPING STEEL SIGN SUPPORT
- 729001-01 APPLICATIONS OF TYPES A AND B METAL POSTS (FOR SIGN & MARKERS)
- 780001-05 TYPICAL PAVEMENT MARKINGS
- 781001-04 TYPICAL APPLICATIONS RAISED REFLECTIVE PAVEMENT MARKERS
- 782001-01 CURB REFLECTORS
- 814001-03 HANDHOLES
- 814006-03 DOUBLE HANDHOLES
- 821101-02 LUMINAIRE WIRING IN POLE
- 830026-01 TEMPORARY ROADWAY LIGHTING
- 857001-01 STANDARD PHASE DESIGNATION DIAGRAMS AND PHASE SEQUENCES
- 862001-01 UNINTERRUPTABLE POWER SUPPLY (UPS)
- 873001-02 TRAFFIC SIGNAL GROUNDING & BONDING
- 877001-08 STEEL MAST ARM ASSEMBLY AND POLE 16' THROUGH 55'
- 878001-11 CONCRETE FOUNDATION DETAILS
- 880001-01 SPAN WIRE MOUNTED SIGNALS AND FLASHING BEACON INSTALLATION
- 880006-01 TRAFFIC SIGNAL MOUNTING DETAILS
- 886001-01 DETECTOR LOOP INSTALLATIONS

D:\cadd\17002\03\DDT\01\W03_IL_58.ctb and IL_41\DDN\Design\Pre\im\Plot\sheet\0162633.sht:genote-01.dgn

REVISED SHEET 4-9-2021

REV-SEP

USER NAME = RG011	DESIGNED - RG	REVISED -
	DRAWN - RG	REVISED -
PL0 BC AE = 2.0000' / in.	CHECKED - JH	REVISED -
PL0 DATE/EDA = 1/28/2021	DATE - 02/28/2020	REVISED -

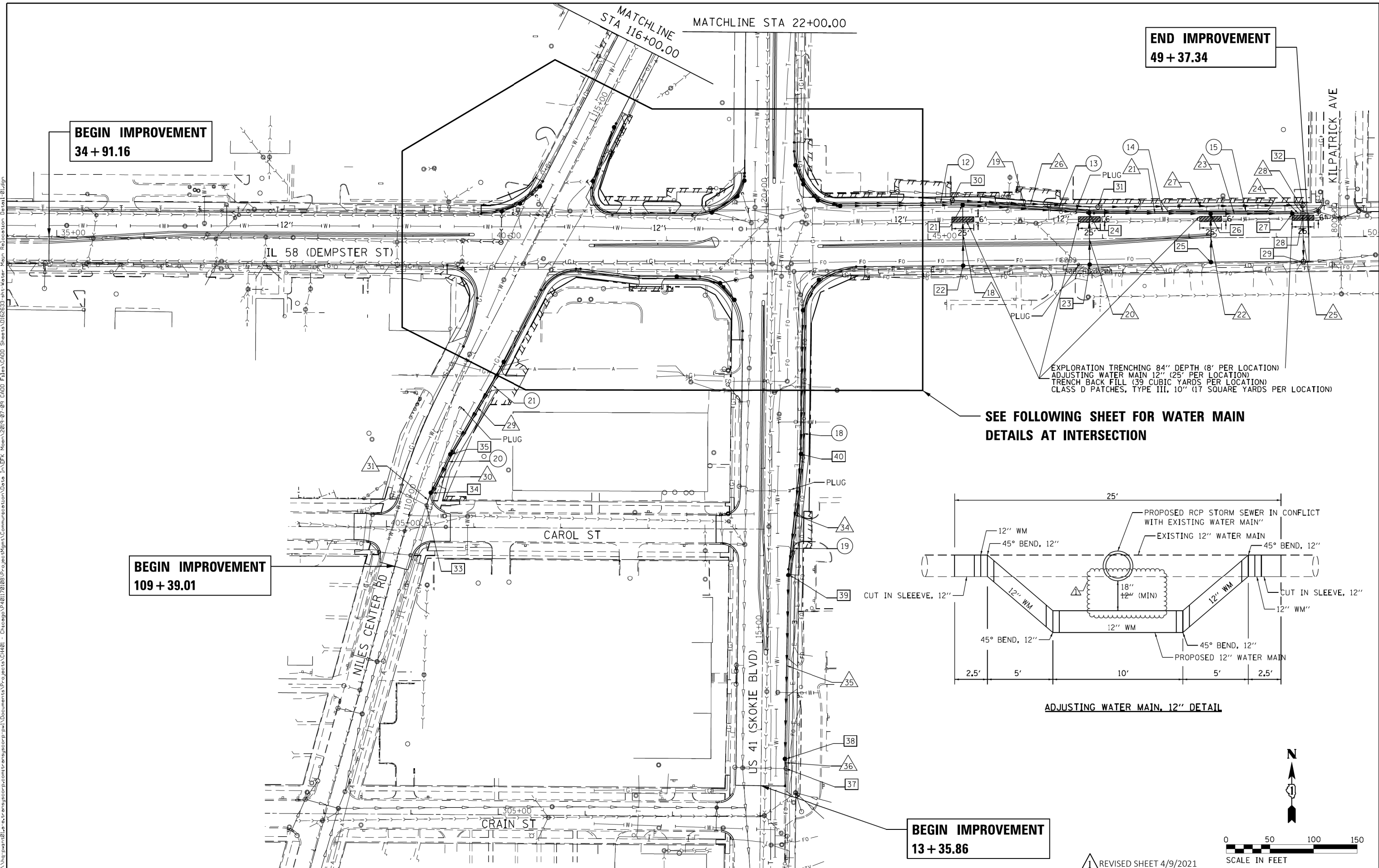
**STATE OF ILLINOIS
DEPARTMENT OF TRANSPORTATION**

**IL 58 (DEMPSTER ST) AT NILES CENTER RD & US 41 (SKOKIE BLVD)
INDEX OF SHEETS AND HIGHWAY STANDARDS**

SCALE: N.O. SCALE SHEET OF SHEETS STA. TO STA.

F.M.P. RTE. 377	SECTION 2003-065N	COUNTY COOK	TOTAL SHEETS 220	SHEET NO. 2
			CONTRACT NO. 62633	
ILLINOIS FED. AID P. PROJECT				

MODELNAME = ...
 FILE NAME = ...
 ...



END IMPROVEMENT
49 + 37.34

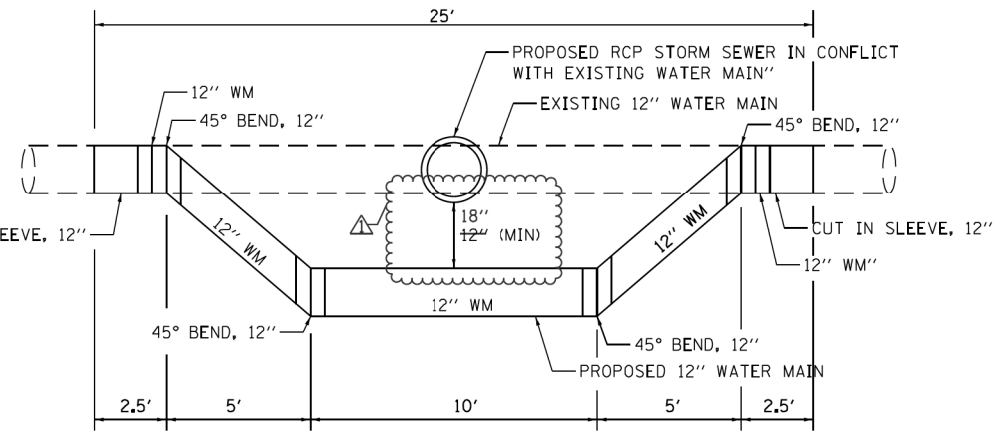
BEGIN IMPROVEMENT
34 + 91.16

BEGIN IMPROVEMENT
109 + 39.01

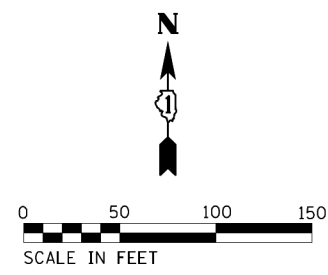
BEGIN IMPROVEMENT
13 + 35.86

EXPLORATION TRENCHING 84" DEPTH (8' PER LOCATION)
 ADJUSTING WATER MAIN 12" (25' PER LOCATION)
 TRENCH BACK FILL (39 CUBIC YARDS PER LOCATION)
 CLASS D PATCHES, TYPE III, 10" (17 SQUARE YARDS PER LOCATION)

**SEE FOLLOWING SHEET FOR WATER MAIN
 DETAILS AT INTERSECTION**



ADJUSTING WATER MAIN, 12" DETAIL



REVISD SHEET 4/9/2021

USER NAME = Mibeering	DESIGNED - RG	REVISED - 3/01/2021 DWB
	DRAWN - RG	REVISED -
PLOT SCALE = *SCALE*	CHECKED - JH	REVISED -
PLOT DATE = 3/1/2021	DATE - \$PLANDATE\$	REVISED -

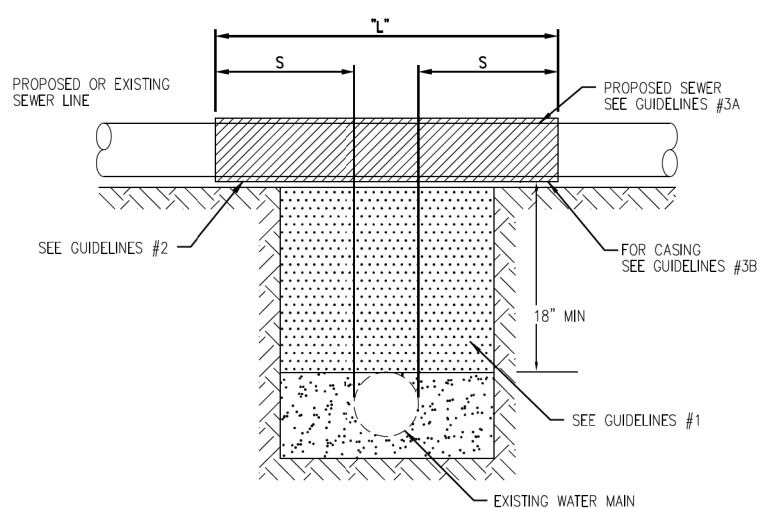
**STATE OF ILLINOIS
 DEPARTMENT OF TRANSPORTATION**

**IL 58 (DEMPSTER ST) AT NILES CENTER RD & US 41 (SKOKIE BLVD)
 WATER MAIN RELOCATION DETAILS**

SCALE: 1" = 50' SHEET 1 OF 2 SHEETS STA. TO STA.

F.A.P. RTE. 377	SECTION 2003-065N	COUNTY COOK	TOTAL SHEETS 220	SHEET NO. 75
CONTRACT NO. 62633				
ILLINOIS FED. AID PROJECT				

PROPOSED SEWER LINE WITH 18" MINIMUM VERTICAL SEPARATION ABOVE EXISTING WATER MAIN



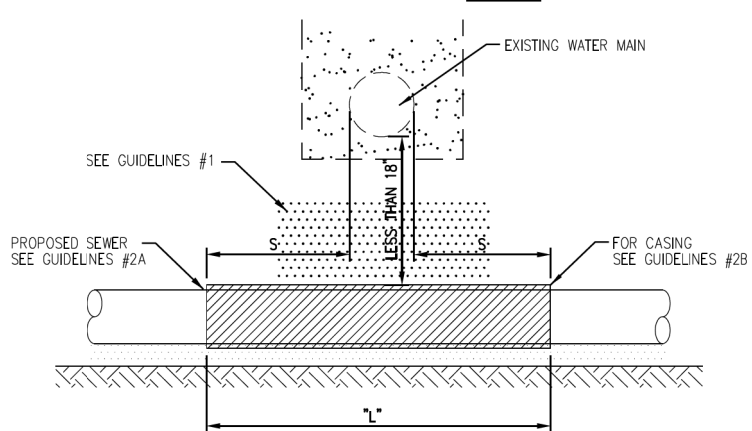
GUIDELINES

1. IF SELECT GRANULAR BACKFILL EXISTS: REMOVE WITHIN WIDTH OF PROPOSED SEWER TRENCH AND REPLACE WITH SELECT EXCAVATED MATERIAL (CLASS IV) AND COMPACT
2. OMIT SELECT GRANULAR EMBEDMENT AND GRANULAR BACKFILL TO ONE (1) FOOT OVER TOP OF SEWER AND USE SELECT EXCAVATED MATERIAL (CLASS IV) AND COMPACT THE LENGTH OF "L" FEET.
3. A) CONSTRUCT "L" FEET OF PROPOSED SEWER OF WATER MAIN MATERIAL AND PRESSURE TEST, OR;
B) USE "L" FEET OF WATER MAIN MATERIAL FOR CASING OF PROPOSED SEWER AND SEAL ENDS OF CASING.

NOTE: "S" THE LENGTH NECESSARY TO PROVIDE 10 FEET OF SEPARATION AS MEASURED PERPENDICULAR TO THE EXISTING WATER MAIN

*BASED ON STANDARD SPECIFICATIONS FOR WATER AND SEWER MAIN CONSTRUCTION IN ILLINOIS.

PROPOSED SEWER LINE BELOW EXISTING WATER MAIN WITH LESS THAN 18" MINIMUM VERTICAL SEPARATION



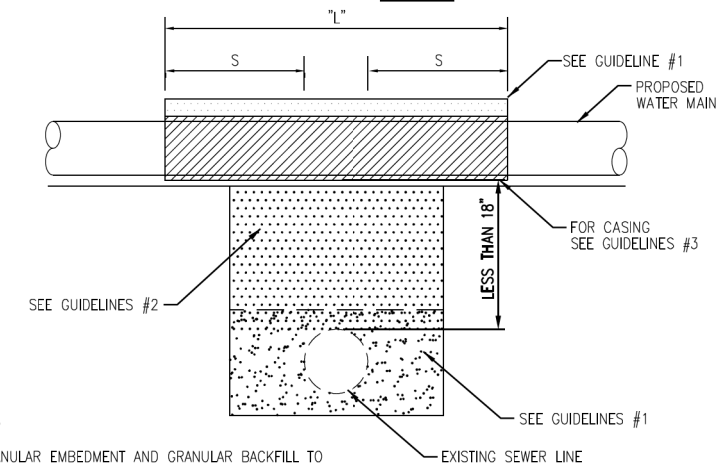
GUIDELINES

1. OMIT SELECT GRANULAR EMBEDMENT AND GRANULAR BACKFILL TO ONE (1) FOOT OVER TOP OF SEWER AND USE SELECT EXCAVATED MATERIAL (CLASS IV) AND COMPACT FOR "S" FEET ON EACH SIDE OF WATER MAIN.
2. A) CONSTRUCT "L" FEET OF PROPOSED SEWER OF WATER MAIN MATERIAL AND PRESSURE TEST, OR;
B) USE "L" FEET OF WATER MAIN MATERIAL FOR CASING OF PROPOSED SEWER AND SEAL ENDS OF CASING.
3. PROVIDE ADEQUATE SUPPORT FOR EXISTING WATER MAIN TO PREVENT DAMAGE DUE TO SETTLEMENT OF SEWER TRENCH

NOTE: "S" THE LENGTH NECESSARY TO PROVIDE 10 FEET OF SEPARATION AS MEASURED PERPENDICULAR TO THE EXISTING WATER MAIN

*BASED ON STANDARD SPECIFICATIONS FOR WATER AND SEWER MAIN CONSTRUCTION IN ILLINOIS.

PROPOSED WATER MAIN ABOVE EXISTING SEWER LINE WITH LESS THAN 18" VERTICAL SEPARATION



GUIDELINES

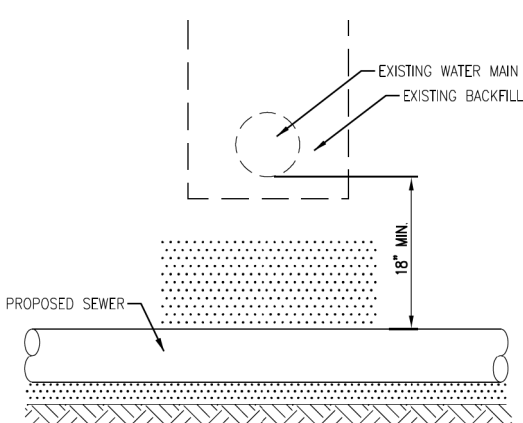
1. OMIT SELECT GRANULAR EMBEDMENT AND GRANULAR BACKFILL TO ONE (1) FOOT OVER TOP OF WATER MAIN AND USE SELECT EXCAVATED MATERIAL (CLASS IV) AND COMPACT THE LENGTH OF "L".
2. IF SELECT GRANULAR BACKFILL EXISTS, REMOVE WITHIN WIDTH OF EXISTING SEWER LINE TRENCH AND REPLACE WITH SELECT EXCAVATED MATERIAL (CLASS IV) AND COMPACT.
3. USE "L" FEET OF WATER MAIN MATERIAL FOR CASING OF PROPOSED WATER MAIN AND SEAL ENDS OF CASING.
4. POINT LOADS SHALL NOT BE ALLOWED BETWEEN WATER MAIN CASING AND SEWER

NOTE: "S" THE LENGTH NECESSARY TO PROVIDE 10 FEET OF SEPARATION AS MEASURED PERPENDICULAR TO THE EXISTING SEWER LINE.

*BASED ON STANDARD SPECIFICATIONS FOR WATER AND SEWER MAIN CONSTRUCTION IN ILLINOIS.

PER IEPA, WHEN PROPOSED SEWER (OR WATER) IS LOCATED 10 FEET OR MORE FROM EXISTING WATER (OR SEWER), NO SPECIAL CONSTRUCTION REQUIRED

PROPOSED SEWER LINE BELOW EXISTING WATER MAIN WITH 18" MINIMUM VERTICAL SEPARATION

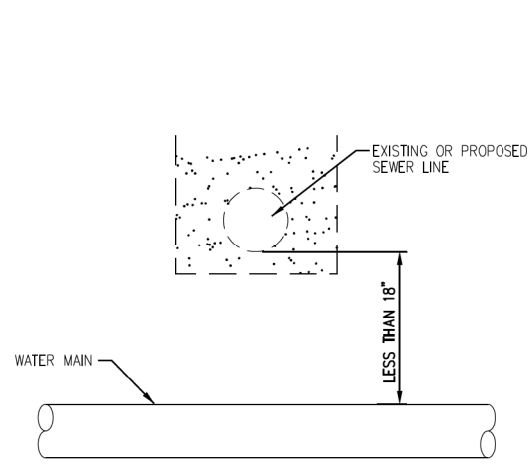


GUIDELINES

1. PROVIDE ADEQUATE SUPPORT FOR EXISTING WATER MAIN TO PREVENT DAMAGE DUE TO SETTLEMENT OF SEWER TRENCH.

*BASED ON STANDARD SPECIFICATIONS FOR WATER AND SEWER MAIN CONSTRUCTION IN ILLINOIS.

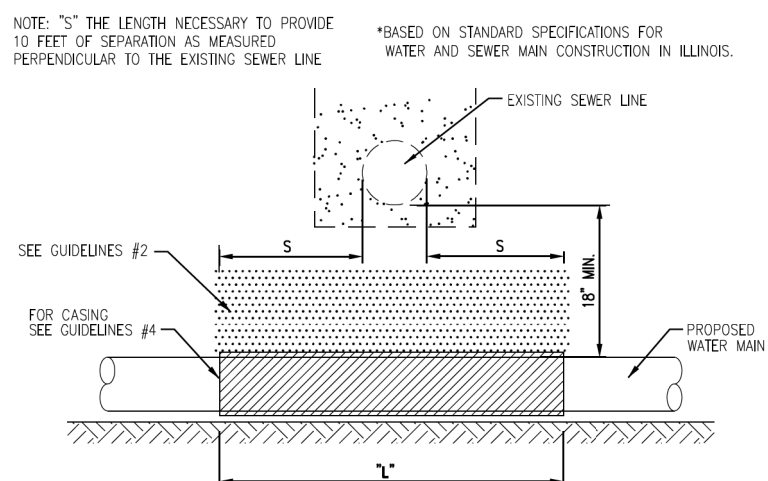
PLACEMENT OF WATER MAIN BELOW EXISTING OR PROPOSED SEWER LINE WITH LESS THAN 18" MINIMUM VERTICAL SEPARATION. NOT ALLOWED.



NOT ALLOWED* MUST MAINTAIN 18" VERTICAL SEPARATION

*BASED ON STANDARD SPECIFICATIONS FOR WATER AND SEWER MAIN CONSTRUCTION IN ILLINOIS.

PROPOSED WATER MAIN BELOW EXISTING SEWER LINE WITH 18" MINIMUM VERTICAL SEPARATION

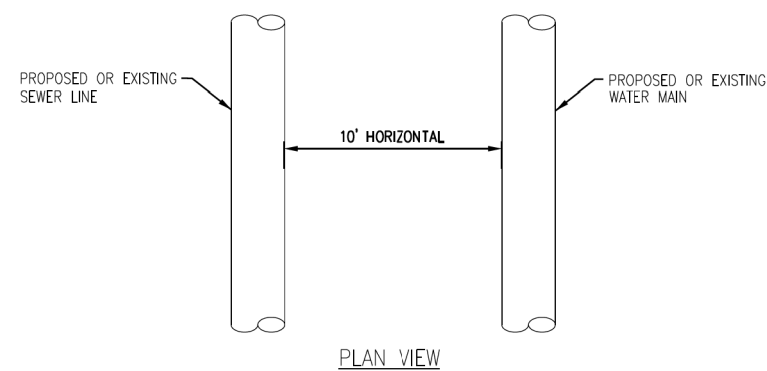


GUIDELINES

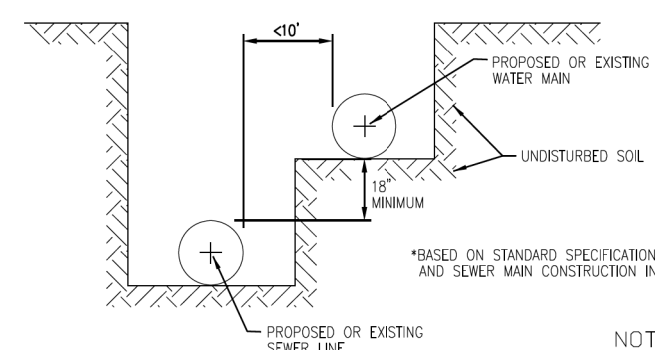
1. OMIT SELECT GRANULAR EMBEDMENT AND GRANULAR BACKFILL TO ONE (1) FOOT OVER TOP OF WATER MAIN AND USE SELECT EXCAVATED MATERIAL (CLASS IV) AND COMPACT THE LENGTH OF "L".
2. IF SELECT GRANULAR BACKFILL EXISTS, REMOVE WITHIN WIDTH OF EXISTING SEWER LINE TRENCH AND REPLACE WITH SELECT EXCAVATED MATERIAL (CLASS IV) AND COMPACT.
3. PROVIDE ADEQUATE SUPPORT FOR EXISTING SEWER LINE TO PREVENT DAMAGE DUE TO SETTLEMENT.
4. USE "L" FEET OF WATER MAIN MATERIAL FOR CASING OF PROPOSED WATER MAIN AND SEAL ENDS OF CASING.

NOTE: "S" THE LENGTH NECESSARY TO PROVIDE 10 FEET OF SEPARATION AS MEASURED PERPENDICULAR TO THE EXISTING SEWER LINE

*BASED ON STANDARD SPECIFICATIONS FOR WATER AND SEWER MAIN CONSTRUCTION IN ILLINOIS.



PER IEPA, WHEN PROPOSED SEWER (OR WATER) IS LOCATED LESS THAN 10 FEET FROM EXISTING WATER (OR SEWER), DETAILS BELOW SHALL APPLY



*BASED ON STANDARD SPECIFICATIONS FOR WATER AND SEWER MAIN CONSTRUCTION IN ILLINOIS.

NOT TO SCALE

TECHNICAL GUIDANCE MANUAL

WATER AND SEWER SEPARATION REQUIREMENTS (PER IEPA)



7/1/15

STD. DWG. NO. 41

PAGE NO. 42

ENTIRE SHEET ADDED

ENTIRE SHEET ADDED

USER NAME = RG011	DESIGNED - RG	REVISED - 03/18/2021 RG
DRAWN - RG	REVISIONS -	
PLOT SCALE = 2.0000' / in.	CHECKED - JH	REVISIONS -
PLOT DATE = 4/9/2021	DATE - 02/28/2020	REVISIONS -

STATE OF ILLINOIS
DEPARTMENT OF TRANSPORTATION

IL 58 (DEMPSTER ST) AT NILES CENTER RD & US 41 (SKOKIE BLVD)
MWRD DETAILS

SCALE: NO SCALE SHEET OF SHEETS STA. TO STA.

F.A.P. RTE.	SECTION	COUNTY	TOTAL SHEETS	SHEET NO.
377	2003-065N	COOK	220	76A
CONTRACT NO. 62633				
ILLINOIS FED. AID PROJECT				

D:\p1\17002\03_100T_D1_M03_IL_58_at_NSC_and_IL_41\DDA\Design\Prelim\PlotSheets\0162633-sht-detail-MWRD-01.dgn
 FILE NAME = Z:\17002\03_100T_D1_M03_IL_58_at_NSC_and_IL_41\DDA\Design\Prelim\PlotSheets\0162633-sht-detail-MWRD-01.dgn