

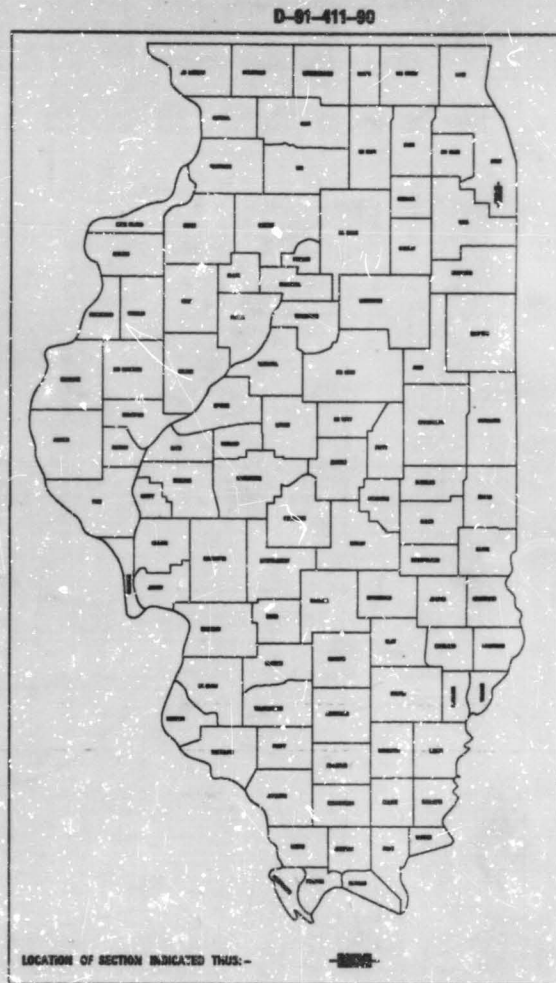
F.A.I. RTE	SECTION	COUNTY	TOTAL SHEETS	SHEET NO.
57	*	COOK	380	1

\*0104-1021, 0405-1023K, 0507-1025HBK, 0709-1027K)RS-1  
 (0303-1002VB, 0304-1003VB, 0507-1025HBK, 0707  
 [1010HB, 1011HB, 1012HB, 1013])R & 0101-1000HB-BR

**STATE OF ILLINOIS**  
**DEPARTMENT OF TRANSPORTATION**  
**DIVISION OF HIGHWAYS**  
**PLANS FOR PROPOSED**  
**FEDERAL AID HIGHWAY**

FOR INDEX OF SHEETS, SEE SHEET NO. 2

**F.A.I. ROUTE 57 (WILL COUNTY LINE TO F.A.I. 80)**  
**SECTION: (0104-1021, 0405-1023K, 0507-1025HBK, 0709-1027K)RS-1**  
**(0303-1002VB, 0304-1003VB, 0507-1025HBK, 0707**  
**[1010HB, 1011HB, 1012HB, 1013])R & 0101-1000HB-BR**  
**RESURFACING, RAMP REALIGNMENT AND BRIDGE REHABILITATION**  
**PROJECT: ACIM-57-7(253)338**  
**COOK COUNTY**  
**C-91-411-90**



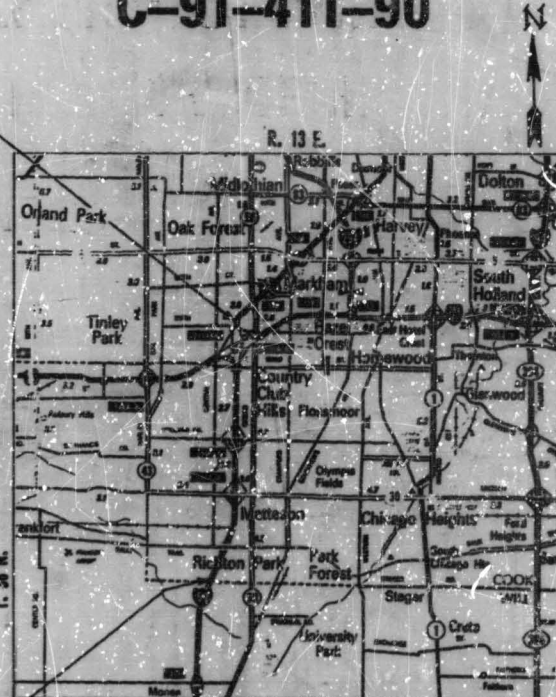
PROJECT LOCATED IN MUNICIPALITIES OF:  
 MATTESON & COUNTRY CLUB HILLS

PLAN PREPARATION ENGINEER MICHAEL DE YONG / L. PIZARRO (708) 705-4432

**TRAFFIC DATA**  
 1990 ADT - 5900  
 SPEED LIMIT - 65 MPH

**BRIDGE SCOPE OF WORK:**  
 REMOVAL OF CONCRETE DECK, SLOPE WALL REPAIR, FURNISHING AND  
 ERECTING STRUCTURAL STEEL BRIDGE DECK, GROUTING CONCRETE  
 STRUCTURES, CONCRETE SUPERSTRUCTURE REMOVAL AND REPLACEMENT  
 OF RELINGS, BRIDGE DECK MICROSEGA OVERLAY, CLEANING AND  
 PAINTING OF STEEL BRIDGE, AND REMOVAL AND REPLACEMENT OF  
 BRIDGE APPROACH PAVEMENT.

- LIST OF STRUCTURES:**
- STRUCT. NO. 016-1006 STEEPER RD. OVER F.A.I. 57 - STA. 28+26.25
  - STRUCT. NO. 016-0840 S.R. F.A.I. 57 OVER E.I. & E.R.R. - STA. 111+77.3
  - STRUCT. NO. 016-0841 S.R. F.A.I. 57 OVER E.I. & E.R.R. - STA. 111+77.3
  - STRUCT. NO. 016-0861 N.R. F.A.I. 57 OVER N.Y.C.R.R. - STA. 131+43.4
  - STRUCT. NO. 016-9986 S.R. F.A.I. 57 OVER N.Y.C.R.R. - STA. 132+48.4
  - STRUCT. NO. 016-0893 N.R. F.A.I. 57 OVER F.A.I. 63 E.R. - STA. 380+45
  - STRUCT. NO. 016-6882 S.R. F.A.I. 57 OVER F.A.I. 80 E.R. - STA. 375+94.2
  - STRUCT. NO. 016-0288 N.R. F.A.I. 57 OVER F.A.I. 80 W.B. - STA. 387+24.5
  - STRUCT. NO. 016-0827 S.R. F.A.I. 57 OVER F.A.I. 80 W.B. - STA. 387+78.2



**PROJECT ENDS**  
 STATION 414+70.5 S.B.  
 STATION 414+22.64 N.L.

**STATION EQUATION N.B.**  
 STATION 414+22.64 (BACK) =  
 STATION 414+00 (AHEAD)

**STATION EQUATION N.B.**  
 STATION 350+82 (BACK) =  
 STATION 350+89.37 (AHEAD)

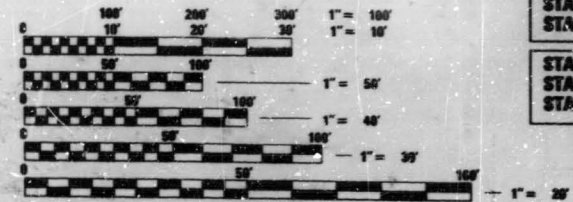
**STATION EQUATION N.B.**  
 STATION 157+25.25 (BACK) =  
 STATION 157+11.20 (AHEAD)

**PROJECT BEGINS**  
 STATION 28+70.5 S.B.  
 STATION 28+26.5 N.L.

**STATION EQUATION S.B.**  
 STATION 414+70.50 (BACK) =  
 STATION 414+00 (AHEAD)

**STATION EQUATION S.B.**  
 STATION 350+80 (BACK) =  
 STATION 350+88.26 (AHEAD)

**STATION EQUATION S.B.**  
 STATION 158+87.36 (BACK) =  
 STATION 157+11.30 (AHEAD)



FULL SIZE PLANS HAVE BEEN PREPARED USING STANDARD  
 ENGINEERING SCALES, REDUCED SIZED PLANS WILL NOT  
 CONFORM TO STANDARD SCALES, IN MAKING MEASUREMENTS  
 ON REDUCED PLANS, THE ABOVE SCALES MAY BE USED.

**CONTRACT NO. 80901**

GROSS LENGTH OF PROJECT = 38,656.30 FEET OR 7.321 MILES  
 NET LENGTH OF PROJECT = 38,656.80 FEET OR 7.321 MILES

DEPARTMENT OF TRANSPORTATION  
 FEDERAL HIGHWAY ADMINISTRATION

APPROVED: \_\_\_\_\_  
 DIVISION ADMINISTRATOR

DATE: \_\_\_\_\_

STATE OF ILLINOIS  
 DEPARTMENT OF TRANSPORTATION  
 DIVISION OF HIGHWAYS

SUBMITTED: \_\_\_\_\_

EXAMINED: \_\_\_\_\_

PASSED: SEPTEMBER 29, 1995  
*David Harold*  
 CHIEF ENGINEER

APPROVED: SEPTEMBER 29, 1995  
*James P. Stefan*  
 COUNTY ENGINEER OF COOK COUNTY

PRINTED BY AUTHORITY OF THE  
 STATE OF ILLINOIS

FOR UTILITY INFORMATION CALL  
 J.D.I.E. 1-800-892-0123

F. A. L. SEC.	SECTION	COUNTY	TOTAL SHEETS	SHEET NO.
57	#	COOK	380	2
STA.	TO STA.			
FED. ROAD DIST. NO. 1	ILLINOIS	FED. AID PROJECT		

#(0104-1021, 0406-1023K, 0607-1025HBK, 0709-1027K)RS-1;  
 (0303-1002VB, 0304-1003VB, 0607-1025HBK, 0707  
 [1019HB, 1011HA, 1012HB, 1013]R & 0101-1000HB-UR

PAGE	DESCRIPTION
1	TITLE SHEET
2	INDEX OF SHEETS, STATE STANDARDS AND PLAN NOTES
3 - 7B	SUMMARY OF QUANTITIES
8 - 10	TYPICAL CROSS SECTIONS
11 - 20	STAGES OF CONSTRUCTION
21 - 37	DRAINAGE PLANS
38 - 55	PAVEMENT PLAN WITH PAVEMENT MARKINGS
56	SCHEDULE OF STORM SEWER AND CULVERT TO BE CLEANED
57 - 60	SPECIAL DETAILS FOR BRIDGE WORK
61 - 64	LANDSCAPING PLANS
65 - 70	STEEGER ROAD OVER I-57
71 - 95	I-57 N.B. OVER E.J. & E.R.R.
96 - 120	I-57 S.B. OVER E.J. & E.R.R.
121 - 135	I-57 N.B. OVER N.Y.C.R.R.
136 - 151	I-57 S.B. OVER N.Y.C.R.R.
152 - 173	I-57 N.B. OVER I-80 C.B.
174 - 208	I-57 N.B. OVER I-80 W.B.
209 - 229	I-57 S.B. OVER I-80 W.B.
230 - 265	I-57 S.B. OVER I-80 E.B.
266 - 288	LIGHTING PLANS
289 - 323	SIGNING PLANS
324 - 326	TRAFFIC SURVEILLANCE
327	CADD STANDARD SYMBOLS
328	DETAIL OF STORM SEWER CONNECTION TO EXISTING SEWER
329	DETAILS FOR FRAMES AND LIDS ADJUSTMENT WITHOUT MILLING AND FRAMES AND LIDS ADJUSTMENT WITH MILLING
330	ADDED REINFORCEMENT AT OPENINGS FOR MANHOLES IN CRPCC PAVEMENT
331	PAVEMENT PATCHING FOR BITUMINOUS SURFACED PAVEMENT
332	BUTT JOINT AND BITUMINOUS TAPER DETAILS
333 - 334	CONCRETE BARRIER DETAIL AT BRIDGE APPROACH
335	DELETED SHEET
336	OUTLET FOR CONCRETE CURB AND GUTTER TYPE B-6.12
337	CRC HINGED JOINTED PAVEMENT SLEEPER SLAB DETAIL AND TYPICAL BENCHING DETAIL AT BRIDGE EMBANKMENT
338	TEMPORARY CONCRETE BARRIER FOR STAGE CONSTRUCTION
339	TRAFFIC CONTROL AND PROTECTION FOR SIDE ROADS, INTERSECTIONS, AND DRIVEWAYS AND SAND MODULE IMPACT ATTENUATOR
340	DETAILS FOR STEEL PLATE BEAM GUARD RAIL AND TRAFFIC BARRIER TERMINAL TYPE I ADJACENT TO CURB AND GUTTER
341	ENTRANCE AND EXIT RAMP CLOSURE DETAILS
342	DISTRICT ONE FREEWAY STANDARD - ONE LANE CLOSURE
343	TRAFFIC CONTROL DETAILS FOR CENTER LANE CLOSURE, TWO LANE HEAVE, SHOULDER LANE
344	TYPICAL APPLICATIONS RAISED REFLECTIVE PAVEMENT MARKERS (SNOW-PLOW RESISTANT)
345	MULTI-LANE FREEWAY PAVEMENT MARKING DETAILS
346	DISTRICT ONE TYPICAL PAVEMENT MARKINGS
347	PROFILES - RAMP E AND F @ U.S. 30
348 - 351	PROFILES - MAINLINE WIDENING

CROSS-SECTIONS -

352 - 357	RAMP E AND F
358 - 375	CROSS SECTIONS - MAINLINE
376 - 380	CROSS SECTIONS - TEMPORARY RAMPS AT I-80

LIST OF STATE STANDARDS

STANDARD #	DESCRIPTION
1514-10	CATCH BASINS, TYPE A AND B
1693-5	INLET, TYPE A
1686-5	SYMBOLS AND ABBREVIATIONS
2113-4	DETAIL OF NAME PLATE FOR BRIDGES
2130-16	CONCRETE CURB & COMBINATION CONCRETE CURB & GUTTER DELINEATORS
2149-12	CHAIN LINK FENCE
2168-12	GRATE, TYPE 8
2217-4	REINFORCEMENT FOR CONTINUOUSLY REINFORCED PCC PAVEMENT
2225-10	STEEL PLATE BEAM GUARDRAIL
2230-10	INLET BOX TYPE 600 (24) A
2242-9	INLET BOX TYPE 600 (24) C
2244-9	INLET BOX TYPE 900 (36) A
2248-9	INLET BOX TYPE 600 (24) D
2249-8	MEDIAN INLET FOR 900 mm 36" R.C.P.
2251-2	BREAK-AWAY SIGN POSTS
2255-12	TYPICAL APPLICATION OF TRAFFIC CONTROL DEVICES MULTILANE DIV. AND UNDIV., RURAL, DAY OR NIGHT
2298-12	TYPICAL APPLICATION OF TRAFFIC CONTROL DEVICES MULTILANE DIV. AND UNDIV., RURAL, OVER ONE DAY
2314-9	SIGN PANEL MOUNTING DETAILS
2316-16	SIGN PANEL ERECTION DETAILS
2319-6	PAVEMENT JOINTS
2320-5	BRIDGE APPROACH SHOULDER PAVEMENT AND DRAIN
2323-14	SUB-SURFACE DRAINS
2324-10	INLET BOX TYPE 1200 (48) A
2327-12	CONCRETE BARRIER
2332-6	TRAFFIC BARRIER TERMINAL, TYPE 1
2333-5	TRAFFIC BARRIER TERMINAL, TYPE 4
2336-5	TRAFFIC BARRIER TERMINAL, TYPE 5 & 5A
2339-4	TRAFFIC BARRIER TERMINAL, TYPE 6
2340-6	PAVEMENT FABRIC
2341-9	METAL POSTS (SIGNS, MARKERS, AND DELINEATORS)
2347-5	CONCRETE HEADWALL FOR PIPE DRAINS
2350-4	TEMPORARY EROSION CONTROL SYSTEMS
2362-4	FRAME AND GRATE, TYPE 21
2364-4	TYPICAL APPLICATIONS, RAISED REFLECTIVE PAVEMENT MARKERS (SNOW PLOW RESISTANT)
2381-2	TYPICAL APPLICATION OF TRAFFIC CONTROL DEVICES TWO LANE, TWO-WAY, RURAL, ONE-LANE CLOSURE ON BRIDGE DECK, DAY OR NIGHT OPERATIONS
2386-1	TYPICAL APPLICATION OF TRAFFIC CONTROL DEVICES MULTILANE DIVIDED AND UNDIVIDED RURAL, DAY OR NIGHT OPERATIONS
2397-2	7.2 M (24') HINGE-JOINTED PCC PAVEMENT
2409-4	PCC SHOULDER
2419-2	TYPICAL EXIT RAMP TERMINAL - JOINTED PCC RAMP ADJACENT TO CRC PAVEMENT
2428-2	TYPICAL ENTRANCE RAMP TERMINAL - JOINTED PCC RAMP ADJACENT TO CRC PAVEMENT
2429-4	TUMBLE STRIP FOR PCC OR BITUMINOUS SHOULDER
2433-2	PCC/BITUMINOUS STABILIZATION AT STEEL PLATE BEAM GUARDRAIL
2435-3	BRIDGE APPROACH PAVEMENT
2438-1	BRIDGE APPROACH PAVEMENT (DRAIN DETAIL)
2441-1	PRECAST REINFORCED CONCRETE FLARED END SECTION
2442-3	CLASS A PATCHES
2443-3	CLASS B PATCHES
2449-1	STANDARD EXTRUDED ALUMINUM SIGN PANELS
2425-5	MAJOR GUIDE SIGN LAYOUT - ARROWS, GORE SIGNS
2426-4	BITUMINOUS SHOULDER DETAILS ADJACENT TO RIGID PAVEMENT
TS-2147-7	
TS-2341-1	
2237-12	

PLAN NOTES

BEFORE STARTING ANY EXCAVATION, THE CONTRACTOR SHALL CALL "JULIE" AT 800-892-0123 OR "CUAM" (CHICAGO UTILITY ALERT NETWORK), (312)744-7000 FOR FIELD LOCATIONS OF BURIED ELECTRIC, TELEPHONE AND GAS FACILITIES. (48 HOURS NOTIFICATION IS REQUIRED!).

3 METER (10') TRANSITIONS SHALL BE USED TO MATCH PROPOSED CURB & GUTTER AND MEDIAN ITEMS OF WORK TO EXISTING CURBS & GUTTERS AND MEDIANS IN THE FIELD, UNLESS OTHERWISE SHOWN. THE TRANSITIONS SHALL BE PAID FOR AT THE CONTRACT UNIT PRICE FOR THE PROPOSED ITEMS OF WORK SPECIFIED.

THE CONTRACTOR SHALL COORDINATE CONSTRUCTION ACTIVITIES WITH UTILITY COMPANIES AND THE CITY OF CHICAGO.

THE CONTRACTOR WILL NOT BE ALLOWED TO SET UP A YARD OR FIELD OFFICE ON STATE PROPERTY WITHOUT WRITTEN PERMISSION FROM THE DEPARTMENT.

THE REMOVAL OF GUARDRAIL TERMINAL SECTIONS SHALL BE INCLUDED IN THE UNIT PRICE PER METER (FOOT) FOR STEEL PLATE BEAM GUARD RAIL REMOVAL.

BARRICADES: THE CONTRACTOR SHALL PROVIDE AND INSTALL TWO (2) WEIGHTED SAND BAGS ON EACH TYPE I OR TYPE II BARRICADE USED - ONE (1) WEIGHTED SAND BAG ACROSS EACH BOTTOM RAIL.

WHEN ARTIFICIAL LIGHTING IS UTILIZED IN NIGHT OPERATIONS THE CONTRACTOR SHALL EXERCISE THE UTMOST PRECAUTIONS IN PREVENTING ADVERSE VISIBILITY TO THE MOTORING PUBLIC AND ADJOINING RESIDENTIAL AREAS.

USE EPOXY-COATED NO. 25 (#8) BARS WITHOUT KEYWAY IN LIEU OF NO. 20 (#6) BARS WITH KEYWAY IN LONGITUDINAL CONSTRUCTION JOINTS FOR P.C.C. PAVEMENT.

QUANTITIES FOR TEMPORARY EROSION CONTROL ITEMS ARE INCLUDED IN THE PLANS. THE TEMPORARY EROSION CONTROL IS AVAILABLE FOR INSPECTION AT THE DISTRICT HEADQUARTERS. THIS PLAN WILL BE GIVEN TO THE ENGINEER AT THE PRE-CONSTRUCTION MEETING.

ILLINOIS DEPARTMENT OF TRANSPORTATION

I-57

INDEX OF SHEETS, STATE STANDARDS, & PLAN NOTES

REVISIONS	
NAME	DATE

SCALE: VERT.      DRAWN BY  
 HORIZ.              CHECKED BY  
 DATE

Bench Mark: Chisled "□" in center of 4' H.W. in N.E. quadrant of I-57 & Steger Rd. El. 753.05

Existing Bridge Description: The Bridge consists of a 2 span continuous Steel Plate Girder Superstructure having equal spans of 89'-3". The 7" thick concrete deck has a concrete overlay as does the 15 1/2" thick vaulted slab spans. The Steel Superstructure rests on R.C. Vaulted Abutments and on a R.C. Pier.

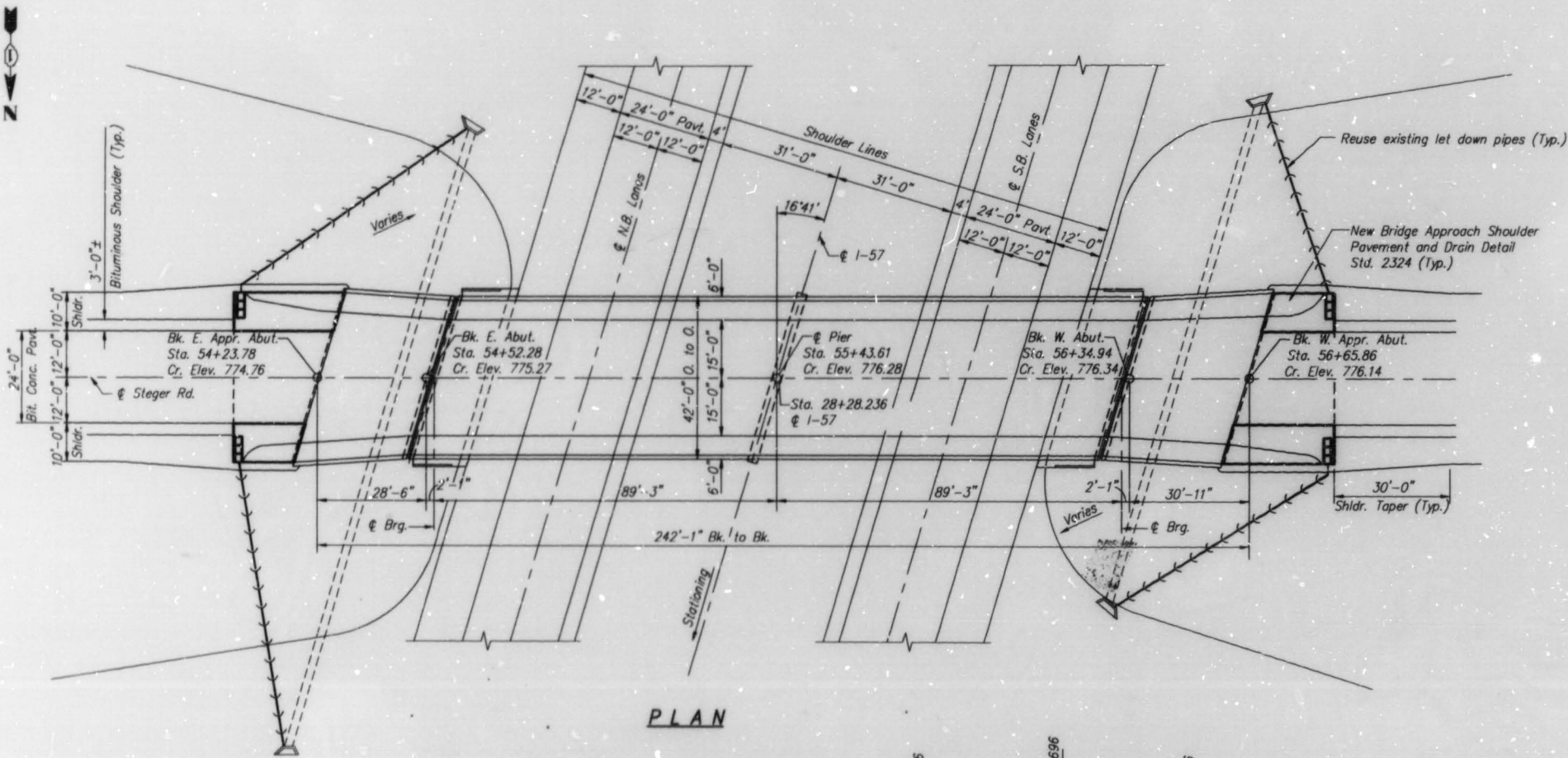
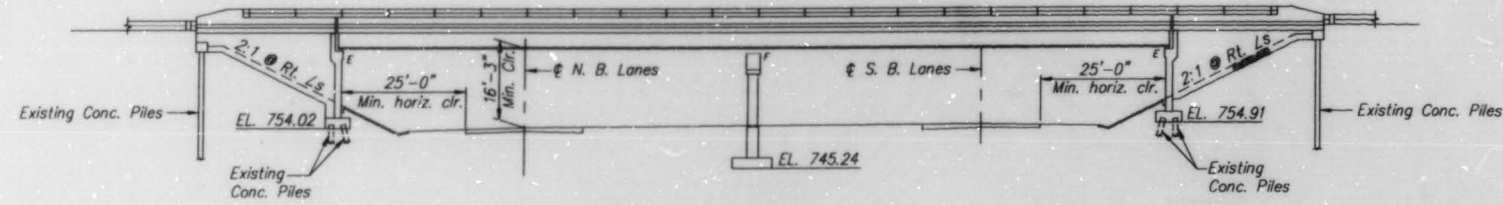
Traffic Maintenance: Shoulder closures and temporary lane closures as required.

No Salvage.

STATE OF ILLINOIS  
DEPARTMENT OF TRANSPORTATION

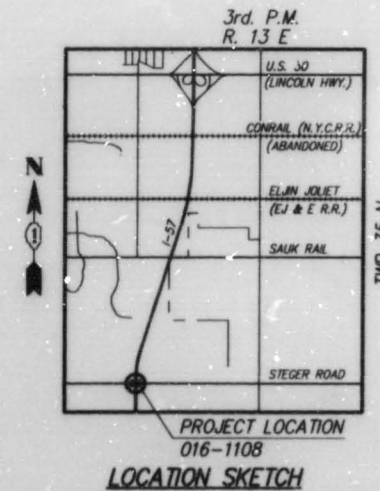
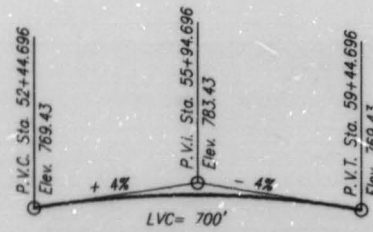
ROUTE NO.	SECTION	COUNTY	SHEET	TOTAL
FAI 57	*	COOK	380	65
FED. ROAD DIST. NO. 7		ILLINOIS	FED. AID PROJECT-	

(0104-1021, 0405-1023K, 0507-1025HBK, 0709-1027K)PS-1;  
(0303-1002VB, 0304-1003VB, 0507-1025HBK, 0707[1010HP, 1011HB, 1012HB, 1013HB])R & 0101-1000HB-BR



APPROVED  
FOR STRUCTURAL ADEQUACY ONLY

*Robert E. Anderson*  
Engineer of Bridges and Structures



90 Roster  
7-19-95  
Exp. 11-30-96

GENERAL PLAN  
STEGER ROAD OVER I-57  
STA. 55+43.61 (STEGER RD.)  
STRUCTURE NUMBER: 016-1108  
SECTION 0101-1000HB-R  
COOK COUNTY  
SHEET NO. 1  
OF 5 SHEETS

DESIGNED	DM
CHECKED	DEY
DRAWN	S.O.I.
CHECKED	DEY

HAZELET + ERDAL, INC.  
CONSULTING ENGINEERS  
FILE NUMBER 626

STATE OF ILLINOIS  
DEPARTMENT OF TRANSPORTATION

ROUTE NO.	SECTION	COUNTY	SHEETS	TOTAL
F.A.I. 57	#	COOK COUNTY	380	66
FED. ROAD DIST. NO. 7		BLANDED	FED. AID PROJECT	

\* (0104-1021, 0405-1023K, 0507-1025HBK, 0709-1027KRS-1,  
(0303-1002VB, 0304-1003VB, 0507-1025HBK, 07071010HB, 1011HB,  
1012HB, 1013HB)R & 0101-1000HB-BR

**GENERAL NOTES**

The Inorganic Zinc-silicate / Acrylic / Acrylic paint system shall be used for shop and field painting of New Structural Steel except where otherwise noted. The color of the acrylic finish coats for the access doors and frames shall be Light Grey, Munsell No. 10Y7-1. See the Special Provisions for *Cleaning and Painting Metal Structures*.

Field welding of construction accessories will not be permitted to the bottom flange of beams or girders nor to the top flange for a distance equal to one-fourth the span length each way from the pier supports. Field welding in other areas will be permitted only when approved by the Engineer.

Reinforcement bars shall conform to the requirements of AASHTO M-31, M-42 or M-53 Grade 60.

Plan dimensions and details relative to existing structure have been taken from existing plans and are subject to nominal construction variations. It shall be the Contractor's responsibility to verify such dimensions and details in the field and make necessary approved adjustments prior to construction or ordering of materials. Such variations shall not be cause for additional compensation for a change in the scope of the work, however, the Contractor will be paid for the quantity actually furnished at the unit price bid for the work.

Cleaning and painting of the existing structural steel shall be as specified in the Special Provision for "Cleaning and Painting Existing Steel Structures". All existing structural steel within 5 feet of either side of expansion joints shall be cleaned by Method 1. All remaining existing structural steel shall be cleaned by Method 2. The Lead and Chromate Free Alkyd Paint System shall be used for painting of existing structural steel. The prime and intermediate coats shall be applied as specified in the special provision followed by one complete final finish coat over all steel surfaces. The color of the final finish coats for the exterior face and the bottom flange of the fascia beams shall be Interstate Green, Munsell No. 7.5G4-8 and for all Interior Surfaces the color shall be Light Grey, Munsell No. 10Y7-1. See the Special Provisions.

**TOTAL BILL OF MATERIAL**

DESCRIPTION	UNITS	SUPERSTRUCTURE	SUBSTRUCTURE	TOTAL
CONCRETE REMOVAL	CU YD	-	0.8	0.8
FORMED CONCRETE REPAIR (DEPTH EQUAL TO OR LESS THAN 5")	SQ FT	-	314	314
FURNISHING AND ERECTING STRUCTURAL STEEL	POUND	360	-	360
CLEANING AND PAINTING STEEL BRIDGE NO. 1	L SUM	1	-	1
BLASTING RESIDUE CONTAINMENT AND DISPOSAL BRIDGE NO. 1	L SUM	1	-	1
POWER TOOL CLEANING RESIDUE CONTAINMENT AND DISPOSAL NO. 1	L SUM	1	-	1
EPOXY CRACK SEALING	FOOT	-	8	8
REGRADE SLOPE INSIDE VAULTED ABUTMENTS	L SUM	-	1	1

**INDEX OF SHEETS**

- 1 General Plan
- 2 General Notes & Bill of Material
- 3 Steel Framing Plan
- 4 East Abutment Repairs
- 5 West Abutment Repairs

GENERAL NOTES & BILL OF MATERIAL  
STEGER RD. OVER I-57  
STA. 55+43.61 (STEGER RD.)  
STRUCTURE NUMBER: 016-1108  
SECTION 0101-1000HB-R  
COOK COUNTY

SHEET NO. 2  
OF 5 SHEETS

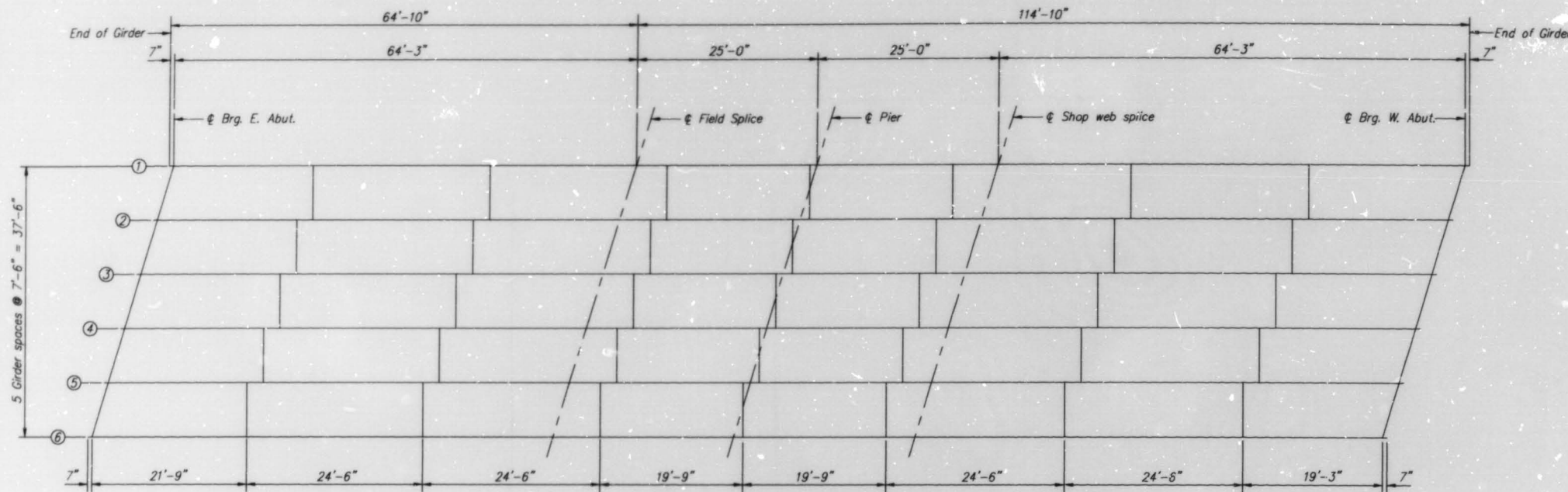
DESIGNED	CAD
CHECKED	DEM
DRAWN	RSB
CHECKED	DEM

**HAZELET + ERDAL, INC.**  
CONSULTING ENGINEERS  
FILE NUMBER 626

STATE OF ILLINOIS  
DEPARTMENT OF TRANSPORTATION

ROUTE NO.	SECTION	COUNTY	SHEET NO.	TOTAL SHEETS
F.A.I. 57	#	COOK	380	67
FED. ROAD DIST. NO. 7	ALIGNED	FED. AID PROJECT		

\* (0104-1021, 0405-1023K, 0507-1025HBK, 0709-1027K)RS-1;  
(0303-1002VB, 0304-1003VB, 0507-1025HBK, 0707-1010HB, 1011HB,  
1012HB, 1013HB)R & 0101-1000HB-BR



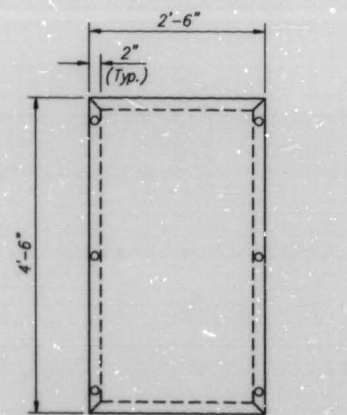
**FRAMING PLAN**  
(Existing steel framing and bearings to remain)



**HALF GIRDER ELEVATION**  
(EXISTING)

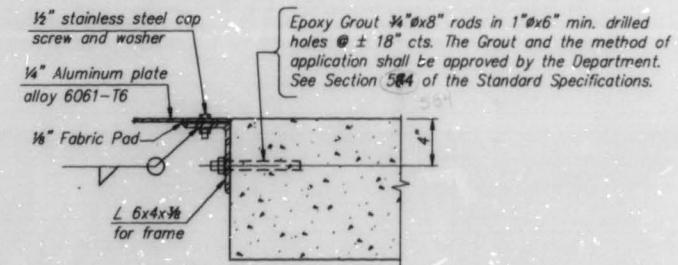
**BILL OF MATERIAL**

ITEM	UNIT	TOTAL
Furnishing and Erecting Structural Steel	POUND	360



**DOOR FOR VAULTED ABUTMENTS**

Cost to be included in "Furnishing and Erecting Structural Steel".



**SECTION THRU DOOR FRAME**

DESIGNED	DM
CHECKED	DEY
DRAWN	S.O.I.
CHECKED	DEY

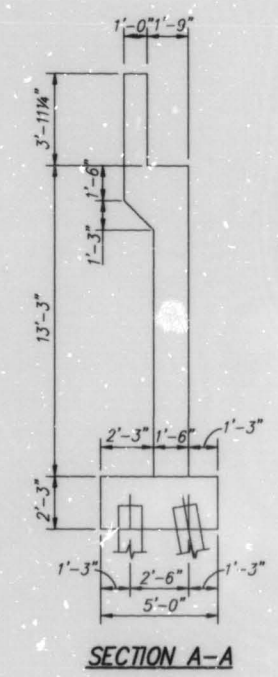
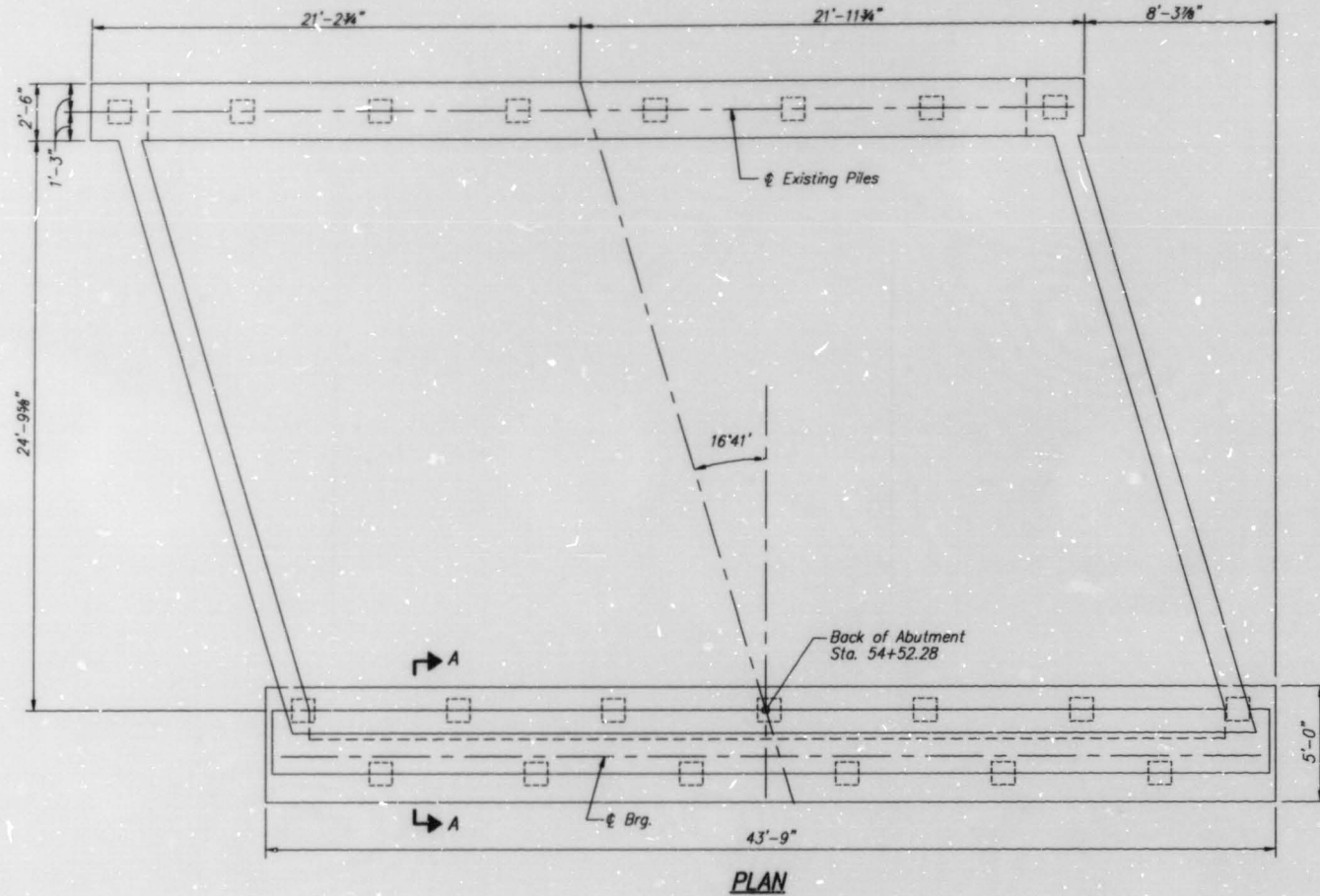
HAZELET + ERDAL, INC.  
CONSULTING ENGINEERS  
FILE NUMBER 626

**STEEL FRAMING PLAN**  
STEGER ROAD OVER I-57  
STA. 55+43.61 (STEGER RD.)  
STRUCTURE NUMBER: 016-1108  
SECTION 0101-1000HB-R  
COOK COUNTY  
SHEET NO. 3  
OF 5 SHEETS

STATE OF ILLINOIS  
DEPARTMENT OF TRANSPORTATION

ROUTE NO.	SECTION	COUNTY	SHEETS	TOTAL
F.A.I. 57	#	COOK	380	68
FED. ROAD DIST. NO. 1		ALIGNMENT	FED. AID PROJECT	

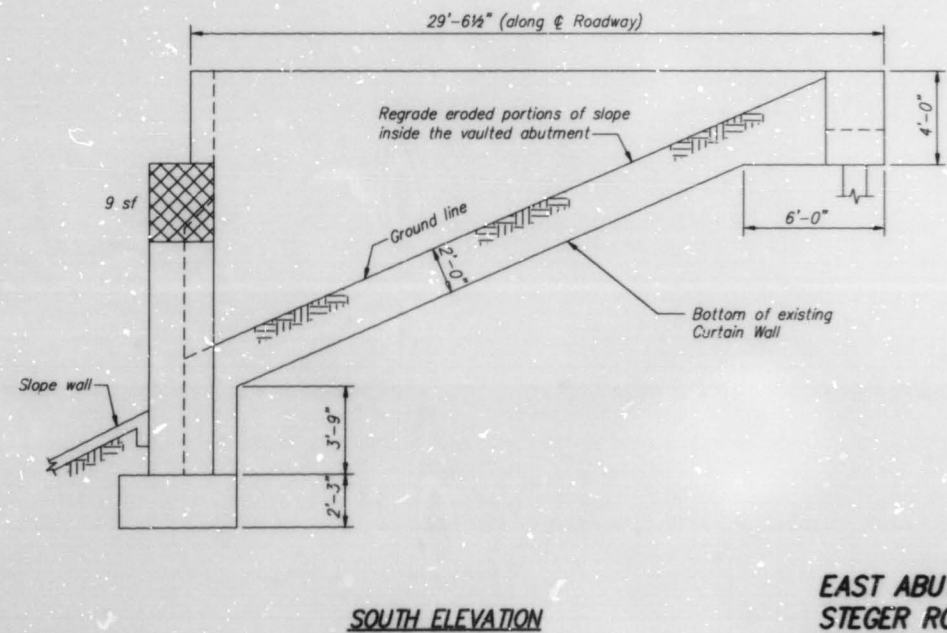
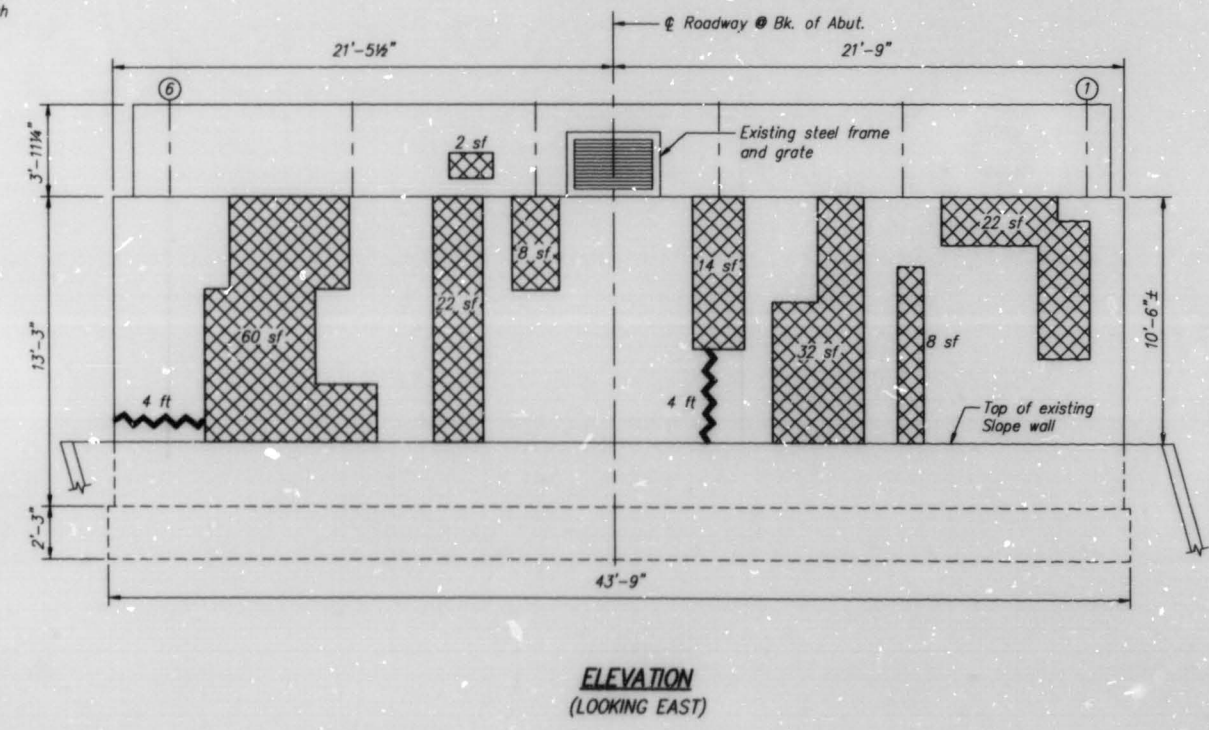
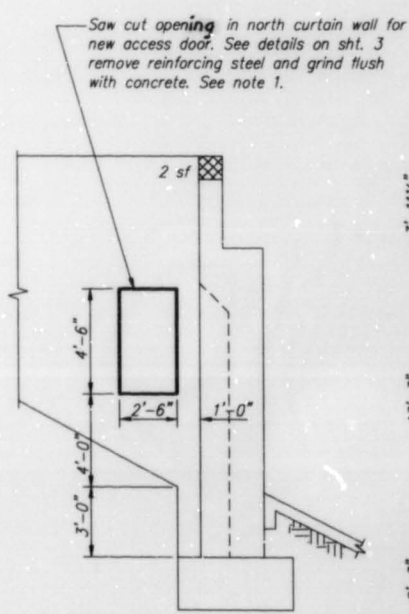
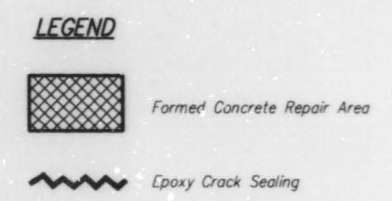
\* (0104-1021, 0405-1023K, 0507-1025HBK, 0709-1027K)RS-1;  
(0303-1002VB, 0304-1003VB, 0507-1025HBK, 0707[1010HB, 1011HB,  
1012HB, 1013HB])R & 0101-1000HB-BR



**BILL OF MATERIAL**

ITEM	UNIT	TOTAL
Concrete Removal	CU YD	0.4
Epoxy Crack Sealing	FOOT	8
Formed Concrete Repair (Depth equal to or less than 5")	SQ FT	179

**NOTES:**  
1. The cost of saw cutting concrete and removal of reinforcing steel shall be included in the unit cost of "Concrete Removal".



DESIGNED	DM
CHECKED	DEY
DRAWN	S.O.I.
CHECKED	DEY

**NORTH ELEVATION**

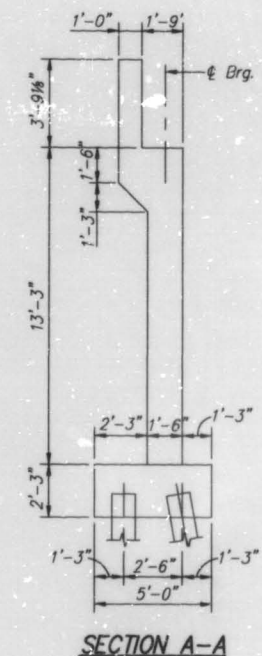
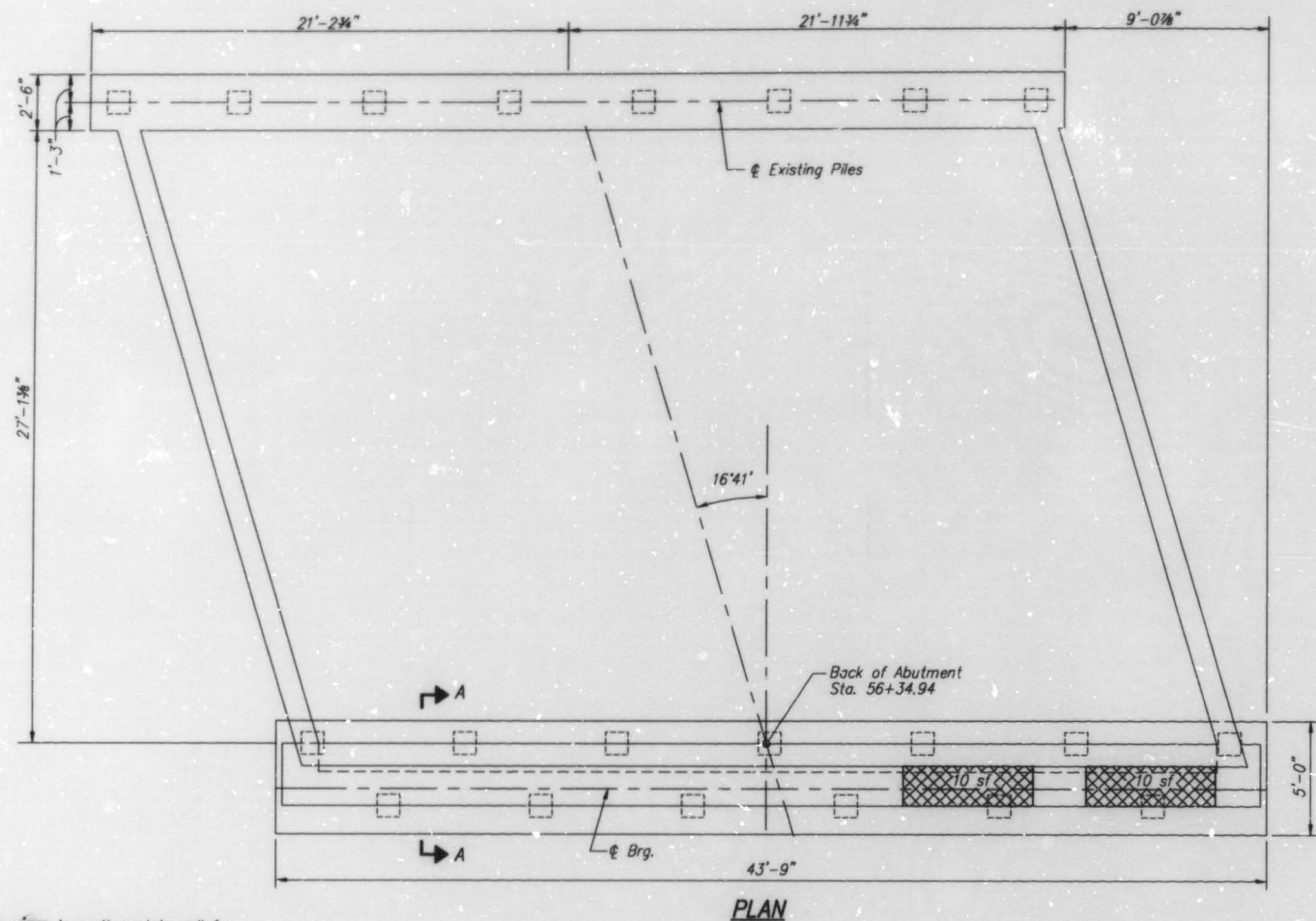
HAZELET + ERDAL, INC.  
CONSULTING ENGINEERS  
FILE NUMBER 626

**EAST ABUTMENT REPAIRS  
STEGER ROAD OVER I-57  
STA. 55+43.61 (STEGER RD.)  
STRUCTURE NUMBER: 016-1108  
SECTION 0101-1000HB-R  
COOK COUNTY  
SHEET NO. 4  
OF 5 SHEETS**

STATE OF ILLINOIS  
DEPARTMENT OF TRANSPORTATION

ROUTE NO.	SECTION	COUNTY	SHEET	TOTAL
F.A.I. 57	*	COOK	380	69
PER MISS. DIST. NO. 7		ILLINOIS PER MISS. PROJECT		

\* (0104-1021, 0405-1023K, 0507-1025HBK, 0709-1027K)R5-1;  
(0303-1002VB, 0304-1003VB, 0507-1025HBK, 0707[1010HB, 1011HB,  
1012HB, 1013HB])R & 0101-1000HB-BR



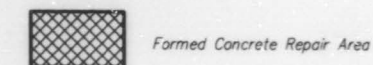
BILL OF MATERIAL

ITEM	UNIT	TOTAL
Concrete Removal	CU YD	0.4
Formed Concrete Repair (Depth equal to or less than 5")	SQ FT	135

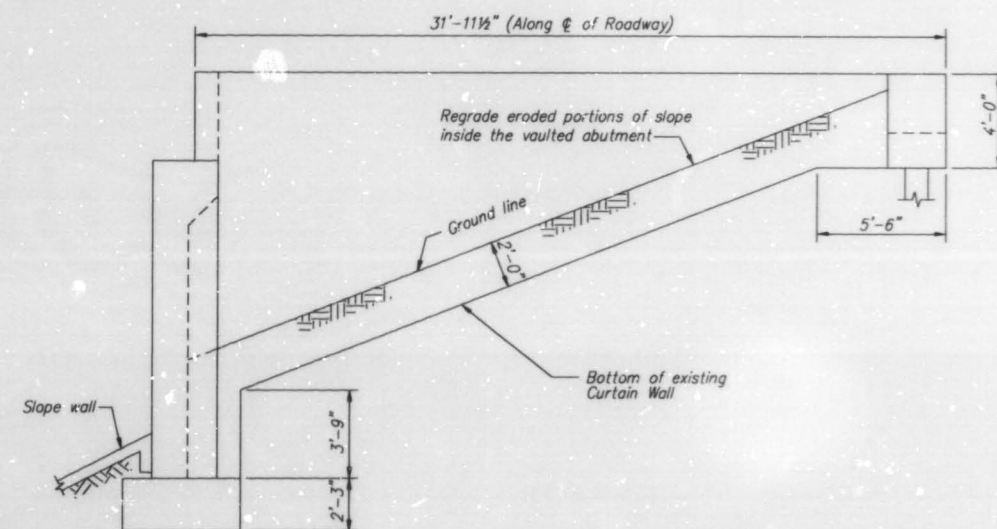
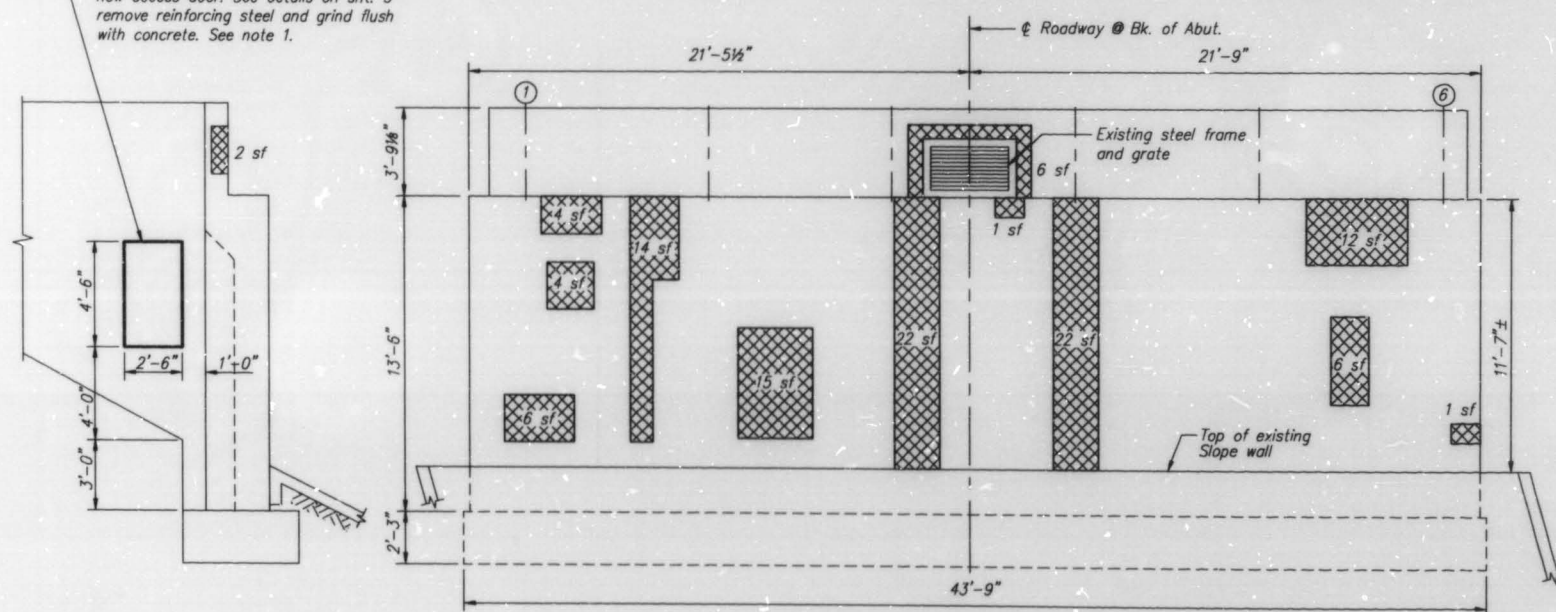
NOTES:

- The cost of saw cutting concrete and removal of reinforcing steel shall be included in the unit cost of "Concrete Removal".

LEGEND



Saw cut opening in north curtain wall for new access door. See details on sht. 3 remove reinforcing steel and grind flush with concrete. See note 1.



DESIGNED	DM
CHECKED	DEY
DRAWN	S.O.I.
CHECKED	DEY

SOUTH ELEVATION

ELEVATION  
(LOOKING WEST)

HAZELET + ERDAL, INC.  
CONSULTING ENGINEERS  
FILE NUMBER 626

WEST ABUTMENT REPAIRS  
STEGER ROAD OVER I-57  
STA. 55+43.61 (STEGER RD.)  
STRUCTURE NUMBER: 016-1108  
SECTION 0101-1000HB-R  
COOK COUNTY  
SHEET NO. 5  
OF 5 SHEETS

FAL. RTE.	SECTION	COUNTY	TOTAL SHEETS	SHEET NO.
S7	"	COOK	380	70
STA.		TO STA.		
FED. ROAD DIST. NO.	ILLINOIS	FED. AID PROJECT		

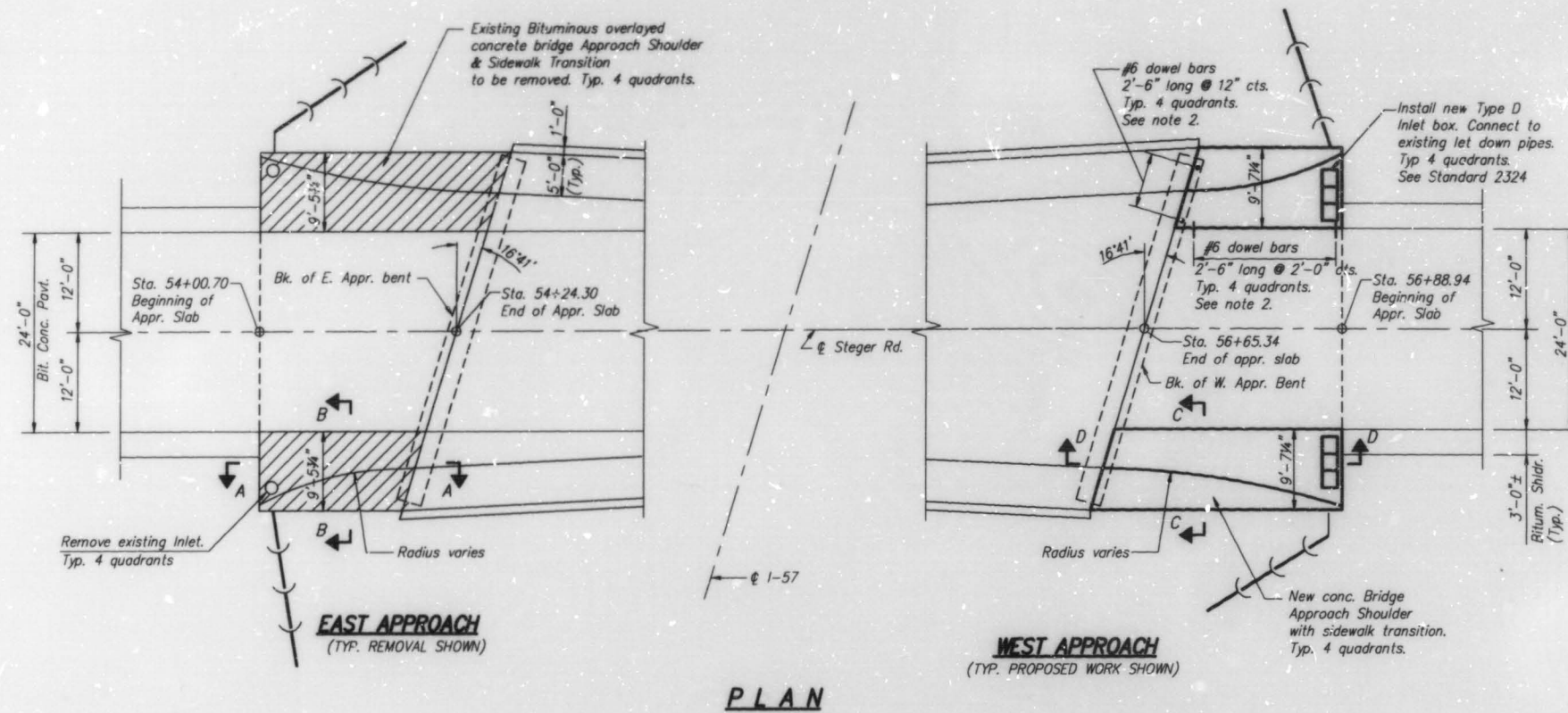
\* (0104-1021, 0405-1023K, 0507-1025HBK, 0709-1027K)RS-1;  
 (0303-1002VB, 0304-1003VB, 0507-1025HBK, 0707[1010HB, 1011HB, 1012HB, 1013HB])R & 0101-1000HB-BR

**BILL OF MATERIAL**

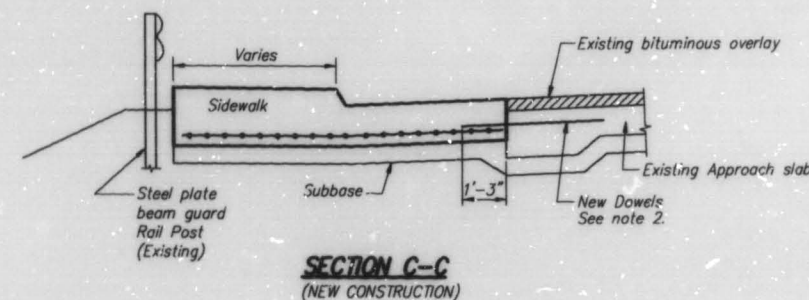
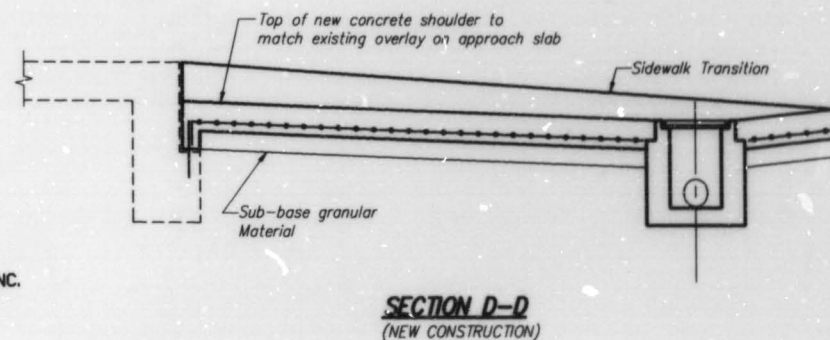
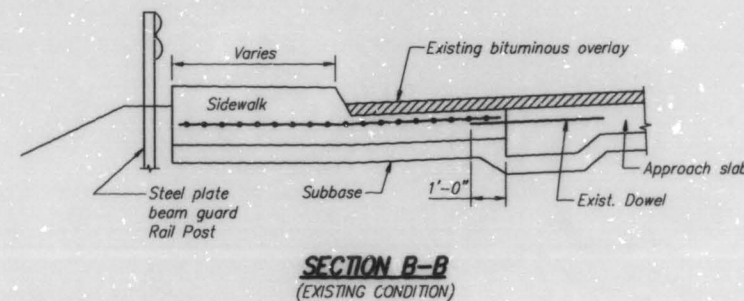
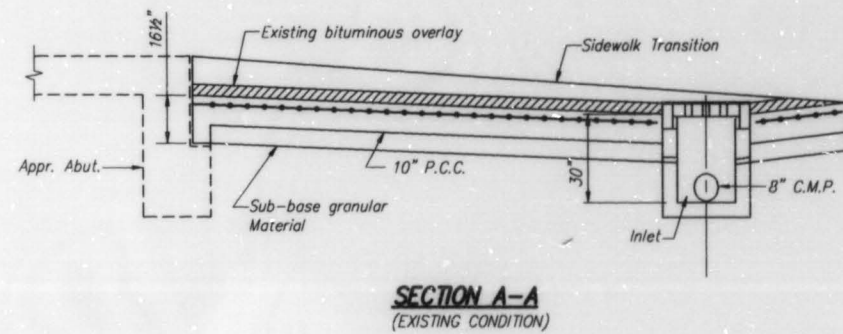
Item	Unit	Total
Bridge Approach Shoulder Removal	SQ YD	95
Inlets Removed Special	EACH	4
Type D Inlet Box	EACH	4
P.C. Concrete Bridge Approach Shoulder Pavement Special	SQ YD	95

**Notes:**

- For new construction details not shown refer to Standard 2324.
- #6 rebar dowels require drilling and epoxy grouting into existing concrete approach pavement or approach bent. Cost to be included in the unit price for "P.C. Concrete Bridge Approach Shoulder Pavement Spec."



**PLAN**



HAZELET + ERDAL, INC.  
 CONSULTING ENGINEERS

FILE NUMBER 626

DRAWN BY SOI

CHECKED BY DEH

APPROVED BY DEY

87/81/1995 SOI 0:\30\FILES\626\STEGER.APPRSH.D

REVISIONS	
NAME	DATE

ILLINOIS DEPARTMENT OF TRANSPORTATION  
 STEGER ROAD OVER I-57  
 SECTION 0101-1000HB-R  
 BRIDGE APPROACH SHOULDER  
 DETAILS

SCALE: VER.:  
 HORIZ.  
 DATE: DEC 1994

DRAWN BY SOI  
 CHECKED BY DEH