

11-06-2015 LETTING ITEM 092

STATE OF ILLINOIS
DEPARTMENT OF TRANSPORTATION
DIVISION OF HIGHWAYS

**PROPOSED
HIGHWAY PLANS**

VARIOUS ROUTES
VARIOUS LOCATIONS
SECTION 2015-0581
PERMANENT PROTECTIVE SHIELDING
VARIOUS COUNTIES

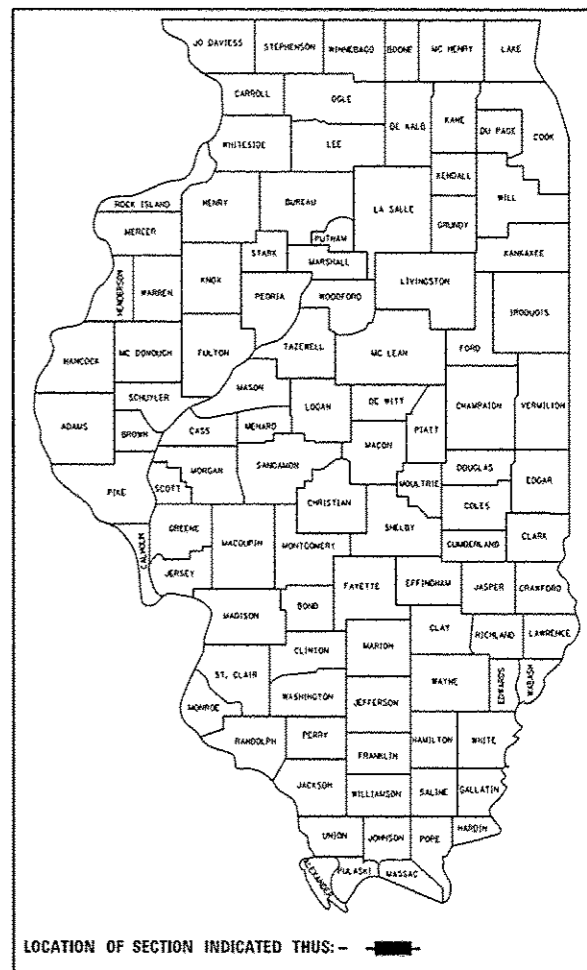
C-91-401-15

- LOC 1) PAULINA AVE. OVER I-290 SN 016-0098
- LOC 2) 5TH AVE. OVER I-290 SN 016-0692
- LOC 3) 159TH ST. OVER I-57 SN 016-1013
- LOC 4) STEGER RD. OVER I-57 SN 016-1108
- LOC 5) YORK RD. OVER IL 38 SN 022-0067
- LOC 6) IL 120 OVER US 41 SN 049-0050

FOR LOCATION MAPS SEE SHEETS 4 & 5

F.A. RTE.	SECTION	COUNTY	TOTAL SHEETS	SHEET NO.
VAR.	2015-0581	VARIOUS	21	1
ILLINOIS			CONTRACT NO. 62B23	

D-91-401-15



FOR INDEX OF SHEETS, SEE SHEET NO. 2

IMPROVEMENTS ARE LOCATED IN THE CITY OF CHICAGO AND VILLAGES OF MARKHAM, MAYWOOD, PARK CITY, UNIVERSITY PARK AND YORKFIELD

C.U.A.N.
CHICAGO UTILITY ALERT NETWORK
1-312-744-7000

J.U.L.I.E.
JOINT UTILITY LOCATION INFORMATION FOR EXCAVATION
1-800-892-0123
OR 811

PROJECT ENGINEER J. ALAIN MIDY (847) 221-3056
PROJECT MANAGER ISSAM RAYYAN (847) 705-4178

CONTRACT NO. 62B23

STATE OF ILLINOIS
DEPARTMENT OF TRANSPORTATION
DIVISION OF HIGHWAYS

SUBMITTED *August 15, 2015*
John F. Johnson
DEPUTY DIRECTOR OF HIGHWAYS, REGION ENGINEER

Oct 2, 2015
John D. Kavanagh
ENGINEER OF DESIGN AND ENVIRONMENT

Oct 2, 2015
Omer Osman
DIRECTOR OF HIGHWAYS, CHIEF ENGINEER

**PRINTED BY THE AUTHORITY
OF THE STATE OF ILLINOIS**

INDEX OF SHEETS

1. TITLE SHEET
2. INDEX OF SHEETS, STATE STANDARDS & GENERAL NOTES
3. SUMMARY OF QUANTITIES
- 4-5. LOCATION MAPS
- 6-7. BRIDGE PLANS LOCATION 1 (SN 016-0098)
- 8-9. BRIDGE PLANS LOCATION 2 (SN 016-0692)
- 10-11. BRIDGE PLANS LOCATION 3 (SN 016-1013)
- 12-13. BRIDGE PLANS LOCATION 4 (SN 016-1108)
- 14-15. BRIDGE PLANS LOCATION 5 (SN 022-0067)
- 16-17. BRIDGE PLANS LOCATION 6 (SN 049-0050)
18. PERMANENT PROTECTIVE SHIELDING DETAILS
19. ENTRANCE AND EXIT RAMP CLOSURE DEATAILS (TC-8)
20. TRAFFIC CONTROL DETAILS FOR FREEWAY SINGLE & MULTI-LANE WEAVE (TC-9)
21. TRAFFIC CONTROL DETAILS FOR FREEWAY SHOULDER CLOSURE AND PARTIAL RAMP CLOSURES (TC-17)

STATE STANDARDS

- 701101-04 OFF-RD OPERATIONS, MULTILANE, 15' (4.5 m) TO 24" (600 mm) FROM PAVEMENT EDGE
- 701400-08 APPROACH TO LANE CLOSURE, FREEWAY/EXPRESSWAY
- 701401-09 LANE CLOSURE, FREEWAY/EXPRESSWAY
- 701411-09 LANE CLOSURE, MULTILANE AT ENTRANCE OR EXIT RAMP FOR SPEEDS \geq 45 MPH
- 701421-07 LANE CLOSURE, MULTILANE, DAY OPERATIONS ONLY FOR SPEEDS \geq 45 MPH TO 55 MPH
- 701428- TRAFFIC CONTROL SETUP AND REMOVAL FREEWAY/EXPRESSWAYS
- 701446-06 TWO LANE CLOSURE, FREEWAY/EXPRESSWAY
- 701901-04 TRAFFIC CONTROL DEVICES

GENERAL NOTES

BEFORE STARTING ANY EXCAVATION, THE CONTRACTOR SHALL CALL "J.U.L.I.E." (JOINT UTILITY LOCATION INFORMATION FOR EXCAVATION) AT (1-800)-892-0123 OR 811 FOR FIELD LOCATIONS OF BURIED ELECTRIC, TELEPHONE AND GAS UTILITIES. (48 HOUR NOTIFICATION IS REQUIRED).

THE CONTRACTOR WILL NOT BE ALLOWED TO SET UP A YARD OR FIELD OFFICE ON STATE PROPERTY WITHOUT WRITTEN PERMISSION FROM THE DEPARTMENT.

DO NOT SCALE PLANS FOR CONSTRUCTION DIMENSIONS.

THE CONTRACTOR SHALL CONTACT THE DISTRICT ONE TRAFFIC CONTROL SUPERVISOR AT (847) 705-4151 FOR EXPRESSWAY AND (847) 705-4470 FOR ARTERIALS A MINIMUM OF 72 HOURS IN ADVANCE OF BEGINNING WORK.

THESE PLANS HAVE BEEN PREPARED FROM NOTES RECEIVED FROM BUREAU OF MAINTENANCE BRIDGE INSPECTORS.

PLAN DIMENSIONS AND DETAILS RELATIVE TO EXISTING PLANS ARE SUBJECT TO NOMINAL CONSTRUCTION VARIATIONS. THE CONTRACTOR SHALL FIELD VERIFY EXISTING DIMENSIONS AND DETAILS AFFECTING NEW CONSTRUCTION AND MAKE NECESSARY APPROVED ADJUSTMENTS PRIOR TO CONSTRUCTION OR ORDERING OF MATERIALS. SUCH VARIATIONS SHALL NOT BE CAUSE FOR ADDITIONAL COMPENSATION FOR A CHANGE IN SCOPE OF THE WORK, HOWEVER, THE CONTRACTOR WILL BE PAID FOR THE QUANTITY ACTUALLY FURNISHED BASED AT THE UNIT PRICE BID FOR THE WORK.

THE CONTRACTOR SHALL RELOCATE ANY CONDUIT ATTACHED TO THE FLANGE PRIOR TO THE INSTALLATION OF THE PROTECTIVE SHIELDING. UNDER NO CIRCUMSTANCES SHALL THE PROTECTIVE SHIELDING REST ON TOP OF THE CONDUIT. ANY DAMAGES CAUSED BY THE CONTRACTOR TO EXISTING UTILITIES SHALL BE REPAIRED BY THE CONTRACTOR AT NO ADDITIONAL COST.

ANY WORK DONE BY THE CONTRACTOR ON THE UNDERPASS LIGHTING SYSTEM WILL REQUIRE A TRANSFER OF MAINTENANCE OF THE EFFECTED CIRCUITS TO THE CONTRACTOR. ALTERNATIVELY, THE CONTRACTOR CAN AVOID A MAINTENANCE TRANSFER BY HIRING THE DEPARTMENT'S ELECTRICAL MAINTENANCE CONTRACTOR (EMC) TO RELOCATE THE CONDUIT.

WHERE UNDERPASS LIGHTING IS PRESENT ON A STRUCTURE, THE CONTRACTOR SHALL ADJUST THE PROTECTIVE SHIELDING TO RIDE ABOVE THE EXISTING LIGHTING FIXTURES IN ORDER TO MAINTAIN THE EXISTING LEVEL OF LIGHTING ON THE ROADWAY UNDERNEATH. DETAILS SHALL BE APPROVED BY THE ENGINEER BEFORE INSTALLATION. A CLEARANCE OF $1\frac{1}{2}'' \pm \frac{1}{4}''$ AROUND THE FIXTURE SHALL BE PROVIDED FOR FUTURE MAINTENANCE.

ANY ADJUSTMENT DONE TO THE PROTECTIVE SHIELD SYSTEM MUST NOT CHANGE THE LOAD CARRYING CAPACITY OR CONTAINMENT SPECIFICATIONS AS INDICATED ON THE PERMANENT PROTECTIVE SHIELDING DETAILS LOCATED IN THE PLANS. COST OF ADJUSTING SHIELDING IS INCLUDED IN THE COST OF PROTECTIVE SHIELD (PERMANENT).

IT SHALL BE THE CONTRACTOR'S RESPONSIBILITY TO VERIFY THE LOCATION OF ALL FIBER OPTIC UTILITIES PRIOR TO STARTING CONSTRUCTION.

CONTRACTOR MUST COMPLETE WORK WITHOUT DISTURBING ANY EXISTING LIGHTING AND SURVEILLANCE CONDUIT OR JUNCTION BOXES. IF INSTALLATIONS ARE DAMAGED IN THE PROCESS, CONTRACTOR SHALL REPAIR OR REPLACE EXISTING ELECTRICAL INSTALLATIONS IN COMPLIANCE WITH ELECTRICAL OR SURVEILLANCE CONSTRUCTION SPECIFICATIONS.

FILE NAME	USER NAME	DESIGNED	REVISED	STATE OF ILLINOIS DEPARTMENT OF TRANSPORTATION	INDEX OF SHEETS, STATE STANDARDS AND GENERAL NOTES	F.A. RTE.	SECTION	COUNTY	TOTAL SHEETS	SHEET NO.
p:\11064EBID\INTEG\Illinois.gov\FW1007\Documents\1007\Office\District 1\Projects\0148\DRAWING\Design\014815-shr-plan.dgn	pgr2anowkvb	-	-			VAR.	2015-0581	VARIOUS	21	2
Default	PLOT SCALE = 100.0000' / 1" / in	CHECKED	REVISED		SCALE:	SHEET	OF	SHEETS	STA.	TO STA.
	PLOT DATE = 8/26/2015	DATE	REVISED		ILLINOIS FED. AID PROJECT					
									CONTRACT NO. 62B23	

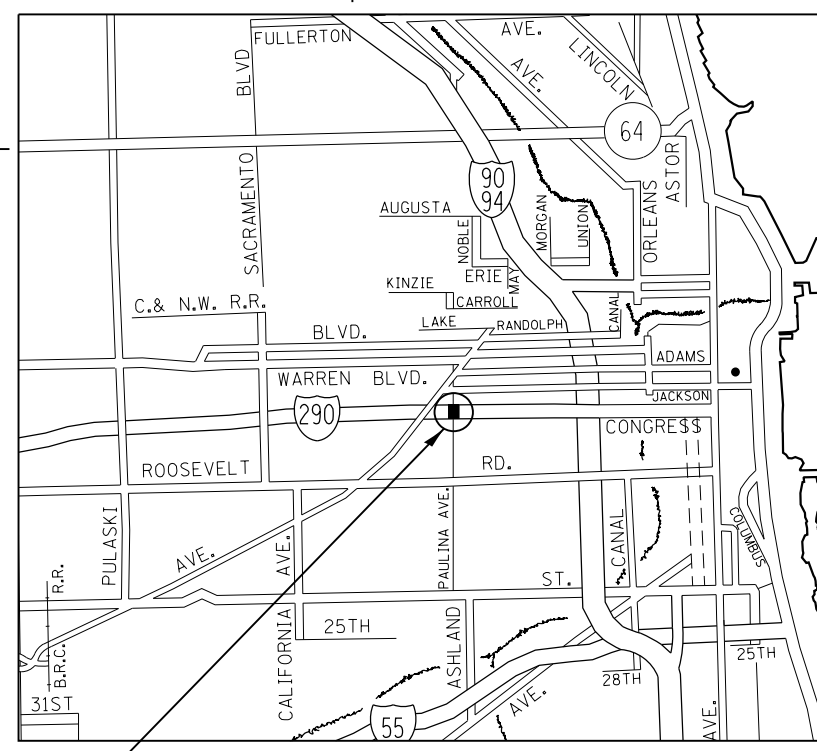
SUMMARY OF QUANTITIES			URBAN 100% STATE TOTAL QUANTITIES	CONSTRUCTION TYPE CODE 0014						SUMMARY OF QUANTITIES				CONSTRUCTION TYPE CODE					
CODE NO	ITEM	UNIT		016-0098	016-0692	016-1013	016-1108	022-0067	049-0050	CODE NO	ITEM	UNIT	TOTAL QUANTITIES						
67000400	ENGINEER'S FIELD OFFICE, TYPE A	CAL MO	3	0.5	0.5	0.5	0.5	0.5	0.5										
67100100	MOBILIZATION	LSUM	1	0.16	0.16	0.17	0.17	0.17	0.17										
70100310	TRAFFIC CONTROL AND PROTECTION, STANDARD 701421	LSUM	1					0.5	0.5										
70200100	NIGHTTIME WORK ZONE LIGHTING	LSUM	1	0.16	0.16	0.17	0.17	0.17	0.17										
X5017305	PROTECTIVE SHIELD (PERMANENT)	50 YD	4438	1063	683	1671	284		737										
X7011015	TRAFFIC CONTROL AND PROTECTION (EXPRESSWAYS)	LSUM	1	0.25	0.25	0.25	0.25												
Z0015550	DEBRIS REMOVAL	CU YD	50					50											



LOCATION 1

R 13 E | R 14 E

T 39 N | T 40 N



WEST CHICAGO TOWNSHIP

PAULINA AVE. OVER I-290
CITY OF CHICAGO
(SN 016-0098)

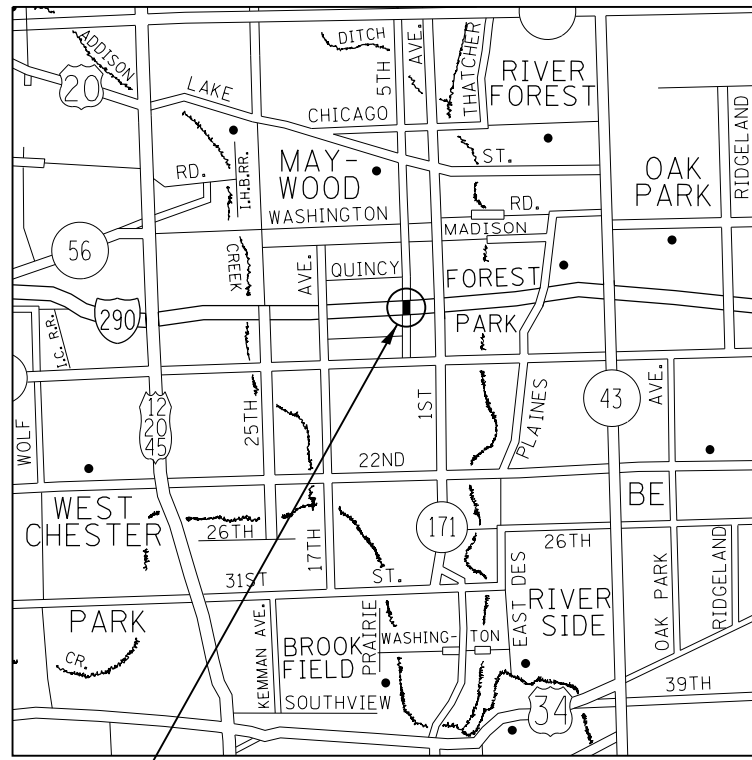
TRAFFIC DATA: (I-290)
SPEED LIMIT = 55 MPH
2014 ADT = 181,900

TRAFFIC DATA: (PAULINA AVE.)
SPEED LIMIT = 30 MPH
2014 ADT = 3,450

LOCATION 2

R 12 E

T 39 N



PROVISO TOWNSHIP

5TH AVE. OVER I-290
VILLAGE OF MAYWOOD
(SN 016-0692)

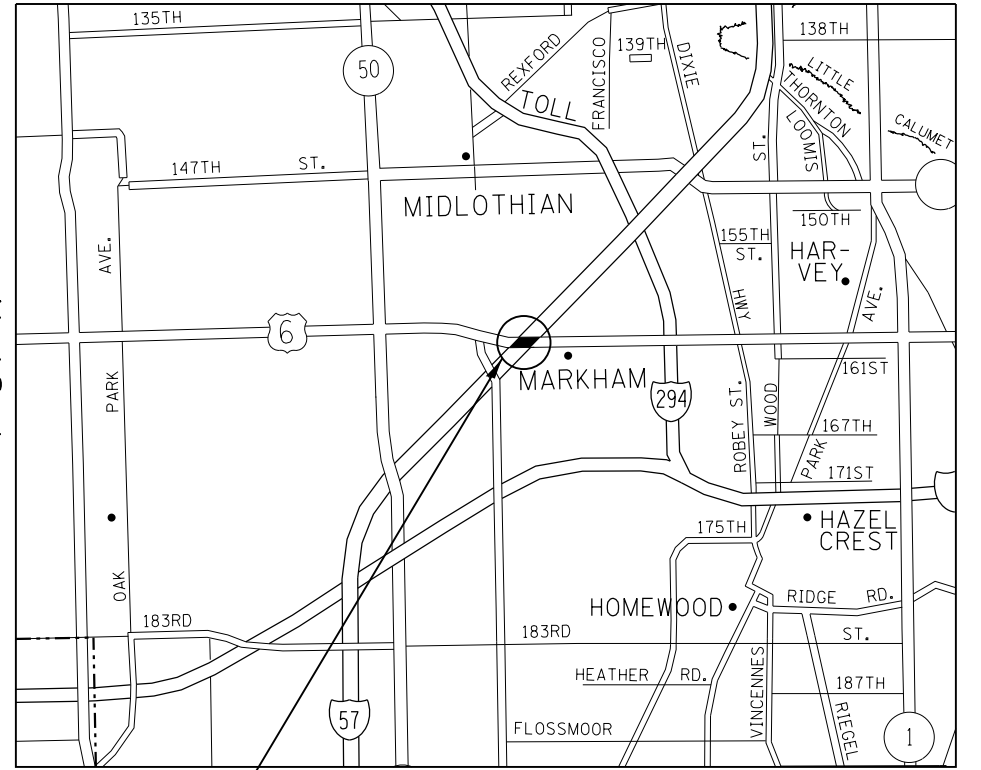
TRAFFIC DATA: (I-290)
SPEED LIMIT = 55 MPH
2014 ADT = 185,700

TRAFFIC DATA: (5TH AVE.)
SPEED LIMIT = 25 MPH
2014 ADT = 8,550

LOCATION 3

R 13 E | R 14 E

T 37 N



BREMEN TOWNSHIP

159TH ST OVER I-57
VILLAGE OF MARKHAM
(SN 016-1013)

TRAFFIC DATA: (I-57)
SPEED LIMIT = 55 MPH
2014 ADT = 84,400

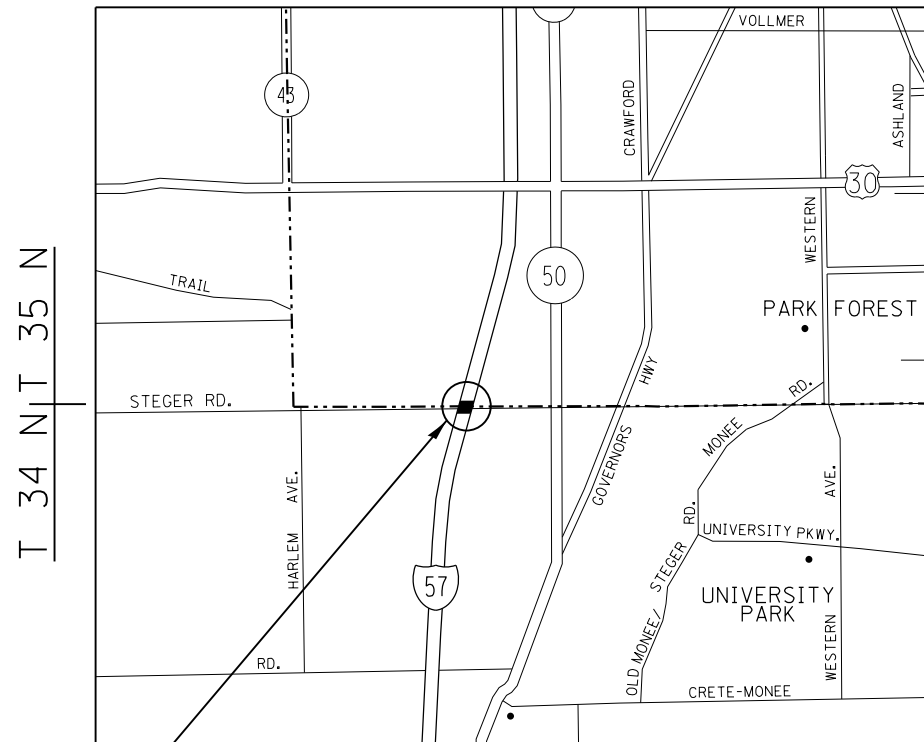
TRAFFIC DATA: (159TH ST.)
SPEED LIMIT = 45 MPH
2013 ADT = 26,900

FILE NAME =	USER NAME = pyrzenowski	DESIGNED -	REVISED -	STATE OF ILLINOIS DEPARTMENT OF TRANSPORTATION	SCALE:	SHEET	OF	SHEETS	STA.	TO	STA.	F.A. RTÉ.	SECTION	COUNTY	TOTAL SHEETS	SHEET NO.
Default		CHECKED -	REVISED -									VAR.	2015-058I	VARIOUS	21	4
		DATE -	REVISED -									CONTRACT NO. 62B23				
												ILLINOIS FED. AID PROJECT				



LOCATION 4

R 13 E | R 14 E



MONEE & RICH TOWNSHIPS

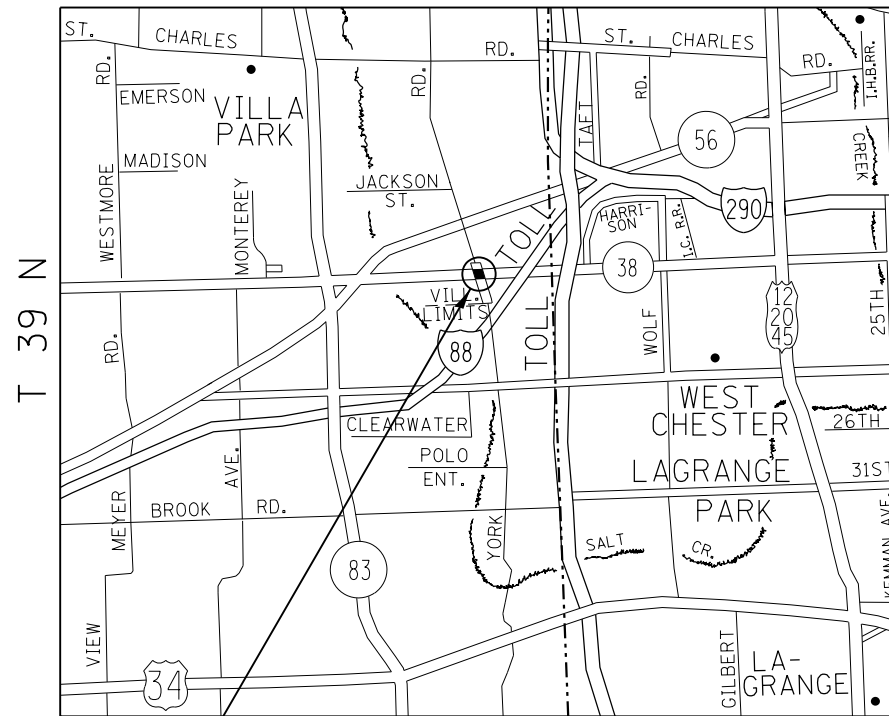
STEGER RD OVER I-57
VILLAGE OF UNIVERSITY PARK
(SN 016-1108)

TRAFFIC DATA: (I-57)
SPEED LIMIT = 70 MPH
2013 ADT = 44,300

TRAFFIC DATA: (STEGER RD.)
SPEED LIMIT = 45 MPH
2014 ADT = 3,950

LOCATION 5

R 11 E | R 12 E



YORK TOWNSHIP

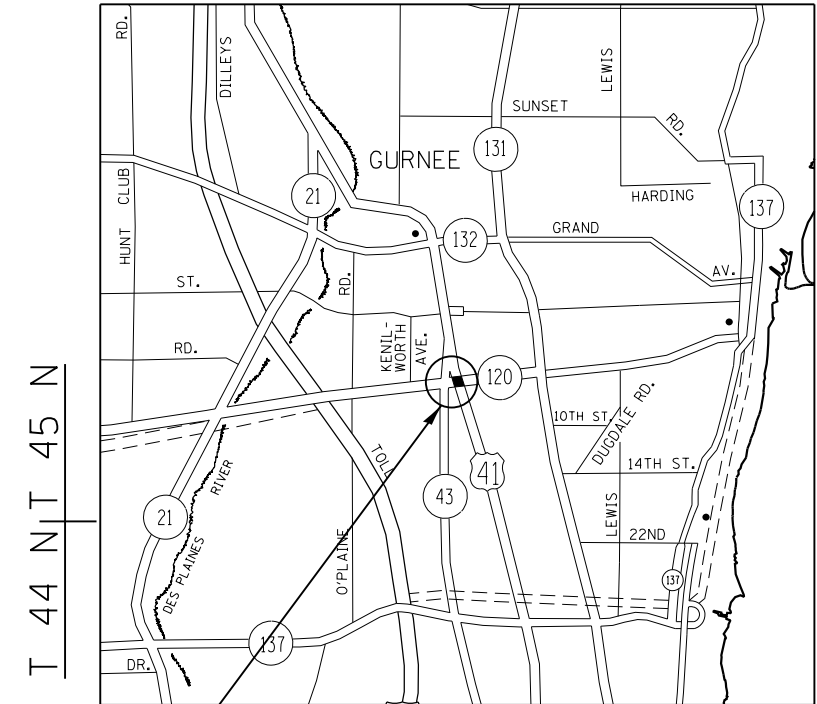
YORK RD. OVER IL 38
VILLAGE OF YORKFIELD
(SN 022-0067)

TRAFFIC DATA: (IL 38)
SPEED LIMIT = 55 MPH
2013 ADT = 54,700

TRAFFIC DATA: (YORK RD.)
SPEED LIMIT = 45 MPH
2008 ADT = 19,500

LOCATION 6

R 11 E | R 12 E



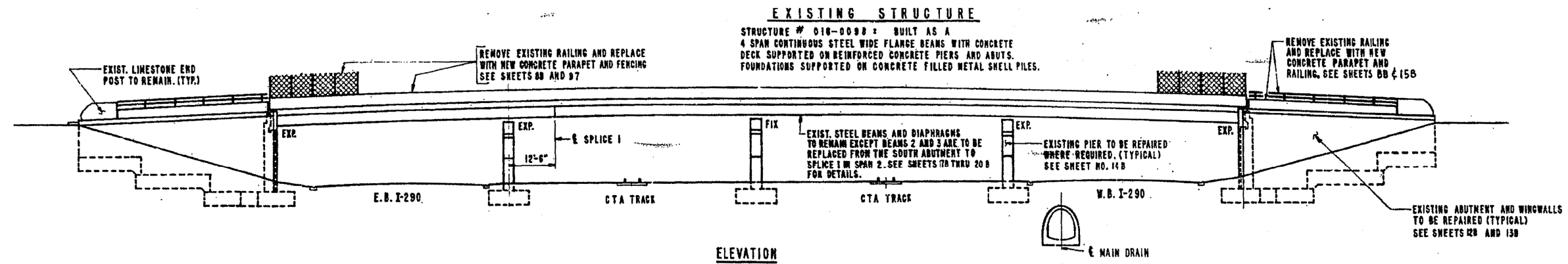
WARREN TOWNSHIP

IL 120 OVER US 41
VILLAGE OF PARK CITY
(SN 049-0050)

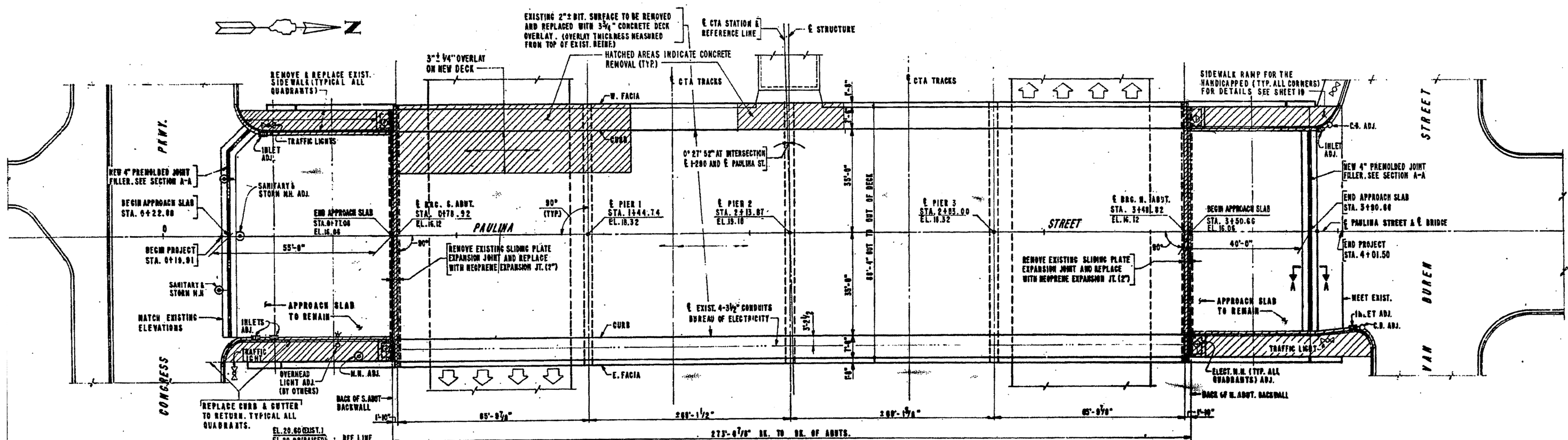
TRAFFIC DATA: (US 41)
SPEED LIMIT = 55 MPH
2013 ADT = 32,100

TRAFFIC DATA: (IL-120)
SPEED LIMIT = 45 MPH
2013 ADT = 29,800

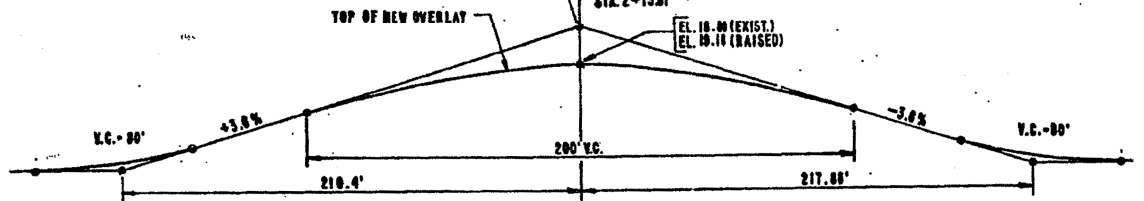
FILE NAME =	USER NAME = pyznowskirb	DESIGNED -	REVISED -	STATE OF ILLINOIS DEPARTMENT OF TRANSPORTATION	SCALE:	SHEET OF SHEETS	STA. TO STA.	F.A. RTÉ.	SECTION	COUNTY	TOTAL SHEETS	SHEET NO.
pw:\IL\084EBIDINTEG\illinois.gov\PWIDOT\Documents\DOT Offices\District 1\Projects\DI40115\Drawings\Design\DI40115-shr-plan.dgn	DRAWN	REVISÉD -	VAR.					2015-0581	VARIOUS	21	5	
Default	PLOT SCALE = 100.0000' / in.	CHECKED -	REVISED -					CONTRACT NO. 62B23				
	PLOT DATE = 8/26/2015	DATE -	REVISED -					ILLINOIS FED. AID PROJECT				



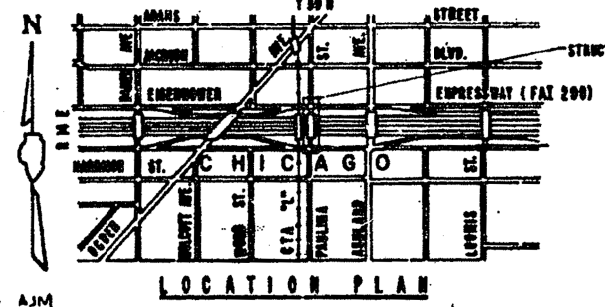
ELEVATION



PLAN (EL. SHOWN ARE FINAL EL.)



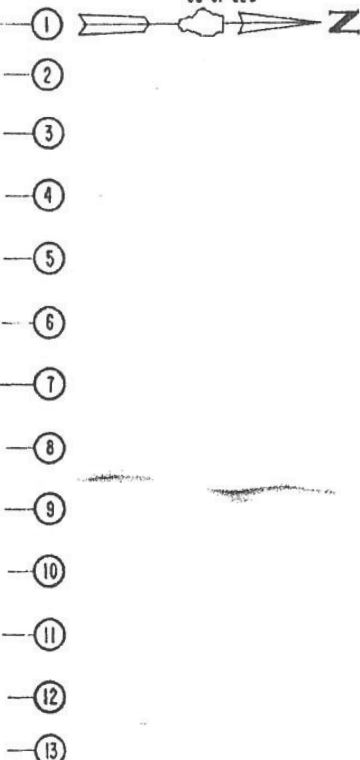
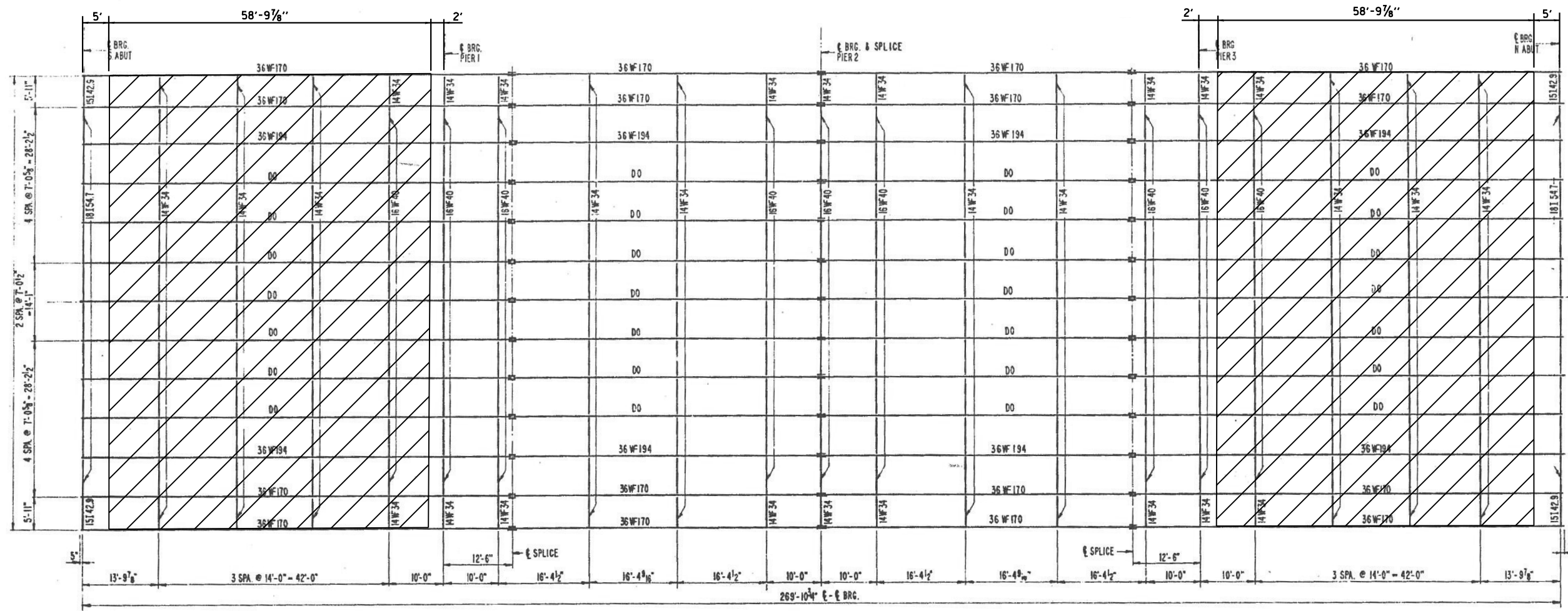
PROFILE PAULINA STREET
PROFILE SHOWN INCLUDES SCARIFICATION TO TOP OF EXIST. REIN. THICKNESS OF 3/4" TO TOP OF NEW OVERLAY AND BRIDGE RAISING OF 3"



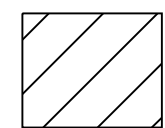
LOCATION PLAN

FOR INFORMATION ONLY

FILE NAME =	USER NAME = pyzzenowskirb	DESIGNED -	REVISED -	STATE OF ILLINOIS DEPARTMENT OF TRANSPORTATION	GENERAL PLAN & ELEVATION SN 016-0098	F.A. RTE.	SECTION	COUNTY	TOTAL SHEETS	SHEET NO.	
pw\110848EIDINTEG\111nois.gov\PIWDDT\Documents\DOT Offices\District 1\Projects\DI4011\Drawings\Design\DI40115-shr-plan.dgn	PLOT SCALE = 100.0000' / 1"	CHECKED -	REVISED -			VAR.	2015-0581	VARIOUS	21	6	
Default	PLOT DATE = 8/26/2015	DATE -	REVISED -			SCALE: SHEET 1 OF 2 SHEETS STA. TO STA.		CONTRACT NO. 62B23			
						ILLINOIS FED. AID PROJECT					



EXISTING FRAMING



**HATCHED AREA INDICATES
= PERMANENT PROTECTIVE
SHIELDING**

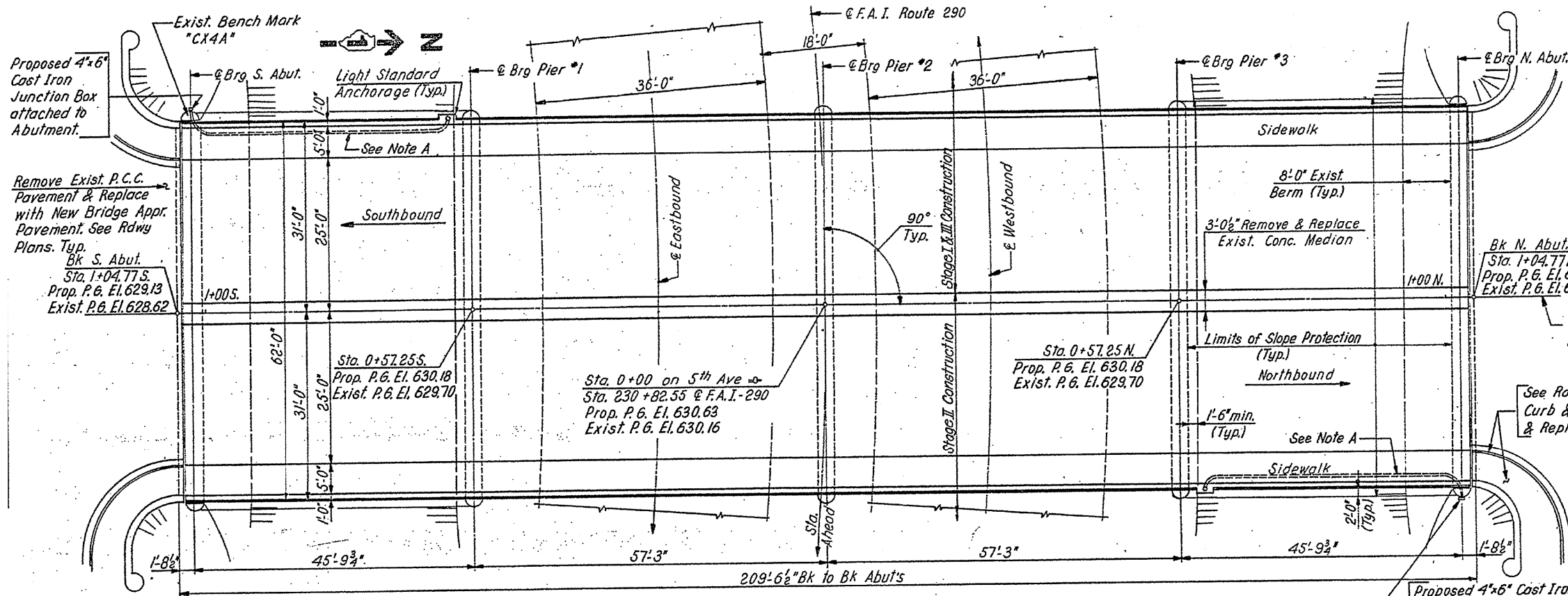
FILE NAME =	USER NAME = pyrzezowski	DESIGNED -	REVISED -
pw:\11084EBID\INTEG.illinois.gov\PIWIDOT\Documents\DOT Offices\District 1\Projects\DI4011\DRAWING\Design\DI40115-shr-plan.dgn		REVISED -	REVISED -
Default	PLOT SCALE = 100.0000' / in.	CHECKED -	REVISED -
	PLOT DATE = 8/26/2015	DATE -	REVISED -

**STATE OF ILLINOIS
DEPARTMENT OF TRANSPORTATION**

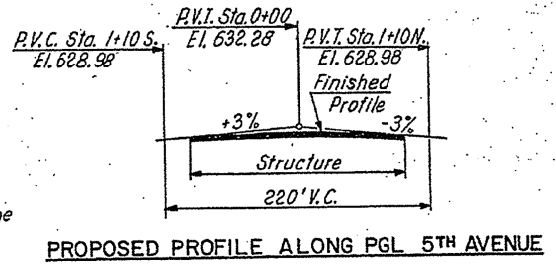
**FRAMING PLAN
SN 016-0098**

SCALE: SHEET 2 OF 2 SHEETS STA. TO STA.

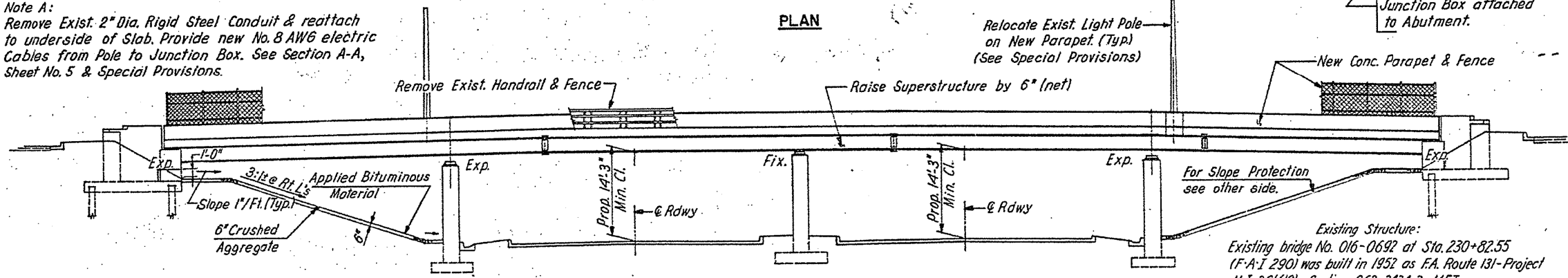
F.A. RTE.	SECTION	COUNTY	TOTAL SHEETS	SHEET NO.
VAR.	2015-0581	VARIOUS	21	7
			CONTRACT NO. 62B23	
ILLINOIS FED. AID PROJECT				



BENCH MARK A standard County bronze disk set on the Southwest Pier of the Fifth Ave. overpass. 32 feet West of the centerline of Fifth Ave.; and 31 feet North of the centerline of Balaan Drive. El. 629.00'



Note A:
Remove Exist. 2" Dia. Rigid Steel Conduit & reattach to underside of Slab. Provide new No. 8 AWG electric Cables from Pole to Junction Box. See Section A-A, Sheet No. 5 & Special Provisions.

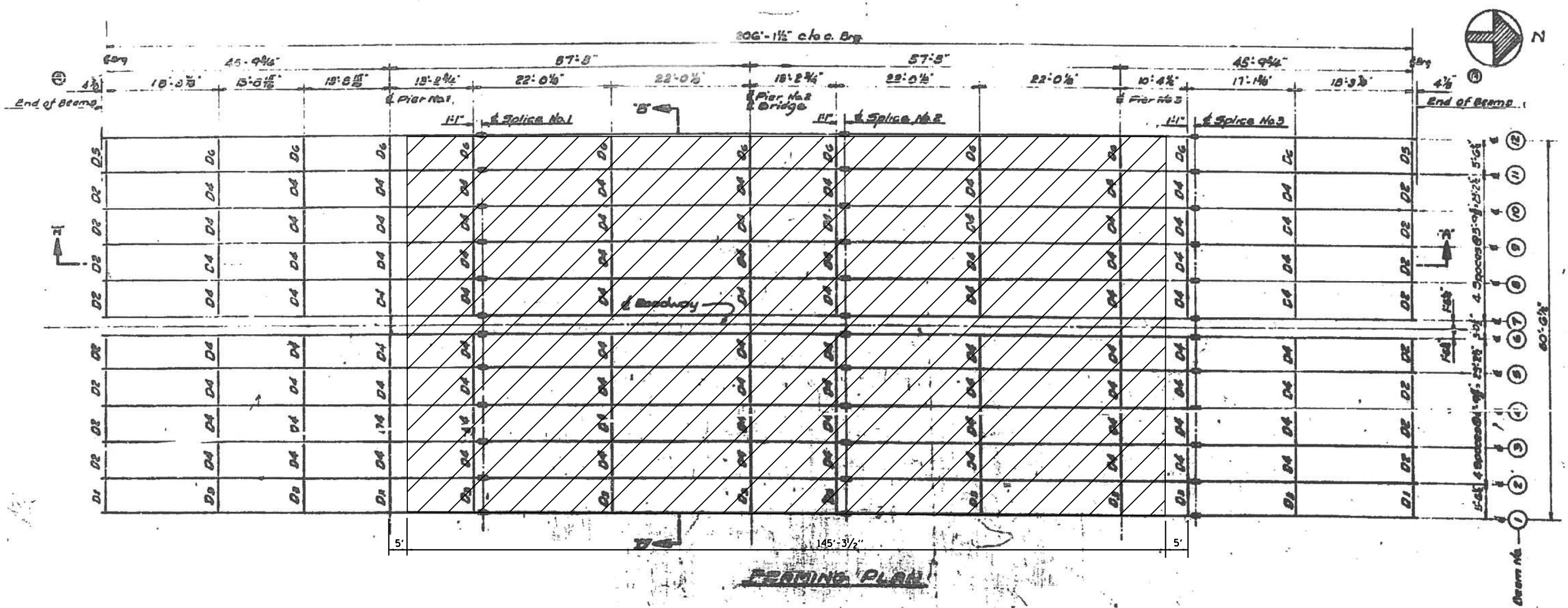


TYP DETAILS OF SLOPE PAVING
(See Special Provisions)

ELEVATION

FOR INFORMATION ONLY

FILE NAME =	USER NAME = pyzzenowskirb	DESIGNED -	REVISED -	STATE OF ILLINOIS DEPARTMENT OF TRANSPORTATION	GENERAL PLAN & ELEVATION SN 016-0692	F.A. RTE.	SECTION	COUNTY	TOTAL SHEETS	SHEET NO.
pw\1\084EBIDINTEG\111nois.gov\PIWIDOT\Documents\IDOT Offices\District 1\Projects\014011\Drawings\Design\0140115-sh1-plan.dgn	CHECKED -	REVISED -	VAR.			2015-0581	VARIOUS	21	8	
PLOT SCALE = 100.0000' / 1" =	DATE -	REVISED -	CONTRACT NO. 62B23							
Default	PLOT DATE = 8/26/2015	DATE -	SCALE:			SHEET 1	OF 2 SHEETS	STA.	TO STA.	ILLINOIS FED. AID PROJECT



FRAMING PLAN

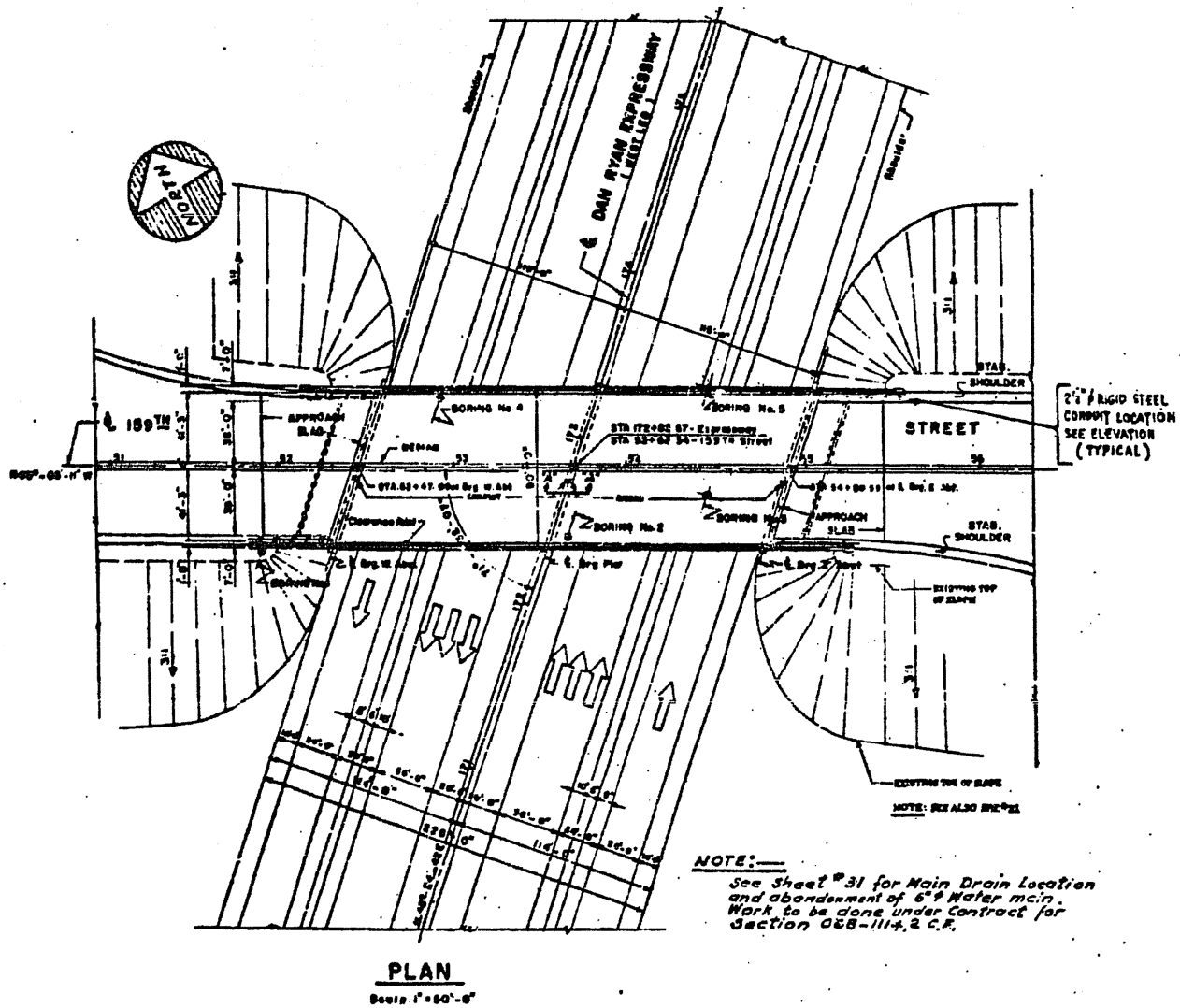
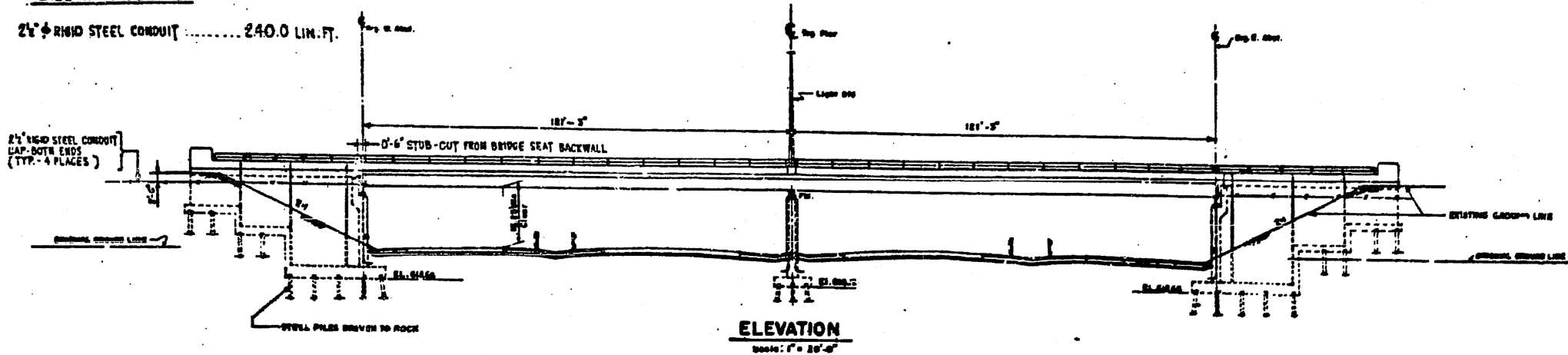
 **HATCHED AREA INDICATES
= PERMANENT PROTECTIVE
SHIELDING**

FILE NAME =	USER NAME = pyzzenowskirb	DESIGNED -	REVISED -	STATE OF ILLINOIS DEPARTMENT OF TRANSPORTATION	FRAMING PLAN SN 016-0692	F.A. RTE.	SECTION	COUNTY	TOTAL SHEETS	SHEET NO.	
pw\11084EBIDINTEG.illinois.gov\PIWIDOT\Documents\IDOT Offices\District 1\Projects\DI40115\Design\DI40115-shr-plan.dgn		CHECKED -	REVISED -			VAR.	2015-0581	VARIOUS	21	9	
PLOT SCALE = 100.0000' / in.		DATE -	REVISED -			CONTRACT NO. 62B23					
Default		PLOT DATE = 8/26/2015	REVISED -			ILLINOIS FED. AID PROJECT					

BILL OF MATERIAL

24" RIGID STEEL CONDUIT 240.0 LIN. FT.

2 SPAN CONTINUOUS COMPOSITE WELDED PLATE GIRDER



PLAN
Scale: 1" = 50'-0"

FOR INFORMATION ONLY

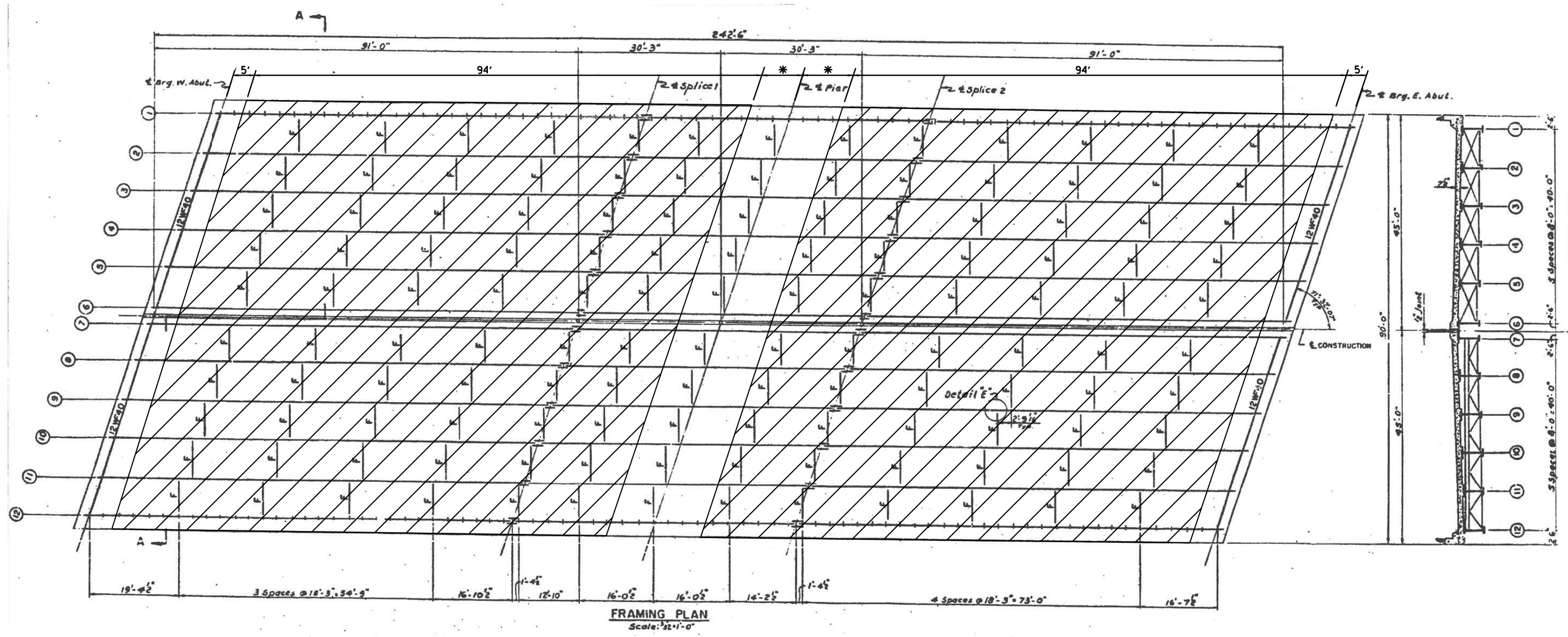
FILE NAME =	USER NAME = pyrzenowski	DESIGNED -	REVISED -
pw\11084EBIDINTEG.111nois.gov\PIWIDT\Documents\IDOT Offices\District 1\Projects\014011\Drawings\Design\0140115-shr-plan.dgn		CHECKED -	REVISED -
Default	PLOT DATE = 8/26/2015	DATE -	REVISED -

**STATE OF ILLINOIS
DEPARTMENT OF TRANSPORTATION**

**GENERAL PLAN & ELEVATION
SN 016-1013**

SCALE: SHEET 1 OF 2 SHEETS STA. TO STA.

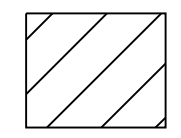
F.A. RTE.	SECTION	COUNTY	TOTAL SHEETS	SHEET NO.
VAR.	2015-0581	VARIOUS	21	10
			CONTRACT NO. 62B23	
ILLINOIS FED. AID PROJECT				



FRAMING PLAN
Scale: 1/2" = 1'-0"

SECTION A-A
Scale: 1/2" = 1'-0"

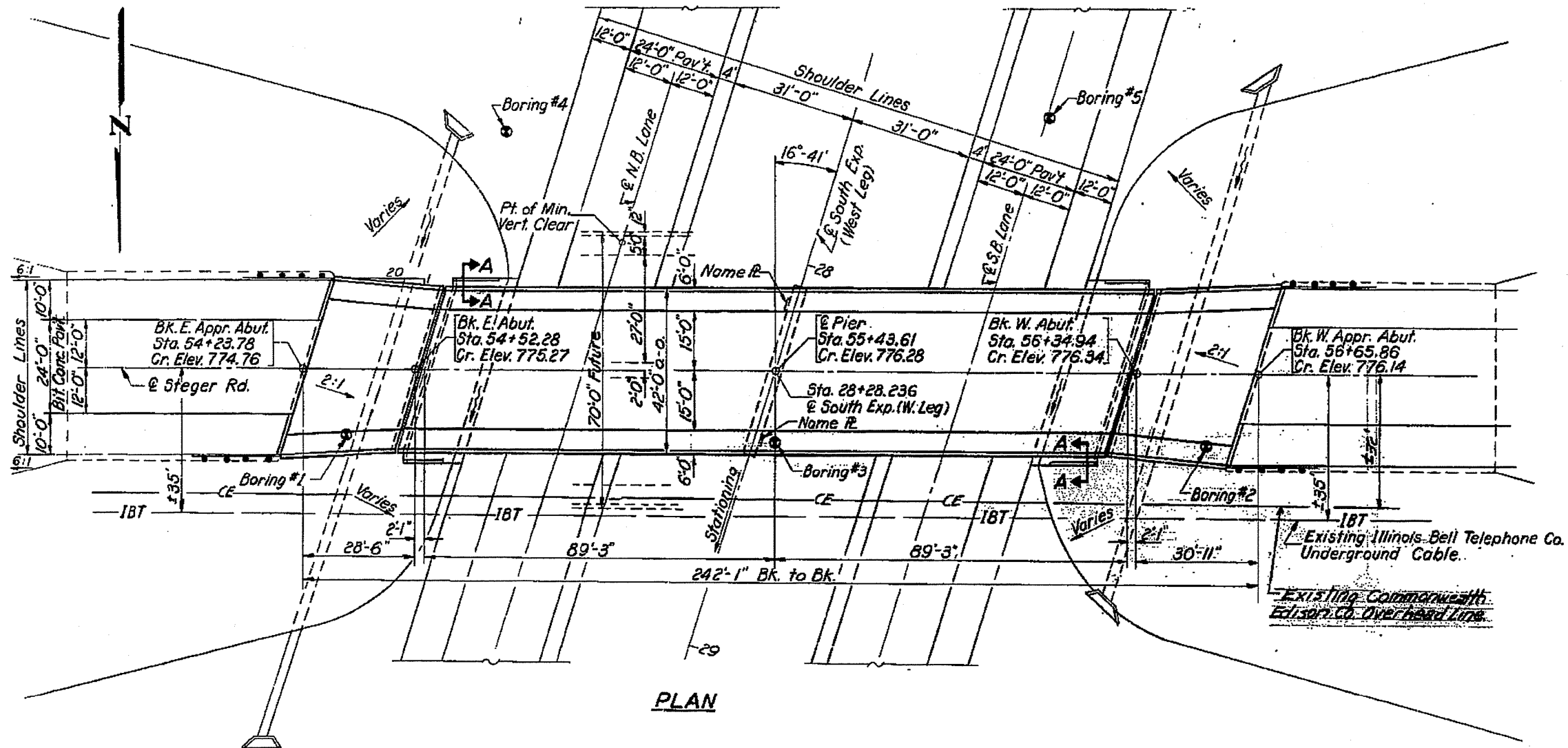
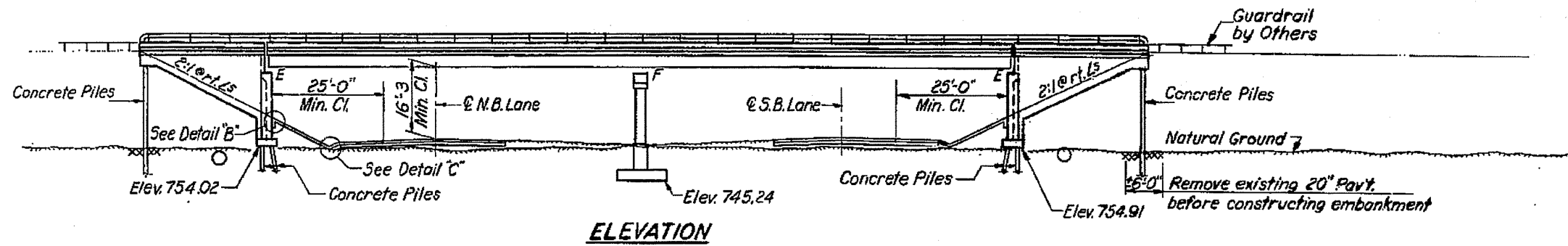
* = HALF SHOULDER WIDTH = 6'



**HATCHED AREA INDICATES
= PERMANENT PROTECTIVE
SHIELDING**

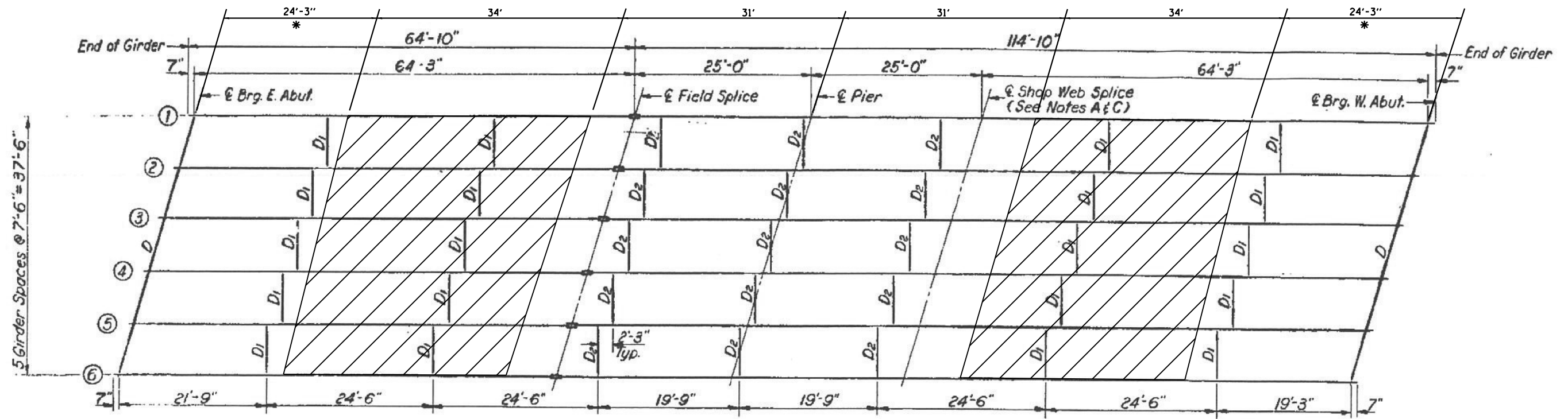
FILE NAME =	USER NAME = pyrzenowski	DESIGNED -	REVISED -	STATE OF ILLINOIS DEPARTMENT OF TRANSPORTATION	FRAMING PLAN SN 016-1013			F.A. RTE.	SECTION	COUNTY	TOTAL SHEETS	SHEET NO.
pw:\IL\084EBIDINTEG\illinois.gov\PWIDOT\Documents\IDOT Offices\District 1\Projects\DI4011\Drawings\Design\DI40115-shr-plan.dgn		CHECKED -	REVISED -					VAR.	2015-0581	VARIOUS	21	11
Default	PLOT SCALE = 100.0000' / in.	DATE -	REVISED -		SCALE:	SHEET 2	OF 2 SHEETS	STA.	TO STA.	CONTRACT NO. 62B23		
	PLOT DATE = 8/26/2015				ILLINOIS FED. AID PROJECT							

STATE OF ILLINOIS
DEPARTMENT OF PUBLIC WORKS & BUILDINGS
DIVISION OF HIGHWAYS



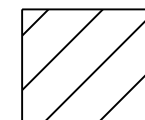
FOR INFORMATION ONLY

FILE NAME =	USER NAME = pyznowskirb	DESIGNED -	REVISED -	STATE OF ILLINOIS DEPARTMENT OF TRANSPORTATION	GENERAL PLAN & ELEVATION SN 016-1108			F.A. RTE.	SECTION	COUNTY	TOTAL SHEETS	SHEET NO.		
pw\11084EBIDINTEG.illinois.gov\PIWDD\Documents\DOT Offices\District 1\Projects\014011\Drawings\Design\0140115-shr-plan.dgn		CHECKED -	REVISED -		SCALE:	SHEET 1	OF 2 SHEETS	STA.	TO STA.	VAR.	2015-0581	VARIOUS	21	12
Default		DATE -	REVISED -		CONTRACT NO. 62B23									
	PLOT SCALE = 100.0000' / in.				ILLINOIS FED. AID PROJECT									



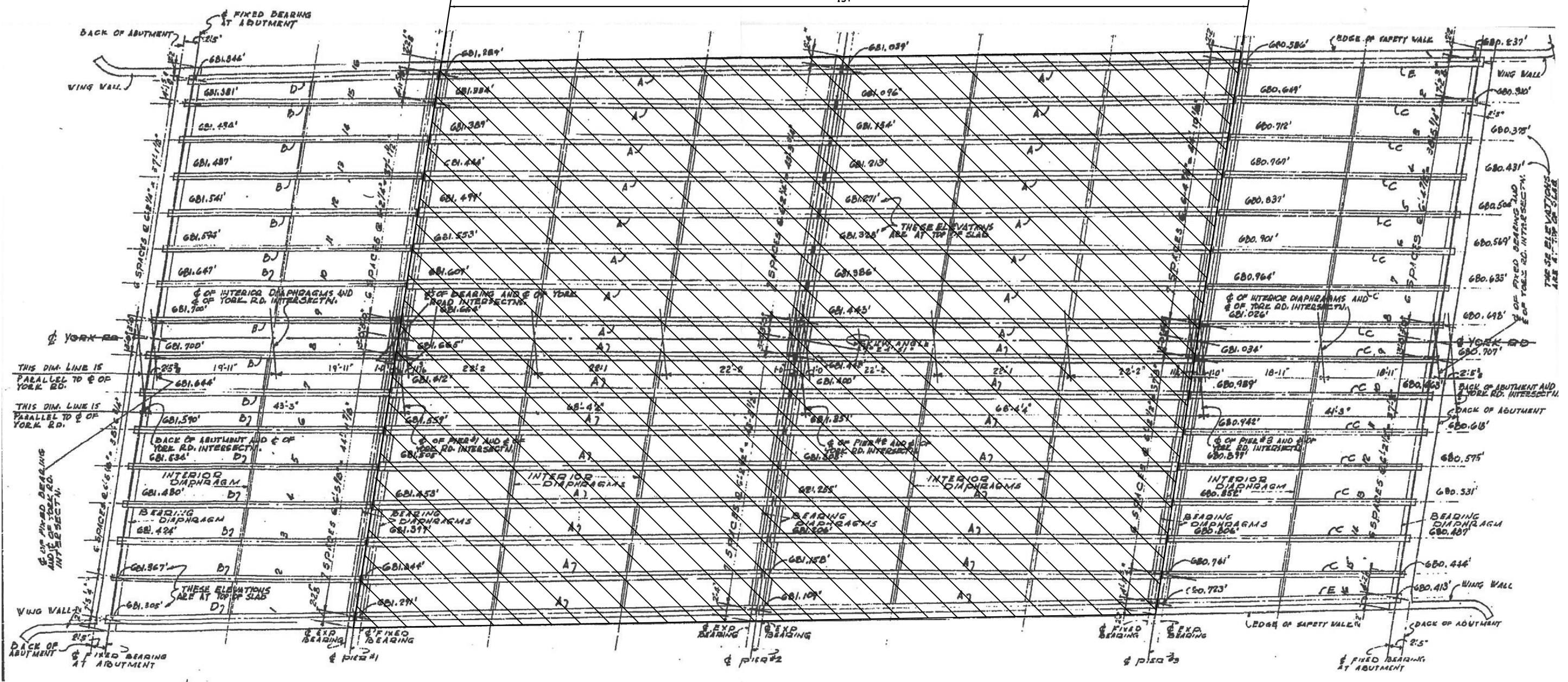
FRAMING PLAN

* = HALF SHOULDER WIDTH = 6'

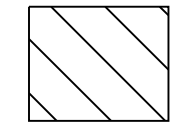


**HATCHED AREA INDICATES
= PERMANENT PROTECTIVE
SHIELDING**

FILE NAME =	USER NAME = pyzzenowskirb	DESIGNED -	REVISED -	STATE OF ILLINOIS DEPARTMENT OF TRANSPORTATION	FRAMING PLAN SN 016-1108			F.A. RTE.	SECTION	COUNTY	TOTAL SHEETS	SHEET NO.
pw\11084EBIDINTEG.illinois.gov\PIWIDOT\Documents\IDOT Offices\District 1\Projects\14011\BRAW\Design\140115-shf-plan.dgn	PLotted SCALE = 100.0000' / in.	CHECKED -	REVISED -					VAR.	2015-058I	VARIOUS	21	13
Default	PLOT DATE = 8/26/2015	DATE -	REVISED -		SCALE: SHEET 2 OF 2 SHEETS STA. TO STA.			CONTRACT NO. 62B23				
					ILLINOIS FED. AID PROJECT							



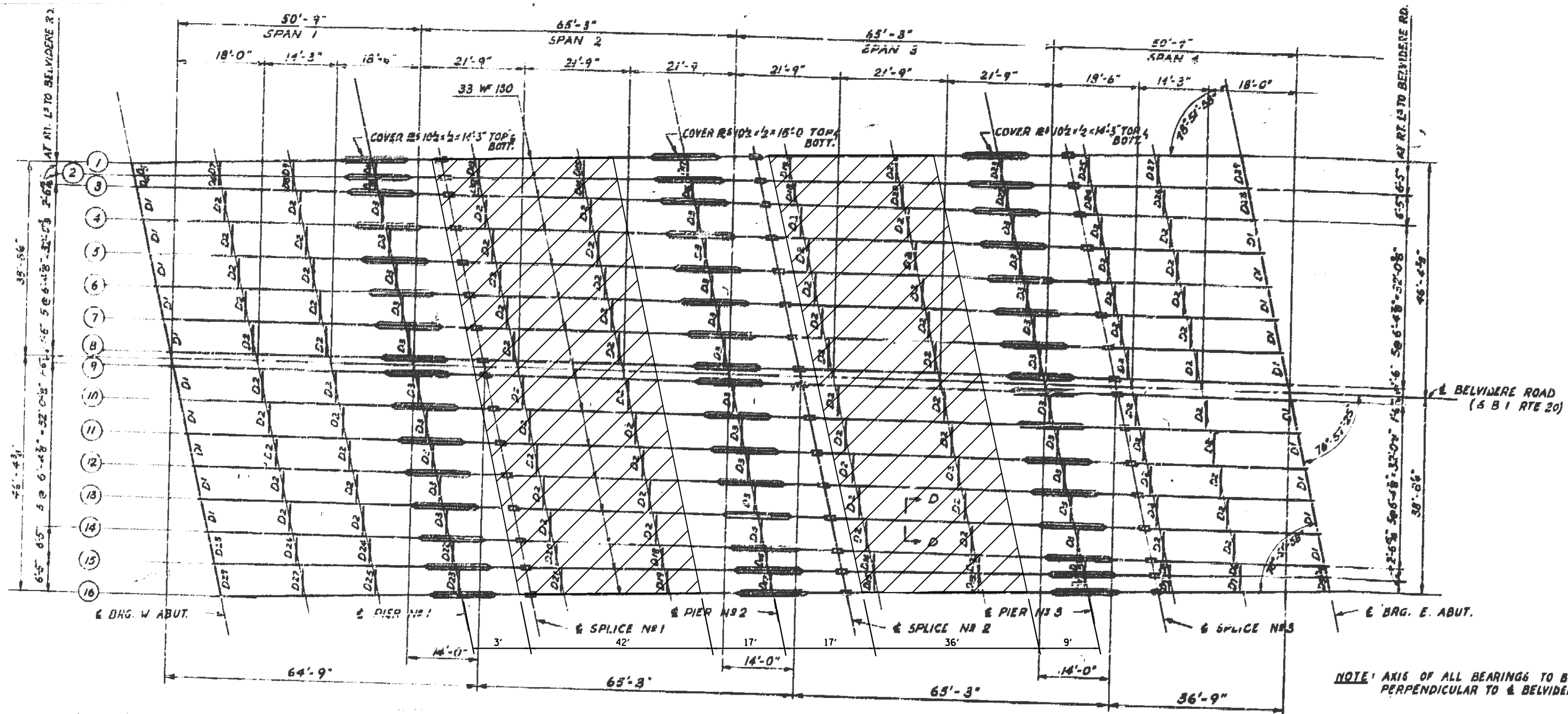
DEAM FRAMING PLAN
SCALE: 1/8" = 1'-0"



= HATCHED AREA INDICATES DEBRIS REMOVAL

NOTE:
REMOVAL OF PROTECTIVE SHIELD INCLUDED IN THE COST OF "DEBRIS REMOVAL"

FILE NAME =	USER NAME = pyznanowski	DESIGNED -	REVISED -	STATE OF ILLINOIS DEPARTMENT OF TRANSPORTATION	FRAMING PLAN SN 022-0067	F.A. RTE.	SECTION	COUNTY	TOTAL SHEETS	SHEET NO.	
pw\1\084EBIDINTEG\11\inois.gov\PIWIDOT\Documents\DOT Offices\District 1\Projects\014011\BRAW\Design\0140115-shr-plan.dgn		CHECKED -	REVISED -			VAR.	2015-0581	VARIOUS	21	15	
PLOT SCALE = 100.0000' / in.		DATE -	REVISED -			CONTRACT NO. 62B23					
Default		PLOT DATE = 8/26/2015	REVISED -			ILLINOIS FED. AID PROJECT					



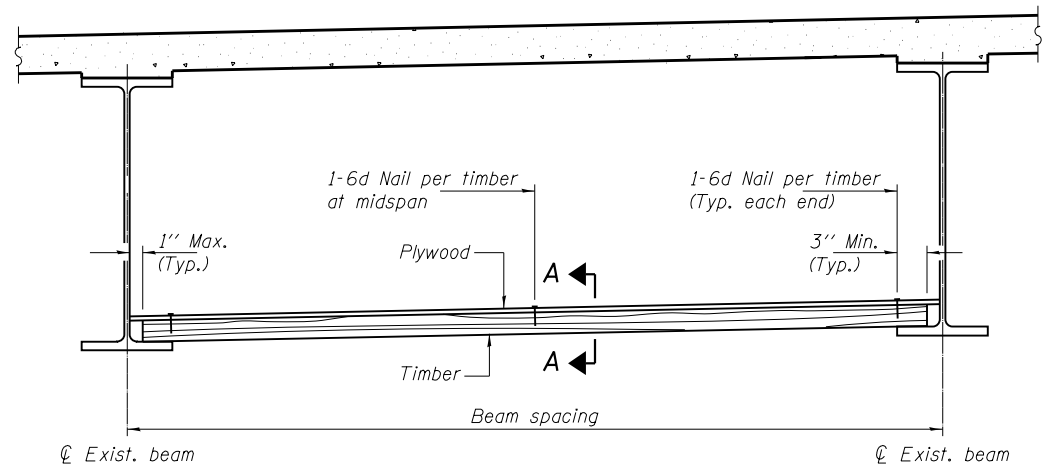
PLAN OF STRUCTURAL STEEL
SCALE: 1" = 15'-0"



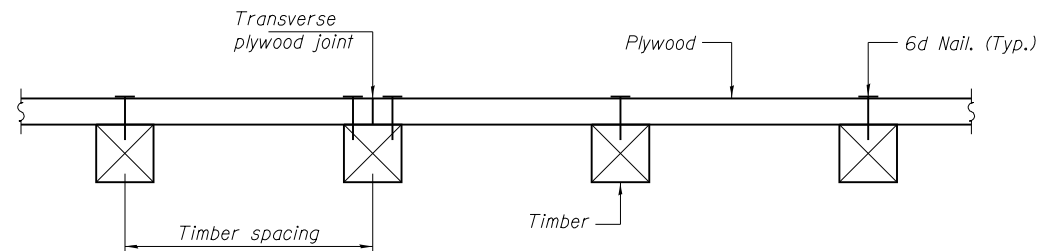
NOTE: AXIS OF ALL BEARINGS TO BE PERPENDICULAR TO & BELVIDERE RD.

 HATCHED AREA INDICATES
= PERMANENT PROTECTIVE
SHIELDING

FILE NAME =	USER NAME = pyrzenowskirb	DESIGNED -	REVISED -	STATE OF ILLINOIS DEPARTMENT OF TRANSPORTATION	FRAMING PLAN SN 049-0050	F.A. RTE.	SECTION	COUNTY	TOTAL SHEETS	SHEET NO.	
pw\11084EBIDINTEG\111nois.gov\PIWIDOT\Documents\IDOT Offices\District 1\Projects\DI40115\Design\DI40115-shr-plan.dgn		CHECKED -	REVISED -			VAR.	2015-0581	VARIOUS	21	17	
PLOT SCALE = 100.0000' / in.		DATE -	REVISED -			CONTRACT NO. 62B23					
Default						ILLINOIS FED. AID PROJECT					



STEEL BEAMS



SECTION A-A

TIMBER SPACING

Beam Spacing (ft.)	Timber Sizes (in.)		
	4" x 4" with min. Fb=775 psi Fv=135 psi	4" x 6" with min. Fb=775 psi Fv=135 psi	6" x 6" with min. Fb=575 psi Fv=125 psi
	Maximum Timber Spacing (in.)		
4.5	16	16	16
4.75	16	16	16
5.0	16	16	16
5.25	16	16	16
5.5	16	16	16
5.75	16	16	16
6.0	16	16	16
6.25	12	16	16
6.5	12	16	16
6.75	12	16	16
7.0	8	16	16
7.25	8	16	16
7.5	8	16	16
7.75	8	16	16
8.0	8	12	16
8.25	8	12	16
8.5	6	12	12
8.75	6	12	12
9.0	6	8	12

BILL OF MATERIAL

Item	Unit	Total
Protective Shield (Permanent)	Sq. Yd.	4438

NOTES

See special provision for Permanent Protective Shield System.

Timber sizes shown are nominal sizes. Rough sawn timber of the dimensions shown will also be considered acceptable.

The minimum Fb and Fv values shown are the tabulated design values given in the National Design Specification for Wood Construction for No. 2 Spruce-Pine-Fir without adjustment factors applied. Better grades or other species with equal or higher allowable stresses will also be considered acceptable.

The timber spacings shown have been determined using allowable stresses with all adjustment factors necessary for the anticipated service conditions.

All timber shall be treated.

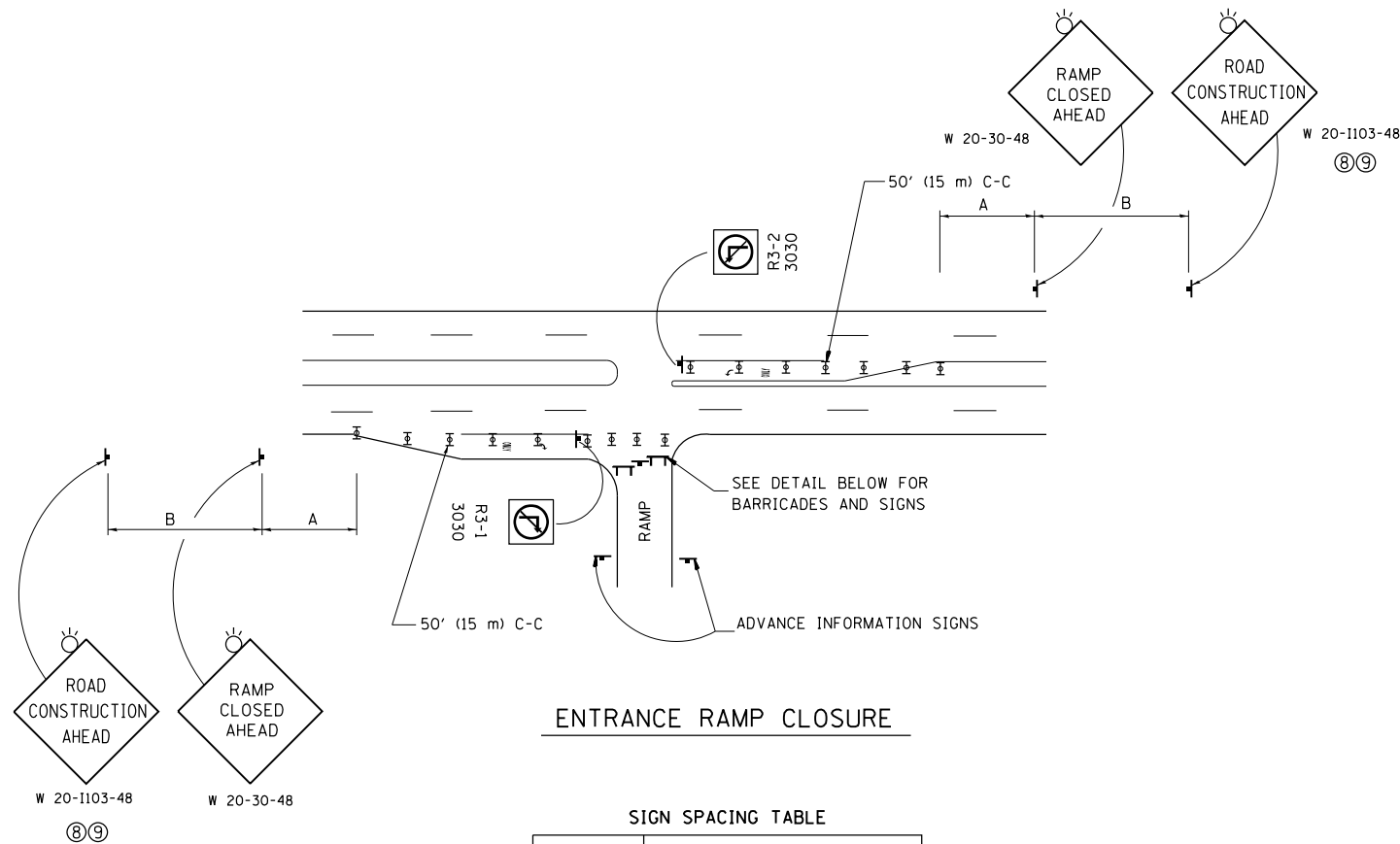
Plywood shall be 5/8 " Exterior type plywood.

Plywood shall be placed such that the face grain is perpendicular to the timber supports. When less than a full sheet (4' width) of plywood is used, the width of the strip used shall not be less than 2'.

Transverse plywood joints shall be supported by timbers.

When 4" x 6" timbers are used, they shall be placed such that the wide face is horizontal and the narrow face is vertical.

Design load = 200 psf.

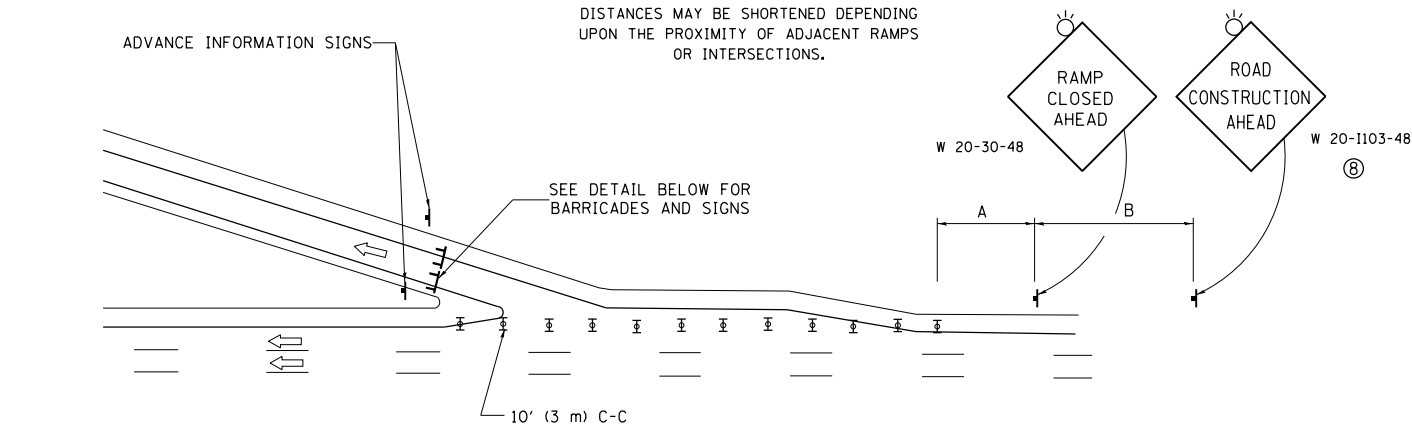


ENTRANCE RAMP CLOSURE

SIGN SPACING TABLE

FACILITY	DISTANCE BETWEEN SIGNS	
	A	B
EXPRESSWAY >24 HOURS	1000' (300 m)	1500' (450 m)
EXPRESSWAY <24 HOURS	500' (150 m)	500' (150 m)
ARTERIAL 55 MPH	500' (150 m)	500' (150 m)
ARTERIAL 50-45 MPH	350' (100 m)	350' (100 m)
ARTERIAL <45 MPH	200' (60 m)	200' (60 m)

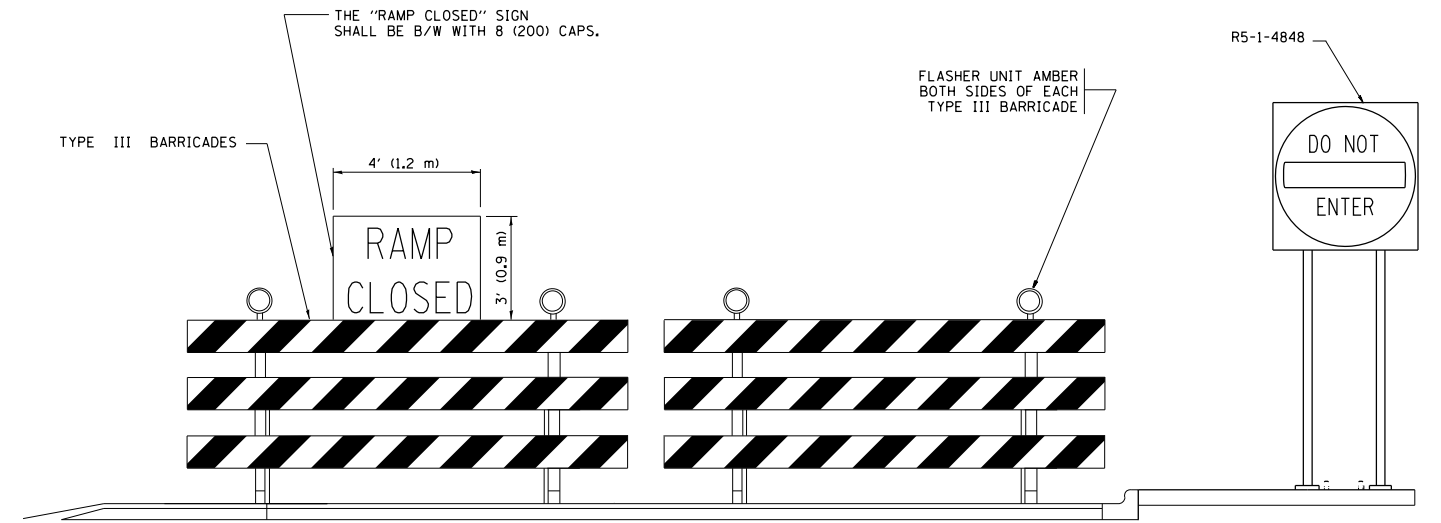
DISTANCES MAY BE SHORTENED DEPENDING UPON THE PROXIMITY OF ADJACENT RAMPS OR INTERSECTIONS.



EXIT RAMP CLOSURE

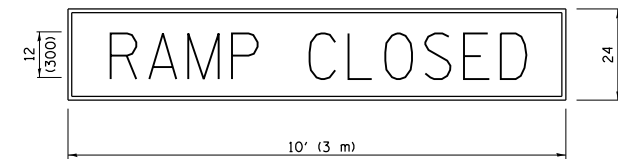
SYMBOLS

- ⊥ TYPE II BARRICADE OR DRUM WITH STEADY BURN MONO-DIRECTIONAL LIGHT
- ⊓ TYPE III BARRICADE WITH 2 FLASHING LIGHTS



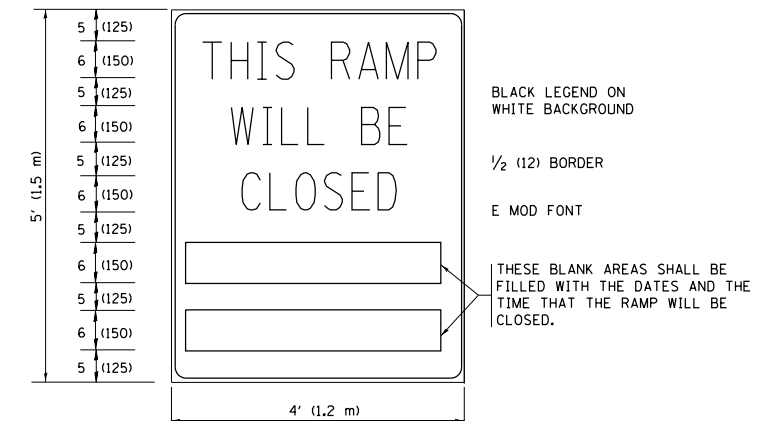
DETAIL FOR REQUIRED BARRICADES & SIGNS

RAMP CLOSURE ADVANCE WARNING SIGN



BLACK LEGEND ON ORANGE BACKGROUND MOUNTED DIAGONALLY
E MOD FONT
1 (25) BORDER
THESE SIGNS ARE REQUIRED ON ALL THE EXIT GUIDE SIGNS FOR EXIT RAMPS THAT WILL BE CLOSED FOR MORE THAN FOUR (4) CONSECUTIVE DAYS.

RAMP CLOSURE ADVANCE INFORMATION SIGN



BLACK LEGEND ON WHITE BACKGROUND
1/2 (12) BORDER
E MOD FONT

THESE BLANK AREAS SHALL BE FILLED WITH THE DATES AND THE TIME THAT THE RAMP WILL BE CLOSED.

THESE SIGNS ARE REQUIRED ON BOTH SIDES OF THE RAMP, MINIMUM OF 1 WEEK IN ADVANCE OF THE CLOSURE.

THESE SIGNS SHALL BE FABRICATED AND PAID FOR ACCORDING TO THE TEMPORARY INFORMATION SIGNING SPECIAL PROVISION

GENERAL NOTES:

- ① CONES MAY BE SUBSTITUTED FOR DRUMS OR TYPE II BARRICADES DURING DAY OPERATIONS. CONES SHALL BE A MINIMUM OF 28 (700) HIGH.
- ② STEADY BURN LIGHTS WILL NOT BE REQUIRED FOR DAY OPERATIONS.
- ③ A FLAGGER SHALL BE POSITIONED AT EACH CLOSED RAMP THAT IS OPEN TO CONSTRUCTION VEHICLES, PRECEDED BY A W20-7 FLAGGER WARNING SIGN.
- ④ ALL ROUTE MARKERS AND TRAILBLAZER ASSEMBLIES WHICH DIRECT MOTORISTS TO A CLOSED ENTRANCE RAMP SHALL BE COVERED WHEN THE RAMP IS CLOSED FOR MORE THAN FOUR (4) DAYS.
- ⑤ THE SIGNING AND BARRICADING WHICH IS REQUIRED BY THIS DETAIL SHALL BE INCLUDED IN THE COST OF TRAFFIC CONTROL AND PROTECTION (EXPRESSWAYS).
- ⑥ AUTHORIZATION FROM THE DISTRICT'S BUREAU OF TRAFFIC IS REQUIRED FOR ALL RAMP CLOSURES.
- ⑦ THE RAMP CLOSURE ADVANCE INFORMATION SIGNS SHALL BE ERECTED IF THE CLOSURE TIME EXCEEDS TWENTY-FOUR (24) HOURS. ADDITIONAL ADVANCE WARNING SIGNS ON EXIT GUIDE SIGNING WILL BE REQUIRED FOR EXIT RAMP CLOSURES THAT EXCEED FOUR (4) DAYS IN LENGTH
- ⑧ ROAD CONSTRUCTION AHEAD SIGNS MAY BE OMITTED WHEN THIS DETAIL IS USED IN CONJUNCTION WITH OTHER TRAFFIC CONTROL THAT ALREADY INCLUDES A ROAD CONSTRUCTION AHEAD SIGN.
- ⑨ ARTERIAL ROAD CONSTRUCTION AHEAD SIGNS SHALL BE INSTALLED ON THE LEFT SIDE OF TRAFFIC IF THE MEDIAN IS MORE THAN 10 FT WIDE.

ALL DIMENSIONS ARE IN INCHES (MILLIMETERS) UNLESS OTHERWISE SHOWN.

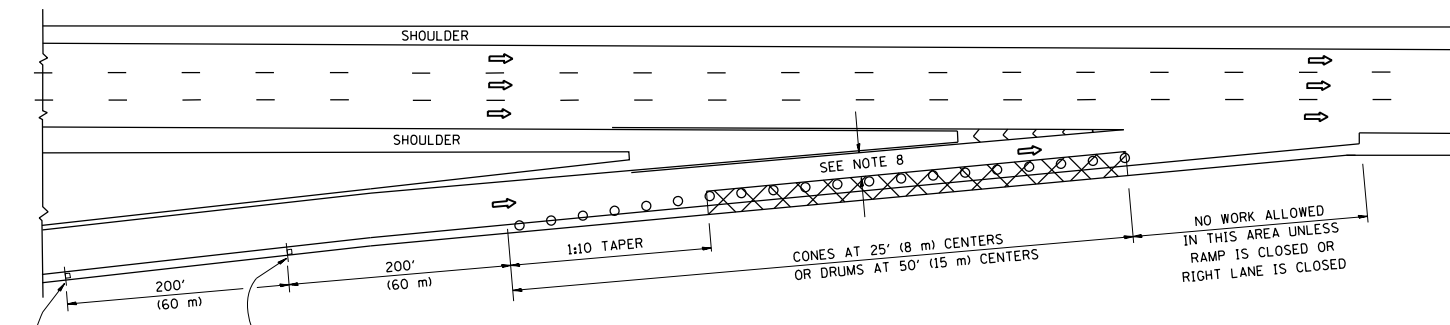
FILE NAME =	USER NAME = pyrzenowski	DESIGNED - DWS	REVISED - JAF 02-06
p:\11\084EBID\INTEG\illinois.gov\PIWIDOT\Documents\IDOT Offices\District 1\Projects\DI4015\Design\DI4015-shr-plan.dgn		CHECKED -	REVISED - SPB 01-07
		DATE - 02-83	REVISED - SPB 12-09
			REVISED - MD 06-13

**STATE OF ILLINOIS
DEPARTMENT OF TRANSPORTATION**

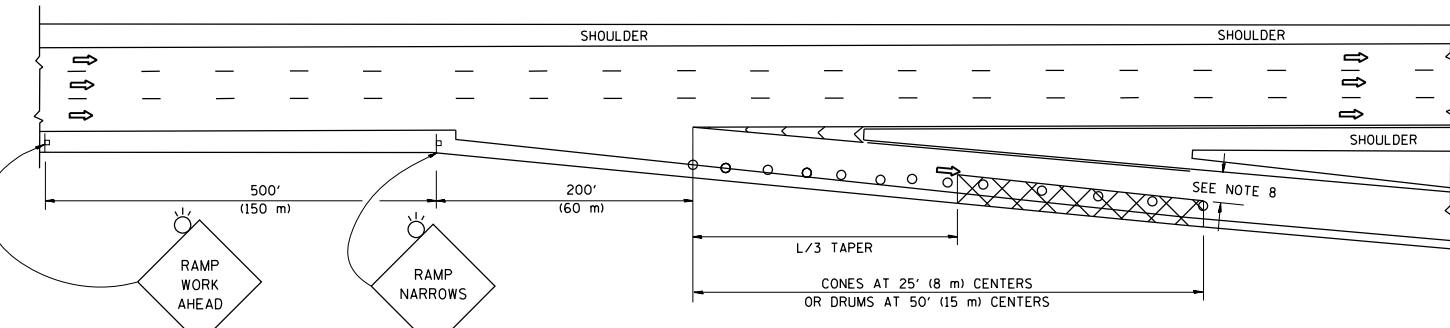
ENTRANCE AND EXIT RAMP CLOSURE DETAILS			
SCALE: NONE	SHEET NO. 1 OF 1 SHEETS	STA.	TO STA.

F.A. RTE.	SECTION	COUNTY	TOTAL SHEETS	SHEET NO.
VAR.	2015-058I	VARIOUS	21	19
TC-08		CONTRACT NO. 62B23		
FED. ROAD DIST. NO. 1 ILLINOIS FED. AID PROJECT				

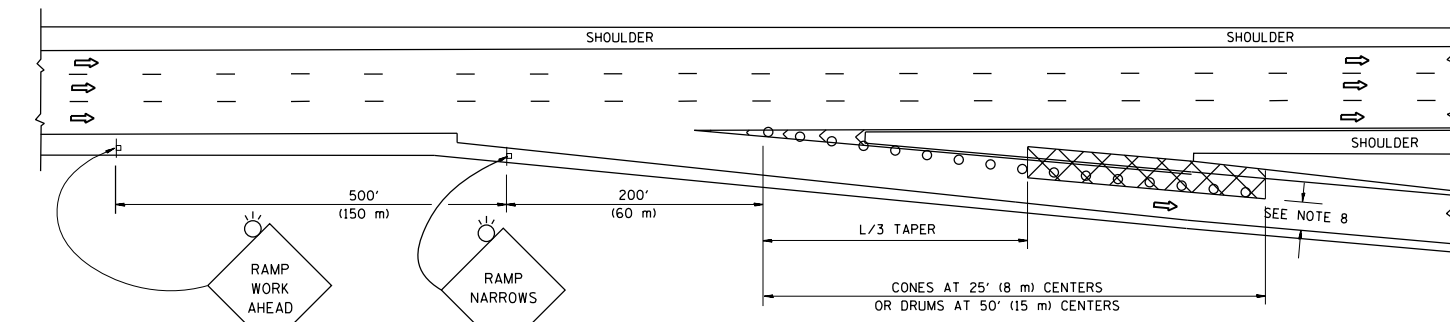
PARTIAL RAMP CLOSURE DETAILS



TYPICAL ENTRANCE RAMP



TYPICAL EXIT RAMP



TYPICAL EXIT RAMP

SYMBOLS

- ACTIVE WORK AREA
- SIGN ON PORTABLE OR PERMANENT SUPPORT
- FLAGGER WITH CONTROL SIGN
- TYPE II BARRICADE OR DRUM WITH STEADY BURN MONO-DIRECTIONAL LIGHT
- CONE, DRUM OR BARRICADE
- IMPACT ATTENUATOR OF TYPE AND TEST LEVEL SPECIFIED

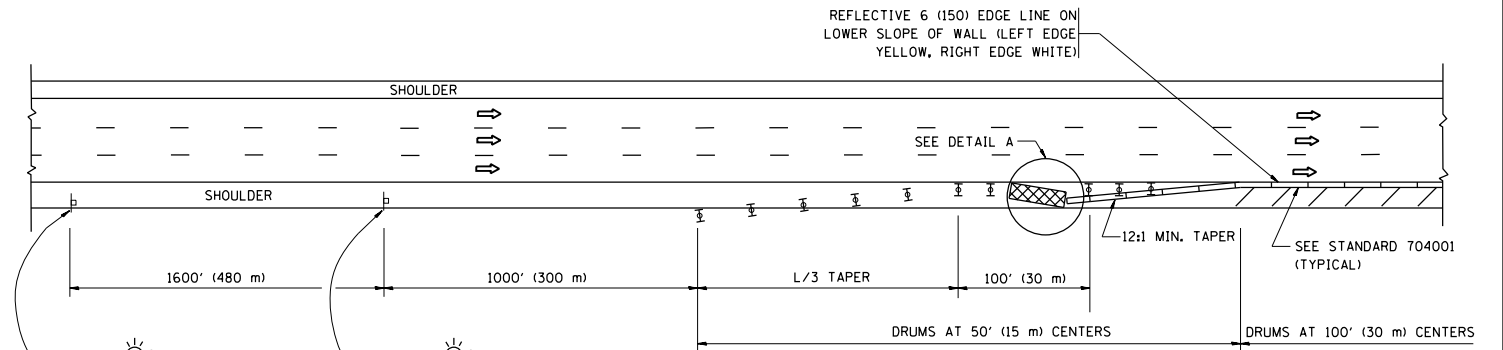
GENERAL NOTES

1. THE "L" DISTANCE EQUALS:

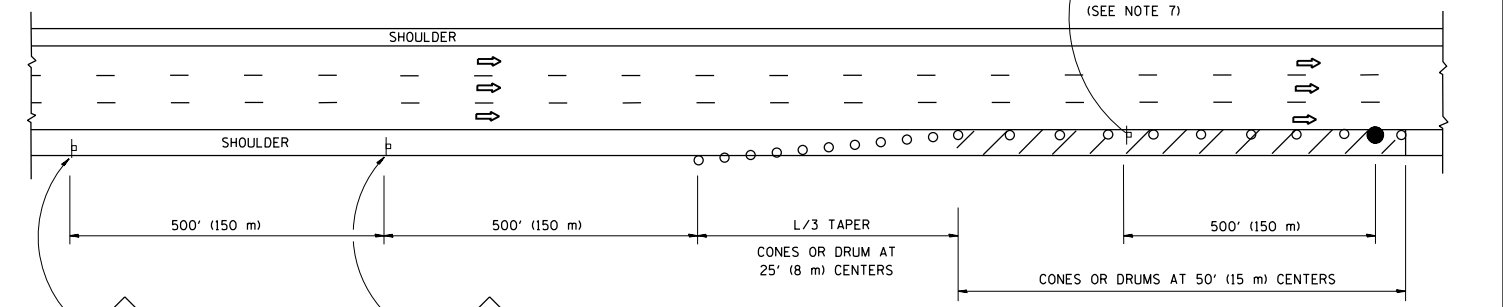
SPEED LIMIT	FORMULAS
45 mph (80 km/h)	METRIC ENGLISH
OR GREATER:	L=0.65(W)(S) L=(W)(S)

W = WIDTH OF OFFSET IN FEET (METERS)
S = NORMAL POSTED SPEED MPH (KM/H)
2. PLASTIC DRUMS WITH HIGH PERFORMANCE REFLECTIVE SHEETING AND STEADY BURNING LIGHTS ARE REQUIRED FOR ALL NIGHTTIME CLOSURES.
3. ALL SIGNS SHALL BE POST MOUNTED IF THE CLOSURE TIME EXCEEDS FOUR DAYS.
4. FLASHING LIGHTS SHALL BE USED DURING THE HOURS OF DARKNESS AND SHALL BE INSTALLED ABOVE THE FIRST TWO SETS OF SIGNS.

SHOULDER CLOSURE DETAILS

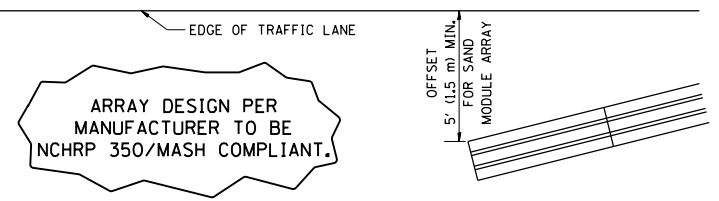


PERMANENT SHOULDER CLOSURE



DAYTIME SHOULDER CLOSURE

THIS DETAIL IS USED WHERE:
1. VEHICLES, EQUIPMENT, WORKERS OR THEIR ACTIVITIES ENCRANCH IN AN AREA CLOSER THAN 15' (4.5 m) TO THE EDGE OF PAVEMENT FOR A PERIOD IN EXCESS OF 15 MINUTES.



5. THE IMPACT ATTENUATOR, TEMPORARY IS NOT REQUIRED WHEN THE TEMPORARY CONCRETE BARRIER WALL IS PROTECTED BY OR IS TIED INTO THE EXISTING GUARDRAIL. IF OFFSET IS LESS THAN 5 FEET USE NARROW USE TYPE DEVICE TO MEET NCHRP350/MASH.
6. AUTHORIZATION FROM THE DISTRICT'S BUREAU OF TRAFFIC IS REQUIRED FOR ALL FREEWAY CLOSURES.
7. THE FLAGGER AND FLAGGER SIGN ARE REQUIRED AT THE ABOVE WORK SITES WHEN:
 - a. FOUR OR MORE WORK VEHICLES ENTER THE TRAFFIC LANES IN A ONE HOUR PERIOD.
 - b. THE WORK AVTIVITY REQUIRES FREQUENT ENCRACHMENT INTO THE LANE OPEN TO TRAFFIC.
 THE FLAGGER SHALL BE STATIONED APPROXIMATELY 100' (30 m) TO 200' (60 m) IN ADVANCE OF THE WORKERS.
8. 12' MIN. WIDTH TANGENT SECTION
16' MIN. WIDTH CURVE SECTION.

ALL DIMENSIONS ARE IN INCHES (MILLIMETERS) UNLESS OTHERWISE SHOWN.

FILE NAME =	USER NAME = pyrzenowski	DESIGNED -	REVISED - J.A.F. 12-06	STATE OF ILLINOIS DEPARTMENT OF TRANSPORTATION	TRAFFIC CONTROL DETAILS FOR FREEWAY SHOULDER CLOSURES AND PARTIAL RAMP CLOSURES	F.A. RTE.	SECTION	COUNTY	TOTAL SHEETS	SHEET NO.	
			REVISED - S.P.B. 01-07			VAR.	2015-0581	VARIOUS	21	21	
	PLOT SCALE = 100.0000' / 1" =	CHECKED -	REVISED - S.P.B. 12-09			TC-17		CONTRACT NO. 62B23			
	PLOT DATE = 8/26/2015	DATE - 11-96	REVISED - M.D. 06-13			SCALE: NONE		SHEET NO. 1 OF 1 SHEETS		STA. TO STA.	
FED. ROAD DIST. NO. 1 ILLINOIS FED. AID PROJECT											