

STATE OF ILLINOIS
DEPARTMENT OF TRANSPORTATION

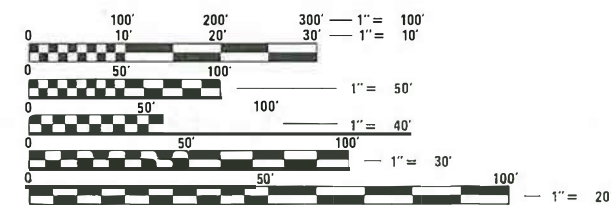
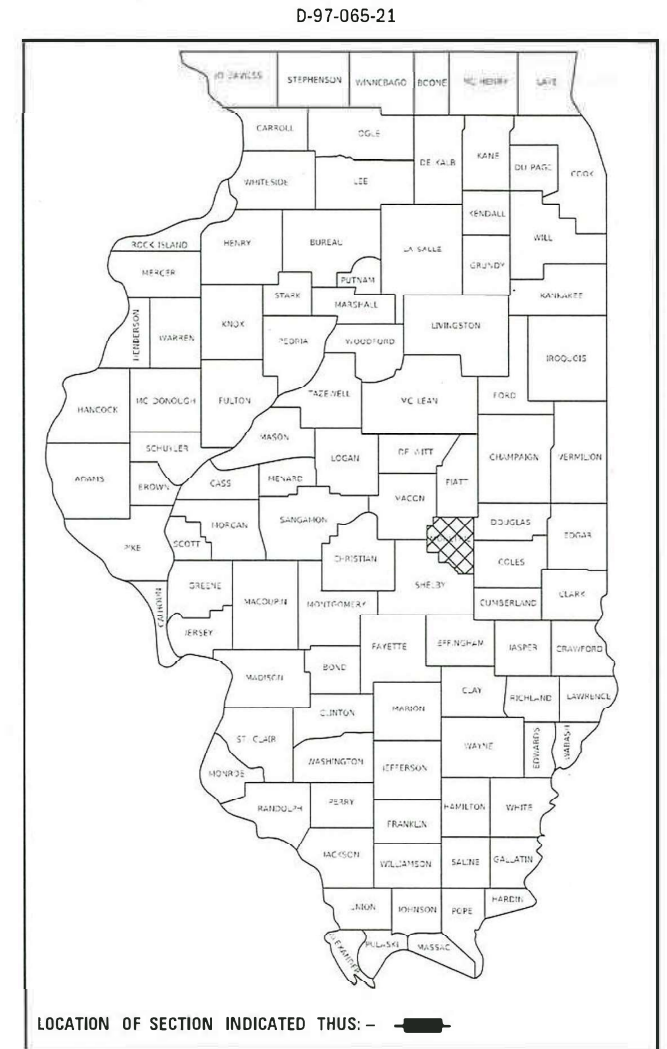
| F.A.P. RTE. | SECTION | COUNTY | TOTAL SHEETS | SHEET NO. |
|------------------------------------|--------------------|----------|--------------------|-----------|
| D7 | UNDERDRAINS 2021-1 | MOULTRIE | 6 | 1 |
| ILLINOIS | | | CONTRACT NO. 74A34 | |
| F.A.P. 320, F.A.P. 758, F.A.S. 642 | | | | |

PROPOSED HIGHWAY PLANS

FOR INDEX OF SHEETS, SEE SHEET NO. 2
 ADT = 4650 (2019) IL 121 (NORTH SECTION)
 ADT = 4800 (2019) IL 121 (SOUTH SECTION)
 ADT = 2000 (2019) IL 32
 ADT = 1400 (2020) BRUCE-FINDLAY ROAD

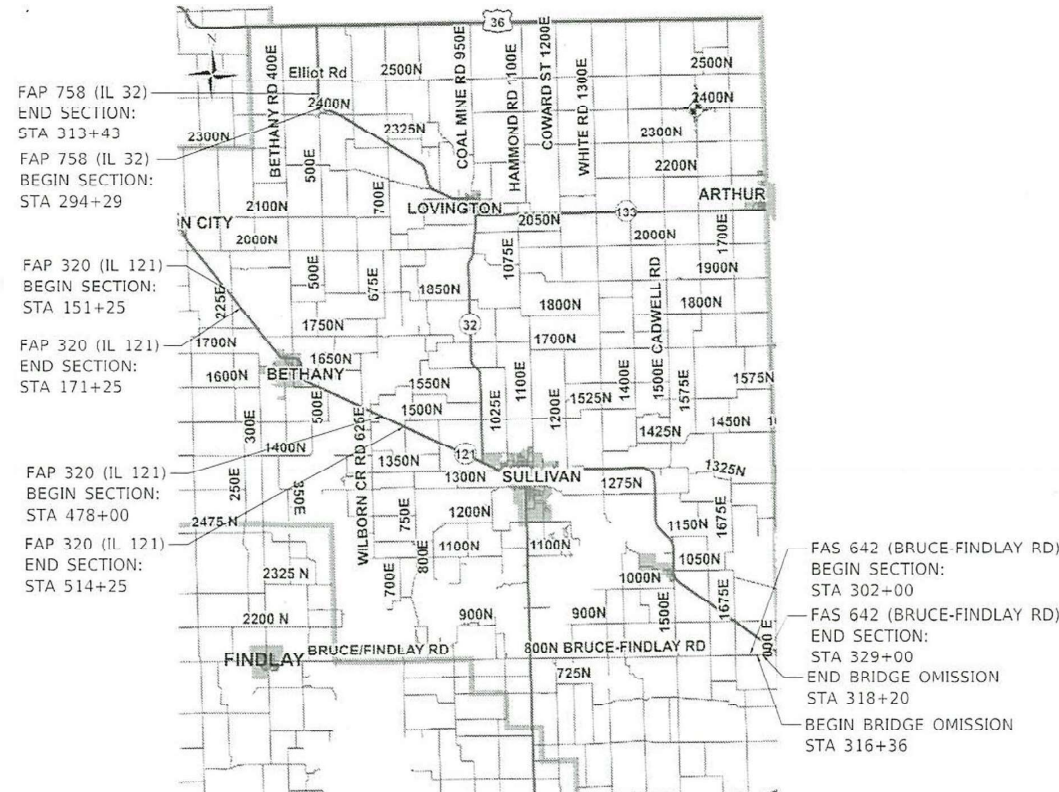
VARIOUS ROUTES
 F.A.P. ROUTE 320 (IL ROUTE 121)
 F.A.P. ROUTE 758 (IL ROUTE 32)
 F.A.S. ROUTE 642 (BRUCE-FINDLAY ROAD)
 SECTION D7 UNDERDRAINS 2021-1
 PIPE UNDERDRAINS
 MOULTRIE COUNTY

C-97-118-21



FULL SIZE PLANS HAVE BEEN PREPARED USING STANDARD ENGINEERING SCALES. REDUCED SIZED PLANS WILL NOT CONFORM TO STANDARD SCALES. IN MAKING MEASUREMENTS ON REDUCED PLANS, THE ABOVE SCALES MAY BE USED.

J.U.L.I.E.
 JOINT UTILITY LOCATION INFORMATION FOR EXCAVATORS
 1-800-892-0123
 OR 811



GROSS LENGTH = 10,239.00 FT. = 1.939 MILE
 NET LENGTH = 10,055.00 FT. = 1.904 MILE

PROJECT ENGINEER BRIAN LEWIS
 PROJECT MANAGER CHRIS WESTENDORF

CONTRACT NO. 74A34

STATE OF ILLINOIS
 DEPARTMENT OF TRANSPORTATION

SUBMITTED February 1 20 21

Jeffrey P. Mynick
 REGIONAL ENGINEER

March 19, 2021
Joe A. Elk
 ENGINEER OF DESIGN AND ENVIRONMENT

March 19, 2021
James J. Gu
 DIRECTOR OF HIGHWAYS PROJECT IMPLEMENTATION

PRINTED BY THE AUTHORITY
 OF THE STATE OF ILLINOIS

INDEX OF SHEETS

| SHEET NO. | ITEM |
|-----------|--|
| 1 | COVER SHEET |
| 2 | INDEX OF SHEETS, HIGHWAY STANDARDS AND GENERAL NOTES |
| 3 | SUMMARY OF QUANTITIES |
| 4 | SCHEDULE OF QUANTITIES |
| 5 | TYPICAL CROSS-SECTIONS |
| 6 | LOCATION MAPS |

THE FOLLOWING STANDARDS ARE A PART OF THESE PLANS AND ARE INCLUDED FOLLOWING THE LAST NUMBERED SHEET OF THE PLANS.

| STD. NO. | DESCRIPTION |
|-----------|---|
| 601001-05 | PIPE UNDERDRAINS |
| 601101-02 | CONCRETE HEADWALL FOR PIPE UNDERDRAINS |
| 701006-05 | OFF ROAD OPERATIONS, 2L, 2W, 15' TO 24" FROM PAVEMENT EDGE |
| 701011-04 | OFF ROAD MOVING OPERATIONS, 2L, 2W, DAY ONLY |
| 701201-05 | LANE CLOSURE, 2L, 2W, DAY ONLY FOR SPEEDS EQUAL TO OR GREATER THAN 45 MPH |
| 701301-04 | LANE CLOSURE, 2L, 2W, SHORT TIME OPERATIONS |
| 701901-08 | TRAFFIC CONTROL DEVICES |

GENERAL NOTES

THIS PROJECT IS LOCATED ON FAP ROUTE 320 (IL 121), FAP ROUTE 758 (IL 32), AND FAS ROUTE 642 (BRUCE-FINDLAY ROAD) IN MOULTRIE COUNTY, INCLUDED IN SECTION D7 UNDERDRAINS 2021-1 IS PIPE UNDERDRAINS AND ANY OTHER WORK NECESSARY TO COMPLETE THE SECTION.

THE FOLLOWING MIXTURE REQUIREMENTS ARE APPLICABLE FOR THIS PROJECT:

FAP 320 (IL 121), FAP 758 (IL 32) & FAS 642 (BRUCE-FINDLAY ROAD)

| | |
|----------------------|---|
| MIXTURE USE: | SHOULDER REMOVAL AND REPLACEMENT (TOP 1 1/2") |
| APPLICATION: | HMA SURFACE COURSE, IL-9.5, N70, MIX C |
| PG GRADE: | PG 64-22 |
| DESIGN AIR VOIDS: | 4.0% @ N=70 |
| MIXTURE COMPOSITION: | IL - 9.5 |
| FRICTION AGGREGATE: | MIXTURE C |

| | |
|----------------------|--|
| MIXTURE USE: | SHOULDER REMOVAL AND REPLACEMENT (BOTTOM 6 1/2") |
| APPLICATION: | HMA BINDER COURSE, IL 19.0, N70 |
| PG GRADE: | PG 64-22 |
| DESIGN AIR VOIDS: | 4.0% @ N=70 |
| MIXTURE COMPOSITION: | IL - 19.0 |
| FRICTION AGGREGATE: | N/A |

MODEL: Default
 FILE NAME: p:\pub\harronm.dwg
 ILLINOIS DOT
 PROJECT: 74A34\CADD\Drawings\DOT Office\Drawings\74A34\Drawings\74A34.dwg

| | | |
|-------------------------------|------------|-----------|
| USER NAME = steffenmk | DESIGNED - | REVISED - |
| | DRAWN - | REVISED - |
| PLOT SCALE = 100,0000 ' / in. | CHECKED - | REVISED - |
| PLOT DATE = 2/1/2021 | DATE - | REVISED - |

**STATE OF ILLINOIS
DEPARTMENT OF TRANSPORTATION**

**INDEX OF SHEETS &
GENERAL NOTES**

SCALE: SHEET OF SHEETS STA. TO STA.

| F.A.* RTE. | SECTION | COUNTY | TOTAL SHEETS | SHEET NO. |
|-------------------------------------|-----------------------|----------|--------------------|--------------|
| ~ | D7 UNDERDRAINS 2021-1 | MOULTRIE | 6 | 2 |
| *F.A.P. 320, F.A.P. 758, F.A.S. 642 | | | CONTRACT NO. 74A34 | |
| ILLINOIS FED. AID PROJECT | | | | |

Pipe Underdrains, Type 2, 6"

| IL 32 | Station | to | Station | Length (Ft) |
|---------------|---------|----|---------|-------------|
| Rt | 294+29 | | 313+43 | 1914.0 |
| Total IL 32 = | | | | 1914.0 |

| IL 121 | Station | to | Station | Length (Ft) |
|----------------|---------|----|---------|-------------|
| Rt | 478+00 | | 514+25 | 3625.0 |
| Lt | 478+00 | | 514+25 | 3625.0 |
| Rt | 151+25 | | 171+25 | 2000.0 |
| Lt | 151+25 | | 171+25 | 2000.0 |
| Total IL 121 = | | | | 11250.0 |

| Bruce-Findlay Rd | Station | to | Station | Length (Ft) |
|--------------------------|---------|----|---------|-------------|
| Rt | 302+00 | | 316+36 | 1436.0 |
| Lt | 302+00 | | 316+36 | 1436.0 |
| Rt | 318+20 | | 329+00 | 1080.0 |
| Lt | 318+20 | | 329+00 | 1080.0 |
| Total Bruce-Findlay Rd = | | | | 5032.0 |

Grand Total = 18196.0

Concrete Headwalls for Pipe Drains

| IL 32 | Station | Each |
|---------------|---------|------|
| Rt | 294+29 | 1 |
| Rt | 299+29 | 1 |
| Rt | 304+29 | 1 |
| Rt | 308+43 | 1 |
| Rt | 313+43 | 1 |
| Total IL 32 = | | 5 |

| IL 121 | Station | Each |
|----------------|---------|------|
| Rt | 479+00 | 1 |
| Lt | 479+00 | 1 |
| Rt | 484+00 | 1 |
| Lt | 484+00 | 1 |
| Rt | 489+00 | 2 |
| Lt | 489+00 | 2 |
| Rt | 494+00 | 1 |
| Lt | 494+00 | 1 |
| Rt | 503+00 | 1 |
| Lt | 503+00 | 1 |
| Rt | 508+00 | 2 |
| Lt | 508+00 | 2 |
| Rt | 513+00 | 1 |
| Lt | 513+00 | 1 |
| Rt | 151+25 | 1 |
| Lt | 151+25 | 1 |
| Rt | 156+25 | 1 |
| Lt | 156+25 | 1 |
| Rt | 164+50 | 1 |
| Lt | 164+50 | 1 |
| Rt | 169+50 | 2 |
| Lt | 169+50 | 2 |
| Total IL 121 = | | 28 |

Low Point - 2 Laterals

Low Point - 2 Laterals

Low Point - 2 Laterals

Low Point - 2 Laterals

| Bruce-Findlay Rd | Station | Each |
|--------------------------|---------|------|
| Rt | 306+36 | 1 |
| Lt | 306+36 | 1 |
| Rt | 311+36 | 1 |
| Lt | 311+36 | 1 |
| Rt | 316+36 | 1 |
| Lt | 316+36 | 1 |
| Rt | 318+20 | 1 |
| Lt | 318+20 | 1 |
| Rt | 323+20 | 1 |
| Lt | 323+20 | 1 |
| Rt | 328+20 | 1 |
| Lt | 328+20 | 1 |
| Total Bruce-Findlay Rd = | | 12 |

Grand Total = 45

Shoulder Removal and Replacement

| IL 32 | Station | to | Station | Length (Ft) |
|---------------|---------|----|---------|-------------|
| Rt | 294+29 | | 313+43 | 1914.0 |
| Rt | 294+29 | | 294+29 | 2.0 |
| Rt | 299+29 | | 299+29 | 2.0 |
| Rt | 304+29 | | 304+29 | 2.0 |
| Rt | 308+43 | | 308+43 | 2.0 |
| Rt | 313+43 | | 313+43 | 2.0 |
| Total IL 32 = | | | | 1924.0 |

| IL 121 | Station | to | Station | Length (Ft) |
|----------------|---------|----|---------|-------------|
| Rt | 478+00 | | 514+25 | 3625.0 |
| Lt | 478+00 | | 514+25 | 3625.0 |
| Rt | 479+00 | | 479+00 | 10.0 |
| Lt | 479+00 | | 479+00 | 10.0 |
| Rt | 484+00 | | 484+00 | 10.0 |
| Lt | 484+00 | | 484+00 | 10.0 |
| Rt | 489+00 | | 489+00 | 20.0 |
| Lt | 489+00 | | 489+00 | 20.0 |
| Rt | 494+00 | | 494+00 | 10.0 |
| Lt | 494+00 | | 494+00 | 10.0 |
| Rt | 503+00 | | 503+00 | 10.0 |
| Lt | 503+00 | | 503+00 | 10.0 |
| Rt | 508+00 | | 508+00 | 20.0 |
| Lt | 508+00 | | 508+00 | 20.0 |
| Rt | 513+00 | | 513+00 | 10.0 |
| Lt | 513+00 | | 513+00 | 10.0 |
| Rt | 151+25 | | 171+25 | 2000.0 |
| Lt | 151+25 | | 171+25 | 2000.0 |
| Rt | 151+25 | | 151+25 | 10.0 |
| Lt | 151+25 | | 151+25 | 10.0 |
| Rt | 156+25 | | 156+25 | 10.0 |
| Lt | 156+25 | | 156+25 | 10.0 |
| Rt | 164+50 | | 164+50 | 10.0 |
| Lt | 164+50 | | 164+50 | 10.0 |
| Rt | 169+50 | | 169+50 | 20.0 |
| Lt | 169+50 | | 169+50 | 20.0 |
| Total IL 121 = | | | | 11530.0 |

Low Point - 2 Laterals

Low Point - 2 Laterals

Low Point - 2 Laterals

Low Point - 2 Laterals

Low Point - 2 Laterals

Low Point - 2 Laterals

| Bruce-Findlay Rd | Station | to | Station | Length (Ft) |
|--------------------------|---------|----|---------|-------------|
| Rt | 302+00 | | 316+36 | 1436.0 |
| Lt | 302+00 | | 316+36 | 1436.0 |
| Rt | 318+20 | | 329+00 | 1080.0 |
| Lt | 318+20 | | 329+00 | 1080.0 |
| Total Bruce-Findlay Rd = | | | | 5032.0 |

Grand Total = 18486.0

Pipe Underdrains 6" Special

| IL 32 | Station | Length (Ft) |
|---------------|---------|-------------|
| Rt | 294+29 | 15.0 |
| Rt | 299+29 | 15.0 |
| Rt | 304+29 | 15.0 |
| Rt | 308+43 | 15.0 |
| Rt | 313+43 | 15.0 |
| Total IL 32 = | | 75.0 |

| IL 121 | Station | Length (Ft) |
|----------------|---------|-------------|
| Rt | 479+00 | 15.0 |
| Lt | 479+00 | 15.0 |
| Rt | 484+00 | 15.0 |
| Lt | 484+00 | 15.0 |
| Rt | 489+00 | 30.0 |
| Lt | 489+00 | 30.0 |
| Rt | 494+00 | 15.0 |
| Lt | 494+00 | 15.0 |
| Rt | 503+00 | 15.0 |
| Lt | 503+00 | 15.0 |
| Rt | 508+00 | 30.0 |
| Lt | 508+00 | 30.0 |
| Rt | 513+00 | 15.0 |
| Lt | 513+00 | 15.0 |
| Rt | 151+25 | 15.0 |
| Lt | 151+25 | 15.0 |
| Rt | 156+25 | 15.0 |
| Lt | 156+25 | 15.0 |
| Rt | 164+50 | 15.0 |
| Lt | 164+50 | 15.0 |
| Rt | 169+50 | 30.0 |
| Lt | 169+50 | 30.0 |
| Total IL 121 = | | 420.0 |

Low Point - 2 Laterals

Low Point - 2 Laterals

Low Point - 2 Laterals

Low Point - 2 Laterals

| Bruce-Findlay Rd | Station | Length (Ft) |
|--------------------------|---------|-------------|
| Rt | 306+36 | 10.0 |
| Lt | 306+36 | 10.0 |
| Rt | 311+36 | 10.0 |
| Lt | 311+36 | 10.0 |
| Rt | 316+36 | 10.0 |
| Lt | 316+36 | 10.0 |
| Rt | 318+20 | 10.0 |
| Lt | 318+20 | 10.0 |
| Rt | 323+20 | 10.0 |
| Lt | 323+20 | 10.0 |
| Rt | 328+20 | 10.0 |
| Lt | 328+20 | 10.0 |
| Total Bruce-Findlay Rd = | | 120.0 |

Grand Total = 615.0

MODEL: Default
 FILE NAME: p:\pub\mroom.dwg
 PROJECT: 7A331\CADD\DATA\CADD\DATA\CADD\DATA\DOT\Office\Drawings\7A331\ch-schedule.dwg

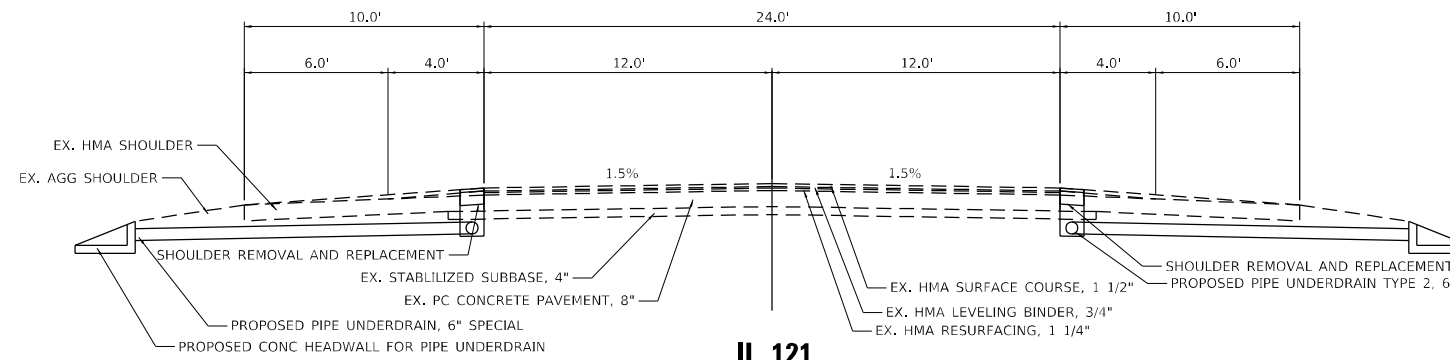
| | | |
|-----------------------------|------------|-----------|
| USER NAME = steffnmk | DESIGNED - | REVISED - |
| | DRAWN - | REVISED - |
| PLOT SCALE = 20,0000 */ in. | CHECKED - | REVISED - |
| PLOT DATE = 2/1/2021 | DATE - | REVISED - |

STATE OF ILLINOIS
DEPARTMENT OF TRANSPORTATION

SCHEDULE OF QUANTITIES

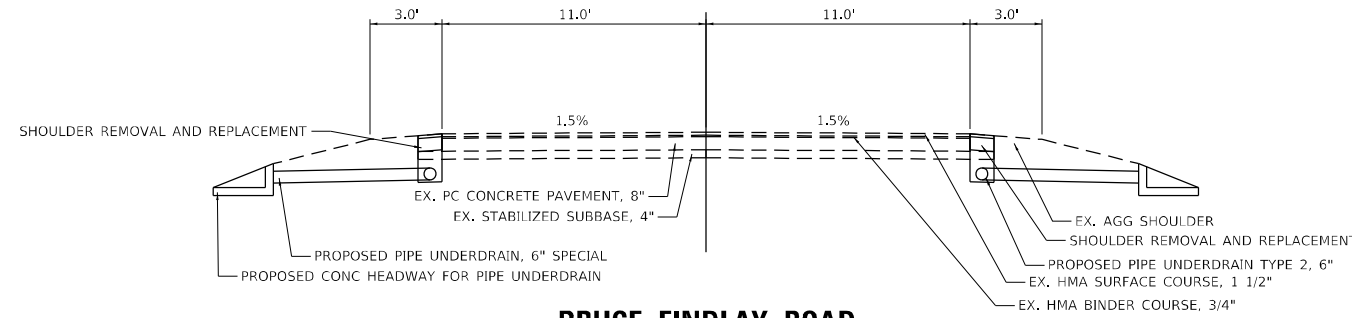
SCALE: SHEET OF SHEETS STA. TO STA.

| F.A.* RTE. | SECTION | COUNTY | TOTAL SHEETS | SHEET NO. |
|--------------------------------------|-----------------------|------------------|-----------------|--------------------|
| ~ | D7 UNDERDRAINS 2021-1 | MOULTRIE | 6 | 4 |
| * F.A.P. 320, F.A.P. 758, F.A.S. 642 | | | | CONTRACT NO. 74A34 |
| | ILLINOIS | FED. AID PROJECT | | |



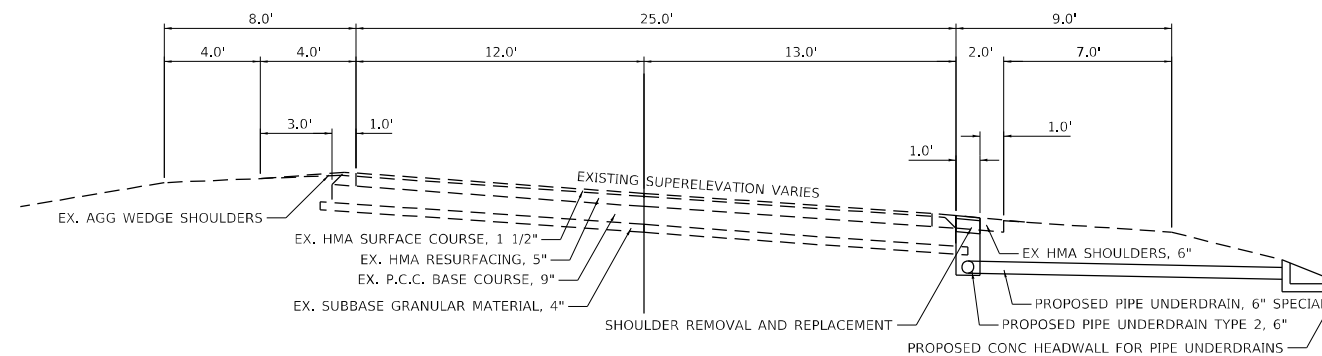
IL 121

STA 151+25 TO STA 171+25
STA 478+00 TO STA 514+25



BRUCE-FINDLAY ROAD

STA 302+00 TO STA 329+00
BRIDGE OMISSION AT STA 316+36 TO STA 318+20



IL 32

STA 294+29 TO STA 313+43

MODEL: Default
 FILE NAME: p:\pub\mroom.dwg
 PLOT DATE: 2/1/2021
 PLOT SCALE: = 40,0000 * / in.
 USER NAME: = steffenmk
 DESIGNED -
 DRAWN -
 CHECKED -
 DATE -
 REVISED -
 REVISED -
 REVISED -
 REVISED -
 STATE OF ILLINOIS
 DEPARTMENT OF TRANSPORTATION
 TYPICAL SECTIONS
 SCALE: SHEET OF SHEETS STA. TO STA.
 F.A.*
 RTE.
 SECTION
 COUNTY
 TOTAL SHEETS
 SHEET NO.
 D7 UNDERDRAINS 2021-1
 MOULTRIE
 6
 5
 * F.A.P. 320, F.A.P. 758, F.A.S. 642
 ILLINOIS FED. AID PROJECT
 CONTRACT NO. 74A34

| | | |
|------------------------------|------------|-----------|
| USER NAME = steffenmk | DESIGNED - | REVISED - |
| DRAWN - | REVISED - | |
| PLOT SCALE = 40,0000 * / in. | CHECKED - | REVISED - |
| PLOT DATE = 2/1/2021 | DATE - | REVISED - |

**STATE OF ILLINOIS
DEPARTMENT OF TRANSPORTATION**

| | |
|-------------------------|------------------------------|
| TYPICAL SECTIONS | |
| SCALE: | SHEET OF SHEETS STA. TO STA. |

| | | | | |
|--------------------------------------|---------------------------|----------|--------------------|-----------|
| F.A.* RTE. | SECTION | COUNTY | TOTAL SHEETS | SHEET NO. |
| ~ | D7 UNDERDRAINS 2021-1 | MOULTRIE | 6 | 5 |
| * F.A.P. 320, F.A.P. 758, F.A.S. 642 | ILLINOIS FED. AID PROJECT | | CONTRACT NO. 74A34 | |

