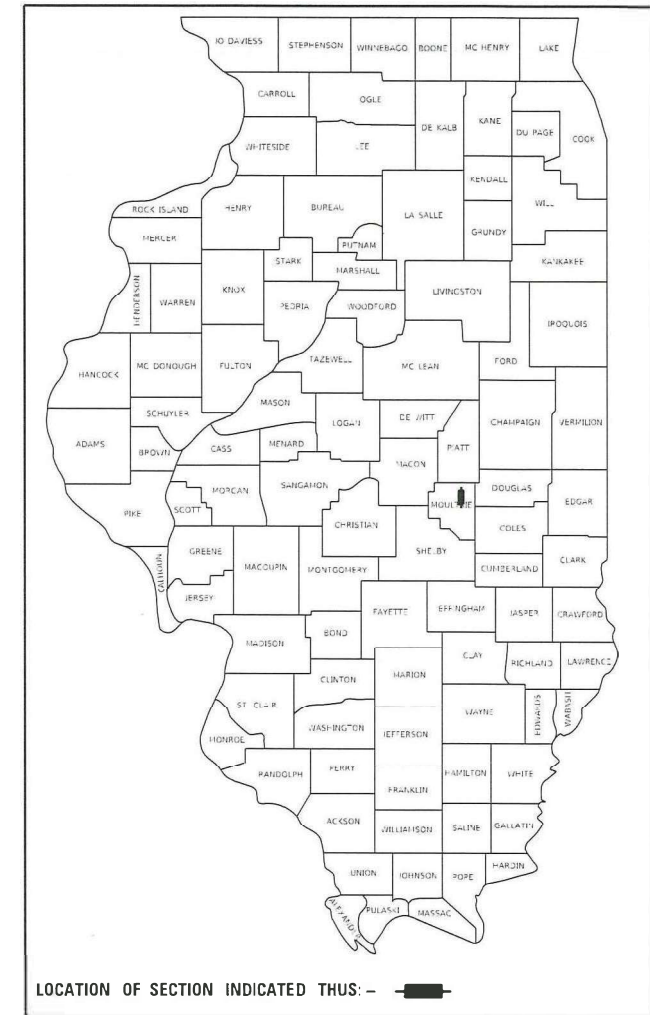


STATE OF ILLINOIS  
DEPARTMENT OF TRANSPORTATION

F.A. RTE.	SECTION	COUNTY	TOTAL SHEETS	SHEET NO.
1	D7 SHLDR REPAIRS 2021-1	MOULTRIE	5	1
		ILLINOIS	CONTRACT NO. 74A35	

F.A.P. 749  
F.A.S. 659

D-97-066-21



FOR INDEX OF SHEETS, SEE SHEET NO. 2

ADT = 3600 (FAP 749 /IL 133)  
ADT = 2100 (FAS 659 /CADWELL RD)

# PROPOSED HIGHWAY PLANS

FAP 749 /FAS 659 (IL 133 /CADWELL ROAD)  
SECTION D7 SHLDR REPAIRS 2021-1

SHOULDER REPAIR  
MOULTRIE COUNTY

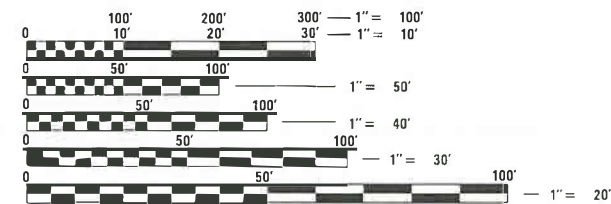
C-97-119-21

PROJECT ENDS (IL 133)  
STA. 453 + 12.00

PROJECT BEGINS (IL 133)  
STA. 295 + 94.00

PROJECT BEGINS (CADWELL RD.)  
STA. 130 + 34.00

PROJECT ENDS (CADWELL RD)  
STA. 226 + 70.00



FULL SIZE PLANS HAVE BEEN PREPARED USING STANDARD ENGINEERING SCALES. REDUCED SIZED PLANS WILL NOT CONFORM TO STANDARD SCALES. IN MAKING MEASUREMENTS ON REDUCED PLANS, THE ABOVE SCALES MAY BE USED.

J.U.L.I.E.  
JOINT UTILITY LOCATION INFORMATION FOR EXCAVATORS  
1-800-892-0123  
OR 811

PROJECT ENGINEER: DEBRA G. BARRETT  
PROJECT MANAGER: RAY REYNOLDS

CONTRACT NO. 74A35

GROSS LENGTH = 25,287.00 FT. = 4.789 MILE  
NET LENGTH = 24,383.00 FT. = 4.618 MILE

STATE OF ILLINOIS  
DEPARTMENT OF TRANSPORTATION

SUBMITTED FEBRUARY 2 2021  
Jeffrey P. Myers  
REGIONAL ENGINEER

March 19, 2021  
Scott A. Etk  
ENGINEER OF DESIGN AND ENVIRONMENT

March 19, 2021  
James J. Gu  
DIRECTOR OF HIGHWAYS PROJECT IMPLEMENTATION

PRINTED BY THE AUTHORITY  
OF THE STATE OF ILLINOIS

**GENERAL NOTES**

THE WORK INCLUDED IN THIS SECTION CONSISTS OF MILLING DAMAGED AREAS OF EXISTING HMA SHOULDERS AND REPLACING WITH HMA AND ALL OTHER WORK NECESSARY TO COMPLETE THIS SECTION.

THE INTENT OF THIS PROJECT IS TO REMOVE AND REPLACE THE DAMAGED AREAS OF THE EXISTING SHOULDERS. WHILE THE WIDTH OF THIS REPAIR WORK WILL REMAIN CONSTANT, THE LOCATION WITHIN THE SHOULDER MAY BE ADJUSTED TO FIT FIELD CONDITIONS, AT THE DIRECTION OF THE ENGINEER.

OMIT HMA SHOULDER REPAIR ON ALL PCC SIDEROADS AND ENTRANCES.  
OMIT HMA SHOULDER REPAIR ON HMA SIDEROADS AND ENTRANCES AT THE DIRECTION OF THE ENGINEER.

THE FOLLOWING MIXTURE REQUIREMENTS ARE APPLICABLE TO THIS PROJECT:

APPLICATION	AC/PG	DESIGN AIR VOIDS	MIXTURE COMPOSITION	FRICTION AGGREGATE	QUALITY MANAGEMENT
HMA SHOULDERS, SPECIAL, CRUSHED GRAVEL (TWO - 2" LIFTS)	SBS PG 70-22	4.0% @ N=90	IL - 9.5	MIXTURE D	QC/QA

**INDEX OF SHEETS**

SHEET NO.	ITEM
1	COVER SHEET
2	INDEX OF SHEETS, HIGHWAY STANDARDS & GENERAL NOTES
3	SUMMARY OF QUANTITIES
4	TYPICAL CROSS SECTIONS
5	SCHEDULES OF QUANTITIES

THE FOLLOWING STANDARDS ARE A PART OF THESE PLANS AND ARE INCLUDED FOLLOWING THE LAST NUMBERED SHEET OF THE PLANS.

STD. NO.	DESCRIPTION
000001-08	STANDARD SYMBOLS, ABBREVIATIONS, AND PATTERNS
001006	DECIMAL OF AN INCH AND OF A FOOT
701001-02	OFF-ROAD OPERATIONS, 2L, 2W, MORE THAN 15' AWAY
701006-05	OFF-ROAD OPERATIONS, 2L, 2W, 15' TO 24" FROM PAVEMENT EDGE
701011-04	OFF-ROAD MOVING OPERATIONS, 2L, 2W, DAY ONLY
701311-03	LANE CLOSURE 2L, 2W MOVING OPERATIONS - DAY ONLY
701326-04	LANE CLOSURE, 2L, 2W, PAVEMENT WIDENING, FOR SPEEDS >= 45 MPH
701901-08	TRAFFIC CONTROL DEVICES

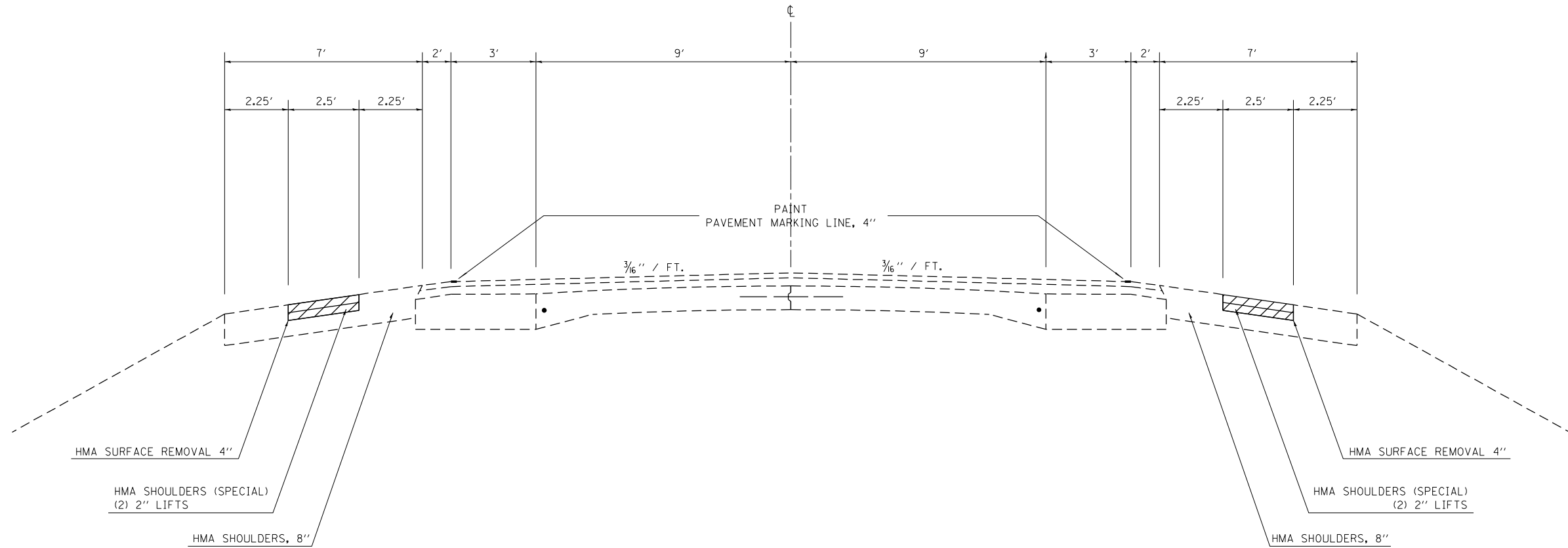
MODEL: Default  
 FILE NAME: p:\pub\harronm.dwt\illinois.gov\PIWDOT\Documents\IDOT\_Offices\District\_7\Projects\74A35\CADD\Drawings\74A35-SH-CON-06.dgn

\* F.A.P. 749  
F.A.S. 659

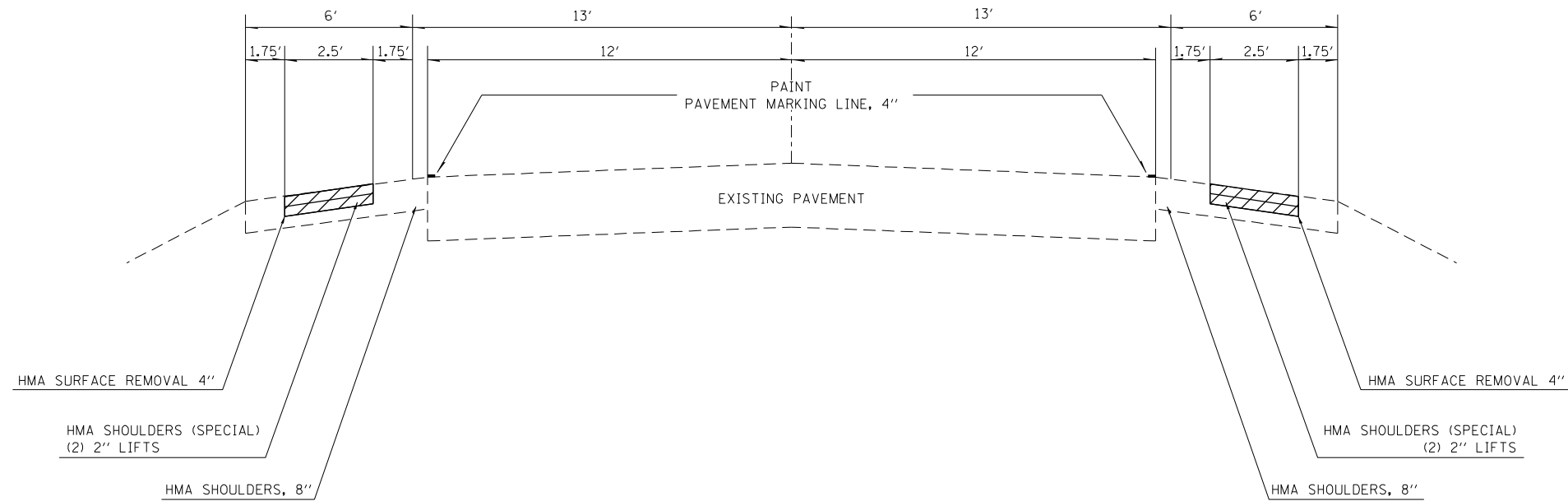
USER NAME = steffenmk	DESIGNED -	REVISED -	<b>STATE OF ILLINOIS DEPARTMENT OF TRANSPORTATION</b>	<b>INDEX OF SHEETS, HIGHWAY STANDARDS, LOCATIONS, AND GENERAL NOTES</b>	F.A. RTE.	SECTION	COUNTY	TOTAL SHEETS	SHEET NO.	
	DRAWN -	REVISED -			~	D7 SHLDR REPAIRS 2021-1	MOULTRIE	5	2	
PLOT SCALE = 100,0000 ' / in.	CHECKED -	REVISED -			CONTRACT NO. 74A35					
PLOT DATE = 2/2/2021	DATE -	REVISED -			SCALE:	SHEET	OF	SHEETS	STA.	TO
					ILLINOIS FED. AID PROJECT					



**TYPICAL SECTION – IL 133**



**TYPICAL SECTION – CADWELL ROAD**



\* F.A.P. 749  
F.A.S. 659

MODEL: Default  
 FILE NAME: p:\pub\harronm.dwg  
 PROJECT: 74A35-CADWELL ROAD  
 OFFICE: DISTRICT 7  
 CONTRACT: 74A35-SH-1-TYPICAL.DWG

USER NAME = steffenmk	DESIGNED -	REVISED -
	DRAWN -	REVISED -
PLOT SCALE = 100,0000' / in.	CHECKED -	REVISED -
PLOT DATE = 2/2/2021	DATE -	REVISED -

**STATE OF ILLINOIS  
DEPARTMENT OF TRANSPORTATION**

<b>TYPICAL SECTIONS</b>				
SCALE:	SHEET	OF	SHEETS	STA. TO STA.

F.A. RTE.	SECTION	COUNTY	TOTAL SHEETS	SHEET NO.
-	D7 SHLDR REPAIRS 2021-1	MOULTRIE	5	4
CONTRACT NO. 74A35				
ILLINOIS FED. AID PROJECT				

MODEL: Default  
 FILE NAME: p:\pub\harronm.dwt\illinois.gov\PWIDOT\Documents\IBOT\_Office\Distric\_7\Project\74A35\CADD\DATA\CAD\Sheet\0774A35-SHC-Schedule.dgn

L/R	STATION		LENGTH (FT)	WIDTH (FT)	OMISSION DESCR.	BITUMINOUS MATERIALS (TACK COAT) (POUND)	HMA SURFACE REMOVAL, 4" (SQ YD)	HMA SHOULDERS, SPECIAL (TON)	PAINT PAVEMENT MARKING - LINE 4" (FOOT)
	FROM	TO							
IL 133									
L	295+94.00	348+58.00	5264.00	2.5		987	1462	328	5264
L	348+58.00	348+90.00	32.00	0.0	INT 1600E	0	0	0	0
L	348+90.00	420+93.00	7203.00	2.5		1351	2001	448	7203
L	420+93.00	423+11.00	218.00	0.0	INT GLASGOW ST	0	0	0	0
L	423+11.00	423+79.00	68.00	2.5		13	19	4	68
L	423+79.00	425+03.00	124.00	0.0	RAILROAD	0	0	0	124
L	425+03.00	434+53.00	950.00	2.5		178	264	59	950
L	434+53.00	435+06.00	53.00	0.0	INT PALMER ST	0	0	0	0
L	435+06.00	452+06.00	1700.00	2.5		319	472	106	1700
R	296+61.00	327+06.00	3045.00	2.5		571	846	189	3045
R	327+06.00	327+76.00	70.00	0.0	CE	0	0	0	70
R	327+76.00	348+58.00	2082.00	2.5		390	578	130	2082
R	348+58.00	348+90.00	32.00	0.0	INT 1600E	0	0	0	0
R	348+90.00	362+25.00	1335.00	2.5		250	371	83	1335
R	362+25.00	363+41.00	116.00	0.0	CE	0	0	0	116
R	363+41.00	368+72.00	531.00	2.5		100	148	33	531
R	368+72.00	369+50.00	78.00	0.0	CE	0	0	0	78
R	369+50.00	423+79.00	5429.00	2.5		1018	1508	338	5429
R	423+79.00	425+03.00	124.00	0.0	RAILROAD	0	0	0	124
R	425+03.00	450+51.00	2548.00	2.5		478	708	159	2548
R	450+51.00	451+10.00	59.00	2.5	CE (INCLUDE)	11	16	4	59
R	451+10.00	453+12.00	202.00	2.5		38	56	13	202
LOCATION TOTALS =						5703	8449	1893	30928
CADWELL RD									
R	130+34.00	143+12.00	1278.0	2.5		240	355	80	1278
R	143+12.00	143+67.00	55.0	0.0	CE	0	0	0	55
R	143+67.00	152+50.00	883.0	2.5		166	245	55	883
R	152+50.00	153+14.00	64.0	0.0	RAILROAD	0	0	0	64
R	153+14.00	154+76.00	162.0	2.5		30	45	10	162
R	154+76.00	155+66.00	90.0	0.0	CE	0	0	0	90
R	155+66.00	183+09.00	2743.0	2.5		514	762	171	2743
R	183+09.00	183+66.00	57.0	0.0	INT 1800N	0	0	0	0
R	183+66.00	187+21.00	355.0	2.5		67	99	22	355
R	187+21.00	189+21.00	200.0	0.0	CE	0	0	0	200
R	189+21.00	225+40.00	3619.0	2.5		679	1005	225	3619
L	130+34.00	143+12.00	1278.0	2.5		240	355	80	1278
L	143+12.00	144+78.00	166.0	0.0	CE	0	0	0	166
L	144+78.00	152+40.00	762.0	2.5		143	212	47	762
L	152+40.00	152+93.00	53.0	0.0	RAILROAD	0	0	0	53
L	152+93.00	183+09.00	3016.0	2.5		566	838	188	3016
L	183+09.00	183+66.00	57.0	0.0	INT 1800N	0	0	0	0
L	183+66.00	196+27.00	1261.0	2.5		236	350	78	1261
L	196+27.00	196+81.00	54.0	0.0	PE	0	0	0	54
L	196+81.00	210+65.00	1384.0	2.5		260	384	86	1384
L	210+65.00	211+21.00	56.0	0.0	PE	0	0	0	56
L	211+21.00	214+52.00	331.0	2.5		62	92	21	331
L	214+52.00	215+50.00	98.0	0.0	CE	0	0	0	98
L	215+50.00	226+70.00	1120.0	2.5		210	311	70	1120
LOCATION TOTALS =						3411	5053	1132	19028
<b>PROJECT TOTALS =</b>						<b>9114</b>	<b>13502</b>	<b>3024</b>	<b>49956</b>

CHANGEABLE MESSAGE SIGN				
# OF SIGNS	# OF DAYS	DAYS	LOCATION	DESCRIPTION
4	14	56	BOTH ROUTES	PRIOR TO CONSTRUCTION
2	28	56	CURRENT ROUTE	DURING CONSTRUCTION
<b>TOTAL =</b>		<b>112</b>		

\* F.A.P. 749  
 F.A.S. 659

USER NAME = stefenmk	DESIGNED -	REVISED -
	DRAWN -	REVISED -
PLOT SCALE = 100,0000' / in.	CHECKED -	REVISED -
PLOT DATE = 2/2/2021	DATE -	REVISED -

**STATE OF ILLINOIS  
 DEPARTMENT OF TRANSPORTATION**

**SCHEDULE OF QUANTITIES**

SCALE: SHEET OF SHEETS STA. TO STA.

F.A. RTE.	SECTION	COUNTY	TOTAL SHEETS	SHEET NO.
-	D7 SHLDR REPAIRS 2021-1	MOULTRIE	5	5
			CONTRACT NO. 74A35	
		ILLINOIS	FED. AID PROJECT	