

INDEX OF SHEETS

SHEET NO. 1	COVER SHEET
SHEET NO. 2	PLAN AND PROFILE
SHEETS 3 & 4	CROSS SECTIONS
SHEET NO 5	GENERAL PLAN AND ELEVATION
SHEET NO 6	SUPERSTRUCTURE
SHEET NO 7	ABUTMENTS
SHEET NO 8	PIERS
SHEET NO 9	STANDARD DETAILS 207ORB, 2113

STATE OF ILLINOIS
DEPARTMENT OF PUBLIC WORKS AND BUILDINGS
DIVISION OF HIGHWAYS
**PLANS FOR PROPOSED
FEDERAL-AID SECONDARY PROJECT**

F.A.S. ROUTE NO.	SEC.	COUNTY	TOTAL SHEETS	SHEET NO.
172	43B	DE KALB	9	1.
FED. ROAD DIST. NO. 7 ILLINOIS PROJECT S-756(2)				

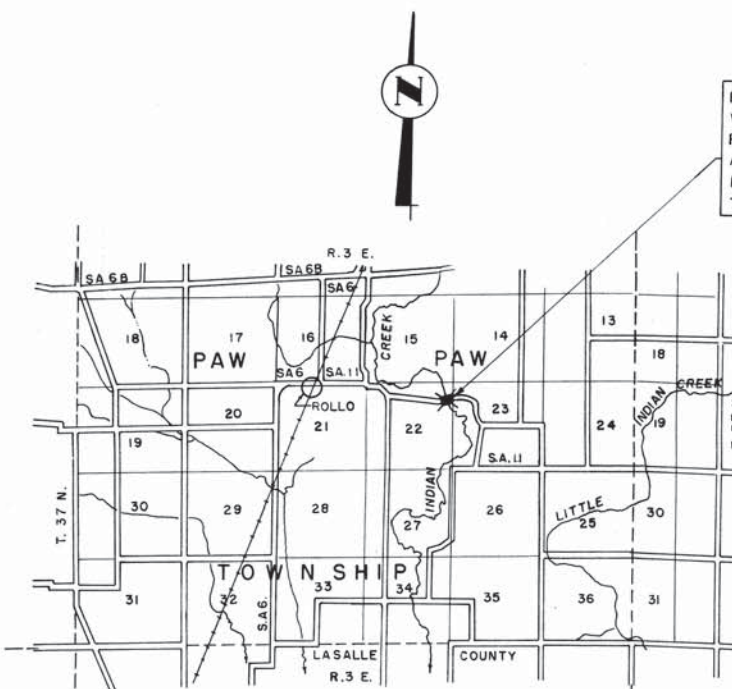
PLAN 1 INCH = 50 FEET
PROFILE HOR. 1 INCH = 50 FEET
PROFILE VERT. 1 INCH = 5 FEET
CROSS SECTIONS 1 INCH = 5 FEET

F.A.S. ROUTE 172 SECTION 43 B DE KALB COUNTY
PROJECT S-756(2)

*Approved Office before
after*

SUMMARY OF QUANTITIES

1100	CU. YDS.	CHANNEL EXCAVATION
570	CU. YDS.	CLASS A EXCAVATION FOR STRUCTURES
400	CU. YDS.	CLASS B EXCAVATION FOR STRUCTURES
311.4	CU. YDS.	CLASS X CONCRETE
5.0	CU. YDS.	HANDRAIL CONCRETE
38110	LBS.	REINFORCEMENT BARS
2400	LBS.	FURNISHING & ERECTING STRUCTURAL STEEL
2180	LIN. FT.	FURNISHING UNTREATED PILES, UP TO 30'
2180	LIN. FT.	DRIVING TIMBER PILES
1	EACH	TEST PILES (TIMBER)
109	EACH	METAL SHOES
1	EACH	NAME PLATES



PROPOSED CONTINUOUS R.C. FLAT SLAB BRIDGE; 3 SPANS @ 24'-8" WITH R.C. CLOSED ABUTMENTS & SOLID PIERS ON WOOD PILING. 24'-4 1/2" ROADWAY AT RIGHT ANGLES. C. BRIDGE AT STA. 75+50 WHICH IS LOCATED APPROX. 600' WEST & 1100' SOUTH OF THE N.E. CORNER OF SECTION 22, T. 37N., R. 3E., OF THE 3rd P.M.

LOCATION MAP
Scale: 1 inch = 1 mile

NET LENGTH = 76.42' = .014 MILES

STATE OF ILLINOIS
DEPARTMENT OF PUBLIC WORKS AND BUILDINGS
DIVISION OF HIGHWAYS

SUBMITTED *March 7 1956*

PASSED *2-28-1956* DISTRICT ENGINEER

APPROVED *R.R. Bartolomeo* ENGINEER OF LOCAL ROADS AND STREETS

APPROVED *3-28-1956* CHIEF HIGHWAY ENGINEER

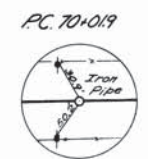
APPROVED *3-28-1956* DIRECTOR

ROADWAY PLANS PREPARED BY FRED O. LARSON
CO. SUPT. OF HIGHWAYS

55

F.S. ROUTE NO.	SEC.	COUNTY	TOTAL SHEETS	SHEET NO.
172	43B	DE KALB	9	2.
FED. ROAD DIST 7		ILLINOIS PROJECT 5-756 (2)		

B.M. #1
Sp. N. in North Side of P.P.
28' RH of Sta. 69+60
Elev. 100.00 (Assumed)

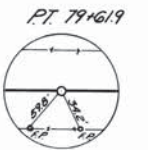


B.M. #2
Sp. N. in East Root of Triple Oak
110' RH Sta. 75+08
Elev. 85.45 (Assumed)



Note: Approx. 1100 Cu Yds Channel Excavation, denoted by crosshatched area, to be part of bridge contract. Excavated material shall be used to fill existing channel, denoted by shaded area, to the lines and grades shown on the plans and cross sections or as designated by the Engineer.

FUTURE CHANNEL RELOCATION TO BE PART OF ROAD SECTION



Drainage ditch on present R.O.W to be relocated by County Forces. Permanent relocation will be part of Road Section.

Existing Bridge 10' x 10' Steel Truss with Limestone Abuts. to remain in place during construction of proposed bridge

Proposed R.C. 3 Span Flat Slab Bridge
R.C. Closed Abutments
& Solid Piers on Wood Piling
STATION 75+50

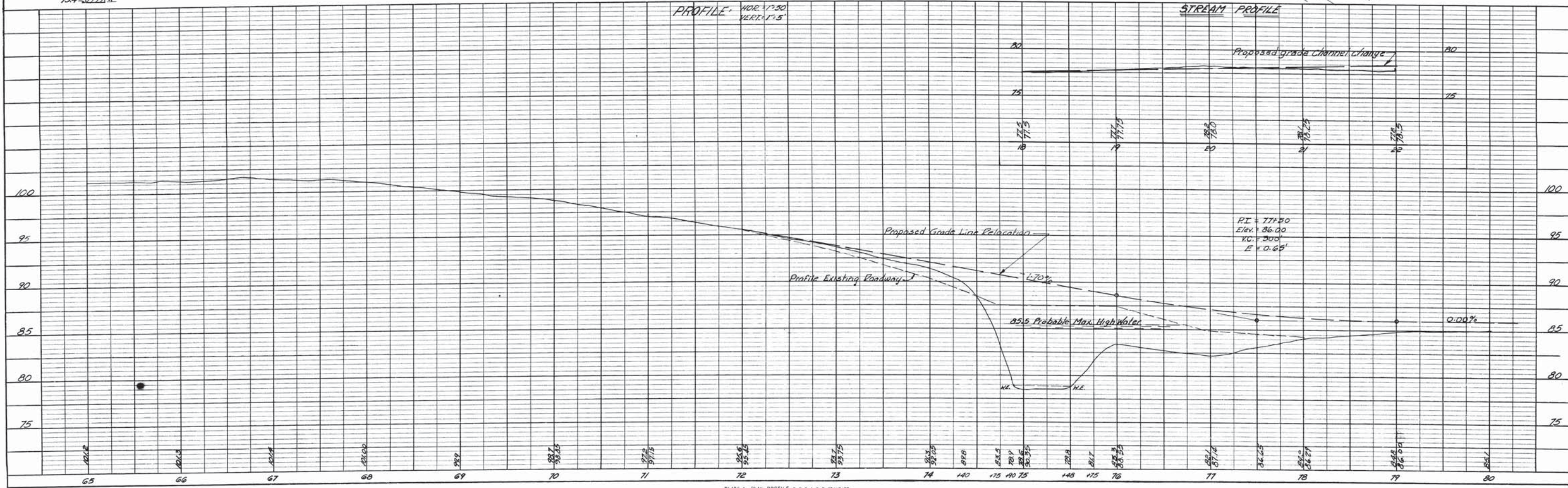
CURVE DATA
P.I. Sta. 74+92.3
I. 28° 48'
D. 3° 00'
T. 490.4
E. 61.97
L. 960.0
R. 1910.0
S = 0.025'/ft.

Superelevation attained Sta. 69+45 to Sta. 70+55 and Sta. 79+06.9 to Sta. 80+16.9

PLAN = 1" = 50'

PLAN	SURVEYED	DATE
	BY	
	DATE	
	NO.	
	NO.	
	NO.	

PROFILE	SURVEYED	DATE
	BY	
	DATE	
	NO.	
	NO.	
	NO.	

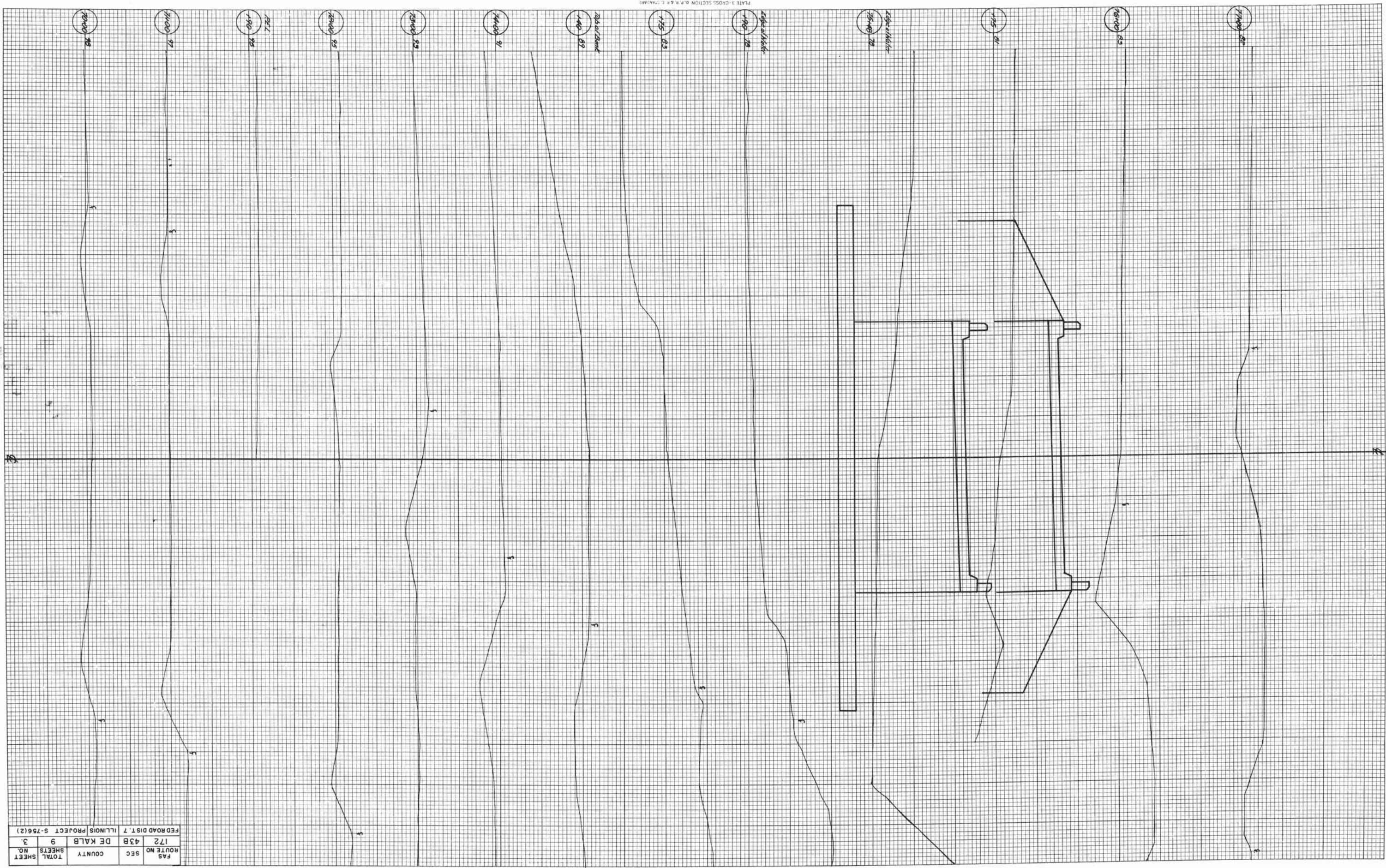


ORIGINAL SURVEY SUBMITTED
 NOTE BOOK PLOTTED
 AREA CHECKED

FINAL SURVEY SUBMITTED
 NOTE BOOK PLOTTED
 AREA CHECKED

DATE

DATE

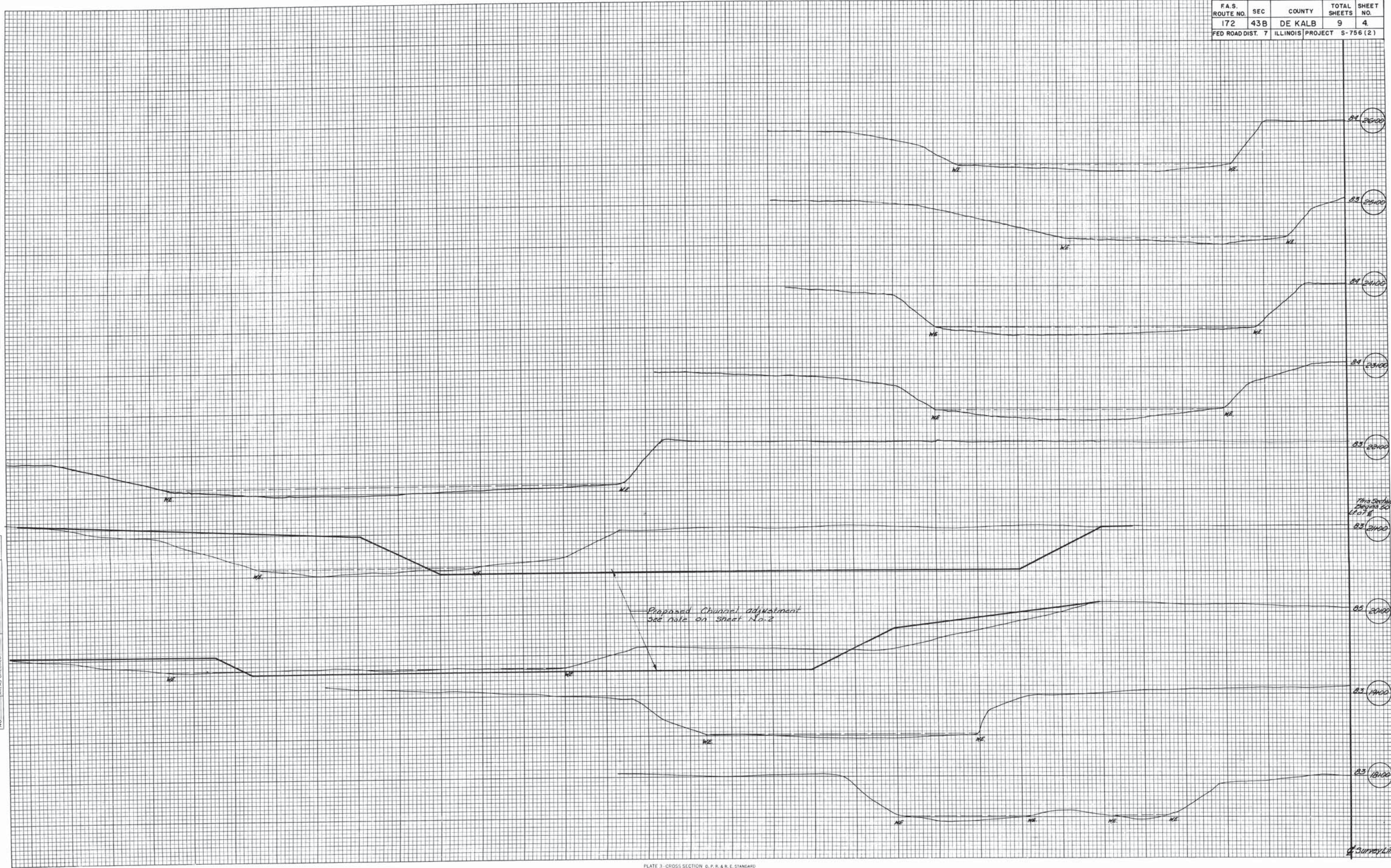


FAS NO.	172	FED. ROAD DIST. 7	ILLINOIS PROJECT S-756(2)
ROUTE NO.	43B	DE KALB	
COUNTY	9	TOTAL SHEETS	3
SHEET NO.			

F.A.S. ROUTE NO.	SEC	COUNTY	TOTAL SHEETS	SHEET NO.
172	43B	DE KALB	9	4
FED ROAD DIST. 7		ILLINOIS PROJECT	S-756 (2)	

FINAL SURVEY SURVEYED BY DATE
NOTE BOOK NO. SURVEY PLOTTED TEMPLATE AREAS CHECKED

ORIGINAL SURVEY SURVEYED BY DATE
NOTE BOOK NO. SURVEY PLOTTED TEMPLATE AREAS CHECKED



SurveyLine

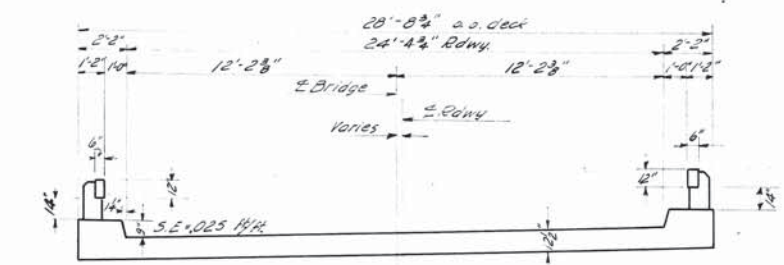
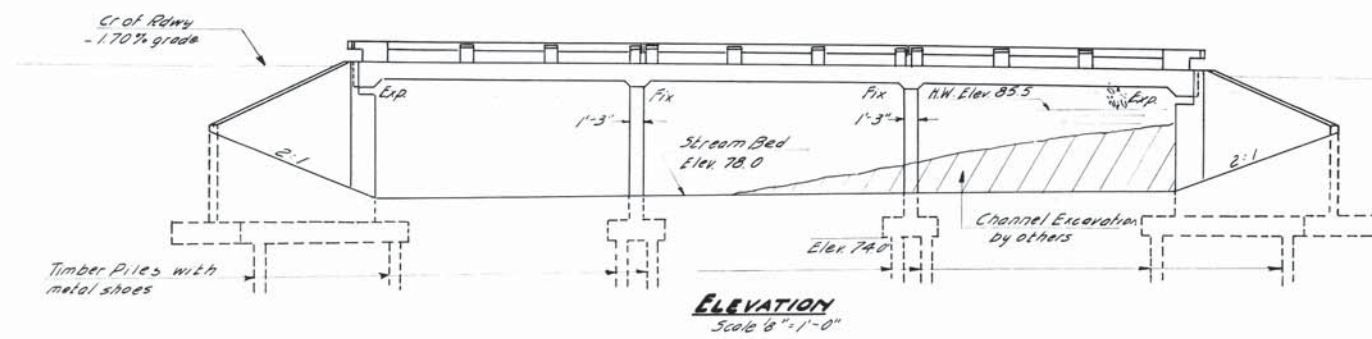
B.M. Spike and washer in E. roof of triple Oak
110' Rt of Sta. 75+08 - Elev 85.45
Existing Structure: Pratt truss, 1 span @ 55' clear with a 14' Rdwy.
on stone masonry sub-structure to be re-
moved by others.

STATE OF ILLINOIS
DEPARTMENT OF PUBLIC WORKS & BUILDINGS
DIVISION OF HIGHWAYS

ROUTE NO.	SECTION	COUNTY	TOTAL SHEETS	SHEET NO.
F.A.S. 172	43 B	DE KALB	9	5

ILLINOIS FED. AID PROJECT: S-756 (2)

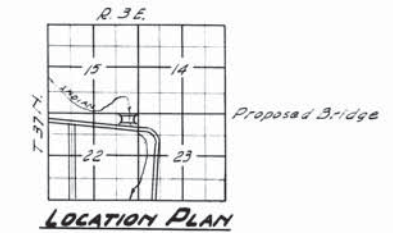
SHEET NO. / 4 SHEETS



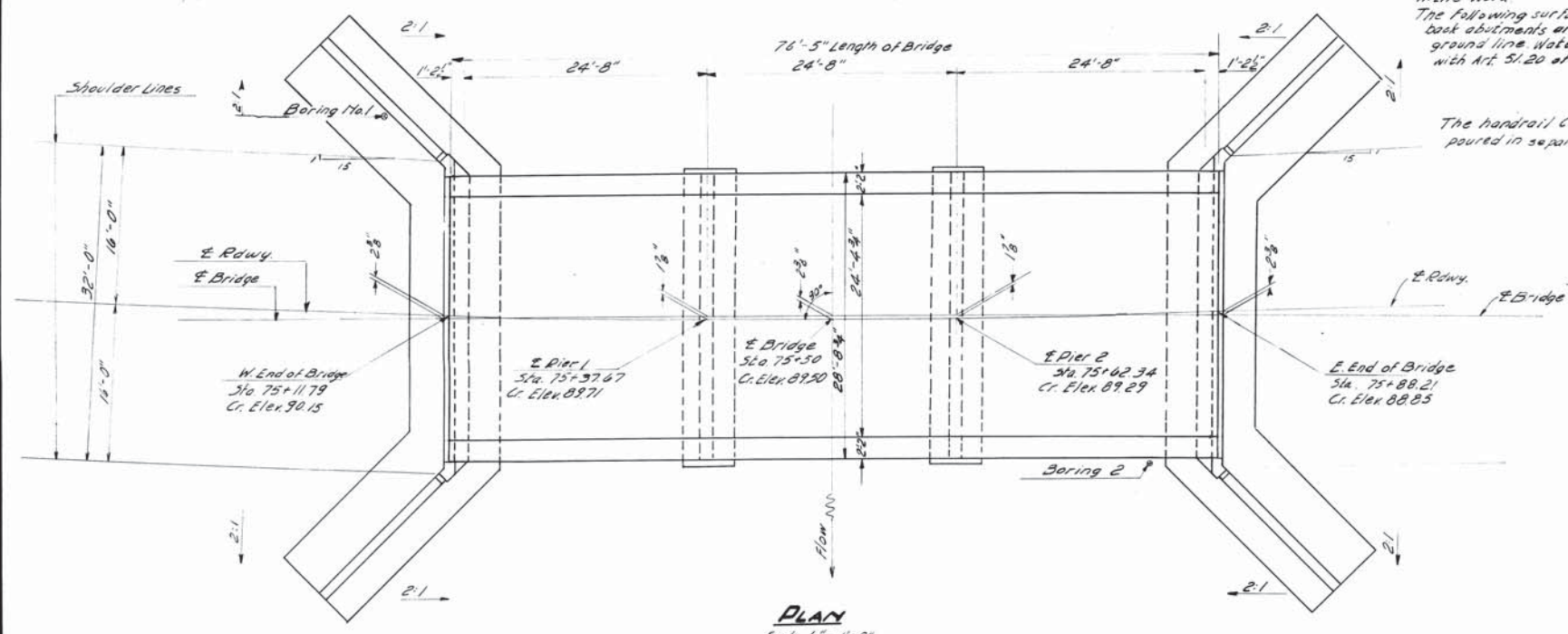
GENERAL NOTES

Class X Concrete shall be used throughout except in handrails. Handrail Concrete shall be used in handrails. The concrete floor slab shall be finished in accordance with article 51.18(a) of the Standard Specifications. All rollers, bearing plates, load plates and anchor bolts shall be fabricated and set with accordance with article 51.14 of the Standard Specifications and are included for payment as structural steel. Estimated weight 2400 lbs. Except otherwise provided, all structural steel shall receive one shop coat of red lead paint and two field coats of aluminum paint. See Arts. 571 to 575 inclusive of the Standard Specifications. All paint shall be furnished and applied by the contractor. The contractor shall drive one test pile in permanent location, as directed by the Engineer before ordering remainder of piles. Boring data are shown on the drawings only as a guide to bidders in estimating soil conditions which may be encountered in the work. The following surface of the bridge shall be waterproofed: deck abutments and back wingwalls from top of footing to ground line. Waterproofing shall be done in accordance with Art. 51.20 of the Standard Specifications.

DECK CROSS SECTION
Scale 4" = 1'-0"



The handrail concrete in rail posts and railing shall be poured in separate operations.



WATERWAY INFORMATION

Drainage Area	24,000 acres
Character	level rolling, cultivated
Required Opening (15 year Flood)	525 sq
Present Opening	400 sq
Proposed Opening	525 sq

TOTAL BILL OF MATERIAL

ITEM	UNIT	SUPER	SUB	TOTAL
Class X Concrete	(Cu. Yds)	96.5	214.9	311.4
Handrail Rail Concrete	(Cu. Yds)	5.0		5.0
Reinforcement Bars	Lbs.	22,200	15,910	38,110
Structural Steel	Lbs.	2,400		2,400
Untreated Timber Piles	Lin Ft.		2,180	2,180
Metal Pile Shoes	(Each)		109	109
Test Piles (Timber)	(Each)		1	1
Class A Excavation for Structures	(Cu. Yds)		570	570
Class B Excavation for Structures	(Cu. Yds)		400	400
Name Plate	(Each)	1		1

STATION 75+50
BUILT 19 BY
STATE OF ILLINOIS
F.A.S. RT. 172 SEC. 43 B
LOADING H15-512

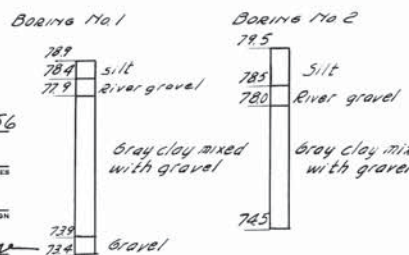
NAME PLATE
See Standard 213

HORIZ. CURVE DATA

RI = Sta. 74+92.3 E = 61.97'
L = 28'-48" L = 960.0'
D = 3'-00" R = 1910.0'
T = 430.4 S.E. 0.25%

STRESSES

f_c = 1400 psi - Superstructure
f_c = 800 psi - Substructure
f_s = 20000 psi - Reinforcement Bars
n = 10
Piles Max Capacity 20 Ton

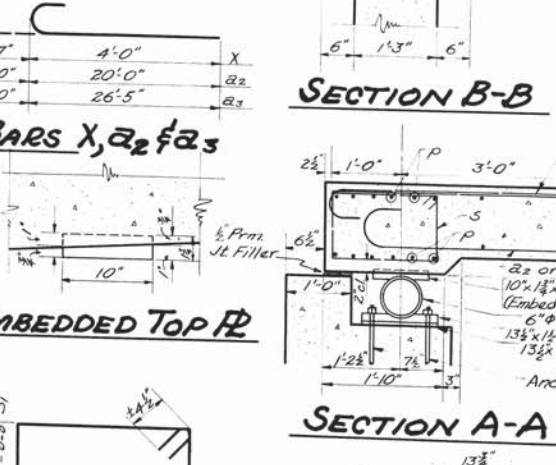
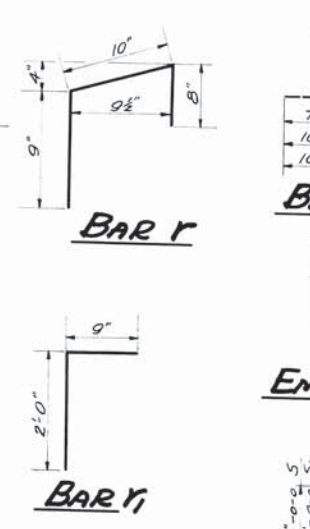
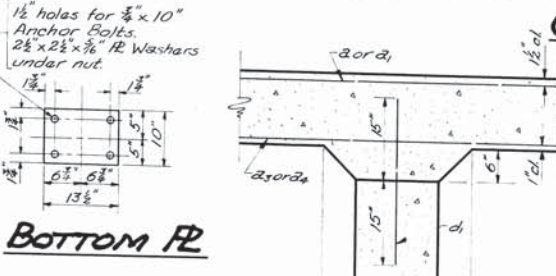
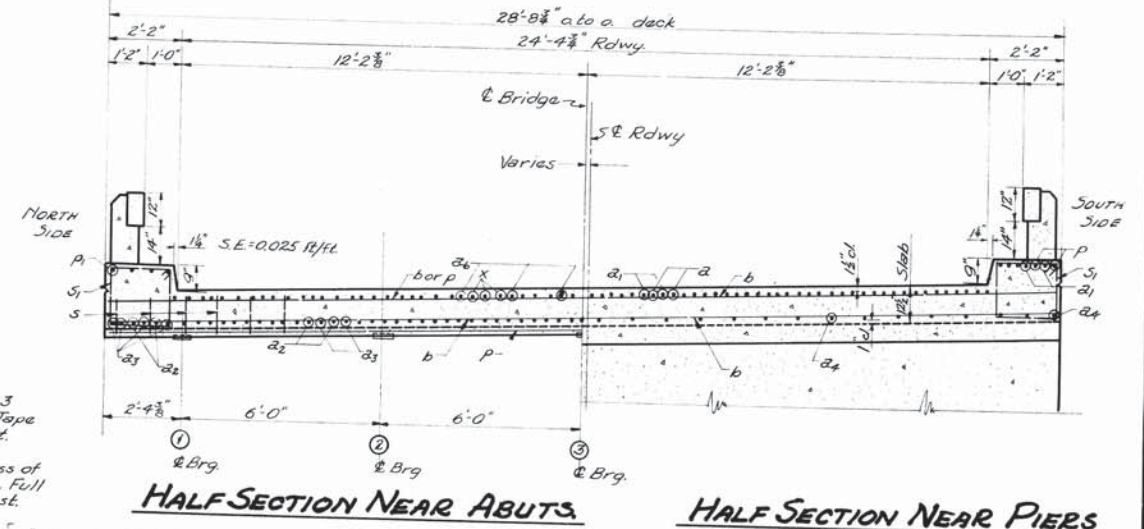
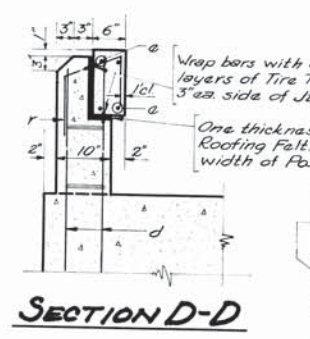
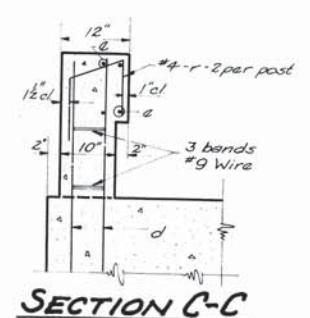
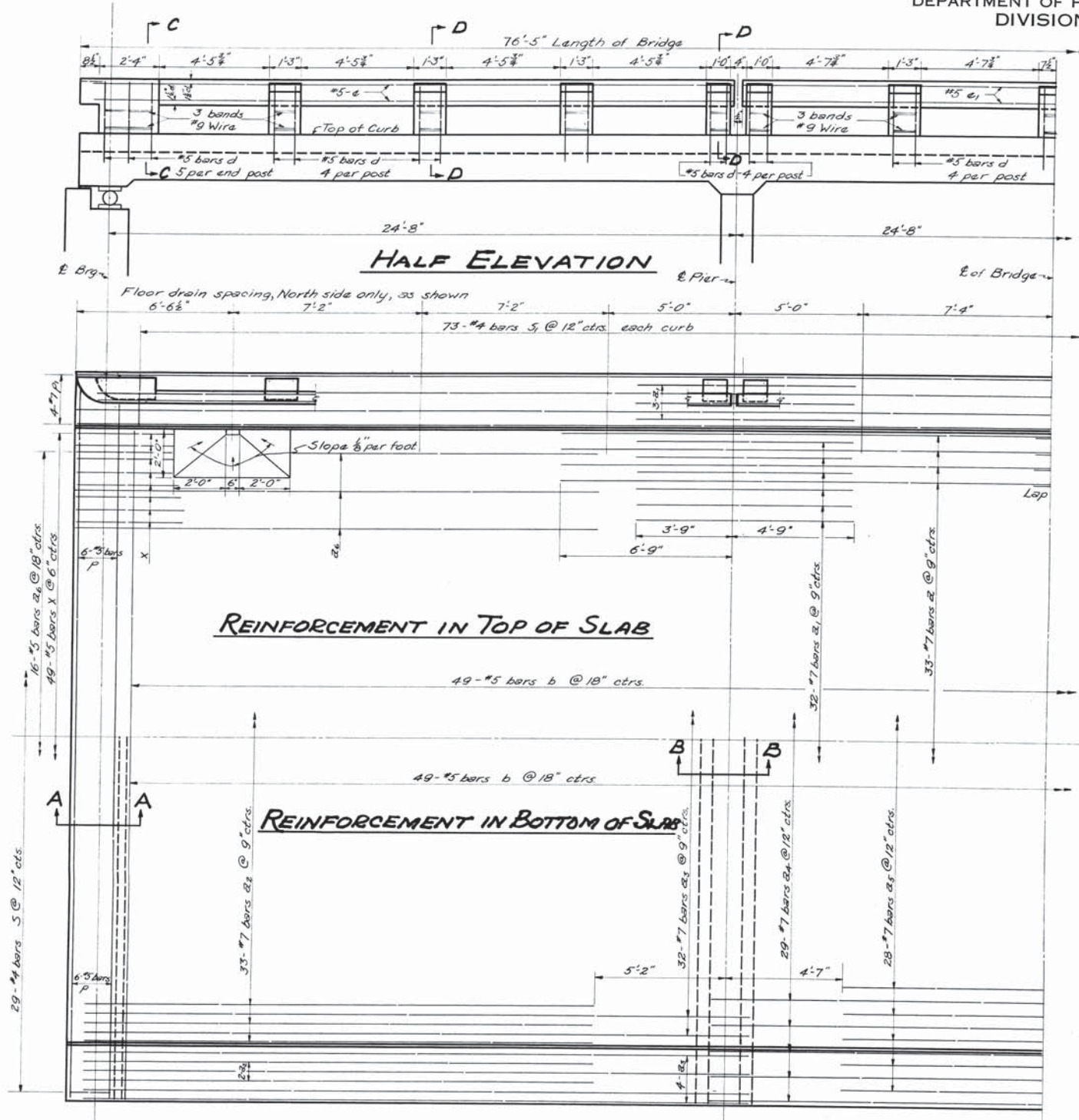


DESIGNED	Bygones
CHECKED	Bygones
DRAWN	B.S.L. Ma. F. Mercado
CHECKED	G.R.

EXAMINED	FEB. 24 1956
PASSED	
APPROVED	R.L. Batelemeyer

LOADING H15 512-44

**INDIAN CREEK
GENERAL PLAN
F.A.S. RT. 172-SEC. 43 B
DEKALB COUNTY
STA. 75+50**



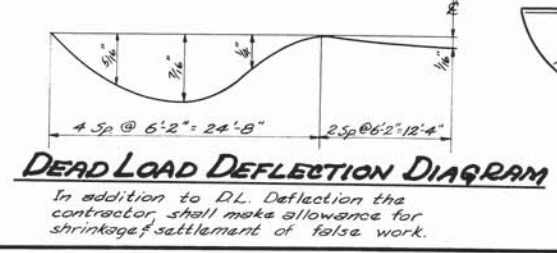
BILL OF MATERIAL (SUPER.)

BAR	NO.	SIZE	LENGTH	SHAPE
a	66	#7	20'-3"	
a ₁	76	#7	8'-6"	
a ₂	74	#7	20'-10"	C
a ₃	80	#7	27'-3"	C
a ₄	29	#7	26'-0"	
a ₅	28	#7	15'-6"	
a ₆	32	#5	20'-3"	
b	98	#5	28'-6"	
d	124	#5	3'-0"	
a ₁	8	#5	24'-5"	
r	64	#4	2'-3"	
s	58	#4	5'-9"	
s ₁	146	#4	7'-5"	
x	98	#5	4'-7"	
p	48	#5	14'-10"	
p ₁	24	#7	25'-6"	
e	16	#5	25'-0"	

Class X Concrete	Cu Yds.	96.5
Handrail Concrete	Cu Yds.	5.0
Reinforcement Bars	Lbs.	22,200
Structural Steel	Lbs.	2,400

DESIGNED: *[Signature]*
CHECKED: *[Signature]*
DRAWN: B.S.L. Ma, J. Robinson
CHECKED: G.R.

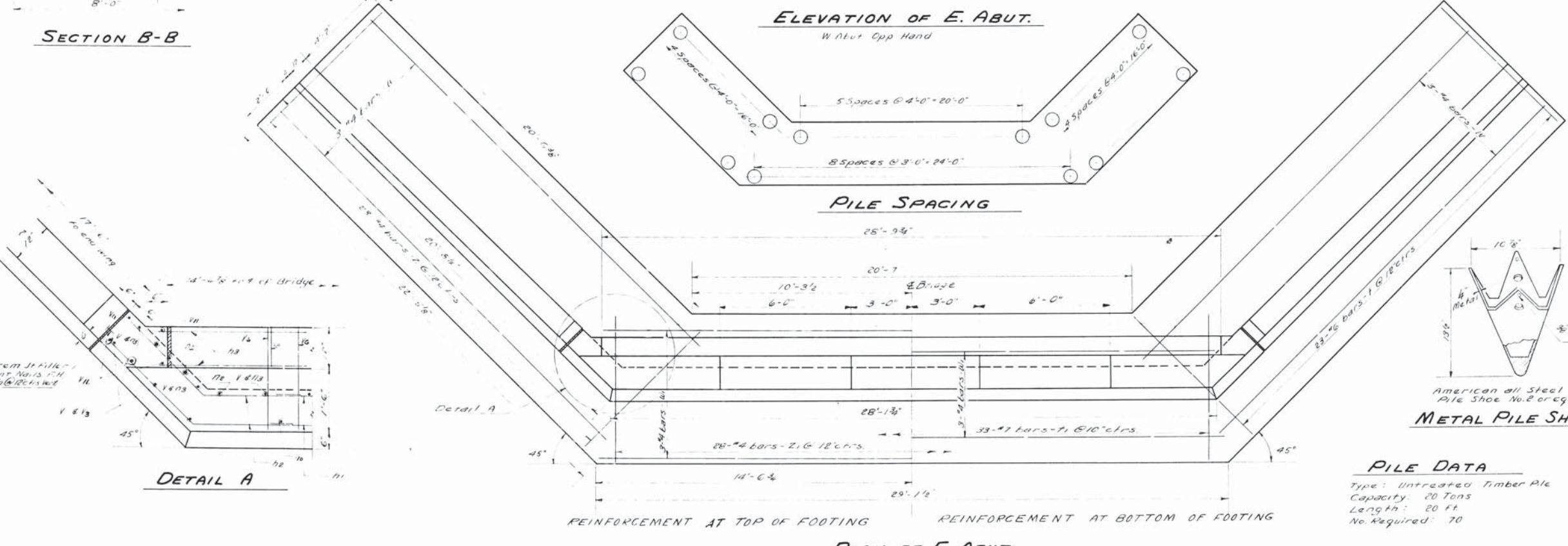
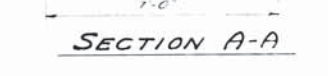
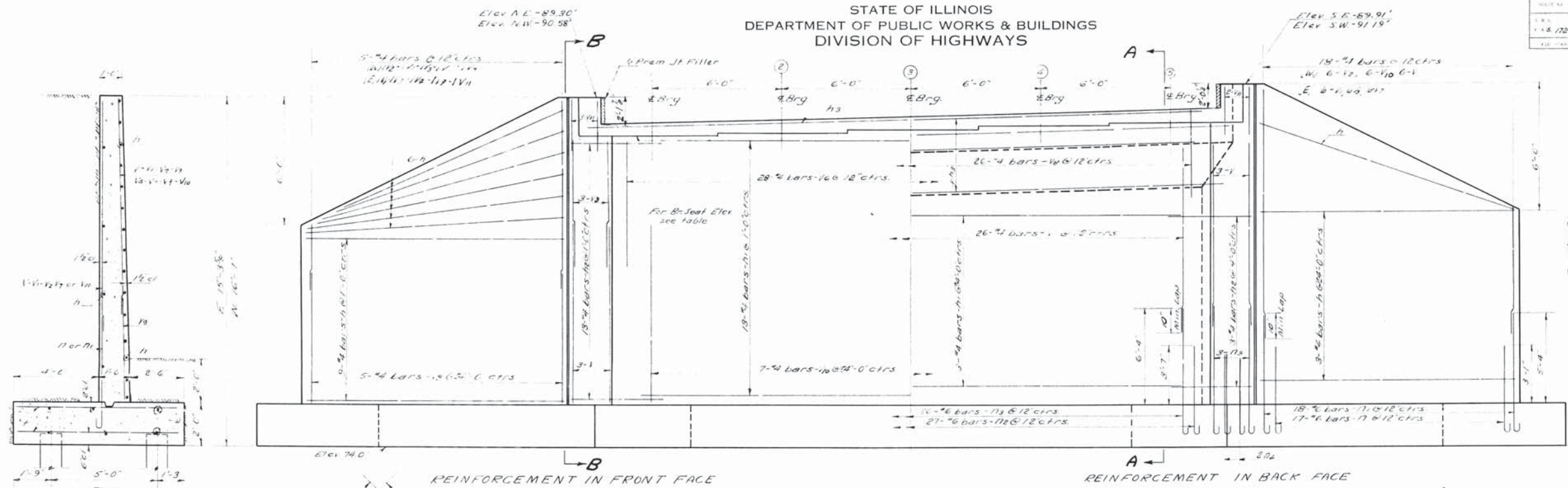
EXAMINED: *[Signature]*
PASSED: *[Signature]*
APPROVED: *[Signature]*
FEB. 24 1956



SUPERSTRUCTURE
F.A.S. RT. 172 SEC. 43 B
DEKALB COUNTY
STA. 75+50

STATE OF ILLINOIS
DEPARTMENT OF PUBLIC WORKS & BUILDINGS
DIVISION OF HIGHWAYS

PROJECT NO.	DEKALB	DEKALB	SHEET NO.	7
DATE	1-8-1922	43 B	DE KALB	9
DESIGNED BY	W. H. HARRIS	ENGINEER	ILL. ROAD BLDG. DIV.	S-756 (2)
				SHEET NO. 3 4 SHEETS



BILL OF MATERIAL (2 ABUTS)

BAR NO.	SIZE	LENGTH	SHAPE
h1	16	17'-3"	—
h1	32	25'-0"	—
h2	64	5'-0"	—
h3	20	15'-6"	—
V10	26	8'-3"	—
V11	22	3'-6"	—
h1	68	5'-9"	—
h1	72	7'-6"	—
h2	62	5'-9"	—
h3	64	8'-6"	—
V	30	6'-0"	—
V1	16	9'-0"	—
V2	14	5'-3"	—
V3	28	7'-3"	—
V4	2	6'-6"	—
V5	54	7'-3"	—
V6	14	2'-9"	—
V7	52	6'-0"	—
V8	22	5'-3"	—
V9	62	7'-9"	—
V10	66	6'-9"	—
V11	24	22'-0"	—
V12	12	29'-0"	—
Z	92	7'-9"	—
Z1	56	6'-9"	—
Class A Concrete CUBYDS			159.1
Reinforcement Bars LBS			9320
Untreated Timber Piles LINT			1400
Metal Pile Shoe Each			70

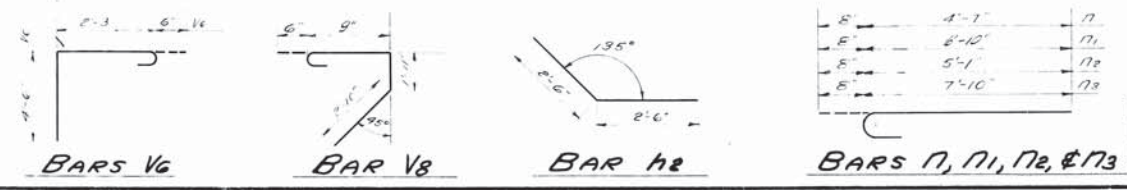
PILE DATA

Type: Untreated Timber Pile
Capacity: 20 Tons
Length: 20 ft
No. Required: 70

DESIGNED: *[Signature]*
CHECKED: *[Signature]*
DRAWN: R. L. M. J. Sandoval
CHECKED: *[Signature]*

EXAMINED: *[Signature]*
PASSED: *[Signature]*
APPROVED: *[Signature]*

FEB. 24 1922



ABUTMENTS
F.A.S. RT. 172 SEC. 43 B
DEKALB COUNTY
STATION 75+50

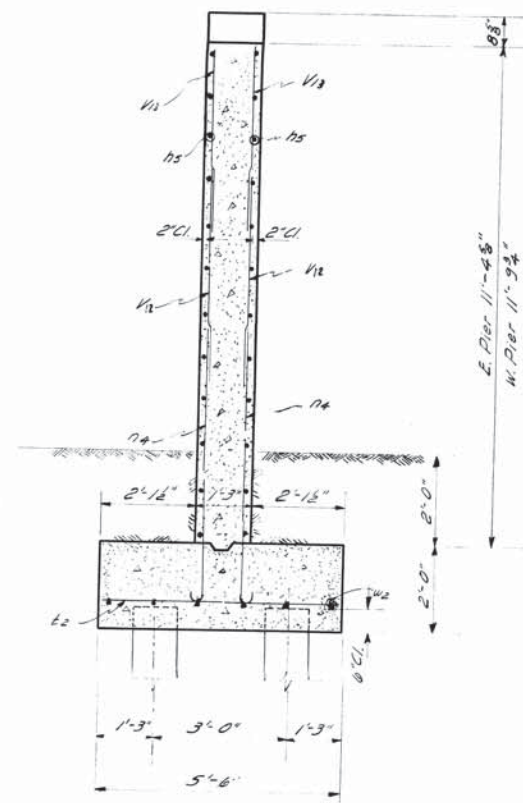
STATE OF ILLINOIS
DEPARTMENT OF PUBLIC WORKS & BUILDINGS
DIVISION OF HIGHWAYS

ROUTE NO.	SECTION	COUNTY	TOTAL SHEETS	SHEET NO.
F.A.S. 172	43 B	DE KALB	9	8
FED. ROAD DIST. NO. 7	ILLINOIS	FED. AID PROJECT	S-756 (2)	

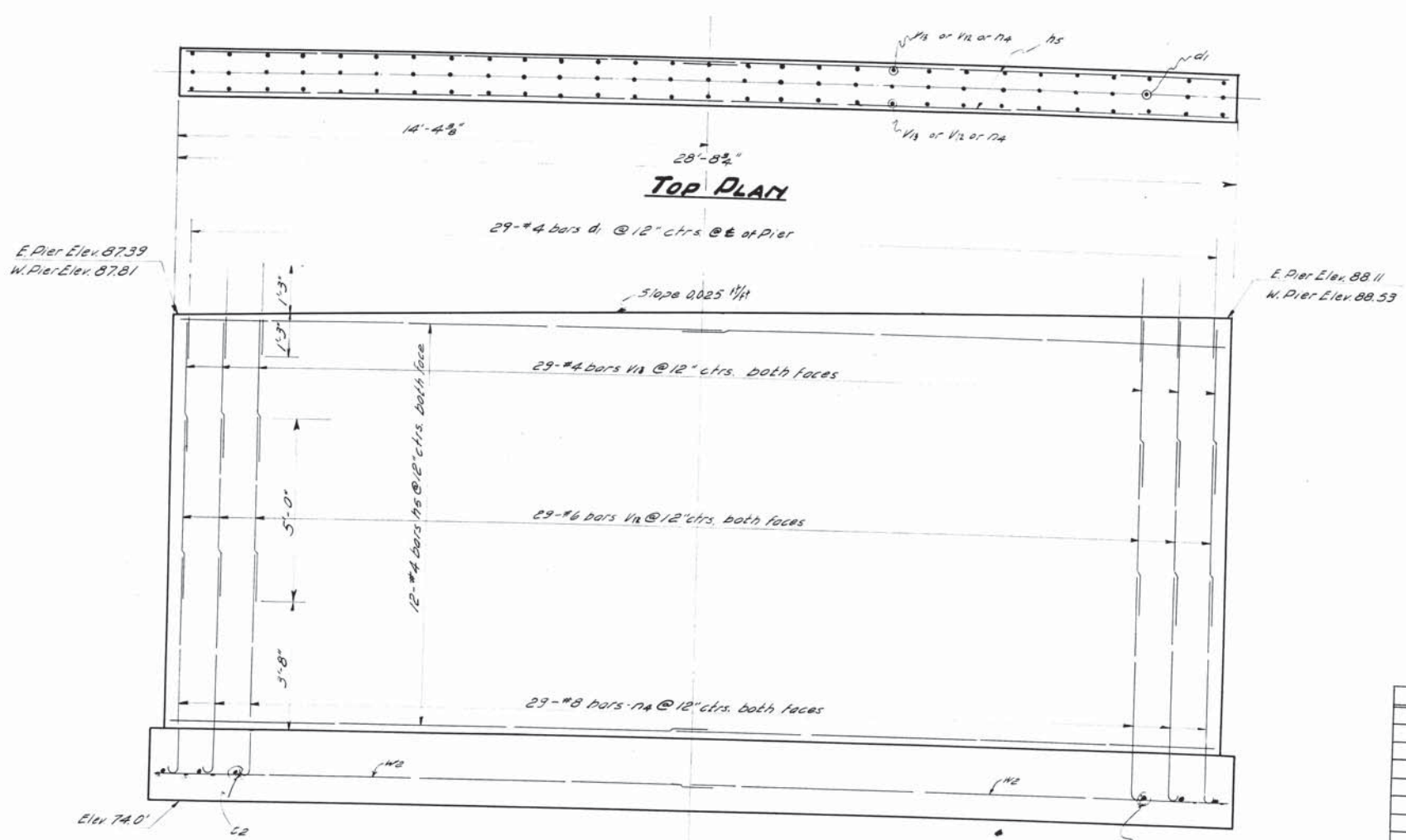
SHEET NO. 4
4 SHEETS

PILE DATA

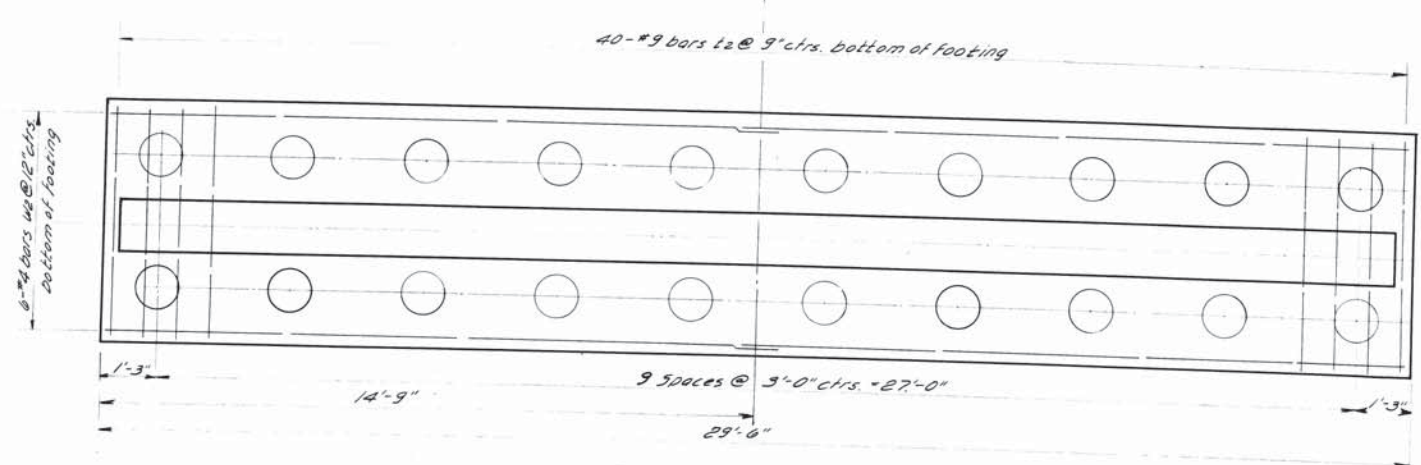
Type: Untreated Timber Piles
Capacity: 20 tons
Length: 20 ft.
No. Required: 40



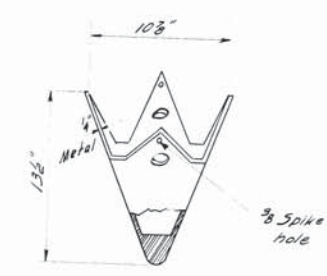
END VIEW



ELEVATION



FOOTING PLAN



American all steel Pile Shoe
No. 2 or equal

METAL PILE SHOE



BAR n4

BILL OF MATERIAL (2 PIERS)

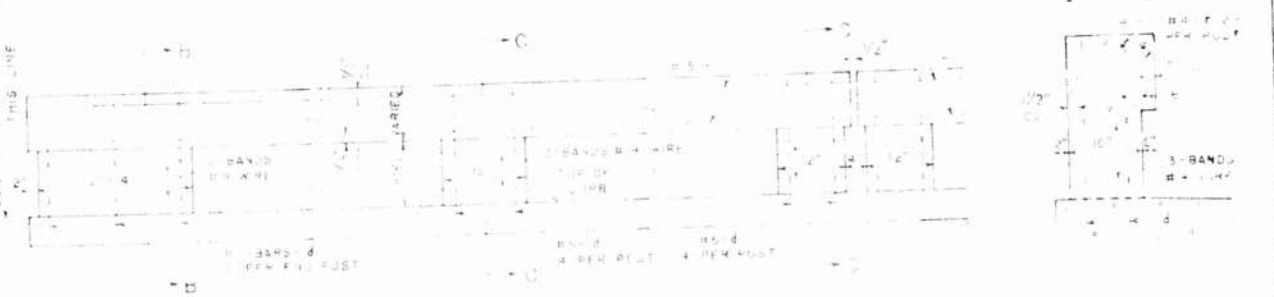
BAR	NO.	SIZE	LENGTH	SHAPE	
d1	58	#4	2'-6"	—	
n5	96	#4	14'-9"	—	
n4	116	#8	7'-6"	—	
n2	116	#6	5'-0"	—	
n1	116	#4	4'-9"	—	
t2	80	#9	5'-3"	—	
w2	24	#4	15'-3"	—	
Class 1 Concrete				Cu Yds	55.8
Reinforcement Bars				Lbs	6,590
Metal Pile Shoe				Each	39
Untreated Timber Piles				Lin. Ft	780
Test Pile					one

DESIGNED: *Bernard S. L. Ma*
CHECKED: *Romer*
DRAWN: *B. S. L. Ma*
CHECKED: *G.R.*

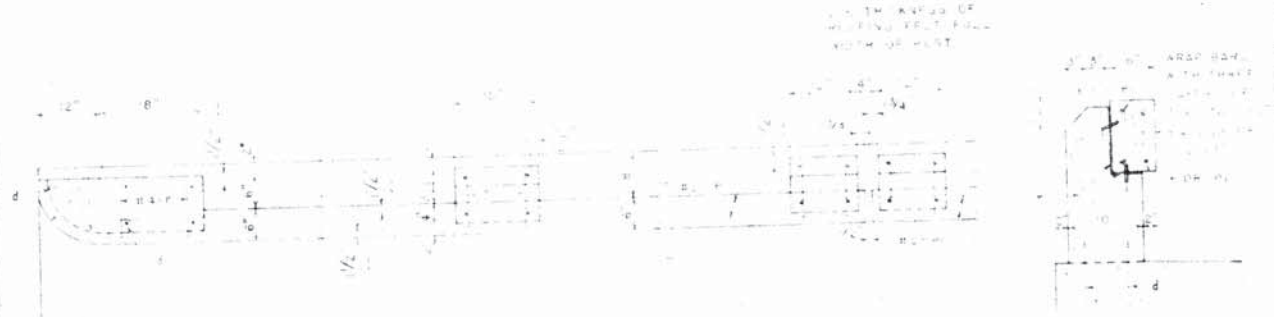
EXAMINED: *W.M. Dineen*
PASSED: *Chen*
APPROVED: *R.P. Bateman*
FEB. 24 1956
ENGINEER OF BRIDGE AND TRAFFIC STRUCTURES
ENGINEER OF DESIGN
CHIEF HIGHWAY ENGINEER

PIERS
F.A.S. Rt. 172 Sec. 43 B
DEKALB COUNTY
STA. 75+50

STATE OF ILLINOIS
DEPARTMENT OF PUBLIC WORKS & BUILDINGS
DIVISION OF HIGHWAYS



SECTION B-B



SECTION C-C



TYPE 3A TYPE 3B TYPE 3C

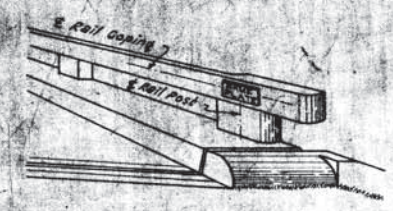
REINFORCING WIRE SHALL BE INCLUDED IN THE QUANTITY LIST FOR EACH HANDRAIL. CONCRETE SHALL BE PLACED IN PLACE AND VIBRATED. SEE BRIDGE PLANS FOR SPACING OF POSTS. USE JOINTLY FIRST IN LINE WHEN LIGHT AND HEAVY WHEELS CALLED FOR ON BRIDGE PLANS.

TYPE	QUANTITY	PER FOOT	PER FOOT
TYPE 3A	1.00	0.10	0.10
TYPE 3B	1.00	0.10	0.10
TYPE 3C	1.00	0.10	0.10

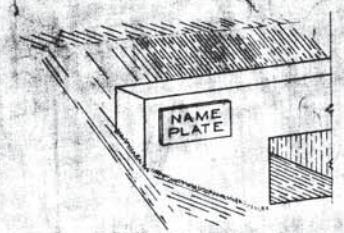
DETAILS OF REINFORCED CONCRETE HANDRAIL TYPES 3A-3B & 3C

DESIGNED BY	W. A. Samsarian Jr.
EXAMINED BY	...
DATE	...

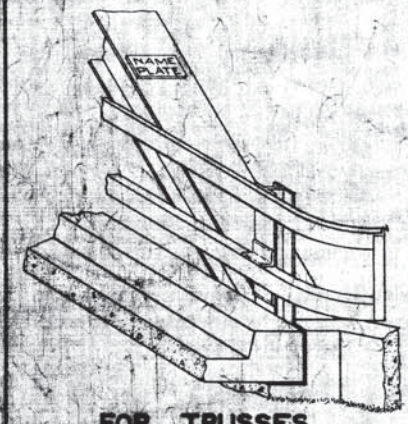
STATE OF ILLINOIS
DEPARTMENT OF PUBLIC WORKS & BLDGS
DIVISION OF HIGHWAYS



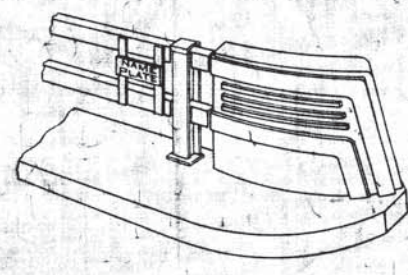
FOR CONCRETE RAILS



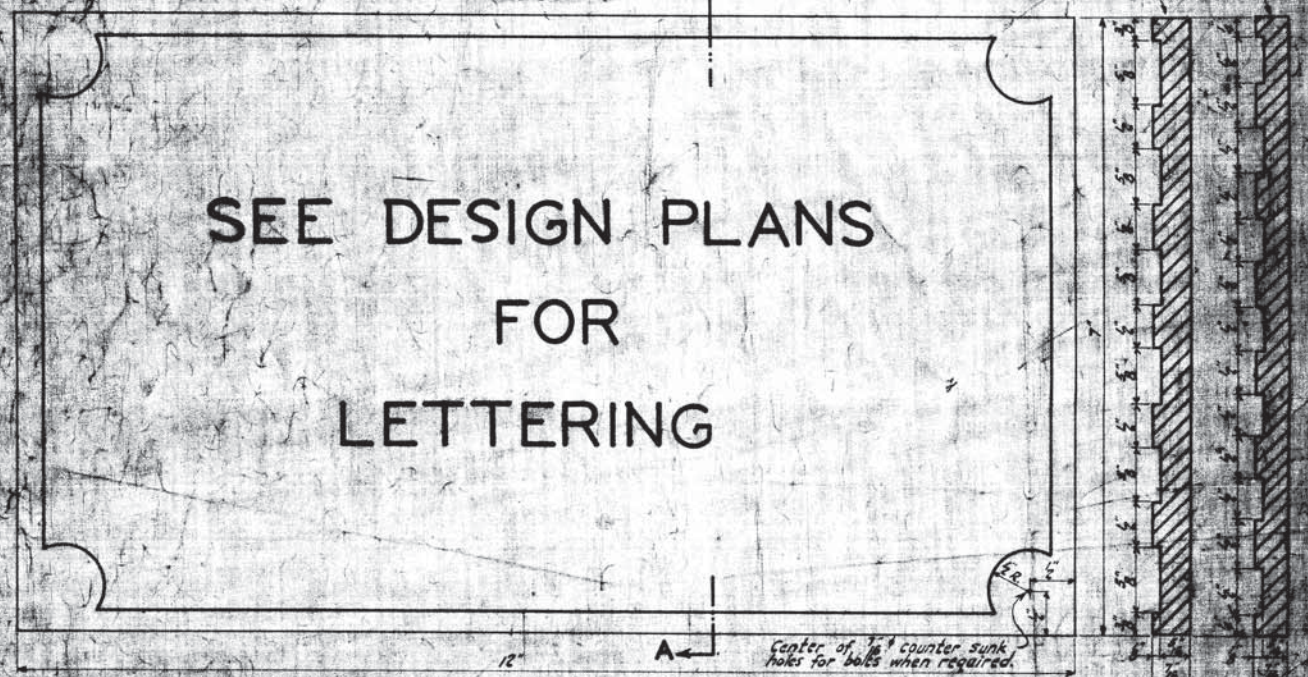
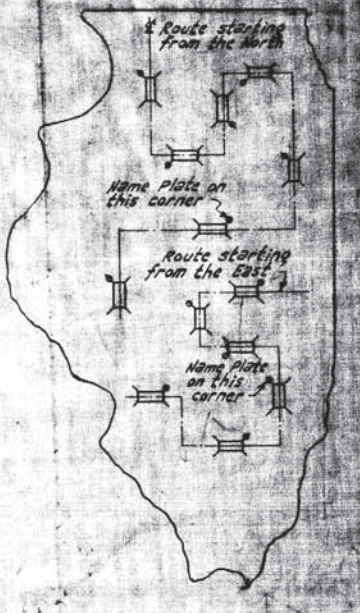
FOR CULVERT HEADWALLS



FOR TRUSSES



FOR STEEL RAILS



SEE DESIGN PLANS FOR LETTERING

SEC. A-A

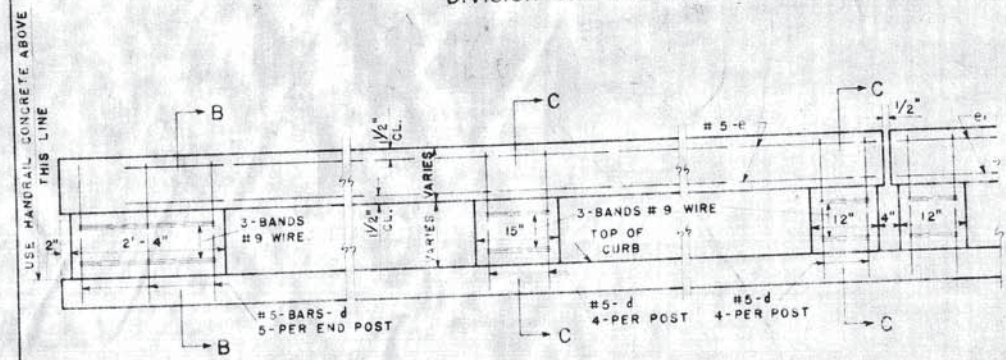
MATERIAL: Best quality brass or bronze.
 BORDER & LETTERING: Raised 1/8 inch. Square cut and not tapered. Top surface polished.
 FOR CONCRETE RAILS, CULVERT HEADWALLS & SUBWAYS: Four legs of least three inches long, cast on back of plate.
 FOR STEEL TRUSS SPAN: Plate to be fastened on steel member at fabricating shop by bolting around entire perimeter of plate.
 FOR STEEL RAILS: Plate to be bolted on with 4x4 brass or bronze hex head bolts.
 FOR CONCRETE RAILS: Plate to be centered on 4" of rail post and 4" of handrail coping.
 FOR STEEL TRUSS SPAN: Brace to end post about five feet above roadway.
 FOR STEEL RAILS: Place midway between horizontal rail members.
 FOR SUBWAYS: See design plans for location.

DESIGNED BY: W. A. Samsarian Jr.
 EXAMINED BY: ...
 DATE: ...

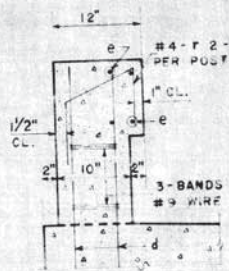
DETAIL OF NAME PLATE FOR BRIDGES

STATE OF ILLINOIS
DEPARTMENT OF PUBLIC WORKS & BUILDINGS
DIVISION OF HIGHWAYS

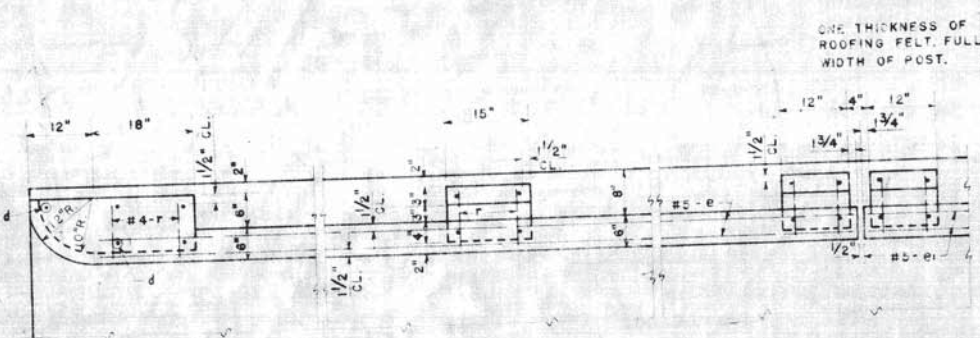
SHEET NO. 1
OF 1 SHEET



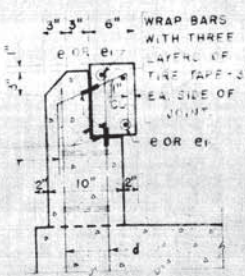
INSIDE ELEVATION OF RAIL



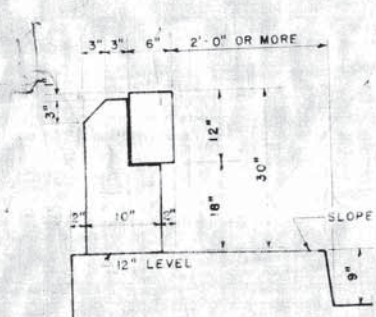
SECTION B-B



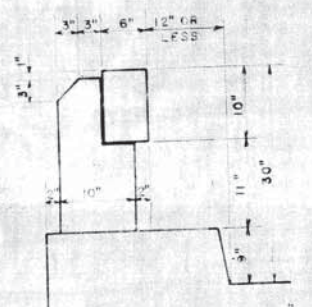
PLAN OF RAIL



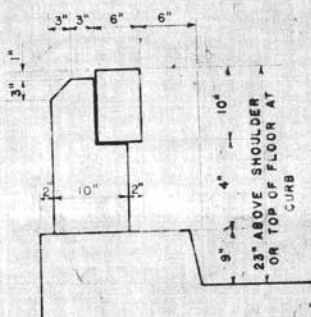
SECTION C-C



TYPE 3A



TYPE 3B



TYPE 3C

NOTE:
COST OF #9 WIRE SHALL BE INCLUDED IN THE CONTRACT
UNIT PRICE FOR HANDRAIL CONCRETE
SEE BRIDGE PLANS FOR SPACING OF POSTS
USE DOUBLE POST & 1/2" OPEN JOINT ONLY WHERE CALLED FOR ON BRIDGE PLANS.

QUANTITIES

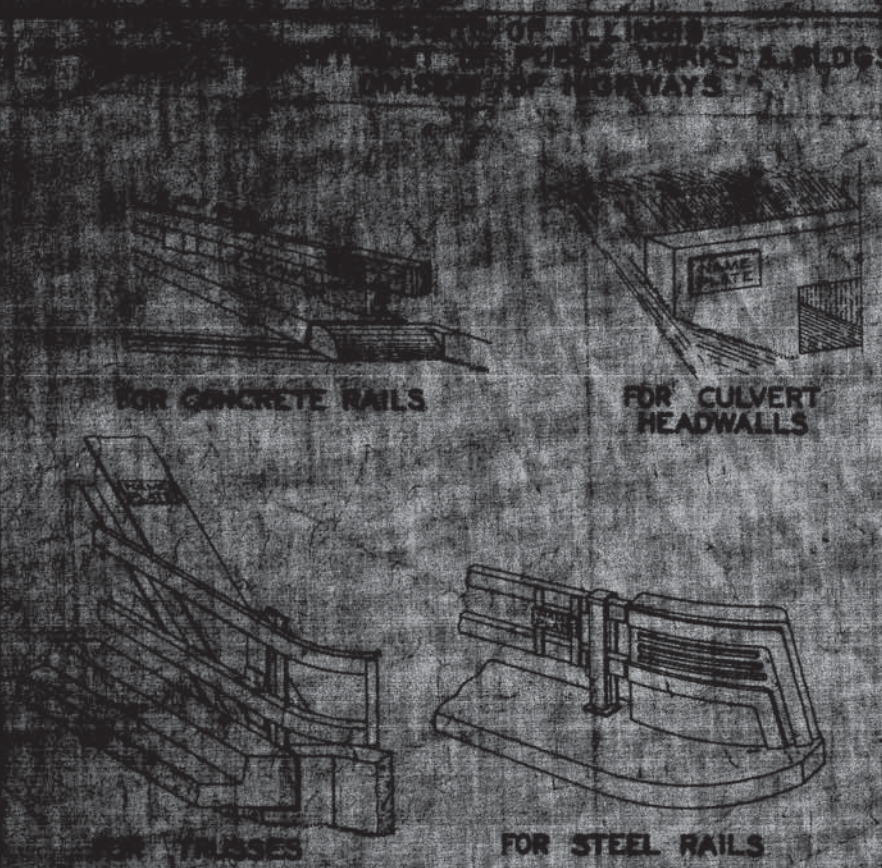
	END POST CU. YDS.	INTERIOR POST CU. YDS.	DOUBLE POST EACH CU. YDS.
TYPE 3A RAIL	1645	1774	0619
TYPE 3B RAIL	1365	0512	0410
TYPE 3C RAIL	0976	0285	0229

TYPE 3A RAIL = 5 CU. FT. PER FT. OF RAIL BETWEEN
TYPE 3B & 3C RAIL = 417 CU. FT. PER FT. OF RAIL (END POSTS)

DETAILS OF
REINFORCED CONCRETE HANDRAIL
TYPES 3A-3B & 3C

DESIGNED	EXAMINED
CHECKED	PASSED
DRAWN	APPROVED
CHECKED	

STANDARD 2070 RB



SEE DESIGN PLANS
FOR
LETTERING