

PRINT_ORGANIZER.BV.plt 2/17/2021 2:56:02 PM = PLOTTED

INDEX OF SHEETS

04-23-2021 LETTING ITEM 163

- 1 COVER SHEET
- 2 GENERAL NOTES AND SUMMARY OF QUANTITIES
- 3 TYPICAL SECTIONS
- 4 SCHEDULE OF QUANTITIES
- 5 PLAN AND PROFILE
- 6 TRAFFIC CONTROL PLAN
- 7-8 EROSION CONTROL PLAN
- 9 GENERAL PLAN AND ELEVATION
- 10-11 DOUBLE BARREL BOX CULVERT DETAILS
- 12-14 BORING LOGS
- 15-19 CROSS SECTIONS

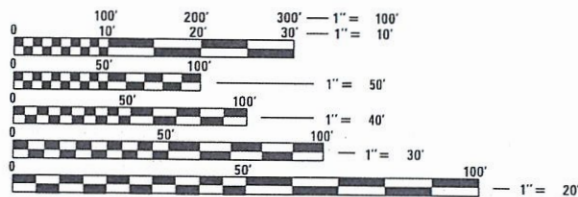
STANDARDS

- 000001-08 STANDARD SYMBOLS, ABBREVIATIONS AND PATTERNS
- 001001-02 AREAS OF REINFORCEMENT BARS
- 280001-07 TEMPORARY EROSION CONTROL SYSTEMS
- 515001-04 NAME PLATES FOR BRIDGES
- 701301-04 LANE CLOSURE, 2L, 2W, SHORT TIME OPERATIONS
- 701901-08 TRAFFIC CONTROL DEVICES
- 720001-01 SIGN PANEL MOUNTING DETAILS
- 720006-04 SIGN PANEL ERECTION DETAILS
- 720011-01 METAL POSTS FOR SIGNS, MARKERS & DELINEATORS
- 725001-01 OBJECT AND TERMINAL MARKERS
- 728001-01 TELESCOPING STEEL SIGN SUPPORT
- 729001-01 APPLICATIONS OF TYPES A & B METAL POSTS (FOR SIGNS AND MARKERS)
- 780001-05 TYPICAL PAVEMENT MARKINGS
- BLR 21-9 TYPICAL APPLICATION OF TRAFFIC CONTROL DEVICES FOR CONSTRUCTION ON RURAL LOCAL ROADS
- BLR 22-7 TYPICAL APPLICATION OF TRAFFIC CONTROL DEVICES FOR CONSTRUCTION ON RURAL LOCAL HIGHWAYS

SEE SHEET 2 FOR A LIST OF UTILITIES.

ATTENTION CONTRACTORS

THE ILLINOIS DEPARTMENT OF TRANSPORTATION BUREAU OF MATERIALS AND PHYSICAL RESEARCH. "PROJECT PROCEDURES GUIDE" IS APPLICABLE TO THIS PROJECTS



FULL SIZE PLANS HAVE BEEN PREPARED USING STANDARD ENGINEERING SCALES. REDUCED SIZED PLANS WILL NOT CONFORM TO STANDARD SCALES. IN MAKING MEASUREMENTS ON REDUCED PLANS, THE ABOVE SCALES MAY BE USED.

J.U.L.I.E. DIG NO. X2400992
 JOINT UTILITY LOCATION INFORMATION FOR EXCAVATION
 1-800-892-0123
 OR 811

PROJECT ENGINEER – ATK
PROJECT MANAGER – MRL
CONTRACT NO. 87743



Know what's below. Call before you dig.

STATE OF ILLINOIS

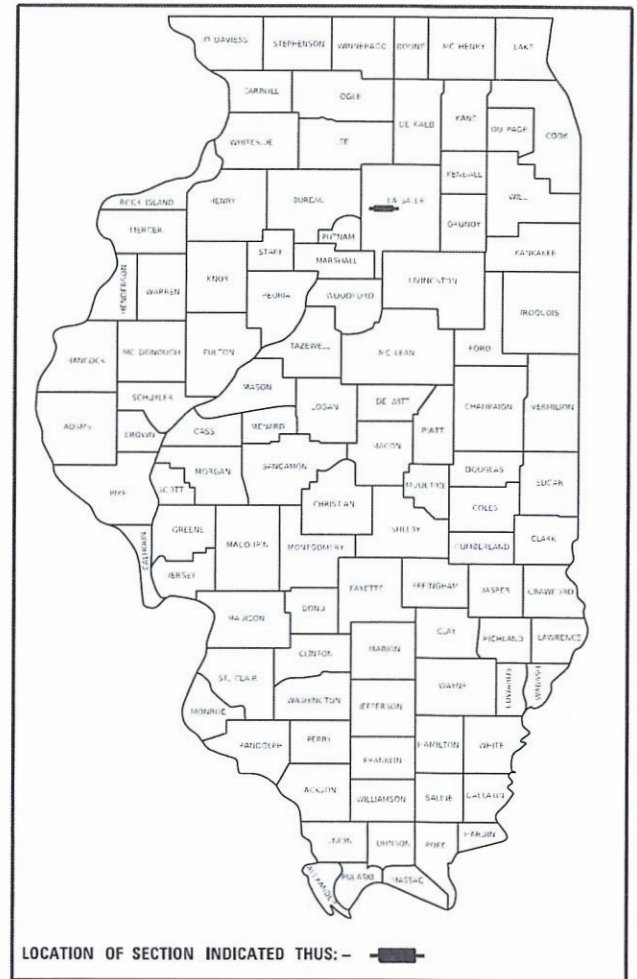
DEPARTMENT OF TRANSPORTATION

PLAN FOR PROPOSED FEDERAL AID PROJECT SURFACE TRANSPORTATION RURAL – BRIDGE (FY-21)

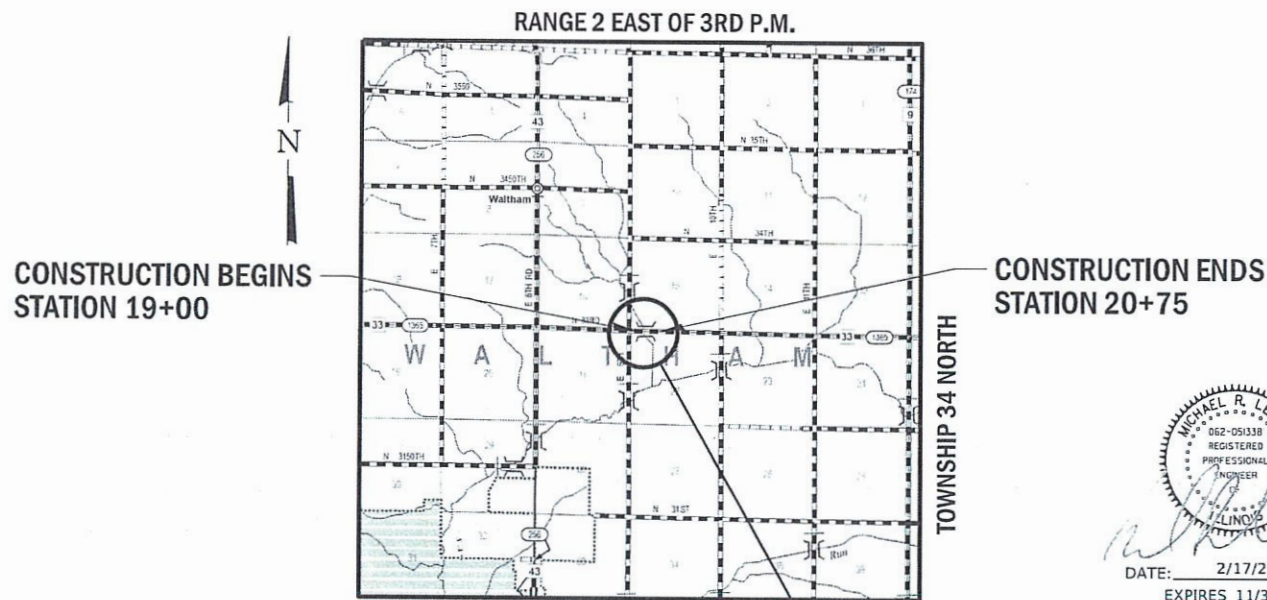
**F.A.S. HIGHWAY 1365 (N. 33RD ROAD)
 SECTION 18-00807-00-DR
 OVER PECUMSAUGAN CREEK
 PROJECT D3D0(657)
 STRUCTURE REPLACEMENT
 LASALLE COUNTY**

C-93-009-21

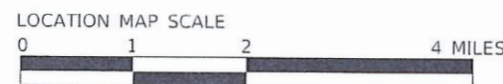
CO. HWY.	SECTION	COUNTY	TOTAL SHEETS	SHEET NO.
33	18-00807-00-DR	LASALLE	19	1
ILLINOIS WHA # 1412019				



LASALLE COUNTY HIGHWAY DEPARTMENT	
APPROVED	<i>[Signature]</i> FEB 19 2021 LASALLE COUNTY ENGINEER
PASSED	<i>[Signature]</i> FEBRUARY 19, 2021 DISTRICT 3 LOCAL ROADS & STREETS ENGINEER
RELEASING FOR BID BASED ON LIMITED REVIEW	<i>[Signature]</i> FEBRUARY 19, 2021 REGION 2 ENGINEER



PROPOSED STRUCTURE: S.N. 050-3624
 A DOUBLE BARREL (13'-0" X 9'-0") REINFORCED CONCRETE BOX CULVERT AT STA. 20+00.00. NO SKEW.



GROSS LENGTH = 175 FT. = 0.03 MILE
 NET LENGTH = 175 FT. = 0.03 MILE

[Signature]
 DATE: 2/17/21
 EXPIRES 11/30/21

FUNCTIONAL CLASSIFICATION
MAJOR COLLECTOR (RURAL)
DESIGN SPEED 50 MPH
2020 ADT - 601
3R GUIDELINES

WILLETT HOFMANN & ASSOCIATES INC
 ENGINEERING ARCHITECTURE LAND SURVEYING

809 EAST 2ND STREET, DIXON, IL 61021-0367
 T: 815-284-3381 DESIGN FIRM: #184-000918

FILE # S:\PROJECTS\2019\1412019.LCH\DESIGN\CAD_SHEETS\1412019.Cover_1.dgn

HALFSIZE_Bk.plt.ctb 3/18/2021 7:07:34 AM = PLOTTED

GENERAL NOTES

ALL WORK AND MATERIALS SHALL BE IN ACCORDANCE WITH THE ILLINOIS DEPARTMENT OF TRANSPORTATION (IDOT) STANDARD SPECIFICATIONS FOR ROAD AND BRIDGE CONSTRUCTION ADOPTED APRIL 1, 2016 AND LATEST SUPPLEMENTAL SPECIFICATIONS AND RECURRING SPECIAL PROVISIONS, UNLESS OTHERWISE NOTED ON THESE PLANS OR SPECIAL PROVISIONS.

EXISTING STRUCTURES (INCLUDING FOUNDATIONS, WALLS, CISTERNS, WELLS, OR OTHER UNDERGROUND STRUCTURES) WITHIN THE RIGHT OF WAY SHALL BE REMOVED IN ACCORDANCE WITH ARTICLE 501.04 AND 501.05 OF THE STANDARD SPECIFICATIONS, WITHOUT ADDITIONAL COMPENSATION, UNLESS OTHERWISE NOTED IN THE PLANS OR SPECIAL PROVISIONS.

NO OVERHAUL HAS BEEN COMPUTED AND NONE SHALL BE PAID FOR FROM ANY SOURCE. THE FINAL TOP FOUR INCHES OF SOIL IN ANY RIGHT-OF-WAY AREA DISTURBED BY THE CONTRACTOR MUST BE A COHESIVE SOIL CAPABLE OF SUPPORTING VEGETATION AND APPROVED BY THE ENGINEER.

ALL UTILITY POLES, GAS PIPES, ETC. IN THE WAY OF THE IMPROVEMENTS SHALL BE MOVED BY THE UTILITIES PRIOR TO CONSTRUCTION AND SHALL NOT BE INCLUDED IN THE CONTRACT. THE CONTRACTOR SHALL NOTIFY THE RESPECTIVE UTILITIES TO MAKE THE NECESSARY ADJUSTMENTS PRIOR TO CONSTRUCTION.

THE LOCATION AND ELEVATION OF THE VARIOUS UNDERGROUND UTILITIES AS SHOWN ON THE PLANS ARE NOT TO BE TAKEN AS EXACT. THE CONTRACTOR SHALL USE SPECIAL CARE WHEN CONDUCTING CONSTRUCTION OPERATIONS NEAR THEM TO PREVENT DAMAGE.

THE LOCATION OF EXISTING FIELD TILES AND ANY OTHER PUBLIC OR PRIVATE UTILITIES AS SHOWN IN THE PLANS ARE NOT TO BE TAKEN AS EXACT. EXACT LOCATION OF ALL FIELD TILES AND UTILITIES IS TO BE DETERMINED IN THE FIELD BY THE CONTRACTOR.

THE CONTRACTOR SHALL BE RESPONSIBLE FOR PROTECTING UTILITY PROPERTY DURING CONSTRUCTION OPERATIONS AS OUTLINED IN ARTICLE 107.39 OF THE STANDARD SPECIFICATIONS. ANY UTILITY PROPERTY DAMAGED DURING CONSTRUCTION SHALL BE REPAIRED OR REPLACED TO THE SATISFACTION OF THE OWNER AT THE CONTRACTOR'S EXPENSE.

THE UTILITIES LOCATED WITHIN THE PROJECT LIMITS OR IMMEDIATELY ADJACENT TO THE PROJECT CONSTRUCTION LIMITS INCLUDE:

AT&T DISTRIBUTION ATTN: MICHAEL WASSOM PH: 630-573-5699 EM: MW3549@ATT.COM	LASALLE COUNTY HIGHWAY DEPARTMENT ATTN: BEN ROSS PH: 815-434-0743 EM: BROSS@LASALLECOUNTY.ORG
---	--

NATURAL GAS PIPELINE CO. ATTN: MARK CAVASOS PH: 713-420-4363 EM: MARK.CAVASOS@KINDERMORGAN.COM	NICOR GAS ATTN: CHIP PARROTT PH: 630-388-3319 EM: GASMAPS@ALGERESCOURCES.COM
---	---

A MINIMUM OF 48 HOURS ADVANCE NOTICE IS REQUIRED FOR NON-EMERGENCY WORK.

WHERE SECTION OR SUBSECTION MONUMENTS ARE ENCOUNTERED, THE ENGINEER SHALL BE NOTIFIED BEFORE SUCH MONUMENTS ARE REMOVED. THE CONTRACTOR SHALL PROTECT AND CAREFULLY PRESERVE ALL PROPERTY MARKERS, MONUMENTS, AND RIGHT OF WAY PINS UNTIL THE OWNER, AN AUTHORIZED SURVEYOR, OR AGENT HAS WITNESSED OR OTHERWISE REFERENCED THEIR LOCATION. ANY PROPERTY MARKERS, SECTION OR SUBSECTION MONUMENTS, UNLESS REFERENCED, DAMAGED BY THE CONTRACTOR SHALL BE REPLACED AT THE EXPENSE OF THE CONTRACTOR.

ALL BORROW/WASTE/USE SITES MUST BE APPROVED BY THE ENGINEER PRIOR TO REMOVING ANY MATERIAL FROM THE PROJECT OR INITIATING ANY EARTHMOVING ACTIVITIES, INCLUDING TEMPORARY STOCKPILING OUTSIDE THE LIMITS OF CONSTRUCTION.

WHERE THE PLANS CALL FOR EXISTING PAVEMENT TO BE SAWCUT AND REMOVED, THE EXISTING SHALL BE SAWED IN A NEAT, STRAIGHT LINE. COST OF SAWING AND PAVEMENT REMOVAL SHALL BE INCLUDED IN THE CONTRACT UNIT PRICE BID PER EACH FOR REMOVAL OF EXISTING STRUCTURES.

REMOVAL OF STUMPS, PIPE CULVERTS, BRUSH AND TREES LESS THAN 6 INCH IN DIAMETER SHALL BE CONSIDERED INCIDENTAL TO EARTH EXCAVATION (SPECIAL).

SUMMARY OF QUANTITIES

CONSTRUCTION TYPE
CODE 0010

PAY CODE	ITEM	UNIT	QUANTITY
28000400	PERIMETER EROSION BARRIER	FOOT	467
28100111	STONE RIPRAP, CLASS A6	SQ YD	92
28200200	FILTER FABRIC	SQ YD	92
*30300112	AGGREGATE SUBGRADE IMPROVEMENT 12"	SQ YD	477
35101400	AGGREGATE BASE COURSE, TYPE B	TON	90
40600275	BITUMINOUS MATERIALS (PRIME COAT)	POUND	985
40600290	BITUMINOUS MATERIALS (TACK COAT)	POUND	99
40603080	HOT-MIX ASPHALT BINDER COURSE, 1L-19.0, N50	TON	98
40604050	HOT-MIX ASPHALT SURFACE COURSE, 1L-9.5, MIX "C", N50	TON	37
48101200	AGGREGATE SHOULDERS, TYPE B	TON	50
50100100	REMOVAL OF EXISTING STRUCTURES	EACH	1
50800205	REINFORCEMENT BARS, EPOXY COATED	POUND	28970
51500100	NAME PLATES	EACH	1
54003000	CONCRETE BOX CULVERTS	CU YD	202
59100100	GEOCOMPOSITE WALL DRAIN	SQ YD	155
63200310	GUARDRAIL REMOVAL	FOOT	268
67100100	MOBILIZATION	L SUM	1
Δ 72500300	OBJECT MARKER - TYPE 3	EACH	4
Δ 72900100	METAL POST - TYPE A	FOOT	36
*Z0013798	CONSTRUCTION LAYOUT	L SUM	1
*X0900064	MEMBRANE WATERPROOFING SYSTEM FOR BURIED STRUCTURES	SQ YD	155
*X2020410	EARTH EXCAVATION (SPECIAL)	CU YD	220
*X2070304	POROUS GRANULAR EMBANKMENT, SPECIAL	CU YD	434
*X7010216	TRAFFIC CONTROL AND PROTECTION, (SPECIAL)	L SUM	1
*XX006343	SEEDING (COMPLETE)	SQ YD	792

* INDICATES A SPECIAL PROVISION

Δ SPECIALTY ITEMS

FILE = S:\PROJECTS\2019\1412D19_LCH\DESIGN\CAD_SHEETS\1412D19_General Notes & Summary of Quantities.dgn

REVISION	DATE	BY	REMARKS	DESIGNED	ATK
				DRAWN	DAN
				REVIEWED	MCH
				APPROVED	MRL

LASALLE COUNTY
F.A.S. 1365 OVER PECUMSAUGAN CREEK
STATION 20+00



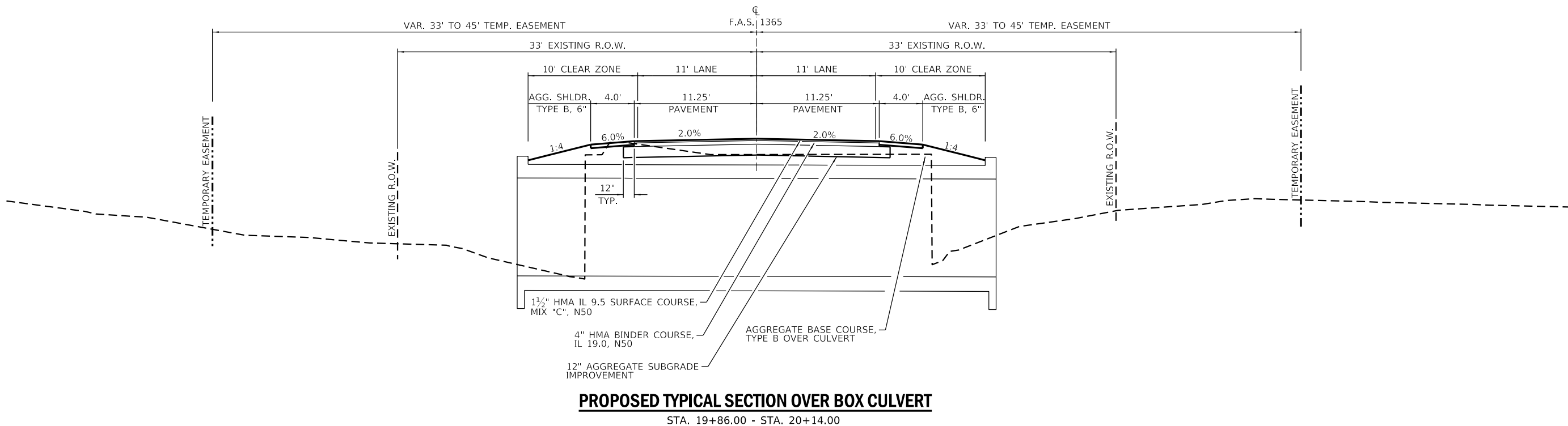
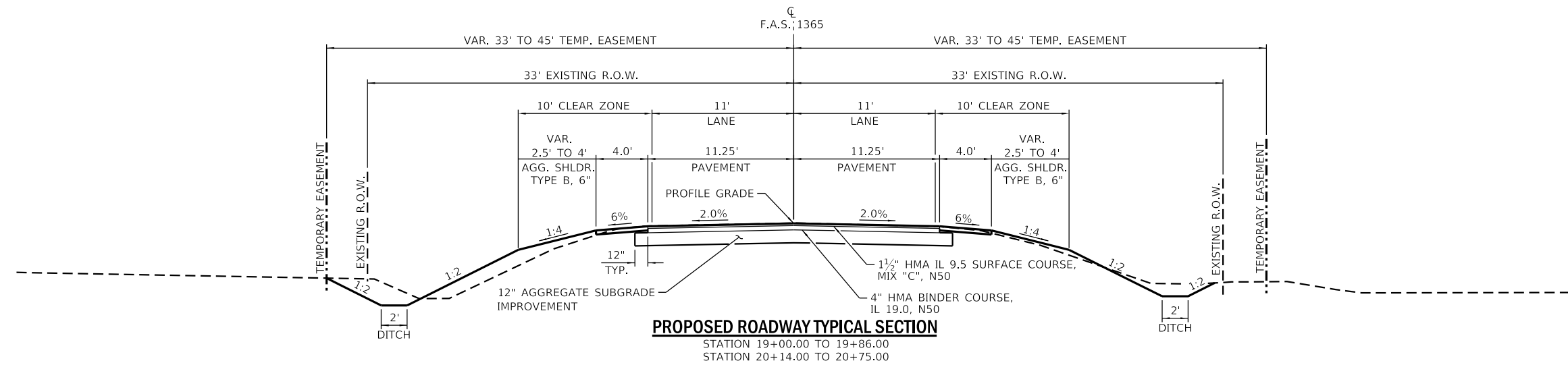
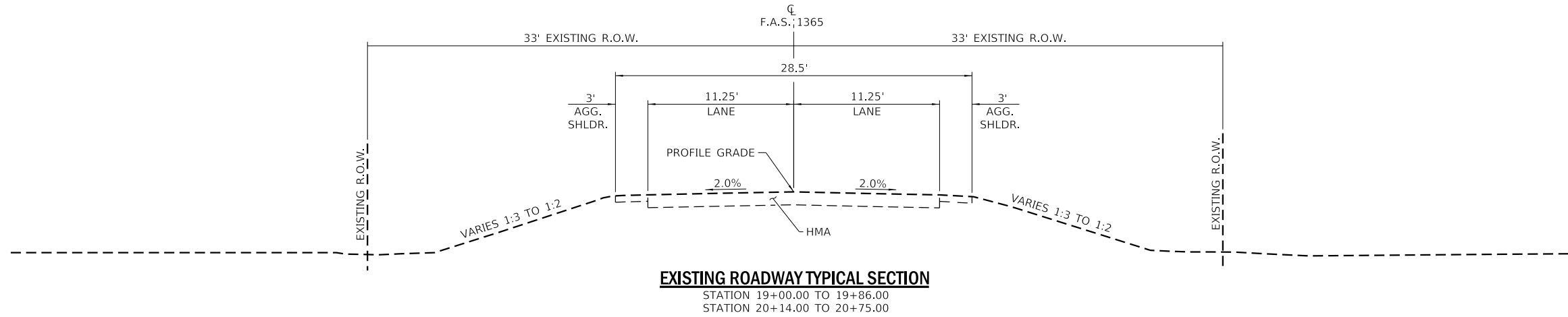
WILLET HOFMANN & ASSOCIATES INC
ENGINEERING ARCHITECTURE LAND SURVEYING
807 EAST 2ND STREET, DEKOR, IL 61021-0367
T: 815-284-3341 DESIGN THREE 815-809916

GENERAL NOTES AND SUMMARY OF QUANTITIES

SHEET NO. 1 OF 1 SHEETS

F.A.S. RTE.	SECTION	COUNTY	TOTAL SHEETS	SHEET NO.
1365	18-00807-00-DR	LASALLE	19	2
WHA# 1412D19		CONTRACT NO. 87743		
ILLINOIS FED. AID PROJECT				

This document is the copyrighted property of Willett, Hofmann & Associates, Inc., and may not be copied or used by any person without written permission. © Copyright 2019 Willett, Hofmann & Associates, Inc.



REVISION	DATE	BY	REMARKS

DESIGNED	ATK
DRAWN	DAN
REVIEWED	MCW
APPROVED	MRL

LASALLE COUNTY
F.A.S. 1365 OVER PECUMSAUGAN CREEK
STATION 20+00

WILLET HOFMANN & ASSOCIATES INC
 ENGINEERING ARCHITECTURE LAND SURVEYING
 809 EAST 2ND STREET, DIXON, IL 61021-0367
 T: 815-284-3381 DESIGN FIRM: #184-000918

TYPICAL SECTIONS
SHEET NO. 1 OF 1 SHEETS

F.A.S. RTE.	SECTION	COUNTY	TOTAL SHEETS	SHEET NO.
1365	18-00807-00-DR	LASALLE	19	3
WHA# 1412D19		CONTRACT NO. 87743		
ILLINOIS FED. AID PROJECT				

SCHEDULE OF QUANTITIES

PERIMETER EROSION BARRIER		
STATION	50	REMARKS
	467	
PROJECT TOTAL	467	
28000400		

AGGREGATE SUBGRADE IMPROVEMENT, 12"		
STATION	SQ YD	REMARKS
STA 19+00 TO 20+75	477	
PROJECT TOTAL	477	
30300112		

AGGREGATE BASE COURSE, TYPE B		
STATION	TON	REMARKS
LT & RT STA 19+86 TO 20+14	90	2.04 TONS/CU YD
PROJECT TOTAL	90	
35101400		

BITUMINOUS MATERIALS (PRIME COAT)		
STATION	POUND	REMARKS
STA 19+00 TO 20+75	985	0.25 LB./SQ. FT. OVER AGG.
PROJECT TOTAL	985	
40600275		

BITUMINOUS MATERIALS (TACK COAT)		
STATION	POUND	REMARKS
STA 19+00 TO 20+75	99	0.025 LB./SQ. FT. OVER BIT.
PROJECT TOTAL	99	
40600290		

HOT-MIX ASPHALT BINDER COURSE, IL-19.0, N50		
STATION	TON	REMARKS
STA 19+00 TO 20+75	98	4" MAINLINE 4" * 112 LBS/SQ YD/IN
PROJECT TOTAL	98	
40603080		

SCHEDULE OF QUANTITIES - CONT.

HOT-MIX ASPHALT SURFACE COURSE MIX "C", N50		
STATION	TON	REMARKS
STA 19+00 TO 20+75	37	1.5" MAINLINE 1 1/2" * 112 LBS/SQ YD/IN
PROJECT TOTAL	37	
40604050		

AGGREGATE SHOULDERS, TYPE B		
STATION	TON	REMARKS
LT & RT STA 19+00 TO 20+75	50	0.3416 TONS/SQ YD PER 6"
PROJECT TOTAL	50	
48101200		

GUARDRAIL REMOVAL		
STATION	FEET	REMARKS
LT & RT STA 19+33 TO 20+67	268	
PROJECT TOTAL	268	
63200310		

OBJECT MARKER - TYPE 3		
STATION	EACH	REMARKS
LT STA 19+85	1	POST MOUNTED
RT STA 19+85	1	POST MOUNTED
LT STA 20+15	1	POST MOUNTED
RT STA 20+15	1	POST MOUNTED
	1	
PROJECT TOTAL	4	
72500300		

METAL POST - TYPE A		
STATION	FOOT	REMARKS
LT STA 19+85	9	OBJECT MARKER (X1)
RT STA 19+85	9	OBJECT MARKER (X1)
LT STA 20+15	9	OBJECT MARKER (X1)
RT STA 20+15	9	OBJECT MARKER (X1)
PROJECT TOTAL	36	
72900100		

SCHEDULE OF QUANTITIES - CONT.

SEEDING (COMPLETE)		
STATION	SQ. YD.	REMARKS
LT & RT STA 19+00 TO 20+75	792	
PROJECT TOTAL	792	
X2501020		

C.H. 33 (N. 33rd RD.) EARTHWORK TOTALS						
LOCATION	EARTH EXCAVATION	EARTH EXCAVATION ADJUSTED FOR SHRINKAGE 25%	EMBANKMENT	CHANNEL EXCAVATION	CHANNEL EXCAVATION ADJUSTED FOR SHRINKAGE 62.5%	EARTHWORK BALANCE WASTE (+) OR SHORTAGE (-)
	CU YD	CU YD	CU YD	CU YD	CU YD	CU YD
TOTAL	220	165	55	0	0	110

HMA MIXTURE REQUIREMENT TABLE		
LOCATIONS:	ENTIRE PROJECT	ENTIRE PROJECT
MIXTURE USE(S):	HMA BINDER	HMA SURFACE
BINDER GRADE (PG):	PG 64-22	PG 64-22
DESIGN AIR VOIDS:	4.0% @ N50	4.0% @ N50
MIXTURE COMPOSITION: (MIXTURE GRADATION)	IL 19.0	IL 9.5
FRICTION AGGREGATE:		MIXTURE C
MIXTURE WEIGHT:	112.0 LB/SY/IN	112.0 LB/SY/IN
QUALITY MANAGEMENT PROGRAM:	QCQA	QCQA
SUBLOT SIZE:	NA	NA
DENSITY TEST METHOD:	CORES/NUCLEAR	CORES/NUCLEAR

PRINT_ORGANIZER.BW.plt.ctb 3/15/2021 1:28:22 PM - PLOTTED

FILE = S:\PROJECTS\2019\1412019.LCH\DESIGN\CAD_SHEETS\1412019.Schedule of Quantities.dgn

REVISION	DATE	BY	REMARKS

DESIGNED	ATK
DRAWN	DAN
REVIEWED	MCW
APPROVED	MRL

LASALLE COUNTY
F.A.S. 1365 OVER PECUMSAUGAN CREEK
STATION 20+00



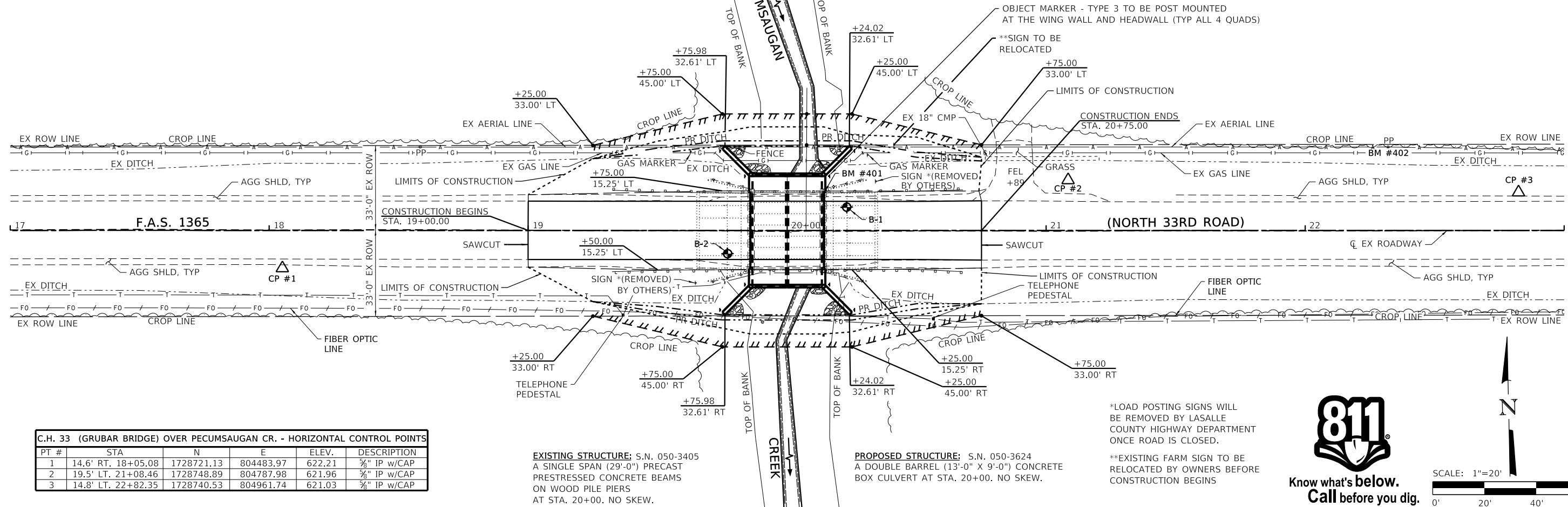
WILLET HOFMANN & ASSOCIATES INC.
 ENGINEERING ARCHITECTURE LAND SURVEYING
 809 EAST 2ND STREET, DIXON, IL 61021-0367
 T: 815-284-3381 DESIGN FIRM: #184-000918

SCHEDULE OF QUANTITIES
SHEET NO. 1 OF 1 SHEETS

F.A.S. RTE.	SECTION	COUNTY	TOTAL SHEETS	SHEET NO.
1365	18-00807-00-DR	LASALLE	19	4
WHA# 1412019		CONTRACT NO. 87743		
ILLINOIS FED. AID PROJECT				

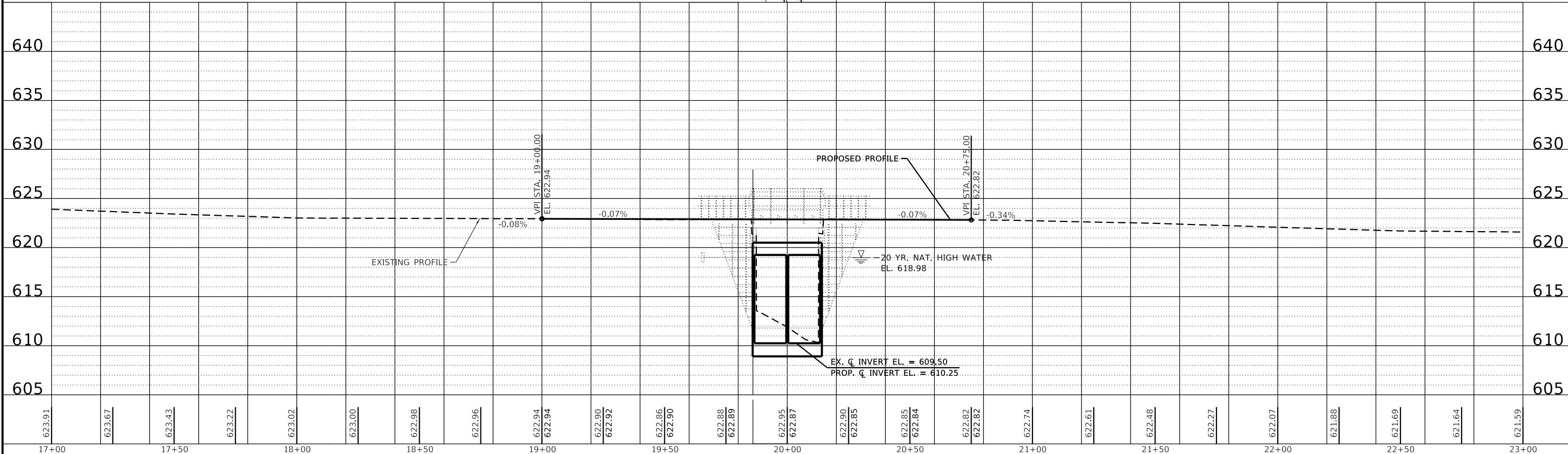
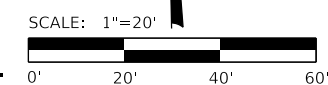
This document is the copyrighted property of Willett-Hofmann & Associates, Inc., and may not be copied or used by any person without written permission. © Copyright 2019 Willett-Hofmann & Associates, Inc.

BENCH MARK #401: CHSLD "□" ON NE GUARDRAIL HUB GUARD OF STRUCTURE 15' LT. OF STA. 20+14, ELEV. 623.28
BENCH MARK #402: RR SPK IN 1ST PP E. OF STRUCTURE 32' LT. OF STA. 22+32 ELEV. 621.08



C.H. 33 (GRUBAR BRIDGE) OVER PECUMSAUGAN CR. - HORIZONTAL CONTROL POINTS

PT #	STA	N	E	ELEV.	DESCRIPTION
1	14.6' RT. 18+05.08	1728721.13	804483.97	622.21	3/4" IP w/CAP
2	19.5' LT. 21+08.46	1728748.89	804787.98	621.96	3/4" IP w/CAP
3	14.8' LT. 22+82.35	1728740.53	804961.74	621.03	3/4" IP w/CAP



REVISION	DATE	BY	REMARKS

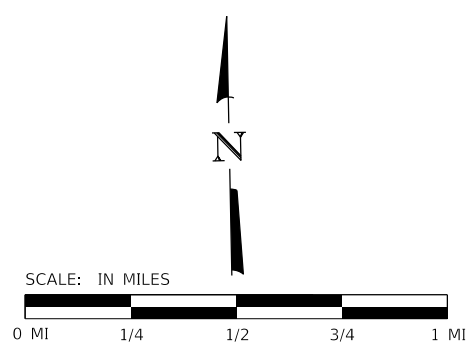
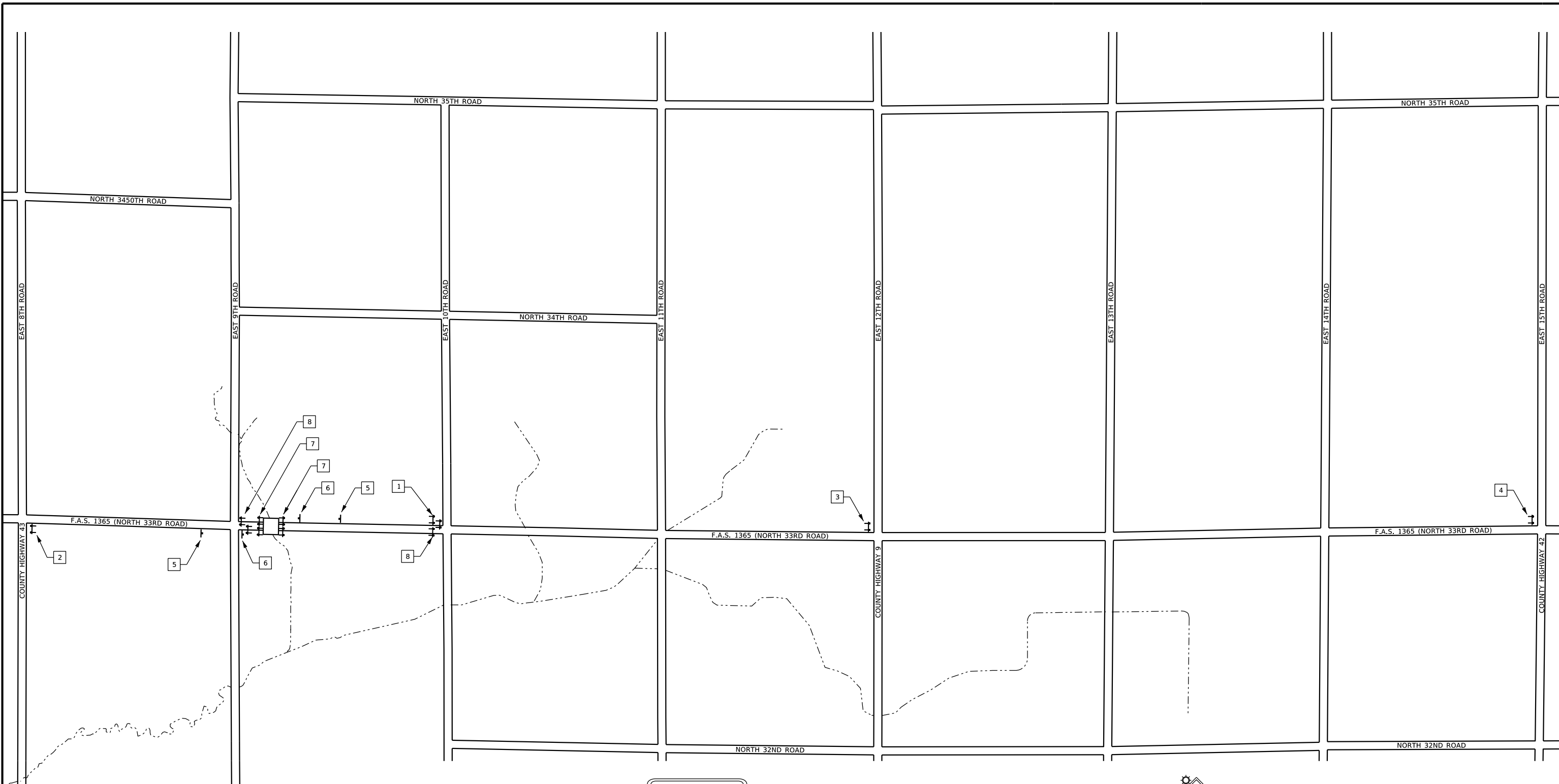
DESIGNED	ATK
DRAWN	DAN
REVIEWED	MCW
APPROVED	MRL

LASALLE COUNTY	
F.A.S. 1365 OVER PECUMSAUGAN CREEK	
STATION 20+00	

WILLETT HOFMANN & ASSOCIATES INC	
ENGINEERING ARCHITECTURE LAND SURVEYING	
809 EAST 2ND STREET, DIXON, IL 61021-0367	
T: 815-284-3381 DESIGN FIRM: #184-000918	

PLAN AND PROFILE	
SCALE: 1" = 20'-0"	SHEET NO. 1 OF 1 SHEETS
STA. 17+00.00 TO STA. 23+00.00	

F.A.S. RTE.	SECTION	COUNTY	TOTAL SHEETS	SHEET NO.
1365	18-00807-00-DR	LASALLE	19	5
WHA# 1412D19		CONTRACT NO. 87743		
ILLINOIS FED. AID PROJECT				



SEE STANDARD B.L.R. 21-9 AND SPECIAL PROVISIONS FOR ROAD CLOSURE AND SIGN PLACEMENT

- 1 ROAD CLOSED 1 MILES AHEAD LOCAL TRAFFIC ONLY R11-3a, 60" X 30"
- 2 ROAD CLOSED 1 1/4 MILES AHEAD LOCAL TRAFFIC ONLY R11-3a, 60" X 30"
- 3 ROAD CLOSED 2 1/2 MILES AHEAD LOCAL TRAFFIC ONLY R11-3a, 60" X 30"
- 4 ROAD CLOSED 6 MILES AHEAD LOCAL TRAFFIC ONLY R11-3a, 60" X 30"
- 5 ROAD CLOSED AHEAD W20-3, 48" X 48" WITH AMBER FLASHING LIGHTS AND FLAG.
- 6 ROAD CLOSED 500 FT W20-3, 48" X 48" WITH AMBER FLASHING LIGHTS AND FLAG.
- 7 TYPE III BARRICADES
- 8 TYPE III BARRICADES (STAGGERED)

REVISION	DATE	BY	REMARKS

DESIGNED	GBG
DRAWN	GBG
REVIEWED	GFS
APPROVED	MRL

LASALLE COUNTY
F.A.S. 1365 OVER PECUMSAUGAN CREEK
STATION 20+00



TRAFFIC CONTROL PLAN

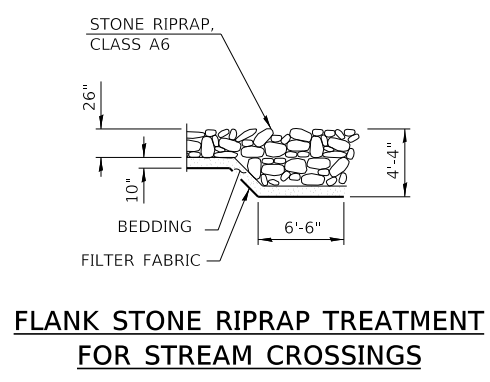
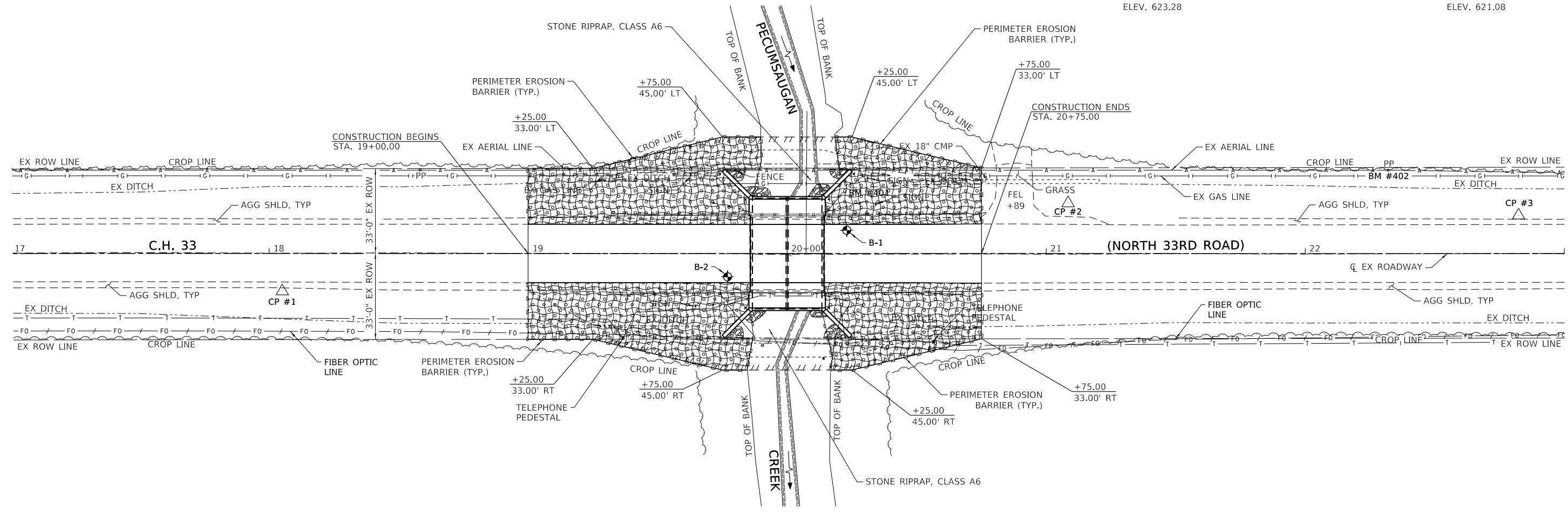
SHEET NO. 1 OF 1 SHEETS

F.A.S. RTE.	SECTION	COUNTY	TOTAL SHEETS	SHEET NO.
1365	18-00807-00-DR	LASALLE	19	6
WHA# 1412D19		CONTRACT NO. 87743		
ILLINOIS FED. AID PROJECT				


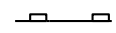
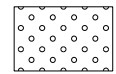

HALFSIZE-BW.plt.ctb 3/12/2021 4:07:30 PM - PLOTTED

S:\PROJECTS\2019\1412D19.L\CH\DESIGN\CAD_SHEETS\1412D19_Erosion_Control_Plan_7-8.dgn

BENCH MARK #401: CHSLD "□" ON NE GUARDRAIL HUB GUARD OF STRUCTURE 15' LT. OF STA. 20+14, ELEV. 623.28
BENCH MARK #402: RR SPK IN 1ST PP E. OF STRUCTURE 32' LT. OF STA. 22+32 ELEV. 621.08



LEGEND

-  EROSION CONTROL BLANKET
-  PERIMETER EROSION BARRIER
-  SEEDING (COMPLETE)
-  STONE RIPRAP, CLASS A6

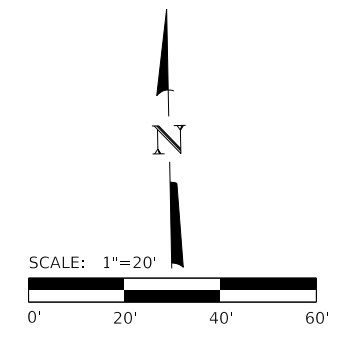
BILL OF MATERIAL

ITEM	UNIT	QUANTITY
PERIMETER EROSION BARRIER	FOOT	467
SEEDING (COMPLETE)	SQ. YD.	792
STONE RIPRAP, CLASS A6	SQ. YD.	92
FILTER FABRIC	SQ. YD.	92

ALL COSTS ASSOCIATED WITH EROSION CONTROL BLANKET WILL BE COVERED BY SEEDING (COMPLETE). SEE SPECIAL PROVISIONS.



Know what's below.
Call before you dig.



REVISION	DATE	BY	REMARKS

DESIGNED	ATK
DRAWN	DAN
REVIEWED	MCW
APPROVED	MRL

LASALLE COUNTY
F.A.S. 1365 OVER PECUMSAUGAN CREEK
STATION 20+00

WILLET HOFMANN & ASSOCIATES INC
 ENGINEERING ARCHITECTURE LAND SURVEYING
 809 EAST 2ND STREET, DIXON, IL 61021-0167
 T: 315-284-3381 DESIGN FIRM: #184-000118

EROSION CONTROL PLAN
SHEET NO. 1 OF 2 SHEETS

F.A.S. RTE. 1365	SECTION 18-00807-00-DR	COUNTY LASALLE	TOTAL SHEETS 19	SHEET NO. 7
WHA# 1412D19		CONTRACT NO. 87743		
ILLINOIS FED. AID PROJECT				

This document is the copyrighted property of Willett, Hofmann & Associates, Inc., and may not be copied or used by any person without written permission. © Copyright 2019 Willett, Hofmann & Associates, Inc.

STORM WATER POLLUTION PREVENTION PLAN EROSION CONTROL PLAN

THE FOLLOWING PLAN WAS ESTABLISHED AND INCLUDED IN THESE PLANS TO DIRECT THE CONTRACTOR IN THE PLACEMENT OF TEMPORARY EROSION CONTROL SYSTEMS AND TO PROVIDE A STORM WATER POLLUTION PREVENTION PLAN FOR COMPLIANCE UNDER NPDES.

THE PURPOSE OF THIS PLAN IS TO MINIMIZE SILTATION WITHIN THE CONSTRUCTION ZONE AND TO ELIMINATE SEDIMENTS FROM ENTERING AND LEAVING THE CONSTRUCTION ZONE BY UTILIZING PROPER TEMPORARY EROSION CONTROL SYSTEMS AND PROVIDING GROUND COVER WITHIN A REASONABLE AMOUNT OF TIME.

THE CONTRACTOR SHALL PLACE INLET AND PIPE PROTECTION WITHIN A REASONABLE AMOUNT OF TIME; THEREFORE, REDUCING THE AMOUNT OF SILT ENTERING THE STORM SEWER SYSTEM. THE RESIDENT ENGINEER WILL DETERMINE IF TEMPORARY EROSION CONTROL SYSTEMS SHOWN IN THE PLAN CAN BE DELETED, THE PROPER METHOD OF INSTALLATION, AND IF ANY ADDITIONAL TEMPORARY EROSION CONTROL SYSTEMS SHALL BE ADDED WHICH ARE NOT INCLUDED IN THE PLANS. THE CONTRACTOR SHALL PERFORM ALL WORK AS DIRECTED BY THE ENGINEER AND AS SHOWN IN STANDARD 280001 OF THE PLANS.

SITE DESCRIPTION

DESCRIPTION OF CONSTRUCTION ACTIVITY: CONSTRUCTION OF A NEW CULVERT AT F.A.S. 1365 (N. 33RD ROAD) OVER PECUMSAUGAN CREEK IN WALTHAM TOWNSHIP, LASALLE COUNTY, IL.

THIS PROJECT CONSISTS OF EARTH EXCAVATION, REMOVAL AND REPLACEMENT OF THE EXISTING BRIDGE WITH A NEW CULVERT, VARIOUS PAVEMENT ITEMS, AND OTHER MISCELLANEOUS ITEMS OF CONSTRUCTION.

DESCRIPTION OF INTENDED SEQUENCE OF ACTIVITIES PER STAGE:

THE SEQUENCE OF EVENTS ARE AS FOLLOW:
REMOVAL OF THE EXISTING BRIDGE, EARTH EXCAVATION, CONSTRUCTION OF A NEW CULVERT, SEEDING OF THE SITE.

TOTAL CONSTRUCTION SITE (CONSTRUCTION LIMIT TO CONSTRUCTION LIMIT) 0.27 ACRES

SUPPORTING REPORTS AND PLANS

THE FOLLOWING ASSISTED IN DEVELOPING THE EROSION CONTROL PLAN AS REFERENCED DOCUMENTS:

USGS DRAINAGE MAPS, PROJECT PLAN DOCUMENTS

DRAINAGE TRIBUTARIES RECEIVING WATER FROM CONSTRUCTION SITE:
PECUMSAUGAN CREEK

EROSION CONTROLS AND SEDIMENT CONTROL PROCEDURES
STABILIZATION PRACTICES AT THE BEGINNING OF CONSTRUCTION:
N/A

STABILIZATION PRACTICES DURING CONSTRUCTION:

- (a) WITHIN THE CONSTRUCTION LIMITS, AREAS WHICH MAY BE SUSCEPTIBLE TO EROSION AS DETERMINED BY THE ENGINEER SHALL REMAIN UNDISTURBED UNTIL FULL SCALE CONSTRUCTION IS UNDERWAY TO PREVENT UNNECESSARY SOIL EROSION.
- (b) EARTH STOCKPILES SHALL BE TEMPORARILY SEEDDED IF THEY ARE TO REMAIN UNUSED FOR MORE THAN FOURTEEN DAYS. COST OF SEEDING SHALL BE THE RESPONSIBILITY OF THE CONTRACTOR.
- (c) AS CONSTRUCTION PROCEEDS, THE CONTRACTOR SHALL INSTITUTE THE FOLLOWING AS DIRECTED BY THE ENGINEER:
 - I. TEMPORARILY SEED ERODABLE BARE EARTH ON A WEEKLY BASIS TO MINIMIZE THE AMOUNT OF ERODABLE SURFACE AREA WITHIN THE CONTRACT LIMITS.
- (d) CONSTRUCTION EQUIPMENT SHALL BE STORED AND FUELED ONLY AT DESIGNED LOCATIONS. ALL NECESSARY MEASURES SHALL BE TAKEN TO CONTAIN ANY FUEL OR OTHER POLLUTANT IN ACCORDANCE WITH EPA WATER QUALITY REGULATIONS. LEAKING EQUIPMENT OR SUPPLIES SHALL BE IMMEDIATELY REPAIRED OR REMOVED FROM THE SITE.
- (e) THE RESIDENT ENGINEER SHALL INSPECT THE PROJECT DAILY DURING CONSTRUCTION ACTIVITIES. INSPECTION SHALL ALSO BE DONE WEEKLY AND AFTER RAINS OF ½ INCH OR GREATER OR EQUIVALENT SNOWFALL AND DURING THE WINTER SHUTDOWN PERIOD. THE PROJECT SHALL ADDITIONALLY BE INSPECTED BY THE CONSTRUCTION FIELD ENGINEER ON A BI-WEEKLY BASIS TO DETERMINE THAT EROSION CONTROL EFFORTS ARE IN PLACE AND EFFECTIVE AND IF OTHER EROSION CONTROL WORK IS NECESSARY.
- (f) SEDIMENT COLLECTED DURING CONSTRUCTION OF THE VARIOUS TEMPORARY EROSION CONTROL SYSTEMS SHALL BE DISPOSED OF ON THE SITE ON A REGULAR BASIS AS DIRECTED BY THE ENGINEER. THE COST OF THIS MAINTENANCE SHALL BE INCLUDED IN THE UNIT BID PRICE FOR EARTH EXCAVATION.

REVISION	DATE	BY	REMARKS

DESIGNED	ATK
DRAWN	DAN
REVIEWED	MCW
APPROVED	MRL

LASALLE COUNTY
F.A.S. 1365 OVER PECUMSAUGAN CREEK
STATION 20+00



WILLET HOFMANN & ASSOCIATES INC
ENGINEERING ARCHITECTURE LAND SURVEYING
809 EAST 2ND STREET, DIXON, IL 61021-0367
T: 815-284-3381 DESIGN FIRM: #184-000918

EROSION CONTROL PLAN

SHEET NO. 2 OF 2 SHEETS

F.A.S. RTE.	SECTION	COUNTY	TOTAL SHEETS	SHEET NO.
1365	18-00807-00-DR	LASALLE	19	8
WHA# 1412D19		CONTRACT NO. 87743		
ILLINOIS FED. AID PROJECT				

PRINT_ORGANIZER-BW.plt.ctb 2/17/2021 2:56:45 PM - PLOTTED

Existing Structure: S.N. 050-3405 A single span (29'-0") precast prestressed concrete beams on wood pile piers at Sta. 20+00. No skew.

Bench Mark : #401 Chisled "C" on N.E. Hub guard of existing structure. 14.96' Lt. of Sta. 20+14.47. Elev. 623.28

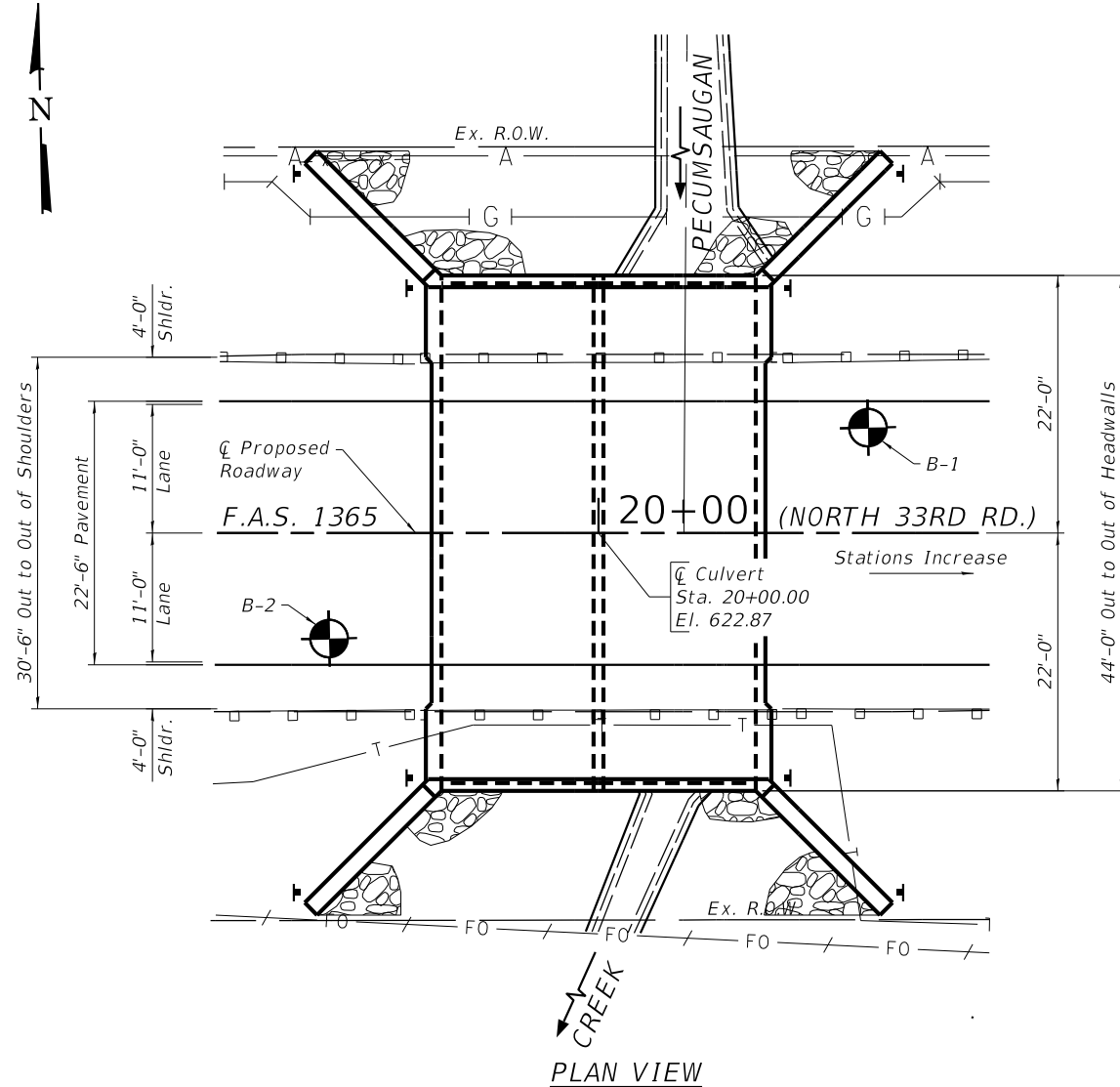
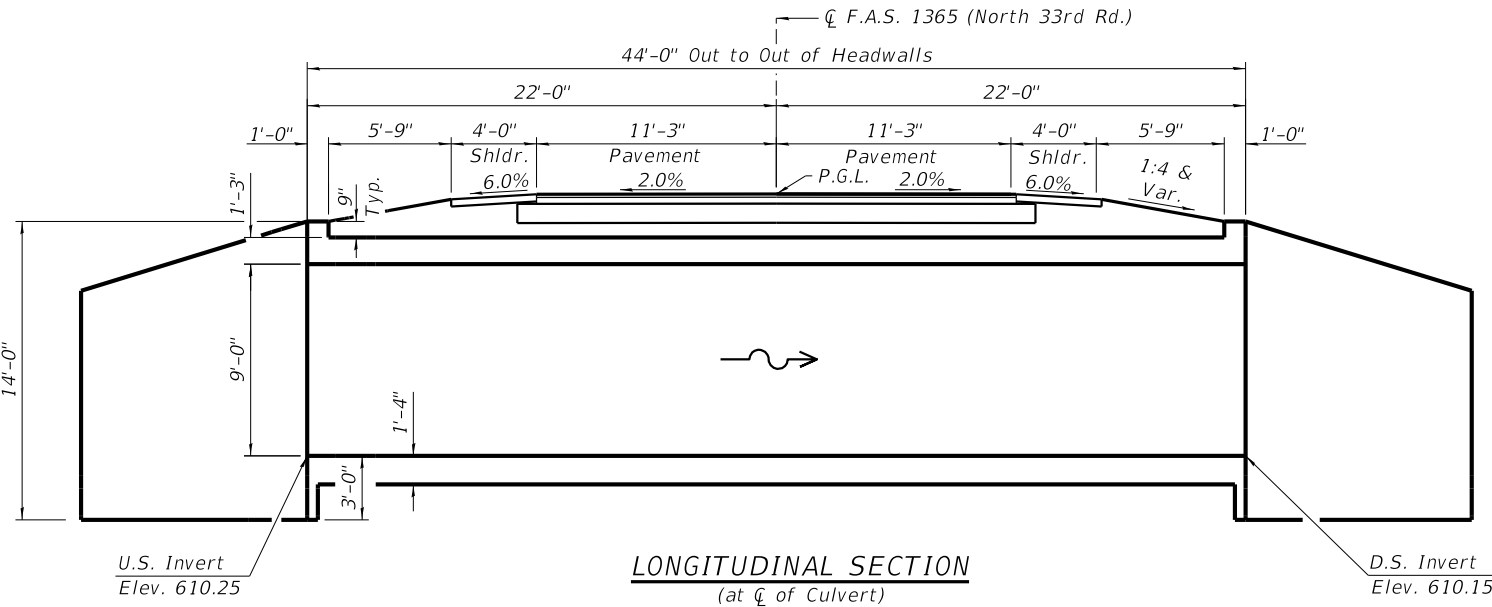
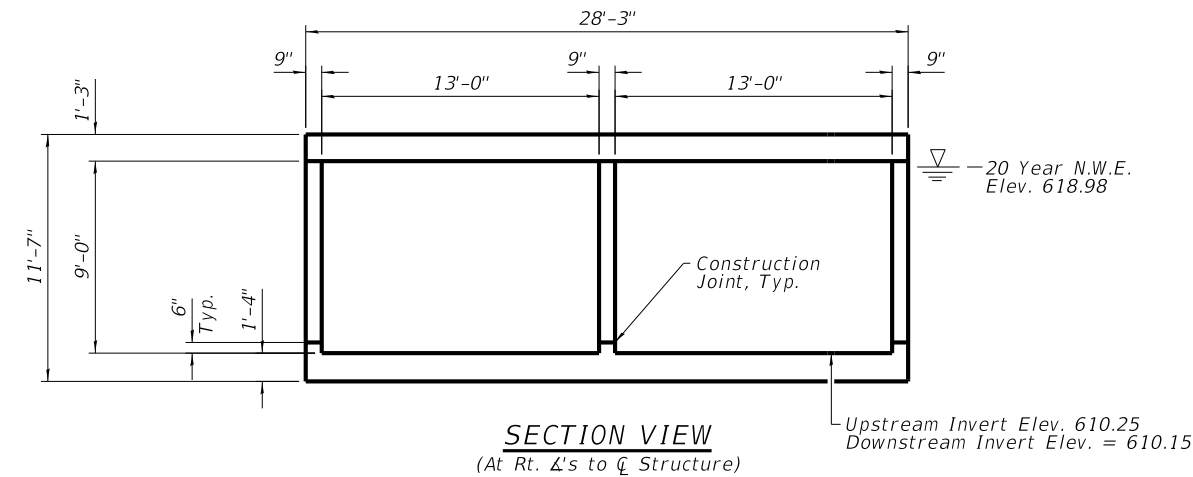
No Salvage.

PECUMSAUGAN CREEK
BUILT 2021BY
LASALLE COUNTY
SECTION 18-00807-00-DR
F.A.S.1365 STATION 20+00
STR. NO. 050-3624 LOADING HL-93

INDEX OF STRUCTURAL SHEETS

- 1 General Plan and Elevation
- 2-3 Double Barrel Box Culvert Details
- 4-6 Boring Logs

NAME PLATE LETTERING
Refer To Std. 51500



HIGHWAY CLASSIFICATION

C.H. 33 (Grubar Bridge)
Functional Class: Major Collector
ADT: 601 (2020) ; 602 (2040)
ADTT: 66 (2020) ; 66 (2040)
DHV: 60
Design Speed: 50 m.p.h.
Posted Speed: 55 m.p.h.
2-Way Traffic
Directional Distribution: 50:50

DESIGN SPECIFICATIONS

2020 AASHTO LRFD Bridge Design Specifications, 9th Edition

DESIGN STRESSES

FIELD UNITS
f'c = 3,500 psi
fy = 60,000 psi (Reinforcement)

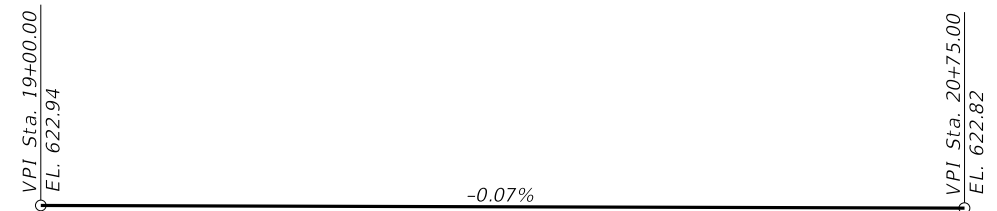
LOADING HL-93

Allow 50#/sq. ft. for future wearing surface.



DATE: 2/17/21
EXPIRES 11/30/22

"I CERTIFY THAT TO THE BEST OF MY KNOWLEDGE, INFORMATION AND BELIEF, THIS CULVERT DESIGN IS STRUCTURALLY ADEQUATE FOR THE DESIGN LOADING SHOWN ON THE PLANS, THE DESIGN IS AN ECONOMICAL ONE COMPLIES WITH REQUIREMENTS OF THE CURRENT 'AASHTO STANDARD SPECIFICATIONS FOR HIGHWAY BRIDGES'."

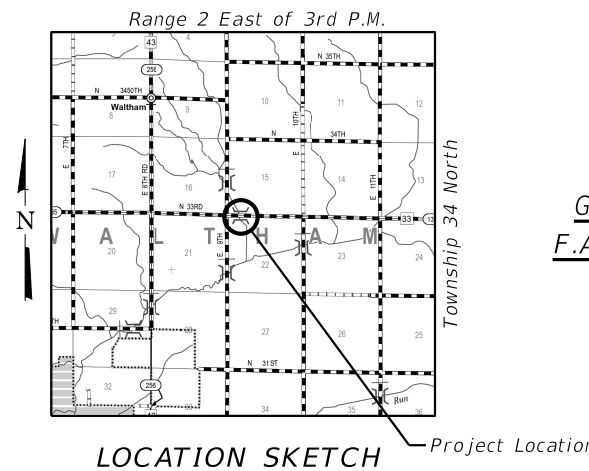


PROFILE GRADE

Along Roadway C

WATERWAY INFORMATION

		Drainage Area = 4.31 Sq. Mi.		Low Grade El. 621.54 @ Sta. 23+50					
Flood	Freq. Yr.	Q C.F.S.	Opening Sq. Ft.	Nat. H.W.E.	Head - Ft. Exist.	Head - Ft. Prop.	Headwater El. Exist.	Headwater El. Prop.	
Design	20	1320	188	227	618.98	0.93	0.85	619.91	619.83
Base	100	1990	200	234	619.48	1.81	1.81	621.29	621.29
Scour Check	200	2314	206	234	619.69	2.38	2.22	622.07	621.91
Max. Calc	500	2770	213	234	620.00	3.37	2.31	623.37	622.31



GENERAL PLAN AND ELEVATION
F.A.S. 1365 (North 33rd Rd.) OVER
PECUMSAUGAN CREEK
SEC. 18-00807-00-DR
PROPOSED S.N. 050-3624
LASALLE COUNTY
STATION 20+00.00

FILE = S:\PROJECTS\2019\1412019.LCH\DESIGN\CAD-SHEETS\1412019.General Plan & Elevation.9.dgn

REVISION	DATE	BY	REMARKS

DESIGNED ATK
DRAWN DAN
REVIEWED MCW
APPROVED MRL

LASALLE COUNTY
F.A.S. 1365 OVER PECUMSAUGAN CREEK
STATION 20+00

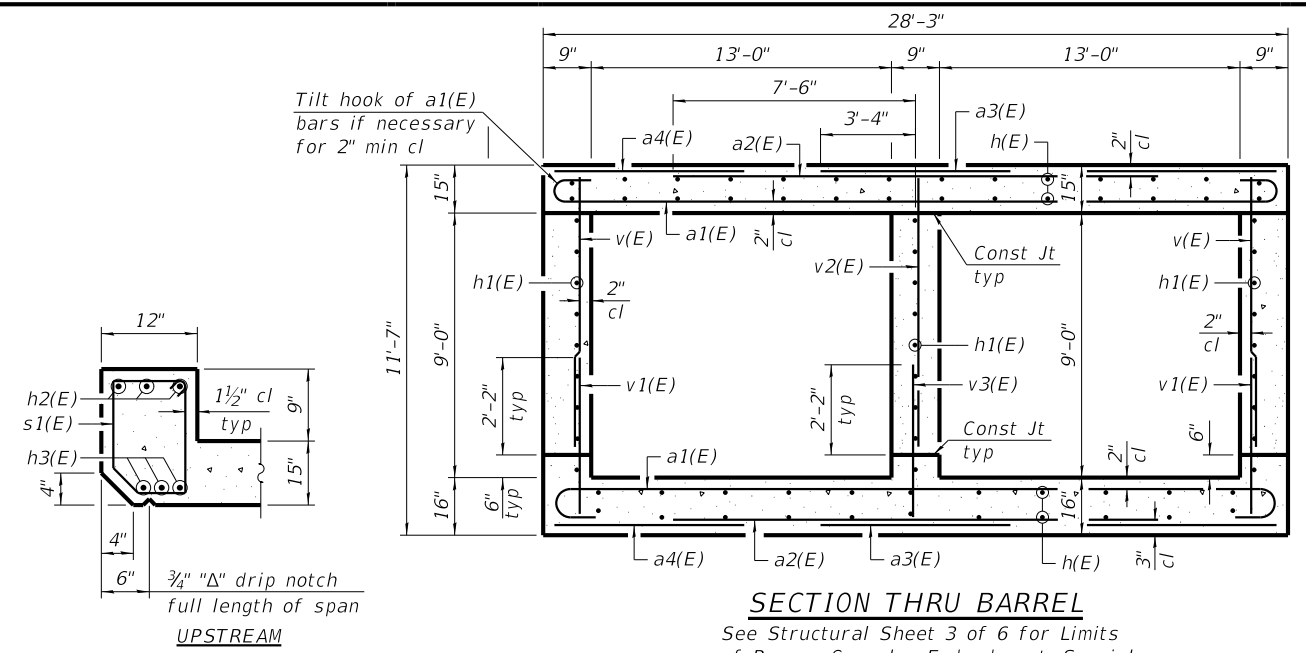
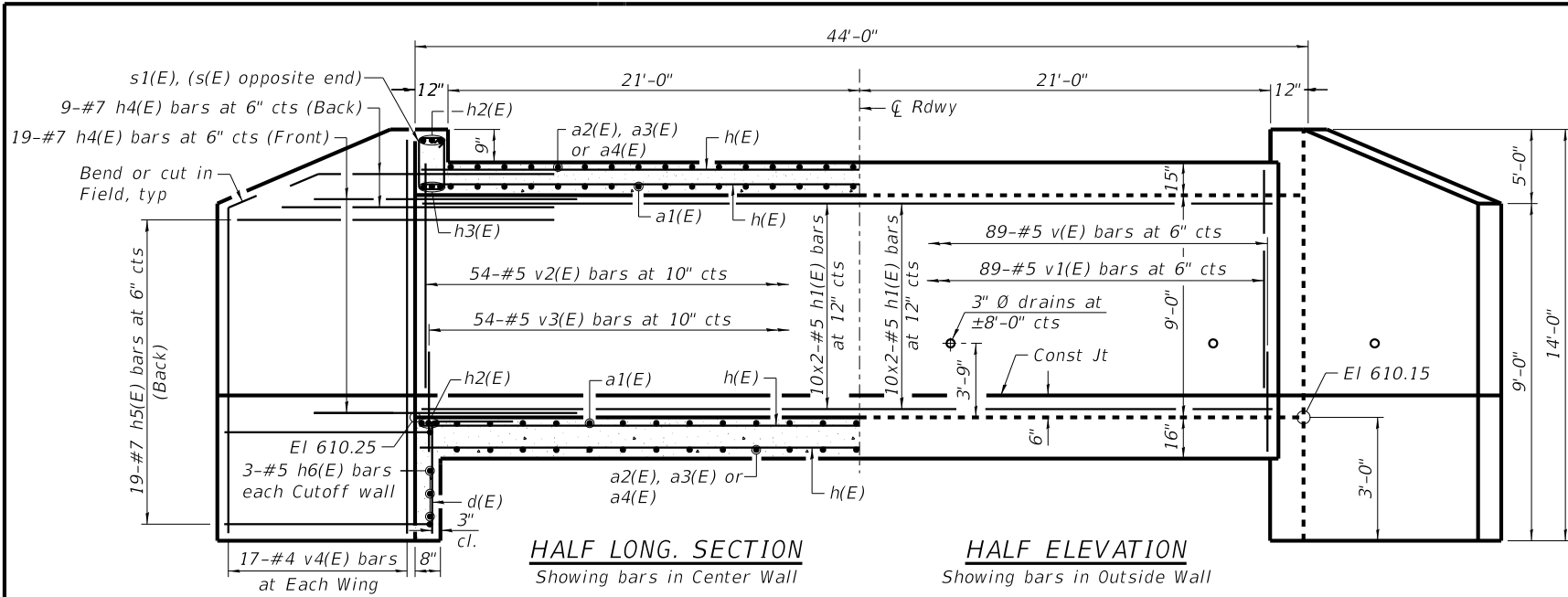
WILLET HOFMANN & ASSOCIATES INC
ENGINEERING ARCHITECTURE LAND SURVEYING
809 EAST 2ND STREET, DIXON, IL 61021-0367
T: 815-284-3381 DESIGN FIRM: #184-000918

STRUCTURAL SHEET NO. 1 OF 6 SHEETS

F.A.S. RTE.	SECTION	COUNTY	TOTAL SHEETS	SHEET NO.
1365	18-00807-00-DR	LASALLE	19	9

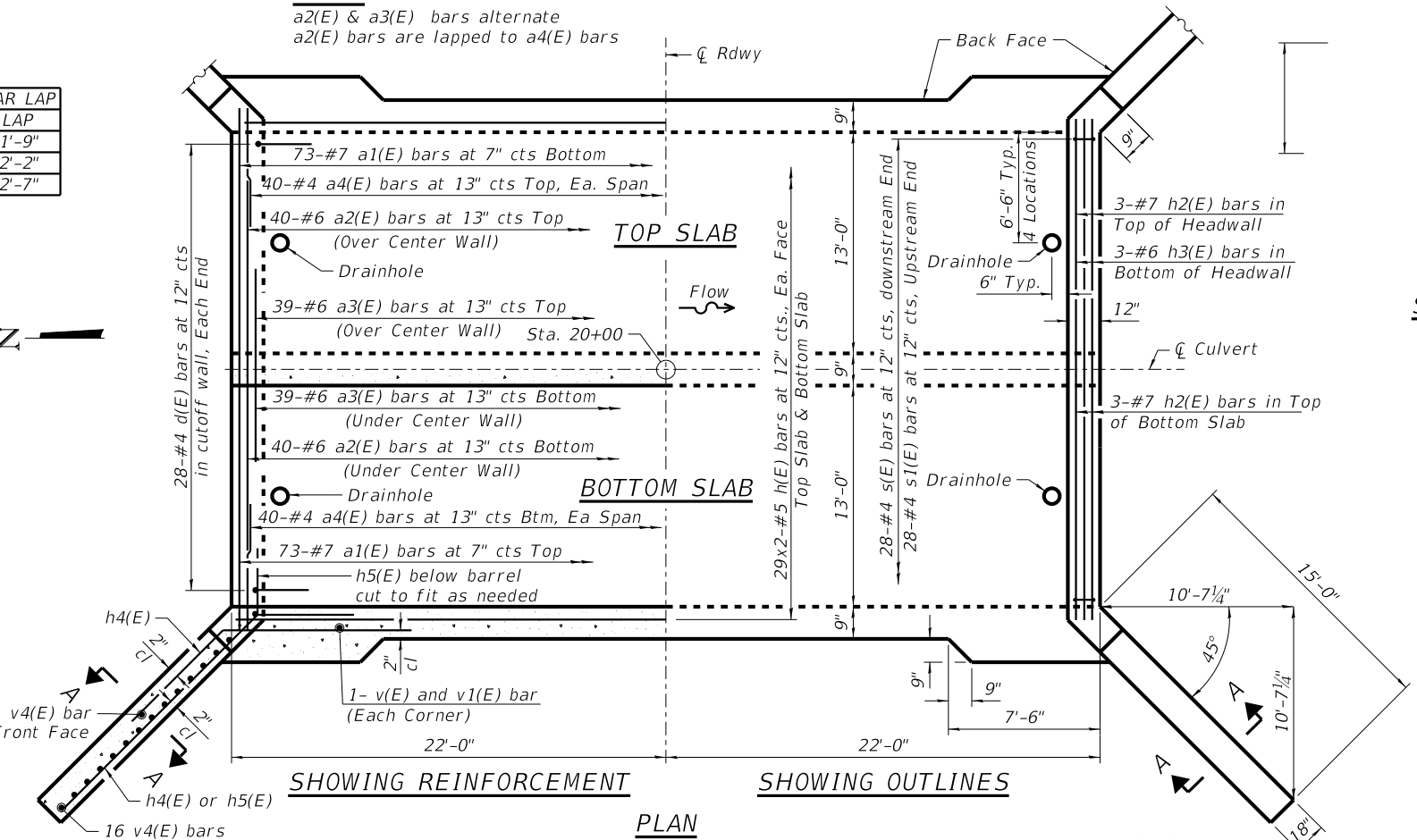
WHA# 1412019 CONTRACT NO. 87743
ILLINOIS FED. AID PROJECT

This document is the copyrighted property of Willett, Hofmann & Associates, Inc., and may not be copied or used by any person without written permission. © Copyright 2019 Willett, Hofmann & Associates, Inc.



NOTE:
a2(E) & a3(E) bars alternate
a2(E) bars are lapped to a4(E) bars

SIZE	LAP
#4	1'-9"
#5	2'-2"
#6	2'-7"

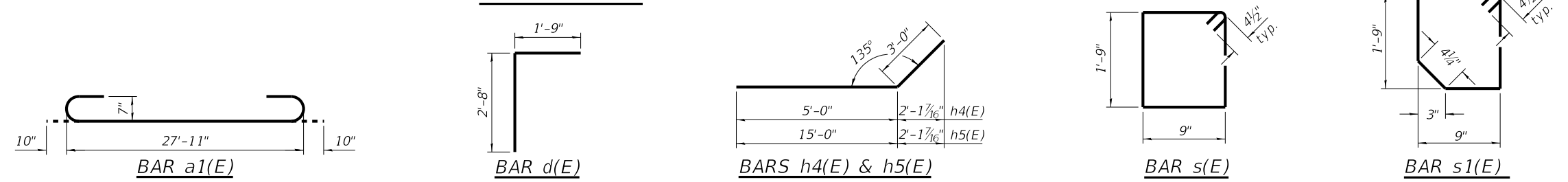


BILL OF MATERIAL

Bar	No.	Size	Length	Shape
a1(E)	146	#7	29'-7"	U
a2(E)	80	#6	15'-0"	—
a3(E)	78	#6	6'-8"	—
a4(E)	80	#4	9'-1"	—
d(E)	56	#4	4'-5"	L
h(E)	232	#5	23'-1"	—
h1(E)	60	#5	23'-1"	—
h2(E)	12	#7	27'-11"	—
h3(E)	6	#6	27'-11"	—
h4(E)	112	#7	8'-0"	—
h5(E)	76	#7	18'-0"	—
h6(E)	6	#5	27'-11"	—
s(E)	28	#4	5'-9"	□
s1(E)	28	#4	5'-7"	□
v(E)	182	#5	9'-7"	—
v1(E)	182	#5	3'-10"	—
v2(E)	54	#5	9'-7"	—
v3(E)	54	#5	3'-10"	—
v4(E)	68	#4	13'-8"	—
Aggregate Base Course, Type B		Ton	90	
Reinforcement Bars, Epoxy Coated		Pound	28,970	
Concrete Box Culverts		Cu Yd	202.0	
*Porous Granular Embankment, Special		Cu Yd	434	
Membrane Waterproofing system for buried Structures		Sq Yd	155	
Geocomposite Wall Drain		Sq Yd	155	
Name Plate		Ea	1	

*See Special Provisions

Notes:
A distance of half the length of the wingwall but not less than six feet of the barrel shall be poured monolithically with the wingwalls.
Bars indicated thus 12 x 4-#5 etc. indicates 12 lines of bars with 4 lengths per line.
All exposed edges shall be chamfered 3#4" unless otherwise noted.
Precast option is not allowed.
Reinforcement bars shall conform to the requirements of ASTM a 706 gr 60.



REVISION	DATE	BY	REMARKS

DESIGNED	ESG
DRAWN	DAN
REVIEWED	MRL
APPROVED	MRL

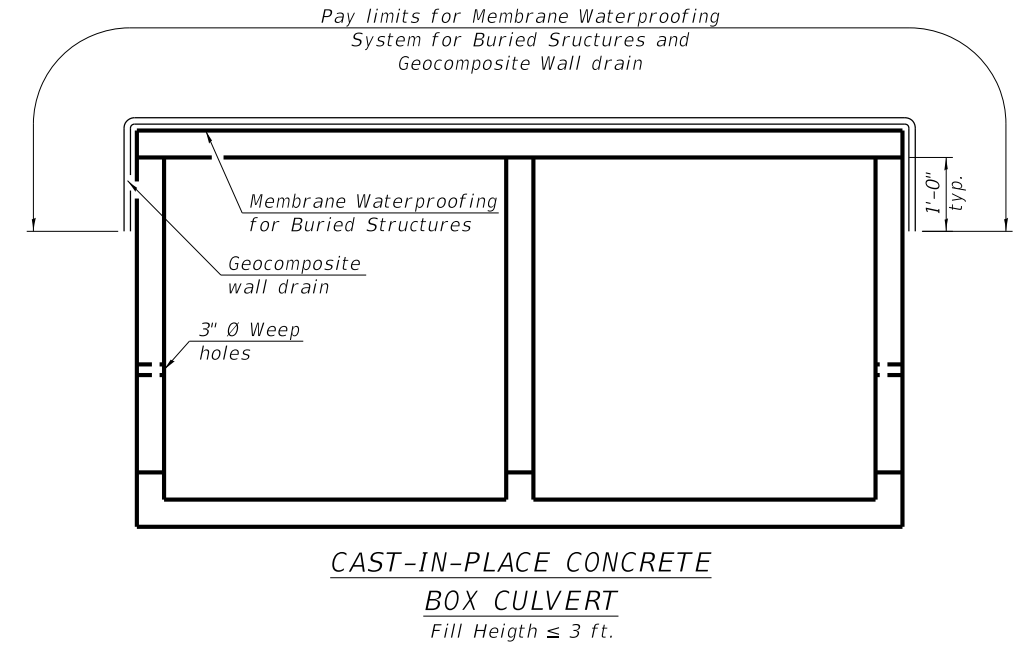
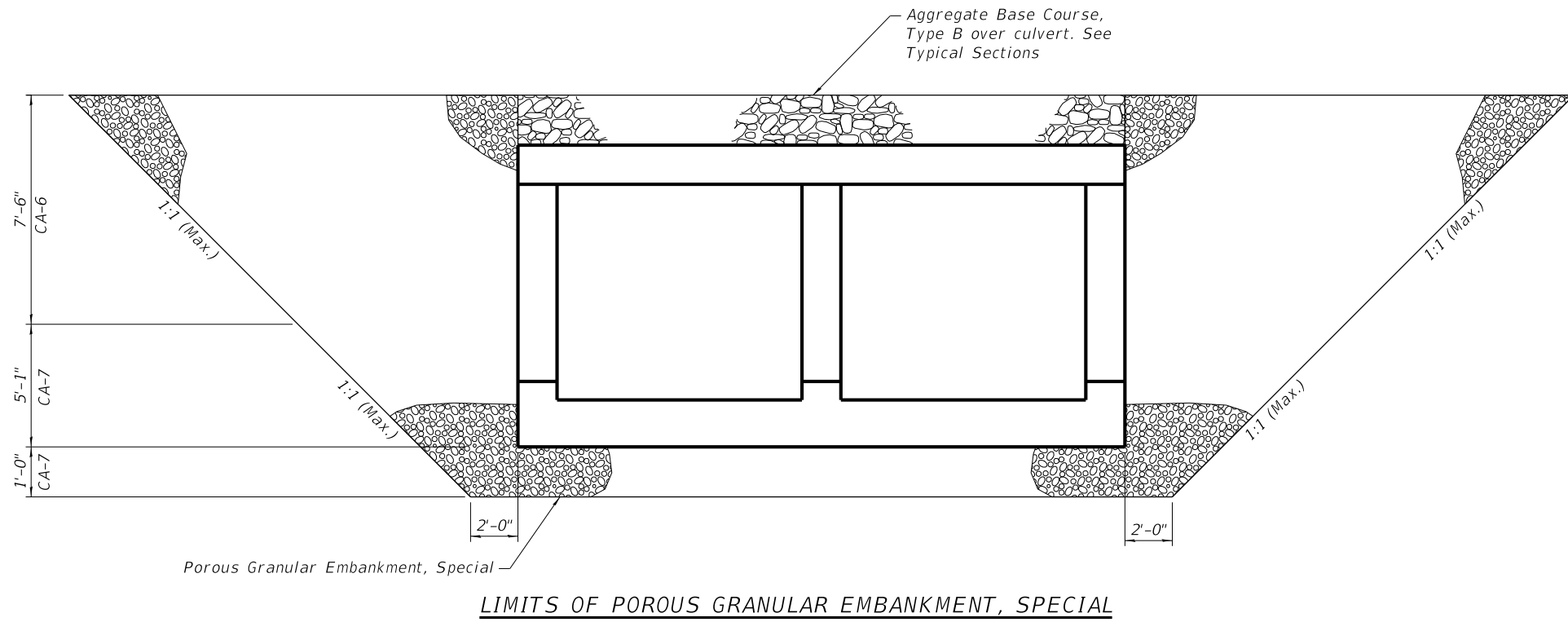
LASALLE COUNTY
F.A.S. 1365 OVER PECUMSAUGAN CREEK
STATION 20+00



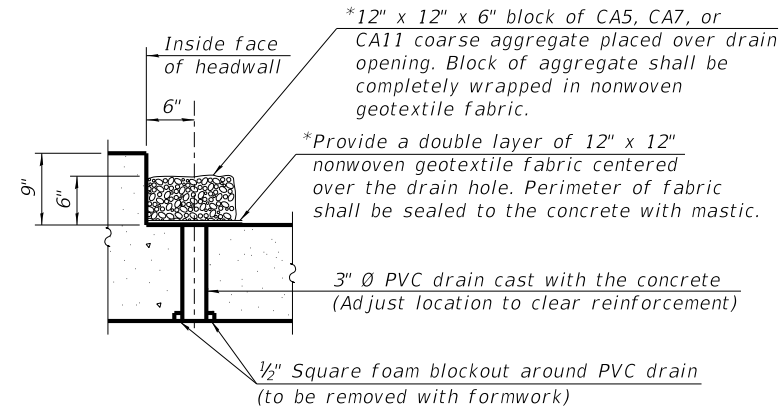
DOUBLE BARREL BOX CULVERT DETAILS
STRUCTURAL SHEET NO. 2 OF 6 SHEETS

F.A.S. RTE.	SECTION	COUNTY	TOTAL SHEETS	SHEET NO.
1365	18-00807-00-DR	LASALLE	19	10
	WHA# 1412D19		CONTRACT NO. 87743	

ILLINOIS FED. AID PROJECT



Note:
Geocomposite Wall drain shall be accord(E)ing Section 591 of the Standard Specifications, except that concrete nails shall not be used in areas where it overlaps Membrane Waterproofing System for Buried Structures.



*Nonwoven geotextile fabric shall conform to the requirements of Article 1080.01 of the Standard Specifications. The minimum weight of the fabric shall be 6 ounces per square yard.

DRAIN DETAIL

(All costs associated with furnishing and constructing the above drain detail will not be measured for payment but shall be included in the contract unit price for the associated work.)

REVISION	DATE	BY	REMARKS

DESIGNED	ESG
DRAWN	DAN
REVIEWED	MRL
APPROVED	MRL

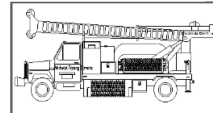
LASALLE COUNTY
F.A.S. 1365 OVER PECUMSAUGAN CREEK
STATION 20+00



DOUBLE BARREL BOX CULVERT DETAILS

STRUCTURAL SHEET NO. 3 OF 6 SHEETS

F.A.S. RTE.	SECTION	COUNTY	TOTAL SHEETS	SHEET NO.
1365	18-00807-00-DR	LASALLE	19	11
WHA# 1412019		CONTRACT NO. 87743		
ILLINOIS FED. AID PROJECT				



Midwest Testing Services, Inc.
3705 Progress Blvd.
Peru, IL 61354

BORING LOG

Sheet 1 of 3

Phone: 815-223-6696
Fax: 815-223-6659
e-mail: mts37@comcast.net

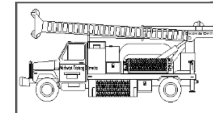
Client: Willet, Hofmann & Associates
Project Name: CH 33 Over Pecumsaugem Creek
Project Site: Waltham Township, LaSalle County, Illinois

Boring No. B-1
Surface Elev. 622.80
Auger Depth 51' Rotary Depth NA
Start Date 06/13/20 Finish Date 06/13/20

Location: 9' Left of Station 20+23

(DEPTH) *ELEV.	DESCRIPTION OF MATERIALS	Graphic Log	Depth in feet	SAMPLES						DRILLED BY	REMARKS
				Sample No.	Sample Type	Qu (TSF)	N Value (Blows)	Bulge / Shear	Moisture (%)		
622.80										Randy Safranski Diedrich D-120	
621.80	Stiff Brown Gravelly Clay (Fill)		1								
620.80			2								
619.80	Stiff Black Clay		3	1	SS	1.3	7	S	16		
618.80			4								
617.80	Stiff Brownish Gray Clay		5	2	SS	1.2	5	B	22		
616.80			6								
615.80	Stiff Brownish Gray Clay		7								
614.80			8	3	SS	1.6	6	B	22		
613.80	Stiff Brownish Gray Clay Till		9								
612.80			10	4	SS	1.6	5	B	22		
611.80	Stiff Brownish Gray Clay Till		11								
610.80			12								
609.80	Very Stiff Gray Till		13	5	SS	1.8	7	B	19		
608.80			14								
607.80	Very Stiff Gray Till		15	6	SS	2.2	8	B	14		
606.80			16								
605.80	Very Stiff Gray Till		17								
604.80			18	7	SS	2.4	8	B	14		
603.80	Very Stiff Gray Till		19								
602.80			20	8	SS	2.9	9	B	13		

Groundwater Data: Static water level after auger removal - Elevation 608.5.
Comments:



Midwest Testing Services, Inc.
3705 Progress Blvd.
Peru, IL 61354

BORING LOG

Sheet 2 of 3

Phone: 815-223-6696
Fax: 815-223-6659
e-mail: mts37@comcast.net

Client: Willet, Hofmann & Associates
Project Name: CH 33 Over Pecumsaugem Creek
Project Site: Waltham Township, LaSalle County, Illinois

Boring No. B-1
Surface Elev. 622.80
Auger Depth 51' Rotary Depth NA
Start Date 06/13/20 Finish Date 06/13/20

Location: 9' Left of Station 20+23

(DEPTH) ELEV.	DESCRIPTION OF MATERIALS	Graphic Log	Depth in feet	SAMPLES						DRILLED BY	REMARKS
				Sample No.	Sample Type	Qu (TSF)	N Value (Blows)	Bulge / Shear	Moisture (%)		
601.80										Randy Safranski Diedrich D-120	
600.80	Medium Gray Fine To Coarse Sand		22								
599.80			23	9	SS	---	13	---	---		
598.80	Medium Gray Fine To Coarse Sand		24								
597.80			25	10	SS	---	15	---	---		
596.80	Medium To Dense Gray Coarse Sand To Fine Gravel		26								
595.80			27								
594.80	Medium To Dense Gray Coarse Sand To Fine Gravel		28	11	SS	---	15	---	---		
593.80			29								
592.80	Medium To Dense Gray Coarse Sand To Fine Gravel		30								
591.80			31	12	SS	---	21	---	---		
590.80	Medium To Dense Gray Coarse Sand To Fine Gravel		32								
589.80			33								
588.80	Medium To Dense Gray Coarse Sand To Fine Gravel		34								
587.80			35	13	SS	---	28	---	---		
586.80	Medium To Dense Gray Coarse Sand To Fine Gravel		36								
585.80			37								
584.80	Very Dense Dark Gray Sandstone (Weakly Cemented)		38								
583.80			39								
582.80	Very Dense Dark Gray Sandstone (Weakly Cemented)		40								
581.80			41	14	SS	---	100 6"	---	---		

Groundwater Data: Static water level after auger removal - Elevation 608.5.
Comments:

REVISION	DATE	BY	REMARKS

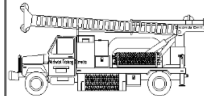
DESIGNED	ATK
DRAWN	DAN
REVIEWED	MRL
APPROVED	MRL

LASALLE COUNTY
F.A.S. 1365 OVER PECUMSAUGAN CREEK
STATION 20+00



BORING LOGS
STRUCTURAL SHEET NO. 4 OF 6 SHEETS

F.A.S. RTE.	SECTION	COUNTY	TOTAL SHEETS	SHEET NO.
1365	18-00807-00-DR	LASALLE	19	12
WHA# 1412D19		CONTRACT NO. 87743		
ILLINOIS FED. AID PROJECT				

	Midwest Testing Services, Inc. 3705 Progress Blvd. Peru, IL 61354	BORING LOG Sheet <u>3</u> of <u>3</u>	Phone: 815-223-6696 Fax: 815-223-6659 e-mail: mts37@comcast.net
	Client: <u>Willet, Hofmann & Associates</u> Project Name: <u>CH 33 Over Pecumsaugem Creek</u> Project Site: <u>Waltham Township, LaSalle County, Illinois</u>	Boring No. <u>B-1</u> Surface Elev. <u>622.80</u> Auger Depth <u>51'</u> Rotary Depth <u>NA</u> Start Date <u>06/13/20</u> Finish Date <u>06/13/20</u>	

Location: 9' Left of Station 20+23

(DEPTH) ELEV.	DESCRIPTION OF MATERIALS	Graphic Log	Depth in feet	SAMPLES						DRILLED BY	REMARKS
				Sample No.	Sample Type	Qu (TSF)	N Value (Blows)	Bulge / Shear	Moisture (%)		
580.80											
579.80			43								
578.80			44								
577.80	Very Dense Dark Gray To White Sandstone (Weakly Cemented)		45	15	SS	---	100 4"	---	---		
576.80			46								
575.80			47								
574.80			48								
573.80			49								
572.80			50								
571.80			51	16	SS	---	100 2"	---	---		
570.80			52								
569.80			53								
568.80			54								
567.80			55								
566.80			56								
565.80			57								
564.80			58								
563.80			59								
562.80			60								
561.80			61								
560.80			62								

Groundwater Data: Static water level after auger removal - Elevation 608.5.
 Comments:

	Midwest Testing Services, Inc. 3705 Progress Blvd. Peru, IL 61354	BORING LOG Sheet <u>1</u> of <u>3</u>	Phone: 815-223-6696 Fax: 815-223-6659 e-mail: mts37@comcast.net
	Client: <u>Willet, Hofmann & Associates</u> Project Name: <u>CH 33 Over Pecumsaugem Creek</u> Project Site: <u>Waltham Township, LaSalle County, Illinois</u>	Boring No. <u>B-2</u> Surface Elev. <u>622.80</u> Auger Depth <u>51'</u> Rotary Depth <u>NA</u> Start Date <u>06/13/20</u> Finish Date <u>06/13/20</u>	

Location: 9' Right of Station 19+77

(DEPTH) *ELEV.	DESCRIPTION OF MATERIALS	Graphic Log	Depth in feet	SAMPLES						DRILLED BY	REMARKS
				Sample No.	Sample Type	Qu (TSF)	N Value (Blows)	Bulge / Shear	Moisture (%)		
622.80											
621.80			1								
620.80	Stiff Brownish Gray Clay(Fill)		2								
619.80			3	1	SS	1.5	6	B	19		
618.80			4								
617.80	Stiff Black Clay		5								
616.80			6	2	SS	1.0	4	B	23		
615.80			7								
614.80	Stiff Brownish Gray Clay		8								
613.80			9								
612.80			10	3	SS	1.4	5	B	22		
611.80			11								
610.80	Very Stiff Brownish Gray Clay Till		12								
609.80			13	4	SS	1.2	5	B	22		
608.80			14								
607.80	Very Stiff Gray Clay Till		15								
606.80			16	5	SS	2.2	8	B	16		
605.80			17								
604.80			18								
603.80			19								
602.80			20								
				6	SS	2.4	9	B	14		
				7	SS	2.3	8	B	15		
				8	SS	2.7	10	B	12		

Groundwater Data: Static water level after auger removal - Elevation 608.5.
 Comments:

REVISION	DATE	BY	REMARKS
DESIGNED	ATK		
DRAWN	DAN		
REVIEWED	MRL		
APPROVED	MRL		

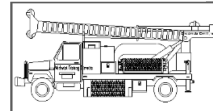
LASALLE COUNTY
F.A.S. 1365 OVER PECUMSAUGAN CREEK
STATION 20+00



WILLET HOFMANN & ASSOCIATES INC.
 ENGINEERING ARCHITECTURE LAND SURVEYING
 809 EAST 2ND STREET, DIXON, IL 61021-0367
 T: 815-284-3381 DESIGN FIRM: #184-000918

BORING LOGS
STRUCTURAL SHEET NO. 5 OF 6 SHEETS

F.A.S. RTE.	SECTION	COUNTY	TOTAL SHEETS	SHEET NO.
1365	18-00807-00-DR	LASALLE	19	13
WHA# 1412D19		CONTRACT NO. 87743		
ILLINOIS FED. AID PROJECT				



Midwest Testing Services, Inc.
3705 Progress Blvd.
Peru, IL 61354

BORING LOG

Sheet 2 of 3

Phone: 815-223-6696
Fax: 815-223-6659
e-mail: mts37@comcast.net

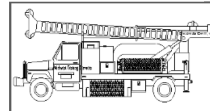
Client: Willet, Hofmann & Associates
Project Name: CH 33 Over Pecumsaugem Creek
Project Site: Waltham Township, LaSalle County, Illinois

Boring No. B-2
Surface Elev. 622.80
Auger Depth 51' Rotary Depth NA
Start Date 06/13/20 Finish Date 06/13/20

Location: 9' Right of Station 19+77

(DEPTH) ELEV.	DESCRIPTION OF MATERIALS	Graphic Log	Depth in feet	SAMPLES						DRILLED BY	REMARKS
				Sample No.	Sample Type	Qu (TSF)	N Value (Blows)	Bulge / Shear	Moisture (%)		
601.80											
600.80			22								
599.80			23	9	SS	---	16	---	---		
598.80			24								
597.80			25								
596.80	Medium Gray Fine To Coarse Sand		26	10	SS	---	14	---	---		
595.80			27								
594.80			28	11	SS	---	14	---	---		
593.80			29								
592.80			30	12	SS	---	22	---	---		
591.80			31								
590.80			32								
589.80			33								
588.80	Dense Gray Coarse Sand To Fine Gravel		34								
587.80			35								
586.80			36	13	SS	---	35	---	---		
585.80			37								
584.80			38								
583.80	Very Dense Dark Gray Sandstone (Weakly Cemented)		39								
582.80			40								
581.80			41	14	SS	---	100 4"	---	---		

Groundwater Data: Static water level after auger removal - Elevation 608.5.
Comments:



Midwest Testing Services, Inc.
3705 Progress Blvd.
Peru, IL 61354

BORING LOG

Sheet 3 of 3

Phone: 815-223-6696
Fax: 815-223-6659
e-mail: mts37@comcast.net

Client: Willet, Hofmann & Associates
Project Name: CH 33 Over Pecumsaugem Creek
Project Site: Waltham Township, LaSalle County, Illinois

Boring No. B-2
Surface Elev. 622.80
Auger Depth 51' Rotary Depth NA
Start Date 06/13/20 Finish Date 06/13/20

Location: 9' Right of Station 19+77

(DEPTH) ELEV.	DESCRIPTION OF MATERIALS	Graphic Log	Depth in feet	SAMPLES						DRILLED BY	REMARKS
				Sample No.	Sample Type	Qu (TSF)	N Value (Blows)	Bulge / Shear	Moisture (%)		
580.80											
579.80			43								
578.80			44								
577.80			45								
576.80	Very Dense Dark Gray To White Sandstone (Weakly Cemented)		46	15	SS	---	100 5"	---	---		
575.80			47								
574.80			48								
573.80			49								
572.80			50								
571.80			51	16	SS	---	100 3"	---	---		
570.80			52								
569.80			53								
568.80			54								
567.80			55								
566.80			56								
565.80			57								
564.80			58								
563.80			59								
562.80			60								
561.80			61								
560.80			62								

Groundwater Data: Static water level after auger removal - Elevation 608.5.
Comments:

REVISION	DATE	BY	REMARKS

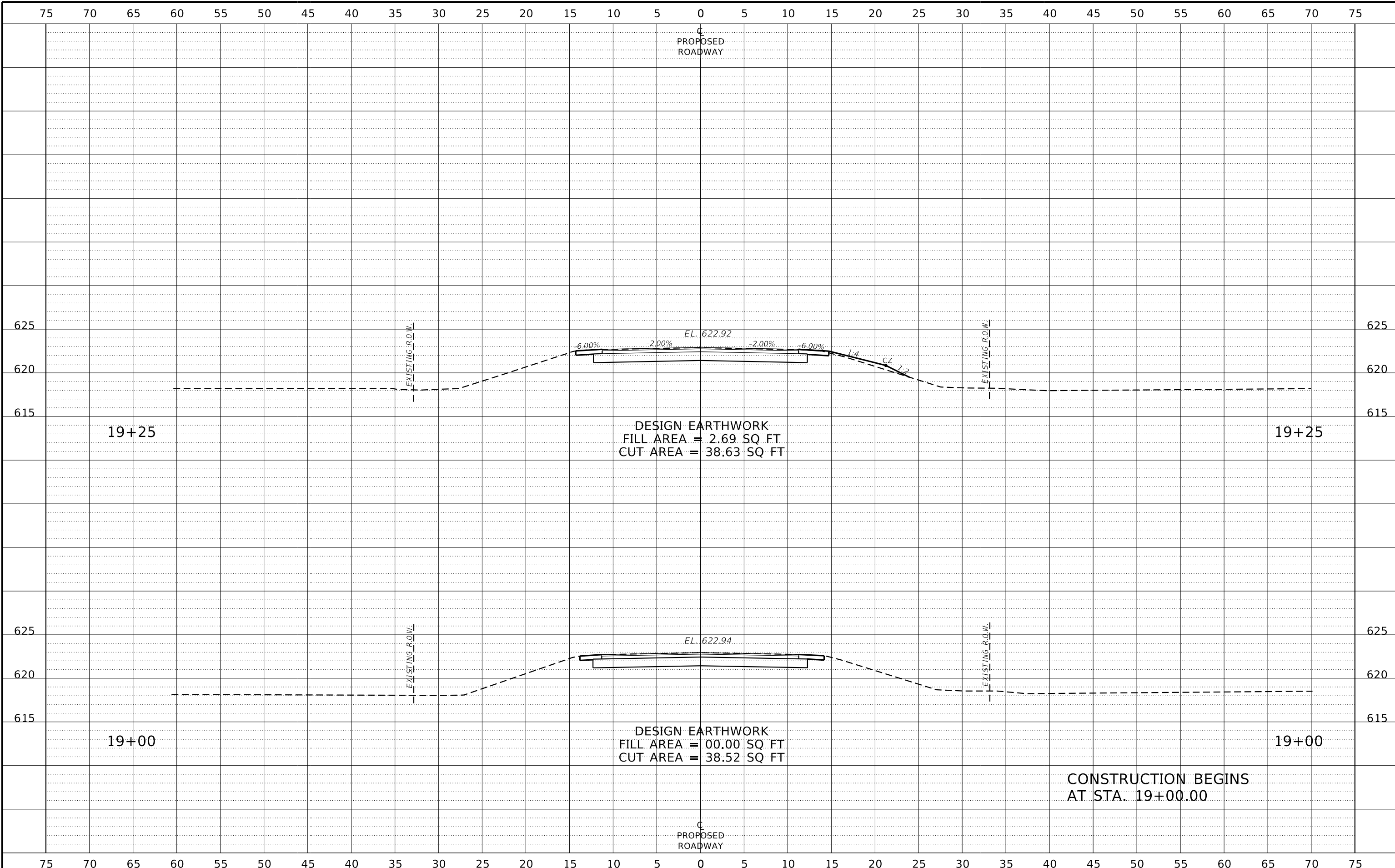
DESIGNED	ATK
DRAWN	DAN
REVIEWED	MRL
APPROVED	MRL

LASALLE COUNTY
F.A.S. 1365 OVER PECUMSAUGAN CREEK
STATION 20+00



WILLET HOFMANN & ASSOCIATES, INC.
ENGINEERING ARCHITECTURE LAND SURVEYING
809 EAST 2ND STREET, DIXON, IL 61021-0367
T: 815-284-3381 DESIGN FIRM: #184-000918

F.A.S. RTE.	SECTION	COUNTY	TOTAL SHEETS	SHEET NO.
1365	18-00807-00-DR	LASALLE	19	14
WHA# 1412019		CONTRACT NO. 87743		
ILLINOIS FED. AID PROJECT				



REVISION	DATE	BY	REMARKS

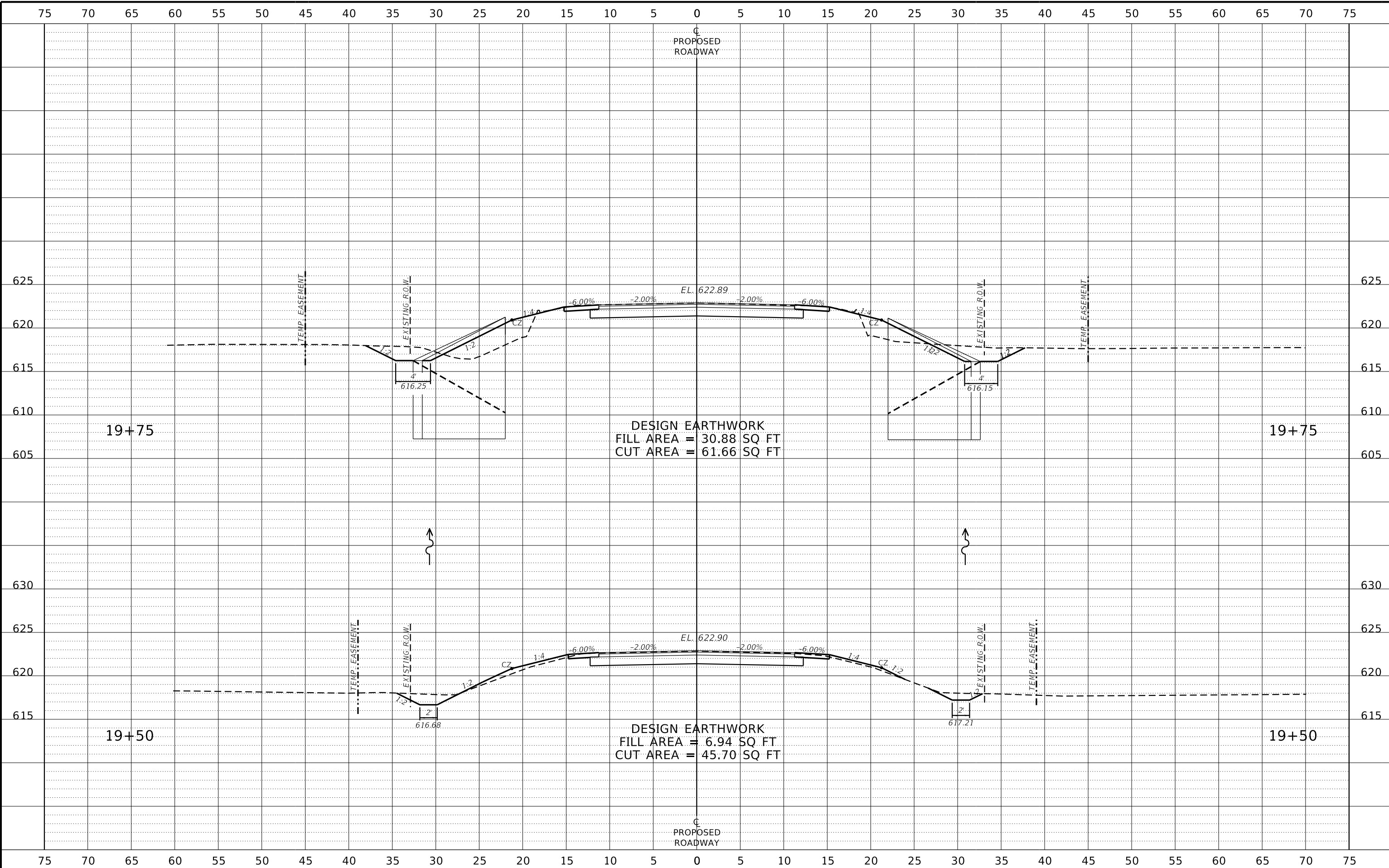
DESIGNED	ATK
DRAWN	DAN
REVIEWED	MRL
APPROVED	MRL

LASALLE COUNTY
F.A.S. 1365 OVER PECUMSAUGAN CREEK
STATION 20+00



CROSS SECTIONS
 SCALE: 1" = 5'-0" SHEET NO. 1 OF 5 SHEETS STA. 18+50.00 TO STA. 19+25.00

F.A.S. RTE.	SECTION	COUNTY	TOTAL SHEETS	SHEET NO.
1365	18-00807-00-DR	LASALLE	19	15
WHA# 1412D19		CONTRACT NO. 87743		
ILLINOIS FED. AID PROJECT				



REVISION	DATE	BY	REMARKS

DESIGNED	ATK
DRAWN	DAN
REVIEWED	MRL
APPROVED	MRL

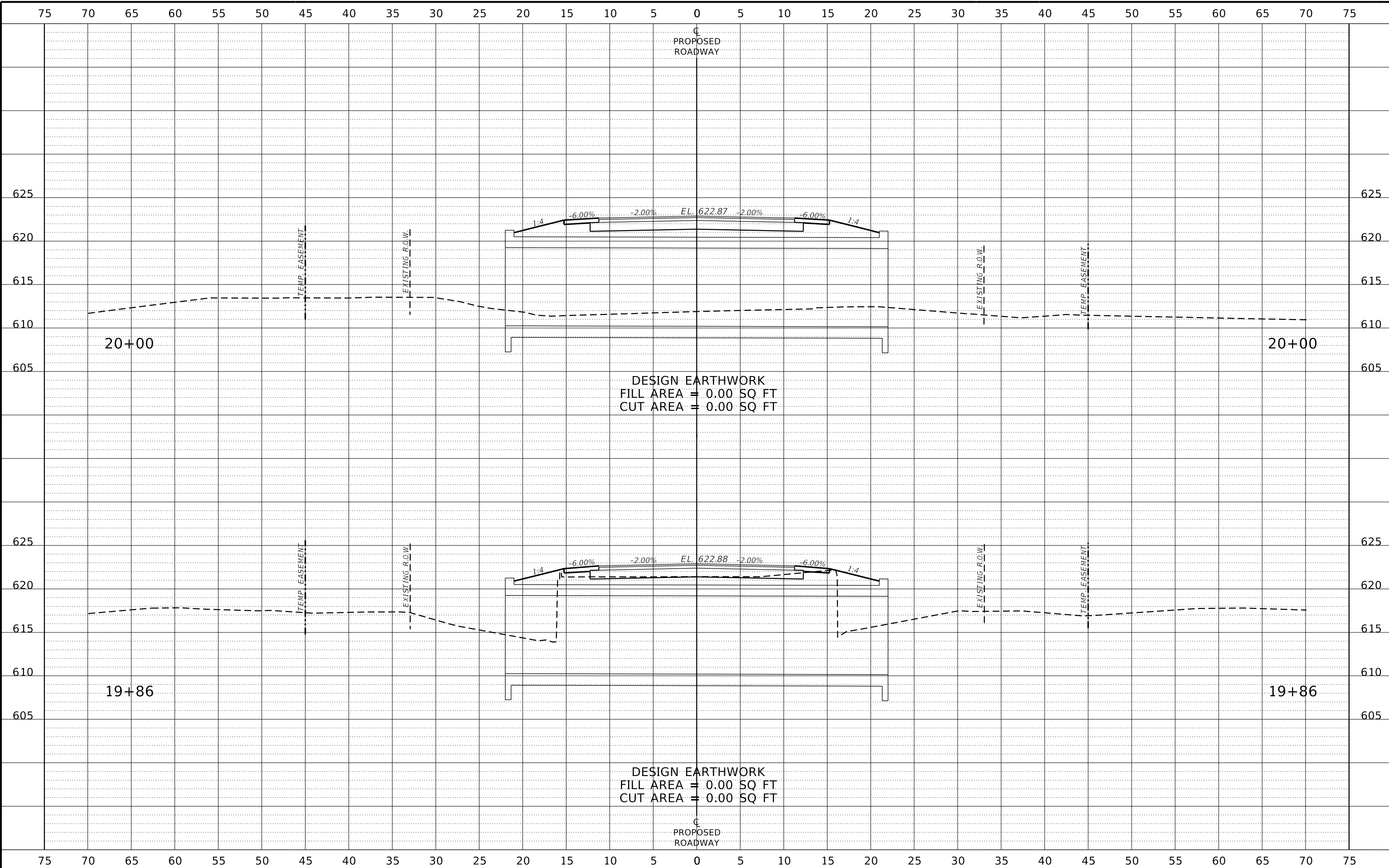
LASALLE COUNTY
F.A.S. 1365 OVER PECUMSAUGAN CREEK
STATION 20+00



CROSS SECTIONS

SCALE: 1" = 5'-0" SHEET NO. 2 OF 5 SHEETS STA. 19+50.00 TO STA. 19+75.00

F.A.S. RTE.	SECTION	COUNTY	TOTAL SHEETS	SHEET NO.
1365	18-00807-00-DR	LASALLE	19	16
WHA# 1412D19		CONTRACT NO. 87743		
ILLINOIS FED. AID PROJECT				



DESIGN EARTHWORK
 FILL AREA = 0.00 SQ FT
 CUT AREA = 0.00 SQ FT

DESIGN EARTHWORK
 FILL AREA = 0.00 SQ FT
 CUT AREA = 0.00 SQ FT

REVISION	DATE	BY	REMARKS

DESIGNED	ATK
DRAWN	DAN
REVIEWED	MRL
APPROVED	MRL

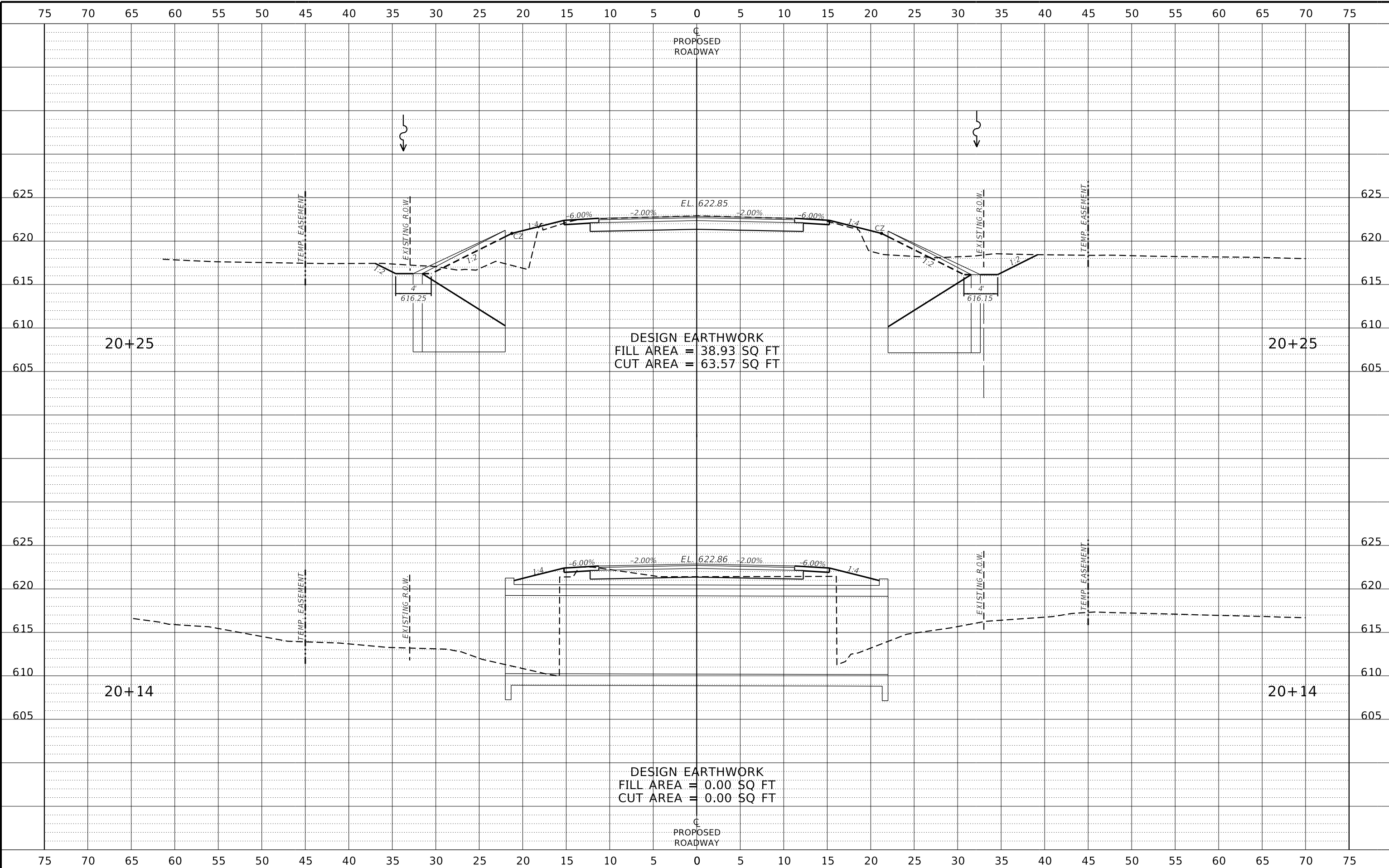
LASALLE COUNTY
F.A.S. 1365 OVER PECUMSAUGAN CREEK
STATION 20+00



CROSS SECTIONS

SCALE: 1" = 5'-0" SHEET NO. 3 OF 5 SHEETS STA. 19+86.00 TO STA. 20+00.00

F.A.S. RTE.	SECTION	COUNTY	TOTAL SHEETS	SHEET NO.
1365	18-00807-00-DR	LASALLE	19	17
WHA# 1412D19		CONTRACT NO. 87743		
ILLINOIS FED. AID PROJECT				



REVISION	DATE	BY	REMARKS

DESIGNED	ATK
DRAWN	DAN
REVIEWED	MRL
APPROVED	MRL

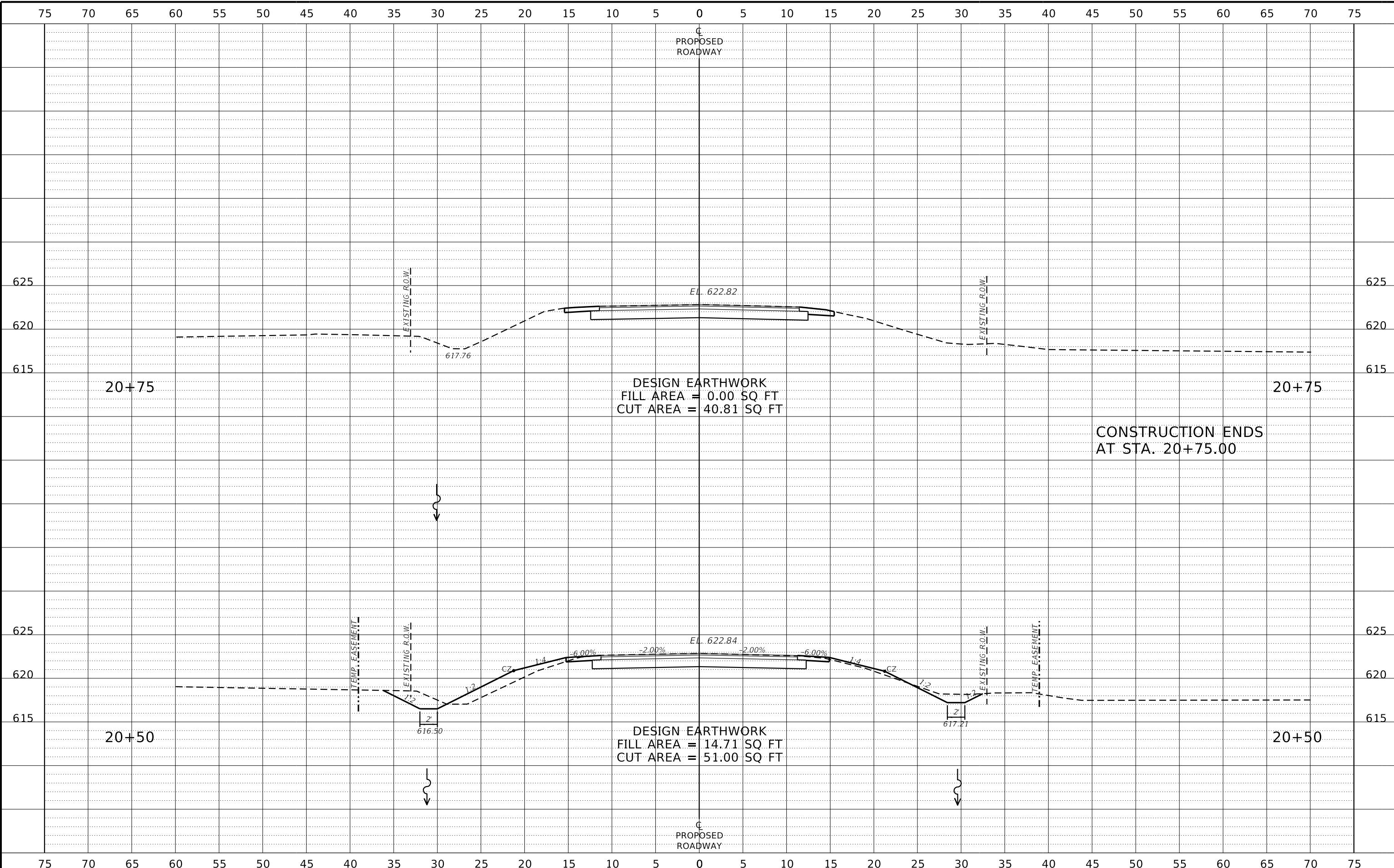
LASALLE COUNTY
F.A.S. 1365 OVER PECUMSAUGAN CREEK
STATION 20+00



CROSS SECTIONS

SCALE: 1" = 5'-0" SHEET NO. 4 OF 5 SHEETS STA. 20+14.00 TO STA. 20+25.00

F.A.S. RTE.	SECTION	COUNTY	TOTAL SHEETS	SHEET NO.
1365	18-00807-00-DR	LASALLE	19	18
WHA# 1412D19		CONTRACT NO. 87743		
ILLINOIS FED. AID PROJECT				



CONSTRUCTION ENDS AT STA. 20+75.00

REVISION	DATE	BY	REMARKS

DESIGNED	ATK
DRAWN	DAN
REVIEWED	MRL
APPROVED	MRL

LASALLE COUNTY
F.A.S. 1365 OVER PECUMSAUGAN CREEK
STATION 20+00



CROSS SECTIONS
 SCALE: 1" = 5'-0" SHEET NO. 5 OF 5 SHEETS STA. 20+50.00 TO STA. 20+88.00

F.A.S. RTE.	SECTION	COUNTY	TOTAL SHEETS	SHEET NO.
1365	18-00807-00-DR	LASALLE	19	19
WHA# 1412D19		CONTRACT NO. 87743		
ILLINOIS FED. AID PROJECT				