

FOR INDEX OF SHEETS, SEE SHEET NO. 2
FOR SUMMARY OF QUANTITIES, SEE SHEETS NO. 3

STATE OF ILLINOIS
DEPARTMENT OF TRANSPORTATION

FAI RTE.	SECTION	COUNTY	TOTAL SHEETS	SHEET NO.
57	CM21-5011	DOUGLAS	11	1
		ILLINOIS		CONTRACT NO. 70F08

PROPOSED HIGHWAY PLANS

FAI ROUTE 57 (I-57)
SECTION CM21-5011
PROJECT
CONTRACT MAINTENANCE PATCHING
DOUGLAS COUNTY

CURRENT TRAFFIC DATA

I-57 COLES/DOUGLAS COUNTY LINE TO IL 133

2020 ADT: 21,200
2030 ADT: 22,500
P.U. & P.C.%: 69.0
SU%= 3.2
MU%= 27.8

I-57 IL 133 TO US 36

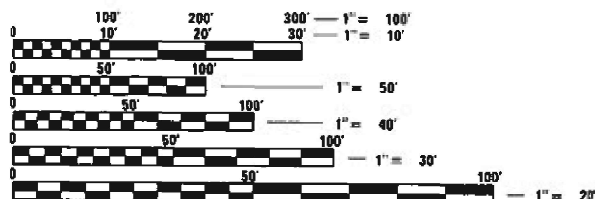
2020 ADT: 22,400
2030 ADT: 23,500
P.U. & P.C.%: 65.5
SU%= 2.8
MU%= 31.7

I-57 US 36 TO CHAMPAIGN/DOUGLAS COUNTY LINE

2020 ADT: 23,500
2030 ADT: 24,700
P.U. & P.C.%: 65.3
SU%= 3.2
MU%= 31.5

FUNCTIONAL CLASSIFICATION
INTERSTATE

TOWNSHIP:
ARCOLA/TUSCOLA



FULL SIZE PLANS HAVE BEEN PREPARED USING STANDARD ENGINEERING SCALES. REDUCED SIZED PLANS WILL NOT CONFORM TO STANDARD SCALES. IN MAKING MEASUREMENTS ON REDUCED PLANS, THE ABOVE SCALES MAY BE USED.

J.U.L.I.E.
JOINT UTILITY LOCATION INFORMATION FOR EXCAVATORS
1-800-892-0123
OR 811

PROJECT ENGINEER: JASON W. STULTS
DESIGNERS: ROBERT A. HODGSON
BRANDON C. SCHULTZ
PHONE: (217)-465-4181
CONTRACT NO. 70F08

C-95-024-21
S OF ARCOLA TO N OF TUSCOLA ON I-57
R B E

END SECTION:
STA. 693+00.00

STATION EQUATION:
687+00.00(BK) = 687+03.30(AH)

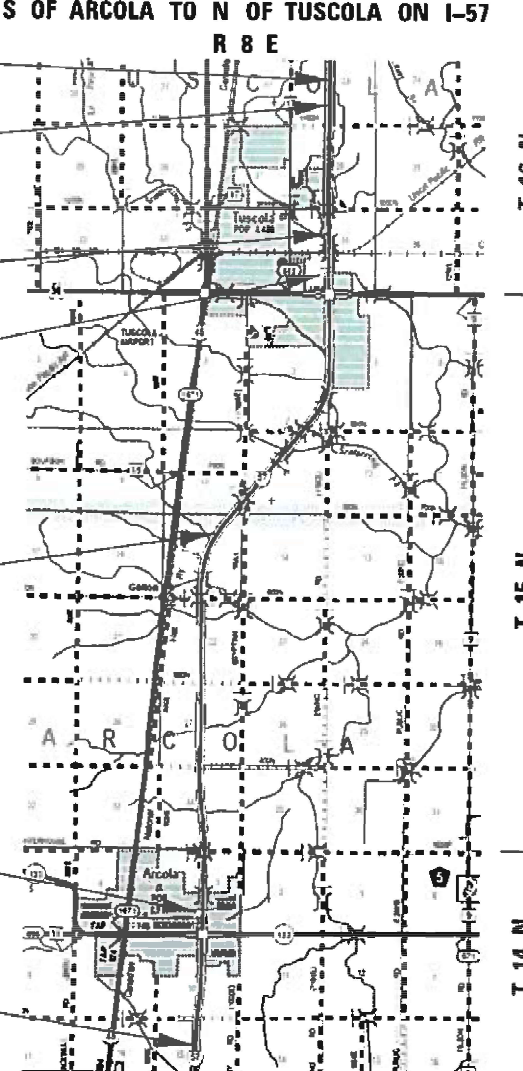
STATION EQUATION:
575+43.68(BK) = 575+43.98(AH)

STATION EQUATION:
547+00.00(BK) = 547+01.25(AH)

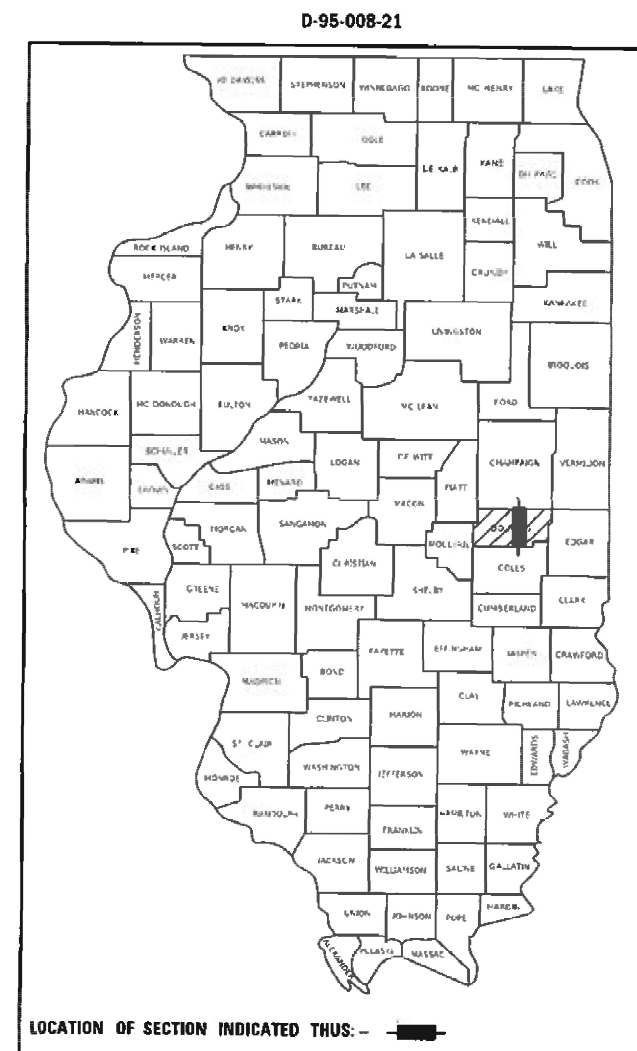
STATION EQUATION:
360+83.33(BK) = 360+87.35(AH)

STATION EQUATION:
1510+00(BK) = 117+23.47(AH)

BEGIN SECTION
STA. 1486+00.00



GROSS LENGTH = 59,967.66 FT. = 11.357 MILE
NET LENGTH = 59,967.66 FT. = 11.357 MILE



STATE OF ILLINOIS
DEPARTMENT OF TRANSPORTATION

SUBMITTED 1/21 2021
Kenala Garnett
REGIONAL ENGINEER

March 19, 2021
Jason W. Stults
ENGINEER OF DESIGN AND ENVIRONMENT

March 19, 2021
James J. Quinn
DIRECTOR OF HIGHWAYS PROJECT IMPLEMENTATION

**PRINTED BY THE AUTHORITY
OF THE STATE OF ILLINOIS**

INDEX OF SHEETS

SHEET NO.	DESCRIPTION
1	COVER SHEET
2	INDEX OF SHEETS
2	LIST OF HIGHWAY STANDARDS
2	GENERAL NOTES
3-4	SUMMARY OF QUANTITIES
5-7	TYPICAL CROSS SECTIONS
8	SCHEDULE OF QUANTITIES
9-10	CLASS A PATCHES (SPECIAL)
11	TEMPORARY RUMBLE STRIPS (SPECIAL)

GENERAL NOTES

NONE

HIGHWAY STANDARDS

STANDARD NO.	DESCRIPTION
000001-08	STANDARD SYMBOLS, ABBREVIATIONS AND PATTERNS
001001-02	AREAS OF REINFORCEMENT BARS
001006	DECIMAL OF AN INCH AND OF A FOOT
701400-10	APPROACH TO LANE CLOSURE
701401-12	LANE CLOSURE, FREEWAY/EXPRESSWAY
701411-09	LANE CLOSURE, MULTILANE, AT ENTRANCE OR EXIT RAMP >45 MPH
701426-09	LANE CLOSURE, MULTILANE, INTERMITTENT OR MOVING OPER., FOR SPEEDS > 45MPH
701428-01	TRAFFIC CONTROL SETUP AND REMOVAL FREEWAY/EXPRESSWAY
701901-08	TRAFFIC CONTROL DEVICES

NO COMMITMENTS

MODEL: \\MODEL\MAR\FE
 FILE NAME: \\pub\hmc\mca.dwg
 PROJECT: \\projects\0570\08\CAD\03\03\CAD\FRCS\0570F08.rht-egenrate.dgn

USER NAME = DietzCB	DESIGNED -	REVISED -	STATE OF ILLINOIS DEPARTMENT OF TRANSPORTATION	INDEX OF SHEETS, GENERAL NOTES AND HIGHWAY STANDARDS			F.A.I. RTE.	SECTION	COUNTY	TOTAL SHEETS	SHEET NO.
DRAWN -	REVISIONS -			VAR.	CM21-5011	*	11	2			
PLOT SCALE = 40,0000 */ in.	CHECKED -	REVISED -		CONTRACT NO. 70F08							
PLOT DATE = 1/15/2021	DATE -	REVISED -		SCALE:	SHEET 1	OF 1	SHEETS	STA.	TO STA.	ILLINOIS	FED. AID PROJECT

SUMMARY OF QUANTITIES

LOCATION OF WORK:	FAI 57 (I-57)
	RURAL
	INTERSTATE
	STA. 1486+00 TO STA. 693+00
	DOUGLAS COUNTY
FUNDING BREAKOUT:	100% STATE
CONSTRUCTION TYPE CODE:	0006

CODE NO.	ITEM	UNIT	TOTAL QUANTITY	
44213000	PATCHING REINFORCEMENT	SQ YD	185.0	185.0
44213200	SAW CUTS	FOOT	680.0	680.0
44213204	TIE BARS 3/4"	EACH	338.0	338.0
67100100	MOBILIZATION	L SUM	1.0	1.0
70100420	TRAFFIC CONTROL AND PROTECTION, STANDARD 701411	EACH	8.0	8.0
70100800	TRAFFIC CONTROL AND PROTECTION, STANDARD 701401	L SUM	1.0	1.0
70107025	CHANGEABLE MESSAGE SIGN	CAL DA	36.0	36.0
70103815	TRAFFIC CONTROL SURVEILLANCE	CAL DA	4.0	4.0
X1700116	CLASS A PATCHES, TYPE I, 12 INCH (SPECIAL)	SQ YD	4.0	4.0
X1700052	CLASS A PATCHES, TYPE II, 12 INCH (SPECIAL)	SQ YD	54.0	54.0
X1700056	CLASS A PATCHES, TYPE III, 13 INCH (SPECIAL)	SQ YD	20.0	20.0
X1700057	CLASS A PATCHES, TYPE IV, 13 INCH (SPECIAL)	SQ YD	25.0	25.0
X1700079	CLASS A PATCHES, TYPE III, 12 INCH (SPECIAL)	SQ YD	32.0	32.0
X2700001	TEMPORARY RUMBLE STRIPS (SPECIAL)	EACH	16.0	16.0
* DENOTES SPECIALTY ITEM				

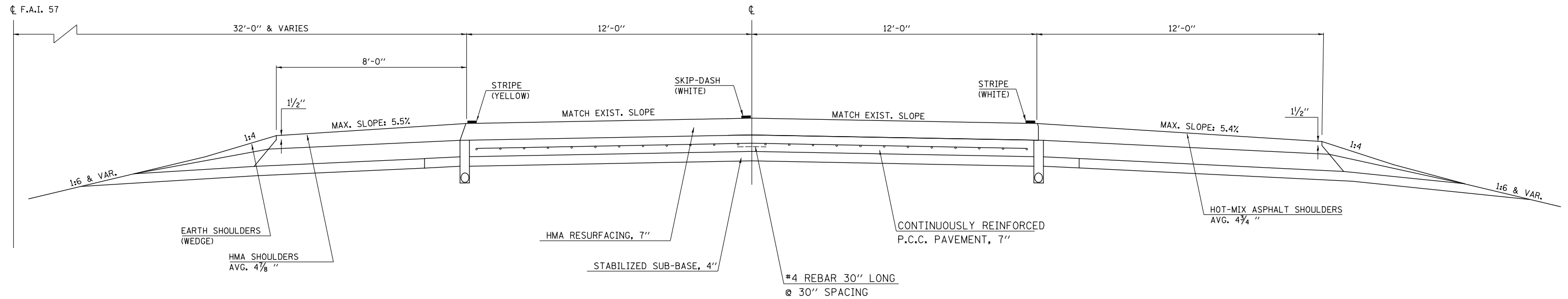
MODEL: \\MODELNAME\$ FILE: \\FILENAME.plt | \\servername\et.illinois.gov\PIV\DOT\Documents\DOT - Office\District 3\Projects\0570F\01\CD\Drawings\CAD\Sheet0570F08-PT-500.dgn

USER NAME = DietzCB	DESIGNED -	REVISED -	STATE OF ILLINOIS DEPARTMENT OF TRANSPORTATION	SUMMARY OF QUANTITIES				FAI RTE.	SECTION	COUNTY	TOTAL SHEETS	SHEET NO.		
PLOT SCALE = 40.0000' / in.	DRAWN -	REVISED -		SCALE:	SHEET 1	OF 2	SHEETS	STA.	TO STA.	57	CM21-5011	DOUGLAS	11	3
PLOT DATE = 1/15/2021	CHECKED -	REVISED +		CONTRACT NO. 70F08										
	DATE -	REVISED +		ILLINOIS FED. AID PROJECT										

1 EXISTING TYPICAL SECTION

STATION EQN: 575+43.68 BK = 575+43.98 AH
687+00.00 BK = 687+03.30 AH

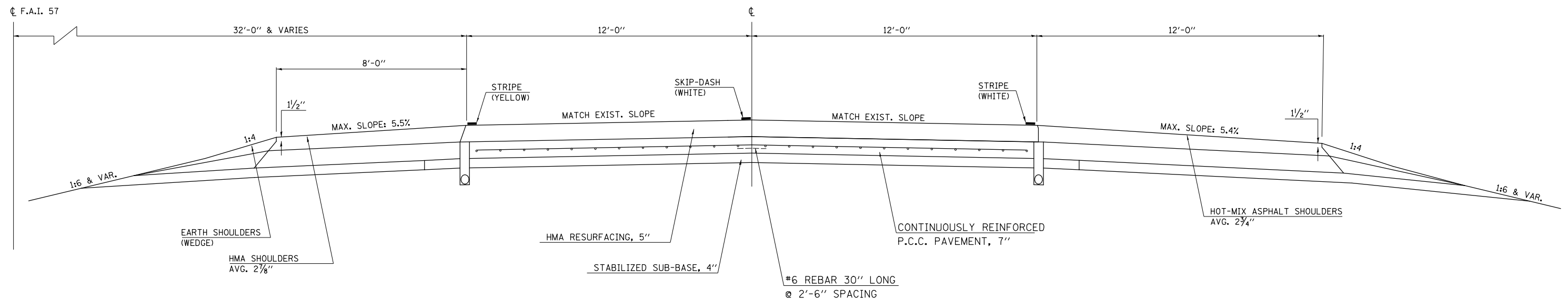
STATION 1386+91.00 I/Q STATION 1510+00.00 BK (STA EQN)
117+23.47 AH 175+13.87 ②



2 EXISTING TYPICAL SECTION

STATION EQN: 360+83.33 BK = 360+87.35 AH
547+00.00 BK = 547+01.25 AH

SOUTHBOUND LANES		NORTHBOUND LANES	
① STATION	I/Q	① STATION	I/Q
175+13.87		360+83.33 BK (STA EQN)	310+00.00 ③
④ 360+87.35 AH		463+69.00 ④	360+83.33 BK (STA EQN)
④ 524+70.00		528+35.17	390+00.00 ③
530+78.85		⑤ 547+00.00 BK (STA EQN)	528+33.59
		④ 524+70.00	547+00.00 BK (STA EQN)
		530+77.40	



MODEL: I:\MODEL\NAMES FILE NAME: ...

USER NAME = DietzCB	DESIGNED -	REVISED -
PLOT SCALE = 40,0000 * / in.	DRAWN -	REVISED -
PLOT DATE = 1/15/2021	CHECKED -	REVISED -
	DATE -	REVISED -

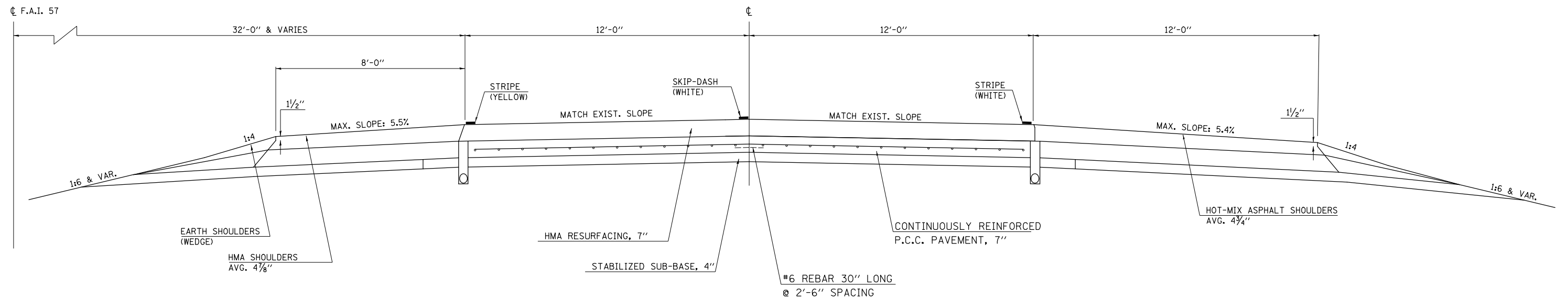
**STATE OF ILLINOIS
DEPARTMENT OF TRANSPORTATION**

TYPICAL CROSS SECTIONS	
SCALE: 1" = 20'	SHEET OF SHEETS STA. TO STA.

F.A.I. RTE.	SECTION	COUNTY	TOTAL SHEETS	SHEET NO.
57	CM21-5011	DOUGLAS	11	5
CONTRACT NO. 70F08				
ILLINOIS FED. AID PROJECT				

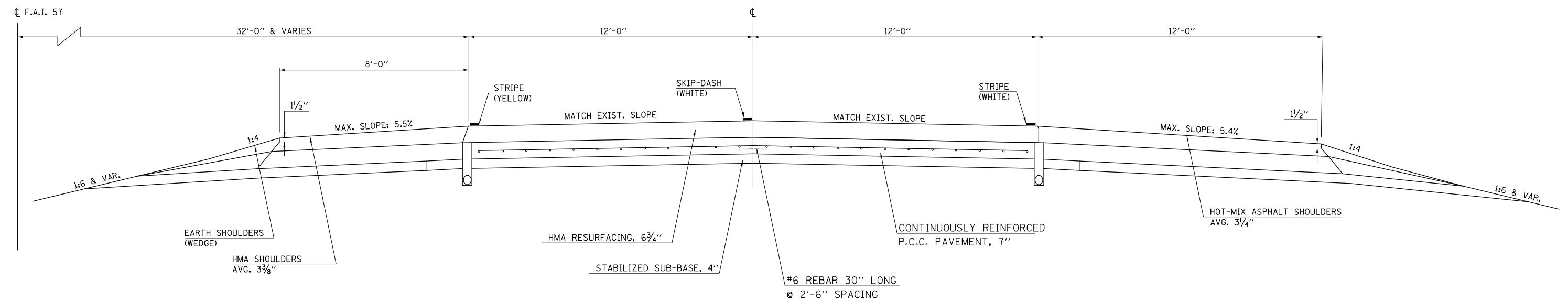
3 EXISTING TYPICAL SECTION

NORTHBOUND LANES ONLY STATION 310+00.00 IO STATION 330+00.00
 390+00.00 463+44.00



4 EXISTING TYPICAL SECTION

STATION 463+44.00 IO STATION 524+70.00



MODEL: \\MODEL\NAME
 FILE: NAME.dwg
 PROJECT: \\PROJECT\570108\CADD\DATA\CAD\FRONT\570108.rvt
 TYPICAL: 4.dwg

USER NAME = DietzCB	DESIGNED -	REVISED -
	DRAWN -	REVISED -
PLOT SCALE = 40,0000 * / in.	CHECKED -	REVISED -
PLOT DATE = 1/15/2021	DATE -	REVISED -

STATE OF ILLINOIS
 DEPARTMENT OF TRANSPORTATION

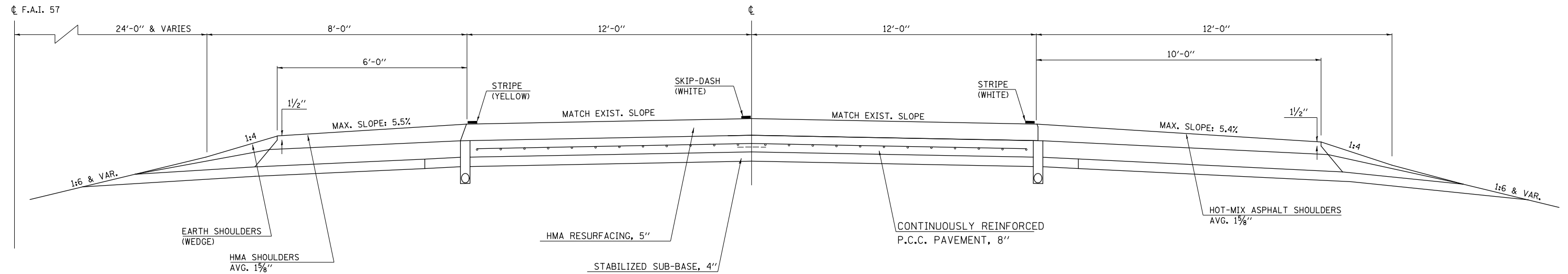
TYPICAL CROSS SECTIONS			
SCALE: 1" = 20'	SHEET	OF SHEETS	STA. TO STA.

F.A.I. RTE. 57	SECTION CM21-5011	COUNTY DOUGLAS	TOTAL SHEETS 11	SHEET NO. 6
CONTRACT NO. 70F08				
ILLINOIS FED. AID PROJECT				

5 EXISTING TYPICAL SECTION

STATION EQN: 547+00.00 BK = 547+01.25 AH
 575+43.68 BK = 575+43.98 AH
 687+00.00 BK = 687+03.30 AH

② STATION TO STATION
 547+01.25 AH (STA EQN) 575+43.68 BK (STA EQN)
 575+43.98 AH 687+00.00 BK (STA EQN)
 687+03.30 AH 693+00.00



MODEL: \\MODEL\MHFS
 FILE NAME: \\p14\m14\com\dot\illinois.gov\p14\DOT\Documents\DOT_Offices\District_5\Projects\057008\CAD\Drawings\CAD\Process\057008\57008-5-1-Typical.dgn

USER NAME = DietzCB	DESIGNED -	REVISED -
	DRAWN -	REVISED -
PLOT SCALE = 40,0000 * / in.	CHECKED -	REVISED -
PLOT DATE = 1/15/2021	DATE -	REVISED -

**STATE OF ILLINOIS
 DEPARTMENT OF TRANSPORTATION**

TYPICAL CROSS SECTIONS

SCALE: 1" = 20' SHEET OF SHEETS STA. TO STA.

F.A.I. RTE.	SECTION	COUNTY	TOTAL SHEETS	SHEET NO.
57	CM21-5011	DOUGLAS	11	7
CONTRACT NO. 70F08				
ILLINOIS FED. AID PROJECT				

SCHEDULE OF QUANTITIES

STA	DIR	LANE	LENGTH (FOOT)	WIDTH (FOOT)	#5000301 CLASS A PATCHES, TYPE I, 12 INCH (SPECIAL) (SQ YD)	X1700052 CLASS A PATCHES, TYPE II, 12 INCH (SPECIAL) (SQ YD)	X1700079 CLASS A PATCHES, TYPE III, 12 INCH (SPECIAL) (SQ YD)	X1700056 CLASS A PATCHES, TYPE III, 13 INCH (SPECIAL) (SQ YD)	X1700057 CLASS A PATCHES, TYPE IV, 13 INCH (SPECIAL) (SQ YD)	X4420619 CLASS A PATCHES, TYPE I, 14 INCH (SPECIAL) (SQ YD)	X4420621 CLASS A PATCHES, TYPE II, 14 INCH (SPECIAL) (SQ YD)	44213200 SAW CUTS (FOOT)	44213000 PATCHING REINFORCEMENT (SQ YD)	44213204 TIE BARS (EACH)
1488+70	NB	DL	6	12							8.0	36.0	8.0	22
128+05	NB	DL	6	12							8.0	36.0	8.0	22
128+05	NB	PL	6	12							8.0	36.0	8.0	22
386+50	NB	DL	6	12		8.0						36.0	8.0	22
415+40	NB	DL	6	6						4.0		24.0	4.0	10
438+50	NB	DL	20	6							14.0	52.0	14.0	10
525+80	NB	DL	6	12		8.0						36.0	8.0	22
584+15	NB	DL	15	12				20.0				54.0	20.0	22
689+60	NB	DL	18.75	12					25.0			62.0	25.0	22
438+10	SB	DL	6	12		8.0						36.0	8.0	22
422+26	SB	DL	10	12		14.0						44.0	14.0	22
323+05	SB	DL	12	12			16.0					48.0	16.0	22
322+65	SB	DL	6	12		8.0						36.0	8.0	22
322+65	SB	PL	6	12		8.0						36.0	8.0	22
319+60	SB	DL	6	6	4.0							24.0	4.0	10
265+05	SB	DL	12	12			16.0					48.0	16.0	22
160+40	SB	DL	6	12							8.0	36.0	8.0	22
TOTAL					4.0	54.0	32.0	20.0	25.0	4.0	46.0	680.0	185.0	338

MODEL: \\MODEL\NAME
 FILE NAME: \\MODEL\NAME
 PROJECT: \\PROJECT\NAME
 OFFICE: \\OFFICE\NAME
 DATE: 1/15/2021

USER NAME = DietzCB	DESIGNED -	REVISED -
	DRAWN -	REVISED -
PLOT SCALE = 40,0000 * / in.	CHECKED -	REVISED -
PLOT DATE = 1/15/2021	DATE -	REVISED -

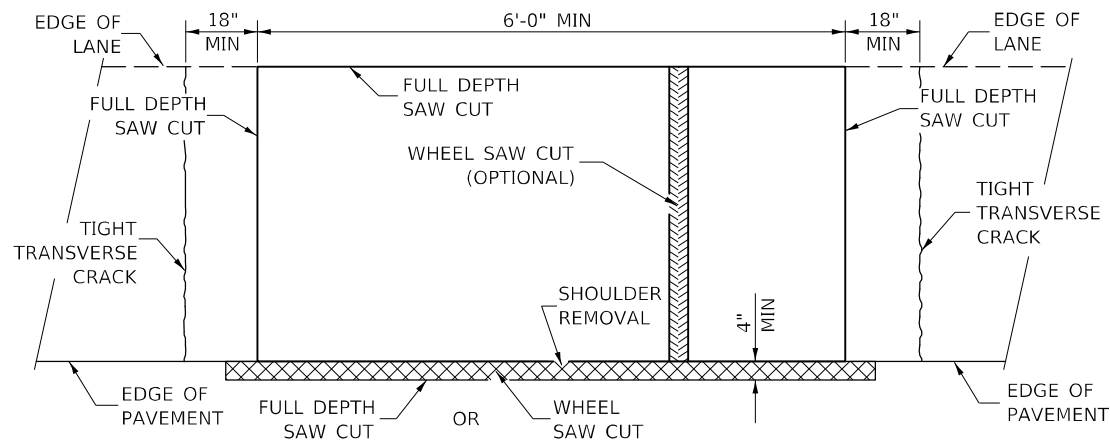
**STATE OF ILLINOIS
DEPARTMENT OF TRANSPORTATION**

SCHEDULE OF QUANTITIES

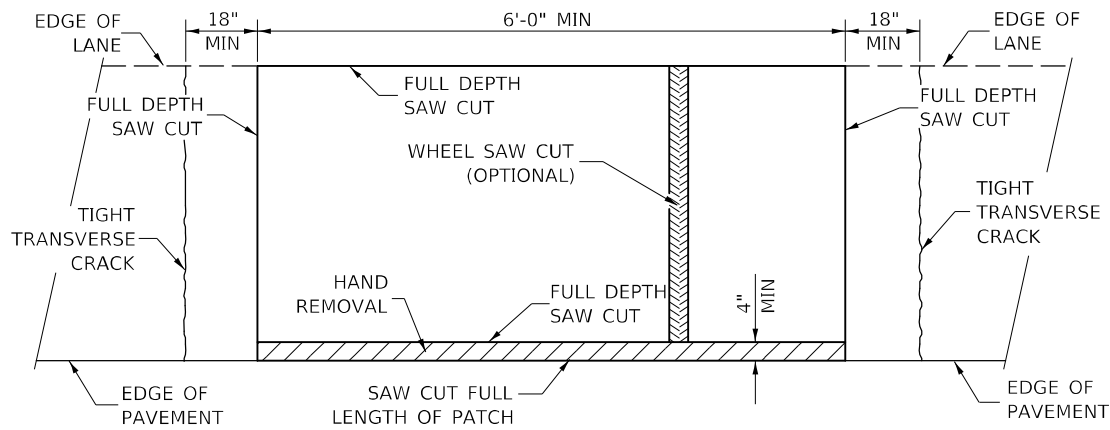
SCALE: SHEET OF SHEETS STA. TO STA.

F.A.I. RTE.	SECTION	COUNTY	TOTAL SHEETS	SHEET NO.
VAR.	CM21-5011	*	11	8
CONTRACT NO. 70F08				

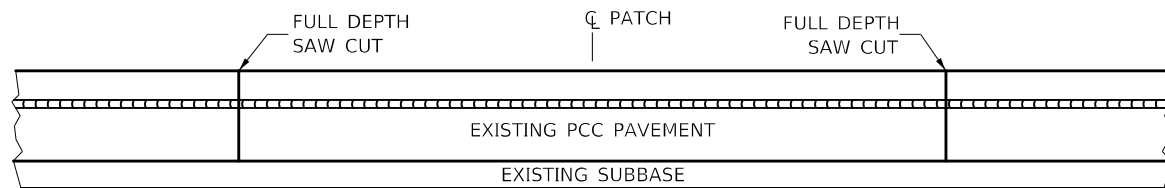
ILLINOIS FED. AID PROJECT
CHAMPAIGN, DOUGLAS & VERMILION



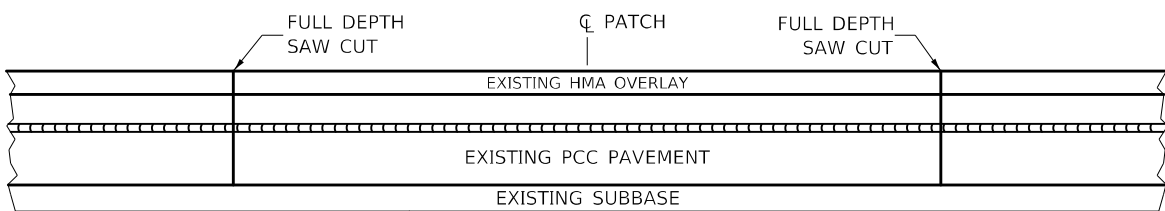
**PAVEMENT SAWING DETAIL
(HMA SHOULDER)**



**PAVEMENT SAWING DETAIL
(PCC SHOULDER)**



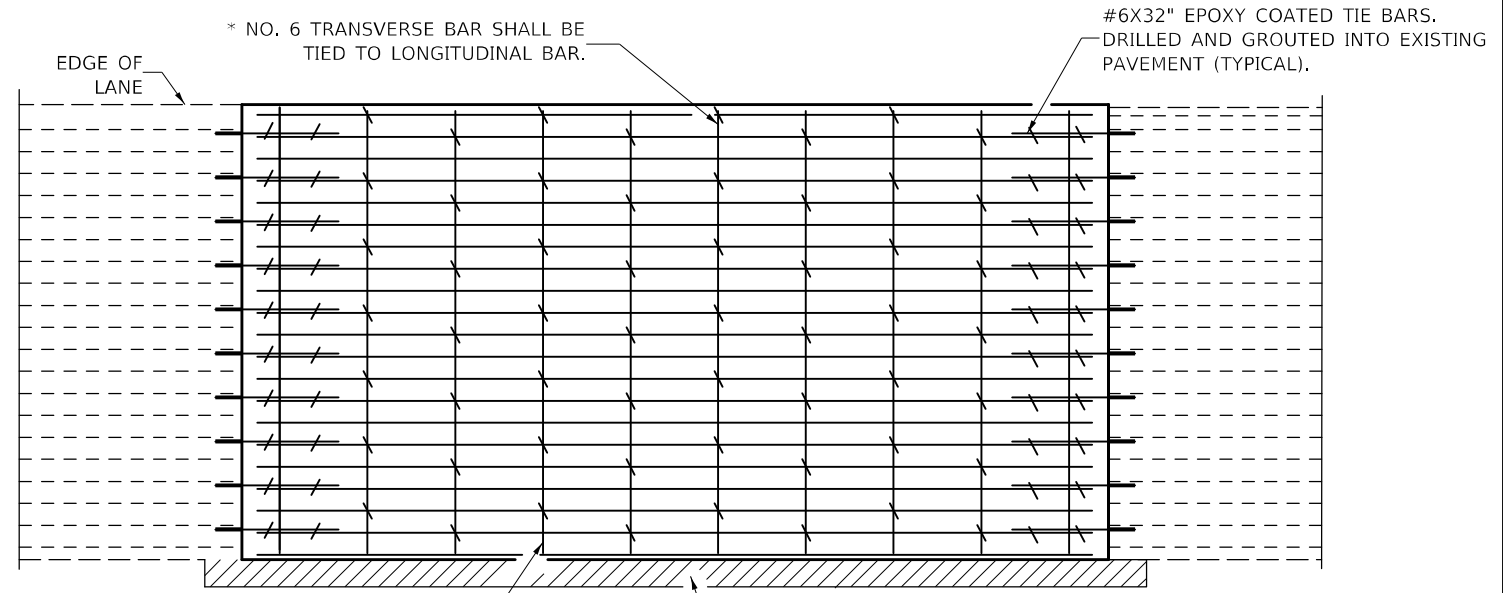
EXISTING PAVEMENT WITHOUT HMA SURFACE



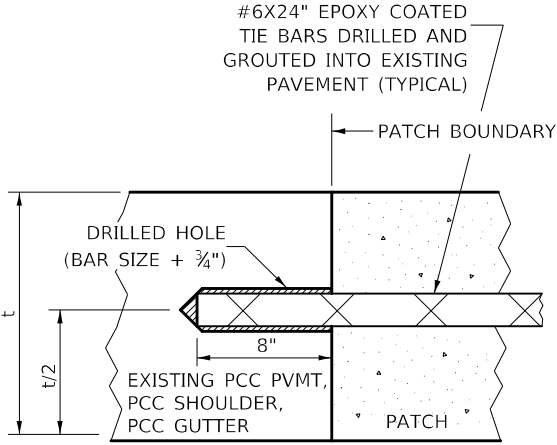
EXISTING PAVEMENT WITH HMA SURFACE

**PAVEMENT SAWING DETAIL FOR CLASS A PATCHING
(CRC PAVEMENT)**

TRANSVERSE REBAR SHALL EXTEND TO OUTER LONGITUDINAL REBAR WHILE PROVIDING A MINIMUM 3" CLEARANCE FROM EXISTING PAVEMENT EDGE



PAVEMENT REINFORCEMENT DETAIL



LONGITUDINAL CONSTRUCTION JOINT

PATCHES MORE THAN 20' IN LENGTH SHALL BE TIED TO ADJACENT PAVEMENT, PCC SHOULDERS OR PCC CURB AND GUTTER WITH #6x24" EPOXY COATED TIE BARS AT 24" CENTERS.

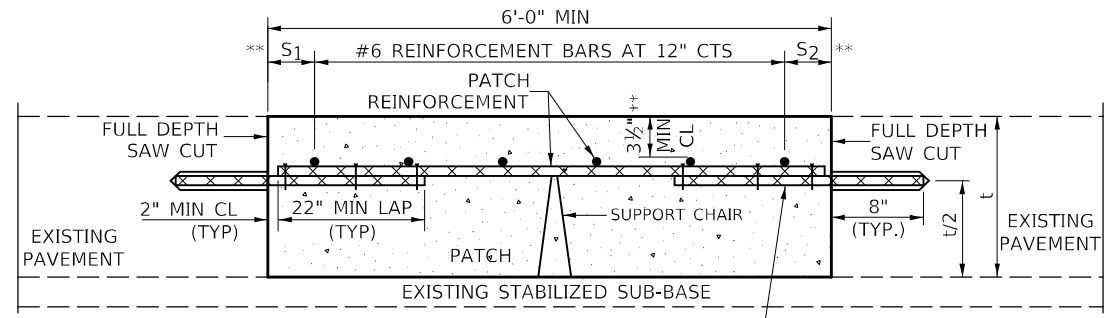
NOTES:
EXISTING LONGITUDINAL REINFORCEMENT SPACING; $\pm 6\frac{1}{2}$ ".

SPACING OF NEW LONGITUDINAL REINFORCEMENT AND NEW LONGITUDINAL TIE BARS SHALL MATCH SPACING OF EXISTING REINFORCEMENT AND SHALL BE TIED TOGETHER WITH A MINIMUM OF TWO TIES PER BAR.

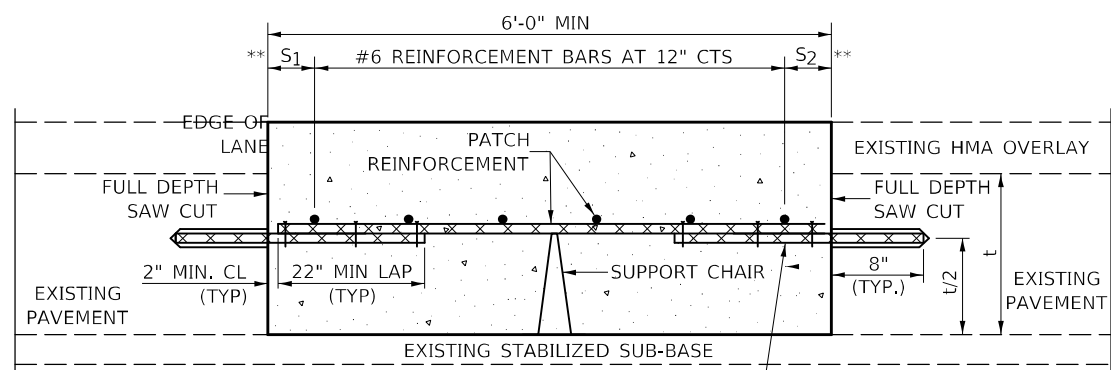
SUPPORT CHAIRS SHALL BE REQUIRED WHENEVER PATCH LENGTH EXCEEDS 6'-0"

* EVERY THIRD INTERSECTION MUST BE TIED. WHEN THE MINIMUM CLEARANCE CANNOT BE OBTAINED WITH THE TRANSVERSE REBAR ON TOP, THEN THE TRANSVERSE REBAR SHALL BE TIED TO THE BOTTOM OF THE LONGITUDINAL REBAR.

** VARIABLES WHERE S_1 AND S_2 ARE $2\frac{1}{2}$ " MIN. AND 12" MAX.



WITHOUT HMA OVERLAY



WITH HMA OVERLAY

**PATCHING DETAIL FOR CLASS A PATCHING
(CRC PAVEMENT)**

MODEL: I:\MODEL\NAME: FILE NAME: PROJECT: I:\PROJECT\570108\CADD\DWG\CADD\PROJECT\570108-RT-DRS\CLASR_4_PRACTICE

USER NAME = DietzCB	DESIGNED -	REVISED -
PLOT SCALE = 40,0000 */ in.	DRAWN -	REVISED -
PLOT DATE = 1/15/2021	CHECKED -	REVISED -
	DATE -	REVISED -

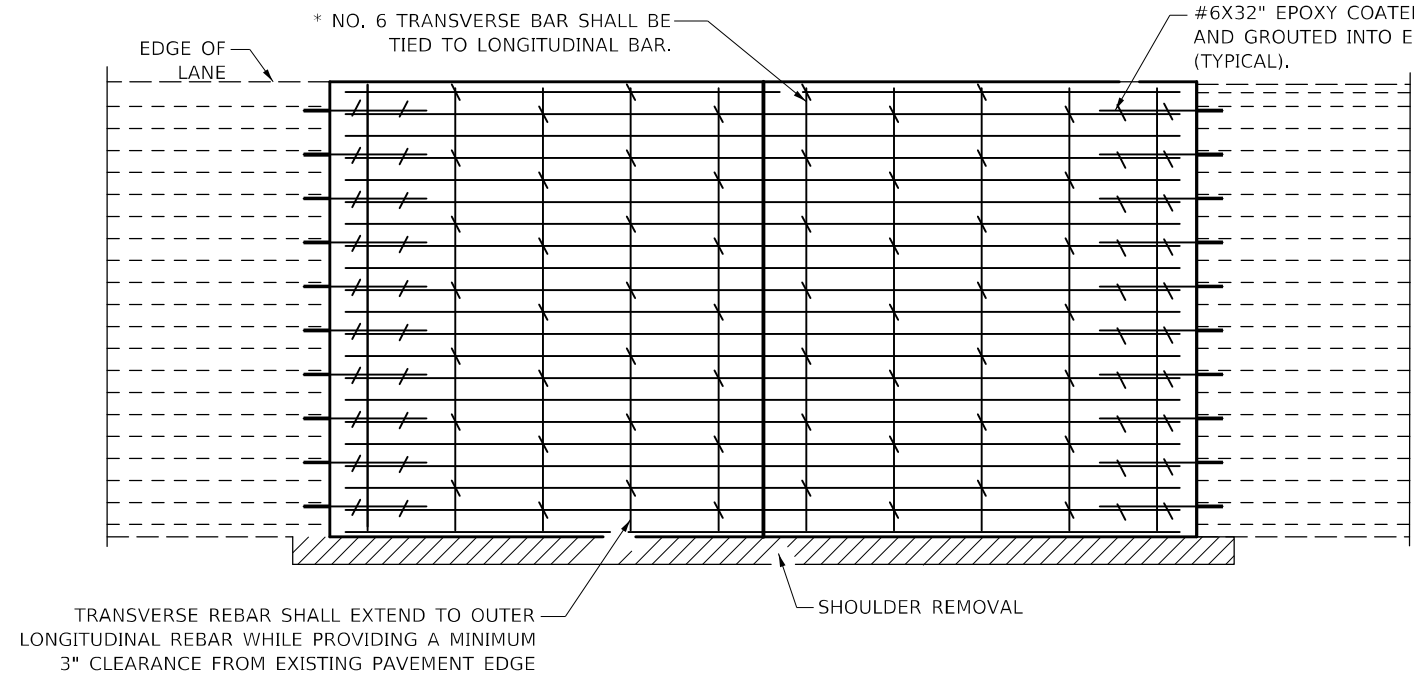
**STATE OF ILLINOIS
DEPARTMENT OF TRANSPORTATION**

CLASS A PATCHES (SPECIAL)

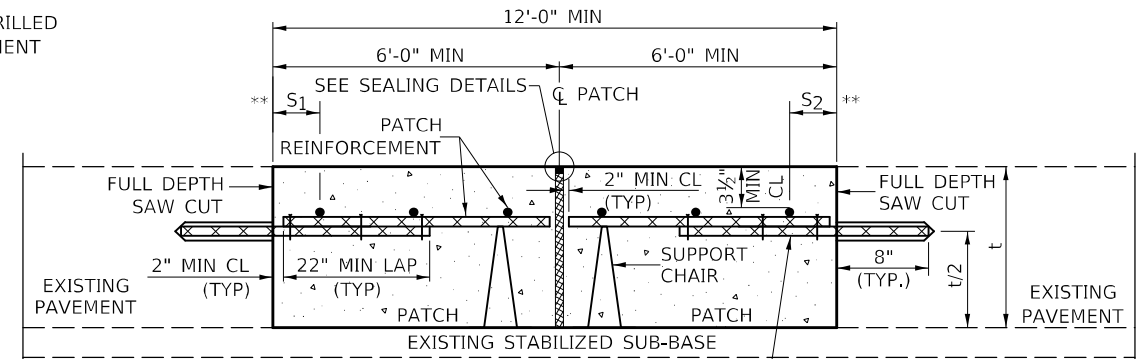
SCALE: SHEET 1 OF 2 SHEETS STA. TO STA.

F.A.I. RTE.	SECTION	COUNTY	TOTAL SHEETS	SHEET NO.
VAR.	CM21-5011		11	9
CONTRACT NO. 70F08				

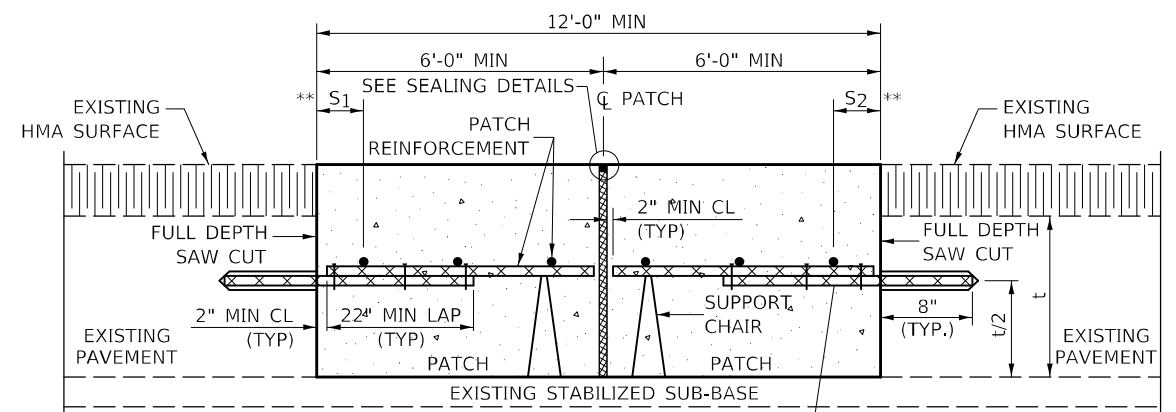
ILLINOIS FED. AID PROJECT
CHAMPAIGN, DOUGLAS & VERMILION



PAVEMENT REINFORCEMENT DETAIL

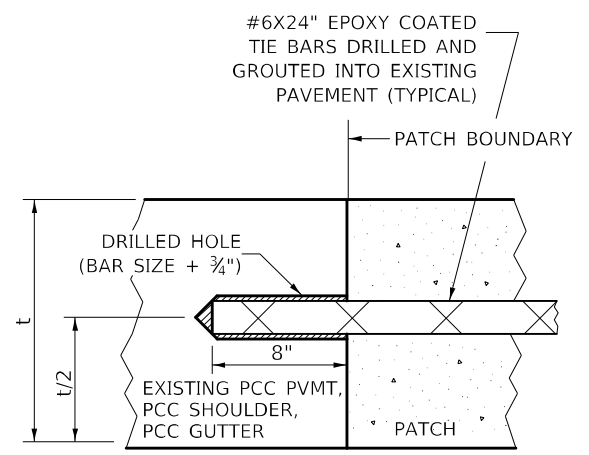


WITHOUT HMA OVERLAY

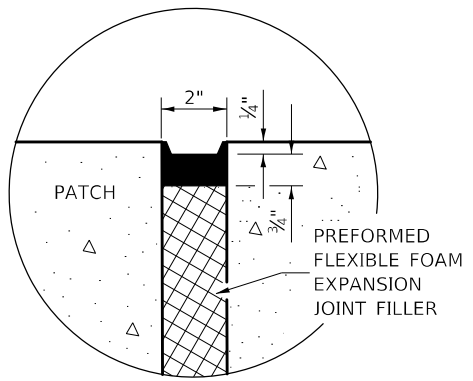


WITH HMA OVERLAY

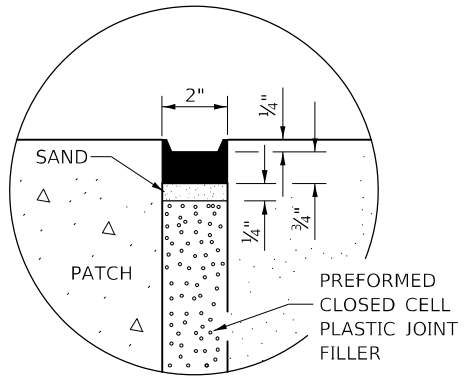
CLASS A PATCH WITH EXPANSION JOINT



LONGITUDINAL CONSTRUCTION JOINT
 PATCHES MORE THAN 20' IN LENGTH SHALL BE TIED TO ADJACENT PAVEMENT, PCC SHOULDERS OR PCC CURB AND GUTTER WITH #6x24" EPOXY COATED TIE BARS AT 36" CENTERS.



SEALING DETAIL



SEALING DETAIL

MODEL: \\MODEL\NAME
 FILE NAME: \\P\ADMIN\COMMON\DOT\Office\Drawings\Projects\0570708\PH-Drawings\Drawings\A Practices

USER NAME = DietzCB	DESIGNED -	REVISED -
	DRAWN -	REVISED -
PLOT SCALE = 40,0000 * / in.	CHECKED -	REVISED -
PLOT DATE = 1/15/2021	DATE -	REVISED -

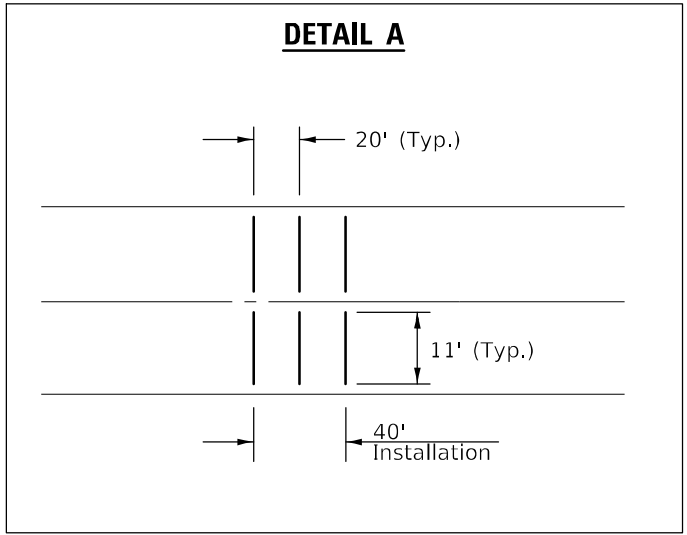
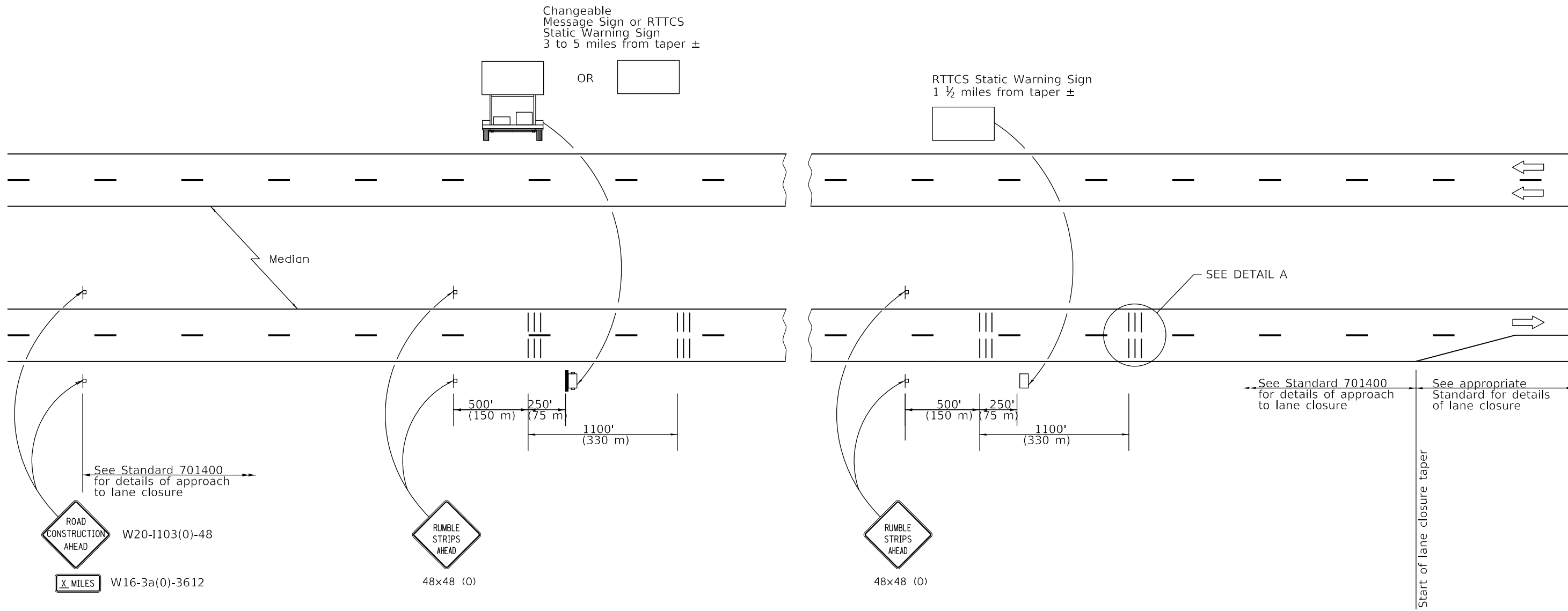
**STATE OF ILLINOIS
 DEPARTMENT OF TRANSPORTATION**

CLASS A PATCHES (SPECIAL)

SCALE: SHEET 2 OF 2 SHEETS STA. TO STA.

F.A.I. RTE.	SECTION	COUNTY	TOTAL SHEETS	SHEET NO.
	CM21-5011		11	10
CONTRACT NO. 70F08				

DETAIL FOR TEMPORARY RUMBLE STRIPS (SPECIAL)



SYMBOLS

- † Sign
- ||| Temporary Rumble Strips (Special)
- Trailer Mounted Sign
- RTTCS Static Warning Sign

GENERAL NOTES

Remove the Temporary Rumble Strips (Special) prior to the removal of the advanced warning signs.

All dimensions are in inches (millimeters) unless otherwise shown.

MODEL: \\MODEL\NAME
 FILE: NAME: \\...
 PROJECT: ...
 OFFICE: ...
 DATE: 1/15/2021

USER NAME = DietzCB	DESIGNED -	REVISED -
PLOT SCALE = 40,0000 */ in.	DRAWN -	REVISED -
PLOT DATE = 1/15/2021	CHECKED -	REVISED -
	DATE -	REVISED -

**STATE OF ILLINOIS
DEPARTMENT OF TRANSPORTATION**

DETAIL FOR TEMPORARY RUMBLE STRIPS (SPECIAL)			
SCALE: N.T.S.	SHEET 1 OF 1 SHEETS	STA.	TO STA.

F.A.I. RTE.	SECTION	COUNTY	TOTAL SHEETS	SHEET NO.
57	CM21-5011	DOUGLAS	11	11
CONTRACT NO. 70F08				
ILLINOIS FED. AID PROJECT				