

STATE OF ILLINOIS
DEPARTMENT OF TRANSPORTATION

F.A.U. RTE	SECTION	COUNTY	TOTAL SHEETS	SHEET NO.
3537	2020-104-1	DUPAGE	20	1
ILLINOIS		CONTRACT NO. 62L82		

FOR INDEX OF SHEETS, SEE SHEET NO. 2

PROJECT LOCATED IN THE VILLAGE OF ADDISON

TRAFFIC DATA:

US 20 (LAKE ST.)
2019 - ADT = 29,300 - 37,400
SPEED LIMIT = 30 - 45 MPH

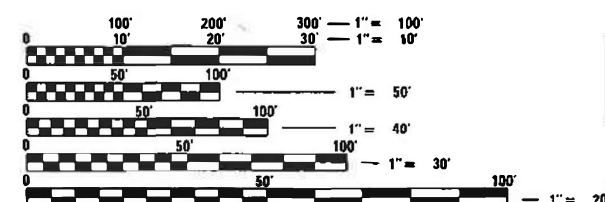
PROPOSED
HIGHWAY PLANS

F.A.U. ROUTE 3537: US 20 (LAKE ST.)
I-355 TO ILLINOIS 83 (KINGERY HWY)
SECTION 2020-104-1
PROJECT: STP-EHOC(074)
CRACK AND JOINT SEALING
DUPAGE COUNTY
C-91-301-20



LOCATION OF SECTION INDICATED THUS: -

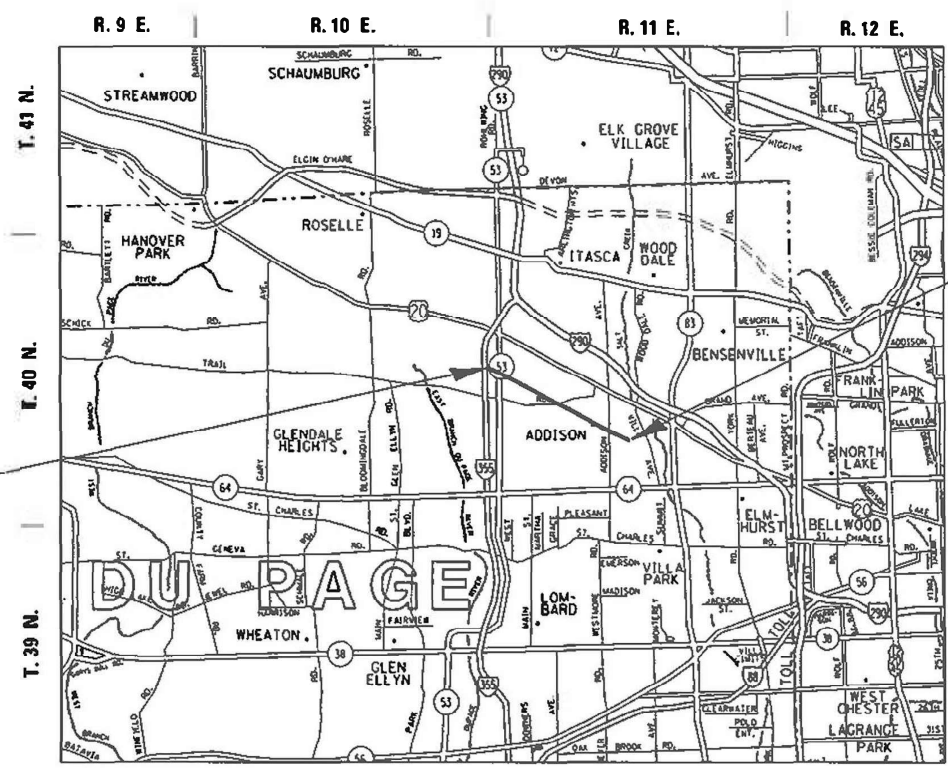
PROJECT ENDS
STA 220 + 42.9



FULL SIZE PLANS HAVE BEEN PREPARED USING STANDARD ENGINEERING SCALES. REDUCED SIZED PLANS WILL NOT CONFORM TO STANDARD SCALES. IN MAKING MEASUREMENTS ON REDUCED PLANS, THE ABOVE SCALES MAY BE USED.

J.U.L.I.E.
JOINT UTILITY LOCATION INFORMATION FOR EXCAVATORS
1-800-892-0123
OR 811

PROJECT BEGINS
STA 12 + 05.7



BLOOMINGDALE AND ADDISON TOWNSHIPS

STATE OF ILLINOIS
DEPARTMENT OF TRANSPORTATION
SUBMITTED February 3, 2021
Dan Wilgreen
REGIONAL ENGINEER
March 19, 2021
Sae A. Elk
ENGINEER OF DESIGN AND ENVIRONMENT
March 19, 2021
Jasmin J. J...
DIRECTOR OF HIGHWAYS PROJECT IMPLEMENTATION 13

PRINTED BY THE AUTHORITY
OF THE STATE OF ILLINOIS

PROJECT ENGINEER: DAN WILGREEN (847) 705-4240
PROJECT MANAGER: FAWAD AQUEEL (847) 705-4247
CONTRACT NO. 62L82

GROSS LENGTH = 20,837.20 FT. = 3.946 MILE
NET LENGTH = 20,837.20 FT. = 3.946 MILE

INDEX OF SHEETS

<u>SHEET NO.</u>	<u>DESCRIPTION</u>
1	TITLE SHEET
2	INDEX OF SHEETS, STATE STANDARDS AND GENERAL NOTES
3	SUMMARY OF QUANTITIES
4-11	PROPOSED PLANS AND PAVEMENT MARKING PLANS
12	CRACK AND JOINT SEALING DETAIL
13	ENTRANCE AND EXIT RAMP CLOSURE DETAILS (TC-08)
14	TRAFFIC CONTROL AND PROTECTION FOR SIDE ROADS, INTERSECTIONS, AND DRIVEWAYS (TC-10)
15-16	MULTI - LANE FREEWAY PAVEMENT MARKING DETAILS (TC-12)
17	DISTRICT ONE TYPICAL PAVEMENT MARKINGS (TC-13)
18	TRAFFIC CONTROL AND PROTECTION AT TURN BAYS (TO REMAIN OPEN TO TRAFFIC) (TC-14)
19	TRAFFIC CONTROL DETAILS FOR EXPRESSWAY SHOULDER CLOSURES AND PARTIAL RAMP CLOSURES (TC-17)
20	ARTERIAL ROAD INFORMATION SIGNING (TC-22)

STANDARDS

000001-08	STANDARD SYMBOLS, ABBREVIATIONS AND PATTERNS
701101-05	OFF-RD OPERATIONS, MULTILANE, 15' (4.5 m) TO 24" (600 mm) FROM PAVEMENT EDGE
701426-09	LANE CLOSURE, MULTILANE, INTERMITTENT OR MOVING OPERATION, FOR SPEEDS > 45 MPH
701427-05	LANE CLOSURE, MULTILANE, INTERMITTENT OR MOVING OPERATIONS, FOR SPEEDS < 40 MPH
701601-09	URBAN LANE CLOSURE, MULTILANE 1W OR 2W WITH NONTRANSVERSABLE MEDIAN
701602-10	URBAN LANE CLOSURE, MULTILANE, 2W WITH BIDIRECTIONAL LEFT TURN LANE
701606-10	URBAN SINGLE LANE CLOSURE, MULTILANE, 2W WITH MOUNTABLE MEDIAN
701701-10	URBAN SINGLE LANE CLOSURE, MULTILANE INTERSECTION
701801-06	SIDEWALK, CORNER OR CROSSWALK CLOSURE
701901-08	TRAFFIC CONTROL DEVICES

GENERAL NOTES

- BEFORE STARTING ANY EXCAVATION, THE CONTRACTOR SHALL CALL "J.U.L.I.E.". AT (800) 892-0123 OR 811 FOR FIELD LOCATIONS OF BURIED ELECTRIC, TELEPHONE AND GAS UTILITIES. 48 HOUR NOTIFICATION IS REQUIRED.
- THE CONTRACTOR SHALL COORDINATE CONSTRUCTION ACTIVITIES WITH UTILITY COMPANIES OF THE VILLAGE OF ADDISON.
- ALL DAMAGE TO EXISTING PAVEMENT MARKINGS OR RAISED REFLECTIVE PAVEMENT MARKERS OUTSIDE THE REMOVAL LINE SHOWN ON THE PLANS SHALL BE REPLACED AT NO ADDITIONAL COST TO THE DEPARTMENT.
- THE CONTRACTOR WILL NOT BE ALLOWED TO SET UP A YARD OR FIELD OFFICE ON STATE PROPERTY WITHOUT WRITTEN PERMISSION FROM THE DEPARTMENT.
- IT SHALL BE THE CONTRACTOR'S RESPONSIBILITY TO VERIFY ALL DIMENSIONS AND CONDITIONS EXISTING IN THE FIELD PRIOR TO CONSTRUCTION AND ORDERING OF MATERIALS.
- THE CONTRACTOR SHALL CONTACT THE DISTRICT ONE TRAFFIC CONTROL SUPERVISOR VIA EMAIL Kalpana.Kannan-Hosadurga@illinois.gov (FOR ARTERIALS) AND (847) 705-4151 (FOR EXPRESSWAYS) A MINIMUM OF 72 HOURS IN ADVANCE OF BEGINNING WORK.
- ALL JOINT AND CRACK FILLING LOCATIONS WILL BE DETERMINATED IN THE FIELD BY THE ENGINEER.
- PREFORMED PLASTIC PAVEMENT MARKING, TYPE B AND MODIFIED URETHANE PAVEMENT MARKING SHALL BE PLACED IMMEDIATELY AFTER CRACK AND SEALER TEMPERATURE HAS COOLED DOWN AND DOES NOT AFFECT THE APPLICATION OF PREFORMED PLASTIC PAVEMENT MARKING, TYPE B AND MODIFIED URETHANE PAVEMENT MARKING.
- THE RESIDENT ENGINEER SHALL CONTACT WALTER CZARNY AREA TRAFFIC FIELD ENGINEER AT WALTER.CZARNY@ILLINOIS.GOV A MINIMUM OF TWO (2) WEEKS PRIOR TO THE PLACEMENT OF PERMANENT PAVEMENT MARKINGS.
- THE CONTRACTOR SHALL BE REQUIRED TO PROVIDE ACCESS TO ABUTTING PROPERTY AT ALL TIMES DURING THE CONSTRUCTION OF THIS PROJECT.
- DO NOT SCALE PLANS FOR CONSTRUCTION DIMENSIONS.

**STATE OF ILLINOIS
DEPARTMENT OF TRANSPORTATION**

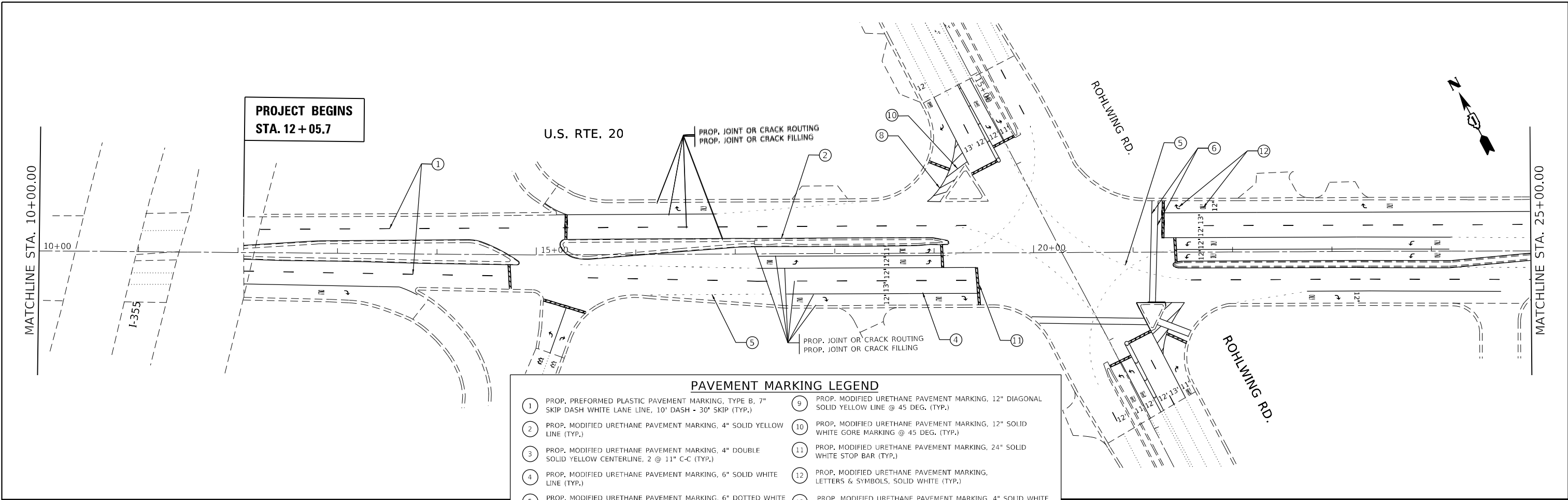
**INDEX OF SHEETS, STATE STANDARDS AND GENERAL NOTES
US 20 (LAKE ST) (I-355 TO IL ROUTE 83 (KINGERY HWY))**

SCALE: SHEET OF SHEETS STA. TO STA.

F.A.U. RTE.	SECTION	COUNTY	TOTAL SHEETS	SHEET NO.
3537	2020-104-I	DUPAGE	20	2
			CONTRACT NO. 62L82	
		ILLINOIS	FED. AID PROJECT	

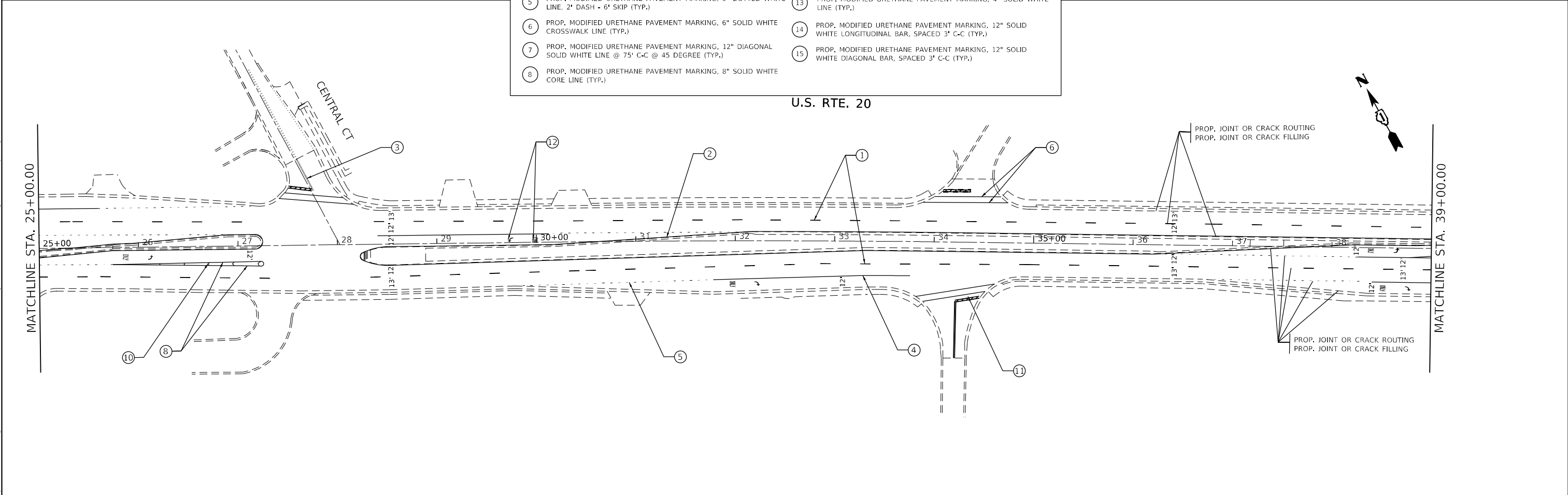
SUMMARY OF QUANTITIES			TOTAL QUANTITIES URBAN	CONSTRUCTION TYPE CODE					SUMMARY OF QUANTITIES			TOTAL QUANTITIES URBAN	CONSTRUCTION TYPE CODE					
CODE NO	ITEM	UNIT		80% FED 20% STATE 0005						CODE NO	ITEM		UNIT	80% FED 20% STATE 0005				
45200100	JOINT OR CRACK ROUTING (PC CONCRETE PAVEMENT AND SHOULDER)	FOOT	197798	197798					* 78009006	MODIFIED URETHANE PAVEMENT MARKING - LINE 6"	FOOT	22676	22676					
45200300	JOINT OR CRACK FILLING	POUND	56511	56511					* 78009008	MODIFIED URETHANE PAVEMENT MARKING - LINE 8"	FOOT	6071	6071					
67000400	ENGINEER'S FIELD OFFICE, TYPE A	CAL MO	12	12					* 78009012	MODIFIED URETHANE PAVEMENT MARKING - LINE 12"	FOOT	2999	2999					
67100100	MOBILIZATION	L SUM	1	1														
70102625	TRAFFIC CONTROL AND PROTECTION, STANDARD 701606	L SUM	1	1					* 78009024	MODIFIED URETHANE PAVEMENT MARKING - LINE 24"	FOOT	2935	2935					
70102630	TRAFFIC CONTROL AND PROTECTION, STANDARD 701601	L SUM	1	1					* X2700003	GROOVING FOR RECESSED PAVEMENT MARKING 8"	FOOT	9282	9282					
70102632	TRAFFIC CONTROL AND PROTECTION, STANDARD 701602	L SUM	1	1					* X2700004	PREFORMED PLASTIC PAVEMENT MARKING, TYPE B - LINE 7"	FOOT	9282	9282					
70102635	TRAFFIC CONTROL AND PROTECTION, STANDARD 701701	L SUM	1	1					X7011015	TRAFFIC CONTROL AND PROTECTION (EXPRESSWAYS)	L SUM	1	1					
70102640	TRAFFIC CONTROL AND PROTECTION, STANDARD 701801	L SUM	1	1					Z0030850	TEMPORARY INFORMATION SIGNING	SO FT	51.4	51.4					
* 78009000	MODIFIED URETHANE PAVEMENT MARKING - LETTERS AND SYMBOLS	SO FT	4940	4940														
* 78009004	MODIFIED URETHANE PAVEMENT MARKING - LINE 4"	FOOT	47772	47772														
	* SPECIALTY ITEMS																	

REV-SEP



PAVEMENT MARKING LEGEND

① PROP. PREFORMED PLASTIC PAVEMENT MARKING, TYPE B, 7" SKIP DASH WHITE LANE LINE, 10' DASH - 30' SKIP (TYP.)	⑨ PROP. MODIFIED URETHANE PAVEMENT MARKING, 12" DIAGONAL SOLID YELLOW LINE @ 45 DEG. (TYP.)
② PROP. MODIFIED URETHANE PAVEMENT MARKING, 4" SOLID YELLOW LINE (TYP.)	⑩ PROP. MODIFIED URETHANE PAVEMENT MARKING, 12" SOLID WHITE GORE MARKING @ 45 DEG. (TYP.)
③ PROP. MODIFIED URETHANE PAVEMENT MARKING, 4" DOUBLE SOLID YELLOW CENTERLINE, 2 @ 11" C-C (TYP.)	⑪ PROP. MODIFIED URETHANE PAVEMENT MARKING, 24" SOLID WHITE STOP BAR (TYP.)
④ PROP. MODIFIED URETHANE PAVEMENT MARKING, 6" SOLID WHITE LINE (TYP.)	⑫ PROP. MODIFIED URETHANE PAVEMENT MARKING, LETTERS & SYMBOLS, SOLID WHITE (TYP.)
⑤ PROP. MODIFIED URETHANE PAVEMENT MARKING, 6" DOTTED WHITE LINE, 2" DASH - 6" SKIP (TYP.)	⑬ PROP. MODIFIED URETHANE PAVEMENT MARKING, 4" SOLID WHITE LINE (TYP.)
⑥ PROP. MODIFIED URETHANE PAVEMENT MARKING, 6" SOLID WHITE CROSSWALK LINE (TYP.)	⑭ PROP. MODIFIED URETHANE PAVEMENT MARKING, 12" SOLID WHITE LONGITUDINAL BAR, SPACED 3' C-C (TYP.)
⑦ PROP. MODIFIED URETHANE PAVEMENT MARKING, 12" DIAGONAL SOLID WHITE LINE @ 75° C-C @ 45 DEGREE (TYP.)	⑮ PROP. MODIFIED URETHANE PAVEMENT MARKING, 12" SOLID WHITE DIAGONAL BAR, SPACED 3' C-C (TYP.)
⑧ PROP. MODIFIED URETHANE PAVEMENT MARKING, 8" SOLID WHITE CORE LINE (TYP.)	



MODEL: Default
 FILE NAME: p:\data\m3000m.dwg
 PROJECT: I-59020\CADDData\Design\150320-sh-4-lb-001.dwg
 PROJECT: I-59020\CADDData\Design\150320-sh-4-lb-001.dwg

USER NAME = kalorm	DESIGNED -	REVISED -
PLOT SCALE = 100,0000' / in.	DRAWN -	REVISED -
PLOT DATE = 12/11/2020	CHECKED -	REVISED -
	DATE -	REVISED -

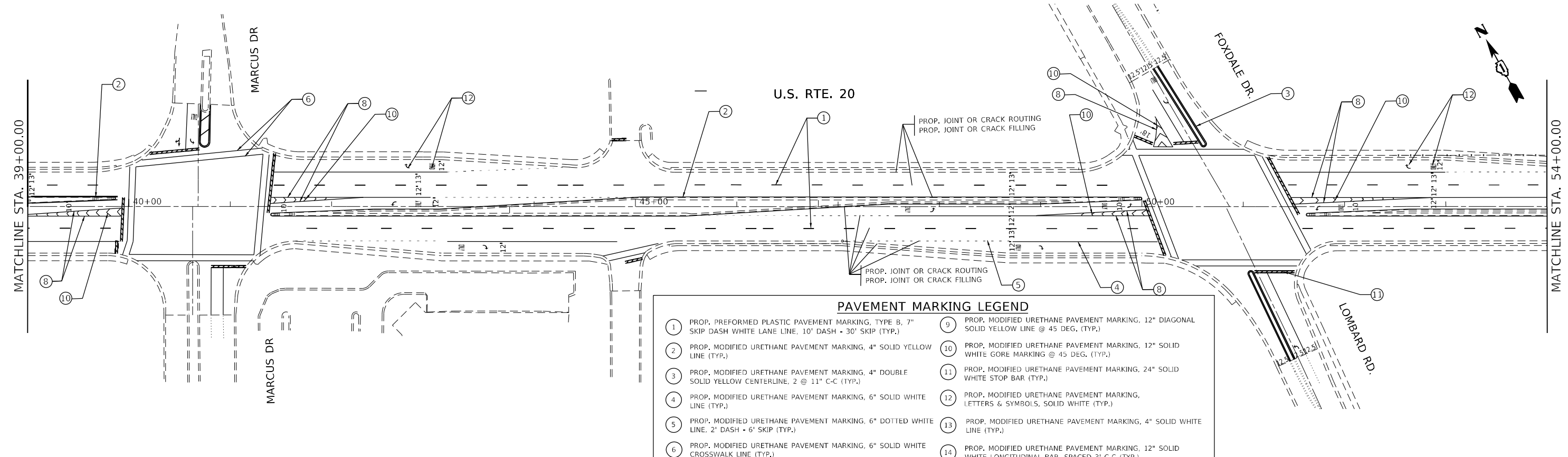
STATE OF ILLINOIS
DEPARTMENT OF TRANSPORTATION

ROADWAY PLAN
US 20 (LAKE ST) (I-355 TO IL ROUTE 83 (KINGERY HWY))

SCALE: SHEET OF SHEETS STA. TO STA.

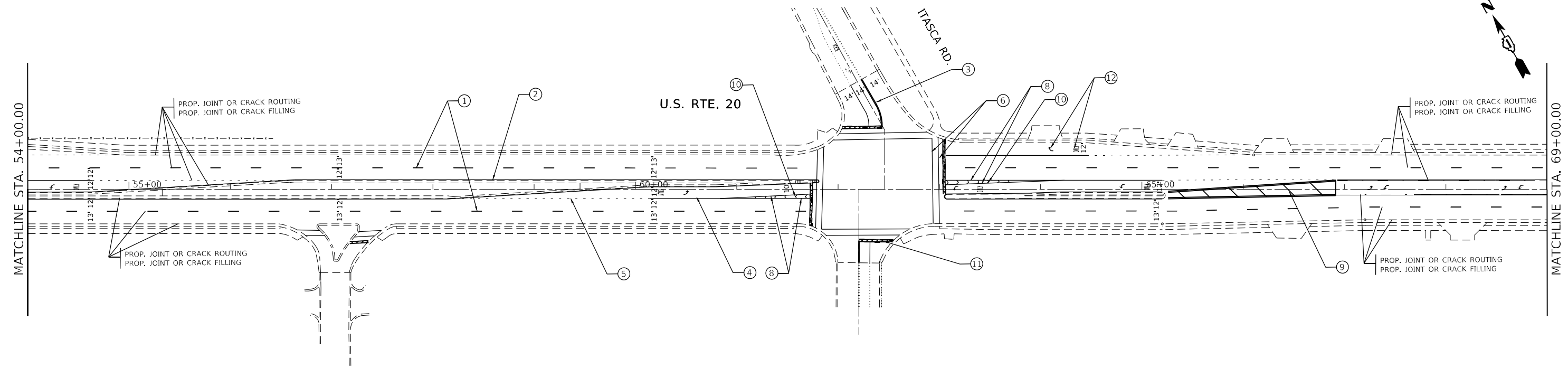
F.A.U. RTE. 3537	SECTION 2020-104-I	COUNTY DUPAGE	TOTAL SHEETS 20	SHEET NO. 4
CONTRACT NO. 62L82			ILLINOIS FED. AID PROJECT	

MODEL: Default
 FILE NAME: p:\data\room\dot\illinois\dot\Office\Dist\refc_1\Projects\150320\CADD\Drawings\Design\150320-sh-4-lb-001.dwg



PAVEMENT MARKING LEGEND

1 PROP. PREFORMED PLASTIC PAVEMENT MARKING, TYPE B, 7" SKIP DASH WHITE LANE LINE, 10' DASH - 30' SKIP (TYP.)	9 PROP. MODIFIED URETHANE PAVEMENT MARKING, 12" DIAGONAL SOLID YELLOW LINE @ 45 DEG. (TYP.)
2 PROP. MODIFIED URETHANE PAVEMENT MARKING, 4" SOLID YELLOW LINE (TYP.)	10 PROP. MODIFIED URETHANE PAVEMENT MARKING, 12" SOLID WHITE GORE MARKING @ 45 DEG. (TYP.)
3 PROP. MODIFIED URETHANE PAVEMENT MARKING, 4" DOUBLE SOLID YELLOW CENTERLINE, 2 @ 11" C-C (TYP.)	11 PROP. MODIFIED URETHANE PAVEMENT MARKING, 24" SOLID WHITE STOP BAR (TYP.)
4 PROP. MODIFIED URETHANE PAVEMENT MARKING, 6" SOLID WHITE LINE (TYP.)	12 PROP. MODIFIED URETHANE PAVEMENT MARKING, LETTERS & SYMBOLS, SOLID WHITE (TYP.)
5 PROP. MODIFIED URETHANE PAVEMENT MARKING, 6" DOTTED WHITE LINE, 2' DASH - 6' SKIP (TYP.)	13 PROP. MODIFIED URETHANE PAVEMENT MARKING, 4" SOLID WHITE LINE (TYP.)
6 PROP. MODIFIED URETHANE PAVEMENT MARKING, 6" SOLID WHITE CROSSWALK LINE (TYP.)	14 PROP. MODIFIED URETHANE PAVEMENT MARKING, 12" SOLID WHITE LONGITUDINAL BAR, SPACED 3' C-C (TYP.)
7 PROP. MODIFIED URETHANE PAVEMENT MARKING, 12" DIAGONAL SOLID WHITE LINE @ 75° C-C @ 45 DEGREE (TYP.)	15 PROP. MODIFIED URETHANE PAVEMENT MARKING, 12" SOLID WHITE DIAGONAL BAR, SPACED 3' C-C (TYP.)
8 PROP. MODIFIED URETHANE PAVEMENT MARKING, 8" SOLID WHITE CORE LINE (TYP.)	



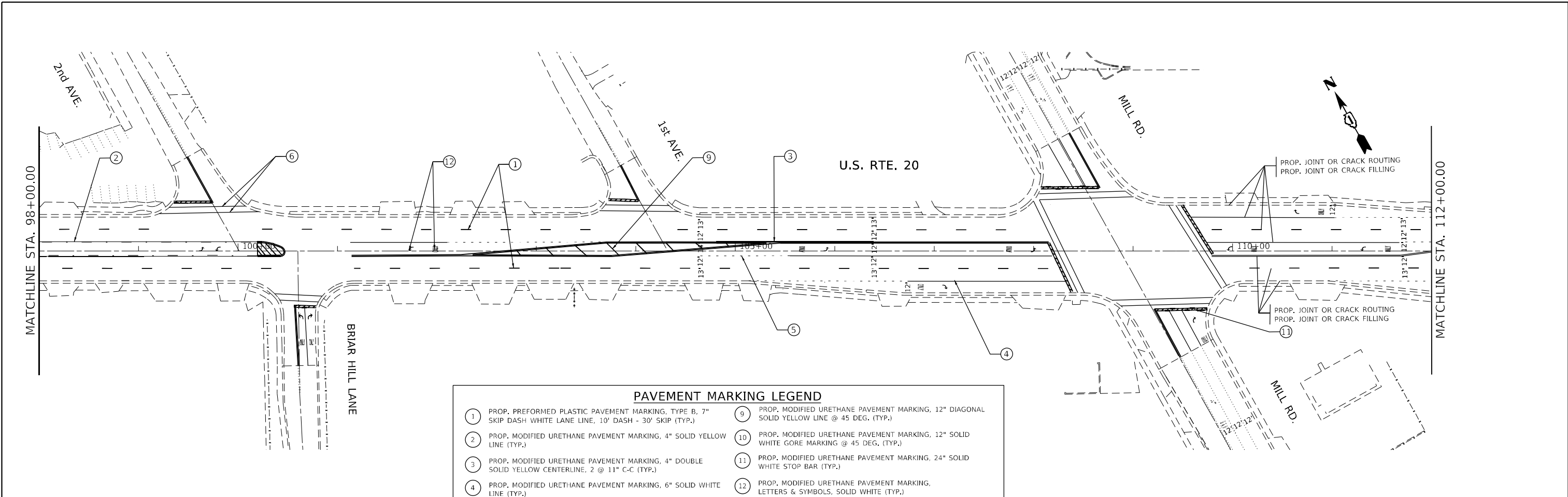
USER NAME = kalorm	DESIGNED -	REVISED -
	DRAWN -	REVISED -
PLOT SCALE = 100,0000' / in.	CHECKED -	REVISED -
PLOT DATE = 12/11/2020	DATE -	REVISED -

**STATE OF ILLINOIS
 DEPARTMENT OF TRANSPORTATION**

ROADWAY PLAN
US 20 (LAKE ST) (I-355 TO IL ROUTE 83 (KINGERY HWY))

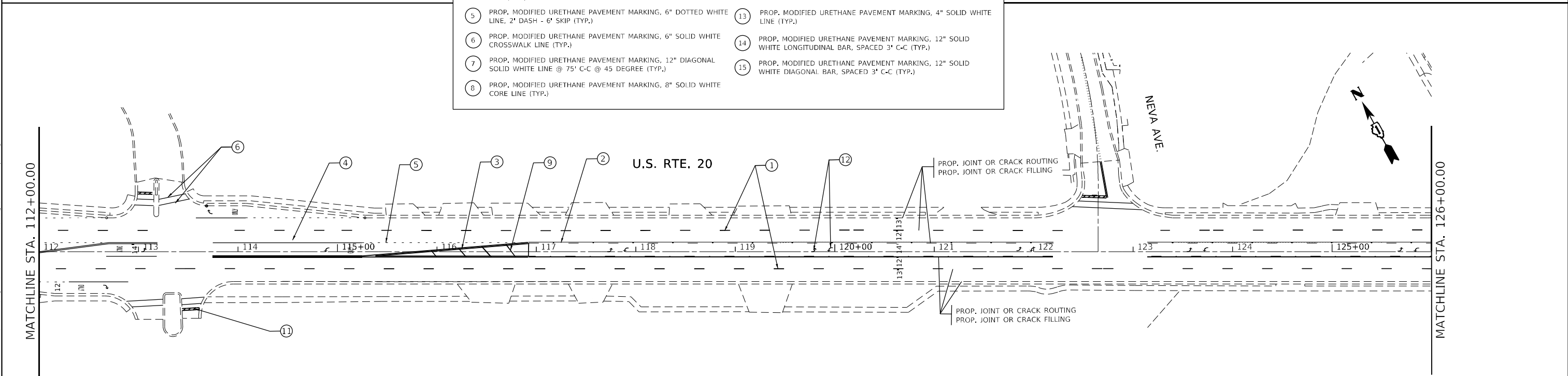
SCALE: SHEET OF SHEETS STA. TO STA.

F.A.U. RTE.	SECTION	COUNTY	TOTAL SHEETS	SHEET NO.
3537	2020-104-I	DUPAGE	20	5
CONTRACT NO. 62L82			ILLINOIS FED. AID PROJECT	



PAVEMENT MARKING LEGEND

① PROP. PREFORMED PLASTIC PAVEMENT MARKING, TYPE B, 7" SKIP DASH WHITE LANE LINE, 10' DASH - 30' SKIP (TYP.)	⑨ PROP. MODIFIED URETHANE PAVEMENT MARKING, 12" DIAGONAL SOLID YELLOW LINE @ 45 DEG. (TYP.)
② PROP. MODIFIED URETHANE PAVEMENT MARKING, 4" SOLID YELLOW LINE (TYP.)	⑩ PROP. MODIFIED URETHANE PAVEMENT MARKING, 12" SOLID WHITE GORE MARKING @ 45 DEG. (TYP.)
③ PROP. MODIFIED URETHANE PAVEMENT MARKING, 4" DOUBLE SOLID YELLOW CENTERLINE, 2 @ 11" C-C (TYP.)	⑪ PROP. MODIFIED URETHANE PAVEMENT MARKING, 24" SOLID WHITE STOP BAR (TYP.)
④ PROP. MODIFIED URETHANE PAVEMENT MARKING, 6" SOLID WHITE LINE (TYP.)	⑫ PROP. MODIFIED URETHANE PAVEMENT MARKING, LETTERS & SYMBOLS, SOLID WHITE (TYP.)
⑤ PROP. MODIFIED URETHANE PAVEMENT MARKING, 6" DOTTED WHITE LINE, 2" DASH - 6" SKIP (TYP.)	⑬ PROP. MODIFIED URETHANE PAVEMENT MARKING, 4" SOLID WHITE LINE (TYP.)
⑥ PROP. MODIFIED URETHANE PAVEMENT MARKING, 6" SOLID WHITE CROSSWALK LINE (TYP.)	⑭ PROP. MODIFIED URETHANE PAVEMENT MARKING, 12" SOLID WHITE LONGITUDINAL BAR, SPACED 3' C-C (TYP.)
⑦ PROP. MODIFIED URETHANE PAVEMENT MARKING, 12" DIAGONAL SOLID WHITE LINE @ 75° C-C @ 45 DEGREE (TYP.)	⑮ PROP. MODIFIED URETHANE PAVEMENT MARKING, 12" SOLID WHITE DIAGONAL BAR, SPACED 3' C-C (TYP.)
⑧ PROP. MODIFIED URETHANE PAVEMENT MARKING, 8" SOLID WHITE CORE LINE (TYP.)	



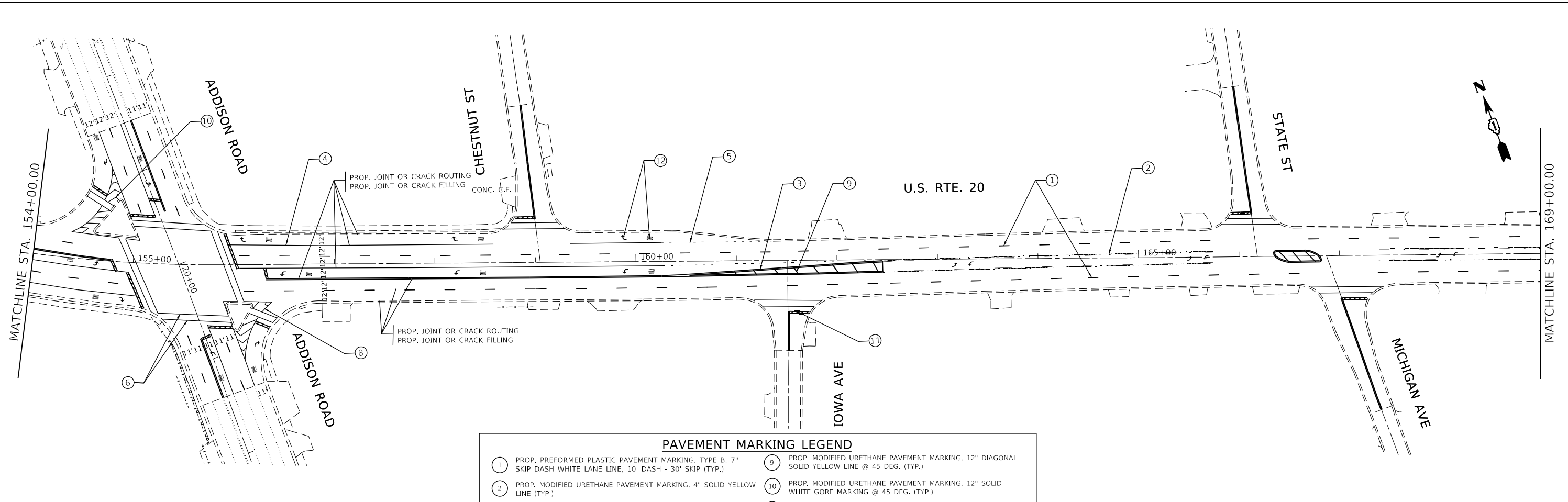
MODEL: Default
 FILE NAME: p:\pub\lhamrmon.dwg
 PROJECT: I:\Projects\150220\CADD\Drawings\150220-20-sh-4-lb-001.dwg
 USER: kalam

USER NAME = kalam	DESIGNED -	REVISED -
PLOT SCALE = 100,0000' / in.	DRAWN -	REVISED -
PLOT DATE = 12/11/2020	CHECKED -	REVISED -
	DATE -	REVISED -

**STATE OF ILLINOIS
DEPARTMENT OF TRANSPORTATION**

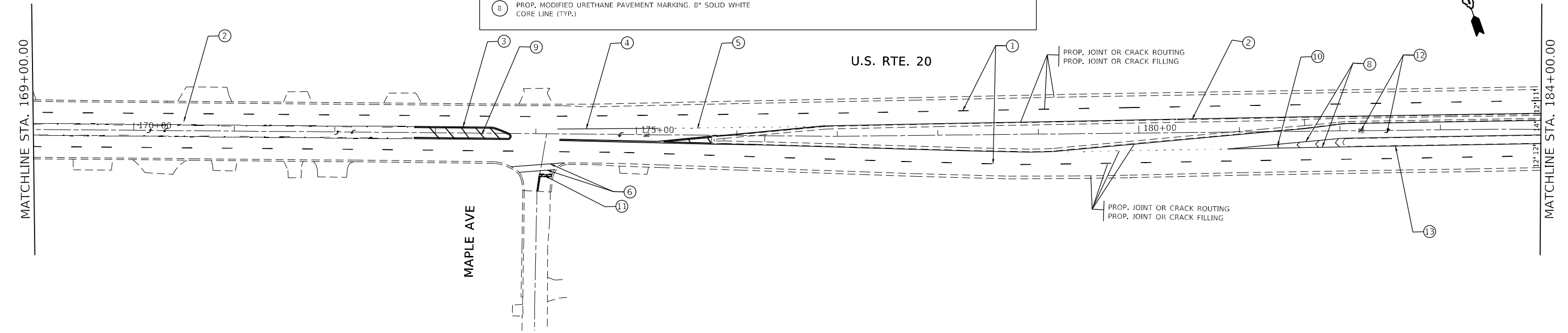
ROADWAY PLAN	
US 20 (LAKE ST) (I-355 TO IL ROUTE 83 (KINGERY HWY))	
SCALE:	SHEET OF SHEETS STA. TO STA.

F.A.U. RTE.	SECTION	COUNTY	TOTAL SHEETS	SHEET NO.
3537	2020-104-I	DUPAGE	20	7
CONTRACT NO. 62L82			ILLINOIS FED. AID PROJECT	



PAVEMENT MARKING LEGEND

① PROP. PREFORMED PLASTIC PAVEMENT MARKING, TYPE B, 7" SKIP DASH WHITE LANE LINE, 10" DASH - 30" SKIP (TYP.)	⑨ PROP. MODIFIED URETHANE PAVEMENT MARKING, 12" DIAGONAL SOLID YELLOW LINE @ 45 DEG. (TYP.)
② PROP. MODIFIED URETHANE PAVEMENT MARKING, 4" SOLID YELLOW LINE (TYP.)	⑩ PROP. MODIFIED URETHANE PAVEMENT MARKING, 12" SOLID WHITE GORE MARKING @ 45 DEG. (TYP.)
③ PROP. MODIFIED URETHANE PAVEMENT MARKING, 4" DOUBLE SOLID YELLOW CENTERLINE, 2 @ 11" C-C (TYP.)	⑪ PROP. MODIFIED URETHANE PAVEMENT MARKING, 24" SOLID WHITE STOP BAR (TYP.)
④ PROP. MODIFIED URETHANE PAVEMENT MARKING, 6" SOLID WHITE LINE (TYP.)	⑫ PROP. MODIFIED URETHANE PAVEMENT MARKING, LETTERS & SYMBOLS, SOLID WHITE (TYP.)
⑤ PROP. MODIFIED URETHANE PAVEMENT MARKING, 6" DOTTED WHITE LINE, 2' DASH - 6' SKIP (TYP.)	⑬ PROP. MODIFIED URETHANE PAVEMENT MARKING, 4" SOLID WHITE LINE (TYP.)
⑥ PROP. MODIFIED URETHANE PAVEMENT MARKING, 6" SOLID WHITE CROSSWALK LINE (TYP.)	⑭ PROP. MODIFIED URETHANE PAVEMENT MARKING, 12" SOLID WHITE LONGITUDINAL BAR, SPACED 3' C-C (TYP.)
⑦ PROP. MODIFIED URETHANE PAVEMENT MARKING, 12" DIAGONAL SOLID WHITE LINE @ 75' C-C @ 45 DEGREE (TYP.)	⑮ PROP. MODIFIED URETHANE PAVEMENT MARKING, 12" SOLID WHITE DIAGONAL BAR, SPACED 3' C-C (TYP.)
⑧ PROP. MODIFIED URETHANE PAVEMENT MARKING, 8" SOLID WHITE CORE LINE (TYP.)	



MODEL: Default
 FILE NAME: p:\data\room\dot\illinois.gov\PWIDOT\Documents\DOT_Office\Drawings\1\Projects\150220\CADD\Drawings\Design\150220-sh-4-lb-001.dwg
 PROJECT: 150220

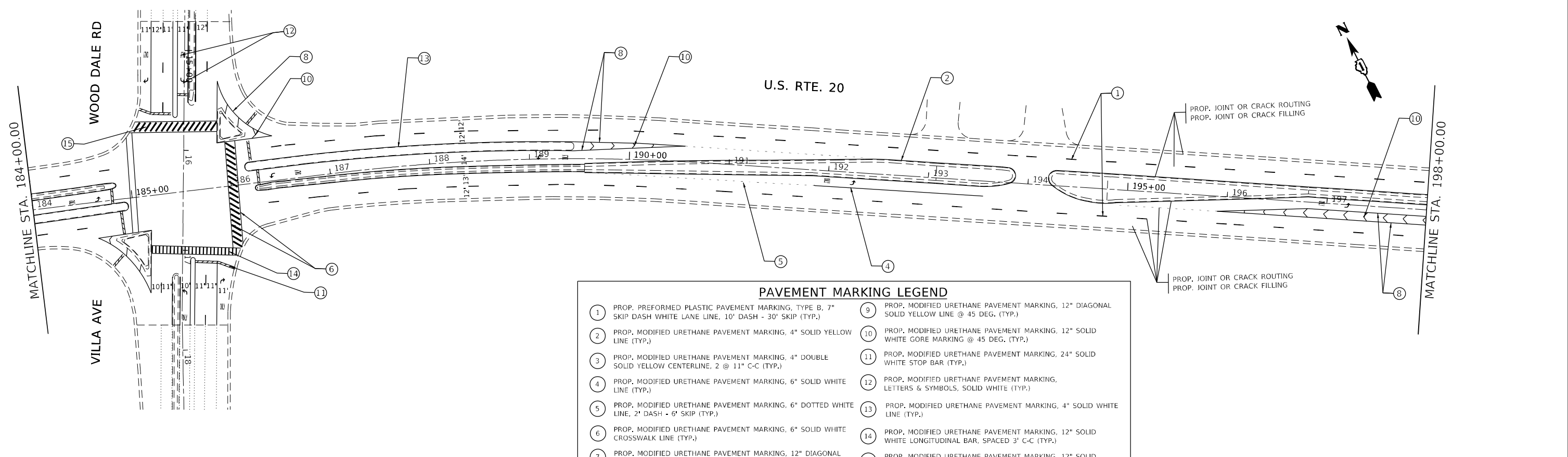
USER NAME = kalorm	DESIGNED -	REVISED -
	DRAWN -	REVISED -
PLOT SCALE = 100,0000' / in.	CHECKED -	REVISED -
PLOT DATE = 12/11/2020	DATE -	REVISED -

**STATE OF ILLINOIS
DEPARTMENT OF TRANSPORTATION**

ROADWAY PLAN			
US 20 (LAKE ST) (I-355 TO IL ROUTE 83 (KINGERY HWY))			
SCALE:	SHEET	OF SHEETS	STA. TO STA.

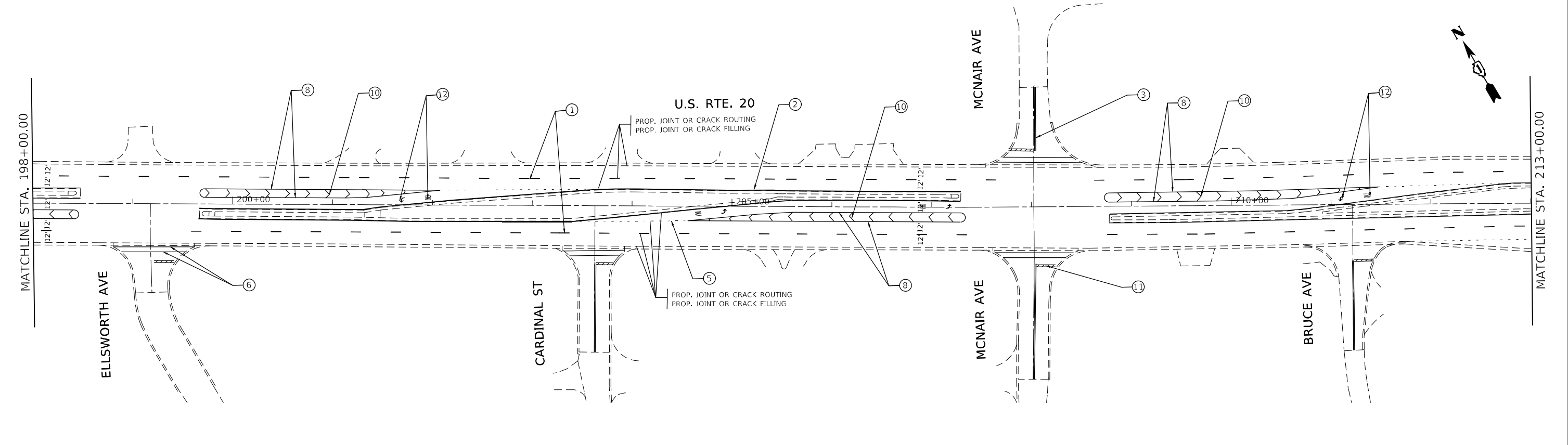
F.A.U. RTE.	SECTION	COUNTY	TOTAL SHEETS	SHEET NO.
3537	2020-104-I	DUPAGE	20	9
CONTRACT NO. 62L82				
ILLINOIS FED. AID PROJECT				

MODEL: Default
 FILE NAME: p:\pub\mroom.dwg
 PROJECT: I-59020\CaddData\Design\150320-sh-4-bn.dwg
 PROJECT: I-59020\CaddData\Design\150320-sh-4-bn.dwg



PAVEMENT MARKING LEGEND

① PROP. PREFORMED PLASTIC PAVEMENT MARKING, TYPE B, 7" SKIP DASH WHITE LANE LINE, 10' DASH - 30' SKIP (TYP.)	⑨ PROP. MODIFIED URETHANE PAVEMENT MARKING, 12" DIAGONAL SOLID YELLOW LINE @ 45 DEG. (TYP.)
② PROP. MODIFIED URETHANE PAVEMENT MARKING, 4" SOLID YELLOW LINE (TYP.)	⑩ PROP. MODIFIED URETHANE PAVEMENT MARKING, 12" SOLID WHITE GORE MARKING @ 45 DEG. (TYP.)
③ PROP. MODIFIED URETHANE PAVEMENT MARKING, 4" DOUBLE SOLID YELLOW CENTERLINE, 2 @ 11" C-C (TYP.)	⑪ PROP. MODIFIED URETHANE PAVEMENT MARKING, 24" SOLID WHITE STOP BAR (TYP.)
④ PROP. MODIFIED URETHANE PAVEMENT MARKING, 6" SOLID WHITE LINE (TYP.)	⑫ PROP. MODIFIED URETHANE PAVEMENT MARKING, LETTERS & SYMBOLS, SOLID WHITE (TYP.)
⑤ PROP. MODIFIED URETHANE PAVEMENT MARKING, 6" DOTTED WHITE LINE, 2" DASH - 6' SKIP (TYP.)	⑬ PROP. MODIFIED URETHANE PAVEMENT MARKING, 4" SOLID WHITE LINE (TYP.)
⑥ PROP. MODIFIED URETHANE PAVEMENT MARKING, 6" SOLID WHITE CROSSWALK LINE (TYP.)	⑭ PROP. MODIFIED URETHANE PAVEMENT MARKING, 12" SOLID WHITE LONGITUDINAL BAR, SPACED 3' C-C (TYP.)
⑦ PROP. MODIFIED URETHANE PAVEMENT MARKING, 12" DIAGONAL SOLID WHITE LINE @ 75° C-C @ 45 DEGREE (TYP.)	⑮ PROP. MODIFIED URETHANE PAVEMENT MARKING, 12" SOLID WHITE DIAGONAL BAR, SPACED 3' C-C (TYP.)
⑧ PROP. MODIFIED URETHANE PAVEMENT MARKING, 8" SOLID WHITE CORE LINE (TYP.)	



USER NAME = kalorm	DESIGNED -	REVISED -
PLOT SCALE = 100,0000' / in.	DRAWN -	REVISED -
PLOT DATE = 12/11/2020	CHECKED -	REVISED -
	DATE -	REVISED -

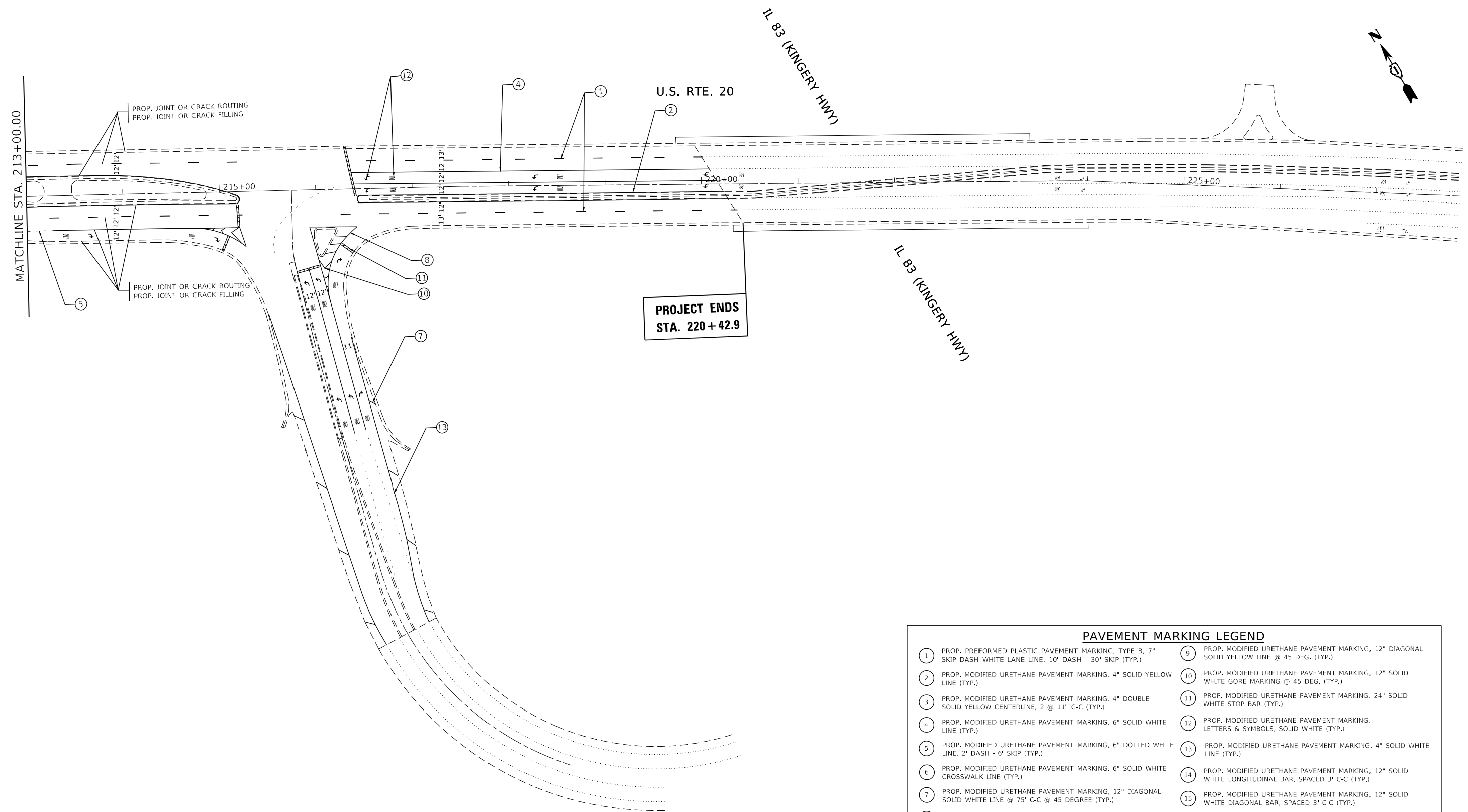
**STATE OF ILLINOIS
DEPARTMENT OF TRANSPORTATION**

ROADWAY PLAN
US 20 (LAKE ST) (I-355 TO IL ROUTE 83 (KINGERY HWY))

SCALE: SHEET OF SHEETS STA. TO STA.

F.A.U. RTE. 3537	SECTION 2020-104-I	COUNTY DUPAGE	TOTAL SHEETS 20	SHEET NO. 10
ILLINOIS FED. AID PROJECT			CONTRACT NO. 62L82	

MODEL: Default
 FILE NAME: p:\data\m3000m.dwg
 PROJECT: I:\Projects\190320\CADD\Drawings\190320-214-01-01.dwg
 USER: kalm
 DATE: 12/11/2020



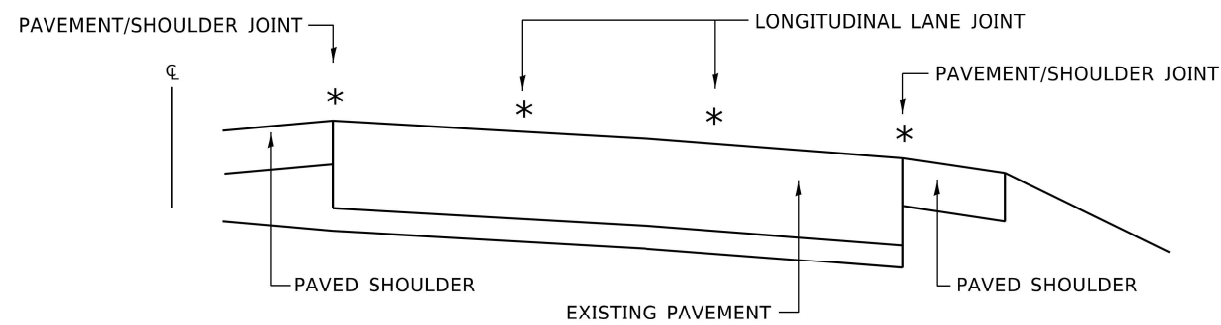
PAVEMENT MARKING LEGEND	
1	PROP. PREFORMED PLASTIC PAVEMENT MARKING, TYPE B, 7" SKIP DASH WHITE LANE LINE, 10' DASH - 30' SKIP (TYP.)
2	PROP. MODIFIED URETHANE PAVEMENT MARKING, 4" SOLID YELLOW LINE (TYP.)
3	PROP. MODIFIED URETHANE PAVEMENT MARKING, 4" DOUBLE SOLID YELLOW CENTERLINE, 2 @ 11" C-C (TYP.)
4	PROP. MODIFIED URETHANE PAVEMENT MARKING, 6" SOLID WHITE LINE (TYP.)
5	PROP. MODIFIED URETHANE PAVEMENT MARKING, 6" DOTTED WHITE LINE, 2' DASH - 6' SKIP (TYP.)
6	PROP. MODIFIED URETHANE PAVEMENT MARKING, 6" SOLID WHITE CROSSWALK LINE (TYP.)
7	PROP. MODIFIED URETHANE PAVEMENT MARKING, 12" DIAGONAL SOLID WHITE LINE @ 75° C-C @ 45 DEGREE (TYP.)
8	PROP. MODIFIED URETHANE PAVEMENT MARKING, 8" SOLID WHITE CORE LINE (TYP.)
9	PROP. MODIFIED URETHANE PAVEMENT MARKING, 12" DIAGONAL SOLID YELLOW LINE @ 45 DEG. (TYP.)
10	PROP. MODIFIED URETHANE PAVEMENT MARKING, 12" SOLID WHITE GORE MARKING @ 45 DEG. (TYP.)
11	PROP. MODIFIED URETHANE PAVEMENT MARKING, 24" SOLID WHITE STOP BAR (TYP.)
12	PROP. MODIFIED URETHANE PAVEMENT MARKING, LETTERS & SYMBOLS, SOLID WHITE (TYP.)
13	PROP. MODIFIED URETHANE PAVEMENT MARKING, 4" SOLID WHITE LINE (TYP.)
14	PROP. MODIFIED URETHANE PAVEMENT MARKING, 12" SOLID WHITE LONGITUDINAL BAR, SPACED 3' C-C (TYP.)
15	PROP. MODIFIED URETHANE PAVEMENT MARKING, 12" SOLID WHITE DIAGONAL BAR, SPACED 3' C-C (TYP.)

USER NAME = kalm	DESIGNED -	REVISED -
DRAWN -	REVISED -	
PLOT SCALE = 100,0000' / in.	CHECKED -	REVISED -
PLOT DATE = 12/11/2020	DATE -	REVISED -

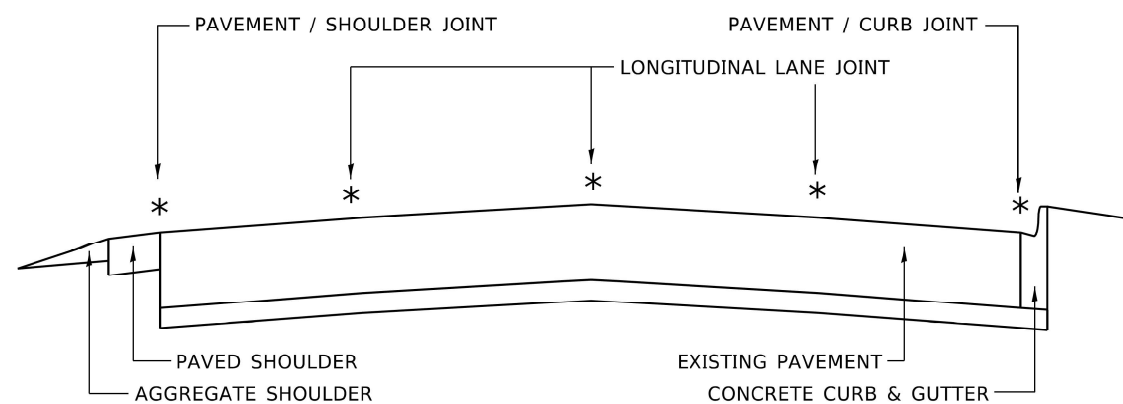
STATE OF ILLINOIS
DEPARTMENT OF TRANSPORTATION

ROADWAY PLAN			
US 20 (LAKE ST) (I-355 TO IL ROUTE 83 (KINGERY HWY))			
SCALE:	SHEET	OF SHEETS	STA. TO STA.

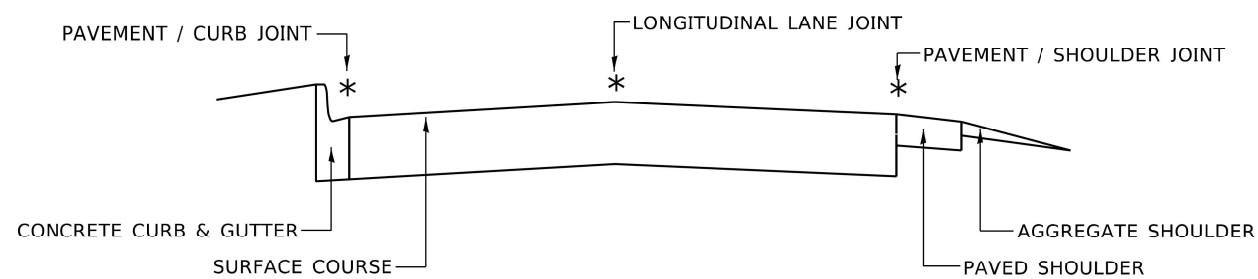
F.A.U. RTE.	SECTION	COUNTY	TOTAL SHEETS	SHEET NO.
3537	2020-104-I	DUPAGE	20	11
CONTRACT NO. 62L82				
ILLINOIS FED. AID PROJECT				



MULTI-LANE DIVIDED PAVEMENT



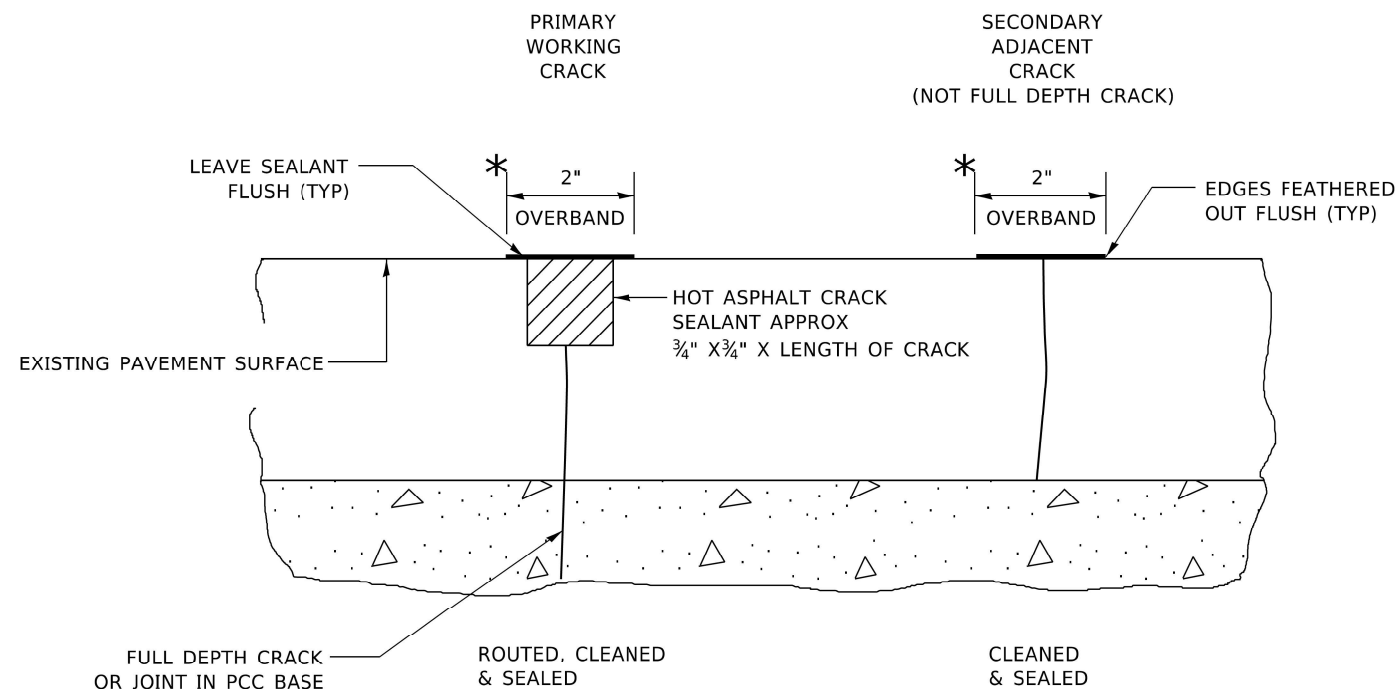
MULTI-LANE UNDIVIDED PAVEMENT



TWO-LANE PAVEMENT

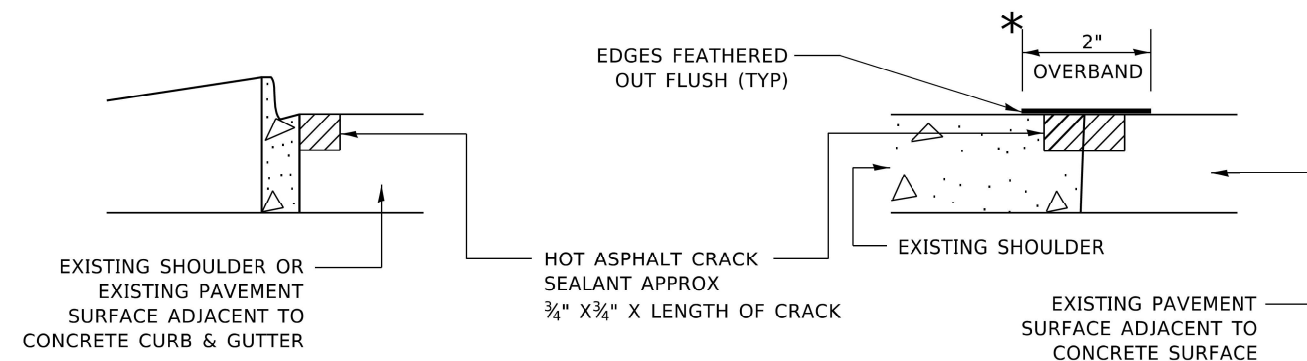
* PROPOSED LONGITUDINAL CRACK ROUTING (PAVEMENT) & CRACK FILLING LOCATIONS

**GENERAL EXISTING TYPICAL SECTIONS
(APPLIES TO HMA AND PCC PAVEMENTS)**



* IN ALL LOCATIONS WHERE THE LONGITUDINAL CRACK CONFLICTS WITH EXISTING PAVEMENT MARKINGS (EITHER EDGE LINE OR LANE LINE) THE CRACK SHALL BE ROUTED & THE RESULTING RESERVOIR FILLED WITH SEALANT. ALL DAMAGES TO EXISTING RAISED REFLECTIVE PAVEMENT MARKERS SHALL BE REPLACED AT THE EXPENSE OF THE CONTRACTOR. ALL EXISTING PAVEMENT MARKINGS WITHIN THE PROJECT LIMITS SHALL BE RESTORED WITH MODIFIED URETHANE PAVEMENT MARKINGS.

LONGITUDINAL JOINT



CRACK & JOINT SEALING DETAIL

MODEL: Default
FILE: \\state-gov\pub\hrcam\dot.illinois.gov\PIWDOT\Documents\DOT_Offices\District_1\Projects\Dist1\507231\CAD\Drawn\CAD\sheet3a.dwg

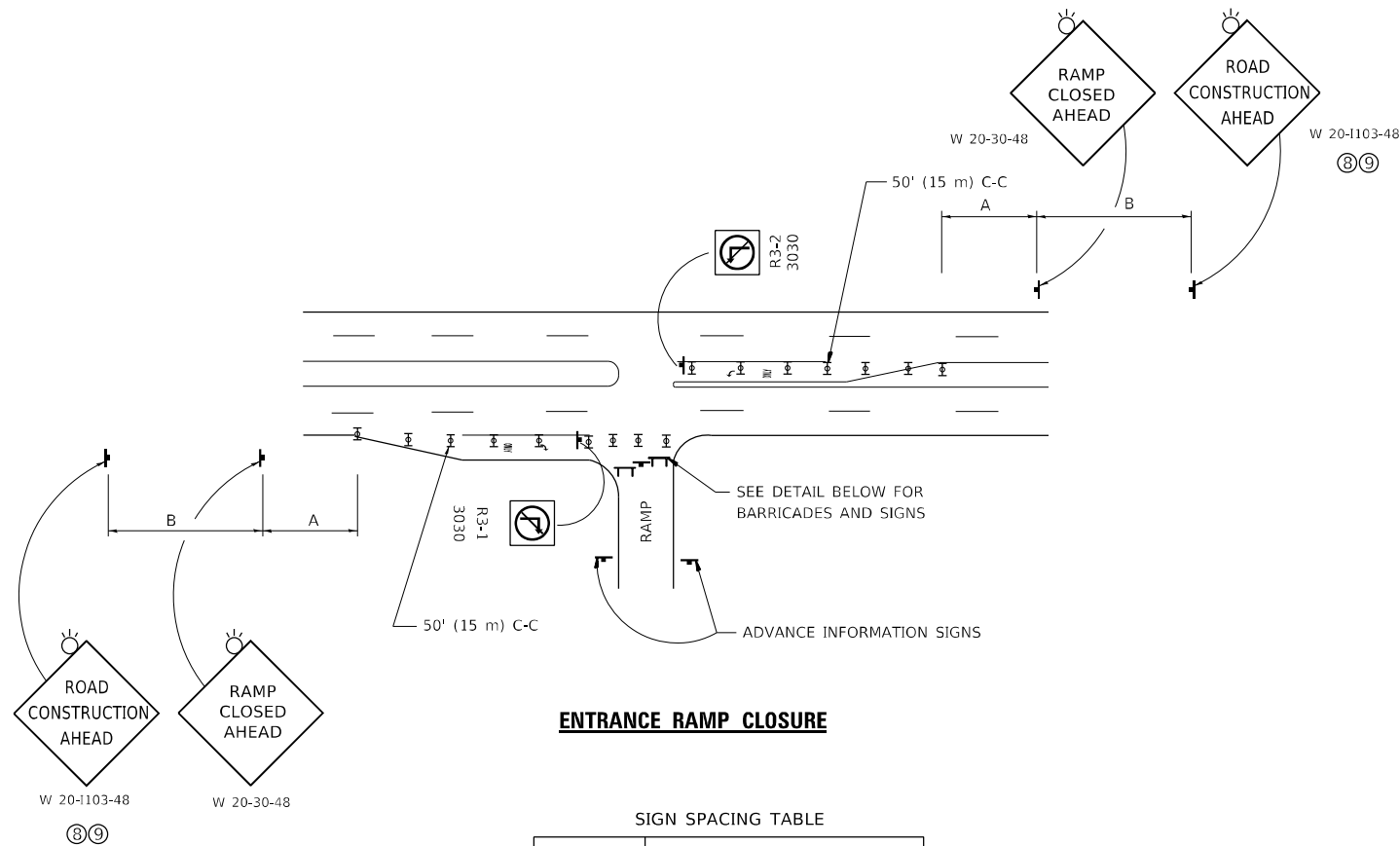
USER NAME = leysa	DESIGNED - F. Aqueel / A. Midy	REVISED -
PLOT SCALE = 100.0000' / in.	DRAWN -	REVISED -
PLOT DATE = 10/7/2020	CHECKED -	REVISED -
	DATE - 10/08/2020	REVISED -

**STATE OF ILLINOIS
DEPARTMENT OF TRANSPORTATION**

CRACK & JOINT SEALING DETAIL (PD-11)

SCALE: SHEET OF SHEETS STA. TO STA.

F.A.U. RTE.	SECTION	COUNTY	TOTAL SHEETS	SHEET NO.
3537	2020-104-I	DUPAGE	20	12
CONTRACT NO. 62L82				
ILLINOIS FED. AID PROJECT				

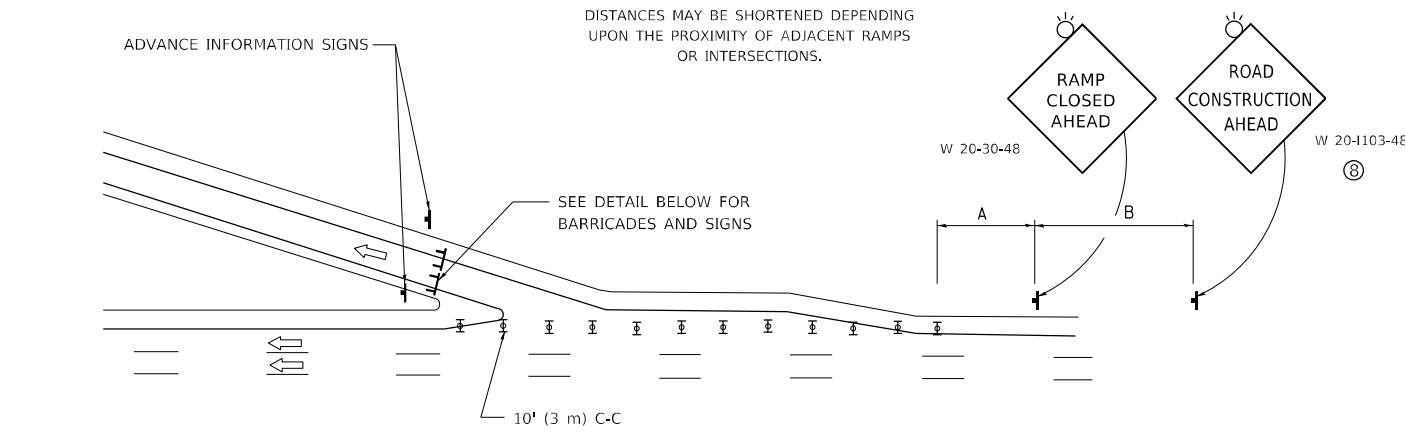


ENTRANCE RAMP CLOSURE

SIGN SPACING TABLE

FACILITY	DISTANCE BETWEEN SIGNS	
	A	B
EXPRESSWAY >24 HOURS	1000' (300 m)	1500' (450 m)
EXPRESSWAY ≤24 HOURS	500' (150 m)	500' (150 m)
ARTERIAL 55 MPH	500' (150 m)	500' (150 m)
ARTERIAL 50-45 MPH	350' (100 m)	350' (100 m)
ARTERIAL <45 MPH	200' (60 m)	200' (60 m)

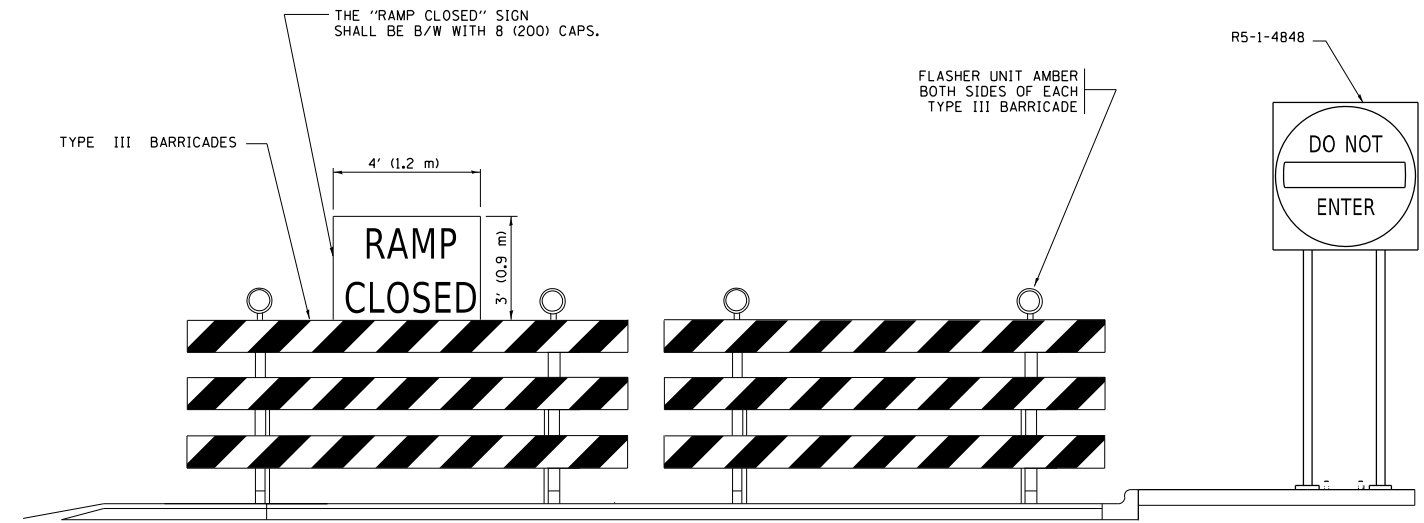
DISTANCES MAY BE SHORTENED DEPENDING UPON THE PROXIMITY OF ADJACENT RAMPS OR INTERSECTIONS.



EXIT RAMP CLOSURE

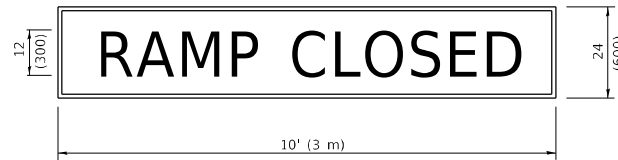
SYMBOLS

- ☐ TYPE II BARRICADE OR DRUM
- ☐ TYPE III BARRICADE WITH 2 FLASHING LIGHTS



DETAIL FOR REQUIRED BARRICADES & SIGNS

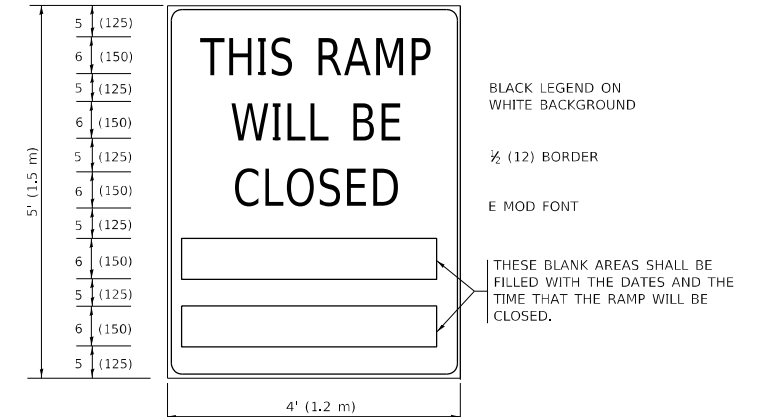
RAMP CLOSURE ADVANCE WARNING SIGN



BLACK LEGEND ON ORANGE BACKGROUND MOUNTED DIAGONALLY
E MOD FONT
1 (25) BORDER

THESE SIGNS ARE REQUIRED ON ALL THE EXIT GUIDE SIGNS FOR EXIT RAMPS THAT WILL BE CLOSED FOR MORE THAN FOUR (4) CONSECUTIVE DAYS.

RAMP CLOSURE ADVANCE INFORMATION SIGN



BLACK LEGEND ON WHITE BACKGROUND

1/2 (12) BORDER

E MOD FONT

THESE BLANK AREAS SHALL BE FILLED WITH THE DATES AND THE TIME THAT THE RAMP WILL BE CLOSED.

THESE SIGNS ARE REQUIRED ON BOTH SIDES OF THE RAMP, MINIMUM OF 1 WEEK IN ADVANCE OF THE CLOSURE.

THESE SIGNS SHALL BE FABRICATED AND PAID FOR ACCORDING TO THE TEMPORARY INFORMATION SIGNING SPECIAL PROVISION

GENERAL NOTES:

- ① CONES MAY BE SUBSTITUTED FOR DRUMS OR TYPE II BARRICADES DURING DAY OPERATIONS. CONES SHALL BE A MINIMUM OF 28 (700) HIGH.
- ② VERTICAL BARRICADES SHALL NOT BE USED FOR RAMP CLOSURES.
- ③ A FLAGGER SHALL BE POSITIONED AT EACH CLOSED RAMP THAT IS OPEN TO CONSTRUCTION VEHICLES, PRECEDED BY A W20-7 FLAGGER WARNING SIGN.
- ④ ALL ROUTE MARKERS AND TRAILBLAZER ASSEMBLIES WHICH DIRECT MOTORISTS TO A CLOSED ENTRANCE RAMP SHALL BE COVERED WHEN THE RAMP IS CLOSED FOR MORE THAN FOUR (4) DAYS.
- ⑤ THE SIGNING AND BARRICADING WHICH IS REQUIRED BY THIS DETAIL SHALL BE INCLUDED IN THE COST OF TRAFFIC CONTROL AND PROTECTION (EXPRESSWAYS).
- ⑥ AUTHORIZATION FROM THE DISTRICT'S BUREAU OF TRAFFIC IS REQUIRED FOR ALL RAMP CLOSURES.
- ⑦ THE RAMP CLOSURE ADVANCE INFORMATION SIGNS SHALL BE ERECTED IF THE CLOSURE TIME EXCEEDS TWENTY-FOUR (24) HOURS. ADDITIONAL ADVANCE WARNING SIGNS ON EXIT GUIDE SIGNING WILL BE REQUIRED FOR EXIT RAMP CLOSURES THAT EXCEED FOUR (4) DAYS IN LENGTH.
- ⑧ ROAD CONSTRUCTION AHEAD SIGNS MAY BE OMITTED WHEN THIS DETAIL IS USED IN CONJUNCTION WITH OTHER TRAFFIC CONTROL THAT ALREADY INCLUDES A ROAD CONSTRUCTION AHEAD SIGN.
- ⑨ ARTERIAL ROAD CONSTRUCTION AHEAD SIGNS SHALL BE INSTALLED ON THE LEFT SIDE OF TRAFFIC IF THE MEDIAN IS MORE THAN 10 FT WIDE.

ALL DIMENSIONS ARE IN INCHES (MILLIMETERS) UNLESS OTHERWISE SHOWN.

MODEL: Default
FILE NAME: p:\work\2020\2020-104-I\DOT\Documents\DOT - Office\Drawings - 1\Projects\2020\CADD\Drawings\Design\Drawings.dgn

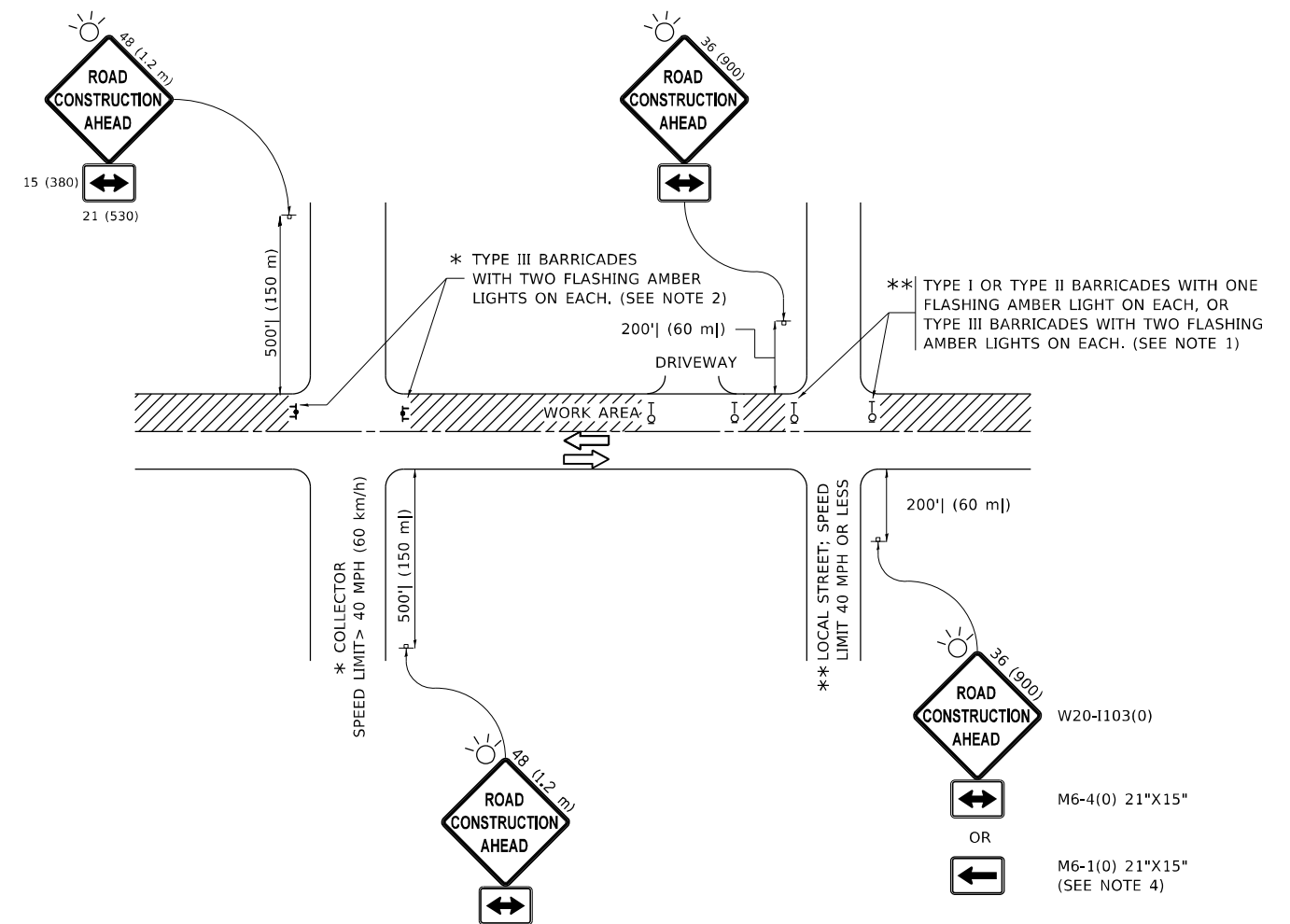
USER NAME = kalorm	DESIGNED - D.W.S.	REVISED - S.P.B._01-07
DRAWN -	REVISED - S.P.B._12-09	
PLOT SCALE = 100,0000' / in.	CHECKED -	REVISED - M.D._06-13
PLOT DATE = 12/11/2020	DATE - 02-83	REVISED - M.D._01-18

**STATE OF ILLINOIS
DEPARTMENT OF TRANSPORTATION**

**ENTRANCE_AND_EXIT_RAMP
CLOSURE_DETAILS**

SCALE: NONE SHEET 1 OF 1 SHEETS STA. TO STA.

F.A.U. RTE.	SECTION	COUNTY	TOTAL SHEETS	SHEET NO.
3537	2020-104-I	DUPAGE	20	13
TC-08			CONTRACT NO. 62L82	
		ILLINOIS	FED. AID PROJECT	



NOTES:

1. SIDE ROAD WITH A SPEED LIMIT OF 40 MPH (60 km/h) OR LESS AS SHOWN ON THE DRAWING AND AS DIRECTED BY THE ENGINEER:
 - a) ONE "ROAD CONSTRUCTION AHEAD" SIGN 36 x 36 (900x900) WITH A FLASHER MOUNTED ON IT APPROXIMATELY 200' (60 m) IN ADVANCE OF THE MAIN ROUTE.
 - b) THE CLOSED PORTION OF THE MAIN ROUTE SHALL BE PROTECTED BY BLOCKING WITH TYPE I, TYPE II OR TYPE III BARRICADES, 1/3 OF THE CROSS SECTION OF THE CLOSED PORTION.
2. SIDE ROAD WITH A SPEED LIMIT GREATER THAN 40 MPH (60 km/h) AS SHOWN ON THE DRAWING AND AS DIRECTED BY THE ENGINEER:
 - a) ONE "ROAD CONSTRUCTION AHEAD" SIGN 48 x 48 (1.2 m x 1.2 m) WITH A FLASHER MOUNTED ON IT APPROXIMATELY 500' (150 m) IN ADVANCE OF THE MAIN ROUTE.
 - b) BLOCKING WITH TYPE III BARRICADES, 1/2 OF THE CROSS SECTION OF THE CLOSED PORTION.
3. CONES MAY BE SUBSTITUTED FOR BARRICADES OR DRUMS AT HALF THE SPACING DURING DAY OPERATIONS. CONES SHALL BE A MINIMUM OF 28 (710) IN HEIGHT.
4. SIGNING AND THE WORK ZONE, A SINGLE HEADED ARROW (M6-1) SHALL BE USED IN LIEU OF THE DOUBLE HEADED ARROW (M6-4).
5. WHEN WORK IS BEING PERFORMED ON A SIDE ROAD OR DRIVEWAY, FOLLOW THE APPLICABLE STANDARD(S). THE DIRECTIONAL ARROW (M6-1 OR M6-4) SHALL BE COVERED OR REMOVED WHEN NO LONGER CONSISTENT WITH THE TRAFFIC CONTROL SET-UP.
6. ADVANCE WARNING SIGNS ARE TO BE OMITTED ON DRIVEWAYS UNLESS OTHERWISE SPECIFIED IN THE PLANS OR BY THE ENGINEER.
7. THE TRAFFIC CONTROL AND PROTECTION FOR SIDE ROADS, INTERSECTIONS, AND DRIVEWAYS SHALL BE INCLUDED IN THE COST OF SPECIFIED TRAFFIC CONTROL STANDARDS OR ITEMS.

All dimensions are in inches (millimeters) unless otherwise shown.

MODEL: Default
 FILE NAME: p:\pub\mroom.dwt\illinois\gov\PIWIDOT\Documents\IDOT_Offices\Distrefc_1\Project\ID150220\CADDData\Design\Distrefc.dgn

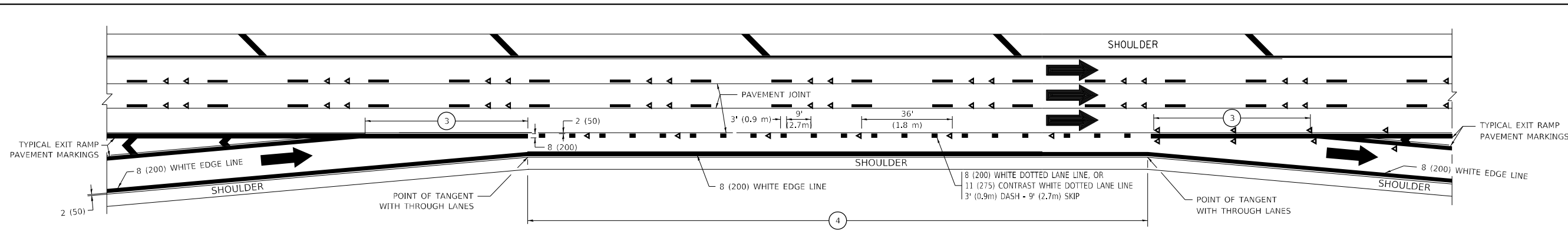
USER NAME = kalorm	DESIGNED - L.H.A.	REVISED - A. HOUSEH 10-15-96
	DRAWN -	REVISED - T. RAMMACHER 01-06-00
PLOT SCALE = 100,0000' / in.	CHECKED -	REVISED - A. SCHUETZE 07-01-13
PLOT DATE = 12/11/2020	DATE - 06-89	REVISED - A. SCHUETZE 09-15-16

**STATE OF ILLINOIS
DEPARTMENT OF TRANSPORTATION**

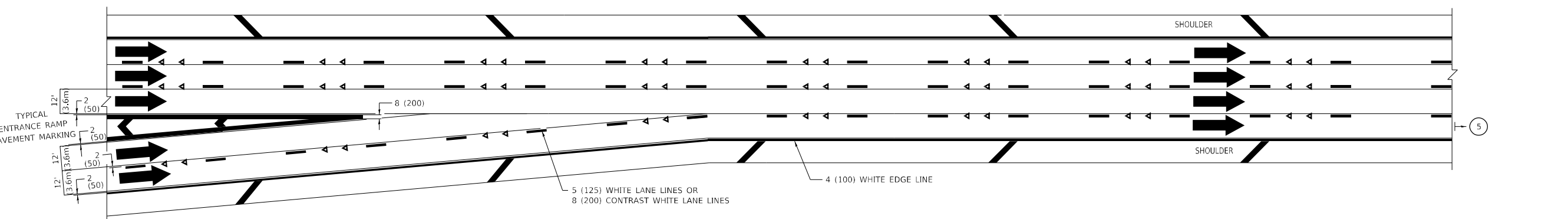
**TRAFFIC CONTROL AND PROTECTION FOR
SIDE ROADS, INTERSECTIONS, AND DRIVEWAYS**

SCALE: NONE SHEET 1 OF 1 SHEETS STA. TO STA.

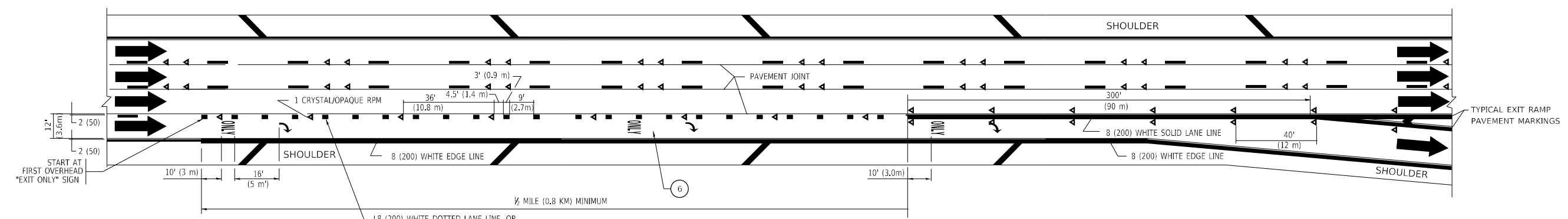
F.A.U. RTE.	SECTION	COUNTY	TOTAL SHEETS	SHEET NO.
3537	2020-104-I	DUPAGE	20	14
TC-10			CONTRACT NO. 62L82	
ILLINOIS FED. AID PROJECT				



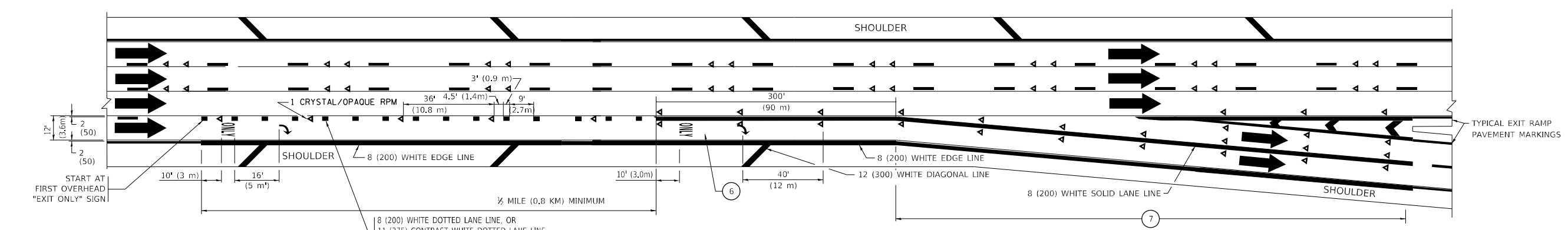
AUXILIARY LANE MARKINGS



TWO LANE ENTRANCE RAMP WITH MERGE MARKINGS



EXIT ONLY LANE MARKINGS



EXIT ONLY WITH OPTION LANE MARKINGS

- NOTES:
- 3 OMIT WHEN LENGTH OF AUXILIARY LANE IS LESS THAN 500' (150 m).
 - 4 8-INCH WIDE DOTTED LANE LINE MARKINGS SHALL BE USED WHEN THE LENGTH OF THE AUXILIARY LANE IS 2 MILES OR LESS.
 - 5 FOR TWO-LANE ENTRANCE RAMP, IF RIGHT LANE ENDS, USE TYPICAL ENTRANCE RAMP PAVEMENT MARKINGS.
 - 6 ONLY AND ARROWS EQUALLY SPACED, 500' (150 m) MAXIMUM SPACING. FULL SIZE LETTERS AND ARROW SHALL BE USED.
 - 7 CONTINUE 8" SOLID LANE LINE THROUGH EXIT TO END OF PAVED GORE.

MODEL: Default
 FILE: Multi-Lane-Freeway-Pavement-Markings-Details.dwg
 PROJECT: 2020-104-1
 SHEET: 16
 DATE: 12/11/2020

USER NAME = kalorm	DESIGNED - D.W.S.	REVISED - J.A.F. 02-06
		REVISED - S.P.B. 01-07
PLOT SCALE = 100,0000' / in.	CHECKED -	REVISED - S.P.B. 01-10
PLOT DATE = 12/11/2020	DATE - 01-90	REVISED - M.D. 09-17

STATE OF ILLINOIS
DEPARTMENT OF TRANSPORTATION

MULTI-LANE FREEWAY
PAVEMENT MARKING DETAILS

SCALE: NONE SHEET 1 OF 2 SHEETS STA. TO STA.

F.A.U. RTE.	SECTION	COUNTY	TOTAL SHEETS	SHEET NO.
3537	2020-104-1	DUPAGE	20	16
TC-12		CONTRACT NO. 62L82		
ILLINOIS FED. AID PROJECT				

TURN BAY ENTRANCE AT START OF LANE CLOSURE TAPER

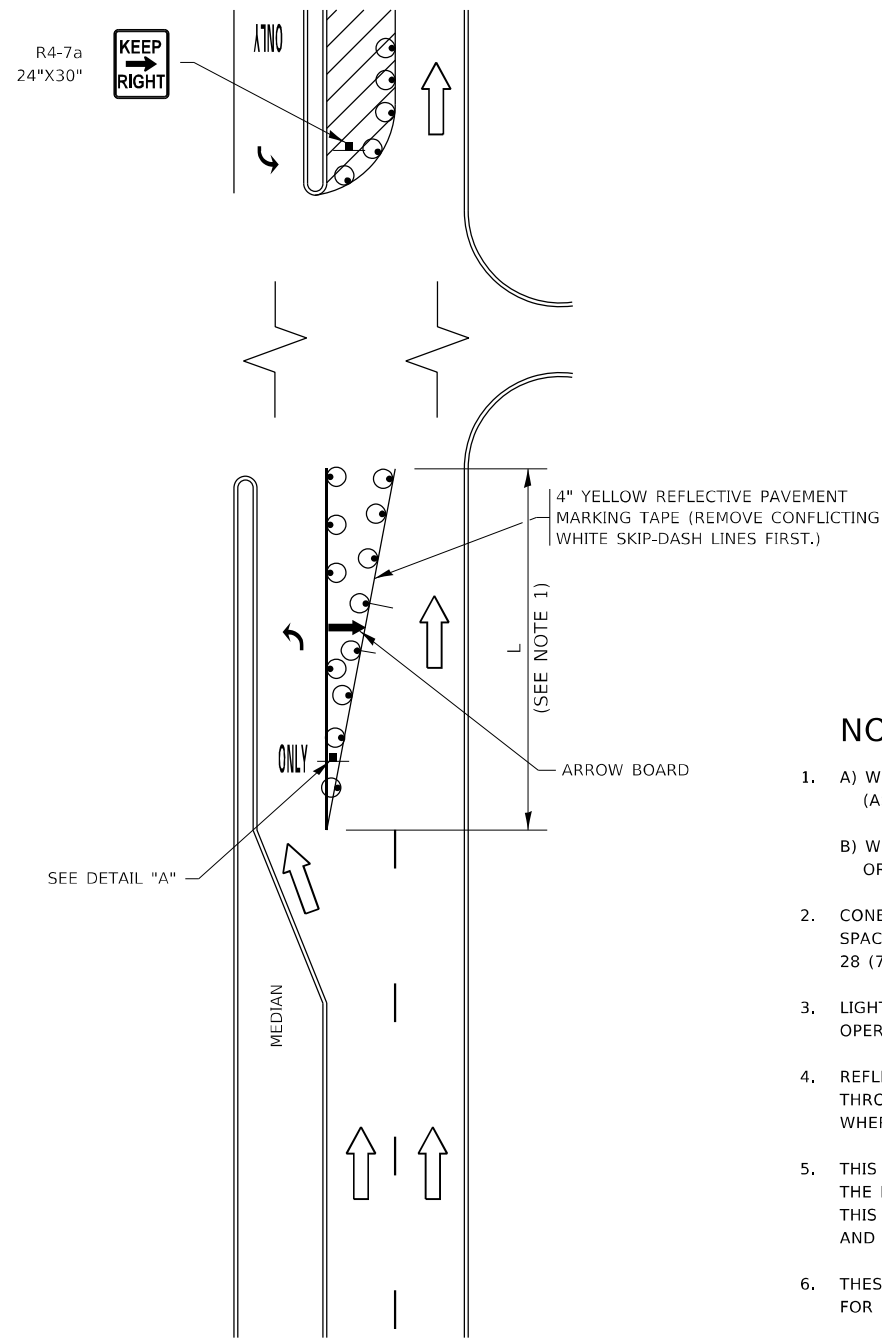


FIGURE 1

TURN BAY ENTRANCE WITHIN A LANE CLOSURE

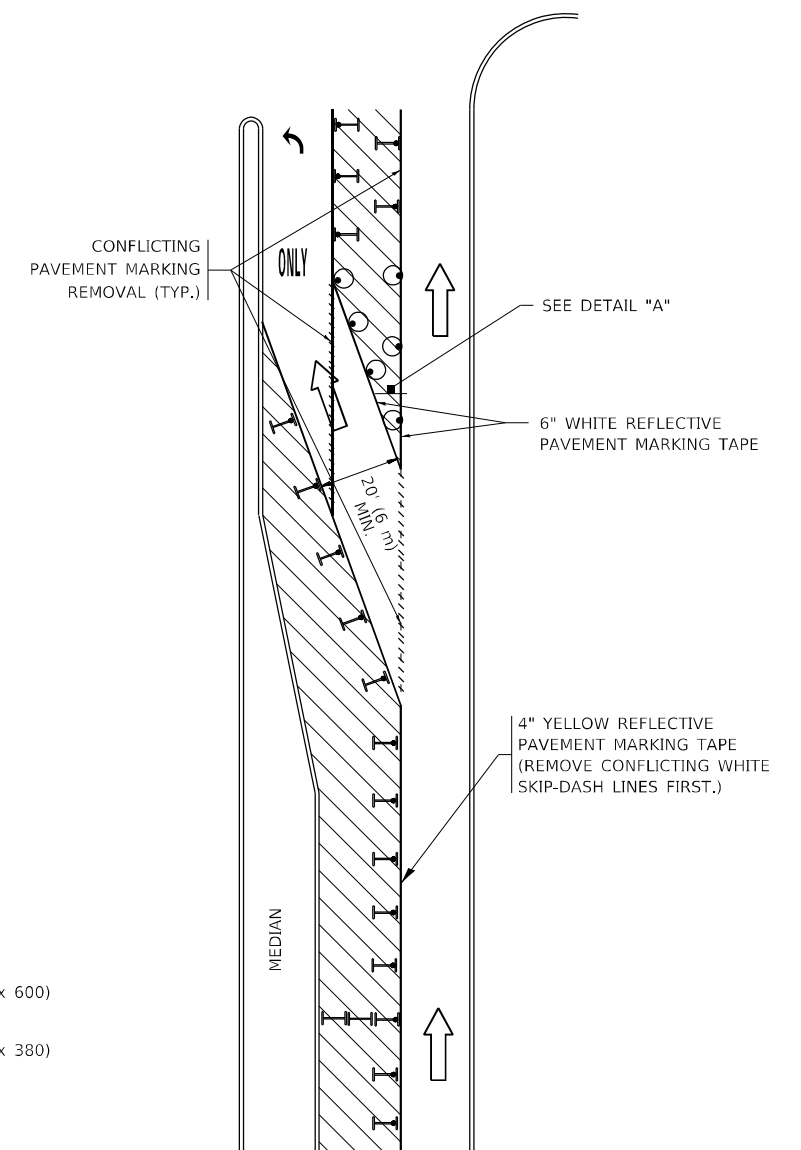


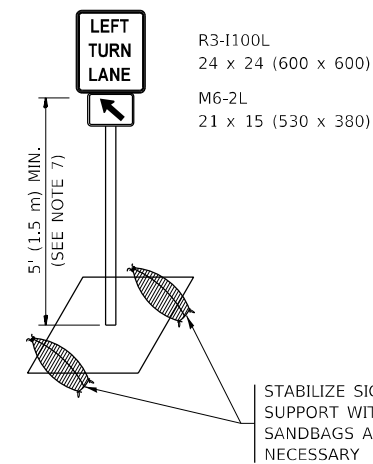
FIGURE 2

LEGEND

- WORK AREA
- LANE OPEN TO TRAFFIC
- ARROW BOARD
- TYPE I OR II BARRICADE OR DRUM WITH STEADY BURN LIGHT
- DRUM WITH STEADY BURN LIGHT
- SIGN ASSEMBLY
- TYPE I OR II CHECK BARRICADE WITH FLASHING LIGHT

NOTES:

1. A) WHEN "L" IS \leq THE STORAGE LENGTH OF THE TURN LANE (AS SHOWN IN FIG. 1), USE FIGURE 1.
 B) WHEN "L" IS $>$ THE STORAGE LENGTH OF THE TURN LANE OR THE TURN LANE IS WITHIN THE LANE CLOSURE, USE FIGURE 2.
2. CONES MAY BE SUBSTITUTED FOR BARRICADES OR DRUMS AT HALF THE SPACING DURING DAY OPERATIONS. CONES SHALL BE A MINIMUM OF 28 (710) IN HEIGHT.
3. LIGHTS WILL NOT BE REQUIRED ON BARRICADES OR DRUMS FOR DAY OPERATIONS. ALL LIGHTS SHALL BE MONODIRECTIONAL.
4. REFLECTIVE TEMPORARY PAVEMENT MARKINGS SHALL BE PLACED THROUGHOUT THE BARRICADED AREAS OF EACH TURN BAY AS SHOWN WHERE THE CLOSURE TIME IS GREATER THAN FOURTEEN (14) DAYS.
5. THIS APPLICATION ALSO APPLIES WHEN WORK IS BEING PERFORMED IN THE RIGHT LANE(S) AND THE RIGHT TURN BAY IS TO REMAIN OPEN. UNDER THIS CONDITION, "RIGHT TURN LANE" R3-1100R 24 x 24 (600 x 600) AND M6-2R 21 x 15 (530 x 380) SHALL BE USED.
6. THESE CONTROLS SHALL SUPPLEMENT MAINLINE TRAFFIC CONTROL FOR LANE CLOSURES.
7. THE SIGNS SHALL BE MOUNTED ABOVE THE BARRICADES/DRUMS ON SEPARATE SIGN SUPPORTS THAT MEET NCHRP 350 OR MASH REQUIREMENTS.
8. TRAFFIC CONTROL AND PROTECTION AT TURN BAYS (TO REMAIN OPEN TO TRAFFIC) SHALL BE INCLUDED IN THE COST OF SPECIFIED TRAFFIC CONTROL STANDARDS OR ITEMS.



DETAIL A

All dimensions are in inches (millimeters) unless otherwise shown.

MODEL: Default
 FILE NAME: p:\pub\mcom.dwt\illinois\dot\Documents\DOT_Offices\Distrefc_1\Projects\150220\CADDData\Design\Distrefc.dgn

USER NAME = kalm	DESIGNED - T. RAMMACHER 09-08-94	REVISED - R. BORO 09-14-09
	DRAWN - A. HOUSEH 11-07-95	REVISED - A. SCHUETZE 07-01-13
PLOT SCALE = 100,0000' / in.	CHECKED - A. HOUSEH 10-12-96	REVISED - A. SCHUETZE 09-15-16
PLOT DATE = 12/11/2020	DATE - T. RAMMACHER 01-06-00	REVISED -

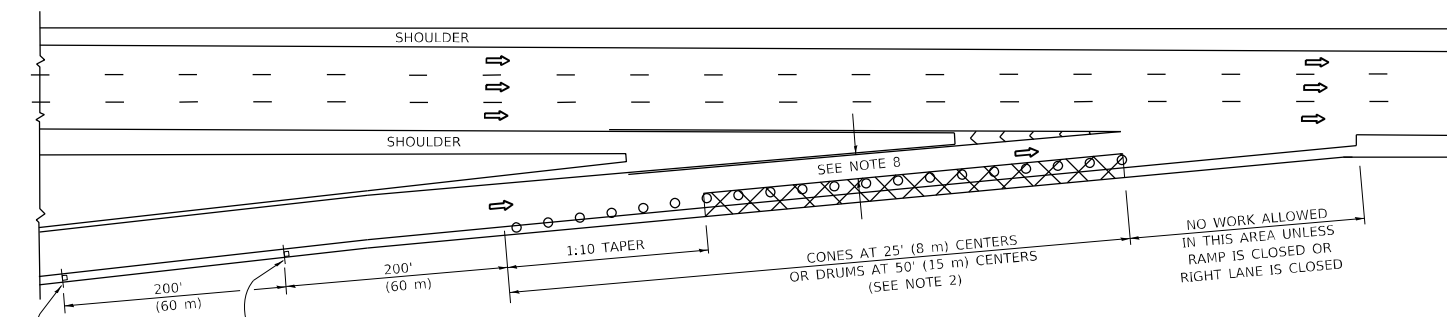
**STATE OF ILLINOIS
DEPARTMENT OF TRANSPORTATION**

**TRAFFIC CONTROL AND PROTECTION AT TURN BAYS
(TO REMAIN OPEN TO TRAFFIC)**

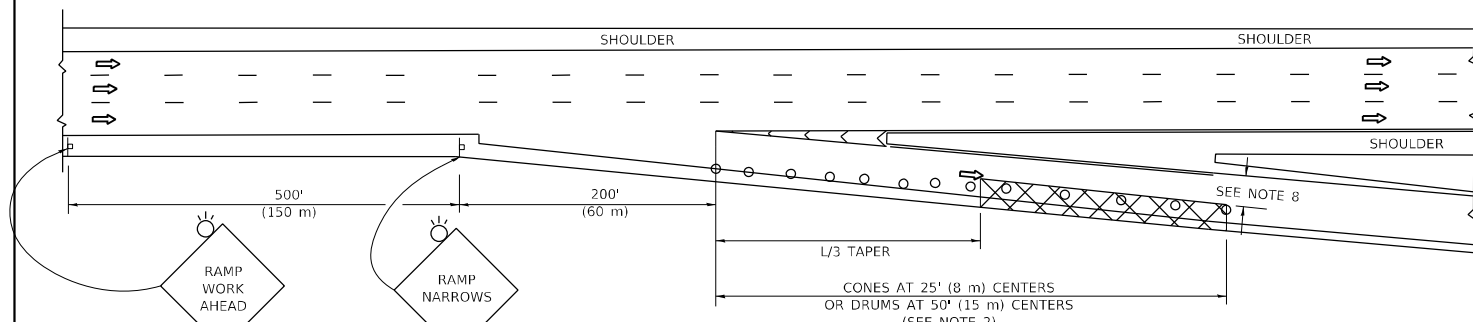
SCALE: NONE SHEET 1 OF 1 SHEETS STA. TO STA.

F.A.U. RTE.	SECTION	COUNTY	TOTAL SHEETS	SHEET NO.
3537	2020-104-I	DUPAGE	20	18
TC-14		CONTRACT NO. 62L82		
ILLINOIS FED. AID PROJECT				

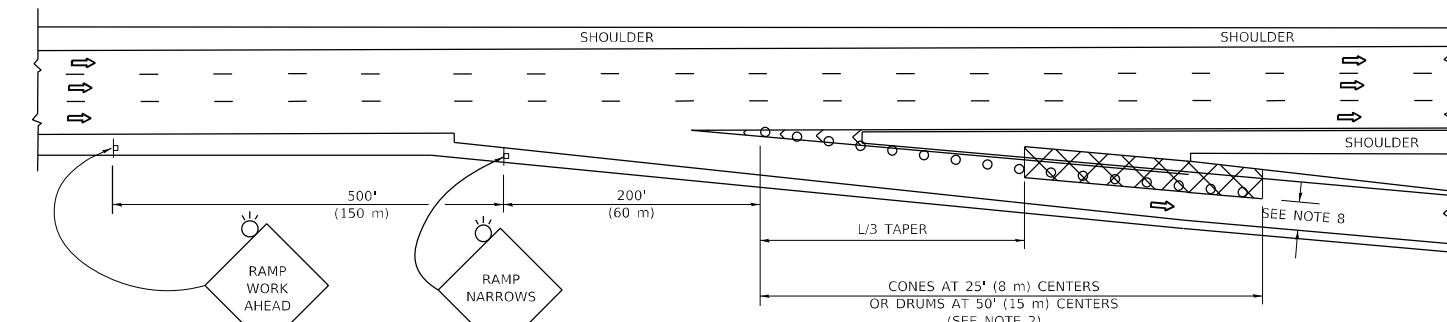
PARTIAL RAMP CLOSURE DETAILS



TYPICAL ENTRANCE RAMP



TYPICAL EXIT RAMP



TYPICAL EXIT RAMP

SYMBOLS

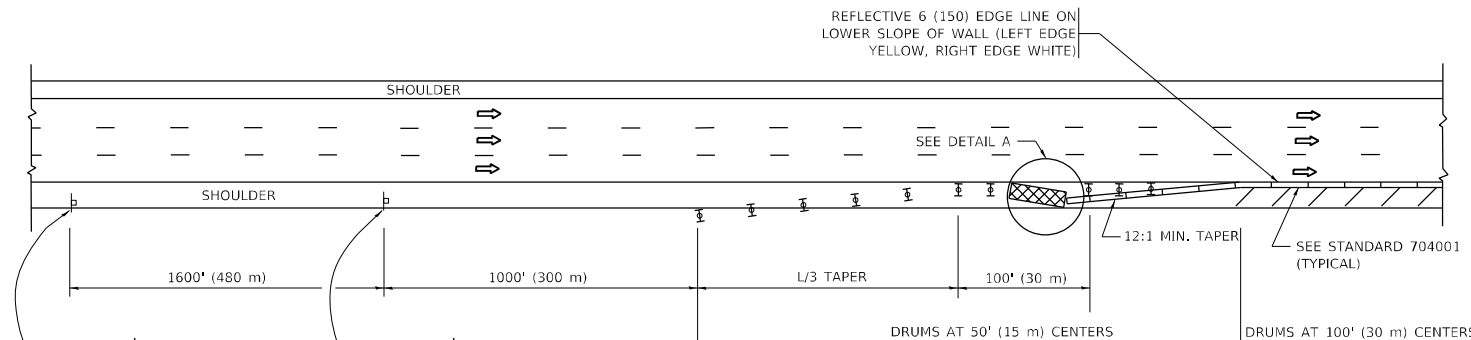
- ACTIVE WORK AREA
- SIGN ON PORTABLE OR PERMANENT SUPPORT
- FLAGGER WITH CONTROL SIGN
- TYPE II BARRICADE OR DRUM
- CONE, DRUM OR BARRICADE
- IMPACT ATTENUATOR OF TYPE AND TEST LEVEL SPECIFIED

GENERAL NOTES:

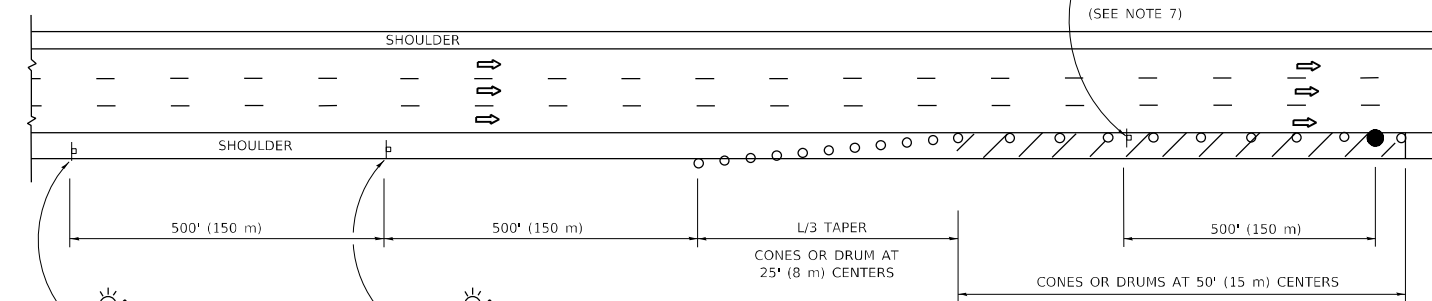
1. THE "L" DISTANCE EQUALS:

$L = \frac{W \cdot S}{30}$	$L = \frac{W \cdot S}{1.6}$
45 mph (80 km/h) OR GREATER:	METRIC ENGLISH
$W =$ WIDTH OF OFFSET IN FEET (METERS)	$S =$ NORMAL POSTED SPEED MPH (KM/H)
2. TYPE II BARRICADES OR DRUMS ARE REQUIRED FOR ALL NIGHTTIME CLOSURES. TYPE II BARRICADES OR DRUMS WITH MONODIRECTIONAL STEADY BURN LIGHTS ARE REQUIRED FOR DELINEATING OBSTACLES, EXCAVATIONS, OR HAZARDS EXCEEDING 100 FT (30m) IN LENGTH AT NIGHT.
3. ALL SIGNS SHALL BE POST MOUNTED IF THE CLOSURE TIME EXCEEDS FOUR DAYS.
4. FLASHING LIGHTS SHALL BE USED DURING THE HOURS OF DARKNESS AND SHALL BE INSTALLED ABOVE THE FIRST TWO SETS OF SIGNS.

SHOULDER CLOSURE DETAILS



PERMANENT SHOULDER CLOSURE



TEMPORARY SHOULDER CLOSURE



DETAIL "A" IMPACT ATTENUATOR, TEMPORARY (SEE NOTE 5)

5. THE IMPACT ATTENUATOR, TEMPORARY IS NOT REQUIRED WHEN THE TEMPORARY CONCRETE BARRIER WALL IS PROTECTED BY OR IS TIED INTO THE EXISTING GUARDRAIL. IF OFFSET IS LESS THAN 5 FEET USE NARROW USE TYPE DEVICE TO MEET NCHRP350/MASH.
6. AUTHORIZATION FROM THE DISTRICT'S BUREAU OF TRAFFIC IS REQUIRED FOR ALL FREEWAY CLOSURES.
7. THE FLAGGER AND FLAGGER SIGN ARE REQUIRED AT THE ABOVE WORK SITES WHEN:
 - a. FOUR OR MORE WORK VEHICLES ENTER THE TRAFFIC LANES IN A ONE HOUR PERIOD.
 - b. THE WORK AVTIVITY REQUIRES FREQUENT ENCR OACHMENT INTO THE LANE OPEN TO TRAFFIC.
 THE FLAGGER SHALL BE STATIONED APPROXIMATELY 100' (30 m) TO 200' (60 m) IN ADVANCE OF THE WORKERS.
8. 12' MIN. WIDTH TANGENT SECTION
16' MIN. WIDTH CURVE SECTION.
9. TEMPORARY SHOULDER AND NON-SYSTEM INTERCHANGE PARTIAL RAMP CLOSURES ARE ALLOWED WEEKDAYS BETWEEN 9:00 A.M. AND 3:00 P.M. AND BETWEEN 7:00 P.M. AND 5:00 A.M. OR AS APPROVED BY THE EXPRESSWAY TRAFFIC OPERATIONS ENGINEER. PERMANENT SHOULDER AND PARTIAL RAMP CLOSURES WILL ONLY BE PERMITTED IF CALLED FOR IN THE PLANS OR AS APPROVED BY THE EXPRESSWAY OPERATIONS ENGINEER.

ALL DIMENSIONS ARE IN INCHES (MILLIMETERS) UNLESS OTHERWISE SHOWN.

MODEL: Default
FILE NAME: p:\mhammond.dwt\illinois\pww\DOT\Documents\DOT - Office\Distrefc - 1\Projects\ID150220\CADD\Drawings\Design\Distfcd.dgn

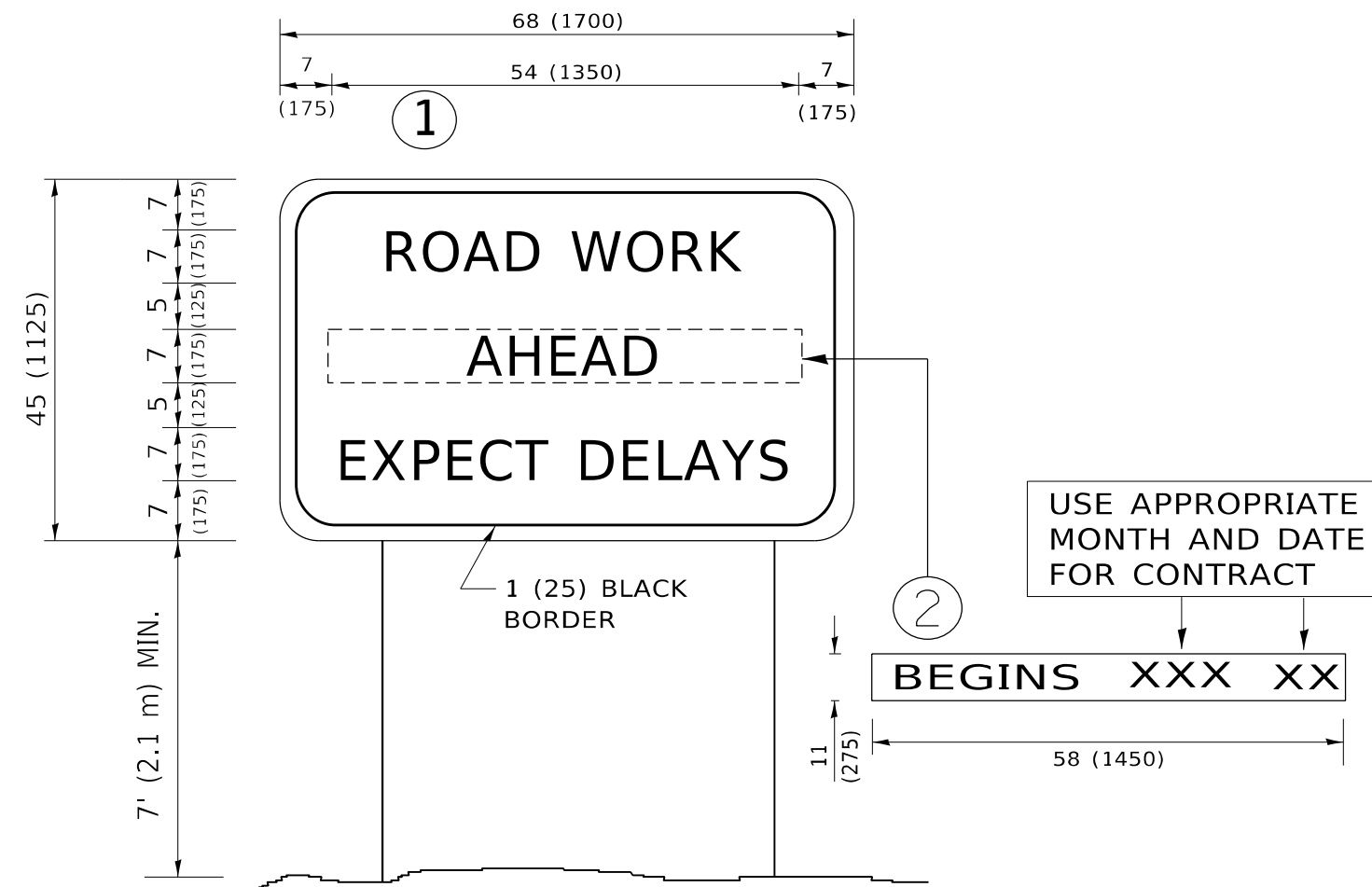
USER NAME = kalam	DESIGNED -	REVISED - S.P.B. 12-09
	DRAWN - D.W.S.	REVISED - M.D. 06-13
PLOT SCALE = 100,0000' / in.	CHECKED -	REVISED - M.D. 01-18
PLOT DATE = 12/11/2020	DATE - 11-96	REVISED - M.D. 10-20

**STATE OF ILLINOIS
DEPARTMENT OF TRANSPORTATION**

**TRAFFIC CONTROL DETAILS FOR FREEWAY
SHOULDER CLOSURES AND PARTIAL RAMP CLOSURES**

SCALE: NONE SHEET 1 OF 1 SHEETS STA. TO STA.

F.A.U. RTE.	SECTION	COUNTY	TOTAL SHEETS	SHEET NO.
3537	2020-104-I	DUPAGE	20	19
TC-17			CONTRACT NO. 62L82	
ILLINOIS FED. AID PROJECT				



NOTES:

1. USE BLACK LETTERING ON ORANGE BACKGROUND.
2. ERECT SIGNS IN ADVANCE OF THE LOCATION FOR THE "ROAD CONSTRUCTION AHEAD" SIGN AT LOCATIONS AS DIRECTED BY THE ENGINEER.
3. ERECT SIGN ① WITH INSTALLED PANEL ② ONE WEEK PRIOR TO THE START OF CONSTRUCTION.
4. REMOVE PANEL ② SOON AFTER THE START OF CONSTRUCTION.
5. SEE SPECIAL PROVISION FOR "TEMPORARY INFORMATION SIGNING" FOR ADDITIONAL INFORMATION.
6. ONE SIGN ASSEMBLY EQUALS 25.70 SQ. FT. (2.3 SQ. M.)
7. SHALL BE PAID FOR AS TEMPORARY INFORMATION SIGNING.

ALL DIMENSIONS ARE IN INCHES (MILLIMETERS) UNLESS OTHERWISE SHOWN.

MODEL: Default
 FILE NAME: p:\pub\mroom.dwg
 PROJECT: I:\Projects\15020\CADDData\Design\Dis54.dgn

USER NAME = kalorm	DESIGNED -	REVISED - R. MIRS 09-15-97
	DRAWN -	REVISED - R. MIRS 12-11-97
PLOT SCALE = 100,0000 ' / in.	CHECKED -	REVISED - T. RAMMACHER 02-02-99
PLOT DATE = 12/11/2020	DATE -	REVISED - C. JUCIUS 01-31-07

**STATE OF ILLINOIS
DEPARTMENT OF TRANSPORTATION**

ARTERIAL ROAD INFORMATION SIGN			
SCALE: NONE	SHEET 1	OF 1 SHEETS	STA. TO STA.

F.A.U. RTE.	SECTION	COUNTY	TOTAL SHEETS	SHEET NO.
3537	2020-104-I	DUPAGE	20	20
TC-22		CONTRACT NO. 62L82		
ILLINOIS FED. AID PROJECT				