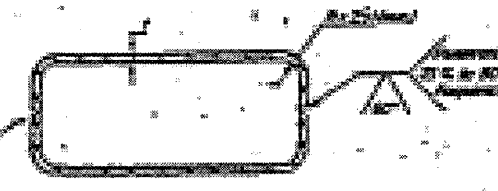
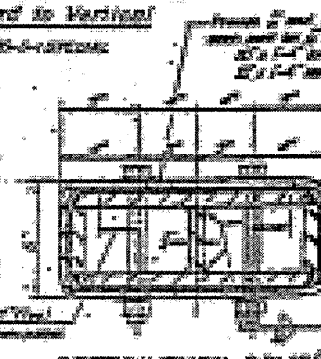
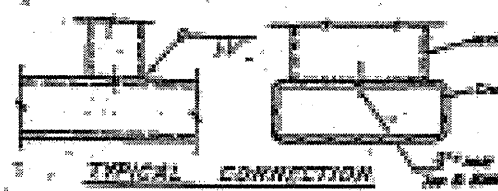
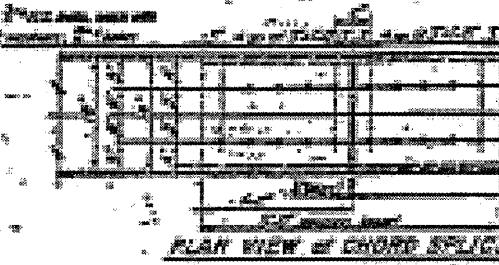
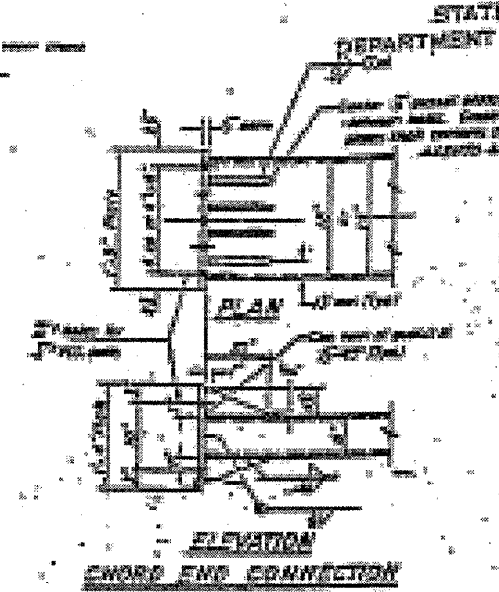
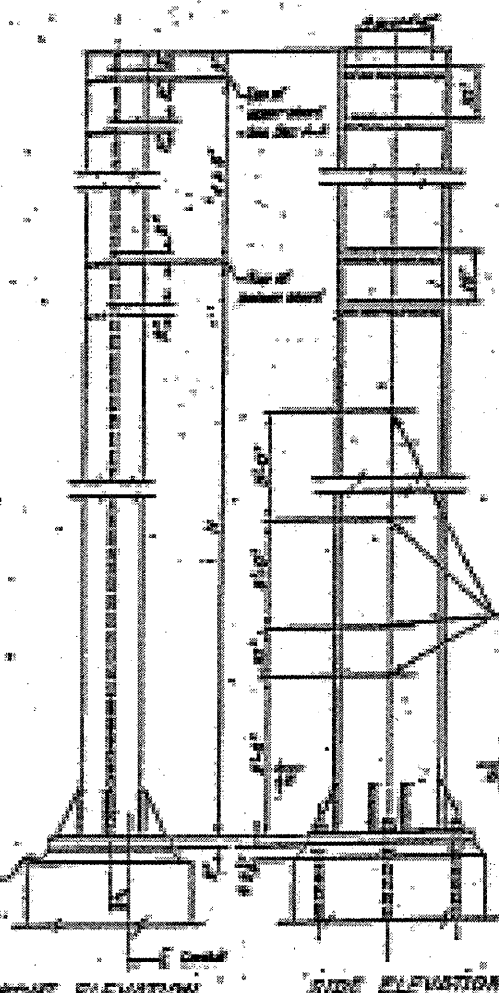
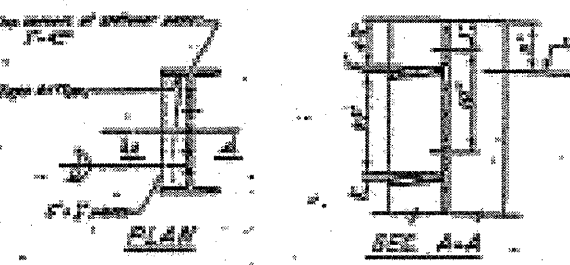


STATE OF ILLINOIS  
 DEPARTMENT OF TRANSPORTATION

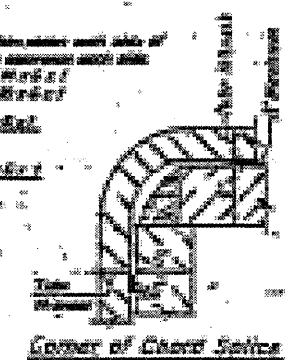
PROJECT NO.	DATE	BY	CHKD
150221290L006.8	10/11/04	J. J. ...	J. J. ...

Item	Quantity	Unit	Material	Notes
ST-31	1	EA	STEEL	POST
ST-32	1	EA	STEEL	CHORD
ST-33	1	EA	STEEL	TRUSS
ST-34	1	EA	STEEL	TRUSS
ST-35	1	EA	STEEL	TRUSS
ST-36	1	EA	STEEL	TRUSS
ST-37	1	EA	STEEL	TRUSS
ST-38	1	EA	STEEL	TRUSS



ALTERNATE BUILT-UP TUBE

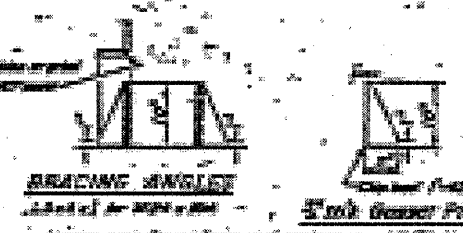
Check, design and dimensions shall be as indicated on the drawings indicated in table.



Corner of Chord Splice



CAMBER DIAGRAM



BRACING ANGLES

Member No.	Location	Size	Material	Quantity	Notes
ST-31	POST	12" x 12"	STEEL	1	
ST-32	CHORD	12" x 12"	STEEL	1	
ST-33	TRUSS	12" x 12"	STEEL	1	
ST-34	TRUSS	12" x 12"	STEEL	1	
ST-35	TRUSS	12" x 12"	STEEL	1	
ST-36	TRUSS	12" x 12"	STEEL	1	
ST-37	TRUSS	12" x 12"	STEEL	1	
ST-38	TRUSS	12" x 12"	STEEL	1	

COMPONENTS SHALL BE AS DETAILED IN SHOP DRAWINGS

The Contractor and the Engineer shall field verify the dimensions of the end support to be replaced prior to fabrication. The splice bolts for connecting the end supports to the truss shall be replaced with high strength hot dipped galvanized bolts of the proper size.

\* MODIFY SHOP DRAWINGS FOR STRUCTURES ST-31, ST-32 & ST-33

Structure No. 150221290L006.8 (ST-48) G2

OVERHEAD SIGN STRUCTURES  
 POST and CHORD DETAILS  
 PART 451 B J-200