

STATE OF ILLINOIS
 DEPARTMENT OF TRANSPORTATION

NO.	DATE	BY	REVISION

GENERAL NOTES

DESIGN: ASBESTO REINFORCED CONCRETE FOR STRUCTURAL MEMBERS FOR HIGHWAY BRIDGE APPROACHES AND RYAN'S BRIDGE, 1922

CONSTRUCTION: Standard Specifications for Road and Bridge Construction, State of Illinois, Street Caster & REEVE Construction Specifications for Road and Bridge Construction, Standard Specifications for Traffic Control Signs, 1994 and Standard Practices

MINIMUM CLEARANCE: Vertical Clearance = 17'-0" (See Specifications)

LOADING: AS PER ROAD DESIGN PLUS 10% EASY FACTOR

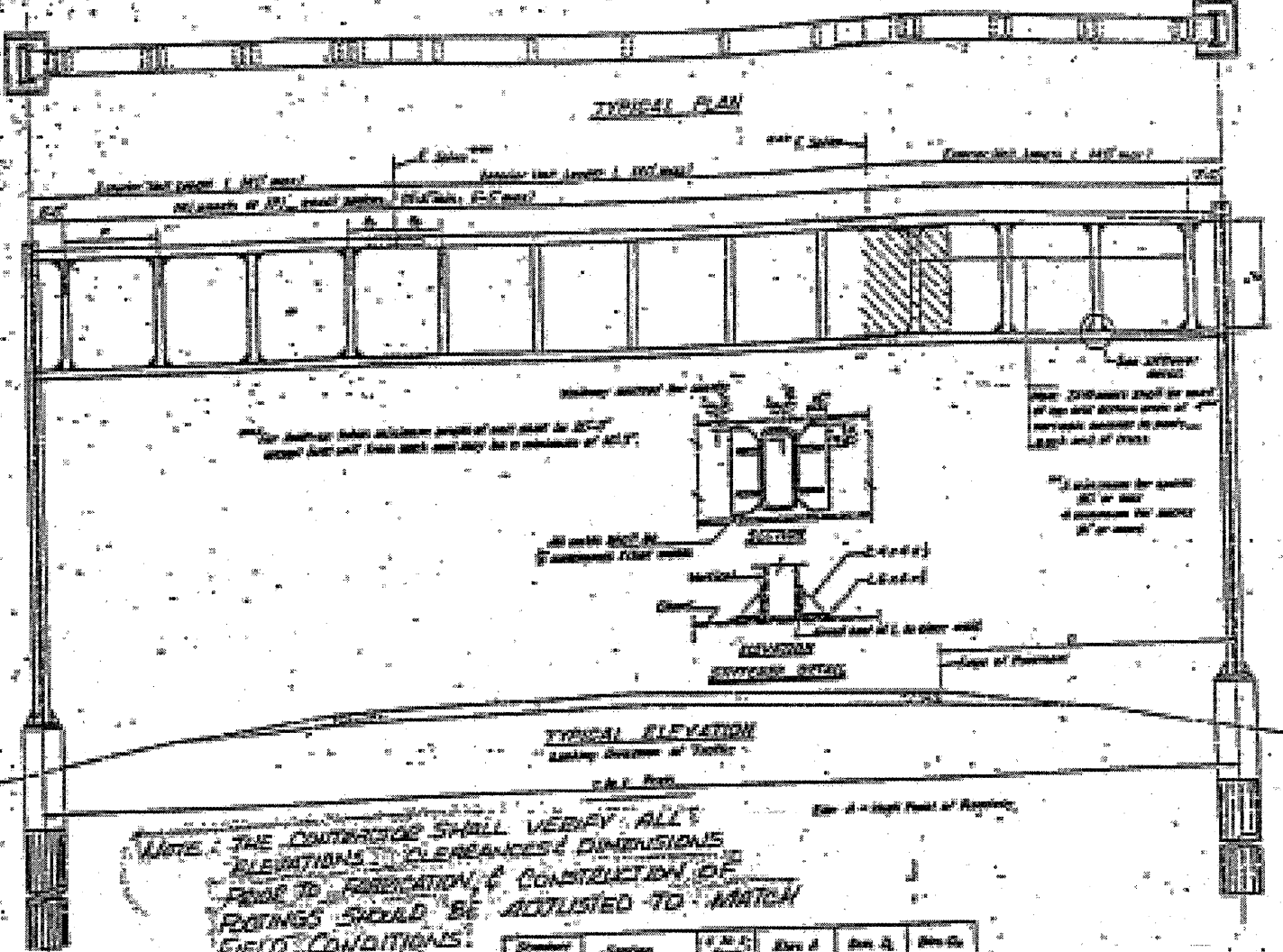
WIND LOADING: AS PER ROAD DESIGN PLUS 10% EASY FACTOR

WIND BRACING: AS PER ROAD DESIGN PLUS 10% EASY FACTOR

REINFORCEMENT: REINFORCEMENT SHALL BE AS PER REQUIREMENTS OF ASBESTO REINFORCED CONCRETE, STATE OF ILLINOIS, STREET CASTER & REEVE CONSTRUCTION SPECIFICATIONS FOR ROAD AND BRIDGE CONSTRUCTION, 1922

STEEL: ALL STEEL SHALL BE AS PER REQUIREMENTS OF ASBESTO REINFORCED CONCRETE, STATE OF ILLINOIS, STREET CASTER & REEVE CONSTRUCTION SPECIFICATIONS FOR ROAD AND BRIDGE CONSTRUCTION, 1922

PAINTING: THE JOINTS AND SURF SHALL BE PAINTED AS PER ROAD DESIGN PLUS 10% EASY FACTOR



NOTE: THE CONTRACTOR SHALL VERIFY ALL ELEVATIONS, CLEARANCES, DIMENSIONS FROM TO FABRICATION & CONSTRUCTION OF FOOTINGS SHOULD BE ADJUSTED TO MATCH FIELD CONDITIONS.

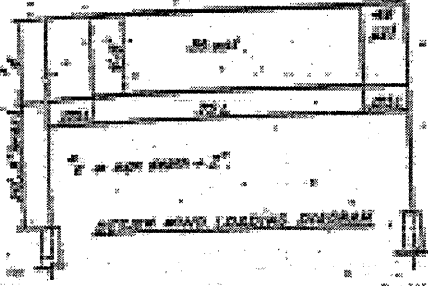
Station	Span	Span	Span	Span	Span
ST-01	100'-0"	100'-0"	100'-0"	100'-0"	100'-0"
ST-02	100'-0"	100'-0"	100'-0"	100'-0"	100'-0"
ST-03	100'-0"	100'-0"	100'-0"	100'-0"	100'-0"
ST-04	100'-0"	100'-0"	100'-0"	100'-0"	100'-0"
ST-05	100'-0"	100'-0"	100'-0"	100'-0"	100'-0"
ST-06	100'-0"	100'-0"	100'-0"	100'-0"	100'-0"
ST-07	100'-0"	100'-0"	100'-0"	100'-0"	100'-0"
ST-08	100'-0"	100'-0"	100'-0"	100'-0"	100'-0"
ST-09	100'-0"	100'-0"	100'-0"	100'-0"	100'-0"
ST-10	100'-0"	100'-0"	100'-0"	100'-0"	100'-0"
ST-11	100'-0"	100'-0"	100'-0"	100'-0"	100'-0"
ST-12	100'-0"	100'-0"	100'-0"	100'-0"	100'-0"
ST-13	100'-0"	100'-0"	100'-0"	100'-0"	100'-0"
ST-14	100'-0"	100'-0"	100'-0"	100'-0"	100'-0"
ST-15	100'-0"	100'-0"	100'-0"	100'-0"	100'-0"
ST-16	100'-0"	100'-0"	100'-0"	100'-0"	100'-0"
ST-17	100'-0"	100'-0"	100'-0"	100'-0"	100'-0"
ST-18	100'-0"	100'-0"	100'-0"	100'-0"	100'-0"
ST-19	100'-0"	100'-0"	100'-0"	100'-0"	100'-0"
ST-20	100'-0"	100'-0"	100'-0"	100'-0"	100'-0"
ST-21	100'-0"	100'-0"	100'-0"	100'-0"	100'-0"
ST-22	100'-0"	100'-0"	100'-0"	100'-0"	100'-0"
ST-23	100'-0"	100'-0"	100'-0"	100'-0"	100'-0"
ST-24	100'-0"	100'-0"	100'-0"	100'-0"	100'-0"
ST-25	100'-0"	100'-0"	100'-0"	100'-0"	100'-0"
ST-26	100'-0"	100'-0"	100'-0"	100'-0"	100'-0"
ST-27	100'-0"	100'-0"	100'-0"	100'-0"	100'-0"
ST-28	100'-0"	100'-0"	100'-0"	100'-0"	100'-0"
ST-29	100'-0"	100'-0"	100'-0"	100'-0"	100'-0"
ST-30	100'-0"	100'-0"	100'-0"	100'-0"	100'-0"
ST-31	100'-0"	100'-0"	100'-0"	100'-0"	100'-0"
ST-32	100'-0"	100'-0"	100'-0"	100'-0"	100'-0"
ST-33	100'-0"	100'-0"	100'-0"	100'-0"	100'-0"
ST-34	100'-0"	100'-0"	100'-0"	100'-0"	100'-0"
ST-35	100'-0"	100'-0"	100'-0"	100'-0"	100'-0"
ST-36	100'-0"	100'-0"	100'-0"	100'-0"	100'-0"
ST-37	100'-0"	100'-0"	100'-0"	100'-0"	100'-0"
ST-38	100'-0"	100'-0"	100'-0"	100'-0"	100'-0"
ST-39	100'-0"	100'-0"	100'-0"	100'-0"	100'-0"
ST-40	100'-0"	100'-0"	100'-0"	100'-0"	100'-0"
ST-41	100'-0"	100'-0"	100'-0"	100'-0"	100'-0"
ST-42	100'-0"	100'-0"	100'-0"	100'-0"	100'-0"
ST-43	100'-0"	100'-0"	100'-0"	100'-0"	100'-0"
ST-44	100'-0"	100'-0"	100'-0"	100'-0"	100'-0"
ST-45	100'-0"	100'-0"	100'-0"	100'-0"	100'-0"
ST-46	100'-0"	100'-0"	100'-0"	100'-0"	100'-0"
ST-47	100'-0"	100'-0"	100'-0"	100'-0"	100'-0"
ST-48	100'-0"	100'-0"	100'-0"	100'-0"	100'-0"
ST-49	100'-0"	100'-0"	100'-0"	100'-0"	100'-0"
ST-50	100'-0"	100'-0"	100'-0"	100'-0"	100'-0"

TOTAL BILL OF MATERIAL

OVERHEAD SIGN STRUCTURE, SPAN (GENERAL)	Qty	Unit
OVERHEAD SIGN STRUCTURE, MATERIAL, TYPE 1		
SHALL BE AS PER SPECIFICATIONS		

OVERHEAD SIGN STRUCTURES
 GENERAL PLAN & ELEVATION

BAR 451 5 1-230



EXISTING TRUSS RELOCATED FROM 772+50 (200)
