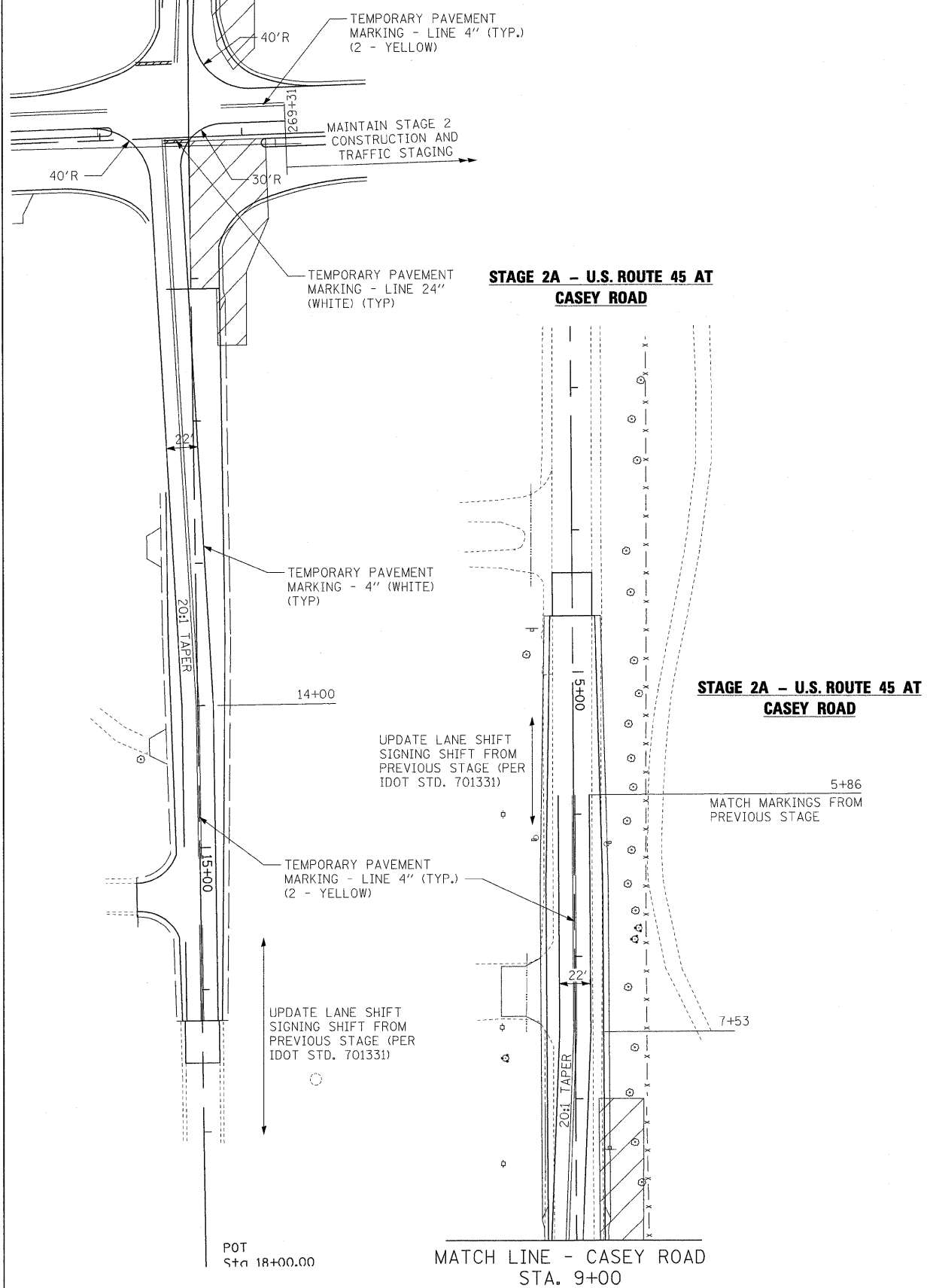


MATCH LINE - CASEY ROAD
STA. 9+00

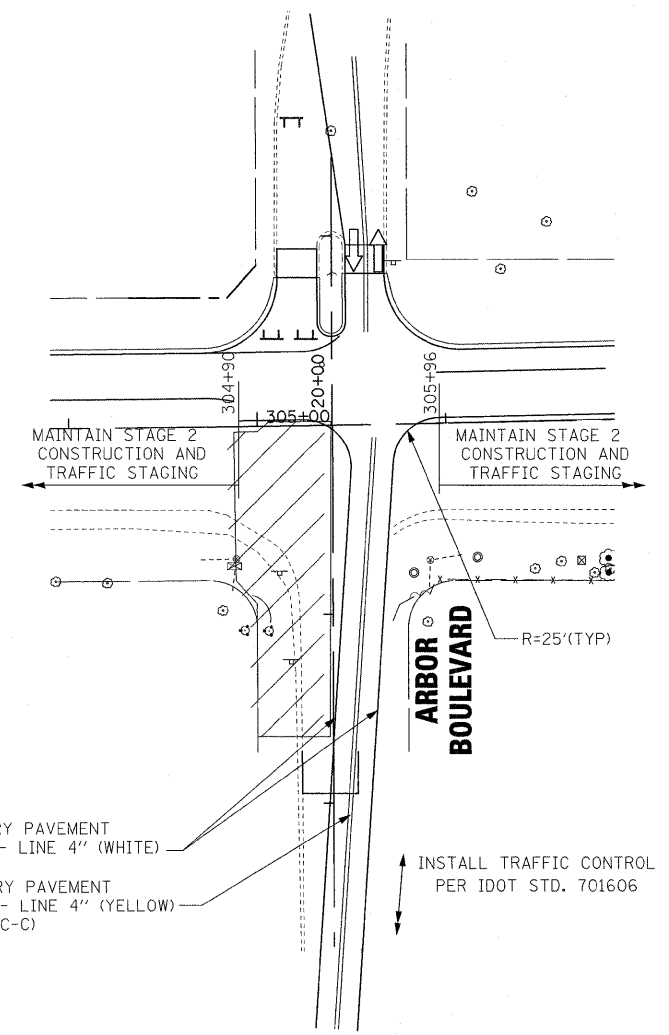
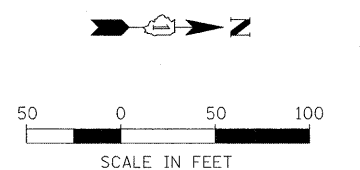


**STAGE 2A - U.S. ROUTE 45 AT
CASEY ROAD**

**STAGE 2A - U.S. ROUTE 45 AT
CASEY ROAD**

MATCH LINE - CASEY ROAD
STA. 9+00

NOTE
ALL TEMPORARY PAVEMENT MARKINGS IN THIS STAGE WILL BE PAID AS "WET REFLECTIVE TEMPORARY TAPE, TYPE III" OF THE SIZE SPECIFIED.



**STAGE 2A - U.S. ROUTE 45 AT
JONES POINT ROAD / ARBOR BLVD.**

STAGE 2A - U.S. ROUTE 45 AT
CASEY ROAD, PRAIRIE SMOKE ROAD, AND
JONES POINT ROAD / ARBOR BLVD.

FILE NAME =	USER NAME = #USER#	DESIGNED - MAP	REVISED -
#FILE#		DRAWN - JRH	REVISED -
	PLOT SCALE = #SCALE#	CHECKED - JW	REVISED -
	PLOT DATE = #DATE#	DATE - 12-12-08	REVISED -

**STATE OF ILLINOIS
DEPARTMENT OF TRANSPORTATION**

MAINTENANCE OF TRAFFIC — STAGE 2A

SCALE: 1" = 50' SHEET NO. 1 OF 1 SHEETS STA. TO STA.

F.A.P. RTE.	SECTION	COUNTY	TOTAL SHEETS	SHEET NO.
344	(46-1S&47)WRS-3	LAKE	176	45
U.S. ROUTE 45 RECONSTRUCTION			CONTRACT NO. 60957	
FED. ROAD DIST. NO.		ILLINOIS FED. AID PROJECT		