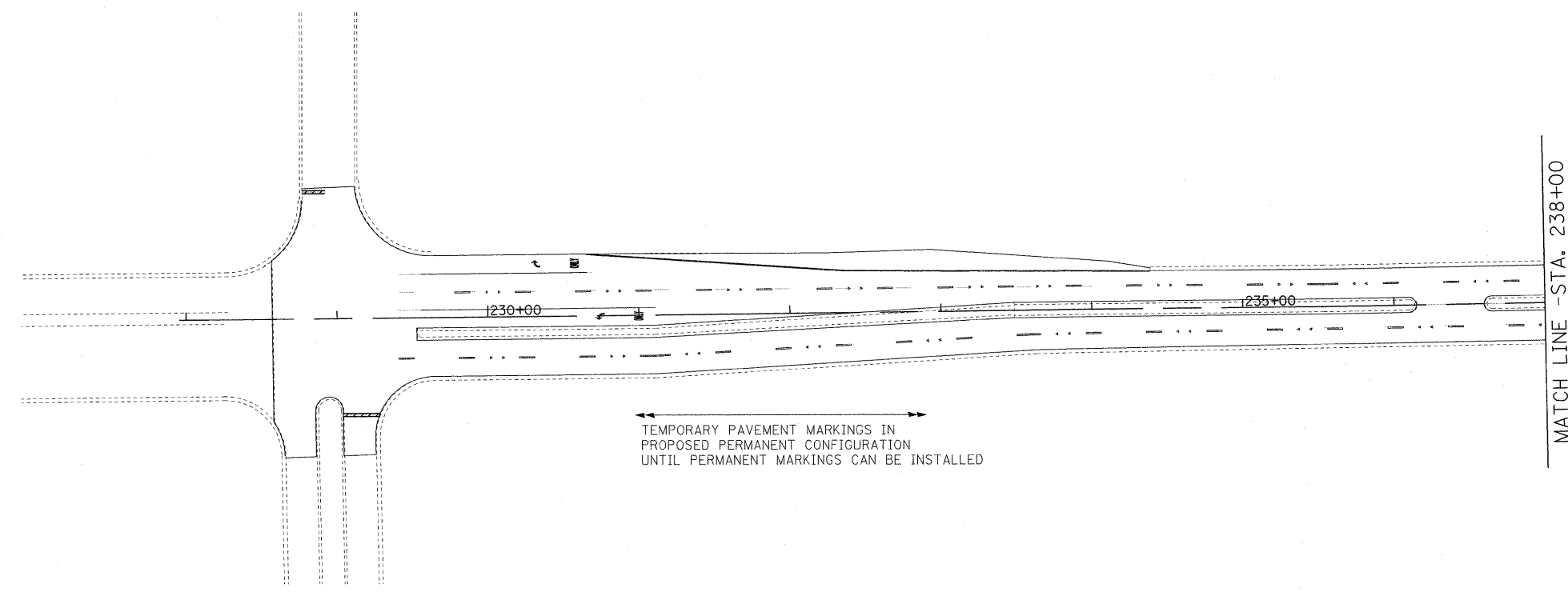
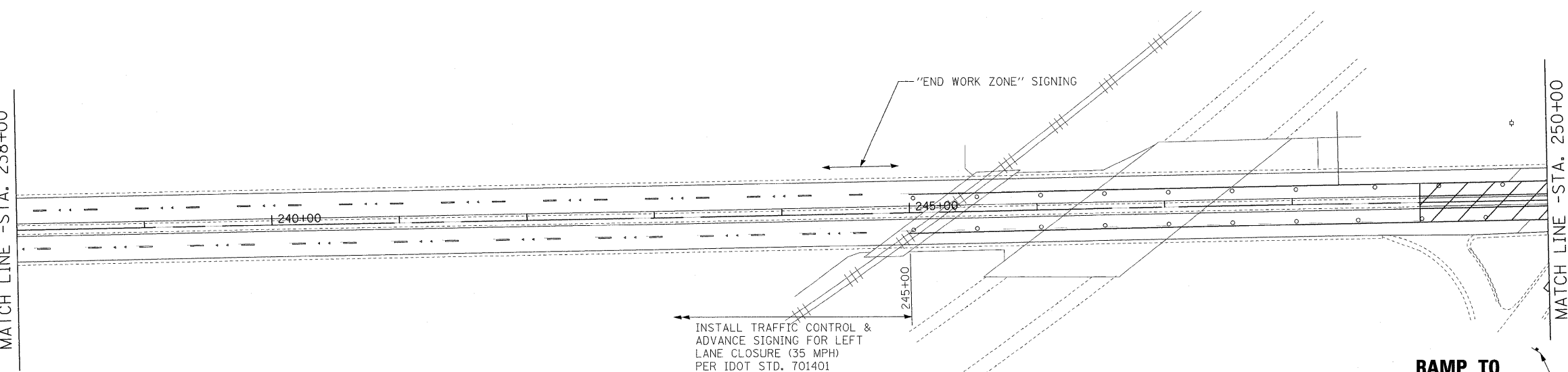


TEMPEL DRIVE



LIBERTYVILLE
SPORTS COMPLEX
ENTRANCE

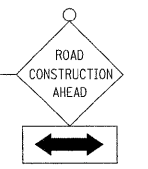
MATCH LINE - STA. 238+00



IL ROUTE 137

RAMP TO
IL ROUTE 137

MATCH LINE - STA. 250+00



FILE NAME = #FILEL#	USER NAME = #USER#	DESIGNED - MAP	REVISED -	STATE OF ILLINOIS DEPARTMENT OF TRANSPORTATION	MAINTENANCE OF TRAFFIC - STAGE 3	F.A.P. RTE. 344	SECTION (46-1S&47)WRS-3	COUNTY LAKE	TOTAL SHEETS 176	SHEET NO. 46
	PLOT SCALE = #SCALE#	DRAWN - JRH	REVISED -			U.S. ROUTE 45 RECONSTRUCTION	CONTRACT NO. 60957			
	PLOT DATE = #DATE#	CHECKED - JW	REVISED -			FED. ROAD DIST. NO.	ILLINOIS FED. AID PROJECT			
		DATE - 12-12-08	REVISED -			SCALE: 1" = 50'	SHEET NO. 1 OF 5 SHEETS STA. TEMPEL DR TO STA. 250+00			