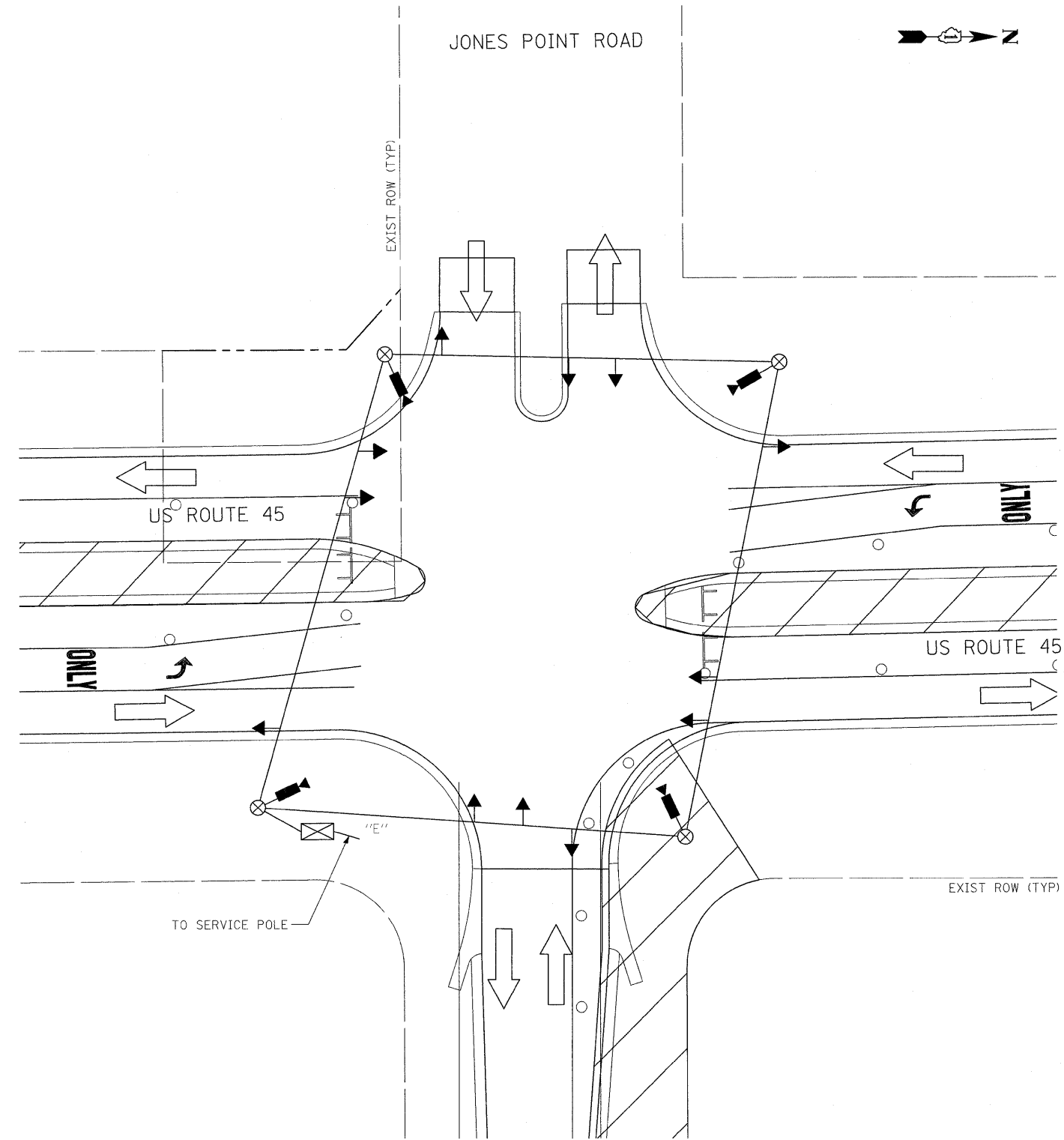


STAGE 2 CONFIGURATION

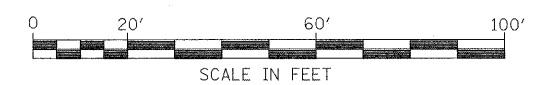


STAGE 3 CONFIGURATION

**TEMPORARY TRAFFIC SIGNAL LEGEND**

- ← TEMPORARY TRAFFIC SIGNAL HEAD SPAN WIRE MOUNTED ORIGINAL LOCATION.
- ↖ TEMPORARY TRAFFIC SIGNAL HEAD SPAN WIRE MOUNTED SECONDARY LOCATION.
- ⊗ TEMPORARY WOOD POLE (CLASS 5 OR BETTER) 45 FEET (13.7m) MINIMUM.
- ☒ TEMPORARY CONTROLLER CABINET
- TEMPORARY SPAN WIRE, TETHER WIRE, AND CABLE
- TEMPORARY SERVICE INSTALLATION
- ⊣ TEMPORARY PEDESTRIAN SIGNAL HEAD, BRACKET MOUNTED.
- ⊣ MICROWAVE VEHICLE SENSOR
- ⊙ PEDESTRIAN PUSHBUTTON DETECTOR
- ⊣ EMERGENCY VEHICLE LIGHT DETECTOR
- ⊣ CONFIRMATION BEACON
- VEHICLE DETECTOR, INDUCTION LOOP
- CT COMMON TRENCH
- UD UNIT DUCT
- GS CONDUIT IN TRENCH OR PUSHED
- ⊣ HANDHOLE
- ⊣ HEAVY DUTY HANDHOLE

**NOTE**  
 THE TEMPORARY TRAFFIC SIGNAL CONTROL EQUIPMENT FOR THIS PROJECT SHALL BE "EAGLE" TO MATCH THE EXISTING ADJACENT SYSTEM.



FILE NAME =	USER NAME = #USER#	DESIGNED - MAP	REVISED -	<b>STATE OF ILLINOIS DEPARTMENT OF TRANSPORTATION</b>	<b>TEMPORARY TRAFFIC SIGNAL - STAGES 2 AND 3</b>	F.A.P. RTE.	SECTION	COUNTY	TOTAL SHEETS	SHEET NO.	
#FILE#		DRAWN - JRH	REVISED -			344	(46-1S&47)WRS-3	LAKE	176	111	
PLOT SCALE = #SCALE#		CHECKED - DEM	REVISED -			U.S. ROUTE 45 RECONSTRUCTION CONTRACT NO. 66957					
PLOT DATE = #DATE#		DATE - 12/12/07	REVISED -			FED. ROAD DIST. NO. ILLINOIS FED. AID PROJECT					
					SCALE: 1"=20'	SHEET NO. 4 OF 5 SHEETS	STA.	TO STA.			