

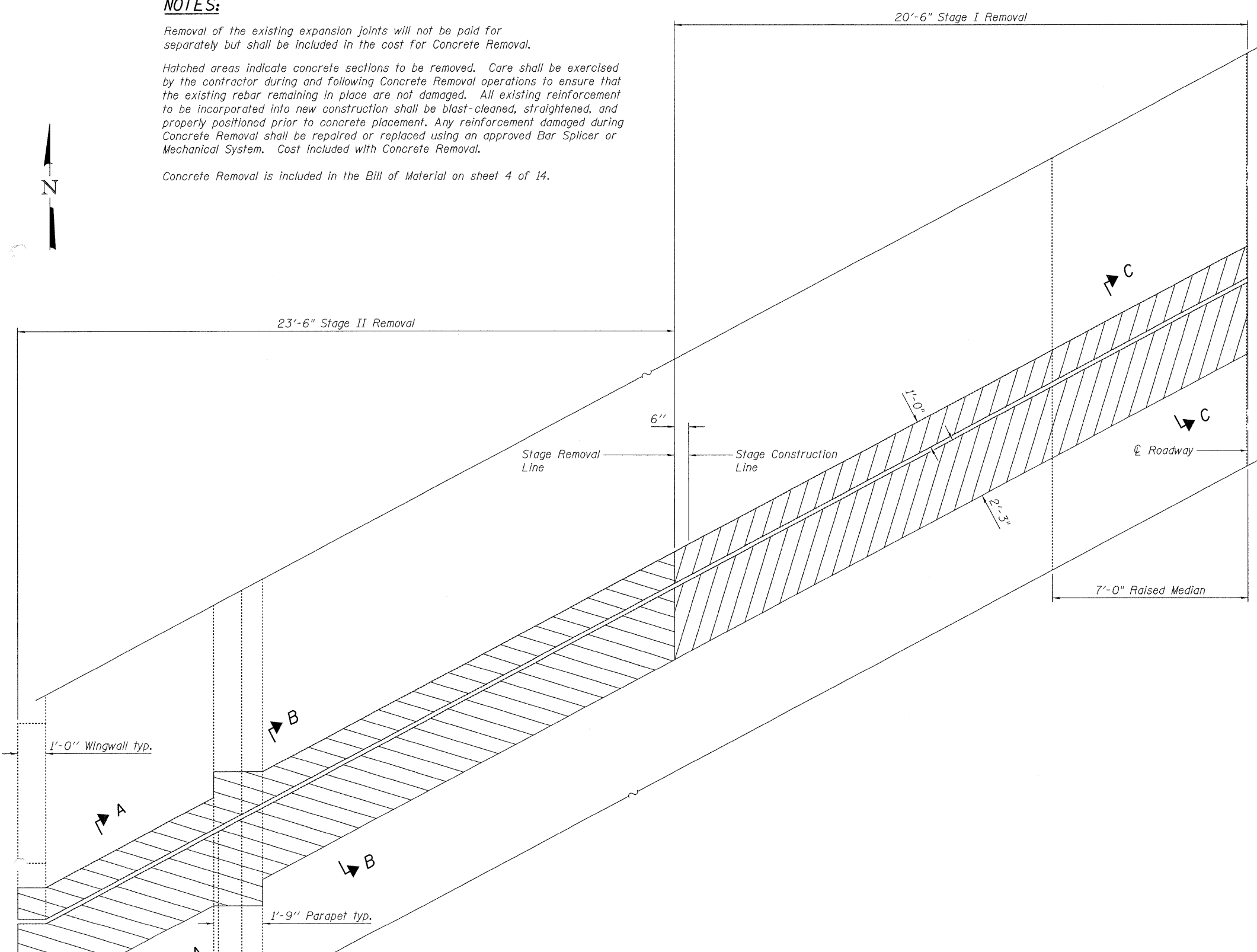
Contract #60D70

**NOTES:**

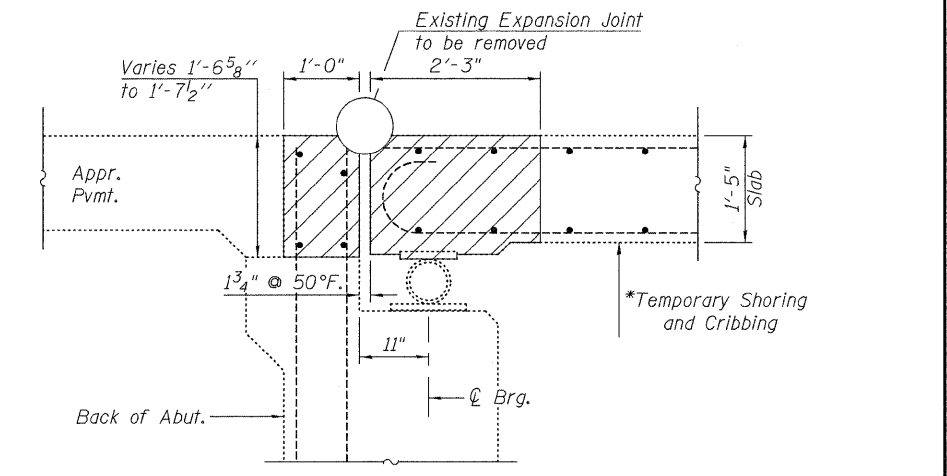
Removal of the existing expansion joints will not be paid for separately but shall be included in the cost for Concrete Removal.

Hatched areas indicate concrete sections to be removed. Care shall be exercised by the contractor during and following Concrete Removal operations to ensure that the existing rebar remaining in place are not damaged. All existing reinforcement to be incorporated into new construction shall be blast-cleaned, straightened, and properly positioned prior to concrete placement. Any reinforcement damaged during Concrete Removal shall be repaired or replaced using an approved Bar Splicer or Mechanical System. Cost included with Concrete Removal.

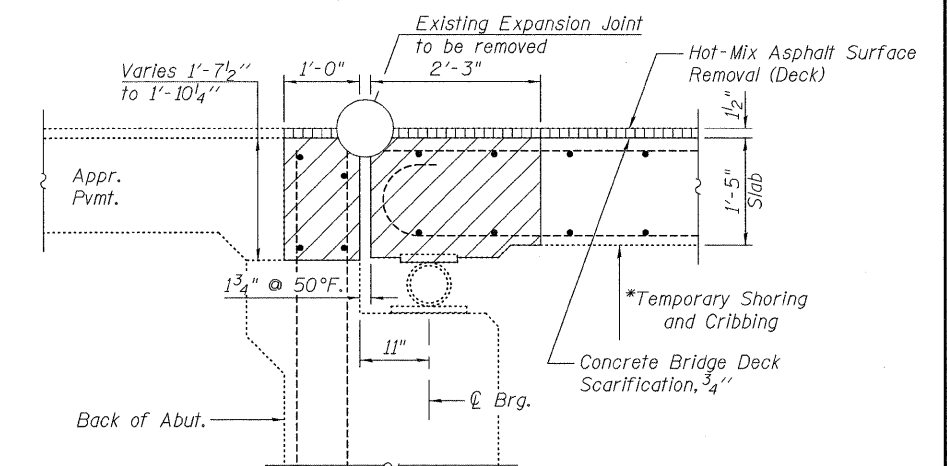
Concrete Removal is included in the Bill of Material on sheet 4 of 14.



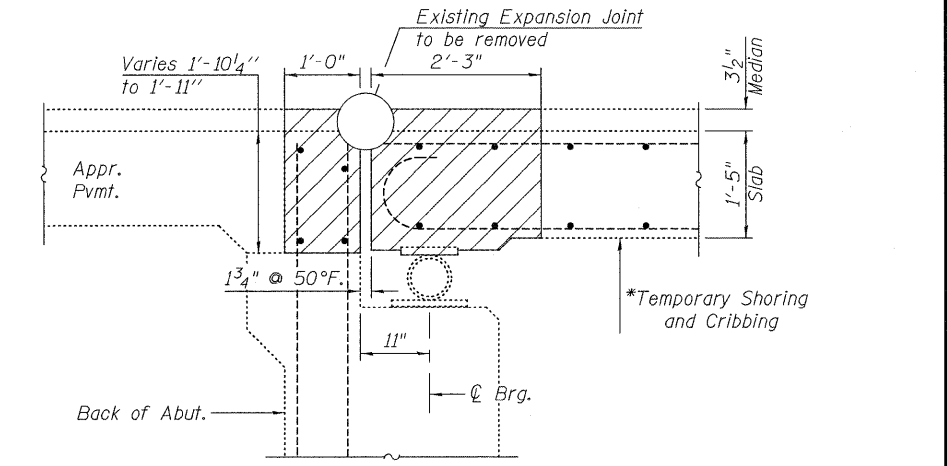
**JOINT REMOVAL HALF PLAN**  
(West half of North Joint shown, others similar)



**SECTION A-A**



**SECTION B-B**



**SECTION C-C**

\* For Temporary Shoring and Cribbing  
See Special Provision and also see sheet  
10 of 14 for Reaction Table and Bill of  
Material.



200 West Front Street  
Wheaton, IL 60187

ILLINOIS DEPARTMENT OF TRANSPORTATION  
EXPANSION JOINT REMOVAL  
AT DECK  
IL 43 OVER STONY CREEK  
FAP RTE 348 SECTION 3128-Z-B-1  
COOK COUNTY  
STATION 179+01.40  
STRUCTURE NO. 016-0322

DATE: 1-30-2009

DRAWN BY LM  
CHECKED BY BLB

2/12/2009 ka11225582\structures\11\_43 over stony creek\final plans\jointremoval.dgn