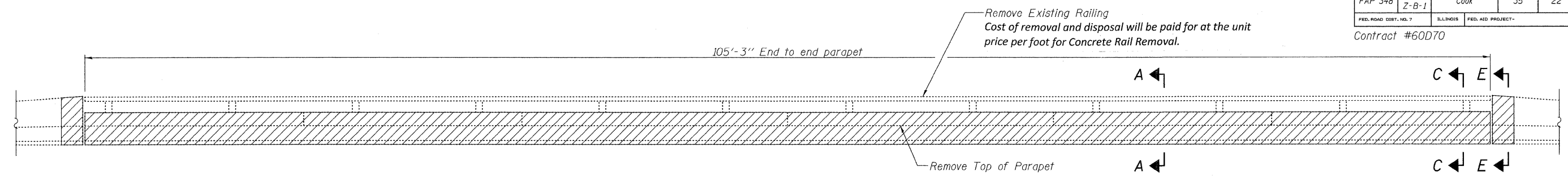
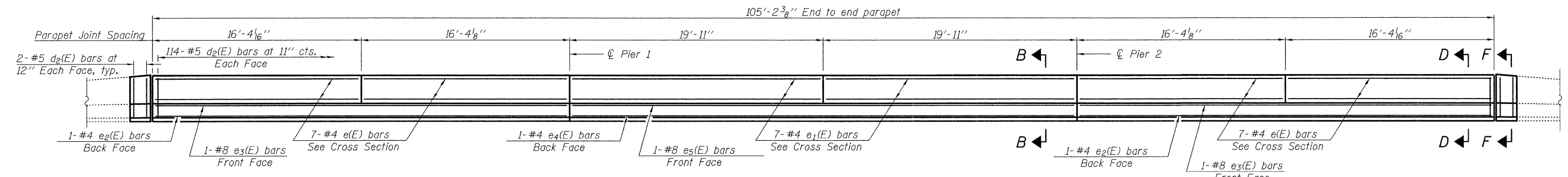


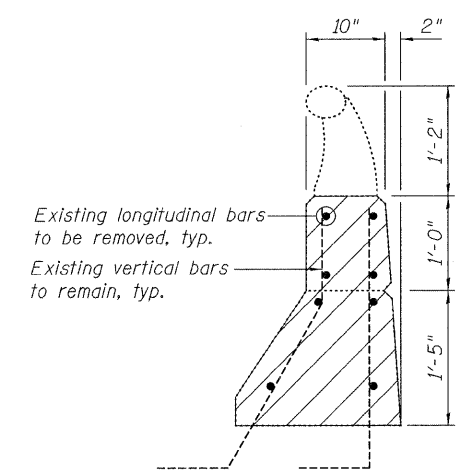
Contract #60D70



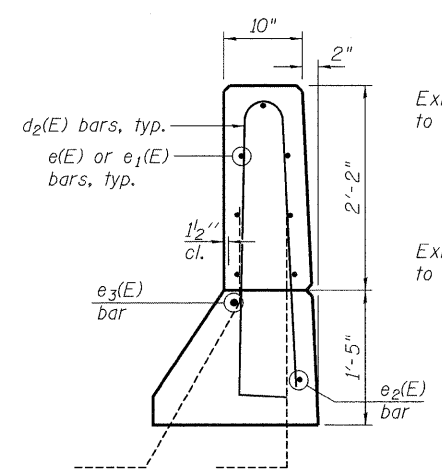
EXISTING PARAPET REMOVAL ELEVATION



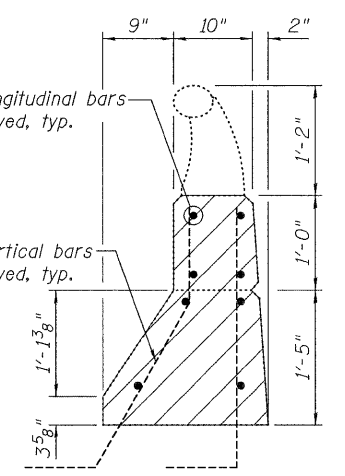
PROPOSED PARAPET ELEVATION



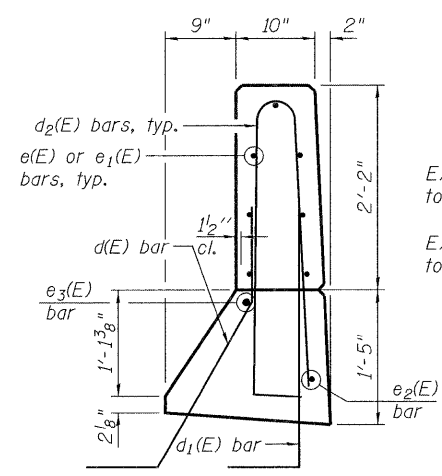
SECTION A-A



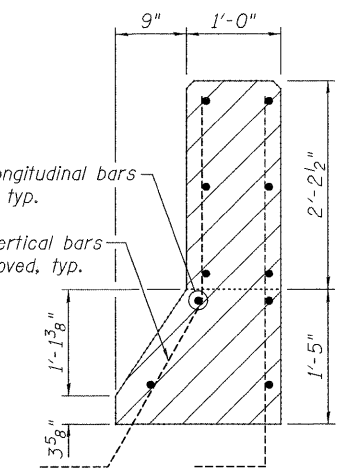
SECTION B-B



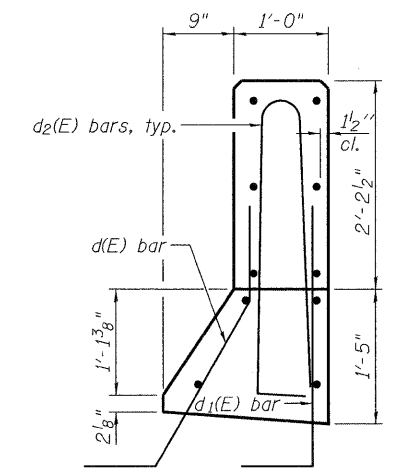
SECTION C-C



SECTION D-D



SECTION E-E



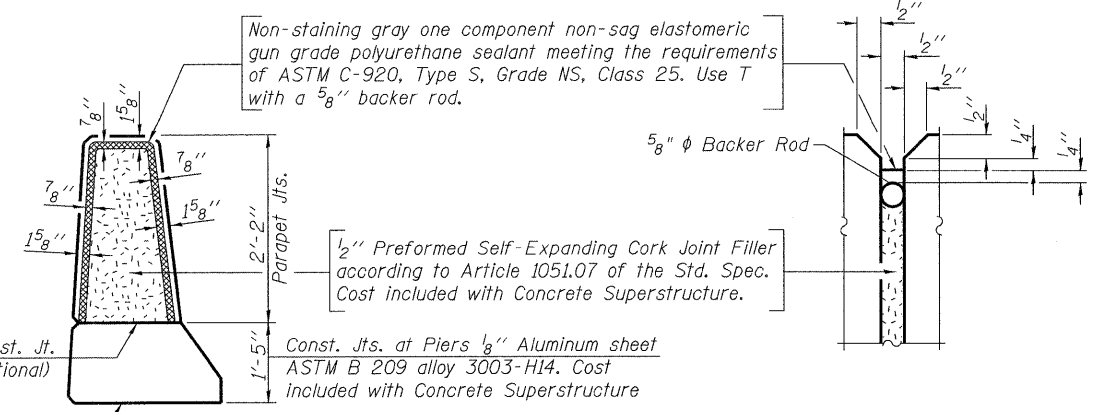
SECTION F-F

placement and quantity of d(E) and d1(E) bars shown on page 5 of 14

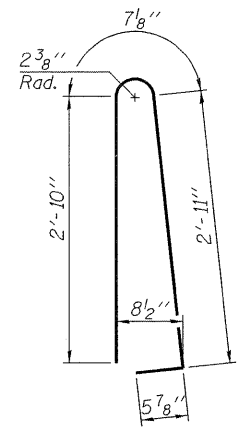
placement and quantity of d(E) and d1(E) bars shown on page 5 of 14

NOTES

Hatched areas indicate concrete sections to be removed. Care shall be exercised by the contractor during and following Concrete Removal operations to ensure that the existing rebar remaining in place are not damaged. All existing reinforcement to be incorporated into new construction shall be blast-cleaned, straightened, and properly positioned prior to concrete placement. Any reinforcement damaged during Concrete Removal shall be repaired or replaced using an approved Bar Splicer or Mechanical System. Cost included with Concrete Removal.



PARAPET JOINT DETAILS



d2(E) Bars

BILL OF MATERIAL

Bar	No.	Size	Length	Shape
d2(E)	236	#5	6'-10"	U
e(E)	56	#4	16'-1"	—
e1(E)	28	#4	19'-8"	—
e2(E)	4	#4	32'-5"	—
e3(E)	4	#8	32'-5"	—
e4(E)	2	#4	39'-7"	—
es(E)	2	#8	39'-7"	—
Bridge Rail Removal		Foot		211
Concrete Removal		Cu. Yd.		22.7
Concrete Superstructure		Cu. Yd.		31.1
Protective Coat		Sq. Yd.		197
Reinforcement Bars, Epoxy Coated		Pound		3350

rjngroup
Excellence through Ownership
200 West Front Street
Wheaton, IL 60187

ILLINOIS DEPARTMENT OF TRANSPORTATION
PARAPET REHABILITATION
IL 43 OVER STONY CREEK
FAP RTE 348 SECTION 3128-Z-B-1
COOK COUNTY
STATION 179+01.40
STRUCTURE NO. 016-0322
DATE: 1-30-2009
DRAWN BY WJV
CHECKED BY BLB